

THE PREVALENCE OF ADHD IN PRIMARY SCHOOL STUDENTS IN TEHRAN

K. KHUSHABI*, M.D., H. POUR-ETEMAD, Ph.D.,† M. MOHAMMADI, M.D.,‡ AND P.
MOHAMMADKHANI, Ph.D.§

From the Dept. of Child Psychiatry, Dept of Psychiatry, University of Welfare and Rehabilitation Sciences, Tehran, I.R. Iran.

ABSTRACT

Background: Attention Deficit Hyperactivity Disorder (ADHD) is characterized by a developmental disorder involving inappropriate poor attention span or age-inappropriate features of hyperactivity and impulsivity and/or both.

Methods: In order to assess the prevalence of children with ADHD in Tehran, a sample of 2667 children including both boys & girls aged between 7-12 years were selected by a 2-stage method sampling among a grid of sectors of 19 different educational areas by stratified random sampling. We tested the rate of ADHD in the considered children based on two questionnaires of Conners Parent and Teacher Rating Scales (CPRS and CTRS) and semi-structured interviews.

Results: According to the recent studies, it is possible to describe the rate of ADHD prevalence based on the CPRS and CTRS questionnaires and semi-structured interview among the primary school children in Tehran (aged between 7-12 years of age) with a range of 3% to 6%.

Conclusion: These mentioned findings are somewhat similar to the announced statistics of the American Psychiatric Association (APA) (2003).

MJIRI, Vol. 20, No.3, 147-150, 2006.

Keywords:

INTRODUCTION

Attention Deficit Hyperactivity Disorder (ADHD) is characterized by a developmental disorder involving inappropriate poor attention span or age-inappropriate features of hyperactivity and impulsivity or both. To meet the diagnostic criteria, the disorder must be diagnosed for at least six months, cause impairment in academic or social functioning and occur before the age of 7yr.^{1,2,3}

According to the fourth Diagnostic and Statistical Manual Textual Revision (DSM-IV- TR) of mental disor-

ders, there are three subtypes of ADHD: Predominantly inattentive type, predominantly hyperactive inattentive-type and combined type.^{1,2}

Some impairments from the symptoms are seen in two or more settings (at school and at home).² Most children with ADHD are between the ages of 6 to 12 yr., therefore, symptoms of the disorder are described mainly for this age group. However, it should be noted that ADHD can be problematic in the preschool age group and continue into adolescence. Also adulthood and boys have a greater incidence than girls, with the ratio being 3 to 1. The disorder is mostly common in the first born boys.^{1,2}

It has been estimated that more than 50% of children with ADHD are prone to experience other psychiatric disorders such as Oppositional Defiant Disorder (ODD), depression and anxiety disorder.^{1,2,4,5}

ADHD is believed to be the most common psychiatric disorder in children, affecting 3% to 5% of the school age population. It is also a condition which has been documented in many parts of the world, such as Germany, Puerto Rico, and Taiwan. A recent result from the Na-

* Assistant Professor of Child Psychiatry, Department of Psychiatry, University of Welfare and Rehabilitation Sciences, Tehran, Iran.

† Assistant Professor, Department of Psychology, Shahid Beheshti University.

‡ Professor, Department of Psychiatry, Tehran University of Medical Sciences

§ Associate Professor, Department of Psychology, University of Welfare and Rehabilitation Sciences.

* **Corresponding Author:** Katayoon Khushabi, Rofeideh hospital, tel: +98-21-22205326

Table I. The prevalence of ADHD in age group 7-12 years in Conner's teachers and parents' questionnaires.

Questionnaire	Age					
	7	8	9	10	11	12
Incidence rate in Conner's questionnaire of teachers (In percent)	4	4	6	4	4	3
Incidence rate in Conner's questionnaire of parents (In percent)	3	4	6	5	5	5

tional Comorbidity Survey Replication Study conducted on about 10,000 people in the U.S.A has already suggested an adult prevalence rate of 4%.^{1,2}

Epidemiological studies revealed prevalence rates

Table II. The prevalence of ADHD (in percent) in different age groups in Conner's parents questionnaires.

Sex	Age					
	7	8	9	10	11	12
Girl	4.5	2.5	5	3.5	4	3.5
Boy	3	4.5	5	4	2.5	4
Total	4	4	6	4	4	3

generally ranging from 4% to 12% in the general population of 6 to 12 years of age.⁶

According to the studies performed in our country and according to a research accomplished with a sample of 501 subjects, the prevalence of inattentive type among primary school children was 17.8%, the prevalence of hyperactivity was 13%, and the prevalence of the combined type was 6.2%.⁷ In a recent research performed on 400 subjects, the prevalence rate of ADHD has been reported as 9%.⁸

MATERIAL AND METHODS

The Conners Parent Scale^{9, 10} (CPRS- 48) with five major elements of conduct problems, leaving problems, psychosomatics, impulsive-hyperactive and anxiety and also Conners Teacher Rating Scale¹¹ (CTRS- 38) with six major elements of hyperactivity, conduct problems, emotional overindulgence, anxious-passive, asocial and day dream-attendance have been used in this research. Factor

Table III. The prevalence of ADHD (in percent) in different age groups in Conner's teachers questionnaires.

Sex	Age					
	7	8	9	10	11	12
Girl	3.5	4	5	4	3.5	2
Boy	3	3	4.5	5	3.5	3
Total	3	4	6	5	5	5

analysis method by using principal component method, factor matrix rotation with the help of equamax method, correlation method and student method have also been used in this research. This research includes two stages: the first stage is considering the prevalence of ADHD with cross-sectional survey and in the second stage the students who may have ADHD, will be semi-structurally interviewed.

This section of the research is a type of descriptive study. For presenting the evidence of concurrence, validity/ reliability correlation coefficient between two CPRS and CTRS questionnaires were assessed.

All students of primary schools in Tehran aged between 7-12 years, from 19 educational areas were our statistical universe, and a 2667 sample of boys and girls were selected for classification by stratified random sampling.

Conduct problem scale can be concluded as below: cutoff 5 from the age of 6 to 8yr., cutoff 5 from the age of 9 to 11 yr. in learning problem scale, cutoff 3 in both from the age of 6 to 8yr. in psychosomatic scale and from the age of 9 to 11yr., in impulsive-hyperactive scale, cutoff 8 from age of 6 to 8yr. and cutoff 7 from the age of 9 to 11yr. in anxiety scale.

RESULTS

In the groups of 7-12 years of age, 8-year-old children with 588 instances and 12-year-old ones with 169 instances were the most and the least number of subjects respectively.

In the study group of 1112 kids, 41% were the first child of their own families and totally 32% were the 3rd child of the family. Families with a single child were allocated about 51.4% of the total sample. Seventy seven percent of their mothers were housewives and 44% of their fathers had private jobs. The mean and standard deviation of the age of their mothers was 34 yr and 40 yr for the fathers. The scores of ADHD in 7 year old boys/girls in CPRS and CTRS were equal. The rates of the scores of ADHD in 8-year old boys/girls were equal, too. The scores of ADHD in 9-year-old boys/girls who have obtained the CPRS were equal. However CTRS showed that boys have higher ADHD scores than girls. There is no difference between the scores of the questionnaires of the boys and girls aged 10. Among all the 11 year old children, there were more boys than girls with ADHD. There is no difference among 12-year- old boys/ girls from the point of view of ADHD.

According to the latest findings of both CPRS and CTRS of primary school children of Tehran aged between 7 to 12 years old, the prevalence of ADHD would be mentioned in a range of 3%- 6%.

The mentioned findings compared to the following ones can be as the study (1999), and the announced statistics of APA (2003), declare that the prevalence of ADHD in children is about 3%- 5%. Although the average rate of ADHD in Brazilian children, along with research findings of Rohde studies (2005) may confirm this idea that its prevalence in boys is about 4% and it would not be confirmed for primary school boys, which its rate is about 19%.¹³ Therefore, as the results show, findings of the present study are consistent with the results of Conners and his colleagues studies; that is, prevalence of ADHD between 8-11 year- old children is much higher in boys than girls.

From another point of view, since ADHD has co morbidity with conduct disorders, oppositional defiant disorder, learning disorder, depressive and anxiety disorders, it will make the clinical features more complicated and even the therapeutic responses will decrease. Therefore, special attention should be paid to diagnosis and treatment. However, the children with ADHD and their families are in great need of special short-term, intermediate and long-term national mental health systematic planning.

ACKNOWLEDGEMENT

This research was supported by National Research Center of Medical Sciences of I.R. of IRAN.

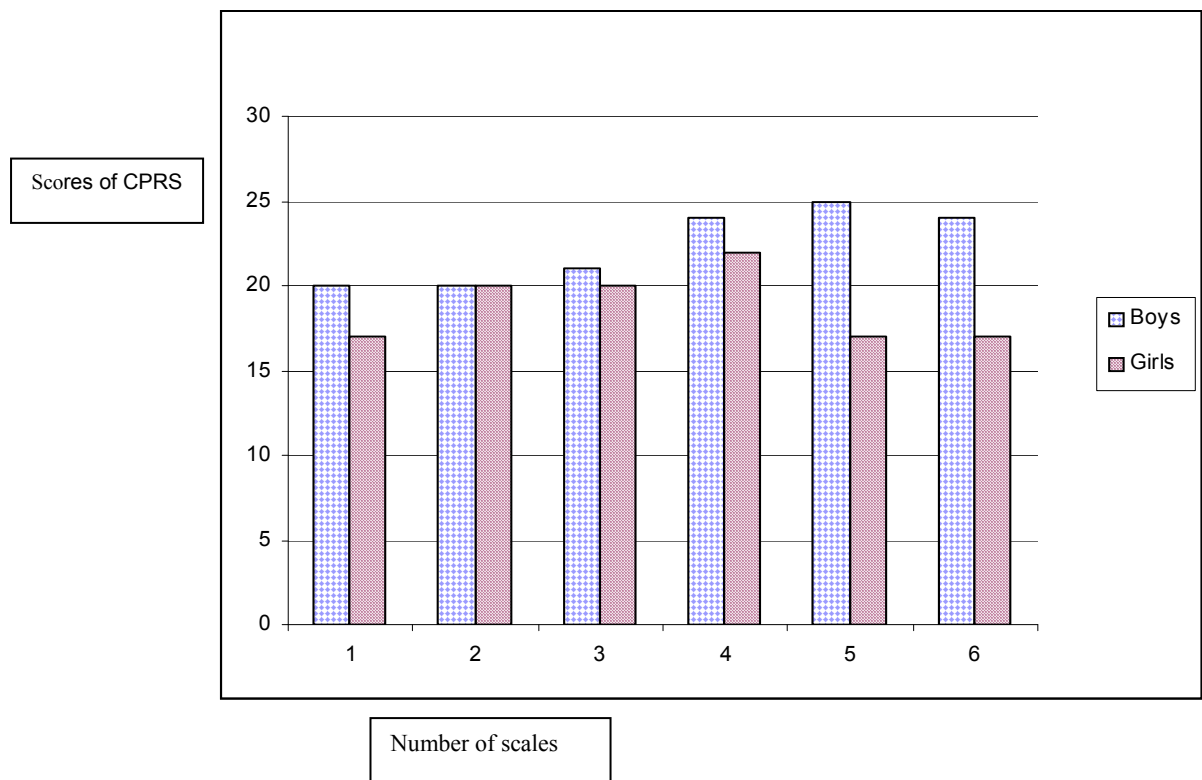


Fig. 1. Bar diagram of function in studied groups in parents' questionnaire with sex / age group separation.

CONCLUSION

Our research has completely clarified that ADHD is the most common psychiatric disorder in children.

As ADHD causes significant impairment in family, academic and social functioning, early diagnosis and early intervention will prevent the consequences of ADHD.

REFERENCES

1. Kaplan H, Sadock B: Synopsis of psychiatry. Third ed., Williams & Wilkins, chap. 43, PP. 1033-1042, 2003.
2. Sadock V, Sadock B: Comprehensive textbook of psychiatry. 8th ed. Williams & Wilkins, chap 39, p. 3183-3204, 2005.

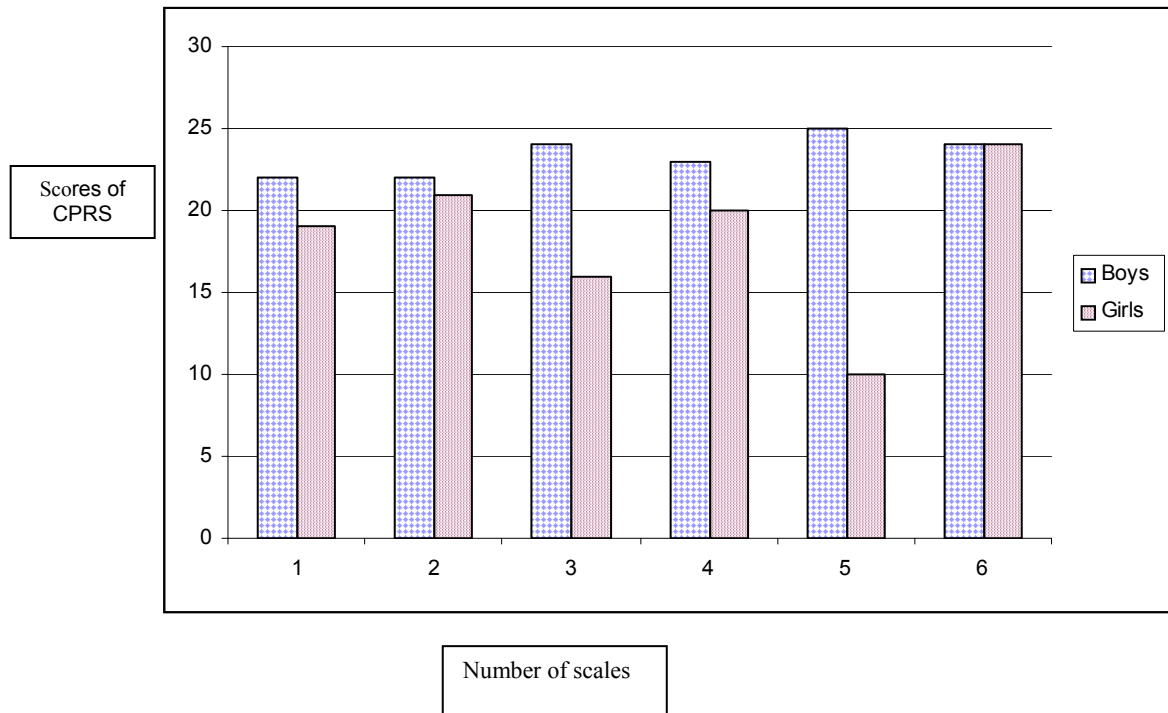


Fig. 2. Bar diagram of function in teachers' questionnaire with sex / age group separation.

3. Green R, Biederman J, Faraone ST: Social impairment in girls with ADHD. JAACAP 40(6); 704-710, 2001(June).
4. New corn J, Halperin J, Jensen P: Symptoms profiles in children with ADHD: effect of co morbidity and gender. JAACAP 40(2): 137- 146, 2001(Feb).
5. Swensen A, Birnbaum H, Senick K: Attention deficit hyperactivity disorder: increased costs for patients and their families. JAACAP 42(12): 1415-1423, 2003 (Dec).
6. Brown R, Freeman W, Perrin J PE: Prevalence and assessment of ADHD in primary care setting. Pediatrics 3:107, 2001(March).
7. Yousefi F: The prevalence of ADHD in primary school students in Sannandaj. Master of Science dissertation in clinical psychology. Iran Medical Sciences University, 1998.
8. Tavakolizadeh J: The prevalence of ADHD in primary school students of Gonabad. Master of Science dissertation in clinical psychology. Iran Medical University, 1996.
9. Conners CK: Conners Parent Rating Scale, Technical manual. Toronto: Multi Health Systems; 1989.
10. Collett B, Ohan J: Ten year review of rating scales. V: scales assessing ADHD. JAACAP 42 (9); 1015-1037, 2003(Sep).
11. Conners CK: Conners Teacher Rating Scale, Technical manual. Toronto Multi Health Systems. 1990.
12. Ford T, Goodmon R, Meltzer H: The British child & adolescent mental health survey. JAACAP 42 (10): 1203-1211, 2003(Oct).
13. Rohde LA, Szobot C, Polonczy K: ADHD in a diverse culture: do research and clinical findings support the notion of a construct for the disorder? Biol Psychiatry 57 (11): 1436-41, 2005.