



Association Between Hypoalbuminemia, Degree of Proteinuria, and Lupus Nephritis Class: A Single-Center Cross-Sectional Biopsy Study

Ngoc Nguyen Thi¹, Dien Tran Minh¹, Huong Nguyen Thu¹, Phuong Luong Thi², Nam Thai Thien¹, Diep Pho Hong¹, Kien Nguyen Trung^{3,4}, Tien Tran Viet^{3,4}, Quyet Do³ and Thang Le Viet^{3,4,*}

¹Vietnam National Hospital of Pediatrics, Ha Noi, Vietnam

²Ha Noi Medical University, Ha Noi, Vietnam

³Vietnam Military Medical University, Ha Noi, Vietnam

⁴Military Hospital 103, Ha Noi, Vietnam

*Corresponding author: Military Hospital 103, Vietnam Military Medical University, Ha Noi, Vietnam Email: lethangviet@yahoo.co.uk

Received 2021 February 25; Accepted 2021 March 02.

Abstract

Background: The current study intended to determine whether serum albumin level and urine protein/creatinine rate (uPCR) are appropriate predictors of severe lupus nephritis in childhood-onset SLE.

Objectives: Following a cross-sectional single-center design, 85 LN children referred to the National Children Hospital, Ha Noi, Viet Nam, from 6/2019 to 6/2020 were recruited. Renal biopsy was performed for all participants.

Methods: Following a cross-sectional single-center design, 85 LN children referred to the National Children Hospital, Ha Noi, Viet Nam, from 6/2019 to 6/2020 were recruited. Renal biopsy was performed for all participants.

Results: The mean SLEDAI score of all patients was 14.69. The proportion of patients with high and very high SLEDAI was 61.2 and 17.6%, respectively. The mean concentration of serum albumin was 28.55 g/L, and the proportion of decreased albumin concentration was 55.3%. The median uPCR was 446.6 mg/mmol in which 76.5% of values were ≥ 200 mg/mmol. Pathological morphology of LN class from I to VI was observed in 0%, 17.6%, 37.6%, 37.6%, 7.1%, and 0%, respectively. Serum albumin level and uPCR presented the predictive value for severe and active LN (class IV and V); (AUC: 0.725 $P < 0.001$ for both).

Conclusions: Serum albumin and uPCR were appropriate predictors for severe and active LN in Vietnamese children.

Keywords: SLE, Pediatric Lupus Nephritis, Serum Albumin, Urine Protein/Creatinine Rate, Pathological Morphology

1. Background

Systemic lupus erythematosus (SLE) is a multisystemic disease with diverse pathogenesis and clinical presentations with considerable comorbidities and significant drug side effects (1-3). Understanding the root cause of SLE is still incomplete. Evidence suggests that abnormalities in the genetic, hormonal, immune system and environmental factors are related to the pathogenesis of SLE (4-6). Childhood-onset SLE (cSLE) is an SLE onset before the age of 18, which is associated with more serious multi-organ dysfunction compared to that of adults (6). The common hematological manifestations of cSLE are hemolytic anemia, thrombocytopenia, leukopenia, and lymphopenia (7).

SLE is a chronic inflammatory disease that affects the kidneys in about 50% of adult patients and about 80% of children (8-10). Lupus nephritis is one of the most common manifestations of SLE patients. It often leads to end-stage kidney disease (ESRD) for both adults and children (8). In

patients with cSLE, not only clinical events are often more severe, but also multi-organ dysfunction is more common than SLE in adults (11-14). There is no publication concerning the demographic, clinical, and pathological features of pediatric LN and their correlations in Viet Nam. Therefore, the present study intended to evaluate some clinical and laboratory manifestations of Vietnamese pediatric patients with biopsy-proven LN class according to the International Society of Nephrology and the Renal Pathology Society (ISN/RPS) 2003 classification (revised in 2018), renal pathological activity, and chronicity index in children with LN.

2. Objectives

The current study intended to determine whether serum albumin level and urine protein/creatinine rate (uPCR) are appropriate predictors of severe lupus nephritis in childhood-onset SLE.

3. Methods

3.1. Study Design

The current cross-sectional, single-center-based study was performed at the Nephrology and Dialysis Department in National Children Hospital, Ha Noi, Viet Nam, from 6/2019 to 6/2020. A total of 85 children younger than 18 with presented clinical features of LN were recruited. SLE was diagnosed using the Systemic Lupus Erythematosus International Collaborating Clinics (SLICC) criteria for SLE classification (15). We defined LN as the 24-hour urinary protein ≥ 500 mg (or uPCR ≥ 0.5 mg/mmol) or the appearance of red blood cell casts in urine (> 5 RBC/HPF by manual analysis of the urine sediment) (16). Participants with other comorbidities, history of kidney transplantation, those receiving hemodialysis, primary neoplastic conditions, and inconclusive results were excluded.

3.2. Clinical and Laboratory Dataset

For each participant, the following laboratory data were collected: full blood count, immuno-biological tests (blood glucose, serum albumin, serum protein, serum C-reactive protein, serum double-stranded DNA (dsDNA), and serum C3 and C4 levels. Clinical parameters (age, sex, skin lesions, rheumatism, neurological lesion, and heart lesion) were also documented for each subject. The systemic lupus erythematosus disease activity index (SLEDAI) was calculated for all patients to determine SLE activity levels (15).

Parameters of kidney lesions were collected for each of the patients as: edema, hypertension, urine analysis, urine protein/creatinine rate, estimated glomerular filtration rate (eGFR). Hypertension is defined as blood pressure higher than the 95th percentile value of healthy people of the same age and sex (17). The eGFR was calculated based on the Schwartz formula (18). An eGFR < 60 ml/min per 1.73 m² was considered as ESRD. We defined nephrotic syndrome as proteinuria > 50 mg/kg in 24h urine and serum albumin < 30 g/L. The LN patients with proteinuria < 50 mg/kg in 24h urine were classified as nephritis syndrome.

All 85 patients underwent renal biopsy. The indications of kidney biopsy were proteinuria > 500 mg/24h, active urine sediment (≥ 5 RBC or WBC/HPF, mostly dysmorphic without evidence of infection), or rising serum creatinine (19, 20). Renal biopsies were done by a Trucut semi-automated renal biopsy gun. Hematoxylin and Eosin (HE), periodic acid Schiff (PAS), silver methamine, Masson's Trichrome (MT) stains were used for light microscopy. Specimens for immunofluorescence microscopy were received in Michelle's medium and stained using fluorescein isothiocyanate (FITC) conjugated polyclonal rabbit antisera against human IgG, IgM, IgA, C3c, C1q, kappa,

and lambda. Control slides were also examined simultaneously. The trained pathologists at our hospital examined all renal biopsy specimens. Histopathology classification of lupus nephritis was performed using six classes (i.e., I to VI) as the criteria of the International Society of Nephrology and the renal pathology society (ISN/RPS) in 2003 revised in 2018 (16).

3.3. Statistical Analyses

We represented continuous data by the mean and standard deviation (with normal distribution data) or median and interquartile range (with non-normal distribution). In addition, categorical data using frequency and percentage. Receiver operating characteristic (ROC) curves were analyzed to predict severe active LN. Data analysis was administered using SPSS version 20.0 (Chicago, IL, USA). Statistical significance was considered when P-value < 0.05 .

4. Results

As shown in Table 1, SLE symptoms presented in patients with lupus nephritis were not considerable. The highest rate was skin lesion (57.6%), followed by rheumatism (29.4%) and the neurological lesion (10.6%). The proportion of patients with a decrease in WBC was 17.6%, while 75.3% of patients had anemia. The rate of patients with decreased serum albumin was 55.3%, increased CRP was 25%, increased Anti-dsDNA was 93.2%, decreased C3 was 90.6%, decreased C4 was 97.6%, and positive antinuclear antibodies accounted for 81.8%. Most patients had SLEDAI scores in moderate to very high activity.

As shown in Table 2, those with clear LN with edema, hypertension, and oliguria, accounting for 34.1% to 63.5% of all participants. Up to 76.5% of patients had an increase in uPCR ≥ 200 mg/mmol. With the clinical syndromes of lupus nephritis, nephrotic syndrome accounted for 51.8% of patients, 7.1% of participants had kidney failure.

According to pathological morphology, most patients had an LN class of III and IV (37.6% for each class), and only 7.1% had an LN class of V and 17.6% class II. No patient was from a class I and VI (Table 3).

As shown in Table 4, the serum albumin decreased gradually, while the rate of nephrotic syndrome, uPCR, and SLEDAI score increased gradually from LN class II to V. The WBC, hemoglobin level, Anti-dsDNA, as well as eGFR, changed irregularly, and there was a statistically significant difference between the study groups ($P < 0.05$).

Based on the Receiver operating characteristics (ROC) curve model (Figure 1), serum albumin, uPCR were appropriate predictors for severe, active LN (classes IV and V) (Serum albumin: AUC = 0.725, $P < 0.001$, Cut-off value: 28.65

Table 1. Clinical Characteristics and Laboratory Parameters of Pediatric Lupus Nephritis (N = 85)^a

Clinical Characteristics and Laboratory Parameters	Values
Ages, y	11.28 ± 2.21
Gender	
Female	73 (85.9)
Male	12 (14.1)
BMI	
Mean	17.71 ± 3.86
Underweight	15 (17.6)
Normal	56 (65.9)
Overweight and Obesity	14 (16.5)
Clinical features	
Skin lesion	49 (57.6)
Mouth erosion	15 (17.6)
Rheumatism	25 (29.4)
Neurological lesion	9 (10.6)
Heart lesion	2 (2.4)
Full blood count	
RBC, T/L	3.71 ± 0.99
WBC, g/L: Median	6.62 (4.59 - 10.01)
< 4.0	15 (17.6)
Hemoglobin, g/L: mean	99.94 ± 22.82
Anemia	64 (75.3)
Platelet, g/L	219 (149 - 320)
Neutrophil/lymphocyte rate	2.15 (1.45 - 3.25)
Immuno-biological data	
Protein, g/L: Median	61.7 (51.95 - 71.05)
< 56	28 (32.9)
Albumin, g/L: Mean	28.55 ± 6.9
< 30	47 (55.3)
CRP, mg/L: Median	1.43 (0.32 - 5.54)
> 5	15 (25)
Anti-DsDNA, IU/L: Median	378 (110.2 - 1316)
< 30	5 (6.8)
≥ 30	68 (93.2)
C3, g/L: Median	0.33 (0.25 - 0.54)
< 0.75	77 (90.6)
≥ 0.75	8 (9.4)
C4, g/L: Median	0.035 (0.01 - 0.079)
< 0.2	83 (97.6)
≥ 0.2	2 (2.4)
Antinuclear antibodies (+)	63 (81.8)
SLEDAI score	
Mean	14.69 ± 4.45
Mild activity	0 (0)
Moderate activity	18 (21.2)
High activity	52 (61.2)
Very high activity	15 (17.6)

Abbreviations: Anti-dsDNA, anti-double-stranded deoxyribonucleic acid; BMI, body mass index; CRP, C reactive protein; C3, complement component 3; C4, Complement component 4; RBC, red blood cell; SLEDAI, the systemic lupus erythematosus disease activity index; WBC, white blood cell.

^aValues are expressed as mean ± SD, or median (%), No. (%).

g/L, Se = 68.4%, Sp = 70.2%. uPCR: AUC = 0.725, P < 0.001, Cut-off value: 558.56 mg/mmol, Se = 68.4%, Sp = 85.1%.

5. Discussion

Lupus nephritis (LN) is a common manifestation among SLE patients, with a prevalence of 60% in adults and

Table 2. Some Characteristics of the Renal Lesion in Lupus Nephritis (N = 85)^a

Some Characteristics of Lupus Nephritis	Values
Edema	54 (63.5)
Hypertension	29 (34.1)
Oliguria	62 (61.2)
Urine analysis	
Hematuria (+)	69 (81.2)
Proteinuria (+)	85 (100.0)
Leukocyte (+)	38 (44.7)
uPCR, mg/mmol	
Median	446.6 (241.89 - 799.02)
< 200	20 (23.5)
≥ 200	65 (76.5)
Clinical syndromes	
Nephritic syndrome	35 (41.1)
Nephrotic syndrome	44 (51.8)
Renal failure	6 (7.1)
eGFR, ml/min/1.73 m²	
Mean	106.49 ± 34.72
< 60	6 (7.1)

Abbreviations: eGFR, estimated glomerular filtration rate; UPCR, urine protein/creatinine rate.

^aValues are expressed as mean ± SD, or median (%), No. (%).

Table 3. Pathological Morphology of Pediatric Lupus Nephritis (N = 85)

Classification	No. (%)
Class I: Minimal mesangial lupus nephritis	0 (0)
Class II: Mesangial proliferative lupus nephritis	15 (17.6)
Class III: Focal lupus nephritis	32 (37.6)
Class IV: Diffuse Lupus Nephritis	32 (37.6)
Class V: Membranous lupus nephritis	6 (7.1)
Class VI: Advanced sclerotic lupus nephritis	0 (0)

80% in children. Up to 30% of patients progress to end-stage renal disease (21). In our study, LN's clinical and laboratory characteristics are consistent with other studies conducted in various countries (22, 23). In addition, in the present study, the female-to-male ratio was 6.08/1, with diverse clinical manifestations of SLE. Patient with rheumatism and skin lesion accounted for the highest proportion (57.6% and 29.4%, respectively), while the neurological lesion rate accounted for 10.6%. The proportion of anemia is 75.3%, and the average SLEDAI score is up to 14.69 point. Relevant immunological markers were encountered in the majority of cases, with 81.8% positive for antinuclear antibodies, 93.2% increase in Anti-Ds-DNA ≥ 30 UI/L, 90.6% de-

Table 4. Relationship Between Pathological Morphology and Clinical and Laboratory Characteristics of Pediatric Lupus Nephritis (N = 85)

Characteristics	Class II (N = 15)	Class III (N = 32)	Class IV (N = 32)	Class V (N = 6)	P
Ages, y	12.27 ± 1.33	10.75 ± 2.15	11.44 ± 2.24	10.83 ± 3.54	0.157
Gender					
Male	14 (93.3)	26 (81.3)	28 (87.5)	5 (83.3)	0.716
Female	1 (6.7)	6 (18.8)	4 (12.5)	1 (16.7)	
BMI	17.18 ± 4.58	17.24 ± 3.34	17.91 ± 3.35	20.5 ± 6.45	0.269
FBC					
WBC, g/L	6.73 (4.73 - 12.13)	5.7 (3.56 - 9.33)	5.96 (4.62 - 8.75)	14.02 (8.39 - 17.35)	0.043
Hemoglobin, g/L	109.13 ± 27.73	100.25 ± 18.99	92.12 ± 19.3	117 ± 32.49	0.02
Platelet, g/L	235 (149 - 380)	189.5 (132.75 - 307)	223 (155 - 335.75)	293 (195.75 - 301.3)	0.612
Immuno- Biological data					
Albumin, g/L	31.31 ± 7.6	30.71 ± 6.21	26.42 ± 6.19	21.53 ± 4.57	0.001
CRP, mg/L	2.41 (0.33 - 3.17)	0.94 (0.32 - 7.96)	1.24 (0.34 - 4.09)	6.39 (0.8 - 16.25)	0.839
Anti-DsDNA, IU/L	163 (42.9 - 381.42)	1200 (225.95 - 2170)	491.15 (212.62 - 1507.75)	96.85 (67.85 - 449.07)	0.003
C3, g/L	0.45 (0.29 - 0.72)	0.33 (0.21 - 0.52)	0.3 (0.24 - 0.42)	0.54 (0.44 - 0.7)	0.105
C4, g/L	0.02 (0.01 - 0.08)	0.03 (0.02 - 0.08)	0.04 (0.01 - 0.06)	0.05 (0.01 - 0.08)	0.751
Edema	7 (46.7)	15 (46.9)	18 (56.3)	4 (66.7)	0.74
Hypertension	3 (20)	7 (21.9)	16 (50)	3 (50)	0.052
Nephrotic syndrome	4 (26.7)	12 (37.5)	22 (68.8)	6 (100)	0.001
uPCR, mg/mmol	296.22 (90 - 446.6)	339.39 (121.6 - 537.6)	641.28 (389.8 - 993.3)	1432.45 (1028.7-3290.9)	< 0.001
eGFR, mL/min/1.73 m²	121.83 ± 28.6	114.25 ± 27.5	87.76 ± 33.52	126.58 ± 49.85	0.001
SLEDAI score	11.93 ± 3.88	14.97 ± 4.82	15.28 ± 3.69	17 ± 5.47	0.042

Abbreviations: Anti-dsDNA, anti-double-stranded deoxyribonucleic acid; BMI, body mass index; CRP, C reactive protein; C3, complement component 3; C4, complement component 4; eGFR, estimated glomerular filtration rate; FBC, full blood count; uPCR, urine protein/creatinine rate; SLEDAI, the systemic lupus erythematosus disease activity index; WBC, white blood cell.

crease in C3 < 0.75 g/L, and 97.6% decrease in C4 < 0.2 g/L. Local deposition of immune complexes, a consequence of classical activation of the complement, leads to decreased complement system protein levels (14, 24, 25). Many studies reported that decreased C3 and C4 concentrations in plasma are related to the disease's active state (14, 26). According to the findings of the present study, patients with LN have severe clinical manifestations that demonstrate the mechanism of multiple organ damage of active SLE. Research on the pathogenesis of SLE showed an interaction between genetic and environmental factors, thereby impairing immune tolerance and initiating chronic autoimmune disease (27, 28). Many studies have shown that SLE clinical manifestations in children are often more severe and more susceptible to multiple organ damage than SLE in adults (11, 12, 14, 24).

Carrying out a study on 85 children with LN, we found that kidney lesions' clinical and subclinical symptoms

were evident with 63.5% edema, 61.2% oliguria, and 34.1% hypertension. Urine analysis showed 81.2% positive hematuria and 100% positive proteinuria. Several studies indicated that hematuria and proteinuria are the most common kidney damage abnormalities (67 to 100% of SLE children) (11, 29). Various studies reported that hypertension accounts for 30 to 50% (11, 22). In our study, the ratio of patients with nephrotic syndrome was 51.8%, similar to Batinic et al. (30), but renal failure patients were 7.1%, which is lower than the rate reported by Sevinc et al. (31). In patients with LN, the glomerulus is the most severely damaged structure (14). Changes in membrane permeability are often related to proteinuria, local inflammation, glomerular hematuria, and decreased glomerular filtration (14). Regarding histopathological results, in the present study, the proportion of patients with class III and IV LN was 75.2%, which is in line with the results of some other studies (32, 33). In LN patients, the production of sys-

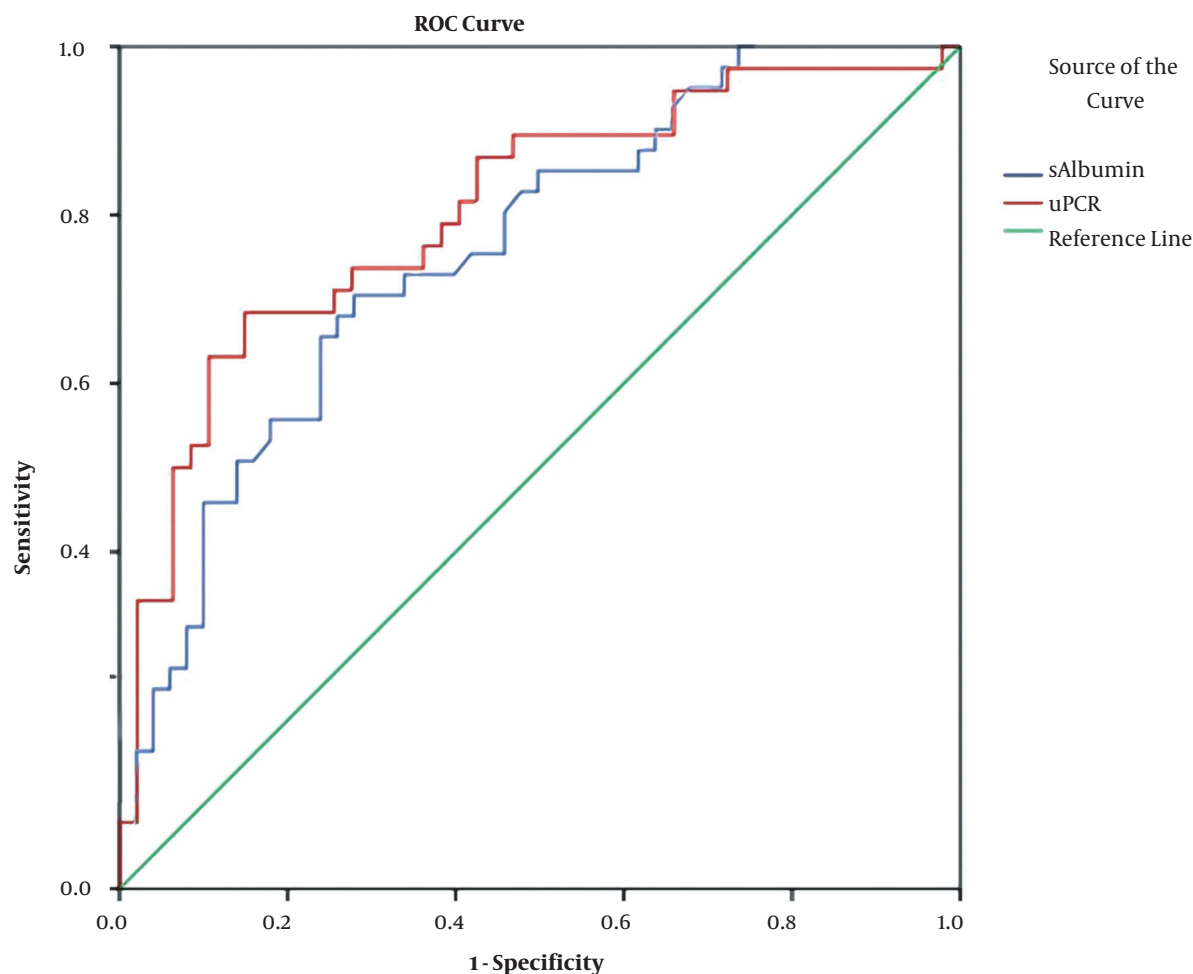


Figure 1. Receiver operating characteristics (ROC) curves for prediction of severe active LN (class IV and V).

temic autoantibodies and complement disturbances are common. The immune complex deposited in glomeruli results in podocyte, mesangial cell, endothelial cell injury. When comparing the clinical and subclinical characteristics of LN classes, we found a gradual decline in the serum albumin concentration, the proportion of patients with nephrotic syndrome together with the median uPCR and SLEDAI score gradually increased from LN class II to V with $P < 0.05$ (Table 4). Our results are consistent with some of the previously conducted studies and the pathogenetic mechanism of the kidney damage of LN (9, 12, 16, 22, 23).

A kidney biopsy is necessary to monitor the progression of LN. However, first, the patients must be hospitalized, and if the biopsy is available, techniques to diagnose pathological morphology should be provided im-

mediately. Besides, those with severe diseases can not always undergo renal biopsies. An important question is that whether it is possible to use clinical manifestations or sub-clinical tests to preliminarily diagnose the class of LN to provide appropriate treatment immediately after hospitalization? We hypothesized that a decrease in serum albumin and an increase in uPCR could predict LN classes of IV and V. The results showed that both serum albumin and uPCR are valid for predicting LN classes of IV and V, in which uPCR has a better value with $AUC = 0.725$, $P < 0.001$, Cut-off value: 558.56 mg/mmol, $Se = 68.4\%$, $Sp = 85.1\%$ (Figure 1). Although predictable, clinical practice shows that it is complicated to treat hypertension, massive proteinuria, and impaired function. LN classes of IV and V, and even class III must be treated even when the patient cannot un-

dergo a renal biopsy (8, 34, 35).

5.1. Conclusions

Serum albumin and uPCR were good predictors for severe, active LN.

Footnotes

Authors' Contribution: Conception and design: Ngoc Nguyen Thi, Dien Tran Minh, and Thang Le Viet. Acquisition of data: Huong Nguyen Thu, Nam Thai Thien, and Phuong Luong Thi. Analysis and interpretation of data: Diep Pho Hong, and Kien Nguyen Trung. Drafting the article and revising it: Ngoc Nguyen Thi, Dien Tran Minh. Final approval: Tien Tran Viet, Quyet Do, and Thang Le Viet.

Conflict of Interests: There were no authors' financial ties to products in the study or potential/perceived conflicts of interest available.

Ethical Approval: This study was approved by the Ethical Committee of National Children Hospital, Ha Noi, Viet Nam (no.: 1228/Q/BVNTW). All human research procedures followed the committee's ethical standards responsible for human experimentation (institutional and national) and the Helsinki Declaration of 1975, as revised in 2008.

Funding/Support: We did not receive any funding to conduct this research.

Informed Consent: Informed consent was obtained from all the participants.

References

- Di Battista M, Marcucci E, Elefante E, Tripoli A, Governato G, Zucchi D, et al. One year in review 2018: systemic lupus erythematosus. *Clin Exp Rheumatol*. 2018;**36**(5):763-77. [PubMed: 30272543].
- Rua-Figueroa Fernandez de Larrinoa I. What is new in systemic lupus erythematosus. *Reumatol Clin*. 2015;**11**(1):27-32. doi: 10.1016/j.reuma.2014.09.004. [PubMed: 25455719].
- Rivas-Larrauri F, Yamazaki-Nakashimada MA. Systemic lupus erythematosus: Is it one disease? *Reumatol Clin*. 2016;**12**(5):274-81. doi: 10.1016/j.reuma.2016.01.005. [PubMed: 26922326].
- Guery JC. Why Is Systemic Lupus Erythematosus More Common in Women? *Joint Bone Spine*. 2019;**86**(3):297-9. doi: 10.1016/j.jbspin.2018.12.004. [PubMed: 30584922].
- Christou EAA, Banos A, Kosmara D, Bertsias GK, Boumpas DT. Sexual dimorphism in SLE: above and beyond sex hormones. *Lupus*. 2019;**28**(1):3-10. doi: 10.1177/0961203318815768. [PubMed: 30501463]. [PubMed Central: PMC6304686].
- Abulaban KM, Brunner HI. Biomarkers for childhood-onset systemic lupus erythematosus. *Curr Rheumatol Rep*. 2015;**17**(1):471. doi: 10.1007/s11926-014-0471-2. [PubMed: 25475594]. [PubMed Central: PMC4980820].
- Bundhun PK, Kumari A, Huang F. Differences in clinical features observed between childhood-onset versus adult-onset systemic lupus erythematosus: A systematic review and meta-analysis. *Medicine (Baltimore)*. 2017;**96**(37):e8086. doi: 10.1097/MD.00000000000008086. [PubMed: 28906413]. [PubMed Central: PMC5604682].
- Almaani S, Meara A, Rovin BH. Update on Lupus Nephritis. *Clin J Am Soc Nephrol*. 2017;**12**(5):825-35. doi: 10.2215/CJN.05780616. [PubMed: 27821390]. [PubMed Central: PMC5477208].
- Thakur N, Rai N, Batra P. Pediatric Lupus Nephritis-Review of Literature. *Curr Rheumatol Rev*. 2017;**13**(1):29-36. doi: 10.2174/1573397112666160404124308. [PubMed: 27041086].
- Smith EMD, Beresford MW. Urinary biomarkers in childhood lupus nephritis. *Clin Immunol*. 2017;**185**:21-31. doi: 10.1016/j.clim.2016.06.010. [PubMed: 27373868].
- Levy DM, Kamphuis S. Systemic lupus erythematosus in children and adolescents. *Pediatr Clin North Am*. 2012;**59**(2):345-64. doi: 10.1016/j.pcl.2012.03.007. [PubMed: 22560574]. [PubMed Central: PMC3348509].
- Sinha R, Raut S. Pediatric lupus nephritis: Management update. *World J Nephrol*. 2014;**3**(2):16-23. doi: 10.5527/wjn.v3.i2.16. [PubMed: 24868499]. [PubMed Central: PMC4023399].
- Lewandowski LB, Schanberg LE, Thielman N, Phuti A, Kalla AA, Okpechi I, et al. Severe disease presentation and poor outcomes among pediatric systemic lupus erythematosus patients in South Africa. *Lupus*. 2017;**26**(2):186-94. doi: 10.1177/0961203316660625. [PubMed: 27488473]. [PubMed Central: PMC5290292].
- Bennett M, Brunner HI. Biomarkers and updates on pediatric lupus nephritis. *Rheum Dis Clin North Am*. 2013;**39**(4):833-53. doi: 10.1016/j.rdc.2013.05.001. [PubMed: 24182857]. [PubMed Central: PMC4980821].
- Dahlstrom O, Sjowall C. The diagnostic accuracies of the 2012 SLICC criteria and the proposed EULAR/ACR criteria for systemic lupus erythematosus classification are comparable. *Lupus*. 2019;**28**(6):778-82. doi: 10.1177/0961203319846388. [PubMed: 31046572]. [PubMed Central: PMC6537028].
- Pinheiro SVB, Dias RF, Fabiano RCG, Araujo SA, Silva A. Pediatric lupus nephritis. *J Bras Nefrol*. 2019;**41**(2):252-65. doi: 10.1590/2175-8239-JBN-2018-0097. [PubMed: 30465590]. [PubMed Central: PMC6699445].
- National High Blood Pressure Education Program Working Group on High Blood Pressure in Children and Adolescents. The fourth report on the diagnosis, evaluation, and treatment of high blood pressure in children and adolescents. *Pediatrics*. 2004;**114**(2 Suppl 4th Report):555-76. [PubMed: 15286277].
- Schwartz GJ, Munoz A, Schneider MF, Mak RH, Kaskel F, Warady BA, et al. New equations to estimate GFR in children with CKD. *J Am Soc Nephrol*. 2009;**20**(3):629-37. doi: 10.1681/ASN.2008030287. [PubMed: 19158356]. [PubMed Central: PMC2653687].
- Hahn BH, McMahon MA, Wilkinson A, Wallace WD, Daikh DI, Fitzgerald JD, et al. American College of Rheumatology guidelines for screening, treatment, and management of lupus nephritis. *Arthritis Care Res (Hoboken)*. 2012;**64**(6):797-808. doi: 10.1002/acr.21664. [PubMed: 22556106]. [PubMed Central: PMC3437757].
- Bertsias GK, Tektonidou M, Amoura Z, Aringer M, Bajema I, Berden JH, et al. Joint European League Against Rheumatism and European Renal Association-European Dialysis and Transplant Association (EULAR/ERA-EDTA) recommendations for the management of adult and paediatric lupus nephritis. *Ann Rheum Dis*. 2012;**71**(11):1771-82. doi: 10.1136/annrheumdis-2012-201940. [PubMed: 22851469]. [PubMed Central: PMC3465859].
- Aljaberi N, Bennett M, Brunner HI, Devarajan P. Proteomic profiling of urine: implications for lupus nephritis. *Expert Rev Proteomics*. 2019;**16**(4):303-13. doi: 10.1080/14789450.2019.1592681. [PubMed: 30855196]. [PubMed Central: PMC6693508].
- Singh S, Abujam B, Gupta A, Suri D, Rawat A, Saikia B, et al. Childhood lupus nephritis in a developing country-24 years' single-center experience from North India. *Lupus*. 2015;**24**(6):641-7. doi: 10.1177/0961203315570166. [PubMed: 25712249].

23. Samanta M, Nandi M, Mondal R, Hazra A, Sarkar S, Sabui T, et al. Childhood lupus nephritis: 12 years of experience from a developing country's perspective. *Eur J Rheumatol*. 2017;4(3):178-83. doi: [10.5152/eurjrheum.2017.16117](https://doi.org/10.5152/eurjrheum.2017.16117). [PubMed: [29163999](https://pubmed.ncbi.nlm.nih.gov/29163999/)]. [PubMed Central: [PMC5685279](https://pubmed.ncbi.nlm.nih.gov/PMC5685279/)].
24. Malattia C, Martini A. Paediatric-onset systemic lupus erythematosus. *Best Pract Res Clin Rheumatol*. 2013;27(3):351-62. doi: [10.1016/j.berh.2013.07.007](https://doi.org/10.1016/j.berh.2013.07.007). [PubMed: [24238692](https://pubmed.ncbi.nlm.nih.gov/24238692/)].
25. Thurman JM, Nester CM. All Things Complement. *Clin J Am Soc Nephrol*. 2016;11(10):1856-66. doi: [10.2215/CJN.01710216](https://doi.org/10.2215/CJN.01710216). [PubMed: [27340286](https://pubmed.ncbi.nlm.nih.gov/27340286/)]. [PubMed Central: [PMC5053787](https://pubmed.ncbi.nlm.nih.gov/PMC5053787/)].
26. Soliman S, Mohan C. Lupus nephritis biomarkers. *Clin Immunol*. 2017;185:10-20. doi: [10.1016/j.clim.2016.08.001](https://doi.org/10.1016/j.clim.2016.08.001). [PubMed: [27498110](https://pubmed.ncbi.nlm.nih.gov/27498110/)].
27. Nowling TK, Gilkeson GS. Mechanisms of tissue injury in lupus nephritis. *Arthritis Res Ther*. 2011;13(6):250. doi: [10.1186/ar3528](https://doi.org/10.1186/ar3528). [PubMed: [22192660](https://pubmed.ncbi.nlm.nih.gov/22192660/)]. [PubMed Central: [PMC3334648](https://pubmed.ncbi.nlm.nih.gov/PMC3334648/)].
28. Flores-Mendoza G, Sanson SP, Rodriguez-Castro S, Crispin JC, Rosetti F. Mechanisms of Tissue Injury in Lupus Nephritis. *Trends Mol Med*. 2018;24(4):364-78. doi: [10.1016/j.molmed.2018.02.003](https://doi.org/10.1016/j.molmed.2018.02.003). [PubMed: [29526595](https://pubmed.ncbi.nlm.nih.gov/29526595/)].
29. Font J, Cervera R, Espinosa G, Pallares L, Ramos-Casals M, Jimenez S, et al. Systemic lupus erythematosus (SLE) in childhood: analysis of clinical and immunological findings in 34 patients and comparison with SLE characteristics in adults. *Ann Rheum Dis*. 1998;57(8):456-9. doi: [10.1136/ard.57.8.456](https://doi.org/10.1136/ard.57.8.456). [PubMed: [9797549](https://pubmed.ncbi.nlm.nih.gov/9797549/)]. [PubMed Central: [PMC1752720](https://pubmed.ncbi.nlm.nih.gov/PMC1752720/)].
30. Batinic D, Milosevic D, Coric M, Topalovic-Grkovic M, Jelusic M, Turudic D. Lupus nephritis in Croatian children: clinicopathologic findings and outcome. *Lupus*. 2015;24(3):307-14. doi: [10.1177/0961203314563133](https://doi.org/10.1177/0961203314563133). [PubMed: [25492940](https://pubmed.ncbi.nlm.nih.gov/25492940/)].
31. Sevinc E, Bilge I, Sirin A, Kilicaslan I, Nayir A, Oktem F, et al. Lupus nephritis in children: prognostic significance of clinicopathological findings. *Nephron*. 2001;87(2):118-26. doi: [10.1159/000045899](https://doi.org/10.1159/000045899). [PubMed: [11244305](https://pubmed.ncbi.nlm.nih.gov/11244305/)].
32. das Chagas Medeiros MM, Bezerra MC, Braga FN, da Justa Feijao MR, Gois AC, Reboucas VC, et al. Clinical and immunological aspects and outcome of a Brazilian cohort of 414 patients with systemic lupus erythematosus (SLE): comparison between childhood-onset, adult-onset, and late-onset SLE. *Lupus*. 2016;25(4):355-63. doi: [10.1177/0961203315606983](https://doi.org/10.1177/0961203315606983). [PubMed: [26405022](https://pubmed.ncbi.nlm.nih.gov/26405022/)].
33. Srivastava P, Abujam B, Misra R, Lawrence A, Agarwal V, Aggarwal A. Outcome of lupus nephritis in childhood onset SLE in North and Central India: single-centre experience over 25 years. *Lupus*. 2016;25(5):547-57. doi: [10.1177/0961203315619031](https://doi.org/10.1177/0961203315619031). [PubMed: [26637291](https://pubmed.ncbi.nlm.nih.gov/26637291/)].
34. Vachvanichsanong P, McNeil E. Pediatric lupus nephritis: more options, more chances? *Lupus*. 2013;22(6):545-53. doi: [10.1177/0961203313485490](https://doi.org/10.1177/0961203313485490). [PubMed: [23629826](https://pubmed.ncbi.nlm.nih.gov/23629826/)].
35. Groot N, de Graeff N, Marks SD, Brogan P, Avcin T, Bader-Meunier B, et al. European evidence-based recommendations for the diagnosis and treatment of childhood-onset lupus nephritis: the SHARE initiative. *Ann Rheum Dis*. 2017;76(12):1965-73. doi: [10.1136/annrheumdis-2017-211898](https://doi.org/10.1136/annrheumdis-2017-211898). [PubMed: [28877866](https://pubmed.ncbi.nlm.nih.gov/28877866/)].