

## Evaluation of MALAT1 promoter DNA methylation patterns in early colorectal lesions and tumors

Vahid Chaleshi<sup>1</sup>, Shiva Irani<sup>1</sup>, Masoud Alebouyeh<sup>2</sup>, Reza Mirfakhraie<sup>3</sup>, Hamid Asadzadeh Aghdaei<sup>4</sup>

<sup>1</sup>Department of Biology, Science and Research Branch, Islamic Azad University, Tehran, Iran

<sup>2</sup>Foodborne and Waterborne Diseases Research Center, Research Institute for Gastroenterology and Liver Diseases, Shahid Beheshti University of Medical Sciences, Tehran, Iran

<sup>3</sup>Department of Medical Genetics, Shahid Beheshti University of Medical Sciences, Tehran, Iran

<sup>4</sup>Basic and Molecular Epidemiology of Gastrointestinal Disorders Research Center, Research Institute for Gastroenterology and Liver Diseases, Shahid Beheshti University of Medical Sciences, Tehran, Iran

### ABSTRACT

**Aim:** This study set out to determine the effect of methylation on MALAT1 gene in primary colorectal lesions and tumors to gain further knowledge about the diagnostic and prognostic value of MALAT1.

**Background:** Metastasis-associated lung adenocarcinoma transcript 1 (MALAT1) is one of the long non-coding RNAs that plays an important role in invasion, cell proliferation, and metastasis of various cancers. However, there is insufficient information on the association between MALAT1 and the methylation process as well as its role in the development of colorectal cancer.

**Methods:** Methylation pattern of MALAT1 promoter was determined by Methylation-Specific Polymerase Chain Reaction (MSP) in 86 colorectal primary lesions, tumors, and normal specimens. MALAT1 methylation pattern was compared in tumor and polyp tissue. In order to obtain more accurate results, we investigated the association between MALAT1 promoter methylation pattern and clinicopathologic factors in patients.

**Results:** The results indicated that the MALAT1 promoter methylation pattern in the tumor tissue, primary lesion tissue, and normal was not significantly different ( $p=0.430$ ). Comparison of the MALAT1 promoter methylation pattern between polyp types and tumor tissue groups was not significant either ( $p=0.437$ ). Surprisingly, the methylation frequency of MALAT1 methylation was significantly higher in colon lesions than in their rectum lesion ( $p = 0.035$ ). In addition, no significant hypermethylation of MALAT1 was observed between the other patients' clinicopathological data in both polyp 46/66 and tumor tissues 20/66.

**Conclusion:** This study dealt with determining the effect of methylation on MALAT1 gene in primary colorectal lesions and tumors to gain further knowledge about the diagnostic and prognostic value of MALAT1.

**Keywords:** Long non-coding RNAs, Colorectal cancer, Colonic polyps, Metastasis-associated lung adenocarcinoma transcript 1, MALAT1, DNA Methylation.

(Please cite as: Chaleshi V, Irani SH, Alebouyeh M, Mirfakhraie R, Asadzadeh Aghdaei H. Evaluation of MALAT1 promoter DNA methylation patterns in early colorectal lesions and tumors. *Gastroenterol Hepatol Bed Bench* 2019;12(Suppl.1):S58-S65).

### Introduction

Colorectal cancer is one of the major causes of mortality worldwide and claims over 9% of all prevalence causes of cancer (1, 2). It is the third

common type of cancer worldwide and fourth frequent cause of death (3).

Symptoms of the disease include a rapid change in bowel habits, including diarrhea or constipation, rectal or stool bleeding, persistent abdominal discomfort, seizures, or pain (4). These symptoms occur at an early stage of the disease and no diagnosis test can be made for initial stages. Thus, it is most often diagnosed in stages three and four, when cancer spreads throughout

Received: 9 September 2019 Accepted: 28 November 2019

**Reprint or Correspondence:** Hamid Asadzadeh Aghdaei, MD. Basic and Molecular Epidemiology of Gastrointestinal Disorders Research Center, Research Institute for Gastroenterology and Liver Diseases, Shahid Beheshti University of Medical Sciences, Tehran.

**E-mail:** hamid.assadzadeh@gmail.com

**ORCID ID:** 0000-0002-9382-9840

the entire body (5). Detection of diagnostic biomarkers can be used to improve the treatment.

Practically, all CRCs progress from colorectal polyps and it can may take years for to become cancerous (6, 7). Polyps have various types, including adenomatous polyp, hyperplastic polyp (hp), inflammatory polyp, etc. It is generally accepted that most adenomatous polyps can be converted to colon carcinoma (8, 9). The prevalence of HP is not clear yet; HPs are the smallest type of polyp and have a very low risk of developing cancer (10). Inflammatory polyps occur more frequently in inflammatory bowel disease (IBD) patients. They are also known as pseudo-polyps, but are produced as a response to chronic inflammation in the colon and are at high risk to develop into colon cancer (11).

Methylation of CpG islands within the promoter region appear to decrease gene expression, though it is only typical of two kinds of methylation that are related with cancer development: type A (for age-related methylation, and type C (for cancer-specific methylation (12).

Noncoding RNAs (ncRNAs) are functional RNA molecules that play an important role in regulating post-transcriptional gene expression. Most ncRNAs interact with RNA-binding proteins (13, 14). However, their mechanism has not yet been fully elucidated (15). LncRNAs play an important role in the pathogenesis of various diseases (16).

Long non-coding RNAs (lncRNAs) are a large and diverse class of transcribed RNA molecules of more than 200 nucleotides in length. Recently, lncRNAs have received much attention in processes such as cancer, metastasis, and drug resistance (17, 18)

Further, lncRNAs appear to have a unique functional potential due to their ability in interacting with almost all biomolecules. Metastasis-associated lung adenocarcinoma transcript 1 (*MALATI*) is an oncogene associated with tumor invasion in non-small cell lung cancer which is regulated by DNA methylation (19). It is generally overexpressed in the tumor and metastatic state of the disease. Also, a functional study has shown the role of metastatic suppressor for *MALATI* (20). Overexpression of *MALATI* has been observed in a large number of tumor types including breast, pancreas, colon, prostate, and liver (17, 21-23).

*MALATI* regulates the methylation status of histone chromatin through binding to the target PRC2 complex (24, 25). Due to its multiple roles in different types of cancer, *MALATI* has recently received much attention as a therapeutic target for clinical applications.

The present study was designed to determine the effect of promoter methylation of *MALATI* gene in early colorectal lesions and tumors to gain further knowledge about the diagnostic and prognostic value of *MALATI*.

## Methods

### Patients and Sampling

Tissue samples were collected from 66 patients and 20 normal. A total of 20 patients were all first diagnosed with a tumor while 46 patients with colorectal hyperplastic, adenomas, and inflammatory polyp tissues, respectively. Patient consent was received during May 2014 to 2016 from random patient samples referring to the Research Institute for Gastroenterology and Liver Diseases (RIGLD), Taleghani Hospital, Shahid Beheshti University of Medical Sciences, Tehran, Iran, who had undergone a colonoscopic procedure for either screening or polypectomy purposes. Each tissue specimen was separated into two parts. One part of the specimens was fresh frozen in liquid nitrogen and stored at -80 °C for further evaluation, while the second part was fixed in cold 10% neutral buffered formalin for 24 h and then embedded in a paraffin block. Histopathological examination of tissue specimens was confirmed following evaluation by a pathologist. Non-Iranian patients and those who had no pathological data were dismissed according to study exclusion criteria. Demographic and clinicopathological data were obtained from the questionnaire and histopathology reports. Location of tumor was divided into colon and rectum. Cancers were staged according to the Tumor-Node-Metastasis (TNM) classification of the Union for International Cancer Control (UICC) (26).

### Genomic DNA Extraction and Sodium Bisulfite Treatment

DNA was extracted from a freshly frozen tissue using Qiagen QIAamp DNA Mini Kit (Cat. 51324, Qiagen, Germany) according to the manufacturer's instructions (QIAamp DNA Mini kit, QIAGEN GmbH, Hilden, Germany). The concentration of the extracted DNA was measured by Nanodrop (Labtech; UK) @260

and 280 nm. Bisulfite conversion of each DNA templates was performed using the Qiagen EpiTect Bisulfite Kit (Cat. 59104, Qiagen, Germany), according to the manufacturer's instructions. The modified DNA was stored at -20°C until use.

### Methylation-Specific Polymerase Chain Reaction (MSP)

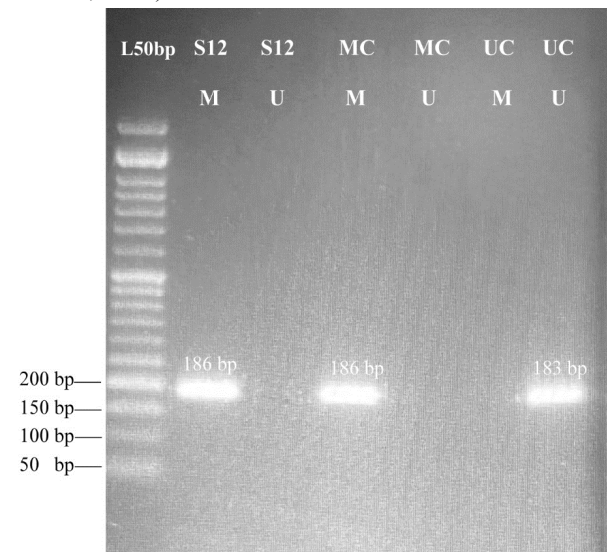
The promoter hypermethylation of MALAT1 was detected by methylation-specific PCR (MSP) assay utilizing the above-mentioned bisulfite modified DNA as a template. We analyzed the MALAT1 sequence with UCSC genome browser, where the CpG islands 441bp was found at position chr11:65497487-65497927, while the CpG islands 441bp within the upstream of the human MALAT1 gene. MethPrimer (<http://www.urogene.org/methprimer/>) and Gene Runner software (version 4.0.6.68 Beta) were used to design two primer pairs, each specifically designed to attach to methylated or unmethylated strands. Our MSP designed primers were 5'-TTTCGGCGTTTGTGTTTTGAC-3' (forward) and 5'-AACTAAACTTCCCGACGC-3' (reverse) for the methylated sequence of MALAT1, while they were 5'-TGGTGTTTGTGTTTTGATGTAG-3' (forward) and 5'-AACTAAACTTCCCAACACC-3' (reverse) for its unmethylated sequence.

Then, PCR amplification with MSP primers was performed using 11 µl of Master Mix and 1.5µl of bisulfite-converted DNA in a final reaction mixture of 12.5 µL. The master mix included 0.5 µL of the forward primer (10 pmol concentration), 0.5 µl of the reverse primer (10 pmol concentration), 1.25 µl of 10x MSP PCR buffer, 0.25µL of 10 mM dNTP Mix, 0.5 µL of Mg, 2.5 µL of Q PCR buffer, 7.4 µl of nuclease free H<sub>2</sub>O, and 0.1µL of HotStart Taq DNA Polymerase (Qiagene, Germany). The optimal annealing temperature for both forward and reverse primers was 61°C; the product size for the methylated primer was 186bp while that of unmethylated primer was 183bp. EpiTect PCR Control DNA Set (EpiTect PCR control DNA; Qiagen; Cat No; 59695) was utilized as a positive control for methylation and negative control for fully unmethylated DNA. PCR products were evaluated by electrophoresis on green viewer stained 2% agarose gel and visualized with a UV transilluminator (Figure 1). All of the samples were amplified twice for checking the accuracy of results.

Occurrence of two bands in both M and U wells indicates Hemi methylated alleles which are supposed to be due to contamination with the normal colonic mucosa.

### Statistical Analysis

Variables were reported as number and percentages. The extent of methylation of MALAT1 in different tissue groups and clinicopathologic parameters were evaluated using the  $\chi^2$  or Fisher exact test. P < 0.05 was considered as a statistically significant difference. Dataset was analyzed using SPSS (SPSS Inc. Chicago, Illinois, USA).



**Figure 1.** Agarose gel electrophoresis of methylation specific PCR products for MALAT1 methylated and unmethylated promoter; L, DNA ladder 50 bp; M, methylated primer; U, Un-methylated primer, MC, methylated control sequence; UC, unmethylated control sequence

## Results

### General Statistical Information

This study was performed on 86 fresh/frozen colorectal tissue samples consisting of 46 polyps (24 (52.2%) male and 22 (47.8%) female), 20 tumours (7 (35%) male and 13 (65%) female), and 20 normal (8 (9.2%) male and 13 (14.9%) female). The polyp group consisted of 28.3, 50, and 21.7% hyperplastic polyps, adenomas and inflammatory polyp tissues, respectively.

The mean age of the patients with polyp and tumor was 49.71 (SD: 17.54) and 56.50 (SD: 15.61) years and the normal was 55.5 (SD: 11.13), respectively; their means ( $\bar{x}$ ) and SDs based on Body Mass Index (BMI) were 25.74±3.42 and 25.51±2.38 Kg/m<sup>2</sup> and the normal was 25.6±4.29 Kg/m<sup>2</sup>, respectively. In our

research, 9 (19.6%) of the polyp participants had a family history of cancer and among the 20 tumor samples, only a small number of CRC patients 4 (16%) indicated a family history of cancer. Colonoscopic findings of patients with colorectal polyps showed that patients had several polyps: 31 (67.4%) had less than 5 polyps, 10 (21.7%) had 5 to 10, and 5 (10.9%) had more than ten polyps. Furthermore, 27 (58.7%) of the primary lesions were located in colon region and 19 (41.3%) located in rectum. In the patients with colon cancer, 12 (60%) had colon tumor and 8 (40%) had rectum tumor. Accurately, 6 (30 %) and 14 (70%) colon cancer individuals showed tumor size of <5 and ≥5 cm, respectively. Among the colon cancer patients, 9 (45%) cases were classified as stage I, 2 (10%) stage II, and 9 (45%) stage III. The tumor grade was I, II, and

III in 9 (45%), 9 (45%) and 2 (10%) cases, respectively.

**Analysis of MALAT1 promoter methylation status in normal compared to early colorectal lesions / tumor tissue**

The methylation frequency of *MALAT1* was 25% in cancerous tissues, 34.8% in primary lesion tissue, and 20% in normal tissues, respectively. The Chi-square test did not show any significant differences between cancerous tissues, primary lesion tissue, and normal tissue (p=0.430). In addition, polyp tissues categorized as pathological report to hyperplastic polyps, adenomas and inflammatory polyp tissues and methylation pattern of promoter *MALAT1* compared with tumor group, determination of methylation percentage in each group showed that, 39.1%, 30.8%, 30%, 55% of hyperplastic, adenomas, inflammatory polyp tissues and tumor tissues were methylated, respectively. However, none of these

**Table 1.** Evaluation of *MALAT1*, promoter methylation pattern in tumor tissue and polyp tissue

Variable	<i>MALAT1</i>		P-value
	Methylated, n (%)	Unmethylated, n (%)	
Normal & Patient Tissues			0.430
Normal Tissue	4 (20.0)	16 (80)	
Primary Lesions	16 (34.8)	30 (65.2)	
Tumor tissue	5 (25)	15 (75)	
Polyp Type & Tumor tissues			0.437
Adenomatous polyp	9(39.1)	14(60.9)	
Hyperplastic polyp	4(30.8)	9(69.2)	
Inflammatory polyp	3(30)	7(70)	
Tumor tissue	11(55)	9(45)	

*MALAT1*, metastasis-associated lung adenocarcinoma transcript 1

**Table 2.** Correlation between clinicopathological characteristics and *MALAT1*, promoter methylation pattern in the 46 patients with colon polyps

Variable	<i>MALAT1</i>		P-value
	Methylated, n (%)	Unmethylated, n (%)	
Family history of colon polyps			0.143
Yes	6 (66.7)	3 (33.3)	
No	10 (38.5)	16 (61.5)	
Type of polyp			0.481
Adenomatous	11 (47.8)	12 (52.2)	
Hyperplastic	4 (30.8)	9 (69.2)	
Inflammatory	3 (30.0)	7(70.0)	
Location of polyp			0.035
Colon	14 (51.9)	13(48.1)	
Rectum	4 (21.1)	15 (78.9)	
Number of polyps			0.531
<5	12 (38.7)	19 (61.3)	
5-10	5 (50.0)	5 (50.0)	
>10	1 (20.0)	4 (80.0)	
Size of polyp			0.979
<5 mm	3 (37.5)	5 (62.5)	
5-10 mm	5(38.5)	8 (61.5)	
>10 mm	5 (41.7)	7 (58.3)	

*MALAT1*, metastasis-associated lung adenocarcinoma transcript 1

differences were statistically significant ( $p=0.437$ ). Table 1 provides more details.

**Evaluation of the relationship between the methylation of the MALAT1 promoter and polyp clinical characteristics**

According to our findings, *MALAT1* methylation was significantly higher in colon lesions in comparison with their rectum lesions,  $p = 0.035$ . The methylation frequency among colon and rectum region was 51.9% and 21.1%, respectively. Although 62.5 % and 61.5% of  $\leq 5$  mm and 5-10 mm polyp sizes were unmethylated, there was no significant difference between the size of the lesions. No significant correlations were observed either between the DNA methylation of *MALAT1* promoter and the other patients' clinicopathological data, such as family history (FH), type of polyp, and number of polyps (Table 2).

**Evaluation of the relationship between the methylation of the MALAT1 promoter and tumor spacemen's clinical characteristics**

The specimens that exhibited invasion (20 tumor tissues) had an equal frequency of *MALAT1* unmethylation as compared to the group without family history of colon cancer, and this difference was not statistically significant ( $P = 0.197$ ). Grade I tumors had a higher frequency of methylation, but no statistically significant difference was observed between the frequency of *MALAT1* unmethylation and grade I and II & III tumor tissue ( $P = 0.436$ ). On the other hand, none

of clinicopathological variables showed any correlation with *MALAT1* methylation status in the tumor tissue (Table 3).

**Discussion**

LncRNAs play an important role in different types of cancers (27). *MALAT1* is one of the most important LncRNAs located on chromosome 11q13.1; it lacks an (open reading frame) ORF, thus making translation impossible (28). The main function of this gene is not completely known. However, this gene plays different roles in different cancers. In cervical cancer, it causes cell proliferation and invasion (29). *MALAT1* promotes esophageal squamous cell proliferation and metastasis (19) (30) and can also increase glioblastoma cell migration (31). *MALAT1* also increases migration and invades neuroblastoma cells (32). *MALAT1* plays a critical role in the metastasis phenotype of lung, gastric, and bladder cancers (20, 33, 34). Recently, it has been observed that *MALAT1* has a metastatic role in colorectal cancer (35). Numerous studies on this gene have shown that *MALAT1* plays a vital role in tumor progression and can be used as a tumor prognostic marker. It has also been proved to be overexpressed in most cancers. In a study, *MALAT1* expression also significantly increased in lung cancer cells as compared to NC and adjacent lung cancer tissue (19).

Therefore, research on methylation of this gene is important as gaining further knowledge and

**Table 3.** Correlation between clinicopathological characteristics and *MALAT1*, promoter methylation pattern in 20 patients with colon cancer tissue

Variable	<i>MALAT1</i>		P-value
	Methylated, n (%)	Unmethylated, n (%)	
Family history of colon cancer			0.197
Yes	2 (50)	2 (50)	
No	3 (18.8)	13 (81.3)	
Tumor site			1
Colon	3 (25)	9 (75)	
Rectum	2 (25)	6 (75)	
Grade			0.436
I	3 (33.3)	6 (66.7)	
II & III	2 (22.2)	7 (77.8)	
Stage			0.795
I & II	3 (27.3)	8 (72.7)	
III	2 (22.2)	7 (77.8)	
Size of tumor			0.573
<5 cm	2 (33.3)	4 (66.7)	
≥5 cm	3 (21.4)	11 (78.6)	

*MALAT1*, metastasis-associated lung adenocarcinoma transcript 1



information can assist in developing diagnostic methods, as well as early detection and leads to the discovery of new epigenetic targeted drugs.

According to our findings, MALAT1 methylation was significantly higher in colon lesions in comparison with their rectum lesion. According to our knowledge, evaluation of aberrant MALAT1 methylation pattern in different colon region of primary lesion has been done in our study for the first time. There have been many studies on the abnormal expression of MALAT1 in a variety of diseases; however, studies on MALAT1 promoter methylation and its role in cancer are scarce. Also, to the best of our knowledge, no studies have still focused on the association between the methylation in the promoter of MALAT1 and the risk of colorectal cancer.

According to a previous functional study by Liwen Hu et al., CpG island methylation occurs in the MALAT1 promoter in esophageal cancer tissue which does not affect MALAT1 expression, while amplification of MALAT1 was reportedly significantly correlated with MALAT1 over-expression (36). Furthermore, another study on lung cancer observed reduced MALAT1 promoter methylation, which is subsequently associated with increased MALAT1 expression (19). The reason for this inconsistency may be attributed to the cancer types. Recent evidence at the molecular level suggests that MALAT1 lncRNA is recruited to regulate pre-mRNA splicing, though this outcome is not supported by MALAT1 mice experimental model systems (37, 38). Yang et al. reported that silencing MALAT1 can inhibit colon cancer proliferation, growth, and metastasis (39). Also, Zheng et al. demonstrated that the expression of MALAT1 in colon cancer tissues is higher in stage II&III and can be used as a biomarker of stage II & III prognosis (40).

According to the information obtained in our study, we examined the association between MALAT1 gene promoter methylation pattern and clinicopathologic factors including family history of colon cancer, tumor site, size, grade and stage in 20 patients with colorectal cancer. There was no significant relationship between these parameters and MALAT1 methylation pattern. We propose that other molecular and epigenetic mechanisms may be involved in MALAT1 gene sequencing.

A possible explanation for this might be associated with single nucleotide Polymorphism (SNP). Previous

studies have reported, SNP in promoter region of functional lncRNAs that may have been associated with cancer susceptibility through impact on the stability and efficiency of transcription (41, 42). Li Y et al. investigated the impact of association between genetic variations in the MALAT1 promoter region and colon cancer risk. Li Y et al. have reported rs1194338 was significantly correlated to reduced susceptibility of colon cancer, with an odds ratio (OR) value of 0.70 [95% confidence interval (CI)=0.49-0.99] (43).

In addition, MALAT1 lncRNA is subject to post-transcriptional 5-methylcytosine (m5C) modifications, but the functional reasons for these changes remain unknown (44). Most studies in the field of molecular mechanisms have reported that MALAT1 regulates tumor progression and metastasis through the following: 1) MALAT1 serves a competitive endogenous RNA that contains many putative binding sites of miRNAs; 2) MALAT1 interacts with Polycomb repressive complex 2 (PRC2) which catalyzes histone H3K27 methylation, which plays important roles in transcriptional repression and cancer; 3) signaling pathways including PI3K-AKT, MAPK, WNT, and NF- $\kappa$ B have been reported to be regulated by MALAT1 in cancer (45-47).

Nevertheless, we suggest that another possible area of future research would be to investigate why a significantly higher methylation frequency occurred in colon lesions as compared with their rectum counterparts.

### Acknowledgments

We would like to thank all patients who participated in the study which was conducted with the support of the Research Institute for Gastroenterology and Liver Diseases, Shahid Beheshti University of Medical Sciences, Tehran, Iran.

### Conflict of interests

The authors declare that they have no conflict of interest.

### References

1. Aran V, Victorino AP, Thuler LC, Ferreira CG. Colorectal cancer: epidemiology, disease mechanisms and interventions to reduce onset and mortality. Clin Colorectal Cancer 2016;15:195-203.

2. Boyle P, Langman JS. ABC of colorectal cancer: Epidemiology. *BMJ* 2000;321:805-8.
3. Haggard FA, Boushey RP. Colorectal cancer epidemiology: incidence, mortality, survival, and risk factors. *Clin Colon Rectal Surg* 2009;22:191-7.
4. Croome KP, Gores GJ, Rosen CB. Surgical Treatment of Primary Sclerosing Cholangitis. *Shackelford's Surgery of the Alimentary Tract, 2 Volume Set*: Elsevier; 2019. p. 1378-85.
5. Olde Bekkink M, McCowan C, Falk GA, Teljeur C, Van de Laar FA, Fahey T. Diagnostic accuracy systematic review of rectal bleeding in combination with other symptoms, signs and tests in relation to colorectal cancer. *Br J Cancer* 2010;102:48-58.
6. Noffsinger AE. Serrated polyps and colorectal cancer: new pathway to malignancy. *Annu Rev Pathol* 2009;4:343-64.
7. Levine JS, Ahnen DJ. Clinical practice. Adenomatous polyps of the colon. *N Engl J Med* 2006;355:2551-7.
8. Aghdaei HA, Mojarad EN, Ashtari S, Pourhoseingholi MA, Chaleshi V, Anaraki F, et al. Polyp detection rate and pathological features in patients undergoing a comprehensive colonoscopy screening. *World J Gastrointest Pathophysiol* 2017;8:3.
9. Aarons CB, Shanmugan S, Bleier JI. Management of malignant colon polyps: current status and controversies. *World J Gastroenterol* 2014;20:16178.
10. Schachschal G, Sehner S, Choschzick M, Aust D, Brandl L, Vieth M, et al. Impact of reassessment of colonic hyperplastic polyps by expert GI pathologists. *Int J Colorectal Dis* 2016;31:675-83.
11. Cannizzaro R, Magris R, Maiero S, Fornasari M, Canzonieri V. Classification of Colon Polyps and Risk of Neoplastic Progression. In *Colon Polypectomy 2018* (pp. 1-11). Springer, Cham.
12. Mojarad EN, Kuppen PJ, Aghdaei HA, Zali MR. The CpG island methylator phenotype (CIMP) in colorectal cancer. *Gastroenterol Hepatol Bed Bench* 2013;6:120-8.
13. Ranjbar R, Chaleshi V, Aghdaei HA, Morovvati S. Investigating the association between miR-608 rs4919510 and miR-149 rs2292832 with Colorectal Cancer in Iranian Population. *Microna* 2018;7:100-6.
14. Chaleshi V, Tajali R, Savabkar S, Zali N, N Mojarad E, Haghazali M, et al. Lack of association between NOD2 rs3135500 and IL12B rs1368439 microRNA binding site SNPs and colorectal cancer susceptibility in an Iranian population. *Microna* 2016;5:152-6.
15. Peng C, Han S, Zhang H, Li Y. RPITER: A Hierarchical Deep Learning Framework for ncRNA-Protein Interaction Prediction. *Int J Mol Sci* 2019;20:1070.
16. Gupta SC, Awasthee N, Rai V, Chava S, Gunda V, Challagundla KB. Long non-coding RNAs and nuclear factor-B crosstalk in cancer and other human diseases. *Biochim Biophys Acta Bioenerg* 2019;1873:188316.
17. Wilusz JE, Sunwoo H, Spector DL. Long noncoding RNAs: functional surprises from the RNA world. *Genes Dev* 2009;23:1494-504.
18. Mercer TR, Dinger ME, Mattick JS. Long non-coding RNAs: insights into functions. *Nat Rev Genet* 2009;10:155.
19. Guo F, Guo L, Li Y, Zhou Q, Li Z. MALAT1 is an oncogenic long non-coding RNA associated with tumor invasion in non-small cell lung cancer regulated by DNA methylation. *Int J Clin Exp Pathol* 2015 Dec 1;8:15903-10.
20. Gutschner T, Hämmerle M, Eissmann M, Hsu J, Kim Y, Hung G, et al. The noncoding RNA MALAT1 is a critical regulator of the metastasis phenotype of lung cancer cells. *Cancer Res* 2013;73:1180-9.
21. Arun G, Spector DL. MALAT1 long non-coding RNA and breast cancer. *RNA Biol* 2019;16:860-863.
22. Lin R, Maeda S, Liu Ca, Karin M, Edgington TS. A large noncoding RNA is a marker for murine hepatocellular carcinomas and a spectrum of human carcinomas. *Oncogene* 2007;26:851-8.
23. Wang X, Li M, Wang Z, Han S, Tang X, Ge Y, et al. Silencing of long noncoding RNA MALAT1 by miR-101 and miR-217 inhibits proliferation, migration, and invasion of esophageal squamous cell carcinoma cells. *J Biol Chem* 2015;290:3925-35.
24. Yang L, Lin C, Liu W, Zhang J, Ohgi KA, Grinstein JD, et al. ncRNA-and Pc2 methylation-dependent gene relocation between nuclear structures mediates gene activation programs. *Cell* 2011;147:773-88.
25. Guil S, Soler M, Portela A, Carrère J, Fonalleras E, Gómez A, et al. Intronic RNAs mediate EZH2 regulation of epigenetic targets. *Nat Struct Mol Biol* 2012;19:664.
26. Sobin LH, Gospodarowicz MK, Wittekind C, editors. *TNM classification of malignant tumours*. John Wiley & Sons, 2011.
27. Pandey GK, Mitra S, Subhash S, Hertwig F, Kanduri M, Mishra K, et al. The risk-associated long noncoding RNA NBAT-1 controls neuroblastoma progression by regulating cell proliferation and neuronal differentiation. *Cancer Cell* 2014;26:722-37.
28. Li X, Chen N, Zhou L, Wang C, Wen X, Jia L, et al. Genome-wide target interactome profiling reveals a novel EEF1A1 epigenetic pathway for oncogenic lncRNA MALAT1 in breast cancer. *Am J Cancer Res* 2019;9:714.
29. Guo F, Li Y, Liu Y, Wang J, Li Y, Li G. Inhibition of metastasis-associated lung adenocarcinoma transcript 1 in CaSki human cervical cancer cells suppresses cell proliferation and invasion. *Acta Biochim Biophys Sin* 2010;42:224-9.
30. Wang W, Zhu Y, Li S, Chen X, Jiang G, Shen Z, et al. Long noncoding RNA MALAT1 promotes malignant development of esophageal squamous cell carcinoma by targeting  $\beta$ -catenin via Ezh2. *Oncotarget* 2016;7:25668.
31. Vassallo I, Zinn P, Lai M, Rajakannu P, Hamou M, Hegi ME. WIF1 re-expression in glioblastoma inhibits migration through attenuation of non-canonical WNT signaling by

- downregulating the lncRNA MALAT1. *Oncogene* 2016;35:12.
32. Tee AE, Ling D, Nelson C, Atmadibrata B, Dinger ME, Xu N, et al. The histone demethylase JMJD1A induces cell migration and invasion by up-regulating the expression of the long noncoding RNA MALAT1. *Oncotarget* 2014;5:1793.
33. Okugawa Y, Toiyama Y, Hur K, Toden S, Saigusa S, Tanaka K, et al. Metastasis-associated long non-coding RNA drives gastric cancer development and promotes peritoneal metastasis. *Carcinogenesis* 2014;35:2731-9.
34. Fu X, Liu Y, Zhuang C, Liu L, Cai Z, Huang W. Synthetic artificial microRNAs targeting UCA1-MALAT1 or c-Myc inhibit malignant phenotypes of bladder cancer cells T24 and 5637. *Mol Biosyst* 2015;11:1285-9.
35. Xu C, Yang M, Tian J, Wang X, Li Z. MALAT-1: a long non-coding RNA and its important 3'end functional motif in colorectal cancer metastasis. *Int J Oncol* 2011;39:169-75.
36. Hu L, Wu Y, Tan D, Meng H, Wang K, Bai Y, et al. Up-regulation of long noncoding RNA MALAT1 contributes to proliferation and metastasis in esophageal squamous cell carcinoma. *J Exp Clin Cancer Res* 2015;34:7.
37. Hutchinson JN, Ensminger AW, Clemson CM, Lynch CR, Lawrence JB, Chess A. A screen for nuclear transcripts identifies two linked noncoding RNAs associated with SC35 splicing domains. *BMC Genomics* 2007;8:39.
38. Tripathi V, Ellis JD, Shen Z, Song DY, Pan Q, Watt AT, et al. The nuclear-retained noncoding RNA MALAT1 regulates alternative splicing by modulating SR splicing factor phosphorylation. *Mol Cell* 2010;39:925-38.
39. Yang MH, Hu ZY, Xu C, Xie LY, Wang XY, Chen SY, et al. MALAT1 promotes colorectal cancer cell proliferation/migration/invasion via PRKA kinase anchor protein 9. *Biochim Biophys Acta* 2015;1852:166-74.
40. Zheng HT, Shi DB, Wang YW, Li XX, Xu Y, Tripathi P, et al. High expression of lncRNA MALAT1 suggests a biomarker of poor prognosis in colorectal cancer. *Int J Clin Exp Pathol* 2014;7:3174.
41. LeVan TD, Bloom JW, Bailey TJ, Karp CL, Halonen M, Martinez FD, et al. A common single nucleotide polymorphism in the CD14 promoter decreases the affinity of Sp protein binding and enhances transcriptional activity. *J Immunol* 2001;167:5838-44.
42. Boersma BJ, Howe TM, Goodman JE, Yfantis HG, Lee DH, Chanock SJ, et al. Association of breast cancer outcome with status of p53 and MDM2 SNP309. *J Natl Cancer Inst* 2006;98:911-9.
43. Li Y, Bao C, Gu S, Ye D, Jing F, Fan C, et al. Associations between novel genetic variants in the promoter region of MALAT1 and risk of colorectal cancer. *Oncotarget* 2017;8:92604.
44. Amort T, Rieder D, Wille A, Khokhlova-Cubberley D, Riml C, Trixl L, et al. Distinct 5-methylcytosine profiles in poly (A) RNA from mouse embryonic stem cells and brain. *Genome Biol* 2017;18:1.
45. Wang X, Sehgal L, Jain N, Khashab T, Mathur R, Samaniego F. LncRNA MALAT1 promotes development of mantle cell lymphoma by associating with EZH2. *J Transl Med* 2016;14:346.
46. Sun Y, Ma L. New insights into long non-coding RNA malat1 in cancer and metastasis. *Cancers* 2019;11:216.
47. Liang J, Liang L, Ouyang K, Li Z, Yi X. MALAT 1 induces tongue cancer cells' EMT and inhibits apoptosis through Wnt/ $\beta$ -catenin signaling pathway. *J Oral Pathol Med* 2017;46:98-105.