



Effect of Micro Glass Flake on Morphological and Rheological Behavior of Epoxy Vinyl Ester Composite Coatings

A. Ghadami¹, M. Ehsani^{2,3*}, H. Haddadi⁴, B. Kaffashi⁵

¹ Department of Chemical Engineering, Faculty of Engineering, Central Tehran Branch, Islamic Azad University, P.O. Box: 1469669191, Tehran, Iran.

² Department of Polymer Engineering, Faculty of Engineering, South Tehran Branch, Islamic Azad University, P.O. Box: 4435-11365, Tehran, Iran.

³ Department of polymer processing, Iran Polymer and Petrochemical Institute, P.O. Box: 14965-115, Tehran, Iran.

⁴ School of Chemical Engineering, Department of Polymer, College of Engineering, University of Tehran, P.O. Box 11365-4563, Tehran, Iran.

⁵ School of Chemical Engineering, Department of Polymer, College of Engineering, University of Tehran, P.O. Box 11365-4563, Tehran, Iran.

ARTICLE INFO

Article history:

Received: 29 Aug 2016

Final Revised: 12 Dec 2016

Accepted: 20 Dec 2016

Available online: 03 Jan 2017

Keywords:

Glass flake

Epoxy Vinyl Ester

Morphology

Rheology

Aspect Ratio

Sonication

ABSTRACT

In the present work, attempts were made to investigate the reinforcement and treatment effect of glass flake (GF) on morphological and rheological behavior of GF/epoxy vinyl ester composites. GF was incorporated into epoxy vinyl ester resin by sonication and mechanical agitation. Rheological and morphological properties were studied as a function of flakes treatment and size distributions. The dispersion morphology, agglomeration degree and homogeneity of additives were analyzed by scanning electron microscopy (SEM) and optical microscopy. The effects of mixing method, surface treatment, and particle size distribution on rheological properties of composites were investigated with a modular compact rheometer. The results demonstrated that the mechanical agitation decreases GF aspect ratio more than sonication. SEM fractography confirms that finer particles improve toughness properties of the composites in comparison with larger ones. GF with larger circular diameter and length is more sensitive to shear than the smaller one. Rheological investigations showed that surface treatment improves the interaction between the polymer matrix and GF. Based on the results, it is indicated that the finer the GF, the better rheological properties will be displayed. Prog. Color Colorants Coat. 10 (2017), 31-41 © Institute for Color Science and Technology.

1. Introduction

Over the years, polymeric materials have developed due to their good barrier properties [1]. Epoxy vinyl ester resins are the most important thermosets, widely used as adhesives, coatings, and composite materials

[2-4]. In order to enhance the barrier protection, magnetic recording and physical properties such as modulus, thermal expansion, thermal and electrical conductivity of these resins, reinforced fillers have been incorporated [5, 6].

*Corresponding author: m.ehsani@ippi.ac.ir

In comparison with many other flake-like fillers, glass flakes (GF) gained popularity because they have a large aspect ratio and unlike other similar planar fillers, can be made in a variety of thickness to diameter ratios and are not stepped, they are totally impervious to moisture vapor and consistent in composition [7]. Moreover GF has appropriate mechanical properties and is generally considered a simple dust hazard or non-hazardous, particularly when compared with fibers and some other pigments. Other barrier pigments commonly used are opaque, often strongly colored and have poor aspect ratios. Therefore, GF can offer significant advantages in engineering thermo-polymeric coatings due to its unique and special properties [8]. GF containing coatings are being investigated in relation to metal protection in highly corrosive media because they are expected to greatly hinder the water transport through the polymeric matrix [9-12]. GF reinforced products also display good resistance against weathering and chemical attack. The reinforcement effect of glass flake strongly depends on the interfacial adhesion between the glass flake and the surrounding polymer matrix. Besides, the adhesion properties of the GF containing coatings can be enhanced by incorporating silane based adhesion promoter in the coating [13]. The bonding of fillers into the resin is a highly important feature in obtaining performance both from a permeation resistance view and mechanical performance. Silanes have been used for many years in the glass fiber industry to improve bonding and in consequence performance having dual functionality being capable of interacting with the GFs and crosslinking into the matrix to form continuous bonding [1, 14-16]. Generally, the performance of thermoset resins is improved by adding a silane coupling agent just before flake loading. Furthermore, size and thickness of flakes are both remarkable factors on obtaining high performance composites. The quantity and particle size distribution of GF are important, too. A further consideration is whether or not coupling agents are used to provide better adhesion of the GF to the binder and in the case of coatings, the substrate. Interfacial properties play an essential role in determining the mechanical behavior of polymer composites. The degree of interfacial bonding between the reinforcement phase and the surrounding matrix can also alter the rheological and mixing properties of the final composites [13]. Both the filler concentration and interactions alter the rheological and processing characteristics of the resin [17]. The incorporation state of glass flake into the resin

can introduce significant performance advantages. The problems in compounding approach are the reduction of aspect ratio of the fibers and flakes. This can be partially solved by surface coating of particulates in order to minimize the required mixing time, incorporating the particulates into polymeric liquids at the highest possible temperature to reduce μ , impinging mixers or other types of equipment where mechanical or high shear breaking action is limited [18].

The ultimate properties of composites are strongly dependent on the particle size, degree of dispersion, and the interactions occurred between the interface of particles and polymer matrix. Homogeneous dispersion of inorganic parts in the organic matrix dramatically becomes feasible, owing to the lack of affinity between the interfacial contact area of inorganic fillers and organic polymers. Therefore, a proper remedial measure for this flaw is crucial to develop new nanocomposites. Rheological measurement is one of the most effective methods to analyze composites. Up to now, most of the reports focus on the study of thermoplastics and a few studies reported the properties of thermosetting composite [13-16].

To the best of our knowledge, few papers have been published on the influence of concentration, particle size distribution, adhesion promoter, incorporation, and aspect ratios of GF on the performance and rheological properties of composites which is so important factors on enhancement of adhesion to substrate and longer barrier spots of GF-filled coatings result in a great improvement of corrosion resistance performance compared to pristine epoxy coatings [13-16].

It is possible to alter the incorporation of GF by employing various mixing methods. Two types of GFs (micro and milled) with different aspect ratios were selected in this study. Effect of mixing method on morphological behavior of GF reinforced epoxy vinyl ester composites was investigated. The effect of surface treatment, mixing method and particle size distribution on rheological properties is also considered in this research.

2. Experimental

2.1. Material

Two types of GF ingredients were used for this research namely GF003 and GF300M, provided by GF Co. (England). General properties of GFs are shown in Table 1. Bisphenol-A epoxy vinyl ester resin with

viscosity of 450 cps at 25 °C was supplied by Swancor Company (Taiwan). The curing agents for this resin were 1.5% cobalt naphthenate, 0.1% dimethyl aniline, and 2% methyl ethyl ketone peroxide in diisobutyl phthalate (LPT) provided by AkzoNoble. Around 0.25% benzoin was used as a degassing agent. The composite samples with different compositions were prepared using three forms of GF; untreated GF003 (GF-003un), treated GF300M (GF-300M), and untreated GF300M (GF-300M un). GF-300M was treated with 3-aminopropyl triethoxysilane by the company and was used without further treatment.

2.2. Sample preparation

A specified amount of GF (15 wt %) was dispersed in epoxy vinyl ester resin using two combining methods: mechanical mixer with 500 rpm and sonication at room temperature. Each method was applied at different

times referred to as M1 to M4. The mixing mechanisms are listed in Table 2. Subsequent to mixing, 2.0% of the curing agent (LPT) was added followed by a thorough mixing for about 5 minute. All four methods have been used for each types of GF. Notation of samples is selected based on mixing method. For instance, GF003unm2 correspond to dispersion of untreated GF003 by using M2 mixing method.

2.3. Particle size measurement

The optical homogeneity of filler dispersions in epoxy resin was examined by an Olympus BHZZ-UMA optical microscope.

In order to determine the GF aspect ratios, a semi automated SA-CP3 image analyzer was used. With the purpose of suspend GF in acetone, GFs were extracted from resin via the solution extraction method.

Table 1: Physical properties of three types of micro GFs.

Material	Properties				
	Treatment	Particle size distribution (µm)		Thickness (mm)	Density (g/cm ³)
GF-300M	3-aminopropyl triethoxy silane	1000-300µm 300-50µm <50µm	10% or less 65% or more 25% or less	2.3 - 3.3<m	2.60
GF-300M un	untreated	1000-300µm 300-50µm <50µm	10% or less 65% or more 25% or less	2.3 - 3.3<m	2.60
GF-003 un	untreated	>150µm 150-50µm <50µm	2% or less 10% or less 88% or more	2.3 - 3.3<m	2.60

Table 2: Different dispersion procedures.

Mixing method code	Time of mixing (min)	
	Mechanical agitation (500 rpm)	Sonication
M1	10	15
M2	10	30
M3	20	15
M4	30	15

2.4. Scanning electron fractography analysis

In order to examine the surface characteristics of modified coatings, all the experimentally fractured specimens were metallized with gold using a sputter coater to provide surface conduction and observed with a scanning electron microscope (SEM; Cambridge Stereoscan, model S-360, Germany).

2.5. Rheological properties

Rheological properties such as dynamic viscoelastic and steady state viscosity measurements were performed on samples with a modular compact rheometer (MCR300). Due to the low viscosity of prepared systems, experiments were carried out with a co-axial cylindrical geometry having a gap of 1 mm according to the standard concentric cylinder geometry of CC27 presented by PaarPhysica. Angular frequencies under oscillatory shear deformations were set at 0.5 (1/s) and stress amplitude between 1 Pa and 1000 Pa was applied. A humidity chamber was designed and placed to minimize water evaporation during the measurements.

3. Results and discussion

3.1. Effect of mixing method on morphological behavior of composites

Although previous researches, which only had used optical microscopy as an assessing tool, had indicated that dispersing of GF in vinyl ester matrix was not complicated, further investigations revealed that the dispersion was not enough, and GF platelets stuck together [19]. The reinforcement effect of polymer composites strongly depends on the filler's structural parameters, such as shape, aspect ratio, modulus, volume fraction, interfacial adhesion, surface characteristics and orientation [2–6]. The improved reinforcement efficiency is observed using fillers with higher aspect ratio.

On the other hand, GF particles are very sensitive to shear. Mixing can break GF platelets and then decrease aspect ratio distribution or anisotropy. Both of these events diminish the barrier properties of composite which plays the most important role for this filler for using in the coatings.

The better interaction of treated GF and surrounding matrix can also reduce damaging effect of mixing method and provide superior dispersion.

Particle size analysis is used for evaluating the reduction of flake's aspect ratio during dispersion in the resin and suffering different tension. Figure 1(a) to 1(c) show cumulative percent (%) of GF aspect ratio vs. aspect ratio for three types of GFs after dispersion in resin via four different mixing methods, and separation of them by the solution extraction approach. Particle size distribution of the extracted particles was analyzed by image analyzer software. An example of analyzed images is illustrated in Figure 2.

As it can be seen in Figure 1, the applied mixing methods have little destructive effect on all types of GFs. Although the aspect ratio of different GFs more or less is similar, it seems that the damages are more evident for the untreated and larger ones. On the other hand, the surface treatment of GF particles can reduce destructions of flakes due to better dispersion and reduce stickiness which was attributed to the interfacial interaction of hydroxyl and ester groups between the fillers and the matrix. Figure 1 shows that aspect ratio of GF is more damaged with the mechanical agitation (M4) in comparison with the ultrasonic mixing method.

Table 3 indicates the percentage of variation in aspect ratio of mixtures stirred with four different dispersion procedures. As it can be observed in Table 3, aspect ratio of GF does not show a remarkable change during the sonication process while mechanical agitation has a stronger effect on smashing all GF types which represent more damaging consequence of mechanical mixing in comparison with sonication for dispersion of these flakes. On the other hand, the untreated GF with a larger circular diameter and length (GF300) was more sensitive to shear than GF with smaller particle size distribution (GF003). This was attributed to the larger breakable surface area in GF300M which make it more fragile against energetic waves and shear tensions.

Therefore, surface treatment of flakes can confine the detrimental effect of mechanical or high shear mixing methods. Generally, two mechanisms have been found in breaking of fragile fillers: mechanical forces and abrasion of particles together. However, it is not possible to determine which of these mechanisms can be more predominant in breaking the particles. Obviously, surface treatment due to increment of filler and matrix interaction can moderate harmful effect of both mechanisms.

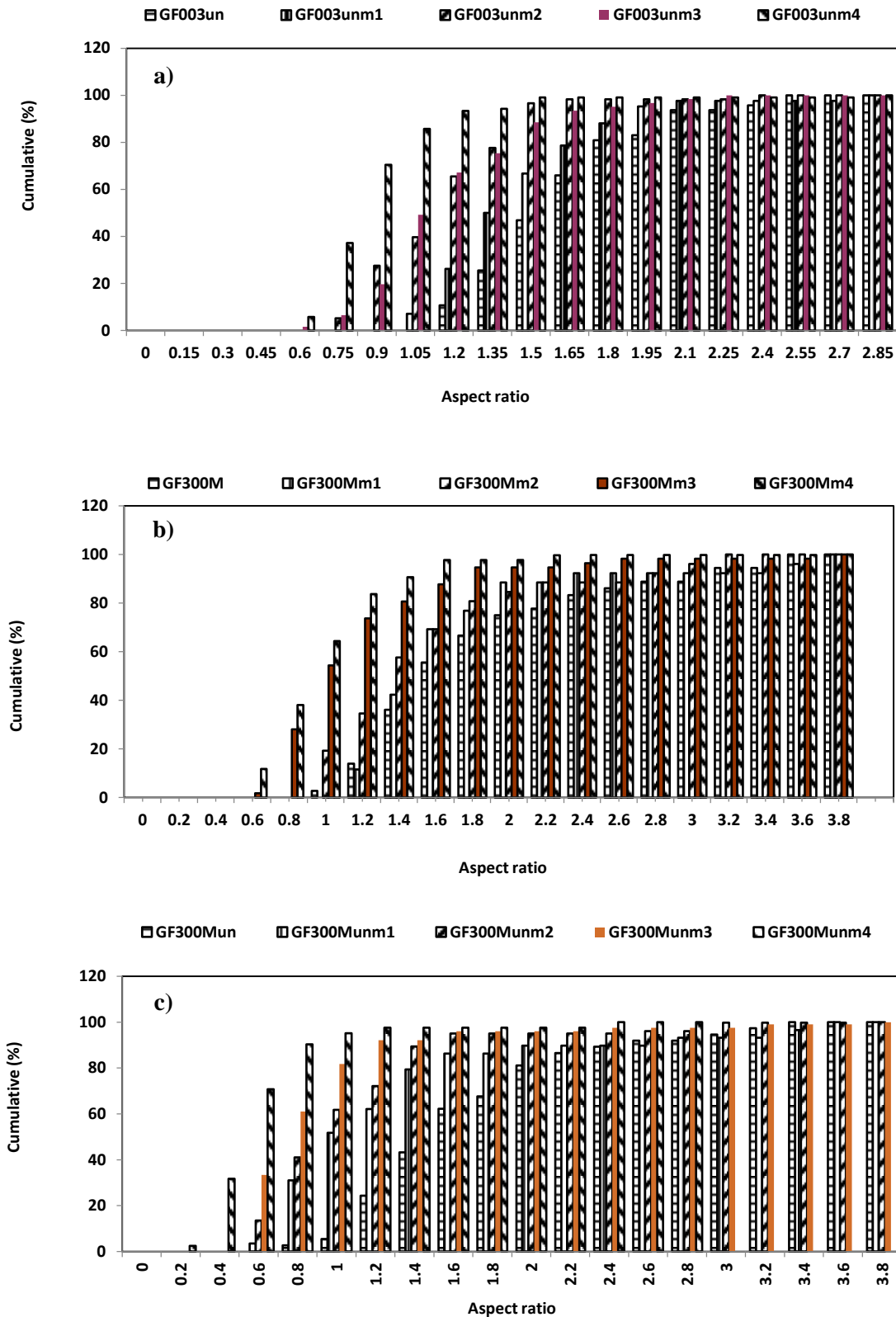


Figure1: Particle size analysis of GF particles after stirrings via four mixing methods. Cumulative percent aspect ratio via aspect ratio for (a) untreated finer GFs (GF003), (b) treated larger glass flakes (GF300M) and (c) untreated larger GFs (GF300Mun).

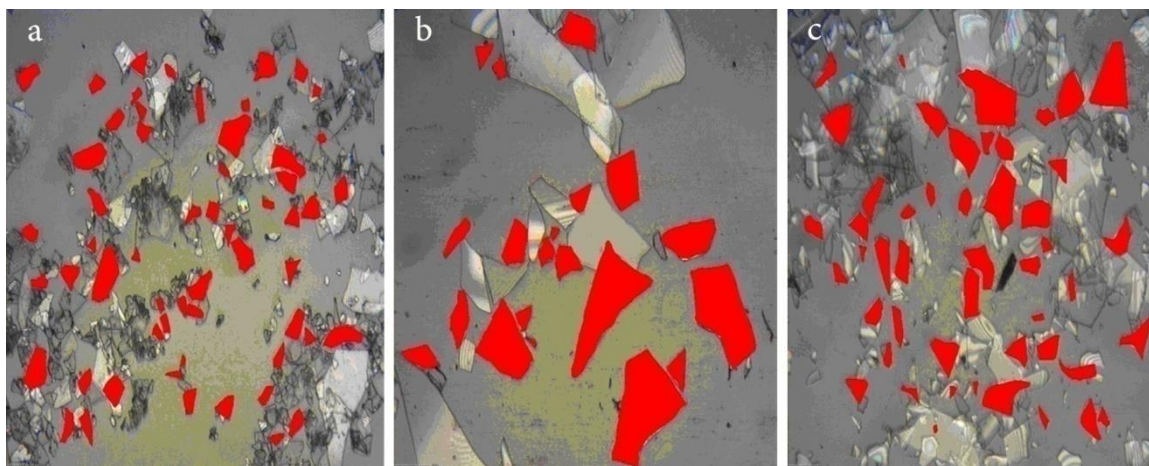


Figure 2: An example of analyzed images (taking image via optical microscopy by magnification of 270X and 135X for finer and bigger platelets, respectively): (a) untreated finer particles (GF003), (b) Treated bigger particles (GF300M) and (c) Untreated bigger particles (GF300Mun).

Table 3: Percentage of change in aspect ratio of different GF-filled epoxy vinyl ester composites stirred in four different dispersion procedures.

Mixing method code	Percentage of change in Aspect Ratio		
	GF003un	GF300M	GF300Mun
M1	0.06*	0.04	1
M2	1.2	1	1.5
M3	1.6	1	1.5
M4	2.01	1.01	2.7

Percentage of change *: $\rho(1) - \rho(0)/\rho(0) \times 100$
 Where $\rho(1)$ and $\rho(0)$ are aspect ratio of stirred and primary glass flake, respectively.

3.2. Effect of mixing method on rheological properties of composites:

The effect of GF on the rheological properties of prepared composites by various mixing methods and times were probed using rheometer in shear rate range of 0.01-1000 (1/S).

As mentioned before, level of dispersion and flake size distribution have altered through four different mixing procedures. Change in shear history of mixtures is investigated by rheological experiments. This technique allows investigating the relaxation caused by the Brownian motion of the main chains due to the transitions occurred during the levelling process. It is likely that this motion can be affected by the type of mixing method and also the presence of GF because of the interactions in the interface layer surrounding the

flakes [13-16]. The flow curves (apparent viscosity, μ , vs. shear rate, γ') in low amplitude were fitted to the power law expression:

$$\mu = A \gamma'^{(n)} \tag{1}$$

Where μ is the apparent viscosity, A is the specific pre-exponential factor, γ' is the shear rate and n is the shear thinning exponent. Figure 3 represents the flow curves of GF300-filled samples. Variation of absolute value of viscosity vs. shear rate for all the samples suggests an almost shear thinning behavior at different shear rates. In order to determine A and n , a plot of $\log(\mu)$ vs. $\log(\gamma')$ was prepared and fitted to a straight line. The shear thinning exponent (n) is the proposed semi-quantitative measure of micro-dispersion of the sample.

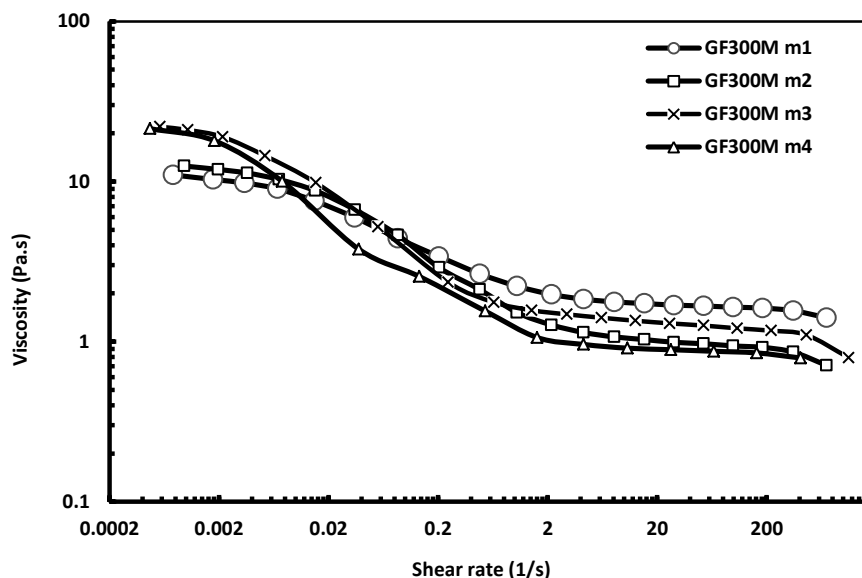


Figure 3: Viscosity of GF300-filled composites as a function of shear rate in different mixing methods.

The respective values of the exponent n for M1 to M4 are -0.29, -0.40, -0.41 and -0.42, respectively. Apparently, the shear thinning exponent allows a quantitative discrimination between the samples. On the other hand, the samples which were stirred by M4 showed the highest amount of shear thinning exponent while the samples with more mixing time showed higher zero shear viscosity, which confirmed the yield phenomena in the GF composites. According to the results, shear thinning behavior is observed in the system by adding GFs. Since levelling is raised in low shear rates, and rheological properties oscillations are not suitable in this state, higher rheological index leads to better levelling. This issue represents the definite preference of M1, M3 and M4 mixing methods compared to M2 method. Definitely, the increase in n index in M3 and M4 methods is obtained by breakage and defects of most of the flakes which examined in the previous parts. Although increasing of isotropy as a result of particle breakage is desirable, the consequences of this phenomena is the loss of matrix interactions and the anti-corrosion performance of these systems. The M2 method is the best method of mixing in this system. Even though, the degree of dispersion has only remained a limited effect on the anisotropy, flake breaking decreases anisotropy and

then diminishes the interaction between GF and matrix. Thus, mixing method M2 is chosen as the best dispersion procedure.

3.3. The effect of surface treatment on rheological properties of composites

Viscosities of the resin suspensions with different modified and unmodified GFs are comparatively studied at different rates as shown in Figure 4. The results show that the epoxy resin alone is almost Newtonian with the complex viscosity being independent of the angular frequency [13-16]. As the dispersive medium is almost Newtonian fluid, most of the elastic and strain-rate dependent behaviors in the GF composites suspensions are driven from the addition of the GF and/or their degree of dispersion and orientation [18]. According to the viscosity results, both composites showed a shear thinning behavior that confirms the micro-structure formation.

The presence of silane groups on the GFs surface could introduce an additional "soft layer" preventing the agglomeration of GFs and subsequently improving the dispersion quality [13-16]. It might be deduced from Figure 4 that the modified GF composite showed higher zero shear viscosity compared to untreated GFs containing composite due to further

interfacial bonding between the GFs and the epoxy vinyl ester as a result of surface modification of GF. The reduced filler–filler interaction was manifested by the mono-dispersion of the GFs [13-16].

Clearly, the shear thinning exponent of treated and untreated GF-filled samples are the same. Shear thinning exponent is truly dependent on the meso-scale composite structure formed by the (partially) exfoliated platelets [18]. Therefore, treatment of GF improves the interaction between the polymer matrix and GF.

3.4. Effect of particle size distribution on rheological properties of composites

GF aspect ratio determines to which extend GF sheets interact with each other to build an inter-connecting network known as percolation [13-16]. However, in practice, the dispersion quality plays an important role in corrosion properties of the composite [14].

The results of storage modulus (G') of epoxy/GF suspension are presented in Figure 5. Storage modulus is measured by steady state viscoelastic tests in linear viscoelastic region in which not only deformations do not create any changes in molecule's structures but also release them from primal equilibrium state and entanglements.

In order to represent the effect of size distribution

of flakes on rheological behavior, two different unmodified GFs were selected; therefore there is not any further interaction between resin and filler. As it is illustrated in Figure 5, it can be concluded that an addition of finer GF forms a more stable, resistance and smaller structures which dropped off and decomposed in higher stress.

Higher surface area between finer GF and matrix leads to formation of a network-like structure while larger particles formed unstable network in which poor interaction between untreated GF300 particles and vinyl ester in the composites can be observed. Also, the larger amount of initial modulus of GF300 un-filled composites indicates that larger structures are formed by using larger flakes.

3.5. Fractography

SEM was used to observe the dispersion of GF, filler–matrix interface and interaction on the fractured surfaces of the cured composites. The enhancement of distribution by treatment of flakes has positive effect on general dispersion of GF in the matrix [19-21]. SEM micrographs of composites with 15 wt % (of different GFs mixed by M2 method) are depicted in Figure 6.

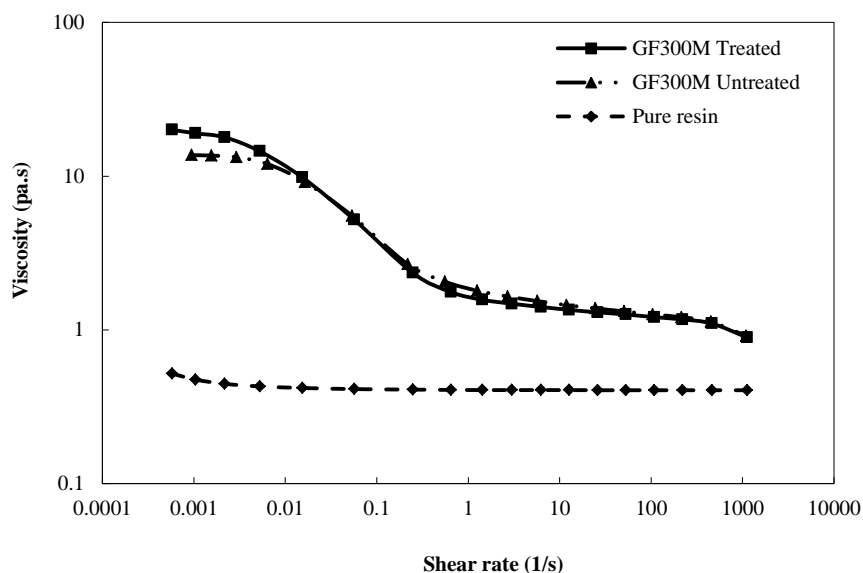


Figure 4: Viscosity of pristine resin and GF filled composites as a function of shear rate in different mixing methods.

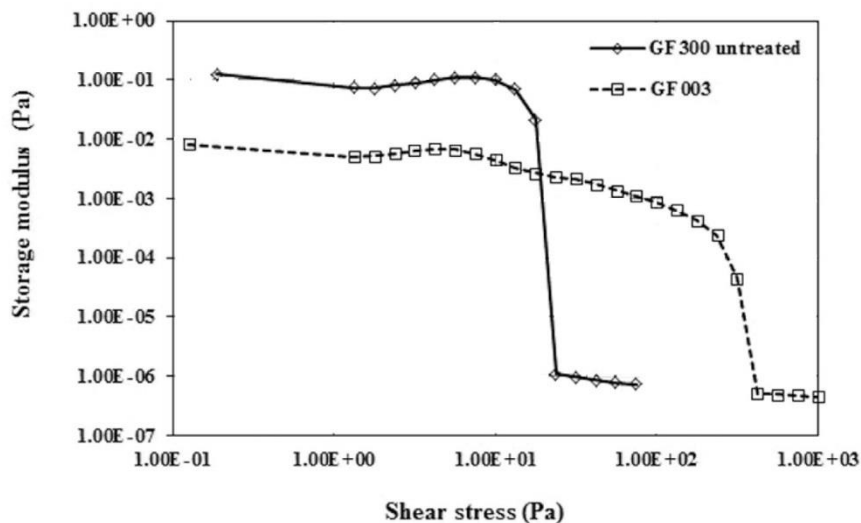


Figure 5: Storage modulus vs. shear stress of GF filled composites.

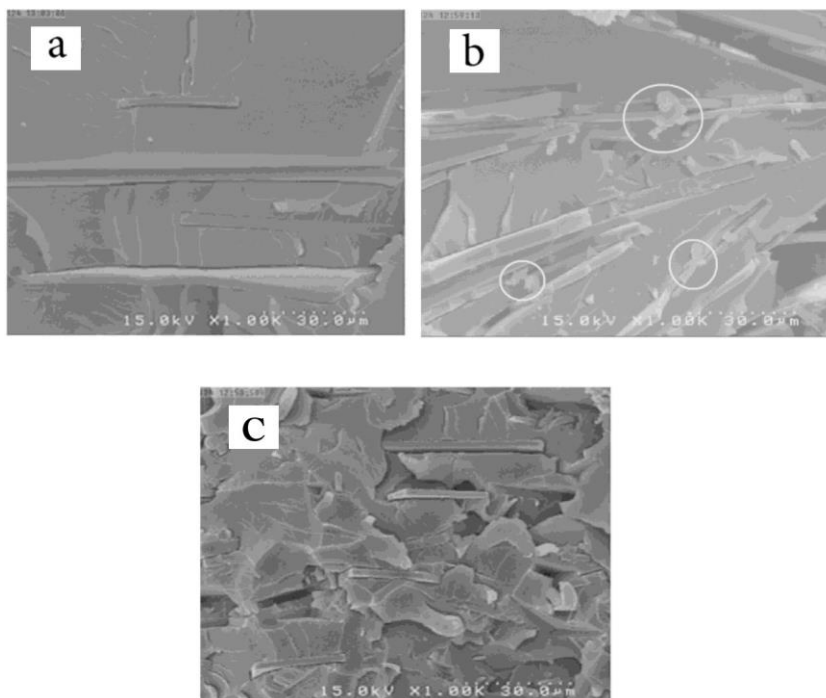


Figure 6: SEM images of fracture surface of epoxy vinyl ester composites prepared by M2 mixing method. (a) GF-300M treated by amino silanes, (b) untreated GF-300M and (c) untreated GF-003.

As it is shown in Figure 6, the state of dispersion was approximately different in the samples and it was almost uniform. In addition, a suitable adhesion between GF and resin matrix was attained using treated GF300M. A considerable aggregation of particles is

observed when untreated GF300M particles is used as representative of the presence of large voids around the particle aggregates. Some aggregated flakes depicted in Figure 6b which are assigned by white circles.

The fracture surface of larger GF filled samples

(GF300M) reveals a brittle behavior characterized by large smooth area which corresponds to the low growth of crack-like defects while finer particle indicates a rough fracture surface as a result of increasing the surface area. therefore, finer filled GF samples are tougher than larger ones. This result is confirmed with mechanical tests which will be studied in future work of this team.

4. Conclusions

It was demonstrated that GF mixing can lead to breaking of particles and a decrease in average aspect ratio. The shear thinning exponent (n) is a semi-quantitative measure of the degree of anisotropy. Two mechanisms were found in the breaking process: the mechanical agitation and abrasion of particles together. It was found that more failure of particle is caused by using mechanical agitation mixing method.

On the other hand, it is shown that in order to minimize the mixing time, surface treatment of particles can limit mechanical or high shear breaking effect. GF with a larger circular diameter and length

was more sensitive to shear than smaller particles.

Rheological properties of resin were altered by incorporating GFs. Studies showed that decreasing of average aspect ratio declines shear thinning of samples. Treatment of GF improves interaction of polymer matrix and GFs. Furthermore, among untreated GF-filled samples, the composites containing finer GF showed improved rheological properties.

Additionally, the properties strongly depend on the flow-induced morphology and the yield phenomena or orientation. The rheological experiments indicated that the power law index (n) was decreased in the sample with larger mixing time while this sample showed higher zero shear viscosity, which confirmed that filler-matrix network formed as a result of filler breakage in the mixing process and also became more elastic by using finer flakes in the composites.

SEM fractography showed that the enhancement of distribution by treatment of the flakes has a positive effect on general dispersion of GF in the matrix. Also, the suitable adhesion between GF and resin matrix has been attained when treated GF300M is used.

5. References

1. M. Mohammadi, A. A. Yousefi and M. Ehsani, Characterizing films of polyethylene blends: An application of colorimetric parameters measurements, *Prog. Color Colorants Coat.*, 8(2015), 219-235.
2. S. Zhang, J. I. Xie, and L. j. Deng, Research progress of modification of epoxy resin, *China. Adhes.*, 14(2005), 39-45.
3. A. Nazareth da Silva, S. Teixeira, A. Widal, and F. Coutinho, Mechanical properties of polymer composites based on commercial epoxy vinyl ester resin and glass fiber, *Polym.test.*, 20 (2001), 895-899.
4. L. Rosu and D. Rosu, Vinyl ester matrix resins for advanced materials, *J. Optoelectron. Adv. M.*, 10 (2008), 3377-3381.
5. J. González-Guzmán, J. Santana, S. González, and R. Souto, Resistance of metallic substrates protected by an organic coating containing GFs, *Prog. Org. Coat.*, 68(2010), 240-243.
6. Z. Ranjbar, Sh. Ashhari, A. Jannesari and Sh. Montazeri, Effects of Nano Silica on the Anticorrosive Properties of Epoxy Coatings, *Prog. Color Colorants Coat.*, 6(2013), 119-128
7. M. Nematollahi, M. Heidarian, M. Peikari, S. Kassiriha, N. Arianpouya, and M. Esmailpour, Comparison between the effect of nanoGF and montmorillonite organoclay on corrosion performance of epoxy coating, *Corros.Sci.*, 52 (2010), 1809-1817.
8. S. Sathiyarayanan, S. Syed Azim, and G. Venkatachari, Corrosion protection coating containing polyaniline GF composite for steel, *Electrochim. Acta.*, 53(2008), 2087-2094.
9. A. Ghadami, M. Ehsani, and H. A. Khonakdar, Vinyl ester/GF nanocomposites: An overview of chemical and physical properties, *J.Compos. Mater.*, 21 (2013), 313-325.
10. M. Ehsani, H. Khonakdar, and A. Ghadami, Assessment of morphological, thermal, and viscoelastic properties of epoxy vinyl ester coating composites: role of GF and mixing method, *Prog. Org. Coat.*, 76 (2013), 238-243.
11. S. Radhakrishnan, N. Sonawane, and C. Siju, Epoxy powder coatings containing polyaniline for enhanced corrosion protection, *Prog. Org. Coat.*, 64(2009), 383-386.
12. L. Min, W. Xiujuan, L. Baocheng, and Y. Lixin, Development of Epoxy GF Heavy-Duty Anticorrosive Coatings Used in Marine Environment, *Paint. Coat. Indus.*, 4 (2010), 17-28.
13. M. Ghaffari, R. Naderi, and M. Ehsani, Effect of silane as surface modifier and coupling agent on rheological and protective performance of epoxy/nano-glassflake coating systems, *Iran. Polym. J.*, 23(2014), 559-567.

14. M. Ghaffari, M. Ehsani, and H. A. Khonakdar, Morphology, rheological and protective properties of epoxy/nano-glassflake systems, *Prog. Org. Coat.*, 77(2014), 124-130.
15. M. Ghaffari, M. Ehsani, H. A. Khonakdar, G. Van Assche, and H. Terryn, The kinetic analysis of isothermal curing reaction of an epoxy resin-glassflake nanocomposite, *Thermochim. Acta.*, 549 (2012), 81-86.
16. M. Ghaffari, M. Ehsani, H. A. Khonakdar, G. Van Assche, and H. Terryn, Evaluation of curing kinetic parameters of an epoxy/polyaminoamide/nano-glassflake system by non-isothermal differential scanning calorimetry, *Thermochim. Acta.*, 533(2012), 10-15.
17. D. W. Litchfield and D. G. Baird, The rheology of high aspect ratio nano-particle filled liquids, *Rheol. Rev.*, <http://www.bsr.org.uk>, 2006, 1-60.
18. T. Maity, B. Samanta, S. Dalai, and A. Banthia, Curing study of epoxy resin by new aromatic amine functional curing agents along with mechanical and thermal evaluation, *Mat. Sci. Eng. A-Struct.*, 464(2007), 38-46.
19. A. Omrani, L. C. Simon, and A. A. Rostami, The effects of alumina nanoparticle on the properties of an epoxy resin system, *Mater. Chem. Phys.*, 114 (2009), 145-150.
20. F. Hussain, M. Hojjati, M. Okamoto, and R. E. Gorga, Review article: polymer-matrix nanocomposites, processing, manufacturing, and application: an overview, *J. Compos. Mater.*, 40 (2006), 1511-1575.
21. S. Pavlidou and C. Papaspyrides, A review on polymer-layered silicate nanocomposites, *Prog. Polym. Sci.*, 33 (2008), 1119-1198.

How to cite this article:

A. Ghadami, M. Ehsani, H. Haddadi, B. Kaffashi, Effect of Micro Glass Flake on Morphological and Rheological Behavior of Epoxy Vinyl Ester Composite Coatings *Prog. Color Colorants Coat.*, 10 (2017), 31-41.





اثر میکرو پرک شیشه بر رفتار شکل شناسی و رئولوژیکی در پوشش‌های کامپوزیتی بر پایه اپوکسی وینیل استر

اعظم قدمی^۱، مرتضی احسانی^{۲*}، هانیه حدادی^۴، بابک کفاشی^۵

^۱ استادیار، گروه مهندسی شیمی، دانشکده فنی و مهندسی، واحد تهران مرکز، دانشگاه آزاد اسلامی، تهران، ایران، صندوق پستی: ۳۴۳۵۳-۱۷۱۱۷.

^۲ استاد، گروه مهندسی پلیمر، دانشکده فنی و مهندسی، واحد تهران جنوب، دانشگاه آزاد اسلامی، تهران، ایران، صندوق پستی: ۴۴۳۵-۱۱۳۶۵.

^۳ استاد، گروه فرآیند، پژوهشگاه پلیمر و پتروشیمی ایران، تهران، ایران، صندوق پستی: ۱۱۵-۱۴۹۶۵.

^۴ کارشناسی ارشد، گروه مهندسی پلیمر، دانشکده فنی و مهندسی، دانشگاه تهران، ایران، کد پستی: ۴۵۶۳-۱۱۳۶۵.

^۵ دانشیار، گروه مهندسی پلیمر، دانشکده فنی و مهندسی، دانشگاه تهران، ایران، کد پستی: ۴۵۶۳-۱۱۳۶۵.

چکیده

در تحقیق حاضر، اثر تقویت‌کنندگی و اصلاح سطح پرک شیشه (GF) بر خواص رئولوژیکی و شکل شناسی کامپوزیت‌های پرک شیشه/اپوکسی وینیل استر مورد بررسی قرار گرفته است. اختلاط پرک شیشه در رزین اپوکسی وینیل استر با استفاده از دو روش فراصوت و اختلاط مکانیکی انجام شد. چگونگی بخش، همگن بودن و میزان کلوخه شدن افزودنی به وسیله میکروسکوپ الکترونی پوشی و میکروسکوپ نوری مورد تحلیل قرار گرفت. همچنین اثر روش اختلاط، اصلاح سطح و توزیع اندازه ذرات بر خواص رئولوژیکی کامپوزیت‌ها با استفاده از رئومتر چرخشی فشاری بررسی گردید. نتایج نشان داد که استفاده از روش اختلاط مکانیکی موجب کاهش بیشتر نسبت منظر GF نسبت به روش فراصوت می‌گردد. مشاهدات میکروسکوپ الکترونی، افزایش خواص چقرمگی کامپوزیت‌ها را در صورت استفاده از پرک‌ها نازک‌تر نسبت به نوع ضخیم‌تر آن تأیید می‌کند. GF با طول و قطر دایره محاط بزرگتر حساسیت بیشتری در برابر برش نشان دادند. بررسی‌های رئولوژیکی بیانگر اصلاح سطح افزایش برهمکنش پلیمری ماتریس و GF در نتیجه می‌باشد. با توجه به نتایج پرک شیشه نازک‌تر خواص رئولوژیکی بهتری را نشان داده است.

اطلاعات مقاله

تاریخچه مقاله:

تاریخ دریافت: ۱۰ شهریور ۱۳۹۵

تاریخ دریافت آخرین اصلاحات: ۲۲ آذر ۱۳۹۵

تاریخ پذیرش: ۳۰ آذر ۱۳۹۵

تاریخ در دسترس به صورت الکترونیکی: ۱۴

دی ۱۳۹۵

واژه‌های کلیدی:

پرک شیشه

اپوکسی وینیل استر

ریخت شناسی

رئولوژی

نسبت منظر

فراصوت