

Addition of Intrathecal Magnesium Sulfate to Bupivacaine for Spinal Anesthesia in Cesarean Section

Nadia Banihashem¹; Bahman Hasannasab^{1,*}; Ali Esmaeili¹; Borhaneh Hasannasab²

¹Department of Anesthesiology, Babol University of Medical Sciences, Babol, IR Iran

²Department of Pharmacology, Babol University of Medical Sciences, Babol, IR Iran

*Corresponding author: Bahman Hasannasab, Department of Anesthesiology, Babol University of Medical Sciences, Babol, IR Iran. Tel: +98-911113632, Fax: +98-112238296, E-mail: bahmanh2002@yahoo.com

Received: August 20, 2014; Revised: October 12, 2014; Accepted: November 2, 2014

Background: Spinal anesthesia is widely used for caesarean section. Addition of intrathecal magnesium sulfate to local anesthetics seems to improve the quality of block and prolong the duration of analgesia.

Objectives: The present study was designed to examine whether addition of intrathecal magnesium sulfate enhances the analgesic efficacy of intrathecal bupivacaine in patients undergoing cesarean section.

Patients and Methods: We conducted a randomized, prospective, double-blind, case-control, clinical trial. Eighty patients were scheduled for cesarean section under spinal anesthesia. The patients were randomly allocated to receive either 10 mg of hyperbaric bupivacaine 0.5% (control group) or 10 mg of hyperbaric bupivacaine 0.5% plus 50 mg magnesium sulfate (case group) intrathecally. Hemodynamic variability, onset and duration of block and duration of analgesia were evaluated.

Results: The onset of sensory blockade was delayed in case group compared with control group, and this was statistically significant. The onset of motor blockade had no difference in both groups. The duration of motor blockade was similar. Post-operative analgesia was longer in magnesium sulfate group but the difference was not meaningful. The intraoperative hemodynamic variability showed no significant differences between groups.

Conclusions: This study showed that the addition of intrathecal magnesium sulfate to bupivacaine is not desirable in patients undergoing cesarean section due to the delay in the onset of sensory blockade and the lack of significant effects of magnesium on post-operative pain.

Keywords: Spinal Anesthesia; Bupivacaine; Magnesium Sulfate; Cesarean Section

1. Background

Regional anesthesia is a safe and inexpensive technique which is widely used in cesarean section. It reduces the risk of airway complications and avoids hemodynamic changes associated with laryngoscopy and intubation (1, 2). Recently, application of intrathecal adjuvants has gained popularity with the aim of prolonging the duration of block, better success rate and patient satisfaction (1-4). Opioids such as sufentanil are commonly used as additives to local anesthetics to prolong the duration and intensify the effects of subarachnoid block (2). However significant side effects of opioids such as pruritus, urinary retention, respiratory depression, hemodynamic instability, occasionally severe nausea and vomiting may limit their use (1-3).

It has been shown that the duration of postoperative analgesia was prolonged when magnesium is given as an adjunct for peripheral nerve blocks (5). A few clinical trials have examined the effect of adding intrathecal MgSO₄ to anesthetic agents such as bupivacaine (6-8), yet the mechanisms of action are not clear. Anti-nociceptive effects of Mg are probably due to regulation of calcium

influx into the cell and antagonisation of N-methyl D-aspartate (NMDA) receptors. In the human body, calcium channel blockers can increase the analgesic effects of opioids. The analgesic effect of magnesium is due to its effect on NMDA receptors. N-methyl D-aspartate receptor has negative modulatory sites for agents such as magnesium. Furthermore, it is coupled with ion channels such as K⁺ and Ca²⁺. Magnesium causes a voltage-dependent block on NMDA receptors (6-10).

2. Objectives

The present study was designed to examine whether addition of intrathecal magnesium sulfate would enhance the analgesic efficacy of intrathecal bupivacaine in patients undergoing cesarean section.

3. Patients and Methods

Eighty patients with American Society of Anesthesiologist (ASA) class I-II, between 18 and 35 years old, scheduled for cesarean section under spinal anesthesia, were

included in this prospective, randomized, double-blind clinical trial. After the ethic's committee approval, written informed consent was obtained from all patients preoperatively. Patients with a history of long-term steroid therapy, uncontrolled hypertension, neurologic or psychological disorders, body weight > 100 kg or height < 150 cm, spinal column surgery, chronic pain, opium addiction or consuming drugs that modify pain perception were excluded from the study.

After IV line preparation, 10 cc/kg lactated ringers solution was infused to all patients. They received no premedication and electrocardiogram (ECG). Peripheral oxygen saturation (SPO₂), and non-invasive arterial blood pressure (NIBP) were monitored upon arrival into the operating room and were recorded every five minutes until the end of the surgery and vital signs were registered every 15 minutes in the Post Anesthesia Care Unit (PACU). Patients were randomized by a computer-generated random number table into two groups of 40 patients:

Group I: Intrathecal administration of 10 mg of hyperbaric bupivacaine (Mylan, 20 mg/4 cc) and 0.5 mL of normal saline.

Group II: Intrathecal administration of 10 mg of hyperbaric bupivacaine and 50 mg of magnesium sulfate (Samen Daru, Iran).

Spinal anesthesia was given in the sitting position at the L4-L5 level through a midline approach using a 25-gauge Quincke spinal needle. After aspiration of 0.5 mL of cerebrospinal fluid, the local anesthetic solution was administered over 10-15 seconds. The patients were immediately returned to the supine position with left uterine displacement. To facilitate the double-blinding method, the medication was prepared and injected by an anesthesiologist who was not involved in the study. Thus, the patients and the observer were blinded to the study groups.

The sensory block level was assessed by a pin-prick test using a short bevel needle bilaterally along the mid-axillary line. The sensory block level was controlled every 30 seconds for 15 minutes, and then it was evaluated every five minutes until the end of the surgery. The onset was defined as the time between injection of drugs into the intrathecal space and the peak of sensory and motor block (highest dermatome level). The motor blockade was evaluated by the modified Bromage scale (0: patient can move their hip, knee and ankle; I: patient can move their knee and ankle; II: patient can move their ankle; III: patient can't move their hip, knee and ankle) (11). The time of reaching to Bromage III is considered as the onset of motor blockade. Complete motor block recovery was assumed when the modified Bromage score was 0.

Time for regression of four sensory blocks was recorded. Pain assessment was done using the visual analog pain scale (VAS) with scores ranging between 0 and 10 (0 = no pain, 10 = most severe pain) every one hour. If the postoperative VAS was higher than four, the patient was treated by meperidine 20 mg IV. The interval between intrathecal drug injection and meperidine injection was consid-

ered as the duration of analgesia. Patients were observed for possible neurologic deficits at the time of discharge from the hospital. Hypotension was defined as a systolic blood pressure decrease of more than 30% from baseline. Hypotension was treated promptly by increasing uterine displacement and fluid administration. If hypotension persisted despite these measures, 5 mg of ephedrine was injected.

Bradycardia (heart rate < 50 beats/minute) was treated by IV atropine 0.5 mg. Decreased oxygen saturation under 92% or respiratory rate less than 10 times/minute was considered as respiratory depression. Sample size calculation was based on a previous study. With a significance level of 95%, power of study 80%, α error of 0.05 and β error of 0.2, to show a 20% difference in the duration of analgesia, at least 35 patients per group were needed (12). We took 40 patients per group for our study to compensate for any drop outs. Onset time, four sensory block regression, and duration of analgesia were analyzed by the t-test. For categorical covariates (sex, nausea/vomiting, hypotension, bradycardia), the comparison was done using a chi-square test or Fisher's exact test. The significance level was defined as $P < 0.05$. Data were expressed as mean \pm SD.

4. Results

All patients completed the study, with 40 patients in the magnesium sulfate group (case group) and 40 in the control group. The patients' characteristics including age and weight were similar between the two groups (Table 1). The onset of sensory blockade in the bupivacaine group was more rapid than the magnesium sulfate group ($P = 0.01$), yet the onset of motor blockade was not different in both groups ($P = 0.56$) (Table 2). The duration of motor blockade was not significantly different between the two groups. Time for regression of four sensory blocks was similar ($P = 0.19$). Duration of analgesia was longer in the magnesium sulfate group yet this difference was not significant ($P = 0.07$) (Table 2).

Hemodynamic parameters such as heart rate and systolic blood pressure were similar in both groups (Figures 1 and 2). Three patients in the magnesium sulfate group and one patient in the control group experienced nausea and vomiting. Postoperative follow-up revealed uneventful recovery in all patients. No neurologic deficit was observed in any of the patients. Apgar score of babies (at one, five and ten minutes) was similar in both groups.

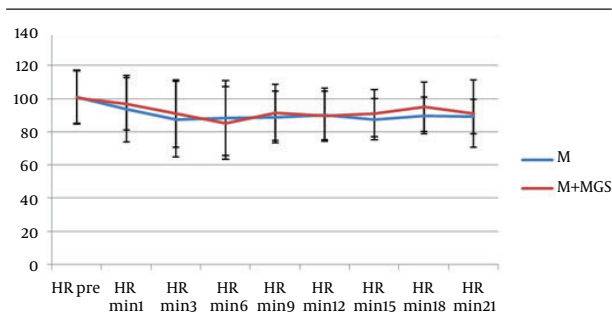
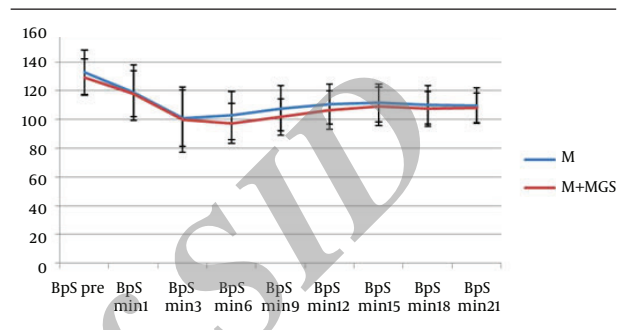
Table 1. The Characteristics of Patients in the Two Groups^a

Variable	Control Group	MgSo ₄ Group	P Value
Age, y	27.48 \pm 4.49	26.88 \pm 4.44	0.56
Weight, kg	78.13 \pm 10.89	83.10 \pm 11.91	0.08

^a Data are presented as mean \pm SD.

Table 2. Properties of Intraoperative and Postoperative Analgesia in the Two Groups^a

Variable	Control Group	MgSO ₄ Group	P Value
Onset time of sensory block, min	5.65 ± 0.92	6.60 ± 1.12	0.01
Onset time of motor block, min	8.57 ± 5.83	7.83 ± 5.67	0.56
Duration of 4 dermatome block regressions, min	61.33 ± 10.16	64.28 ± 10.07	0.19
Duration of motor block, min	56.75 ± 32.35	61.68 ± 39.37	0.54
Duration of analgesia, min	137.12 ± 9.95	160.87 ± 8.37	0.07

^a Data are presented as mean ± SD.**Figure 1.** Heart Rate Changes During the Operation ($P > 0.05$)**Figure 2.** Blood Pressure Changes During the Operation ($P > 0.05$)

5. Discussion

The main finding of this study was that in patients undergoing caesarean section under hyperbaric bupivacaine spinal anesthesia, the addition of 50 mg magnesium sulfate led to a significant delay in the onset of sensory blockade. Indeed, there was no significant difference in the duration of post-operative analgesia and characteristics of motor blockade in the two groups. The study showed that systemic administration of magnesium is associated with less analgesic requirement and less discomfort during the postoperative period (9, 13). Several experiments demonstrated analgesic effects of magnesium sulfate in neuraxial and peripheral block (5-7). It was observed that addition of magnesium sulfate to bupivacaine and fentanyl prolonged the period of anesthesia without additional side-effects (11). In some studies, it was observed that the visual analog scores, first analgesic requirement and total morphine requirement were significantly lower after intrathecal injection of magnesium sulfate (12, 14). In patients undergoing caesarean section under spinal anesthesia, the addition of intrathecal magnesium sulfate (100 mg) to morphine improved the quality and the duration of postoperative analgesia without increasing the incidence of adverse effects (15). Intrathecal magnesium was used for labor analgesia at the dose of 50 mg in addition to fentanyl; a significant prolongation in the duration of analgesia in the magnesium-fentanyl group compared with the fentanyl group was observed (16). Jabalameli and colleagues found that the duration of sensory and motor blockade was significantly prolonged by 75 mg or 100 mg magnesium sulfate compared with

50 mg magnesium sulfate (17). Unlugenc et al. showed that the addition of magnesium sulfate to bupivacaine did not shorten the onset time of sensory blockade or prolong the duration of spinal anesthesia (18). These differences may be due to the dose of intrathecal bupivacaine and magnesium or different surgical procedures.

In our study, we found that the onset of sensory blockade was delayed with the addition of intrathecal magnesium. This finding is similar to a previous study in which it was shown that the addition of intrathecal magnesium sulfate to bupivacaine and fentanyl anesthesia delayed the onset of the sensory and motor blockade (16). Ozalevli et al. observed a similar delay in onset of spinal anesthesia when adding intrathecal magnesium sulfate to fentanyl and isobaric bupivacaine (11). They suggested that the differences in pH and baricity of the solution containing magnesium sulfate contributed to the delayed onset (12, 16).

The optimal dose of intrathecal magnesium has not been reported previously. The dose of magnesium used in this study was based on data from the study of Buvanendran et al. where 50 mg of spinal magnesium sulfate potentiated fentanyl antinociception (16). We suggest further researches in the future, with different magnesium dosages and more patients, to determine the safest route and dosage. This study shows that the addition of intrathecal magnesium sulfate to bupivacaine is not desirable in patients undergoing caesarean section due to the delay in the onset of sensory blockade and the lack of significant effects of magnesium on post-operative pain.

Acknowledgements

The authors sincerely thank all their colleagues at the Rouhani Hospital for their support.

Authors' Contributions

Study concept and design: Nadia Banihashem and Bahman Hasannasab. Acquisition of data: Ali Esmaili. Analysis and interpretation of data: Nadia Banihashem and Bahman Hasannasab. Drafting of the manuscript: Ali Esmaili and Borhaneh Hasannasab. Critical revision of the manuscript for important intellectual content: Nadia Banihashem and Bahman Hasannasab. Statistical analysis: Nadia Banihashem and Bahman Hasannasab. Administrative, technical, and material support: Nadia Banihashem and Bahman Hasannasab. Study supervision: Nadia Banihashem and Bahman Hasannasab.

Funding/Support

Funding was provided by the Vice Chancellor for research of Babol University of Medical Sciences, Babol, Iran.

References

1. Roelants F. The use of neuraxial adjuvant drugs (neostigmine, clonidine) in obstetrics. *Curr Opin Anaesthesiol*. 2006;**19**(3):233-7.
2. Rasooli S, Parish M, Mahmoodpoor A, Moslemi F, Sanaie S. Effect of spinal low dose bupivacaine-sufentanyl for cesarean section in preeclamptic parturients on neonatal outcome. *Shiraz E Med J*. 2009;**10**(4):201-8.
3. Saxena AK, Arava SK. Current concepts in neuraxial administration of opioids and non-opioids: An overview and future perspectives. *Indian J Anaesth*. 2004;**48**(1):13-24.
4. Faiz SH, Rahimzadeh P, Imani F, Bakhtiari A. Intrathecal injection of magnesium sulfate: shivering prevention during cesarean section: a randomized, double-blinded, controlled study. *Korean J Anesthesiol*. 2013;**65**(4):293-8.
5. Lee AR, Yi HW, Chung IS, Ko JS, Ahn HJ, Gwak MS, et al. Magnesium added to bupivacaine prolongs the duration of analgesia after interscalene nerve block. *Can J Anaesth*. 2012;**59**(1):21-7.
6. Pascual-Ramirez J, Gil-Trujillo S, Alcantarilla C. Intrathecal magnesium as analgesic adjuvant for spinal anesthesia: a meta-analysis of randomized trials. *Minerva Anesthesiol*. 2013;**79**(6):667-78.
7. Faiz SH, Rahimzadeh P, Sakhaei M, Imani F, Derakhshan P. Anesthetic effects of adding intrathecal neostigmine or magnesium sulphate to bupivacaine in patients under lower extremities surgeries. *J Res Med Sci*. 2012;**17**(10):918-22.
8. Khalili G, Janghorbani M, Sajedi P, Ahmadi G. Effects of adjunct intrathecal magnesium sulfate to bupivacaine for spinal anesthesia: a randomized, double-blind trial in patients undergoing lower extremity surgery. *J Anesth*. 2011;**25**(6):892-7.
9. Koinig H, Wallner T, Marhofer P, Andel H, Horauf K, Mayer N. Magnesium sulfate reduces intra- and postoperative analgesic requirements. *Anesth Analg*. 1998;**87**(1):206-10.
10. Tramer MR, Schneider J, Marti RA, Rifat K. Role of magnesium sulfate in postoperative analgesia. *Anesthesiology*. 1996;**84**(2):340-7.
11. Ozalevli M, Cetin TO, Unlugenc H, Guler T, Isik G. The effect of adding intrathecal magnesium sulphate to bupivacaine-fentanyl spinal anaesthesia. *Acta Anaesthesiol Scand*. 2005;**49**(10):1514-9.
12. Shoeibi G, Firozian A, Tabassomi F. The Additional Effect of Magnesium Sulfate to Lidocaine in Spinal Anesthesia for Cesarean Section. *Int J Pharmacol*. 2007;**3**(5):425-7.
13. Shariat Moharari R, Motalebi M, Najafi A, Zamani MM, Imani F, Etezadi F, et al. Magnesium Can Decrease Postoperative Physiologic Ileus and Postoperative Pain in Major non Laparoscopic Gastrointestinal Surgeries: A Randomized Controlled Trial. *Anesth Pain Med*. 2014;**4**(1):e12750.
14. Arcioni R, Palmisani S, Tiganò S, Santorsola C, Sauli V, Romano S, et al. Combined intrathecal and epidural magnesium sulfate supplementation of spinal anesthesia to reduce post-operative analgesic requirements: a prospective, randomized, double-blind, controlled trial in patients undergoing major orthopedic surgery. *Acta Anaesthesiol Scand*. 2007;**51**(4):482-9.
15. Ghrab BE, Maatoug M, Kallel N, Khemakhem K, Chaari M, Kolsi K, et al. [Does combination of intrathecal magnesium sulfate and morphine improve postcaesarean section analgesia?]. *Ann Fr Anesth Reanim*. 2009;**28**(5):454-9.
16. Buvanendran A, McCarthy RJ, Kroin JS, Leong W, Perry P, Tuman KJ. Intrathecal magnesium prolongs fentanyl analgesia: a prospective, randomized, controlled trial. *Anesth Analg*. 2002;**95**(3):661-6.
17. Jabalameli M, Pakzadmoghadam SH. Adding different doses of intrathecal magnesium sulfate for spinal anesthesia in the cesarean section: A prospective double blind randomized trial. *Adv Biomed Res*. 2012;**1**:7.
18. Unlugenc H, Ozalevli M, Gunduz M, Gunasti S, Urunsak IF, Guler T, et al. Comparison of intrathecal magnesium, fentanyl, or placebo combined with bupivacaine 0.5% for parturients undergoing elective cesarean delivery. *Acta Anaesthesiol Scand*. 2009;**53**(3):346-53.