

Detection of Class 1 and 2 Integrons Among Enteropathogenic *Escherichia coli* Isolates

Mojtaba Memariani¹; Shahin Najar Peerayeh^{1,*}; Seyyed Khalil Shokouhi Mostafavi²; Taghi Zahraei Salehi³

¹Department of Bacteriology, Faculty of Medical Sciences, Tarbiat Modares University, Tehran, IR Iran

²Department of Microbiology, Tonekabon Branch, Islamic Azad University, Tonekabon, IR Iran

³Department of Microbiology, Faculty of Veterinary Medicine, University of Tehran, Tehran, IR Iran

*Corresponding author: Shahin Najar Peerayeh, Department of Bacteriology, Faculty of Medical Sciences, Tarbiat Modares University, Jalale-Ale Ahmad Avenue, P.O. Box 14115-331, Tehran, IR Iran. Tel: +98-2182883870, Fax: +98-2182884555, E-mail: najarp_s@modares.ac.ir

Received: November 24, 2013; Revised: January 11, 2014; Accepted: January 31, 2014

Background: Integrons are frequently detected in clinical isolates of Enterobacteriaceae. These elements are able to capture and express gene cassettes encoding antibiotic resistance. Numerous studies have examined the distribution of integrons in *Escherichia coli*. Despite this, there is a paucity of epidemiological data on the occurrence of integrons as well as extended spectrum β -lactamases (ESBLs) among enteropathogenic *E. coli* isolates.

Objectives: The main aim of this study was to investigate the prevalence of integrons as well as ESBLs among enteropathogenic *E. coli* isolates obtained from children with diarrhea in Tehran, Iran.

Patients and Methods: In total, 42 enteropathogenic *E. coli* strains were isolated from children with diarrhea and examined for the presence of class 1 and 2 integrons. The combined disk method was also performed to detect ESBL production. Statistical analysis was used for the comparison of the categorical data.

Results: Class 1 integron was identified in 24 (57.1%) isolates, while only 2 (4.8%) isolates harbored class 2 integron. Integrons were significantly associated with resistance to certain antibiotics, including; co-trimoxazole ($P = 0.016$) and tetracycline ($P = 0.006$). Of the 42 enteropathogenic *E. coli* isolates, 9 (21.4%) isolates were ESBL producers. However, no significant association was observed between the existence of integrons and ESBL production ($P = 0.26$).

Conclusions: Class 1 integrons are prevalent among enteropathogenic *E. coli* isolates, regardless of whether or not they produce ESBLs. This study emphasizes the alarming role of integrons in antibiotic resistance within diarrheagenic *E. coli* strains.

Keywords: *Escherichia coli*; Integrons; Drug Resistance; Microbial; Diarrhea

1. Background

Integrons are known to be associated with the capture and dissemination of resistance determinants in gram negative pathogens. These genetic elements harbor a gene (*intI*) encoding a site-specific recombinase (integrase), which is a recombination site, *attI*, where the gene cassettes are located, and a promoter located inside *intI*, which causes gene cassettes to be transcribed. Based on the homology of *intI* sequence, at least three distinct classes of integrons have been described. Class 1 integrons are the most ubiquitous type within clinical isolates of gram negative bacteria, whereas class 2 and 3 integrons are less frequently detected (1).

Over the last decade, there has been a dramatic increase in the prevalence of extended spectrum β -lactamases (ESBLs). These enzymes are capable of conferring resistance to third-generation cephalosporins (e.g. ceftazidime and

cefotaxime) and aztreonam but not cephamycins (e.g. cefoxitin) and carbapenems (2). In addition, ESBL genes are usually found within integrons, which may facilitate the spread of such genetic elements. In fact, the acquisition of ESBL genes by strains containing integrons may increase the emergence of multidrug-resistant pathogens under antibiotic selective pressure (3-5).

Although *Escherichia coli* are considered to be a part of the intestinal flora of humans, pathogenic *E. coli* strains can cause diverse gastrointestinal and extraintestinal diseases. Diarrheagenic strains of *E. coli* can be divided into five main pathotypes based on their virulence markers: enteropathogenic *E. coli* (EPEC), enteroinvasive *E. coli* (EIEC), enterotoxigenic *E. coli* (ETEC), enterohaemorrhagic *E. coli* (EHEC), and enteroaggregative *E. coli* (EAEC). Among these pathotypes, EPEC remains the major cause

Implication for health policy/practice/research/medical education:

Integrons are mobile genetic elements thought to play an important role in the dissemination of resistance genes among gram-negative bacteria. The emergence of these resistant gut pathogens can hinder the appropriate management and treatment of gastrointestinal diseases.

Copyright © 2014, Pediatric Infections Research Center. This is an open-access article distributed under the terms of the Creative Commons Attribution-NonCommercial 4.0 International License (<http://creativecommons.org/licenses/by-nc/4.0/>) which permits copy and redistribute the material just in noncommercial uses, provided the original work is properly cited.

of infantile diarrhea in developing countries (6). The pathogen is classified into two subgroups according to the presence of bundle-forming pili (BFP), an adhesin which is a virulence factor of typical EPEC (tEPEC), but it is absent from atypical EPEC (aEPEC). Unlike tEPEC, aEPEC is more widespread in industrialized countries. However, recent researches emphasize their growing prevalence in developing regions (7). In Iran, EPEC is considered to be one of the main causes of diarrhea among children. However, recent studies have revealed a gradual decline in the prevalence of EPEC due to improved hygiene standards and sanitation. Some of these studies have reported prevalence rates of EPEC which varies between 3.7% and 9% in Tehran (8, 9).

2. Objectives

Information regarding the occurrence of antimicrobial resistance in pathogens should be considered in clinical management, when optimal treatment is needed. Numerous studies have examined the distribution of integrons in ESBL-producing *E. coli* strains (10-13). Despite this, there is a paucity of epidemiological data on the occurrence of integrons as well as ESBLs among EPEC isolates. Therefore, the aim of this study was to investigate the prevalence of integrons and ESBLs in EPEC strains isolated from children with diarrhea in Tehran, Iran.

3. Patients and Methods

3.1. Bacterial Isolates and Identification

A total of 413 *E. coli* isolates were obtained from 363 stool samples (one stool per patient) from children less than 10 years-of-age. These patients had already been admitted to three pediatric hospitals in Tehran, from September 2011 to January 2013. The children suffered from acute diarrhea and had evidence of more than three episodes of watery, loose, or bloody stools per day. Briefly, after gross and microscopic examinations, the stool specimens were cultured on MacConkey agar and xylose-lysine desoxycholate agar (Merck, Germany). The cultured plates were incubated at 37°C for 24 h till growth occurred. Up to five lactose-fermenting colonies were selected separately and subjected to routine biochemical tests. Genomic DNA was prepared by boiling each *E. coli* isolate. PCR for the *eae* gene was performed to confirm the identification of EPEC isolates using an Eppendorf thermal cycler (Eppendorf AG, Germany) (14). The PCR amplification was performed in a reaction mixture with a total volume of 25 µL, containing 20 µL distilled water, 50 ng of template DNA, 2.5 µL of 10X Taq polymerase buffer, 0.4 µL dNTPs (10 mmol/L), 1 unit of Taq DNA polymerase 1.5 mmol/L MgCl₂, and 0.4 mmol/L of each primer. The PCR program consisted of an initial denaturation at 94°C for 4 min, followed by 35 cycles of denaturation at 93°C for 30 s, annealing at 55°C for 30 s, and extension at 72°C for 30 s, followed

by a final extension at 72°C for 4 min. In addition, all of the EPEC isolates were studied for the presence of *stx* and *bfp* genes (15, 16). *E. coli* strains ATCC 2348/9 (*eae* and *bfp*) and EDL933 (*stx1* and *stx2*) were used as a positive control. Reactions were performed under the same conditions as described above, except for annealing temperatures (Table 1). PCR products were analyzed by electrophoresis through 1.5% agarose gel and visualized under ultraviolet light after staining with ethidium bromide.

3.2. Identification of Integrons

For detection of the different classes of integrons, PCR was performed for all of the EPEC isolates using specific primers (17) (Table 1). Clinical isolates of *E. coli* containing integrons were used as positive controls.

3.3. Serogrouping

The confirmed EPEC isolates were further serogrouped by the slide agglutination test using EPEC O-specific polyvalent antisera (Baharafshan Institute of Research and Development, Tehran, Iran). The polyvalent antisera consisted of four separated pools, which were able to react with the following serogroups: polyvalent 1 (O26, O55, and O111), polyvalent 2 (O86 and O127), polyvalent 3 (O44, O125, and O128), and polyvalent 4 (O20 and O114).

Table 1. Primers Used for Detection of Virulence Genes and Integrons

Gene	Primer Sequence (5' to 3')	Product (bp)	Ta°C
<i>eae</i>	5'-CTGAACCAGATCGTAACGGC-3'	229	55°C
	5'-TGATAAGCTGCAGTCGAATCC-3'		
<i>bfp</i>	5'-AATGGTGCTTGGCGCTTGCTGC-3'	324	58°C
	5'-GCCGCTTTATCCAACCTGGTA-3'		
<i>stx1</i>	5'-CGCTGAATGTCATTGCTCTGC-3'	302	55°C
	5'-CGTGGTATAGCTACTGTACC-3'		
<i>stx2</i>	5'-CCTCGGTATCTATTCCCGG-3'	516	56°C
	5'-CTGCTGTGACAGTGACAAAACGC-3'		
<i>intI1</i>	5'-CAGTGGACATAAGCCTGTTC-3'	160	54°C
	5'-CCCGAGGCATAGACTGTA-3'		
<i>intI2</i>	5'-CACGGATATGCCA-CAAAAAGGT-3'	789	54°C
	5'-GTAGCAAACGAGTGAC-GAAATG-3'		

3.4. Antibiotic Susceptibility Testing

Antimicrobial susceptibility was determined by the Kirby-Bauer disk diffusion method as per Clinical Laboratory Standards Institute (CLSI) recommendations. The antimicrobial disks (Mast, United Kingdom) used were; ampicillin (10 µg), augmentin (30 µg), cefotaxime (30 µg), ceftazidime (30 µg), ceftoxitin (30 µg), tetracycline (30 µg), ciprofloxacin (5 µg), co-trimoxazole (25 µg), and imipenem (10 µg). *E. coli* ATCC 25922 was used as the quality control.

3.5. Phenotypic Detection of ESBL Producers

The CLSI guidelines for the detection of ESBL producers consist of an initial screening test and a phenotypic confirmatory test. The isolates which showed resistance to at least one of the third-generation cephalosporins (i.e. ceftazidime and cefotaxime) were analysed further using a combined disk. An enhancement in inhibition zone diameter (≥ 5 mm) for either ceftazidime (30 µg) or cefotaxime (30 µg) tested in combination with clavulanic acid, versus its inhibition zone diameter when tested alone, confirmed an ESBL producing organism (2).

3.6. Statistical Analysis

Chi-square or Fisher's exact tests were used for comparison of the categorical data. P-value less than 0.05 was considered to be statistically significant.

4. Results

Amongst the 413 isolates of *E. coli*, 42 were EPEC. The patients comprised 18 (42.9%) males and 24 (57.1%) females, with a female-to-male ratio of 1.3:1. Of the 42 EPEC isolates, 16 (38.1%) were classified as typical EPEC and 26 (61.9%) were classified as atypical EPEC. In addition, integron class 1 was detected in 24 (57.1%) isolates. However, integron class 2 was found to coexist with class 1 in 2 (4.8%) isolates (Figure 1). The most common serogroups among the EPEC strains were found to be members of poly group II (14.3%, n = 6), and poly group III (9.5%, n = 4), whereas the majority of the strains (76.2%, n = 32) were nontypeable (NT) with the polyvalent antisera used. Furthermore, a phenotypic confirmatory test showed that 9 (21.4%) isolates were ESBL producers. Resistance to ampicillin was observed in 26 isolates (61.9%), followed by co-trimoxazole (n = 23, 54.8%), augmentin (n = 18, 42.9%), tetracycline (n = 16, 38.1%), cefotaxime (n = 9, 21.4%), ceftazidime (n = 8, 19%), and ciprofloxacin (n = 7, 16.7%). All of the isolates (100%) were susceptible to imipenem and ceftoxitin. No statistically significant associations were observed between integrons and other mentioned categories (Table 2). However, integrons were significantly associated with resistance to certain antibiotics, including co-trimoxazole (P = 0.016), and tetracycline (P = 0.006) (Table 3).

Table 2. Association Between Integrons and Other Mentioned Categories in EPEC Isolates^a

Features	Number of Isolates	Integron-Positive Isolates, No. (%)	P value
Age group, y			0.91
< 2	22	12 (54.5)	
2-5	13	8 (61.5)	
> 5	17	4 (57.1)	
Gender			0.65
Female	24	13 (54.2)	
Male	18	11 (61.1)	
EPEC group			0.46
Atypic	26	16 (61.5)	
Typic	16	8 (50)	
ESBL production			0.26
No	33	17 (51.5)	
Yes	9	7 (77.8)	

^a Abbreviations: ESBL, extended spectrum β -lactamase; EPEC, enteropathogenic *Escherichia coli*

Table 3. Association Between Integrons and Antibiotic Resistance in EPEC Isolates

Antibiotic Susceptibility	Integron-Positive Isolates No. (%)	P value
Ampicillin		0.93
Resistant (n = 26)	15 (57.7)	
Sensitive (n = 16)	9 (56.3)	
Augmentin		0.86
Resistant (n = 18)	10 (55.6)	
Sensitive (n = 24)	14 (58.3)	
Ceftazidime		1.0
Resistant (n = 8)	5 (62.5)	
Sensitive (n = 34)	19 (55.9)	
Cefotaxime		0.71
Resistant (n = 9)	6 (66.7)	
Sensitive (n = 33)	18 (54.5)	
Ceftoxitin		-
Resistant (n = 0)	0 (0)	
Sensitive (n = 42)	24 (57.1)	
Ciprofloxacin		0.68
Resistant (n = 7)	5 (71.4)	
Sensitive (n = 35)	19 (54.3)	
Co-trimoxazole		0.016
Resistant (n = 23)	17 (73.9)	
Sensitive (n = 19)	7 (36.8)	
Imipenem		-
Resistant (n = 0)	0 (0)	
Sensitive (n = 42)	24 (57.1)	
Tetracycline		0.006
Resistant (n = 17)	14 (82.4)	
Sensitive (n = 25)	10 (40)	

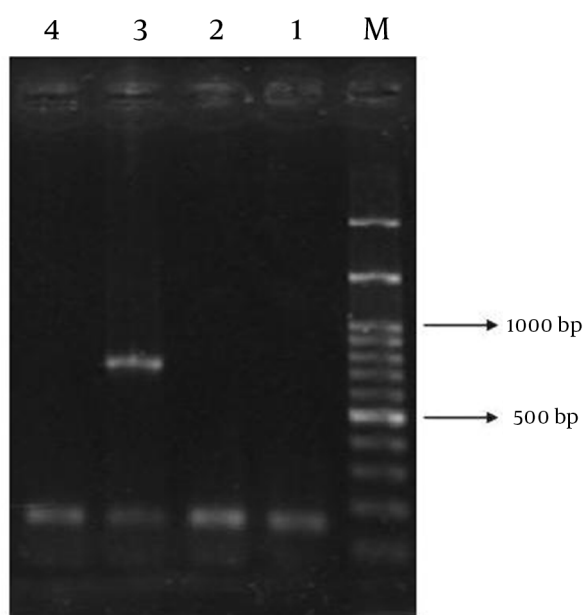


Figure 1. PCR Detection of Class 1 and 2 Integrons Among EPEC Isolates. 100 bp Ladder (Lane M), PCR Products of Class 1 Integrons (Lane 1, 2, and 4), and Both Class 1 and 2 Integrons (Lane 3).

5. Discussion

The problem of resistance to antimicrobial agents is not unique in Iran, where easy and unrestricted access to antibiotics diminishes the value of such agents for those patients who actually need them. The growing prevalence of resistance genes in enteric pathogens is common in developing countries (18, 19). In our research, high levels of resistance to commonly used antibiotics such as ampicillin and co-trimoxazole were observed in EPEC isolates. This result is in accordance with previous findings from other countries, such as; Vietnam (18), Mexico (20), Argentina (21), Tanzania (22), and Peru (19). Since these antibiotics are widely used to treat diarrhea, it is therefore not surprising that we found higher resistance rates against those antimicrobial agents among our isolates. Compared with other investigations (18, 19, 23), our study showed a higher prevalence of resistance to ciprofloxacin in EPEC isolates. However, in a study conducted by Bakhshi et al., almost all of the isolates were found to be resistant to ciprofloxacin, trimethoprim, and tetracycline (8).

Although imipenem and ceftiofloxacin are not indicated to treat diarrhea, we tested the susceptibilities of EPEC isolates to these antibiotics, since they could be empirically or incidentally used. Fortunately, none of the isolates were resistant to those antimicrobial agents, indicating that these antibiotics are the most effective agents against EPEC isolates.

As previously noted, integrons are frequently reported in clinical isolates of Enterobacteriaceae. It is well known

that integrons are able to capture and express gene cassettes encoding certain beta-lactamases. Hence, these genetic elements facilitate the spread of such resistance genes not only within the same species, but also to other genera (3). In Iran, previous studies reported that prevalence rates of integrons in *E. coli* range from 27.1% to 44.8% (24-26). However, these studies have mainly focused on *E. coli* strains other than diarrheagenic pathotypes. In our study, the existence of class 1 integrons was confirmed in 57.1% of the EPEC isolates. By contrast, Najibi et al. reported a higher rate of class 1 integrons (82%) among EPEC isolates (27). Like other investigations, we found that the class 1 integron was more prevalent than those of class 2 (24-26). We also showed that the presence of integrons was independently associated with resistance to co-trimoxazole and tetracycline. Resistance to co-trimoxazole could be directly related to the presence of *sul* and/or *dfr* genes within the integrons, while the association of tetracycline with the presence of an integron is likely to be due to *tet* genes which have been found on R-plasmids or transposons and cotransferred along with their respective integrons (28). Nevertheless, for better elucidation of these associations, sequencing of gene cassettes within integrons should be performed.

As for ESBL detection and resistance to third-generation cephalosporins, our result showed a low incidence of ESBL production among EPEC isolates, which contrasts with that of other studies (18, 20). However, Alikhani et al. reported a much higher rate of resistance to cefotaxime (73.6%) among EPEC strains (23). Although previous studies have shown the association of ESBL genes with class 1 integrons (3, 29, 30), no significant association was observed between these two categories in this study ($P = 0.26$) using a Fisher's exact test. This result may indicate that the selection and spread of ESBL genes does not play a major role in integron dispersion, except when ESBL genes are within an integron platform. However, with a small sample size, the data should be interpreted with caution and should not be extrapolated to a larger population, or be used to make broad conclusions. Given the fact that the incidence of ESBLs was low among EPEC isolates, future studies with a larger sample size will yield more accurate results.

In the present study, most of EPEC isolates were not typeable with diagnostic antisera and belonged mainly to the atypical group. Therefore, serogrouping for identification should not be used in laboratories, except as part of outbreak investigations. Because of this, PCR is highly recommended for the proper identification of EPEC (6).

In recent years, the significance of EPEC as the causative agent of diarrhea has declined in the literature. Similarly, our finding is in agreement with other results which showed a decline in the number of diarrheal cases in several regions in Iran, probably due to improvements in hygiene standards (8, 9). It is worth noting that breastfeeding promotion could reduce gastrointestinal infections

as milk contains antibodies (e.g. SIgA) which protect the intestinal epithelium against diarrheagenic pathogens. Indeed, the WHO guidelines on diarrhea management recommend continued breastfeeding during episodes of diarrhea. EPEC diarrhea does not usually need antibiotic therapy except for severe cases. On the other hand, asymptomatic carriage of enteric pathogens is very common in developing countries. Multiple factors influence colonization rather than illness, including; host susceptibility (children ages, breastfeeding, nutrition, etc.), bacterial factors (virulence gene content), and environmental factors (poor hygiene) (6). One of the major drawbacks of the current study was that healthy carriers were not involved. Therefore, the prevalence of EPEC among asymptomatic carriers could not be assessed.

In conclusion, our results revealed that class 1 integrons are prevalent among EPEC isolates, regardless of whether or not they produce ESBLs. Without doubt, these isolates will be capable of capturing and expressing new drug resistance determinants. Finally, the emergence of resistant gut pathogens can hinder the appropriate management and treatment of gastrointestinal diseases.

Acknowledgements

We would like to thank Mohsen Mirzaee for providing integron-positive controls.

Authors' Contribution

Mojtaba Memariani performed the microbiological and molecular studies. Shahin Najar Peerayeh designed the research. Seyyed Khalil Shokouhi Shokouhi Mostafavi and Taghi Zahraei Salehi advised the research.

Financial Disclosure

All authors have no conflicts of interest to declare.

Funding/Support

This study was performed with a grant from Tarbiat Modares University, Faculty of Medical Sciences, Tehran, Iran.

References

1. Cambray G, Guerout AM, Mazel D. Integrons. *Annu Rev Genet.* 2010;**44**:141-66.
2. Paterson DL, Bonomo RA. Extended-spectrum beta-lactamases: a clinical update. *Clin Microbiol Rev.* 2005;**18**(4):657-86.
3. Machado E, Canton R, Baquero F, Galan JC, Rollan A, Peixe L, et al. Integron content of extended-spectrum-beta-lactamase-producing *Escherichia coli* strains over 12 years in a single hospital in Madrid, Spain. *Antimicrob Agents Chemother.* 2005;**49**(5):1823-9.
4. Liu LT, Wan LH, Song XH, Xiong Y, Jin SJ, Zhou LM. Relevance of class 1 integrons and extended-spectrum beta-lactamases in drug-resistant *Escherichia coli*. *Mol Med Rep.* 2013;**8**(4):1251-5.
5. Yao F, Qian Y, Chen S, Wang P, Huang Y. Incidence of extended-spectrum beta-lactamases and characterization of integrons in extended-spectrum beta-lactamase-producing *Klebsiella pneumoniae* isolated in Shantou, China. *Acta Biochim Biophys Sin*

- (Shanghai). 2007;**39**(7):527-32.
6. Ochoa TJ, Contreras CA. Enteropathogenic *Escherichia coli* infection in children. *Curr Opin Infect Dis.* 2011;**24**(5):478-83.
7. Trabulsi LR, Keller R, Tardelli Gomes TA. Typical and atypical enteropathogenic *Escherichia coli*. *Emerg Infect Dis.* 2002;**8**(5):508-13.
8. Bakhshi B, Fallahzad S, Pourshafie MR. The occurrence of atypical enteropathogenic *Escherichia coli* strains among children with diarrhea in Iran. *J Infect Chemother.* 2013;**19**(4):615-20.
9. Nakhjavani FA, Emameini M, Hosseini H, Iman-Eini H, Aligholi M, Jabalameli F, et al. Molecular analysis of typical and atypical enteropathogenic *Escherichia coli* (EPEC) isolated from children with diarrhoea. *J Med Microbiol.* 2013;**62**(Pt 2):191-5.
10. Akram M, Shakil S, Khan AU. Prevalence of integrons, blaCTX-M and blaTEM resistance markers among ESBL-producing uropathogenic *Escherichia coli* isolates: first report of genomic blaCTX-M from India. *J Chemother.* 2011;**23**(3):131-4.
11. Vinue L, Lantero M, Saenz Y, Somalo S, de Diego I, Perez F, et al. Characterization of extended-spectrum beta-lactamases and integrons in *Escherichia coli* isolates in a Spanish hospital. *J Med Microbiol.* 2008;**57**(Pt 7):916-20.
12. Mokracka J, Oszynska A, Kaznowski A. Increased frequency of integrons and beta-lactamase-coding genes among extraintestinal *Escherichia coli* isolated with a 7-year interval. *Antonie Van Leeuwenhoek.* 2013;**103**(1):163-74.
13. Chen T, Feng Y, Yuan JL, Qi Y, Cao YX, Wu Y. Class 1 integrons contribute to antibiotic resistance among clinical isolates of *Escherichia coli* producing extended-spectrum beta-lactamases. *Indian J Med Microbiol.* 2013;**31**(4):385-9.
14. Moyo SJ, Maselle SY, Matee MI, Langeland N, Mylvaganam H. Identification of diarrheagenic *Escherichia coli* isolated from infants and children in Dar es Salaam, Tanzania. *BMC Infect Dis.* 2007;**7**:92.
15. Gunzburg ST, Tornieporth NG, Riley LW. Identification of enteropathogenic *Escherichia coli* by PCR-based detection of the bundle-forming pilus gene. *J Clin Microbiol.* 1995;**33**(5):1375-7.
16. Rey J, Blanco JE, Blanco M, Mora A, Dahbi G, Alonso JM, et al. Serotypes, phage types and virulence genes of shiga-producing *Escherichia coli* isolated from sheep in Spain. *Vet Microbiol.* 2003;**94**(1):47-56.
17. Koeleman JG, Stooft J, Van Der Bijl MW, Vandenbroucke-Grauls CM, Savelkoul PH. Identification of epidemic strains of *Acinetobacter baumannii* by integrase gene PCR. *J Clin Microbiol.* 2001;**39**(1):8-13.
18. Nguyen TV, Le PV, Le CH, Weintraub A. Antibiotic resistance in diarrheagenic *Escherichia coli* and *Shigella* strains isolated from children in Hanoi, Vietnam. *Antimicrob Agents Chemother.* 2005;**49**(2):816-9.
19. Ochoa TJ, Ruiz J, Molina M, Del Valle LJ, Vargas M, Gil AI, et al. High frequency of antimicrobial drug resistance of diarrheagenic *Escherichia coli* in infants in Peru. *Am J Trop Med Hyg.* 2009;**81**(2):296-301.
20. Estrada-Garcia T, Cerna JF, Paheco-Gil L, Velazquez RF, Ochoa TJ, Torres J, et al. Drug-resistant diarrheagenic *Escherichia coli*, Mexico. *Emerg Infect Dis.* 2005;**11**(8):1306-8.
21. Binsztejn N, Picandet AM, Notario R, Patrino E, De Lesa ME, De Petris A, et al. [Antimicrobial resistance among species of *Salmonella*, *Shigella*, *Escherichia*, and *aeromonas* isolated from children with diarrhea in 7 Argentinian centers]. *Rev Latinoam Microbiol.* 1999;**41**(3):121-6.
22. Vila J, Vargas M, Casals C, Urassa H, Mshinda H, Schelleberg D, et al. Antimicrobial resistance of diarrheagenic *Escherichia coli* isolated from children under the age of 5 years from Ifakara, Tanzania. *Antimicrob Agents Chemother.* 1999;**43**(12):3022-4.
23. Alikhani MY, Hashemi SH, Aslani MM, Farajnia S. Prevalence and antibiotic resistance patterns of diarrheagenic *Escherichia coli* isolated from adolescents and adults in Hamedan, Western Iran. *Iran J Microbiol.* 2013;**5**(1):42-7.
24. Farshad S, Japoni A, Hosseini M. Low distribution of integrons among multidrug resistant *E. coli* strains isolated from children with community-acquired urinary tract infections in Shiraz, Iran. *Pol J Microbiol.* 2008;**57**(3):193-8.
25. Japoni A, Gudarzi M, Farshad S, Basiri E, Ziyaeyan M, Alborzi A,

- et al. Assay for integrons and pattern of antibiotic resistance in clinical *Escherichia coli* strains by PCR-RFLP in Southern Iran. *Jpn J Infect Dis.* 2008;**61**(1):85-8.
26. Rezaee MA, Sheikhalizadeh V, Hasani A. Detection of integrons among multi-drug resistant (MDR) *Escherichia coli* strains isolated from clinical specimens in northern west of Iran. *Braz J Microbiol.* 2011;**42**(4):1308-13.
27. Najibi S, Bakhshi B, Fallahzad S, Pourshafie MR, Katouli M, Sattari M, et al. Distribution of class 1 integrons among enteropathogenic *Escherichia coli*. *Can J Microbiol.* 2012;**58**(5):637-43.
28. Soufi L, Abbassi MS, Saenz Y, Vinue L, Somalo S, Zarazaga M, et al. Prevalence and diversity of integrons and associated resistance genes in *Escherichia coli* isolates from poultry meat in Tunisia. *Foodborne Pathog Dis.* 2009;**6**(9):1067-73.
29. Bonnet R. Growing group of extended-spectrum beta-lactamases: the CTX-M enzymes. *Antimicrob Agents Chemother.* 2004;**48**(1):1-4.
30. Canton R, Coque TM, Baquero F. Multi-resistant Gram-negative bacilli: from epidemics to endemics. *Curr Opin Infect Dis.* 2003;**16**(4):315-25.

Archive of SID