

## Original Article

## Evaluating Stress Distribution Pattern in Periodontal Ligament of Maxillary Incisors during Intrusion Assessed by the Finite Element Method

Parisa Salehi <sup>a</sup>, Alayar Gerami <sup>b</sup>, Amirhosein Najafi <sup>c</sup>, Sepideh Torkan <sup>c</sup>

<sup>a</sup> Orthodontic Research Center, School of Dentistry, Shiraz University of Medical Sciences, Iran.

<sup>b</sup> Dept. of Orthodontics and Dental Research Center, School of Dentistry, Tehran University of Medical Science, Iran.

<sup>c</sup> Orthodontist, Orthodontic Research Center, Shiraz University of Medical Sciences, Shiraz, Iran.

### KEY WORDS

Finite Element Method;  
Intrusion;  
Miniscrew

Received October 2014;  
Received in revised form April 2015;  
Accepted May 2015;

### ABSTRACT

**Statement of the Problem:** The use of miniscrews has expedited the true maxillary incisor intrusion and has minimized untoward side effects such as labial tipping.

**Purpose:** The aim of this study was to assess the stress distribution in the periodontal ligament of maxillary incisors when addressed to different models of intrusion mechanics using miniscrews by employing finite element methods. The degree of relative and absolute intrusion of maxillary incisors in different conditions was also evaluated.

**Materials and Method:** Finite element model of maxillary central incisor to first premolar was generated by assembling images obtained from a three-dimensional model of maxillary dentition. Four different conditions of intrusion mechanics were simulated with different placement sites of miniscrews as well as different points of force application. In each model, 25-g force was applied to maxillary incisors via miniscrews.

**Results:** In all four models, increased stress values were identified in the apical region of lateral incisor. Proclination of maxillary incisors was also reported in all the four models. The minimum absolute intrusion was observed when the miniscrew was placed between the lateral incisor and canine and the force was applied at right angles to the archwire, which is very common in clinical practice.

**Conclusion:** From the results yield by this study, it seems that the apical region of lateral incisor is the most susceptible region to root resorption during anterior intrusion. When the minimum flaring of maxillary incisors is required in clinical situations, it is suggested to place the miniscrew halfway between the roots of lateral incisor and canine with the force applied to the archwire between central and lateral incisor. In order to achieve maximum absolute intrusion, it is advised to place miniscrew between the roots of central and lateral incisors with the force applied at a right angle to the archwire between these two teeth.

**Corresponding Author:** Torkan S., Orthodontic Research Center, Shiraz University of Medical Sciences, Shiraz, Iran. Email: [sepideh.torkan@yahoo.com](mailto:sepideh.torkan@yahoo.com) & [orthorcf@gmail.com](mailto:orthorcf@gmail.com) Tel: +98-71-36280801

Cite this article as: Salehi P., Gerami A., Najafi A., Torkan S. Evaluating Stress Distribution Pattern in Periodontal Ligament of Maxillary Incisors during Intrusion Assessed by the Finite Element Method. *Dent Shiraz Univ Med Sci.*, December 2015; 16(4): 314-322.

### Introduction

Correction of deep overbite can be accomplished through different treatment strategies. Nonsurgical methods include either extrusion of posterior teeth or intrusion of anterior teeth or both. The decision depends

on several factors such as incisor display, smile line and vertical dimension of the patient's face. [1-3] In patients with great interlabial gap and gummy smile, intrusion of maxillary incisor is the treatment of choice. [4]

Conventional methods for incisor intrusion include

2×4 appliances such as utility arch, Burstone intrusion arch or reverse curved arches. [5-11] Some adverse side effects such as labial tipping of upper anterior teeth might result. Therefore, anterior teeth protrusion would be the actual result of the intrusion arch mechanics in lieu of true incisor intrusion. [3, 11]

The use of temporary anchorage devices (TADs) has facilitated different types of tooth movements. [12-16] Miniscrews offer several advantages such as immediate loading, easy insertion and removal process, and several placement sites along with minimal expenses for the patient. [17] Previous investigations have reported successful intrusion of maxillary anterior teeth using miniscrews when relatively light forces were used. [17-19] It has been shown that true maxillary incisor intrusion would be possible with the use of miniscrews [18-19] and untoward side effects such as labial tipping has been reduced to a minimum, unlike the situations that conventional intrusion mechanics are employed. [20] Nevertheless, the placement site of the miniscrew as well as the point of force application play a very important role in the displacement of the incisor segment and therefore must be selected carefully. [21]

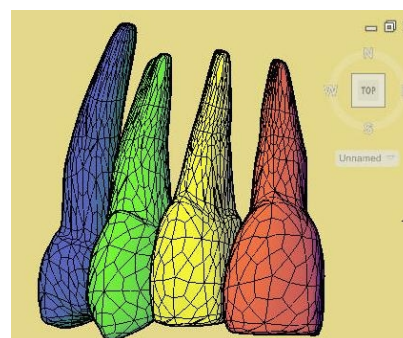
It has been well documented that the principal factor in the initiation of orthodontic tooth movement is the biologic changes that take place in the PDL. However, due to the complex structure of the periodontal tissue, proper assessment of stress profiles and the resultant changes in it after application of orthodontic forces is difficult. [22]

In order to assess the biomechanical factors such as stress, strain and displacement in the teeth as well as the surrounding structures genuinely, finite element method (FEM) was introduced to the field of biomechanical studies. [23] This method is used to evaluate complex structures biomechanically by dividing them into smaller pieces namely element and then carefully analyzing the assembled elements to form a mathematical model of a certain structure. [24] The results of FEM analysis not only depends on the force magnitude, but also the deformation of the structures as well as their geometries. [25] Since this method has the ability of assessing different shapes with different properties, it seems to be a viable method in analyzing the changes in the periodontal ligament and the surrounding structures following tooth movement. [26]

The distribution of stress on the central incisor root with different morphologies under different types of orthodontic tooth movements has been evaluated. [27] The aim of this study was to use FEM to assess the stress profiles in the periodontal ligament of maxillary incisors during orthodontic intrusion via miniscrews. This can lead to a better understanding of the best site of placement of the miniscrews and the point of force application for the desired type of tooth movement.

**Materials and Method**

The central incisor, lateral incisor, canine and first premolar were extracted from a 3D computer model of the maxillary teeth on an ovoid arch (3-D studios.com™). Since the model was in the format of DXF, the teeth were defined as surfaces and thus needed to be turned into solid bodies. This process was carried out via the Auto Cad software (version 2011), and the format was changed into SAT which made it possible to work within the ANSYS environment, version 12 (Canonsburg; Pa) (Figure 1).



**Figure 1:** The three-dimensional model of the maxillary central to first premolar

The tip and torque degree of each tooth is outlined in Table 1.

**Table 1:** The prescribed tip and torque for maxillary teeth in the 3-D model (in degrees)

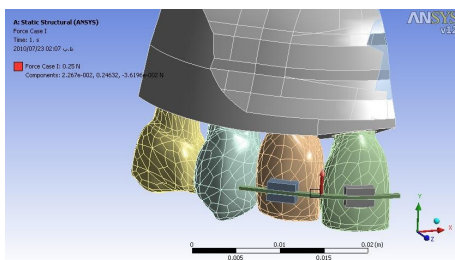
Tooth	Tip (degrees)	Torque (degrees)
Central	5	14
Lateral	8	7
Canine	10	-3
First premolar	0	-7

The periodontal membrane was supposed to have a uniform thickness (0.25 mm) with a linear behavior, [24] even though this did not truly reflect the complex behavior of PDL, but this method has been shown to be valid for orthodontic loading in FEM studies. [28-29]

During the next step, cortical bone was added to the 3D model. The thickness of the cortical bone started from 1 mm at the crest of alveolar bone and increased to 2 mm toward the apical area of the roots of the teeth. [30]

The three-dimensional models of 0.018"×0.025" standard Edgewise brackets (3M Unitek; Monrovia, CA) were fabricated on the labial surfaces of the central and lateral incisors with a 4-mm distance from the incisal edge of the central incisor and 3.5 mm from the lateral incisor. The brackets were attached to the teeth so that the midpoint of the bracket would coincide with the midpoint of the labial surfaces of the incisors. The inter-bracket distance was 7 mm. [31] Afterwards, the 3D model of the arch wire (0.016×0.022) was also designed and placed inside the bracket slots.

The entire assembly of the 3D model was imported into the ANSYS workbench software (version 12.0.1; Canonsburg, Pa) (Figure 2).



**Figure 2:** The finite element model prior to loading

All the materials in the finite element analysis were assumed to be homogenous, isotropic, and linearly elastic. The interfaces of the bracket-tooth, bracket-archwire, and bone-miniscrew were defined as fully bonded surfaces. [24] All the mechanical properties of the components of the model are represented in Table 2.

**Table 2:** Mechanical properties of different materials in the finite element model

Material	Young's Modulus	Poisson's Ratio
Tooth	$2 \times 10^4$	0.3
PDL	0.68	0.49
Alveolar Bone (Mean)	$2 \times 10^3$	0.3
Stainless Steel	$2.1 \times 10^5$	0.3

In order to evaluate the stress profiles in the periodontal ligament as well as the rate of vertical displacement of the incisal edges of the incisors, miniscrews were reconstructed in the finite element model in four different conditions. In all four different conditions, miniscrews were placed at a 4-mm distance from the

crest of the alveolar bone. This distance was selected based on the fact that the mucogingival junction of the upper anterior teeth is located 4-5 mm from the gingival margin. [32] Lim *et al.* also suggested the miniscrews to be placed 6 mm apical to the crest of the alveolar bone. [33] In the sagittal plane, the miniscrews were fabricated 1 mm external to the bone to represent the thickness of the gingiva. [32]

In the first model, the miniscrew was placed halfway between the roots of central and lateral incisors and the force was applied at a right angle to the archwire between these two teeth.

In the second model, the miniscrew was placed halfway between the roots of lateral incisor and canine and the force was applied to a point on the archwire between the central and lateral incisors.

In the third model, the miniscrew was placed halfway between the roots of lateral incisor and canine and the force was applied at a right angle to the archwire between the lateral incisor and canine.

In the fourth model, the miniscrew was placed halfway between the roots of central and lateral incisors and the force was applied to a point on the archwire between lateral incisors and canine.

In each model, the finite element analysis was realized by applying a total of 25 g force from the miniscrew to the arch wire. [1]

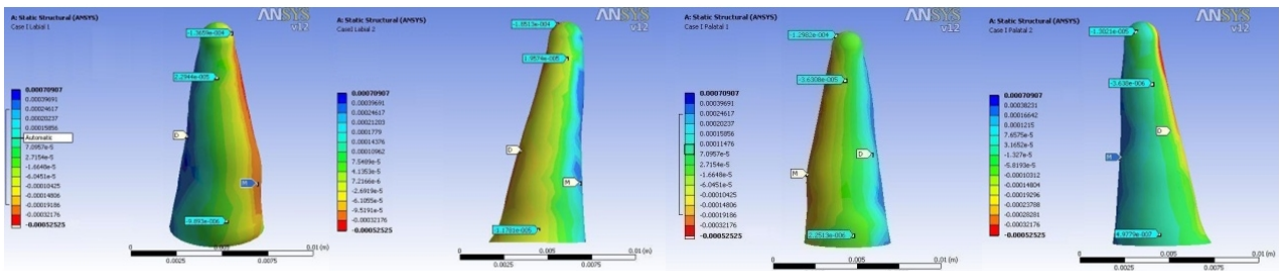
The total number of elements used in this finite element model was 67780 elements and 119583 nodes. Boundary conditions were assigned to the nodes on the cortical bone above the apical area of the teeth as zero displacement in all directions. All the other nodes had 3 translational degree of freedom (X: mesiodistal; Y: vertical; Z: vestibulopalatal).

**Statistical analysis**

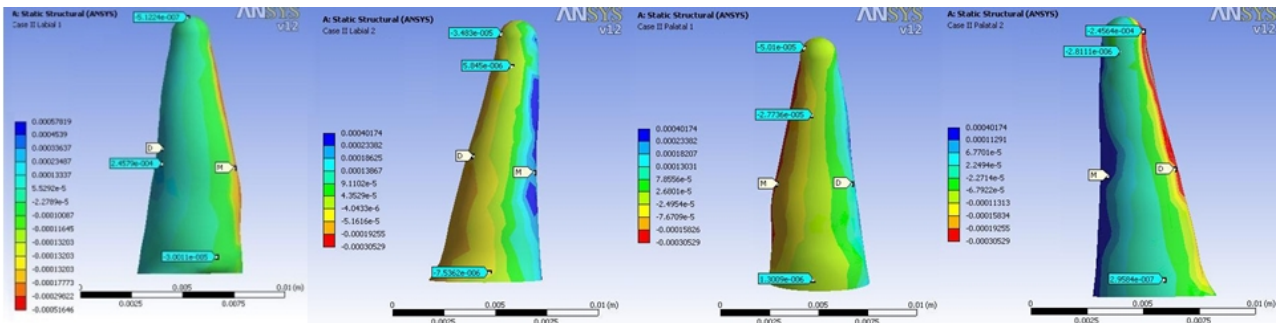
Descriptive analysis was used to analyze the degree of displacement in the Y plane (vertical) as well as Z plane (vestibulopalatal). Using the finite element analysis, the stress profiles in the periodontium of the central and lateral incisors were also defined.

**Results**

In all models, the highest stress magnitude was produced near the apex of the lateral incisor on the palatal surface. Figures 3 to 6 demonstrate the Von Mises stress distribution along the root surfaces of the central and



**Figure 3:** Von Mises stress distribution along the root surfaces of the central and lateral incisors in the first model (from left to right: central: buccal, lateral: buccal, central: palatal, lateral: palatal; M: mesial, D: distal)



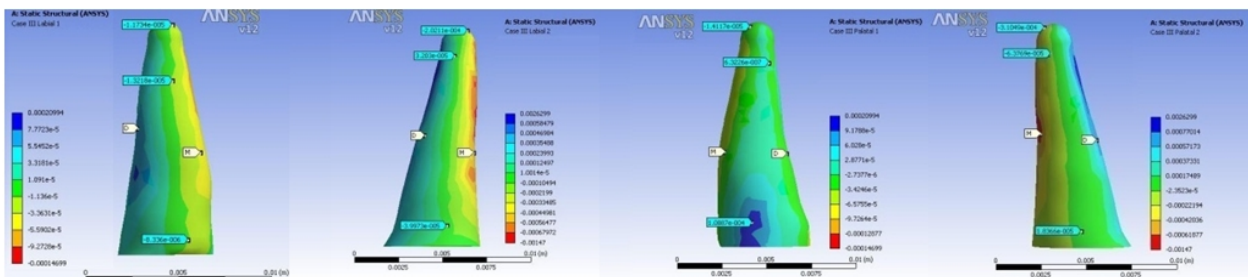
**Figure 4:** Von Mises stress distribution along the root surfaces of the central and lateral incisors in the second model (from left to right: central: buccal, lateral: buccal, central: palatal, lateral: palatal; M: mesial, D: distal)

lateral incisors. Tables 3 to 10 outline the stress distribution pattern of the central and lateral teeth based on their respective models.

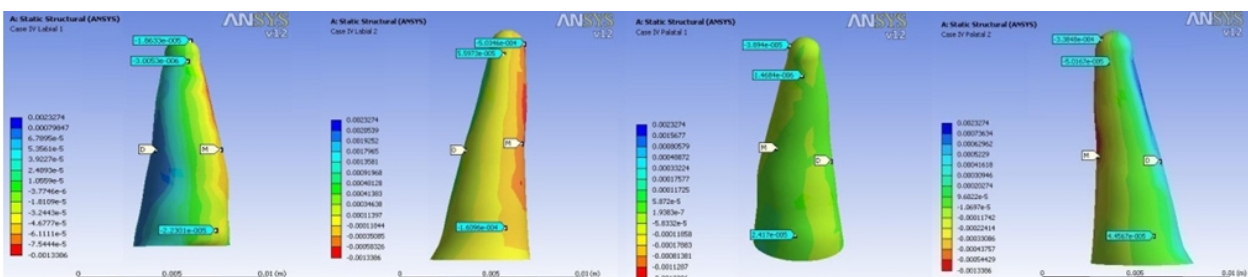
Vertical displacement of the nodes at the incisal edge of the incisors, relative intrusion and absolute intrusion of the incisors in the four models are outlined in Table 11. In order to compare the values for absolute

and relative intrusion in the four models in Table 11 more readily, the smallest value was considered as the base (100) and the rest of the values were ranked accordingly. The results are presented in Table 12.

In all four models of loading except for the first model, the labial displacement of the lateral incisor (Z plane) was more than the central incisor. The maximum



**Figure 5:** Von Mises stress distribution along the root surfaces of the central and lateral incisors in the third model (from left to right: central: buccal, lateral: buccal, central: palatal, lateral: palatal; M: mesial, D: distal)



**Figure 6:** Von Mises stress distribution along the root surfaces of the central and lateral incisors in the fourth model (from left to right: central: buccal, lateral: buccal, central: palatal, lateral: palatal; M: mesial, D: distal)

**Table 3:** Maximum stress distribution in PDL of the central teeth in the first model

PDL of the Central Teeth (First Model)			
Mesial Surface 1/3 Apical, Apex	Labial Surface 1/3 Marginal	Distal Surface 1/3 Marginal	Palatal Surface 1/3 Apical, Apex

**Table 4:** Maximum stress distribution in PDL of the lateral teeth in the first model

PDL of the Lateral Teeth (First Model)			
Mesial Surface 1/3 Marginal	Labial Surface 1/3 Marginal	Distal Surface 1/3 Apical, Apex	Palatal Surface 1/3 Apical, Apex

labial displacement was observed in the fourth model followed by the first, third, and second models, respectively (4388 in the fourth model vs. 1133 in the second model).

In all four models except for the first model, the degree of relative intrusion (Y plane, apical displacement of the incisal edge) observed in the lateral incisor was higher than the central incisor. The maximum relative intrusion values were reported in the first model, followed by the fourth, second and third models, respectively (the maximum relative intrusion of the lateral incisor were 4038 vs. 2055 for the first and third models, respectively).

In all four models, the amount of absolute intrusion (Y plane, apical displacement of the apex) of the central incisor was more than the lateral incisor. The maximum absolute intrusion values were identified in the first model followed by the second, fourth and third models respectively (2116 in the first model compared with 356 in the third model).

As it can be deduced from Table 11, in all four models except for the second one in the central incisor case, the values recorded for the labial displacement of each tooth was higher than the values recorded for the absolute intrusion of the same tooth (the values for the labial displacement and absolute intrusion of the central incisors were respectively 3529 and 2116 in the first model, 1947 and 356 in the third model and 3942 and 914 in the fourth model).

**Discussion**

Successful intrusion of the anterior teeth without placing adverse side effects on the posterior teeth has been an issue of interest in orthodontic camouflage of gummy smile, vertical maxillary excess patients. Miniscrews have provided the clinicians with an opportunity to obtain the desired intrusion with minimal side effects. However, there are still some obscure data regarding the optimal placement site and the point of force application for each type of tooth movement.

This finite element study was conducted to analyze different patterns of stress distribution in the periodontal ligament of maxillary incisors upon placing intrusion force on them. The degree of displacement in different planes of space was also studied. In order to maximize the accuracy of the results of the study, the cortical bone was added manually to the model with different thicknesses at different levels to better represent the maxillae. [24]

When four different models of the study were compared, it was observed that in the first and second models, root divergence was reported between the central and lateral incisors; as the central incisor experienced an uncontrolled tipping movement of the crown to distal and labial along with intrusion; while, in the lateral incisor, an uncontrolled tipping of the crown was recorded to mesial and labial. On the other hand, in the third and fourth models, a convergence was experienced between the root of the incisors, as both the central and

**Table 5:** Maximum stress distribution in PDL of the central teeth in the second model

PDL of the Central Teeth (Second Model)			
Mesial Surface 1/3 Apical, 1/3 Middle	Labial Surface 1/3 Marginal	Distal Surface 1/3 Marginal	Palatal Surface 1/3 Apical, Apex

**Table 6:** Maximum stress distribution in PDL of the lateral teeth in the second model

PDL of the Lateral Teeth(Second Model)			
Mesial Surface 1/3 Marginal	Labial Surface 1/3 Marginal	Distal Surface 1/3 Apical, 1/3 Middle, Apex	Palatal Surface 1/3 Apical, Apex

**Table 7:** Maximum stress distribution in PDL of the central teeth in the third model

PDL of the Central Teeth (Third Model)			
Mesial Surface 1/3 Apical, 1/3 Middle, Apex	Labial Surface 1/3 Marginal, 1/3 Middle	Distal Surface 1/3 Marginal	Palatal Surface 1/3 Apical , Apex

**Table 8:** Maximum stress distribution in PDL of the lateral teeth in the third model

PDL of the Lateral Teeth(Third Model)			
Mesial Surface 1/3 Apical, 1/3 Middle, Apex	Labial Surface 1/3 Marginal	Distal Surface 1/3 Marginal	Palatal Surface 1/3 Apical , Apex

lateral incisor crowns were tipped distally and labially. In order to decrease the undesired mesiodistal crown movement, it can be advocated that the largest possible archwire be fit into the bracket slot (0.018×0.025-in) to minimize the resultant deflection in the archwire. The present study, demonstrated that lateral and central incisors move independently and therefore do not act as a single unit. Reimann *et al.* also disproved the theory of a single center of resistance for the entire anterior segment. [34] Using a larger diameter of the main archwire might decrease the play between the wire and bracket, leading to a more similar center of resistance for both incisors and more similar type of movement in both teeth. [34]

In comparison between the four models regarding the actual value of labial displacement, the minimal labial displacement of the incisal edges of the incisors occurred in the second model, followed by the third, first and fourth models, respectively. What first and fourth models had in common was the miniscrew placement site. Thus, it can be concluded that the closer the miniscrew is placed to the midline, the more labial tipping of the incisors can be expected. In addition, it can be speculated that the placement site of the miniscrew plays a more important role than the point of force application in the resultant labial tipping. Based on the study conducted by Burstone, the intrusive force must be applied to a point between the lateral incisor and canine to decrease the untoward labial tipping of the

entire segment. [2, 35-36] Other studies suggested the center of resistance of the anterior segment to be 8-10 mm apical and 5-7 mm distal to the lateral incisor. [2, 35, 37]

In all four models, however, a degree of labial tipping was observed. Therefore, the center of resistance was probably located more distally based on the study of Vanden Bulcke *et al.* who advocated the force to be applied between the canine and first premolar. [38] Polat-Ozsoy *et al.* placed the miniscrew between the lateral incisor and canine; the third model of the present study resembles their model. They reported a minimal increase in the proclination of the upper incisors which was not statistically significant. [19]

It should be considered that the center of resistance depends on several factors such as the surrounding bone, morphology and the length of the roots, and the inclination of the upper teeth. Therefore, the optimal point for the applied force depends on the individual variations. [37]

In all four different models, Von Mises stress distribution was recorded to be the highest in the apex of the lateral incisor. This can be attributed to the smaller surface area and geometry of the apex of the lateral incisor. [39] This area should be considered as a point highly prone to resorption in intrusive mechanics. This result was in consistence with previous histological findings that reported the concentration of the cell-free area and hyalinization zones at the apex which corresponded to

**Table 9:** Maximum stress distribution in PDL of the central teeth in the fourth model

PDL of the Central Teeth (Fourth Model)			
Mesial Surface 1/3 Apical, Apex	Labial Surface 1/3 Marginal, 1/3 Middle	Distal Surface 1/3 Marginal, 1/3 Middle	Palatal Surface 1/3 Apical , Apex

**Table 10:** Maximum stress distribution in PDL of the lateral teeth in the fourth model

PDL of the Lateral Teeth (Fourth Model)			
Mesial Surface 1/3 Apical, Apex	Labial Surface 1/3 Marginal	Distal Surface 1/3 Marginal	Palatal Surface 1/3 Apical, Apex

**Table 11:** Vertical displacement of the nodes at the incisal edge of maxillary incisors, the amount of relative and absolute intrusion in four models of loading (the values are presented in micrometer)

		First model	Second model	Third model	Fourth model
Central incisor	Relative intrusion	$3.45 \times 10^{-1}$	$1.88 \times 10^{-1}$	$1.140 \times 10^{-1}$	$2.050 \times 10^{-1}$
	Labial displacement of the incisal edge	$2.919 \times 10^{-1}$	$9.184 \times 10^{-2}$	$1.610 \times 10^{-1}$	$3.260 \times 10^{-1}$
	Absolute intrusion	$1.75 \times 10^{-1}$	$1.032 \times 10^{-1}$	$2.994 \times 10^{-2}$	$7.566 \times 10^{-2}$
Lateral incisor	Relative intrusion	$3.340 \times 10^{-1}$	$2.630 \times 10^{-1}$	$1.700 \times 10^{-1}$	$3.11 \times 10^{-1}$
	Labial displacement of the incisal edge	$2.573 \times 10^{-1}$	$9.376 \times 10^{-2}$	$2.006 \times 10^{-1}$	$3.628 \times 10^{-1}$
	Absolute intrusion	$1.167 \times 10^{-1}$	$5.985 \times 10^{-2}$	$8.27 \times 10^{-3}$	$4.41 \times 10^{-2}$

higher stress in that area. [40] It was also reported that a substantial amount of stress was created in the cementum and PDL as a whole. [41]

Since the stress is the principal cause of the bio-mechanical response, it is expected the maximum absolute intrusion be recorded in the lateral incisor as well. However, the maximum absolute intrusion was observed in the central incisor in all four models. This can be explained by the fact the mean movement of the apex of lateral incisor in all three planes of space was greater than the central incisor. Absolute intrusion, on the other hand, is merely a movement in vertical direction.

The maximum absolute intrusion of the incisors was defined in the first model, followed by the second, fourth, and third models, respectively. Since the point of force application was the same in the first and second models, it can be speculated that the point of force application was a more important determinant in the degree of absolute intrusion than the placement site of the miniscrew. The higher absolute intrusion of the first model compared with the second one can be attributed to the bigger vertical vector in the first model. An interesting result was that the minimum absolute intrusion observed in the third model which is the most common method of force application for intrusion mechanics in clinical practice.

The absolute intrusion of the central incisor in all four models was more than the lateral incisor, while the opposite was true regarding the relative intrusion in all four models except for the first model. Therefore, it can

be concluded that the labial tipping of the lateral incisor was greater than the central incisor in the three aforementioned models.

Since the present study did not consider the individual variations, it should be kept in mind that these variations require an individualized mechanics of force system for each person. As stated by Kamble *et al.*, central incisors with deviated root morphologies are more prone to root resorption following different types of orthodontic tooth movement; thus, highlighting the effect of individual variation. [27] The finite element analysis only considers the initial tooth movements and stress distributions in the periodontal ligament; as the process of tooth movement progresses, the force system, stresses and biologic responses of each individual might change. There were other limitations in the methodology of this study. The values used for the mechanical properties of different tissues were constant in this study, but this is not the case in clinical practice. The periodontal ligament was also considered to have a uniform and homogenous thickness which does not reflect true clinical situations. Therefore, the results might not be applicable to each individual. [24]

**Conclusion**

The apical region of lateral incisor experienced the highest stress levels. This site should be considered as the most susceptible site to resorption. The maximum absolute and relative intrusion was obtained in the first model. Therefore, in clinical situation in which intrusion

**Table 12:** Comparison of labial displacement, relative and absolute intrusion of the maxillary incisors in the four models. 100= $8.27 \times 10^{-3}$

		First model	Second model	Third model	Fourth model
Central incisor	Relative intrusion	4171	2273	1378	2478
	Labial displacement of the incisal edge	3529	1110	1947	3942
	Absolute intrusion	2116	1245	356	914
Lateral incisor	Relative intrusion	4038	3180	2055	3760
	Labial displacement of the incisal edge	3107	1133	2426	4388
	Absolute intrusion	1410	722	100	533

along with some degree of labial tipping is acceptable, the first model of force application can be suggested. The second model represented the best combination of intrusion with a minimal labial tipping of the crown of the incisors. Hence, in clinical situations in which the minimal labiolingual displacement is desirable, this model can be suggested. Midline deviation to the screw side was not mentioned. The fourth model is the least acceptable model of force application since it provides the maximum proclination of the incisors and some degree of absolute intrusion. The third model which is a common method of force application in clinical practice, produced the minimum absolute intrusion, but was acceptable regarding the degree of labial tipping of the incisors.

#### Acknowledgment

The authors of the manuscript would like to thank Shiraz Orthodontic Research Center for providing financial support for this study. This manuscript has been extracted from the Postgraduate thesis of Dr. Ali Najafi at the department of Orthodontics of Shiraz University of Medical Sciences.

#### Conflict of Interest

The authors of this manuscript certify that they have no conflict of interest regarding this research.

#### References

- [1] Nanda R, Kuhlberg A. Management of deep overbite malocclusion In: Nanda R, editor. Biomechanics and esthetic strategies in clinical orthodontics. 1st ed. Elsevier: St. Louis; 2005. p. 131-155.
- [2] Burstone CR. Deep overbite correction by intrusion. *Am J Orthod.* 1977; 72: 1-22.
- [3] Hans MG, Kishiyama C, Parker SH, Wolf GR, Noachtar R. Cephalometric evaluation of two treatment strategies for deep overbite correction. *Angle Orthod.* 1994; 64: 265-274.
- [4] Melsen B. Tissue reaction following application of extrusive and intrusive forces to teeth in adult monkeys. *Am J Orthod.* 1986; 89: 469-475.
- [5] Casco JS, Eberle KM, Hoppens BJ. Treatment of a dental deep bite in a patient with vertical excess and excessive gingival display. *Am J Orthod Dentofacial Orthop.* 1989; 96: 1-7.
- [6] Dake ML, Sinclair PM. A comparison of the Ricketts and Tweed-type arch leveling techniques. *Am J Orthod Dentofacial Orthop.* 1989; 95: 72-78.
- [7] DeVincenzo JP, Winn MW. Maxillary incisor intrusion and facial growth. *Angle Orthod.* 1987; 57: 279-289.
- [8] Engel G, Cornforth G, Damerell JM, Gordon J, Levy P, McAlpine J, et al. Treatment of deep-bite cases. *Am J Orthod.* 1980; 77: 1-13.
- [9] Nanda R, Marzban R, Kuhlberg A. The Connecticut Intrusion Arch. *J Clin Orthod.* 1998;32: 708-715.
- [10] Shroff B, Lindauer SJ, Burstone CJ, Leiss JB. Segmented approach to simultaneous intrusion and space closure: biomechanics of the three-piecebase arch appliance. *Am J Orthod Dentofacial Orthop.* 1995; 107: 136-143.
- [11] Weiland FJ, Bantleon HP, Droschl H. Evaluation of continuous arch and segmented arch leveling techniques in adult patients--a clinical study. *Am J Orthod Dentofacial Orthop.* 1996; 110: 647-652.
- [12] Costa A, Raffaini M, Melsen B. Miniscrews as orthodontic anchorage: a preliminary report. *Int J Adult Orthodon Orthognath Surg.* 1998; 13: 201-209.
- [13] Creekmore TD, Eklund MK. The possibility of skeletal anchorage. *J Clin Orthod.* 1983;17: 266-269.
- [14] Gray JB, Steen ME, King GJ, Clark AE. Studies on the efficacy of implants as orthodontic anchorage. *Am J Orthod.* 1983; 83: 311-317.
- [15] Kokich VG. Managing complex orthodontic problems: the use of implants for anchorage. *Semin Orthod.* 1996; 2: 153-160.
- [16] Turley PK, Kean C, Schur J, Stefanac J, Gray J, Hennes J, et al. Orthodontic force application to titanium endosseous implants. *Angle Orthod.* 1988; 58: 151-162.
- [17] Carrillo R, Buschang PH, Opperman LA, Franco PF, Rossouw PE. Segmental intrusion with mini-screw implant anchorage: a radiographic evaluation. *Am J Orthod Dentofacial Orthop.* 2007; 132: 576.e1-6.
- [18] Ohnishi H, Yagi T, Yasuda Y, Takada K. A mini-implant for orthodontic anchorage in a deep overbite case. *Angle Orthod.* 2005; 75: 444-452.
- [19] Polat-Ozsoy O, Arman-Ozcirpici A, Veziroglu F. Miniscrews for upper incisor intrusion. *Eur J Orthod.* 2009; 31: 412-416.
- [20] Polat-Özsoy Ö, Arman-Özçırpıcı A, Veziroğlu F, Çetinşahin A. Comparison of the intrusive effects of miniscrews and utility arches. *Am J Orthod Dentofacial Orthop.* 2011; 139: 526-532.



- [21] Lee KJ, Park YC, Hwang CJ, Kim YJ, Choi TH, Yoo HM, et al. Displacement pattern of the maxillary arch depending on miniscrew position in sliding mechanics. *Am J Orthod Dentofacial Orthop.* 2011; 140: 224-232.
- [22] Tanne K, Sakuda M, Burstone CJ. Three-dimensional finite element analysis for stress in the periodontal tissue by orthodontic forces. *Am J Orthod Dentofacial Orthop.* 1987; 92: 499-505.
- [23] Farah JW, Craig RG, Sikarskie DL. Photoelastic and finite element stress analysis of a restored axisymmetric first molar. *J Biomech.* 1973; 6: 511-520.
- [24] Çifter M, Saraç M. Maxillary posterior intrusion mechanics with mini-implant anchorage evaluated with the finite element method. *Am J Orthod Dentofacial Orthop.* 2011; 140: e233-e241.
- [25] Cattaneo PM, Dalstra M, Melsen B. The finite element method: a tool to study orthodontic tooth movement. *J Dent Res.* 2005; 84: 428-433.
- [26] Jeon PD, Turley PK, Moon HB, Ting K. Analysis of stress in the periodontium of the maxillary first molar with a three-dimensional finite element model. *Am J Orthod Dentofacial Orthop.* 1999; 115: 267-274.
- [27] Kamble RH, Lohkare S, Hararey PV, Mundada RD. Stress distribution pattern in a root of maxillary central incisor having various root morphologies: a finite element study. *Angle Orthod.* 2012; 82: 799-805.
- [28] Poppe M, Bourauel C, Jäger A. Determination of the elasticity parameters of the human periodontal ligament and the location of the center of resistance of single-rooted teeth a study of autopsy specimens and their conversion into finite element models. *J Orofac Orthop.* 2002; 63: 358-370.
- [29] Vollmer D, Bourauel C, Maier K, Jäger A. Determination of the centre of resistance in an upper human canine and idealized tooth model. *Eur J Orthod.* 1999; 21: 633-648.
- [30] Baumgaertel S, Hans MG. Buccal cortical bone thickness for mini-implant placement. *Am J Orthod Dentofacial Orthop.* 2009; 136: 230-235.
- [31] Proffit WR. Mechanical principles in orthodontic force control. In: Proffit WR, Fields HW, Sarver DM, editors. *Contemporary orthodontics.* 4th ed. St. Louis: Mosby; 2007. p. 388.
- [32] Lindhe J, Karring T, Araujo M. The anatomy of periodontal tissue. In: Lindhe J, Plang N, editors. *Clinical periodontology and implant dentistry.* 5th ed. St. Louis: Blackwell Munksgaard; 2008. p. 7.
- [33] Lim JE, Lee SJ, Kim YJ, Lim WH, Chun YS. Comparison of cortical bone thickness and root proximity at maxillary and mandibular interradicular sites for orthodontic mini-implant placement. *Orthod Craniofac Res.* 2009; 12: 299-304.
- [34] Reimann S, Keilig L, Jäger A, Bourauel C. Biomechanical finite-element investigation of the position of the centre of resistance of the upper incisors. *Eur J Orthod.* 2007; 29: 219-224.
- [35] Dermaut LR, Vanden Bulcke MM. Evaluation of intrusive mechanics of the type "segmented arch" on a macerated human skull using the laser reflection technique and holographic interferometry. *Am J Orthod.* 1986; 89: 251-263.
- [36] Melsen B, Agerbaek N, Eriksen J, Terp S. New attachment through periodontal treatment and orthodontic intrusion. *Am J Orthod Dentofacial Orthop.* 1988; 94: 104-116.
- [37] Türk T, Elekdag-Türk S, Dinçer M. Clinical evaluation of the centre of resistance of the upper incisors during retraction. *Eur J Orthod.* 2005; 27: 196-201.
- [38] Vanden Bulcke MM, Dermaut LR, Sachdeva RC, Burstone CJ. The center of resistance of anterior teeth during intrusion using the laser reflection technique and holographic interferometry. *Am J Orthod Dentofacial Orthop.* 1986; 90: 211-220.
- [39] Harris DA, Jones AS, Darendeliler MA. Physical properties of root cementum: part 8. Volumetric analysis of root resorption craters after application of controlled intrusive light and heavy orthodontic forces: a microcomputed tomography scan study. *Am J Orthod Dentofacial Orthop.* 2006; 130: 639-647.
- [40] Reitan K. Biomechanical principles and reaction. In: Graber TM, Swain BF, editors. *Orthodontics, current principles and techniques.* 1st ed. Mosby: St. Louis; 1985. p. 92-101.
- [41] Vikram NR, Senthil Kumar KS, Nagachandran KS, Hashir YM. Apical stress distribution on maxillary central incisor during various orthodontic tooth movements by varying cemental and two different periodontal ligament thicknesses: a FEM study. *Indian J Dent Res.* 2012; 23: 213-220.