



Tehran University of Medical
Sciences Publication
<http://tums.ac.ir>

Iran J Parasitol

Open access Journal at
<http://ijpa.tums.ac.ir>



Iranian Society of Parasitology
<http://isp.tums.ac.ir>

Original Article

Designing a Recombinant Multi-Epitope Antigen of *Echinococcus granulosus* to Diagnose Human Cystic Echinococcosis

Aliyar MIRZAPOUR^{1,2}, Seyyed Javad SEYYED TABAEI³, Mojgan BANDEHPOUR^{4,5},
Ali HAGHIGHI³, *Bahram KAZEMI^{3,4}

1. Department of Medical Parasitology and Mycology, International Branch of Shahid Beheshti University of Medical Sciences, Tehran, Iran
2. Department of Parasitology and Mycology, School of Medicine, Mashhad Branch, Islamic Azad University, Mashhad, Iran
3. Department of Medical Parasitology and Mycology, School of Medicine, Shahid Beheshti University of Medical Sciences, Tehran, Iran
4. Cellular and Molecular Biology Research Center, Shahid Beheshti University of Medical Sciences, Tehran, Iran
5. Department of Biotechnology, School of Advanced Technologies in Medicine, Shahid Beheshti University of Medical Sciences, Tehran, Iran

Received 19 Jan 2019
Accepted 22 Apr 2019

Keywords:
Multi-epitope;
Echinococcus granulosus;
Hydatidosis;
ELISA

***Correspondence
Email:**
kazemi@sbmu.ac.ir

Abstract

Background: Cystic echinococcosis can cause severe disease and probable death in humans. Epitopes of its antigens play a key role in the sensitivity and specificity of immunodiagnostic tests.

Methods: Epitope prediction software programs predict the most antigenic linear B-cell epitopes of AgB (8 kD), Ag5, and Ag95. Six such epitopes were predicted and connected by “Gly-Ser” linker and synthesized. The purity of the concentrated recombinant multi-epitope protein was assessed by 15% SDS-PAGE. Overall, 186 serum samples were collected from the Loghman Hakim Hospital and different laboratories, Tehran, Iran, from July 2016 to February 2017. Patients infected with hepatic hydatid cysts, patients infected by other parasites and viruses, and healthy individuals were used to detect the anti-CE IgG using recombinant multi-epitope protein.

Results: Forty-one samples out of 43 cases of hydatidosis were diagnosed correctly as positive, and two were negative. In addition, six negative cases of healthy individual group were diagnosed as positive and negative with rMEP-ELISA and the commercial kit, respectively. Therefore, these six samples were considered as false positive using our method. In addition, a diagnostic sensitivity of 95.3% (95% CI, 84.19% to 99.43%) and a specificity of 95.0% (95% CI, 89.43% to 98.14%) were obtained using optimum cutoff value (0.20). The sensitivity and specificity of the commercial kit was 100%.

Conclusion: Our findings showed high diagnostic accuracy of the ELISA test using the developed recombinant protein, which encourages the use of this recombinant multi-epitope protein for rapid serological diagnosis of hydatidosis.

Introduction

Cystic echinococcosis (CE) is a zoonotic disease caused by a parasite of the class Cestodes, genus *Echinococcus*. Canids are the only host for the adult worm of *E. granulosus*. Adult tapeworms attach to the intestinal epithelium and sexually reproduce towards the development of eggs (1). Natural intermediate hosts, such as humans, cattle, and sheep, contract the infection by ingesting the eggs. Liver is the major site of cystic hydatid (50%-70% of all cysts), but it can also develop in lungs (20%-30%) and sometimes in spleen, kidneys, bone, brain, and rarely in other organs (2, 3).

CE can cause severe disease and probable death in humans as well as financial burden of late diagnosis, treatment costs, and livestock-associated losses (4, 5). CE is endemic in Asia, Africa, Eastern Europe, South and Central America, the Middle East, Australia, and New Zealand (6). In endemic areas, the incidence rate of Human CE has been recorded at >50 per 100,000 persons/year, and a 10%-50% prevalence rate in parts of Peru, Argentina, East Africa, central Asia, and China (7, 8). The clinical manifestations of CE are not critically pathognomonic; hence, searching for an accurate diagnostic method is vitally important (3, 9).

Ultrasonography (US), computerized tomography (CT), and magnetic resonance imaging (MRI) are the main primary diagnostic methods for CE (3, 10). US is used for the diagnosis of both hepatic and extrahepatic CE (11), while CT is used to detect the presence of daughter cysts and calcification in the cyst wall (12). MRI reveals the structures of the CE (8). These diagnostic tests are not precise enough and must be confirmed by a specific technique. Serological tests, based on the detection of antibodies in the patient's serum, are sensitive in the diagnosis of most of the pathogenic infections (13). Nowadays, some sensitive serodiagnostic assays such as ELISA, immunoblot (IB), and indirect immunofluo-

rescent antibody test (IFA) have replaced some old serological methods (14). For the detection of infectious diseases, e.g. CE, ELISA is recommended as a high-sensitivity assay (15).

The standardization of antigenic preparations is the major complication in serodiagnosis of CE. Hence, it is necessary to use an appropriate source of antigenic material derived from different growing phases of *E. granulosus* (16). According to previous researches, AgB (8 kDa), Ag5, and Ag95 lipoproteins are the most important antigens for serodiagnosis of CE (17-20).

The sensitivity and specificity of immunodiagnostic tests depend on the antigenicity and conservation of epitopes of antigens, respectively. The prediction of immunogenic epitopes on proteins' surface is essential to design an immunodiagnostic test. Continuous linear epitopes predicted by epitope prediction procedures utilize protein sequences as input data. Amino acid properties, comprising immunoinformatic analysis and prediction of B-cell epitopes, form the basis of prediction methods (21, 22). Bioinformatics approaches comprise a new technique to search for microorganism vaccines and antigens used to diagnose infections.

In this research, we predicted B-cell epitopes of AgB (8 kDa), Ag5, and Ag95 using bioinformatics approaches and produced a recombinant protein, used for serological diagnosis of *E. granulosus*. The recombinant protein was purified, and its diagnostic efficacy was assessed using ELISA and immunoblotting.

Materials and Methods

Computer modeling prediction of immunodominant epitopes and construction of rMEP expression plasmid

The sequences of amino acids of the AgB (8 kDa), Ag5, and Ag95 of *E. granulosus* were re-

trieved from the National Center for Biotechnology Information (NCBI) Database. IEDB, Bepipred (<http://www.imtech.res.in/raghava/>), and ABCpred (<http://www.imtech.res.in/raghava/abcpred>) are the epitope prediction software programs, used to predict the most antigenic linear B-cell epitopes of the fusion protein. Finally, BLASTP were used to prove the presence or absence of predicted epitopes. Briefly, six predicted B-cell epitopes of the antigens were connected using a “Gly-Ser” linker resulting in recombinant multi-epitope peptide (rMEP), and a His-tag was added at the end of the sequence. The sequence was synthesized by Gene Ray Biotech (Shanghai, China). It was then cloned into the bacterial expression vector pET-26b to produce recombinant expression plasmid pET-MEP.

Expression of recombinant multi-epitope polypeptide

E. coli strain BL21 (DE3) was transformed with the pET-MEP and cultured in Luria Bertani broth containing 100 µg/ml ampicillin. The transformant was cultured overnight at 37 °C in a shaker incubator at 160 rpm. Afterward, it was subcultured into LB medium and incubated at 37 °C in a shaker incubator at 200 rpm. The logarithmic-phase culture (at OD₆₀₀ = 0.6) was induced by 1 mM isopropyl-β-D-thiogalactopyranoside (IPTG) for 2, 6, and 12 h. Afterwards, un-induced and induced bacteria (of each time point) were used to analyze rMEP expression using SDS-PAGE. The gel

was stained with Coomassie brilliant blue R-250. The secondary structure of the proteins was assessed using the SOPMA online software (https://npsa-prabi.ibcp.fr/cgi-bin/npsa_automat.pl?page=/NPSA/npsa_sopma.html). The B-cell epitopes of the three proteins were selected based on Emini surface accessibility, Kolaskar, Tongaonkar antigenicity, and Parker hydrophilicity (IEDB, BCEPRED, and ABCpred). Epitopes identified from AgB (8 kD), Ag5, and Ag95 (named Eg AgB_EP1, Eg Ag5_EP1, Eg Ag5_EP2, EgAg5_EP3, Eg Ag5_EP4, and Eg Ag95_EP1 respectively) were used to construct a multi-epitope peptide (Table 1). The tertiary structure of the rMEP was predicted by pyMOL software (Fig. 1).

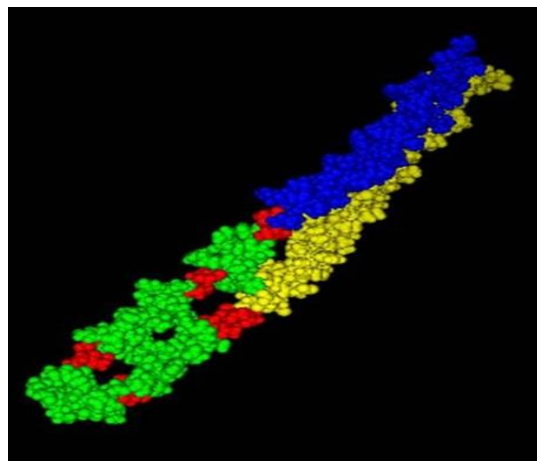


Fig. 1: Predicted tertiary structure of the rMEP. This image was created using pyMOL software

Table 1: predicted B-cell Epitopes of Eg AgB (8 kD), Eg Ag5, and Eg Ag95 using three different bioinformatics applications

Gene	Predicted epitope	Sequence	Position
<i>Eg AgB</i> (8 kDa)	Eg AgB – EP1	LIMRKLGEIRDFFRSD	30 - 89
		PLGQKLAALGRDLTA	
		ICQKLQKLVHEVLKK YVKDLEEEEDDDSK	
<i>Eg Ag5</i>	Eg Ag5 - EP1 Eg Ag5 - EP2 Eg Ag5 - EP3 Eg Ag5 - EP4	DAEAEERGEYESER	169 - 182
		EGTRTRNEQESDH	283 - 295
		EKSRPISKPRRRRPT	359 - 373
		WERRPQRPTS	386 - 395
<i>Eg Ag95</i>	Eg Ag95 - EP1	KGRGIETKTTESPLR	20 - 63
		KHFSLTLVGSQGIRL	
		SWEVQHLPSLQGTN	

Polypeptide purification by affinity chromatography

His-tag was added at the end of the recombinant. A single colony was preinoculated in LB medium and sub-cultured. Afterward, the culture ($OD_{600} = 0.6$) was induced using IPTG (1mM) for 6 h at 37 °C. The cells were centrifuged at 12,000 rpm for 10 min at 5 °C. The pellet was then suspended and lysed in a lysis buffer (50 mM NaH_2PO_4 -300mM NaCl, pH=8) containing 1 mM PMSF protease (Roche Applied Science) (23). The cell suspension was lysed by sonication on ice (power 400 W, 20 min, ultrasonic 3 sec, pause 5 sec for a loop), and the lysate was centrifuged at 7000 g for 30 min at 4 °C. The supernatant was then collected for purification. The supernatant was slightly shaken with 1 ml of Ni-nitrilotriacetic acid (NTA) resin (Novagen, USA). After the flow-through was collected, the column was washed three times with 10 ml wash buffer (50 mM NaH_2PO_4 -300mM NaCl, pH 8), and the recombinant protein was eluted in 1 ml elution buffer (50 mM Tris, 0.5 M NaCl, and 250 mM imidazole). Bradford method was used to measure the concentration of purified recombinant protein, and the purity of the concentrated rMEP was assessed by 15% SDS-PAGE.

Confirmation of polypeptide by Immunoblotting

Electrophoresed protein was transferred on nitrocellulose membrane (Whatman, USA). The membrane was blocked with 5% skimmed milk in phosphate buffered saline (PBS) (pH 7.4) containing 0.1% Tween 20 (PBS-T) overnight at 4 °C. The membrane was washed several times with TBST (Tris-Buffered Saline-Tween 20), treated with His-tag monoclonal antibody (diluted 1:10000 in 0.05% Tween-PBS) (Conjugated) (Dako Cytomation, Glostrup, Denmark), for one hour at room temperature, and then washed repeatedly.

The membrane was incubated with phosphatase substrate solution containing 0.3 gr/L

nitroblue tetrazolium and 0.15 gr/L 5-bromo-4-chloro-3-indolylphosphate (NBT/BCIP) (PerkinElmer Life Sciences, Gaithersburg, MD, USA). Finally, the membrane was washed four times using distilled water to stop the reaction.

Samples

Overall, 186 serum samples from three different clinical groups were collected; 1) 43 serum samples were collected from patients infected with hepatic hydatid cysts. The samples were confirmed using pathological methods after surgery; 2) 23 serum samples of patients infected by other parasites and viruses, including *Toxocara* (three samples), *Toxoplasma* (10 samples), *Taenia* (one sample), *Leishmania* (three samples), *Trichinella* (one sample), Malaria (one sample), HBsAg (two samples), HCV (two samples); and 3) 120 serum samples of healthy individuals were collected from the Loghman Hakim Hospital and different laboratories, Tehran, Iran, from July 2016 to February 2017. Non-CE patients and healthy donors were confirmed by total IgG commercial ELISA kit (Medizinische labor diagnostic AG, Germany Lot: E170424BW). The anti-CE antibody of all samples was assessed separately by both rMEP-ELISA (ELISA assay using our recombinant antigen) and the commercial ELISA kit, and the specificity and sensitivity of both assays were compared.

Detailed, informed consents were taken from all patients before participation in the study. The current experiment meets complete standards of the ethical conduct of research complied with the World Medical Association Declaration of Helsinki regarding ethical conduct of research involving human subjects and was approved by the Ethics Committee of Shahid Beheshti University of Medical Sciences.

For ELISA, several numbers of plates were pre-coated with 1 µg/well of the rMEP protein in carbonate buffer. Wells were washed five times using PBS supplemented with 0.05% Tween (PBS-T). The wells were

blocked overnight. Using 200 μ L of blocking solution (BSA1%, 5% skimmed milk) at 4 °C. The wells were washed again, serum samples were added at 1:100 dilutions in dilution buffer (PBS-T, 0.25% BSA, 5% skim milk), incubated at 37 °C for 1 h, and then washed as mentioned. HRP-conjugated anti-human IgG antibody (Dako Cytomation, Glostrup, Denmark) (diluted 1:10000, stock concentration 13 g/L) was added and incubated at 37 °C for 1 h. Then, the wells were washed, and, 100 μ l of substrate solution (3, 3', 5, 5'-tetramethylbenzidine (TMB) and H₂O₂) was added to each well, and the plate was incubated for 15 min at room temperature. Totally, 50 μ l of 2 N H₂SO₄ was added as stopping solution, and optical density (ODs) was read at 450 nm using ELISA reader (Anthos 2020, USA). All tests were performed in duplicate. The sera infected with other microorganisms were used to check cross-reactions.

Statistical analysis

The cut-off value for positive reactions was calculated by mean \pm 2 SD of the absorbance of the 120 healthy individuals' samples. The sensitivity was plotted against the level of one

minus the specificity at each cutoff point on Receiver-Operating Characteristic (ROC) curve. Positive and negative serum samples were used to build the ROC curve. The zone under the ROC curve (AUC) is a standard amount of the accuracy of a diagnostic test. (SPSS ver. 19.0, Chicago, IL, USA) was used for statistical analysis. *P*-value<0.05 was considered as statistically significant.

Results

Identification and characterization of immunodominant epitopes

GenBank

(<https://www.ncbi.nlm.nih.gov/genbank/>) was used to determine the nucleotide sequences of Ag5 (JF970202), antigen B (DQ835667), and EG95 (JF829212). Primary protein structure and the putative protein sequence of Ag B subunit, Ag 5, and Eg 95 were analyzed by ExPasy tools (<http://web.expasy.org/protparam/>).

The “Gly-Ser” linker was used to join the adjacent epitopes (Fig. 2).



Fig. 2: Amino acid sequence of the recombinant polypeptide in FASTA format Red sequences indicate “Gly-Ser” linker

The artificial multi-epitope gene was successfully synthesized by Gene Ray Biotech (Shanghai, China); PCR technique confirmed the construction of these plasmids, then transformed into *E. coli* BL21 (DE3) cells and expressed. Afterward, the induced cells were sonicated and analyzed by SDS-PAGE and stained with Coomassie brilliant blue. An expected band demonstrating the recombinant

product was achieved (Fig.3a). Ni-NTA affinity purification was used, and the purified products were analyzed by SDS-PAGE (Fig. 3b).

Moreover, western blot analysis confirmed the successful expression of the approximately 61 kDa protein, which was probably a dimer of the mentioned protein (Fig. 3c).

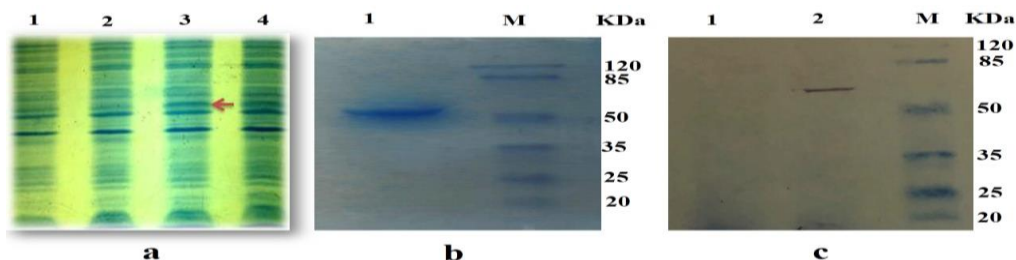


Fig. 3: Preparation and identification of recombinant protein. **a)** SDS-PAGE of rMEP-induced expression with 1.0 mM IPTG for different times: lane 1, BL21 (negative control); lane 2, supernatant of IPTG-induced cells for 2 h; lane3, supernatant of IPTG-induced cells for 6 h; lane 4, supernatant of IPTG-induced cells for 12 h. **b)** The protein purification. **c,** SDS-PAGE of rMEP purification (M, marker; Lane 1, rMEP). **c)** Western blotting analysis: (M, marker; Lane 1, BL21 (negative control); Lane 2, purified recombinant protein)

ELISA using rMEP

Indirect ELISA assay was performed on 186 serum samples by both rMEP-ELISA and Euroimmun commercial kit. A dot plot diagram outlined the OD values of these samples (Fig. 4a). Based on the ROC analysis, AUC for this test was 0.9964 (95% confidence interval (CI), 0.9914 to 1.001). In addition, a diagnostic sensitivity of 95.3% (95% CI, 84.19% to 99.43%) and a specificity of 95.0% (95% CI, 89.43% to 98.14%) were obtained from an optimum cut-off value (0.20). According to this cutoff value, 41 samples of 43 hydatidosis cases were diagnosed correctly as positive and two were negative. In addition, six negative cases of healthy individual group were diagnosed as positive and negative with rMEP-ELISA and the commercial kit, respectively. Therefore, these six samples were considered as false positive

using our method. Additionally, all the healthy control samples were correctly diagnosed. Likewise, the commercial kit was utilized and compared with the fusion protein. The dot plot diagram is referred to in Fig. 4c, and the ROC curve is in Fig. 4d. AUC for the commercial kit was 1.000 (95% CI, 1.000 to 1.000), the sensitivity and specificity were 100% (95% CI, 91.78% to 100%) and 100% (95% CI, 96.97% to 100%), respectively, obtained from an optimum cutoff value (0.8). However, with the cutoff value, 43 of 43 hydatidosis cases were correctly diagnosed, including three healthy individuals diagnosed as borderline. We also have a cross-table with absolute numbers of positive and negative samples with these cutoff values. The positive/negative predictive values are also indicated (Table 2).

Table 2: Comparison of the characteristics of rMEP-ELISA assay and the commercial ELISA kit

	Cutoff value	Positive		Negative		PPV (%)	NPV (%)	Sensitivity (%)	Specificity (%)	P-value	Kappa
		TP	FN	TN	FP						
rMEP ELISA	$\geq 0.2^a$	41	2	114	6	87.2	98.2	95.3	95.0	0.046	0.613
Commercial Kit	$\geq 0.8^b$	43	0	120	0	100	100	100	100		

TP, true positives; TN, true negatives; FP, false positives; FN, false negatives;

PPV, positive predictive value $(TP/TP + FP) \times 100$

NPV, negative predictive value $(TN/TN + FN) \times 100$

^acutoff value is calculated by rMEP ELISA

^bcutoff value is calculated by Commercial kit ELISA

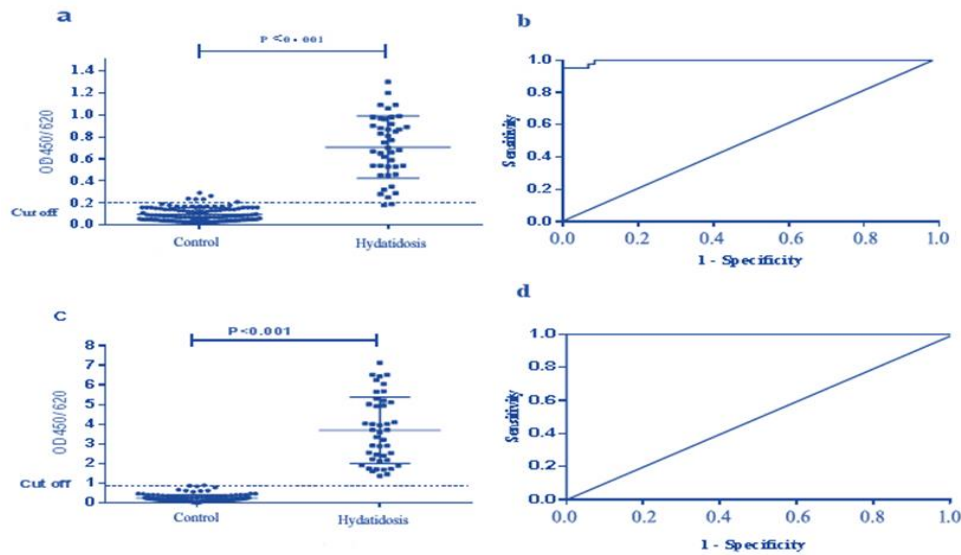


Fig. 4: ELISA analysis of serum samples. The analysis was performed after considering positive control serum samples with surgical positive hydatidosis (43 sera) and negative control sera from patients with other diseases and healthy individuals (120 sera). **a)** Dot plot of the rMEP IELISA assay. **b)** ROC analysis of rMEP IELISA assay results. **c)** Dot plot of the Commercial kit ELISA assay results. **d)** ROC analysis of Commercial kit ELISA assay results

Discussion

The management and treatment of CE with high quality essentially require the early detection of the infection. Immunodiagnostic assessments, especially ELISA, are applied to confirm the imaging techniques' results (24). Several antigens have been used for ELISA in primary immunodiagnosis, but there are some limitations such as the lack of suitable sensitivity and specificity and difficulties with the standardization (25). Additionally, cross-reactivity with the serum sample from other parasitic infections is another problem (26). So far, there has been no sensitive and specific technique for serodiagnosis of human cystic echinococcosis (27), and recombinant antigens may improve the quality of these tests (28).

Cyst fluid antigens, protoscolex and adult somatic antigens, protoscolex and adult excretory-secretory products, and oncosphere antigens are the widely used antigens in several studies. Nowadays, recombinant proteins, synthetic peptides, or combinations of well-

defined antigens are the targets of researchers in this field (29).

B-cell epitopes are the sites recognized by antibodies and are the bases of vaccines and immunodiagnostic tests. Bioinformatics methods can predict the B-cell epitopes based on the properties of 20 amino acids, but the rate of effective prediction is not suitable enough. Hence, to heighten the chance for correct decision, three different kinds of epitope prediction software such as IEDB, Bepipred, and ABCpred were used to predict B-cell epitope.

Ag B (Ag B1, Ag B2, Ag B3, Ag B4, and Ag B5), Ag5, and Ag95 have generally been used in serodiagnosis of human CE, but each of them has revealed some limitations. In the present study, the most immunogenic linear B-cell epitopes in these three epitopes were attached together by "Gly-Ser" linker and used to assess its efficacy in indirect ELISA test using a series of serum samples obtained from CE patients, non-CE patients, and

healthy individuals. The results were then compared with an approved commercial kit.

The result of AUC was 0.9964 (95% CI, 0.9914 to 1.001), which indicates our assay has high accuracy for CE diagnosis.

Recombinant proteins and peptides are more reliable for immunodiagnostic and vaccine purposes than natural antigens (30-32). Native AgB was more sensitive than recombinant AgB, with sensitivity of 80 and 68, respectively, but the specificity of recombinant AgB was more than native AgB (33). In a similar study, recombinant AgB had higher sensitivity and specificity than native AgB. The sensitivity and specificity of recombinant AgB were respectively 93% and 99%, and the sensitivity and specificity of native AgB were 60% and 93%, respectively (14). In contrast to these studies, the sensitivity and specificity of native AgB were less than those of recombinant AgB (34).

In Iran, recombinant antigen-ELISA, native Ag B-ELISA, and commercial ELISA kit were compared by another study (2017). The sensitivity and specificity of the recombinant antigen-ELISA, native antigen B-ELISA, and commercial kit were respectively 93% and 92%, 87% and 90%, and 97% and 95% (18). Compared to AgB, recombinant Ag5 and recombinant AgP had a higher rate of sensitivity and specificity than native antigens (35). In the present research, the diagnostic sensitivity and specificity were 95.3% and 95.0%, respectively. Our study showed that rMEP is sensitive and specific for designing immunodiagnostic tests, and it can be used for evaluation of vaccines. AUC for the commercial kit was 1.000, and both its sensitivity and specificity were 100%. The sensitivity and specificity of the commercial kit were more than our rMEP-ELISA, but the differences were not statistically significant ($P < 0.05$).

Conclusion

We assessed a newly established ELISA test with high diagnostic accuracy for human CE

diagnosis. However, assessments using a larger number of specific and cross-reactive serum samples must be done to approve its analytical specificity. In our study for the first time, a predicted recombinant protein consisting of *E. granulosus* B-cell epitopes of AgB (8 kDa), Ag5, and Ag95 was expressed and analyzed. Bioinformatics methods can help researchers in finding an immunogenic antigen for the improvement of immunodiagnostic tests. Furthermore, this bioinformatic approach can be used to develop antigens for the diagnosis of other infectious diseases.

Acknowledgements

This paper was extracted from Aliyar Mirzapour's Ph.D. thesis and supported financially by a grant from the Cellular and Molecular Biology Research Center of Shahid Beheshti University of Medical Sciences, Tehran, Iran (Grant No. 10511). The Authors would like to express their deep thanks to all Lab Staffs of the Parasitology, Immunology, Biochemistry, and Cellular and Molecular Biology Research Center of Shahid Beheshti University of Medical Sciences.

Conflict of interests

The authors declare that there is no conflict of interests.

References

1. McManus DP, Zhang W, Li J, Bartley PB. Echinococcosis. *Lancet*. 2003; 362(9392):1295-304.
2. Moro P, Schantz PM. Echinococcosis: a review. *Int J Infect Dis*. 2009; 13(2):125-33.
3. Sabzevari S, Badirzadeh A, Shahkaram R, Seyyedini M. Traumatic rupture of liver hydatid cysts into the peritoneal cavity of an 11-year-old boy: a case report from Iran. *Rev Soc Bras Med Trop*. 2017; 50(6):864-7.
4. Torgerson PR, de Silva NR, Fèvre EM et al. The global burden of foodborne parasitic dis-

- eases: an update. Trends Parasitol. 2014; 30(1):20-6.
5. Singh BB, Dhand NK, Ghatak S, Gill JP. Economic losses due to cystic echinococcosis in India: need for urgent action to control the disease. Prev Vet Med. 2014; 113(1):1-12.
 6. Valizadeh M, Haghpanah B, Badirzadeh A et al. Immunization of sheep against *Echinococcus granulosus* with protoscolex tegumental surface antigens. Vet World. 2017; 10(8):854-8.
 7. Craig P, Hegglin D, Lightowlers M et al. Chapter Two-Echinococcosis: Control and Prevention. Adv Parasitol. 2017; 96:55-158.
 8. Mandal S, Mandal MD. Human cystic echinococcosis: epidemiologic, zoonotic, clinical, diagnostic and therapeutic aspects. Asian Pac J Trop Med. 2012; 5(4):253-60.
 9. Budke CM, Casulli A, Kern P, Vuitton DA. Cystic and alveolar echinococcosis: Successes and continuing challenges. PLoS Negl Trop Dis. 2017; 11(4):e0005477.
 10. Marzouki A, Naam A, Abdulrazak S et al. Musculoskeletal *Echinococcus* infection as a rare first presentation of hydatid disease: case report. Patient Safety in Surgery. 2017; 11(1):21.
 11. Gharbi HA, Hassine W, Brauner M, Dupuch K. Ultrasound examination of the hydatid liver. Radiology. 1981; 139(2):459-63.
 12. Balik AA, Çelebi F, Başoğlu M et al. Intra-abdominal extrahepatic echinococcosis. Surg Today. 2001; 31(10):881-4.
 13. Grimm F, Maly FE, Lü J, Llano R. Analysis of specific immunoglobulin G subclass antibodies for serological diagnosis of echinococcosis by a standard enzyme-linked immunosorbent assay. Clin Diagn Lab Immunol. 1998; 5(5):613-6.
 14. Virginio V, Hernandez A, Rott M et al. A set of recombinant antigens from *Echinococcus granulosus* with potential for use in the immunodiagnosis of human cystic hydatid disease. J Clin Exp Immunol. 2003; 132(2):309-15.
 15. Sangaran A, Sundar SB, Latha BR. Antigen based detection of cystic echinococcosis in bufaloes using ELISA and Dot-EIA. J Parasit Dis. 2017; 41(1):128-30.
 16. Siles-Lucas M, Casulli A, Conraths F, Müller N. Laboratory diagnosis of *Echinococcus* spp. in human patients and infected animals. Adv Parasitol. 2017; 96:159-257.
 17. Pan W, Chen DS, Lu YJ et al. Bioinformatic prediction of the epitopes of *Echinococcus granulosus* antigen 5. Biomed Rep. 2017; 6(2):181-7.
 18. Savardashtaki A, Sarkari B, Arianfar F, Mostafavi-Pour Z. Immunodiagnostic Value of *Echinococcus Granulosus* Recombinant B8/1 Subunit of Antigen B. Iran J Immunol. 2017; 14(2):111-22.
 19. Hezarjaribi HZ, Fakhar M, Esboei BR et al. Serological evidence of human cystic echinococcosis and associated risk factors among general population in Mazandaran Province, northern Iran. Ann Med Surg (Lond). 2017; 18:1-5.
 20. Woollard DJ, Gauci CG, Heath DD, Lightowlers MW. Protection against hydatid disease induced with the EG95 vaccine is associated with conformational epitopes. Vaccine. 2000; 19(4):498-507.
 21. Ponomarenko JV, Van Regenmortel MH. B cell epitope prediction. Struct Bioinform. 2009:849-79.
 22. Blythe MJ, Flower DR. Benchmarking B cell epitope prediction: underperformance of existing methods. Protein Sci. 2005; 14(1):246-8.
 23. Pestka S, Rubinstein M. Protein purification process and product. Google Patents; 1981.
 24. Eckert J, Deplazes P. Biological, epidemiological, and clinical aspects of echinococcosis, a zoonosis of increasing concern. Clin Microbiol Rev. 2004; 17(1):107-35.
 25. Ortona E, Riganò R, Margutti P et al. Native and recombinant antigens in the Immunodiagnosis of human cystic echinococcosis. Parasite Immunol. 2000; 22(11):553-9.
 26. Leggatt G, Yang W, McManus D. Serological evaluation of the 12 kDa subunit of antigen B in *Echinococcus granulosus* cyst fluid by immunoblot analysis. Trans R Soc Trop Med Hyg. 1992; 86(2):189-92.
 27. Li J, Zhang W-B, Wilson M et al. A novel recombinant antigen for Immunodiagnosis of human cystic echinococcosis. J Infect Dis. 2003; 188(12):1951-60.
 28. Zhang W, Wen H, Li J et al. Immunology and Immunodiagnosis of cystic echinococcosis: an update. Clin Dev Immunol. 2011; 2012.
 29. Zhang W, Li J, McManus DP. Concepts in immunology and diagnosis of hydatid disease. Clin Microbiol Rev. 2003; 16(1):18-36.

30. Kordafshari S, Hosseini SH, Jalousian F et al. Evaluation of dot immunogold filtration assay (DIGFA) by recombinant protein EPC1 for anti-*Echinococcus granulosus* IgG antibody. Iran J Parasitol. 2015; 10(1):30-8.
31. Fleitas AL, Randall LM, Möller MN, Denicola A. Purification of a recombinant glutathione transferase from the causative agent of hydatidosis, *Echinococcus granulosus*. Biochem Mol Biol Educ. 2016; 44(1):28-37.
32. Lampe K, Gottstein B, Becker T et al. Immunization of rhesus macaques with *Echinococcus multilocularis* recombinant 14-3-3 antigen leads to specific antibody response. J Parasitol Res. 2017; 116 (1):435-9.
33. Lorenzo C, Ferreira HB, Monteiro KM et al. Comparative analysis of the diagnostic performance of six major *Echinococcus granulosus* antigens assessed in a double-blind, randomized multicenter study. J Clin Microbiol. 2005; 43(6):2764-70.
34. Rott MB, Fernández V, Farias S et al. Comparative analysis of two different subunits of antigen B from *Echinococcus granulosus*: gene sequences, expression in *Escherichia coli* and serological evaluation. Acta Trop. 2000; 75(3):331-40.
35. Carmena D, Benito A, Eraso E. [Recent advances in the immunodiagnosis of human cystic echinococcosis]. Enferm Infecc Microbiol Clin. 2007; 25(4):263-9.