

Original Article

Dynamics of Transgenic *Enterobacter cloacae* Expressing Green Fluorescent Protein-Defensin (GFP-D) in *Anopheles stephensi* Under Laboratory Condition

Hossein Dehghan¹, *Mohammad Ali Oshaghi¹, *Seyed Hassan Moosa-Kazemi¹, Bagher Yakhchali², Hassan Vatandoost^{1,3}, Naseh Maleki-Ravasan⁴, Yavar Rassi¹, Habib Mohammadzadeh⁵, Mohammad Reza Abai^{1,3}, Fatemeh Mohtarami¹

¹Department of Medical Entomology and Vector Control, School of Public Health, Tehran University of Medical Sciences, Tehran, Iran

²Department Industrial and of Environmental Biotechnology, National Institute of Genetic Engineering and Biotechnology, Tehran, Iran

³Department of Chemical Pollutants and Pesticides, Institute for Environmental Research, Tehran University of Medical Sciences, Tehran, Iran

⁴Malaria and Vector Research Group, Biotechnology Research Center, Pasteur Institute of Iran, Tehran, Iran

⁵Department of Parasitology and Mycology, Faculty of Medicine, Urmia University of Medical Sciences, Urmia, Iran

(Received 6 Jan 2017; accepted 23 May 2017)

Abstract

Background: *Enterobacter cloacae* bacterium is a known symbiont of the most *Anopheles* gut microflora and nominated as a good candidate for paratransgenic control of malaria. However, the population dynamics of this bacterium within *An. stephensi* and its introduction methods to the mosquitoes have not yet been explored.

Methods: *Enterobacter cloacae* subsp. *dissolvens* expressing green fluorescent protein and defensin (GFP-D) was used to study transstadial transmission and the course of time, larval habitat, sugar, and blood meal on dynamics of the bacterium in the mosquito life stages in the laboratory condition. The bacterial quantities were measured by plating samples and counting GFP expressing colonies on the Tet-BHI agar medium.

Results: The *E. cloacae* population remained stable in sugar bait at least for eleven days whereas it was lowered in the insectary larval habitat where the bacteria inadequately recycled. The bacterium was weakly transmitted transstadially from larval to adult stage. The bacterial populations increased smoothly and then dramatically in the guts of *An. stephensi* following sugar and blood meal respectively followed by a gradual reduction over the time.

Conclusion: *Enterobacter cloacae* was highly stable in sugar bait and increased tremendously in the gut of female adult *An. stephensi* within 24h post blood meal. Sugar bait stations can be used for introduction of the transgenic bacteria in a paratransgenic approach. It is recommended to evaluate the attraction of sugar bait in combination with attractive kairomones as well as its stability and survival rate in the semi-field or field conditions.

Keywords: Bacterial dynamic, *Enterobacter cloacae*, *Anopheles stephensi*, Paratransgenesis

Introduction

Malaria is a mosquito borne disease considered as an important threat to public health in tropical and semi-tropical areas of the world. Although Iran currently is in elimination phase and malaria cases are significantly reduced, the disease is still considered a serious health concern, mostly in the south and southeast

corner of the country (1-3).

In the southern regions of the country there are six *Anopheles* mosquito vectors including *Anopheles stephensi*, *An. culicifacies* s.l, *An. dthali*, *An. fluviatilis* s.l, *An. superpictus* s.l and *An. pulcherrimus* (4-12). However, *An. stephensi* has been considered the main ma-

alaria vectors in Iran (13-15). This species has shown a wide range of susceptibility/resistant to various insecticides in Iran (16-20). Currently, this species is resistant to lambda cyhalothrin and cyfluthrin and susceptible to etofenprox, and permethrin and candidate of resistant to deltamethrin in the country (21). *Anopheles stephensi* is one of the most important malaria vectors in Middle East and Indian subcontinent regions and its resistance to organochlorides, organophosphates, carbamates and pyrethroids insecticides have been widely reported in these regions (22-24).

Emergence of insecticide resistant mosquitoes plus the emergence of drug-resistant in the parasites highlights the needs for alternative strategies for sustainable malaria control. As an alternative to chemical insecticides, paratransgenesis depends on engineered symbiotic microorganisms particularly bacteria of malaria vectors to supply molecules that can kill *Plasmodium* inside the mosquito gut and or inhibit pathogen transmission (25, 26). Transmission of the *Plasmodium* parasite is strongly dependent on completion of the parasite life cycle in the mosquito vector since entering to midgut, across the peritrophic membrane (PM), midgut epithelium, salivary glands and transmitted through saliva to new host. The most bottleneck during the development of *Plasmodium* parasite occurs in ookinete stage. It could be considered as the main target for control of parasite in mosquito vectors (27-31).

Some known factors involved in creating parasite bottleneck, including gut digestive enzymes, intestinal microbial flora, and the mosquito's immune response. Microflora performs vital role in preventing the development of pathogens. This effect exerts directly by proliferation of bacteria after blood meal simultaneously with ookinete stage of *Plasmodium*. Besides, indirect effects on the survival of *Plasmodium* parasite are applied by inducing the expression of anti-microbial genes against the bacteria (32-38). Accordingly, bac-

terial symbionts are genetically modified to express toxic peptides against pathogens, can be considered as an alternative approach for disease control (39). This strategy, commonly named paratransgenesis (40), requires several steps of research on the biology of vectors and vector symbionts and its evaluation in the laboratory and field conditions (41-43).

The midgut bacterial flora of wild-caught mosquitoes is very dynamic and significant fluctuations depending on the stage of life, nutrients and the physiological age (31, 44). Population structure of symbiotic bacteria is considerably changed post blood meal and gram-negative bacteria will be dominant and could survive in harsh condition of midgut with digestive enzymes (31). There are scattered studies on insect gut microflora (15, 45, 46 and references herein) and still remained some questions in relation to species composition, stability as well as their acquisition of microbiota (47-49). Punpuni et al. (1996) (33) reported at least nine species of cultivable midgut bacteria with varied composition of *An. stephensi*, *An. gambiae* and *An. albimanus*. In the same study, variety composition of midgut bacteria flora was found in *An. gambiae* and *An. funestus* and some *Anopheles* mosquitoes (49-59).

A few of mosquito microflora able to pass from larvae to adult stages because of the differences between the larval (Aquatic) and adults (Terrestrial) habitats (41, 44). Some bacteria are able to colonize in the malpighian tubules and transstadially pass from larvae to adult and presumably remain for long duration in the female gut (15). Therefore, such symbiotic bacteria added to the diet of adult mosquitoes (60). *Enterobacter cloacae* bacterium is a species of gram-negative, facultative anaerobic, rod-shaped bacteria belonging to Gammaproteobacteria and Enterobacteriaceae family. The bacteria species limited the development of *Plasmodium berghei* and *P. falciparum* by stimulate the immune system of *An. stephensi* and increases the

expression of immune responses compounds such as serine protease inhibitors (SRPN6) (31). *Enterobacter cloacae* bacterium was found as the microflora of *An. stephensi* (57). Gonzalez-Ceron et al. (51) reported *E. cloacae* restricted the *P. vivax* development in midgut of *An. albimanus*. The bacterium also was reported from *Culex tarsalis* (61), *Psorophora columbiae* (62), *Aedes triseriatus* (62) and *Ae. albopictus* and *Ae. aegypti* (63). Due to the ability of *E. cloacae* to direct and indirect control of *Plasmodium* parasites, these bacteria could be introduced as a candidate for paratransgenesis approach against the malaria parasite. Maleki-Ravasan et al. (46) suggested *E. cloacae dissolvens* as a candidate for paratransgenesis approach to control of *Leishmania* transmission in the sand flies vectors. They genetically modified the bacterium to produce defensin as a *Plasmodium* killing effector protein. Defensins are small cysteine-rich cationic proteins and found in plants, vertebrates and invertebrates. They are active against fungi, bacteria, and many viruses. To use recombinant bacteria in practice, however, it is required a better understanding of the bacteria dynamics in mosquitoes and its delivery systems to vectors.

In this study, we evaluated the dynamics of *E. cloacae dissolvens* expressing green fluorescent and defensin proteins (GFP-D) in midgut of *An. stephensi* life stages as well as in larval habitats and sugar bait used as two delivery systems for the mosquito in the laboratory condition.

Materials and Methods

The mosquitoes

Anopheles stephensi, Beech strain originally collected from Pakistan as an additional type form ie SDA500 strain originating was provided in 2005 by Professor P.F. Billingsley, Sanaria, Inc (64). Breeding of the mosquitoes carried out in 27 ± 1 °C and $60\pm 10\%$ relative humidity with photoperiodic period of

12h. Adult mosquitoes were kept in $30\times 30\times 30$ cages. Mosquito feeding was carried out using fructose 5% and guinea pigs twice a week. *Anopheles* gravid, laying eggs in earthenware bowl containing decolorized water. The eggs were slowly transferred to tray having 1500ml of decolorized water before hatching. The fish food and a piece of leaf lettuce used as specific diet for *Anopheles* larvae.

The bacteria

Enterobacter cloacae subsp. *dissolvens* was isolated by sampling microflora of *Phlebotomus papatasi* in the field of zoonotic cutaneous leishmaniasis in Isfahan, central Iran, 2013–2014 (46). The manipulated strain of *E. cloacae* is carrying plasmid expressing difensin and GFP proteins and a gene resistant to tetracycline (Tet-gene). This strain known as *Enterobacter cloacae*-GFP-Difensin (*E. cloacae*-GFP-D) maintained in the School of Public Health, Tehran University of Medical Sciences. The bacterium was grown in Brain Heart Infusion (BHI) Broth culture until stationary phase, as determined by spectroscopic optical density (OD) measurements at 600nm. The bacteria were prepared by growing to an OD 600 of = 1 in Tet-BHI broth medium. Several dilutions of the OD 600= 1 were prepared covering a wide region of optical density from 0.1 to 1 and plated onto Tet-BHI agar for viable cell determination. The plates were incubated for 13h at 37 °C before counting the number of colony forming units (CFU). The gradients of the calibration curves showed that OD 600nm of 1.0 was corresponding to approximately 1×10^9 CFU per ml BHI broth medium.

Dynamics of *Enterobacter cloacae*-GFP-D Corncob-bacteria formulation (CCF) and sugar bait-bacteria

The method of Arshad et al. (65) was used to prepare corncob formulation (CCF) of *E. cloacae*-GFP-D and used as the bacterium-floating carrier in larval tray. The corncobs

were autoclaved followed by grinding to small particles less than 0.5mm in diameter. The medium containing *E. cloacae* centrifuged and the precipitated cells washed and suspended in 100µL PBS. The bacteria-PBS buffer was added on corncob and dried at room temperature. Almost 100µL of bacteria-PBS suspension was used for 0.1g grind corncob. Almost 0.1g of the dried CCF containing 5×10^9 bacterial cells was used for one litter of larval tray water in insectary condition. Sugar bait-bacteria were prepared by using 10^9 the bacterial cell per 1ml of fructose 5% and 2.5% red food dyes (Fig. 1) according to the method previously described by Wang et al. (66).

Introduction *Enterobacter cloacae*-GFP-D to mosquito larval habitats

About 200–300 *An. stephensi* eggs were transferred to tray containing sterile water and then the hatched larvae were transferred randomly to the test and control trays. The larvae were fed either on intact corncob and a piece of leaf lettuce in control tray or CCF and a piece of leaf lettuce in test tray. The number of released bacteria in test tray was 10^9 bacterial cells per liter of sterile water. The CCF was added following emergence of the first (L-I) and fourth (L-IV) instar larvae in test tray. Transstadial and dynamics of the bacteria were investigated by sampling of water and mosquitoes at larvae and adult stages.

Dynamics of *Enterobacter cloacae*-GFP-D in larval habitat

To test the course of time on proliferation and stability of *E. cloacae*-GFP-D in larval habitats of mosquitoes, water sampling was carried out daily from the test trays. For each sample, 10ml of the water was centrifuged at 13000 RPM for 10min followed by removing supernatant; the pellet was mixed with 1mL PBS buffer and vortexed. Finally, serial dilution of the bacterial suspension was prepared and 100µL of the proper dilution cultured in Tet-BHI agar. The number of colonies

(colony forming units: CFUs) was counted under a fluorescent microscope and number of the *E. cloacae* bacteria in one ml of test tray water was measured.

Bacterium transstadial transmission

To test the transstadial transmission of *E. cloacae*-GFP-D bacteria from larvae to adult stage of the mosquitoes we followed the method previously described by Lindh et al. (48). On brief, 5×10^6 bacteria as CCF per ml sterile water were released in larval breeding trays. Larvae were kept under laboratory condition until pupae stage. Fresh pupae were washed twice in sterile water and transferred to a new tray with 1000mL sterile water until adults emerged. After eclosion, the adult body surface of some specimens was sterilized in 70% alcohol, then the midgut dissected, homogenized in PBS, and cultivated in Tet-BHI agar/broth for 13h in 37 °C. However, some adults were transferred to 15×15×30cm cage and fed on sterile sugar solution during 24h. The female mosquitoes were blood fed on BALB/c mice and midgut microflora was determined by described method. The number of colonies (CFUs) was counted under a fluorescent microscope for all experiments (Fig. 2).

Dynamics of *Enterobacter cloacae*-GFP-D in *An. stephensi* larvae

In each sample, five larvae were selected and their surface bodies were sterilized by alcohol. Briefly, the larvae were transferred to microtubes containing 500µL sterile water and kept on ice for a few minutes until the larvae were numb, then 500µL of 70% cold ethanol (-5 °C) was added to the microtube after removing water and kept on ice about 5 min. The alcohol was removed and the larvae were washed twice with PBS buffer (4 °C). Finally, the total body of sterilized larvae homogenized in PBS buffer and 100ml of homogenized solution was cultured in Tet-BHI agar plates. Alternatively, the larvae were dis-

sected and their guts were homogenized in PBS buffer, cultured in Tet-BHI agar plates, and CFUs were counted as above. Simultaneously, survival rate of *An. stephensi* larvae in the test and control (corn cob contaminated with/without *E. cloacae*-GFP-D) trays were investigated.

Dynamics of *Enterobacter cloacae*-GFP-D in *Anopheles stephensi* adult gut

In order to study population dynamics of *E. cloacae*-GFP-D in *An. stephensi* adult, the 3–5d old female mosquitoes were transferred to 15×15×30cm cage and fed on sugar bait containing 10^9 the bacterial cell /mL fructose 5%, and 2.5% food dyes (red) according to the method previously described by Wang et al. (66) (Fig. 1). To count the bacteria populations (CFUs) in the adult guts, the female mosquitoes were numbed and immersed in ethanol 70% for 5–7min, placed on glass slides for 3–5min, and then transferred to microtube and homogenized in PBS buffer. Finally, 100μL of homogenized suspension samples was cultured in Tet-BHI agar plates. In an alternative method, after body surface sterilization, mosquito midguts were dissected and homogenized in PBS buffer. To evaluate course of time and sugar/blood meals on the CFUs of the bacterium, two separate experiments were designed. In the first experiment, 3–5d old female mosquitoes were fed on sugar bait, a subset of specimens was tested for the number of the bacteria immediately (1 hour) post sugar feeding. Then the sugar bait was removed from the cage for 7h and again the bacteria population was tested in a subset of females. Eight hours post sugar feeding, a blood meal was offered to the mosquitoes and then a subset of mosquito guts was tested for the bacteria at 12, 18, 24, 36, 48, 96, and 144h post blood meal. After day-6 (144h), a second blood meal was offered to the flies, and CFUs were counted for the guts 24 and 36h post second blood meal.

In the second experiment, 3–4d old female

mosquitoes were fed on sugar bait, a subset of specimens was tested for a number of the bacteria immediately (1 hour) post feeding. Then the sugar bait removed from the cage for 7h and again the bacteria populations were tested in a subset of females. Again, eight hours after first sugar meal, second sugar meal was offered to the mosquitoes and the CFUs were measured for the guts 24, 48, and 72h post second sugar meal. Then a blood meal was offered and a subset of mosquito guts was tested for the bacteria CFUs at 24 and 48h post blood meal. In both experiments, 3–4h in advance of offering blood meal, sugar bait containing the bacteria were removed from the cage, and after blood meal, the mosquitoes were kept on sterile cotton pad soaked with 5% fructose.

Stability of *Enterobacter cloacae*-GFP-D in sugar bait

Colony-forming units of the bacteria in sugar bait containing 10^9 bacteria cell /mL fructose 5% and 2.5% red food dyes was determined by daily sampling during eleven d. Sampling was carried out as follow, by pressing the cotton pad, 10μl of the above suspension was collected and added to 990μl of sterile PBS buffer and prepared serial dilutions. About 100μl of the final solution was cultured in Tet-BHI agar plates. After counting the colonies, number of bacteria per ml of bait was estimated.

Statistics and analytical procedure

Where it was necessary, the concentrations of CFUs were indicated using logarithmic notation, where the value was shown is the base 10 logarithm of the concentration. Bacteria relative abundance was calculated separately for each treatment. The average percentage of lifespan and larval death rate were presented. A significant difference in the bacteria relative abundance between samples was analyzed using the Mann–Whitney test. Multiple-sample comparisons were analyzed using the non-

parametric Kruskal–Wallis test, and medians were compared using Dunn’s test. GraphPad Prism version 5.00 for Windows (GraphPad Software) was used for all statistics. $P < 0.05$ was considered statistically significant.

Results

Corncob formulation (CCF) stability

The most attractive features of corn cob were considered as lightness and floating on the water surface. When this formulation supplied on mosquito breeding place, *Anopheles* larvae attracted to and fed on corn cob particles. Approximately, 90–95% and 50–60% of CCF particles remained floated on the tray water after 24 and 48h of their release, respectively.

Effect of *Enterobacter cloacae*-GFP-D on survival of *Anopheles stephensi* larvae

The survival rate of *An. stephensi* larvae in the test tray containing *E. cloacae*-GFP-D significantly was more than the control group at late larval stage. Vis-versa results of this experiment showed that death rate of control were significantly lower than the test group at larval stage II (Fig. 3, 4). Peak mortality in test groups occurred about days 8–9, whereas it happened about days 10–14 in control group (Fig. 4).

Effect of *Enterobacter cloacae*-GFP-D on development rate of *Anopheles stephensi* larvae

Development of *An. stephensi* larvae took longer time when kept in sterile water or in water containing *E. cloacae*-GFP-D in comparison with the ones kept in non-sterile water. On average adult, mosquitoes appeared 8–10d from the time of egg hatching when the larvae had kept in non-sterile water whereas it took 14–18d when the larvae bred in sterile water or water containing *E. cloacae*-GFP-D. Both test and control groups were supplied by a piece of lettuce and corn cob.

Dynamics of the bacteria in the larval stages and habitat of *Anopheles stephensi*

Population dynamics of *E. cloacae*-GFP-D had a descendant trend in the larval habitat indicating a weak recycling in water at insectary condition. The population of *E. cloacae*-GFP-D in the water decreased from 2×10^7 CFUs/ml at day-1 to 2960 CFUs/mL at the end of day-14 (Fig. 5). Trend of the bacteria in the guts of *An. stephensi* larvae also declined significantly from about 12000 CFUs in the second instar larvae (L-II) to less than 100 CFUs in the fourth instar larvae (L-IV) which is corresponding to the decreasing trend of the bacteria in the larval habitat water (Fig. 5).

Transstadial transmission

Enterobacter cloacae-GFP-D can survive and flourish in the guts of *An. stephensi* larvae but inadequately transmit transstadially from larvae to adult stage. The rate of bacteria positive in larval guts at late instars was more than 75% with a range of 7 to 756 CFUs per gut. However, most of the bacteria were removed from midgut in pupal stage due to histolysis and histogenesis phenomena. None of the pupae were positive for the bacteria and there were only 2–3 adult specimens (8–12%) were positive for *E. cloacae* subsp. *dissolvens* bacteria indicating very low transstadial transmission (Table 1). There were only a few ($n = 4$) bacteria in the newly emerged adult mosquito. The number of bacteria increased dramatically following a blood meal and reached to 10000 CFUs (Table 1).

Course of time and blood meal on *Enterobacter cloacae*-GFP-D in adult *Anopheles stephensi* midguts

We tested the effect of blood meal and course of time on loads of the bacteria in adult mosquitoes. Number of the bacteria in the adult mosquito midgut fed on sugar bait containing *E. cloacae*-GFP-D was on average one million per mosquito gut one-hour post sugar bait feeding. However, populations of the bacteria decreased about 100 folds after seven hours fasting (Fig. 6). Loads of bacte-

ria were dramatically increased about 73000 folds on average and maximized up to 155 million (about 73000000 on mean) CFUs 24h post blood meal. The bacteria populations were then declined gradually and reached to about 100 CFUs/gut 144h after (6d) blood meal intake. This trend, i.e. increase, and decrement of the bacteria populations happened again following second blood meal with a slightly lower rate than first blood meal (Fig. 6).

To test the effect of only sugar meal (fructose 5%) on the bacteria population, in a separate experiment, the mosquitoes were fed on sugar bait containing *E. cloacae*-GFP-D and then starved for 8h. Then they were fed on fructose 5% with no bacterai using cotton pad and the load of bacteria was counted daily for three following days. After 24h following normal sugar meal, the bacteria population raises up about 10 folds (10000 to 99000 CFUs

per gut) and again by course of time, the bacteria population decreased again (Fig. 7). The number of bacteria dropped about 1000 folds and reached to about 10 CFUs/gut after 72h (3d) (Fig. 7). A blood meal intake following three days causes tremendous (140000 folds) uprise in the number of adult guts bacteria but lower than the previous experiment (14 million versus 155 million).

Dynamics of *Enterobacter cloacae*-GFP-D in sugar bait

In order to determine the course of time on survival of *E. cloacae*-GFP-D in suspended sugar bait, trend of *E. cloacae*-GFP-D populations was investigated in the sugar solution of cotton pad. The number of bacteria was decreased 10 folds (from 1 million to 100000 CFU/ml) throughout 11d in the insectary condition (Fig. 8).

Table 1. Details of transstadial transmission of *Enterobacter cloacae*-GFP-D in *Anopheles stephensi* in insectary condition. Numbers refer to the guts harbor the bacteria out of 25 specimens.

Life stages	Tet-BHI broth	Tet-BHI agar (CFUs/gut)
Larvae IV	19	17 (7–756)
Pupae	0	0
Adult Blood Fed	2	1 (10,000)
Adult Unfed	1	1 (4)

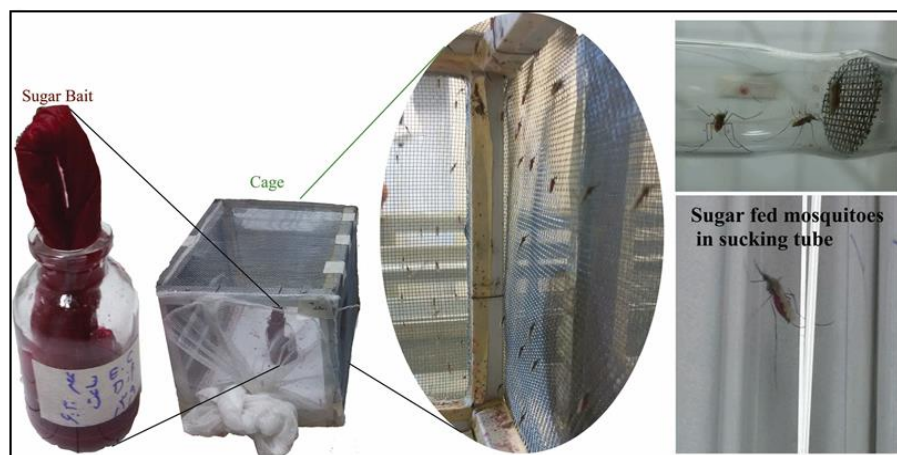


Fig. 1. Sugar bait containing 10^9 bacteria cell/mL (CFUs) fructose 5% and 2.5% food dyes used to introduce the *Enterobacter cloacae*-GFP-Defensin bacteria to mosquitoes via sugar feeding. The dye made abdomen reddish and visually distinguishable.

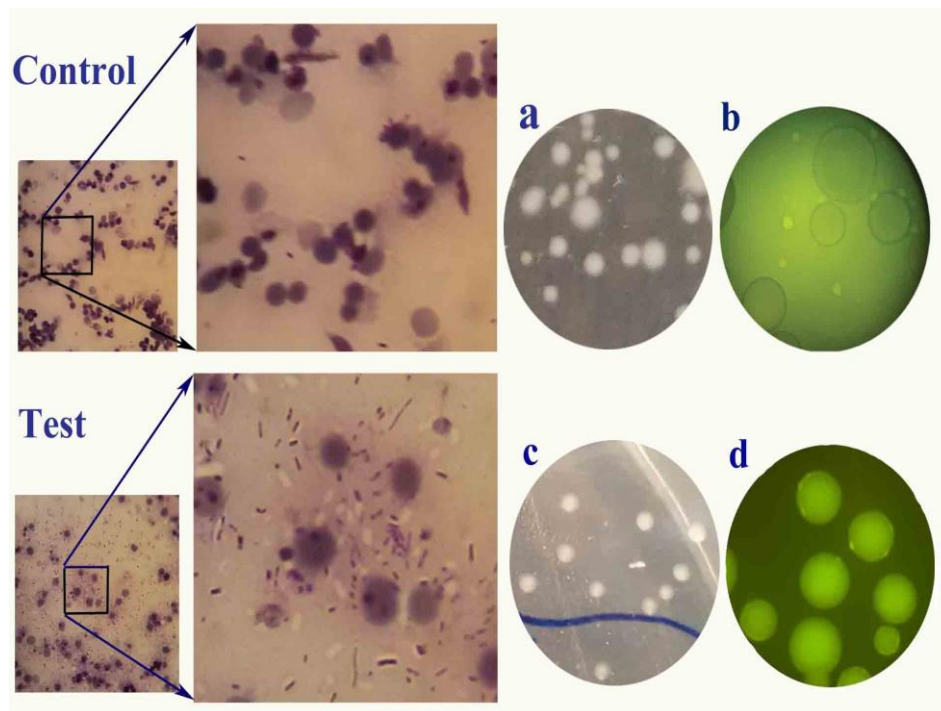


Fig. 2. The presence of *Enterobacter cloacae*-GFP-Defensin in dissected *Anopheles stephensi* midgut (squares) and BHI agar plates (circles), the bacteria with/out expressing green fluorescent protein in BHI agar plate under non-fluorescent (a and c) and fluorescent (b and d) microscope

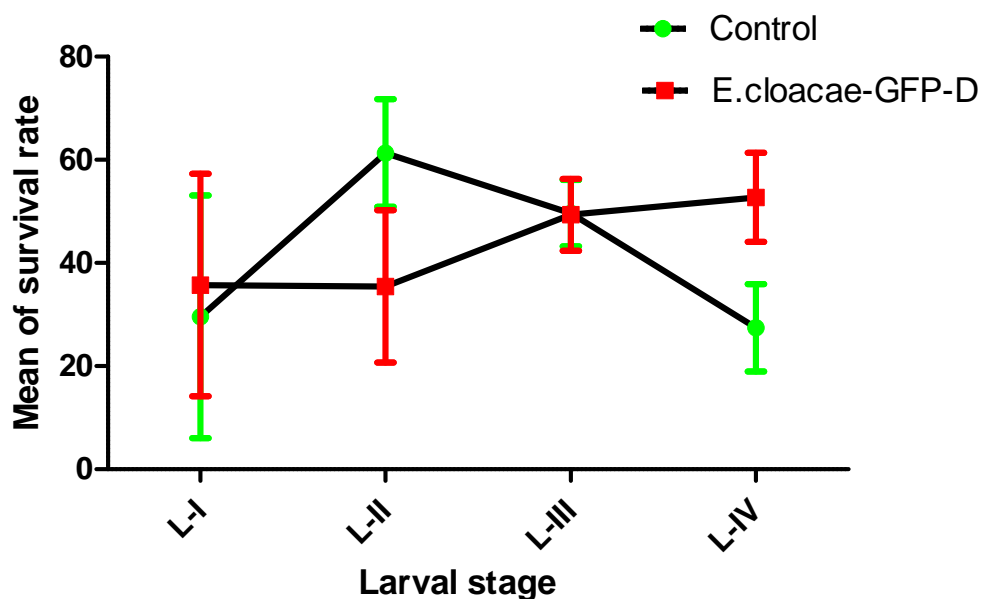


Fig. 3. Mean of survival rate of *Anopheles stephensi* larvae in test groups (sterile water+corn-cob-*Enterobacter cloacae*-GFP-Defensin) and control (sterile water+corn-cob) throughout larval development stages (14d) in insectary condition. The bars represent standard error of the mean

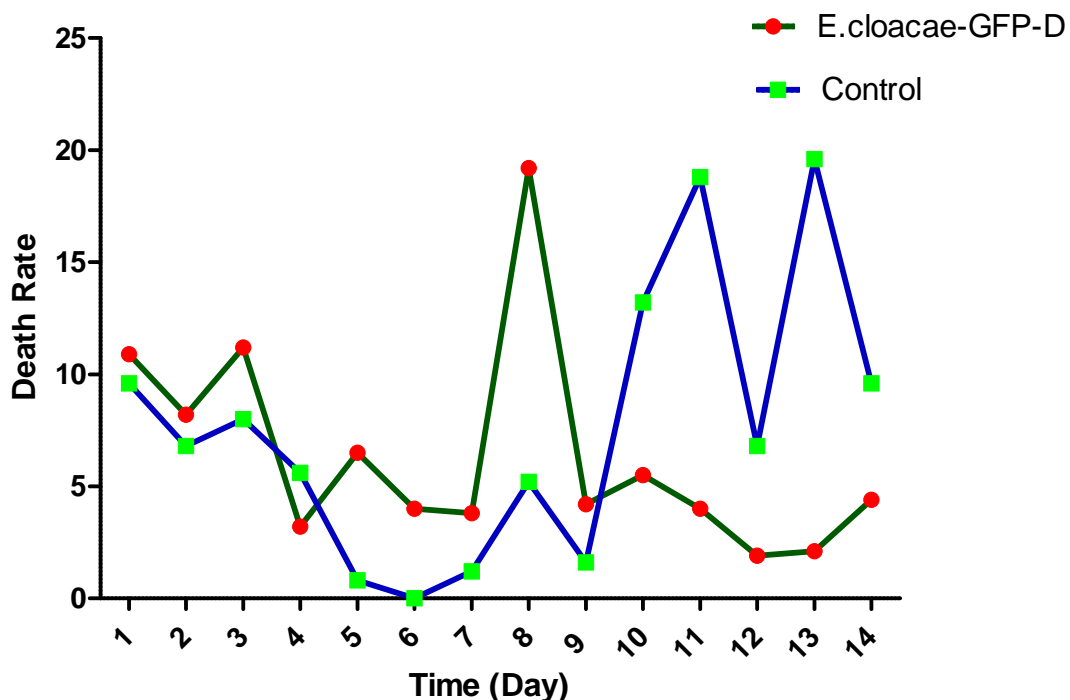


Fig. 4. Mortality rate of aquatic stages of *Anopheles stephensi* in test (sterile water+ CCF: corn-cob-*Enterobacter cloacae*-GFP-Defensin) and control (sterile water+corn-cob) tray throughout 14d in insectary condition.

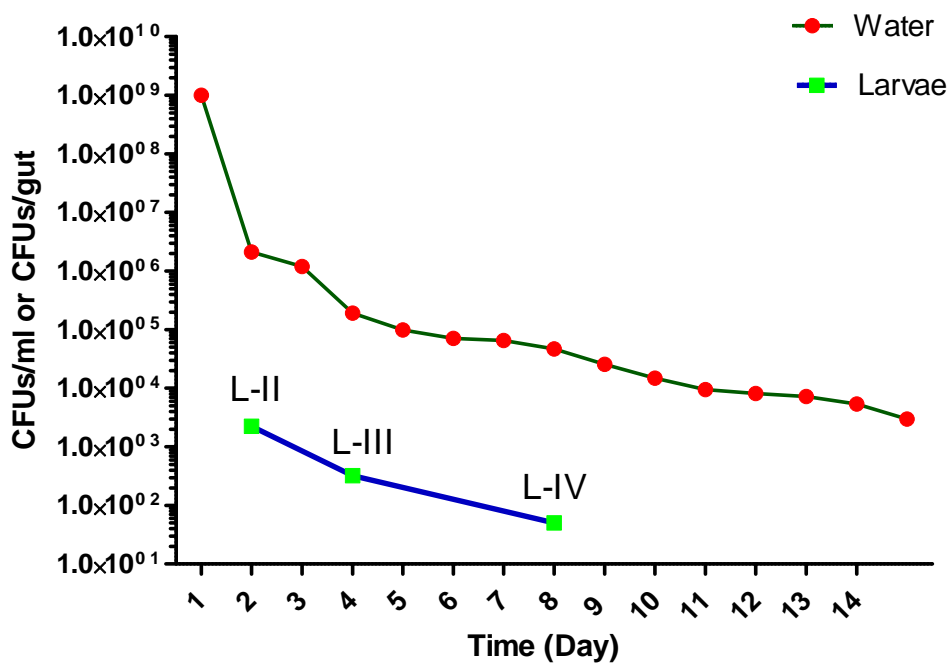


Fig. 5. Trend of *Enterobacter cloacae*-GFP-Defensin in the *Anopheles stephensi* larval habitat water (above) and guts (down) in insectary condition. L-II, L-III, and L-IV represent larval stage II, III, and IV respectively

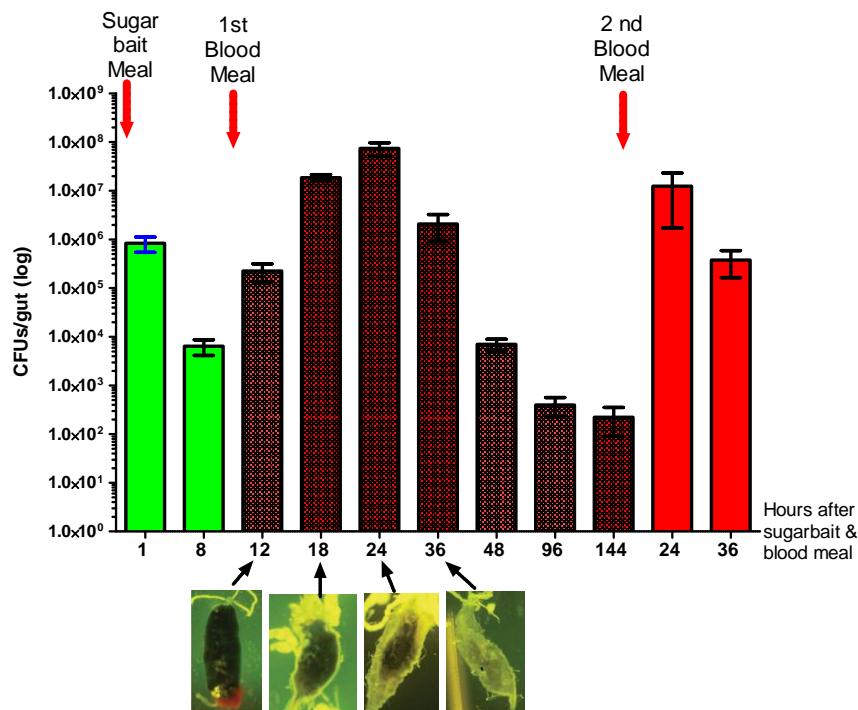


Fig. 6. Dynamics of *Enterobacter cloacae*-GFP-Defensin populations in the midgut of adult *Anopheles stephensi* fed on sugar bait containing 10⁹ the bacteria cell/mL fructose 5%. Midgut status 12, 18, 24, and 36h post blood meal is shown underneath. The bars represent standard error of the mean

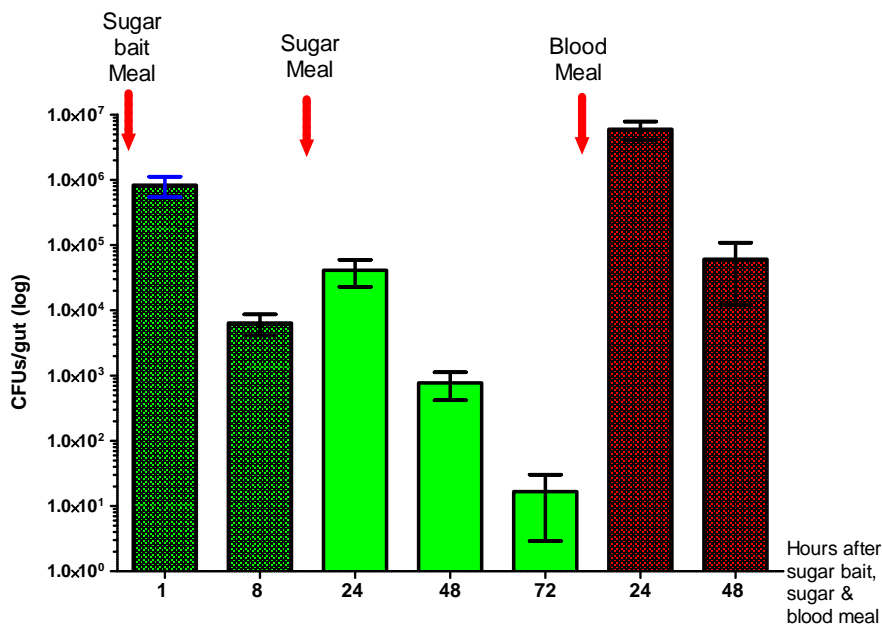


Fig. 7. Course of time, sugar, and blood meal on the dynamics of *Enterobacter cloacae*-GFP-Defensin populations in the midgut of adult *Anopheles stephensi*. Mosquitoes were fed on sugar bait containing 10⁹CFUs/mL fructose 5%, then kept starve for 8h, and then fed on sugar (cotton pad) for three days continuously and on blood meal after 72h. The bars represent standard error of the mean

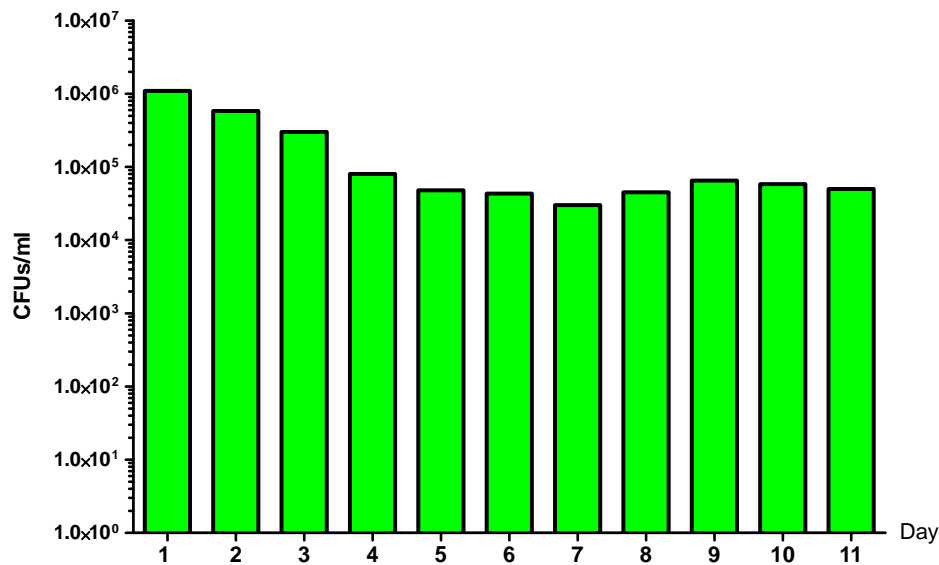


Fig. 8. Trend of *Enterobacter cloacae*-GFP-Defensin population in the sugar bait solution containing 10⁹CFUs/mL fructose 5% at the beginning of experiment (day zero) in insectary condition throughout 11 d.

Discussion

We investigated transstadial transmission and dynamics of *E. cloacae*-GFP-D within an *Anopheles stephensi* mosquito colony with the focus on larval habitat and sugar bait as two potential resources or delivery systems for introduction of the transgenic bacteria to mosquitoes. Our observations revealed that the symbiont *E. cloacae*-GFP-D strain was not able to colonize well in larvae midgut or water habitats of *An. stephensi* in laboratory rearing condition. The number of bacteria reduced progressively in both water and larvae midgut. Besides, number of the bacteria transferred transstadially was very low (4%). In this experiment, the bacteria were administered via corn cob formulation and drinking water, which is similar to the colonization patterns under a natural condition where bacterial symbionts are acquired throughout feeding or drinking water. Our larval rearing experiments evidently showed negative effects of *E. cloacae*-GFP-D on the development speed of *An. stephensi* larvae. These findings are in agreement with a previous study showed that *E. cloacae* could

not isolate from the midgut of insectary specimens of *An. albimanus* Weidemann from southern Mexico whereas the bacteria was already isolated from field specimens (51). However, a great diversity of microbiota of larvae and adult mosquito gut has been already reported by other researchers (57, 45, and 15). However, it is currently unclear why the *E. cloacae* symbiont is not recycling in larval habitats at insectary condition.

In contrast to the larvae, colonization of the *E. cloacae*-GFP-D bacteria proceeds rapidly in adult mosquito midguts following sugar or blood meal. Colonization occurred within a few hours after taking meal and maximized 24h post blood meal. The blood proteins apparently caused quick growth of midgut bacteria and when blood digestion is completed (on day 6 or later) most bacteria were defeated with blood remains. The peak activity of *E. cloacae*-GFP-D would be synchronized with ookinete formation of *Plasmodium* parasite within the mosquito midguts. By proliferation of *E. cloacae*-GFP-D in the adult

midgut, it could disrupt development of *Plasmodium* parasite directly by remarkable production of defensin, a killing parasite molecule, and indirectly by induction of *Anopheles* immune responses (33, 66, 67, 25). In this experiment, the bacteria were administered via sugar bait, which is similar to the colonization patterns under a natural condition where bacterial symbionts are acquired throughout sap feeding.

Adult mosquitoes may acquire bacteria from at least one of the three following sources: animal host skin while taking blood meal, plant saps through sugar feeding, and transstadially transmitted bacteria from larvae to adult (46, 59, 68). Knowing bacterial acquisition routes is essential and play important role for paratransgenic approach against malaria vectors since it commands how to introduce transgenic bacteria to the field condition. We found that *E. cloacae*-GFP-D is not able to propagate in the larval habitat and midgut and it does not transfer transstadially from larvae to pupae as well as not from pupae to adults, so the mosquitoes are not able to take up the bacteria from larval habitats. This indicates that introduction of *E. cloacae*-GFP-D to breeding sites of *An. stephensi* is not recommended in a paratransgenic approach. In contrast, results of introduction of the bacteria via sugar bait containing modified bacteria were promising. Propagation of the bacteria in the adult midgut and its prolonged stability in sugar bait revealed that sugar bait is an effective mean to introduce engineered bacteria into field mosquito populations. This may be achieved by placing sugar bait stations with attractive material such as fruit juice embedded at attractive places such as pit shelters, black box trap, and earthenware crock close to breeding sites of *Anopheles* mosquitoes (53, 67, 69). Sugar bait station was evaluated in semi-field condition by Mancini et al. (70) and showed that the modified bacteria were effectively capable of spreading at high rate in different *An. stephensi* and *An. gambiae* populations,

and successfully colonizing in the mosquito midguts. Recently Kotnis and Kuri (71) evaluated scenarios to calculate a number of required sugar baits and bait distribution to prevent a malaria outbreak. In our experiment, the *E. cloacae*-GFP-D was stable well in the cotton pads and remained viable at high rate through 11d which support suitability of sugar bait as a worthy mean for bacterial introduction to field. However, the stability and survival of *E. cloacae*-GFP-D in sugar bait should be evaluated in semi-field and field conditions in advance to use it in a real paratransgenic strategy.

The *E. cloacae* strain we used was easily cultivated outside the insect host on normal and cheap microbiological media and also genetically manipulated. In this study, we successfully used a GFP-defensin recombinant strain of the *E. cloacae* symbiont which allowed tracing of cells in plates originated from specimens such sugar baits and dissected midgut of larvae and adult mosquitoes. This bacterium was orally acquired successfully by adult mosquitoes from sugar bait that can be easily administered under semi-field and field conditions. *Enterobacter cloacae* have already been tested to deliver, express, and spread foreign genes in termite colonies (72) and mulberry pyralid moth, *Glyphodes pyloalis* (73).

The corn-cob formulation we prepared in this study was floated satisfactory on water surface for two days to supply the modified bacteria in insectary condition. This formulation was simple and needs to be developed to other known formulation such granule. Corn-cob has been successfully used as granule to supply *Bacillus thuringiensis* and *B. sphaericus* to control various larval mosquitoes in semi-field and field conditions (74-76). Factors potentially may influence the efficiency of formulation such as dosage of formulation, precipitation, flooding of the treated sites, and presence of other aquatic animals like fishes should be tested.

Conclusion

Sugar bait station is the best method for introduction of *E. cloacae*-GFP-D into the field condition. The population of the bacteria was increased dramatically within 24h post blood meal. It can interrupt malaria parasite development in the mosquito midgut. This administration is similar to the colonization patterns under a natural condition where bacterial symbionts are acquired throughout sap feeding. On the other hand, lack of proliferation of the bacteria in breeding sites and subsequently in the larval midgut disapproved introduction of the bacteria in *Anopheles* larval habitat for a paratransgenetic approach.

Acknowledgments

This study was supported by the Tehran University of Medical Sciences, Iran, Grant number 26231. We thank Ms Talaei (Central Laboratory of SPH, TUMS) and Ms Salimi (Department of Medical Parasitology, SPH, TUMS) for helping in fluorescent microscopy and Fatemeh Rafie (Department of Medical Entomology and Vector Control, SPH, TUMS) for rearing mosquitoes. The authors declare that there is no conflict of interest.

References

1. Anjomruz M, Oshaghi MA, Pourfatollah AA, Sedaghat MM, Raeisi A, Vatandoost H, Khamesipour A, Abai MR, Mohtarami F, Akbarzadeh K, Rafie F, Besharati M (2014) Preferential feeding success of laboratory reared *Anopheles stephensi* mosquitoes according to ABO blood group status. *Acta Trop.* 140: 118–123.
2. Karimian F, Oshaghi MA, Sedaghat MM, Waterhouse RM, Vatandoost H, Hanafi-Bojd AA, Ravasan NM, Chavshin AR (2014) Phylogenetic analysis of the oriental-Palearctic-Afrotropical members of *Anopheles* (Culicidae: Diptera) based on nuclear rDNA and mitochondrial DNA characteristics. *Jpn J Infect Dis.* 67(5): 361–367.
3. Norouzinejad F, Ghaffari F, Raeisi A, Norouzinejad A (2016) Epidemiological status of malaria in Iran, 2011–2014. *Asian Pac J Trop Med.* 9(11): 1055–1061.
4. Naddaf SR, Oshaghi MA, Vatandoost H, Assmar M (2003) Molecular characterization of *Anopheles fluviatilis* species complex in the Islamic Republic of Iran. *East Mediterr Health J.* 9(3): 257–265.
5. Vatandoost H, Emami SN, Oshaghi MA, Abai MR, Raeisi A, Piazak N, Mahmoodi M, Akbarzadeh K, Sartipi M (2011) Ecology of malaria vector *Anopheles culicifacies* in a malarious area of Sistan va Baluchestan Province, south-east Islamic Republic of Iran. *East Mediterr Health J.* 17(5): 439–445.
6. Vatandoost H, Oshaghi MA, Abaie MR, Shahi M, Yaaghoobi F, Baghahi M, Hanafi-Bojd AA, Zamani G, Townson H (2006) Bionomics of *Anopheles stephensi* Liston in the malarious area of Hormozgan Province, southern Iran, 2002. *Acta Trop.* 97(2): 196–203.
7. Vatandoost H, Shahi H, Abai MR, Hanafi-Bojd AA, Oshagh MA, Zamani G (2004) Larval habitats of main malaria vectors in Hormozgan Province and their susceptibility to different larvicides. *Southeast Asian J Trop Med Public Health.* 35(2): 22–25.
8. Emami SN, Vatandoost H, Oshaghi MA, Mohtarami F, Javadian E, Raeisi A (2007) Morphological method for sexing anopheline larvae. *J Vector Borne Dis.* 44(4): 245–249.
9. Mehravaran A, Oshaghi MA, Vatandoost H, Abai MR, Ebrahimzadeh A, Roodi AM,

- Grouhi A (2011) First report on *Anopheles fluviatilis* U in southeastern Iran. *Acta Trop.* 117(2): 76–81.
10. Hanafi-Bojd AA, Vatandoost H, Oshaghi MA, Haghdoost AA, Shahi M, Sedaghat MM, Abedi F, Yeryan M, Pakari A (2012) Entomological and epidemiological attributes for malaria transmission and implementation of vector control in southern Iran. *Acta Trop.* 121(2): 85–92.
 11. Oshaghi MA, Shemshad Kh, Yaghobi-Ershadi MR, Pedram M, Vatandoost H, Abaie MR, Akbarzadeh K, Mohtarami F (2007) Genetic structure of the malaria vector *Anopheles superpictus* in Iran using mitochondrial cytochrome oxidase (COI and COII) and morphologic markers: a new species complex? *Acta Trop.* 101(3): 241–248.
 12. Oshaghi MA, Yaghobi-Ershadi MR, Shemshad K, Pedram M, Amani H (2008) The *Anopheles superpictus* complex: introduction of a new malaria vector complex in Iran. *Bull Soc Pathol Exot.* 101(5): 429–434.
 13. Oshaghi MA, Yaaghoobi F, Abaie MR (2006) Pattern of mitochondrial DNA variation between and within *Anopheles stephensi* (Diptera: Culicidae) biological forms suggests extensive gene flow. *Acta Trop.* 99(2–3): 226–233.
 14. Mehravaran A, Vatandoost H, Oshaghi MA, Abai MR, Edalat H, Javadian E, Mashayekhi M, Piazak N, Hanafi-Bojd AA (2012) Ecology of *Anopheles stephensi* in a malarious area, southeast of Iran. *Acta Med Iran.* 50(1): 61–65.
 15. Chavshin AR, Oshaghi MA, Vatandoost H, Pourmand MR, Raeisi A, Terenius O (2014) Isolation and identification of culturable bacteria from wild *Anopheles culicifacies*, a first step in a para-transgenesis approach. *Parasit Vectors.* 7: 419.
 16. Davari B, Vatandoost H, Oshaghi MA, Ladonni H, Enayati AA, Shaeghi M, Basseri HR, Rassi Y, Hanafi-Bojd AA (2007) Selection of *Anopheles stephensi* with DDT and dieldrin and cross-resistance spectrum to pyrethroids and fipronil. *Pestic Biochem Physiol.* 89(2): 97–103.
 17. Abai MR, Mehravaran A, Vatandoost H, Oshaghi MA, Javadian E, Mashayekhi M, Moslemnia A, Piyazak N, Edallat H, Mohtarami F, Jabbari H, Rafi F (2008) Comparative performance of imagicides on *Anopheles stephensi*, main malaria vector in a malarious area, southern Iran. *J Vector Borne Dis.* 45(4): 307–312.
 18. Soleimani-Ahmadi M, Vatandoost H, Shaeghi M, Raeisi A, Abedi F, Eshraghian MR, Madani A, Safari R, Oshaghi MA, Abtahi M, Hajjaran H. (2012) Field evaluation of permethrin long-lasting insecticide treated nets (Olyset®) for malaria control in an endemic area, southeast of Iran. *Acta Trop.* 123(3): 146–153.
 19. Fathian M, Vatandoost H, Moosa-Kazemi SH, Raeisi A, Yaghoobi-Ershadi MR, Oshaghi MA, Sedaghat MM (2014) Susceptibility of Culicidae Mosquitoes to Some Insecticides Recommended by WHO in a Malaria Endemic Area of Southeastern Iran. *J Arthropod Borne Dis.* 9(1): 22–34.
 20. Soltani A, Vatandoost H, Oshaghi MA, Ravasan NM, Enayati AA, Asgarian F (2014) Resistance Mechanisms of *Anopheles stephensi* (Diptera: Culicidae) to Temephos. *J Arthropod Borne Dis.* 9(1): 71–83.
 21. Gorouhi MA, Vatandoost H, Oshaghi MA, Raeisi A, Enayati AA, Mirhendi H, Hanafi-Bojd AA, Abai MR, Salim-Abadi Y, Rafi F (2016) Current Susceptibility Status of *Anopheles ste-*

- phensi* (Diptera: Culicidae) to Different Imagicides in a Malarious Area, Southeastern of Iran. J Arthropod Borne Dis. 10(4): 493–500.
22. Enayati AA, Vatandoost H, Ladonni H, Townson H, Hemingway J (2003) Molecular evidence for a kdr-like pyrethroid resistance mechanism in the malaria vector mosquito *Anopheles stephensi*. Med Vet Entomol. 17(2): 138–44.
 23. Sanil D, Shetty V, Shetty NJ (2014) Differential expression of glutathione s-transferase enzyme in different life stages of various insecticide-resistant strains of *Anopheles stephensi*: a malaria vector. J Vector Borne Dis. 51(2): 97–105.
 24. Ahmad M, Buhler C, Pignatelli P, Ranson H, Nahzat SM, Naseem M, Sabawoon MF, Siddiqi AM, Vink M (2016) Status of insecticide resistance in high-risk malaria provinces in Afghanistan. Malar J. 15: 98.
 25. Wang S, Jacobs-Lorena M (2013) Genetic approaches to interfere with malaria transmission by vector mosquitoes. Trends Biotechnol. 31(3): 185–193.
 26. WHO Fact Sheet: World Malaria Report (2015) Geneva: World Health Organization, 2015.
<http://www.who.int/malaria/media/world-malaria-report-2015/en/>
 27. Ghosh A, Edwards M, Jacobs-Lorena M (2000) The journey of the malaria parasite in the mosquito: hopes for the new century. Parasitol Today. 16(5): 196–201.
 28. Whitten MM, Shiao SH, Levashina EA (2006) Mosquito midguts and malaria: cell biology, compartmentalization and immunology. Parasite Immunol. 28: 121–130.
 29. Sinden RE, Dawes EJ, Alavi Y, Waldock J, Finney O, Mendoza J, Butcher GA, Andrews L, Hill AV, Gilbert SC, Basáñez MG (2007) Progression of *Plasmodium berghei* through *Anopheles stephensi* is density-dependent. PLoS Pathog. 3: e195.
 30. Cirimotich CM, Dong Y, Clayton AM, Sandiford SL, Souza-Neto JA, Mullen M, Dimopoulos G (2011) Natural microbe-mediated refractoriness to *Plasmodium* infection in *Anopheles gambiae*. Science. 332: 855–858.
 31. Eappen AG, Smith RC, Jacobs-Lorena M (2013) Enterobacter-Activated Mosquito Immune Responses to *Plasmodium* Involve Activation of SRPN6 in *Anopheles stephensi*. PLoS ONE. 8(5): e62937.
 32. Pumpuni CB, Beier MS, Nataro JP, Guers LD, Davis JR (1993) *Plasmodium falciparum*: inhibition of sporogonic development in *Anopheles stephensi* by gram-negative bacteria. Exp Parasitol. 77: 195–199.
 33. Pumpuni CB, Demaio J, Kent M, Davis JR, Beier JC (1996) Bacterial population dynamics in three anopheline species: the impact on *Plasmodium* sporogonic development. The Am J Trop Med Hyg. 54: 214–218.
 34. Dong Y, Manfredini F, Dimopoulos G (2009) Implication of the mosquito midgut microbiota in the defense against malaria parasites. PLoS Pathog. 5: e1000423.
 35. Meister S1, Agianian B, Turlure F, Relógio A, Morlais I, Kafatos FC, Christophides GK (2009) *Anopheles gambiae* PGRPLC-mediated defense against bacteria modulates infections with malaria parasites. PLoS Pathog. 5: e1000542.
 36. Cirimotich CM, Dong Y, Garver LS, Sim S, Dimopoulos G (2010) Mosquito immune defenses against *Plasmodium* infection. Dev Comp Immunol. 34: 387–395.

37. Kumar S, Molina-Cruz A, Gupta L, Rodrigues J, Barillas-Mury C (2010) A peroxidase/dual oxidase system modulates midgut epithelial immunity in *Anopheles gambiae*. *Science*. 327: 1644–1648.
38. Rodrigues J, Brayner FA, Alves LC, Dixit R, Barillas-Mury C (2010) Hemocyte differentiation mediates innate immune memory in *Anopheles gambiae* mosquitoes. *Science*. 329: 1353–1355.
39. Beard CB, Cordon-Rosales C, Durvasula RV (2002) Bacterial symbionts of the Triatominae and their potential use in control of Chagas disease transmission. *Annu Rev Entomol*. 47: 123–141.
40. Durvasula RV, Gumbs A, Panackal A, Kruglov O, Aksoy S, Merrifield RB, Richards FF, Beard CB (1997) Prevention of insect-borne disease: An approach using transgenic symbiotic bacteria. *Proc Natl Acad Sci USA*. 94: 3274–3278.
41. Riehle MA, Jacobs-Lorena M (2005) Using bacteria to express and display anti-parasite molecules in mosquitoes: current and future strategies. *Insect Biochem Mol Biol*. 35(7): 699–707.
42. Coutinho-Abreu IV, Zhu KY, Ramalho-Ortigao M (2010) Transgenesis and paratransgenesis to control insect-borne diseases: current status and future challenges. *Parasitol Int*. 59(1):1–8.
43. Sreenivasamurthy SK, Dey G, Ramu M, Kumar M, Gupta MK, Mohanty AK, Harsha HC, Sharma P, Kumar N, Pandey A, Kumar A, Prasad TS (2013) A compendium of molecules involved in vector-pathogen interactions pertaining to malaria. *Malar J*. 12: 216.
44. Gimonneau G, Tchioffo MT, Abate L, Boissière A, Awono-Ambéné PH, Nsango SE, Christen R, Morlais I (2014) Composition of *Anopheles coluzzii* and *Anopheles gambiae* microbiota from larval to adult stages. *Infect Genet Evol*. 28: 715–24.
45. Chavshin AR, Oshaghi MA, Vatandoost H, Pourmand MR, Raeisi A, Enayati AA, Mardani N, Ghoorchian S (2012) Identification of bacterial microflora in the midgut of the larvae and adult of wild caught *Anopheles stephensi*: A step toward finding suitable paratransgenesis candidates. *Acta Trop*. 121: 129–134.
46. Maleki-Ravasan N, Oshaghi MA, Afshar D, Arandian MH, Hajikhani S, Akhavan AA, Yakhchali B, Shirazi MH, Rassi Y, Jafari R, Aminian K, Fazeli-Varzaneh RA, Durvasula R (2015) Aerobic bacterial flora of biotic and abiotic compartments of a hyperendemic Zoonotic Cutaneous Leishmaniasis (ZCL) focus. *Parasit Vectors*. 8: 63.
47. Merritt RW, Dadd RH, Walker ED (1992) Feeding behavior, natural food, and nutritional relationships of larval mosquitoes. *Annu Rev Entomol*. 37: 349–376.
48. Lindh JM, Borg-Karlson AK, Faye I (2008) Transstadial and horizontal transfer of bacteria within a colony of *Anopheles gambiae* (Diptera: Culicidae) and oviposition response to bacteria-containing water. *Acta Trop*. 107(3): 242–250.
49. Wang Y, Gilbreath TM, Kukutla P, Yan G, Xu J (2011) Dynamic gut microbiome across life history of the malaria mosquito *Anopheles gambiae* in Kenya. *PLoS One*. 6: e24767.
50. Straif SC, Mbogo CN, Toure AM, Walker ED, Kaufman M, Toure YT, Beier JC (1998) Midgut bacteria in *Anopheles gambiae* and *An. Funestus* (Diptera: Culicidae) from Kenya and Mali. *J Med Entomol*. 35: 222–226.
51. Gonzalez-Ceron L, Santillan F, Rodriguez

- MH, Mendez D, Hernandez-Avila JE (2003) Bacteria in midguts of field-collected *Anopheles albimanus* block *Plasmodium vivax* sporogonic development. J Med Entomol. 40: 371–374.
52. Lindh JM, Terenius O, Faye I (2005) 16S rRNA gene-based identification of midgut bacteria from field-caught *Anopheles gambiae* sensu lato and *An. funestus* mosquitoes reveals new species related to known insect symbionts. Appl Environ Microbiol. 71: 7217–7223.
53. Favia G, Ricci I, Damiani C, Raddadi N, Crotti E, Marzorati M, Rizzi A, Urso R, Brusetti L, Borin S, Mora D, Scuppa P, Pasqualini L, Clementi E, Genchi M, Corona S, Negri I, Grandi G, Alma A, Kramer L, Esposito F, Bandi C, Sacchi L, Daffonchio D (2007) Bacteria of the genus *Asaia* stably associates with *Anopheles stephensi*, an Asian malarial mosquito vector. Proc Natl AcadSci USA. 104: 9047–9051.
54. Damiani C, Ricci I, Crotti E, Rossi P, Rizzi A, Scuppa P, Esposito F, Bandi C, Daffonchio D, Favia G (2008) Paternal transmission of symbiotic bacteria in malaria vectors. Curr Biol. 18(23): R1087–1088.
55. Damiani C, Ricci I, Crotti E, Rossi P, Rizzi A, Scuppa P, Capone A, Ulissi U, Epis S, Genchi M, Sagnon N, Faye I, Kang A, Chouaia B, Whitehorn C, Moussa GW, Mandrioli M, Esposito F, Sacchi L, Bandi C, Daffonchio D, Favia G (2010) Mosquito-bacteria symbiosis: the case of *Anopheles gambiae* *Asaia*. Microb Ecol. 60: 644–654.
56. Terenius O, De Oliveira CD, Pinheiro WD, Tadei WP, James AA, Marinotti O (2008) 16S rRNA gene sequences from bacteria associated with adult *Anopheles darlingi* (Diptera: Culicidae) mosquitoes. J Med Entomol. 45: 172–175.
57. Rani A, Sharma A, Rajagopal R, Adak T, Bhatnagar R (2009) Bacterial diversity analysis of larvae and adult midgut microflora using culture-dependent and culture-independent methods in lab-reared and field-collected *Anopheles stephensi* an Asian malarial vector. BMC Microbiol. 9: 96.
58. Ricci I, Damiani C, Rossi P, Capone A, Scuppa P, Cappelli A, Ulissi U, Mosca M, Valzano M, Epis S, Crotti E, Daffonchio D, Alma A, Sacchi L, Mandrioli M, Bandi C, Favia G (2011) Mosquito symbioses: from basic research to the paratransgenic control of mosquito-borne diseases. J Appl Entomol. 135: 487–493.
59. Chavshin AR, Oshaghi MA, Vatandoost H, Yakhchali B, Zarenejad F, Terenius O (2015) Malpighian tubules are important determinants of *Pseudomonas* transstadial transmission and longtime persistence in *Anopheles stephensi*. Parasit Vectors. 8: 36.
60. Moll RM, Romoser WS, Modrakowski MC, Moncayo AC, Lerdthusnee K (2001) Meconial peritrophic membranes and the fate of midgut bacteria during mosquito (Diptera: Culicidae) metamorphosis. J Med Entomol. 38: 29–32.
61. Chao J, Wistreich G (1959) Microbial isolation from the midgut of *Culex tarsalis* Coquillett. J Insect Pathol. 1: 311–318.
62. Demaio J, Pumpuni CB, Kent M, Beier JC (1996) The midgut bacterial flora of wild *Aedes triseriatus*, *Culex pipiens* and *Psorophora columbiae* mosquitoes. Am J Trop Med Hyg. 54: 219–223.
63. Yadav KK, Bora A, Datta S, Chandel K, Gogoi HK, Prasad GB, Veer V (2015) Molecular characterization of midgut microbiota of *Aedes albopictus* and *Ae-*

- des aegypti* from Arunachal Pradesh, India. Parasit Vectors. 8: 641.
64. Basseri HR, Mohamadzadeh Hajipirloo H, Mohammadi Bavani M, Whitten MM (2013) Comparative susceptibility of different biological forms of *Anopheles stephensi* to *Plasmodium berghei* ANKA strain. PLoS One. 8(9): e75413.
 65. Arshad A, Rui-De X, Rechar L, Naphatali C (1994) Evaluation of granular corn cob formulations of *Bacillus thuringiensis* serovar israelensis against mosquito larvae using a semi-field bioassay method. J Am Mosq Control Assoc. 10: 492–495.
 66. Wang S, Ghosh AK, Bongio N Stebbings KA, Lampe DJ, Jacobs-Lorena M (2012) Fighting malaria with engineered symbiotic bacteria from vector mosquitoes. Proc Natl Acad Sci U S A. 109(31): 12734–12739.
 67. Riehle MA, Moreira CK, Lampe D, Lauzon C, Jacobs-Lorena M (2007) Using bacteria to express and display anti-*Plasmodium* molecules in the mosquito midgut. Int J Parasitol. 37: 595–603.
 68. Coon KL, Vogel KJ, Brown MR, Strand MR (2014) Mosquitoes rely on their gut microbiota for development. Mol Ecol. 23(11): 2727–2739.
 69. Müller GC, Beier JC, Traore SF, Toure MB, Traore MM, Bah S, Doumbia S, Schlein Y (2010) Successful field trial of attractive toxic sugar bait (ATSB) plant-spraying methods against malaria vectors in the *Anopheles gambiae* complex in Mali, West Africa. Malar J. 9: 210.
 70. Mancini MV, Spaccapelo R, Damiani C, Accoti A, Tallarita M, Petraglia E1, Rossi P, Cappelli A, Capone A, Peruzzi G, Valzano M, Picciolini M, Diabaté A, Facchinelli L, Ricci I, Favia G (2016) Paratransgenesis to control malaria vectors: a semi-field pilot study. Parasit Vectors. 9: 140.
 71. Kotnis B, Kuri J (2016) Evaluating the usefulness of paratransgenesis for malaria control. Math Biosci. 277: 117–125.
 72. Husseneder C, Grace JK (2005) Genetically engineered termite gut bacteria (*Enterobacter cloacae*) deliver and spread foreign genes in termite colonies. Appl Microbiol Biotechnol. 68: 360–367.
 73. Watanabe K, Abe K, Sato M (2000) Biological control of an insect pest by gut-colonizing *Enterobacter cloacae* transformed with ice nucleation gene. J Appl Microbiol. 88: 90–97.
 74. Ali A, Xue RD, Lobinske R, Carandang N (1994) Evaluation of granular corn cob formulations of *Bacillus thuringiensis* serovar israelensis against mosquito larvae using a semi-field bioassay method. J Am Mosq Control Assoc. 10(4): 492–495.
 75. Mulla MS, Rodcharoen J, Ngamsuk W, Tawatsin A, Pan-Urai P, Thavara U (1997) Field trials with *Bacillus sphaericus* formulations against polluted water mosquitoes in a suburban area of Bangkok, Thailand. J Am Mosq Control Assoc. 13(4): 297–304.
 76. Vilarinhos PT, Monnerat R (2004) Larvicidal persistence of formulations of *Bacillus thuringiensis* var. israelensis to control larval *Aedes aegypti*. J Am Mosq Control Assoc. 20(3): 311–314.