

Original Article

Situational Analysis of Cutaneous Leishmaniasis in an Endemic Focus of the Disease, Southeastern Iran

Sajjad Fekri ¹, *Ahmad Ali Hanafi-Bojd ², Yousef Salari ³, Parivash Davoodian ¹, Reza Safari ³, Habib Dadvand ¹, Mohsen Mohebbi ⁴, Hossein Issazadeh ⁵, Zahra kamali ¹

¹Infectious and Tropical Diseases Research Center, Hormozgan University of Medical Sciences, Bandar Abbas, Iran

²Department of Medical Entomology and Vector Control, School of Public Health, Tehran University of Medical Sciences, Tehran, Iran

³Department of Diseases Control, Hormozgan University of Medical Sciences, Bandar Abbas, Iran

⁴Department of Diseases Control, Hormozgan University of Medical Sciences, Qeshm, Iran

⁵Department of Diseases Control, Hormozgan University of Medical Sciences, Jask, Iran

(Received 17 Apr 2017; accepted 21 Feb 2018)

Abstract

Background: Leishmaniasis is one of the most important vector-borne diseases in Iran, existing in a variety of forms ranging from cutaneous to visceral forms. Jask County has been recognized as an endemic focus of the disease in the southeastern region of Iran. This study analyzed the situation of cutaneous leishmaniasis (CL) during 2006–2014.

Methods: This cross-sectional analytical study was conducted on CL data got from health sector. ArcGIS 10.3 was exploited for the spatial analysis of CL. Potential high-risk areas of the disease regarding its' current geographical distribution were considered.

Results: Overall, 874 CL cases had been registered in the district health center, implying an average incidence of 162.5 per 100,000. More than 90% of the cases emerged from rural areas. The disease is geographically distributed in the southeastern regions of Jask County. Over one-third of the total study area can be classified as high-risk areas, involving 61 villages with a total population of about 18,000. Remarkably, altitude and total precipitation were realized to play key roles in CL transmission within the study area.

Conclusion: Although the national protocol for the control of ZCL recommends the substantial destruction of rodent colonies serving as reservoirs of the disease in infected foci, critical improvement of the knowledge of the residents in these areas is crucial for community-based management of the disease in Jask County.

Keywords: Cutaneous leishmaniasis, Epidemiology, Spatial analysis, Iran

Introduction

Leishmaniasis is a neglected disease which exists in three forms worldwide, cutaneous, visceral and mucocutaneous. It is among the 10 most important parasitic diseases in the tropics, and several dimensions of research supported by WHO have been conducted on various aspects of the disease (1). The disease is widely distributed in 90 countries, and its DALY is estimated as 2,400,000/yr (2). Nearly 90% of cutaneous leishmaniasis in the world is originating from Afghanistan, Algeria, Brazil, Iran, Peru, Saudi

Arabia and Syria, and the highest incidence of the disease occurs in Afghanistan and Iran (3). In Iran, the disease is commonly manifested in 17 out of the 31 provinces of the country, with estimated annual cases exceeding 20,000 within the country (4). There has been an increasing trend of the prevalence of leishmaniasis in Iran, and provinces including Yazd, Bushehr, Khorassan-e-Razavi, Fars, Ilam, Khuzestan, and Esfahan have recorded the highest prevalence of the disease with many endemic foci (5).

*Corresponding author: Dr Ahmad Ali Hanafi-Bojd,
E-mail: aahanafibojd@tums.ac.ir

The spatial distribution of CL depends highly on environmental factors, not excluding socioeconomic circumstances such as poverty and the knowledge of the entire populace concerning the transmission and prevention of the disease (6). Extensive drought occurrence within the last two decades, mostly in the eastern, central and southern parts of Iran, coupled with the development of urbanization and the extension of localized agricultural activities in some other areas, have provided suitable conditions for the transmission of the disease because of the proximity between human, reservoir hosts, and vectors. *Phlebotomus papatasi* is identified as the main vector of zoonotic cutaneous leishmaniasis (ZCL), although *Ph. salehi* has been infected with *L. major*, the causative agent of ZCL, in some areas (7, 8).

Gerbils (Rodentia: Gerbillidae) are the main reservoir hosts of the diseases in Iran (9). Earlier, in the Jask County, southeastern Iran, *P. papatasi* and *Meriones hurrianae* were reported as the vector and the reservoir of CL respectively, and have detected *L. major* infection in *Gerbillus nanus* (10). Recently, this county has been targeted as the chief endemic focus of zoonotic cutaneous leishmaniasis (ZCL) in the Hormozgan province of Iran.

Although no mortality associated with CL has been recorded so far, the disease is heavily problematic for the inhabitants living in endemic areas due to the debilitating and disfiguring effect of the disease, and the long latency period once the disease is established. Regardless of the pervasive efforts to prevent the disease, no potent vaccines have been developed for the disease, leaving its treatment complicated (11). The best alternatives for controlling the disease are environmental management adoption, personal protection and the control of rodents (reservoir) of the disease (12). As a zoonotic vector-borne disease, leishmaniasis is greatly affected by environmental and socioeconomic factors which play central roles in the disease cycle. Using geographical

information system (GIS) these factors can be investigated to detect the high-risk areas of CL infection, and to rank effective measures in controlling the disease (13, 14).

Recently, GIS has been applied in similar studies to model the probability of presence for the vectors (8) and reservoirs (9) of ZCL, and to produce a risk map for the disease using gathered data of the disease and associated environmental factors (14-16). GIS-based techniques are potentially beneficial to manage ZCL in different settings.

Considering the current significant situation of cutaneous leishmaniasis in the Jask County, the present study was aimed at assessing the epidemiology of the disease and analyzing its potential risk of infection.

Materials and Methods

Jask County, encompassing a landmass of 11141km², is located in the eastern quarter of the Hormozgan Province, southeastern Iran (Fig. 1). The geographical coordinates of the county lie between 57°10'-59 ° 16' E and 25°23'-26°13' N. As at 2015, the population of Jask County had reached 53770. The county comprises 164 residential villages. The weather of this county is described as being warm and dry in warmer summers and cold in temperate winters although the relative humidity across the coastal plain exceeds 50%. Jask County is often designated as having a hot desert climate. Topographically, this county has two distinct areas; a coastal plain mainly covered by the city of Jask and most villages bordered with the Oman Sea to the south, and a hilly to mountainous area in northern part.

Data collection

Characteristic features of the cases of cutaneous leishmaniasis referred to the appropriate health division for treatment were documented in special forms designed by the ministry of health. In this descriptive-analytical study, necessary data were passively extract-

ed from the above-mentioned forms during 2006–2014. Data were later transferred to an excel spreadsheet and the related charts and tables were computed using this software.

Ethical consideration

This study has been ethically approved by the Infectious and Tropical Diseases Research Center of the Hormozgan University of Medical Sciences in Bandar Abbas, Iran. The confidentiality of the records of patients was assured.

Spatial analysis

Data on the cases of cutaneous leishmaniasis were identified in specific inhabited places of the villages displayed on the base maps provided by the National Cartography Organization. Shapefiles of the distribution of CL-positive cases were prepared and classified using ArcGIS 10.3. Raster layers of annual average of mean daily temperature ($^{\circ}\text{C}$) and relative humidity were prepared by Inverse Distance Weighted (IDW) analysis at spatial resolution of $50\text{m}^2/\text{pixel}$, using the data provided by different synoptic stations, including Jask and 8 other nearby cities. These data were collected by the National Meteorological Organization for research in the country.

Kriging and co-kriging are geostatistical techniques used for interpolation (mapping and contouring) purposes. Both methods are generalized forms of univariate and multivariate linear regression models, for estimation at a point, over an area, or within a volume. They are linear-weighted averaging methods, similar to other interpolation methods, however, their weights depend not only on distance but also on the direction and orientation of the neighboring data to the unsampled location. Co-kriging can be seen as a point interpolation, which requires a point map as input and which returns a raster map with estimations and optionally an error map. Co-kriging is a multivariate variant of the ordinary kriging operation: Co-kriging calculates estimates or

predictions for a poorly sampled variable (that we want to predict; in this study: CL cases) with help of a well-sampled variable (the co-variable). The variables should be highly correlated (positive or negative). Therefore, we used CL cases in the study area as sampled variable (17). Some variables such as mean temperature, total precipitation, altitude and Normalized Difference Vegetation Index (NDVI) were highly correlated with CL incidence. Therefore, we used the first three independent variables for prediction the risk of CL as dependent variable. The prediction map was classified using natural breaks into five classes for infection chance.

Results

A total of 874 CL cases were discovered by the health center of Jask district during the study period. The highly infected age group belonged to 10–19yr, with a frequency of 21.4% (Table 1). The majority of cases which reported from the 87 residential places came from the rural areas (91%). Analysis of the lesions on the different parts of the body showed 62.3% of the lesions occurred on the hand/foot, 28.6% were presented on the face, and 9.1% on the remaining parts of the body. The number of lesions present was also counter-checked, and most of the patients (56%) suffered one lesion each on their body, followed by two (22.4%), and more than 2 lesions (21.6%). Residents of rural areas of the county were more infected than those of urban areas, such that 91% of cases arose from the villages (Table 1).

Spatial distribution of CL cases across the area showed the highest morbidity in the southeastern regions (Fig. 2). Overall, the disease was recorded in 87 localities, including villages and some quarters of the urban centers.

Cokriging analysis involving altitude, mean monthly temperature and total annual precipitation variables showed a positive autocorrelation between the disease and the total

precipitation and altitude, as presented in the experimental semivariograms (Fig. 3). The distance where the model first flattens out is known as the range. Locations separated by distances closer than the range in Fig. 3 are spatially autocorrelated, whereas locations farther apart than range are not.

The prediction map indicated the eastern parts of Jask County, together with some northern areas of the county, are more susceptible to maintaining CL transmission (Fig. 4). To-

tally, 61 rural/urban areas were categorized as high-risk areas for CL transmission, with a total population of closely 18000. Conversely, more than a third of Jask County inhabitants are living in high-risk areas, while the risk of CL transmission is medium in more than 50 rural/urban areas. According to the model prediction for ZCL in villages of the study area, the highest probability of the disease has predicted for southeastern area, followed by southwestern and central parts (Fig. 5).

Table 1. Some demographic information of patients infected by cutaneous leishmaniasis in Jask County, Southeastern Iran, 2006–2014

Year	Gender		Age groups(yr)							Residence place	
	Female	Male	0–4	5–9	10–19	20–29	30–39	40–49	≤50	Urban	Rural
2006	106	115	49	36	56	30	12	14	11	14	207
2007	119	117	50	46	51	36	21	12	20	27	209
2008	83	112	36	43	49	27	13	9	19	14	182
2009	41	64	26	24	19	16	9	7	4	11	94
2010	13	26	7	10	6	11	2	2	1	2	37
2011	10	15	5	9	4	4	3	0	0	6	19
2012	0	7	1	0	3	1	0	1	1	0	7
2013	15	15	12	5	7	2	3	1	0	0	30
2014	10	6	1	6	5	0	1	1	2	4	12
Total	397	477	187	179	200	127	64	47	58	78	797

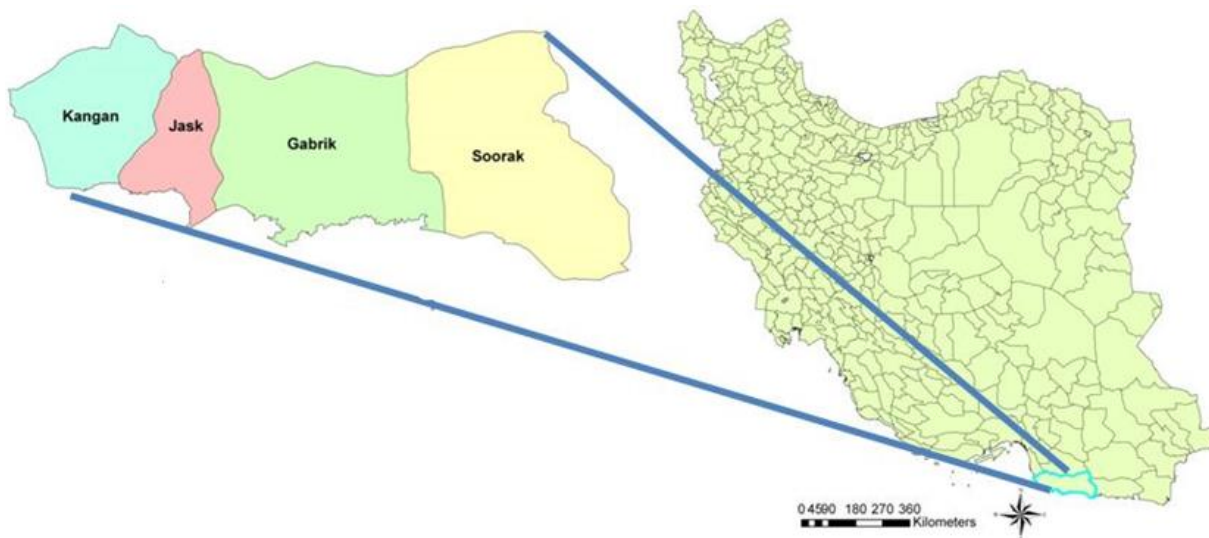


Fig. 1. Jask County in southeast of Iran

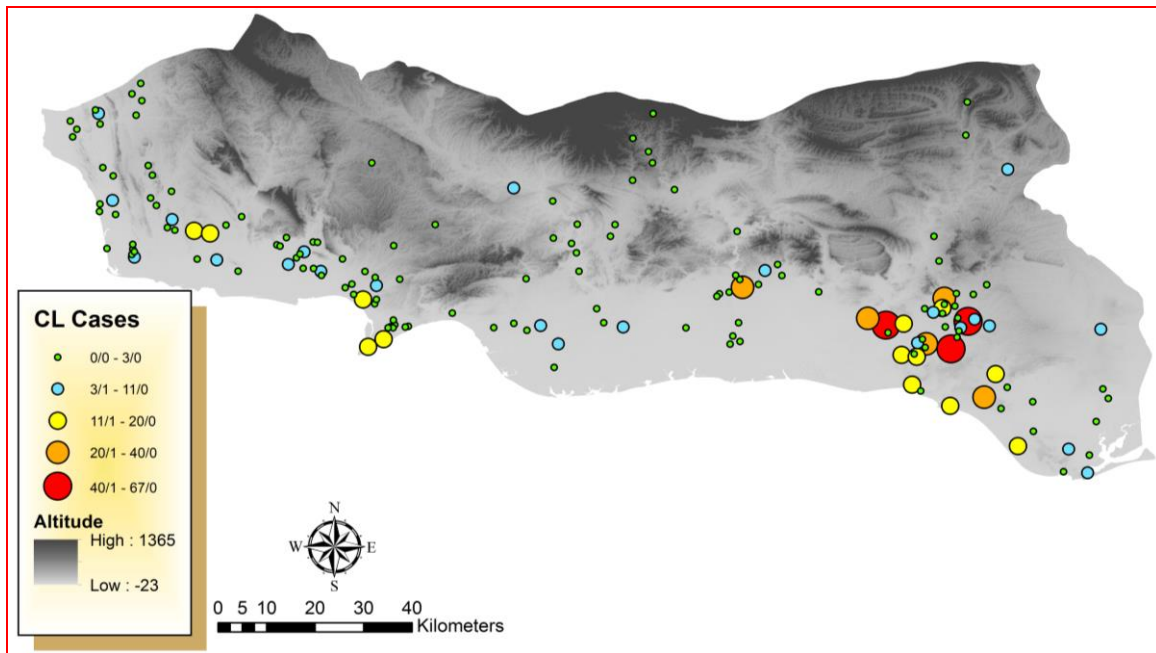


Fig. 2. Spatial distribution of cutaneous leishmaniasis in Jask County, Southeast of Iran

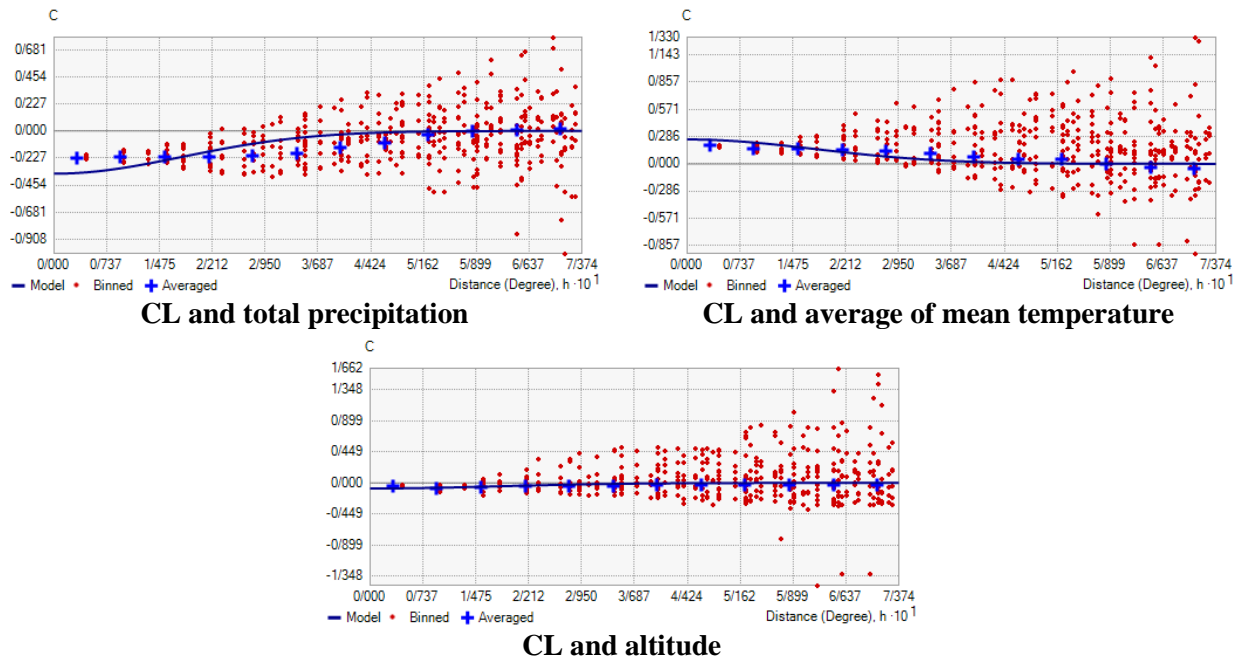


Fig. 3. Experimental anisotropic semivariograms for cutaneous leishmaniasis

X-axis is distance times 10^1 (in Degree), Y-axis is semivariance for CL cases located between specified distances

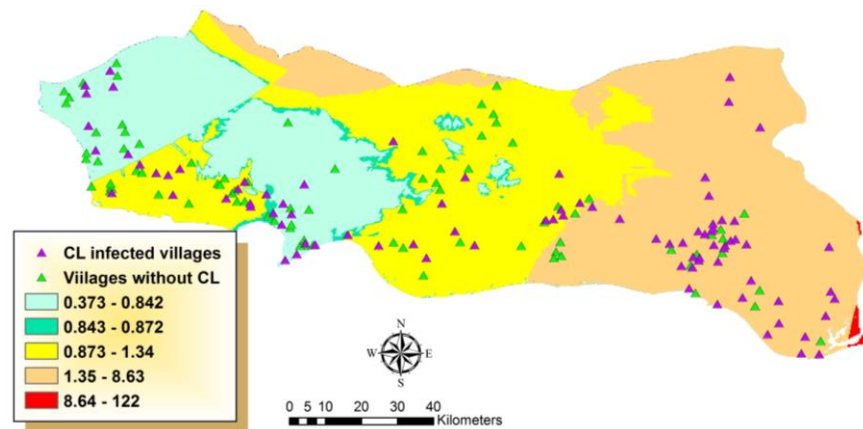


Fig. 4. Cokriging prediction for the risk of infection to cutaneous leishmaniasis in Jask County, Southeast of Iran

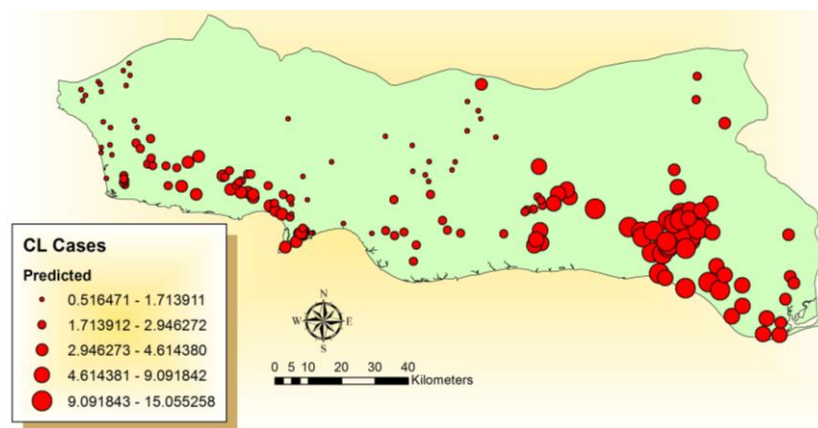


Fig. 5. Cokriging prediction for the risk of infection to cutaneous leishmaniasis in different villages of Jask County, Southeast of Iran

Discussion

Jask County, in the southeastern region of Iran, is an endemic focus of both malaria and leishmaniasis (18-21). Although in recent years few indigenous cases of malaria have been reported from this area, cutaneous leishmaniasis is the main vector-borne infectious disease with an estimated incidence of 162.5 per 100,000 population. From 2006 to 2009, the disease erupted into an epidemic condition in some areas of the county, however, this situation was brought under control which led to a decreasing trend in the incidence of the disease after the year 2009. Correspondingly, this decreasing trend was consistently observed na-

tionwide regarding CL infection in Iran (5). A major determinant contributing to this trend is drought, because of climate change (22), a problem experienced by the country for several years. Children were the most infected group in this county, as seen in other endemic foci of the disease throughout the country (5), and the commonly occurring cases were noticed in those belonging to 0–4 and 5–9 yr age groups.

The zoonotic form of cutaneous leishmaniasis has been known to be circulating in the Jask County, and *L. major* has been detected in the sand fly vector (*Ph. papatasi*) and gerbils (*Tatera indica* and *Gerbilus nanus*), as well

as human lesions (18, 19). This form of the disease has been reported in Baluchistan area, bordered to the east of our study area. Verily, ZCL transmission is extended from Baluchistan to Jask, following an epidemic which occurred in the 2000s in some counties of Baluchistan (from Dashtyari to Chabahar, and Konarak) (23). Another great concern in the epidemic of ZCL in Jask is that may occur because reducing vector control operations including indoor residual spraying (IRS) in the active foci following a sharp drop in malaria cases (11).

Water transfer project at Jagin Dam, in the north of Jask County, has been recently considered to develop agriculture in this county. Considering the living habitat of *T. indica*, the main reservoir of ZCL in the study nesting in barren lands around the crop fields, and the presence of suitable ecological niches for this species and other vectors in southern Iran (8, 9) a new upsurge of the disease should be expected because the lack of adequate attention to preparedness and mitigation. Our prediction for the risk of CL showed one-third of the landmass of the county has a higher potential for CL transmission. This is clear in our results whereby a population of about 18000 is living in 61 villages/urban areas which are at risk of ZCL infection.

Cokriging is an accurate method for spatial interpolation. Considering the co-variables that affect the transmission of a disease, targeting variables of the weather proven to correlate well with the disease transmission would be cost-effective, rather than focusing on field data collection and sampling. Previously, the transmission of ZCL was found to be dependent on a number of climatic factors including higher temperature, lower relative humidity, lower total rainfall, higher evaporation and lower number of rainy days (14, 24). Thus, this analysis was used to cross-correlate environmental variables with the records of CL in predicting high-risk areas. Experimental anisotropic semivariograms in our study showed in-

creasing trend between the disease occurrence with total precipitation, negative trend between CL occurrence and mean temperature, while for altitude it had no increase or decrease. Because the distances between sampling points had no significant differences regarding three environmental variables used in this study, there was no difference between sampling points (Fig. 3). By the way, this model predicted eastern regions of the Jask County are more vulnerable to establishing new endemic foci. Likewise, this method has been used to estimate the habitat suitability for *Ixodes scapularis*, the vector of Lyme disease (25), *Boophilus microplus*, a serious cattle pest (26), and dengue vector population (27).

Hence, this technique will be essential for later studies on leishmaniasis. According to the spatial correlation between three environmental variables used in this study, it is predicted cases of ZCL will increase in some villages of Jask County (Fig. 5). Besides, to prevent the disease expansion to the new areas, it is necessary to do some preventive measures such as community-based health education programs, environmental sanitation and personal protection against sand fly vectors.

Conclusion

Cutaneous leishmaniasis is an endemic disease in Jask County and should be considered by health sector authorities, particularly in high-risk areas explored in this study. Massive development projects begun in this area will provide job and trading activities for people emigrating from non-endemic areas of the, and from some other countries. This situation is likely to increase the morbidity associated with the disease due to the invasion of non-immunized immigrants. Therefore, preventive measures along with health education and promotion will help curtail the risk of infection and morbidity.

Acknowledgements

The authors are grateful to the staff of Jask District Health Center for the kind collaboration in this study. This study has been financially supported by Research Deputy, Hormozgan University of Medical Sciences, Bandar Abbas, Iran, with project No. 9163. The authors declare that there is no conflict of interests.

References

1. World Health Organization (2010) Control of the leishmaniasis. Report of a Meeting of the WHO Expert Committee on the Control of Leishmaniasis. WHO Technical Report Series. WHO, Geneva.
2. World Health Organization (2004) The world health report 2004. Changing history. WHO, Geneva.
3. Alvar J, Velez ID, Bern C, Herrero M, Desjeux P, Cano J, Jannin J, den Boer M (2012) Leishmaniasis worldwide and global estimates of its incidence. *PLoS One*. 7 (5): e35671.
4. Yaghoobi-Ershadi MR (2012) Phlebotomine sand flies (Diptera: Psychodidae) in Iran and their role on *Leishmania* transmission. *J Arthropod Borne Dis*. 6: 1–17.
5. Shirzadi MR, Esfahani SB, Mohebbali M, Yaghoobi-Ershadi MR, Gharachorlo F, Razavia MR, Postigo JA (2015) Epidemiological status of leishmaniasis in the Islamic Republic of Iran, 1983–2012. *East Mediterr Health J*. 21(10): 736–742.
6. Maroli M, Feliciangeli MD, Bichaud L, Charrel RN, Gradoni L (2013) Phlebotomine sandflies and the spreading of leishmaniasis and other diseases of public health concern. *Med Vet Entomol*. 27: 123–147.
7. Karimi A, Hanafi-Bojd AA, Yaghoobi-Ershadi MR, Akhavan AA, Ghezelbash Z (2014) Spatial and temporal distributions of phlebotomine sand flies (Diptera: Psychodidae), vectors of leishmaniasis, in Iran. *Acta Trop*. 132: 131–139.
8. Hanafi-Bojd AA, Yaghoobi-Ershadi MR, Haghdoost AA, Akhavan AA, Rassi Y, Karimi A, Charrahy Z (2015) Modeling the distribution of cutaneous leishmaniasis vectors (Psychodidae: Phlebotominae) in Iran: A potential transmission in disease prone areas. *J Med Entomol*. 52(4): 557–565.
9. Gholamrezaei M, Mohebbali M, Hanafi-Bojd AA, Sedaghat MM, Shirzadi MR (2016) Ecological Niche Modeling of main reservoir hosts of zoonotic cutaneous leishmaniasis in Iran. *Acta Trop*. 160: 44–52.
10. Azizi K, Moemenbellah-Fard MD, Fakoorziba MR, Fekri S (2011) *Gerbillus nanus* (Rodentia: Muridae): a new reservoir host of *Leishmania major*. *Ann Trop Med Parasitol*. 105(6): 431–437.
11. Nadim A, Javdian E, Mohebbali M, Momeni AZ (2009) *Leishmania* parasite and Leishmaniasis. 3rd ed. Markaz Nashr Daneshgahi Press, Tehran.
12. Yaghoobi-Ershadi MR, Zahraei-Ramezani AR, Akhavan AA, Jalali-Zand AR (2005) Rodent control operations against zoonotic cutaneous leishmaniasis in rural Iran. *Ann Saudi Med*. 25 (4): 309–312.
13. Ali-Akbarpour M, Mohammadbeigi A, Tabatabaee SH, Hatam G (2012) Spatial analysis of eco-environmental risk factors of cutaneous leishmaniasis in southern Iran. *J Cutan Aesthet Surg*. 5: 30–35.
14. Seid A, Gadisa E, Tsegaw T, Abera A, Mulugeta A, Herrero M, Argaw D, Jorge A, Kebede A, Aseffa A (2014) Risk map for cutaneous leishmaniasis in Ethiopia based on environmental fac-

- tors as revealed by geographical information systems and statistics. *Geospatial Health*. 8(2): 377–387.
15. Mollalo A, Alimohammadi A, Shahrisvand M, Shirzadi MR, Malek MR (2014) Spatial and statistical analyses of the relations between vegetation cover and incidence of cutaneous leishmaniasis in an endemic province, northeast of Iran. *Asian Pac J Trop Dis*. 4(3): 176–180.
 16. Mollalo A, Alimohammadi A, Shirzadi MR, Malek MR (2015) Geographic information system-based analysis of the spatial and spatio-temporal distribution of zoonotic cutaneous leishmaniasis in Golestan Province, north-east of Iran. *Zoonoses Public Health*. 62(1): 18–28.
 17. Johnston K, Ver Hoef JM, Krivoruchko K, Lucas N (2001) *Using ArcGIS geostatistical analyst* (Vol. 380). ESRI Press, Redlands: California, p. 316.
 18. Azizi K, Davari B, Kalantari M, Fekri S (2011) Gerbillidae rodents fauna (Muridae: Gerbillinae) and detection of reservoir hosts(s) of zoonotic cutaneous leishmaniasis using a Nested-PCR technique in Jask City in Hormozgan Province in 2008. *Kordestan Univ Med J*. 16: 66–76.
 19. Azizi K, Kalantari M, Fekri S (2011) The Nested-PCR based detection of cutaneous leishmaniasis vectors in Jask County, Hormozgan, Iran. *Iran J Epidemiol*. 7(3): 27–33.
 20. Fekri S, Vatandoost H, Daryanavard A, Shahi M, Raeisi A, Omar AS, Sharif M, Safari R, Azizi A, Ali AA, Nasser A, Hasaballah I, Hanafi-Bojd AA (2014) Malaria situation in an endemic area, Southeastern Iran. *J Arthropod-Borne Dis*. 8: (1): 82–90.
 21. Yeryan M, Basseri HR, Hanafi-Bojd AA, Raeisi A, Edalat H, Safari R (2016) Bio-ecology of malaria vectors in an endemic area, Southeast of Iran. *Asian Pac J Trop Med*. 9(1): 32–38.
 22. Patz JA, Graczyk TK, Geller N, Vittor AY (2000) Effects of environmental change on emerging parasitic diseases. *Int J Parasit*. 30: 1395–1405.
 23. Kassiri H, Javadian E, Abdigoudarzi M (2011) Natural *Leishmania* Infection in *Meriones hurrianae* and *Tatera indica* (Rodentia: Cricetidae: Gerbillinae) in Sistan-Baluchistan Province, South-Eastern of Iran. *Adv Stud Biol*. 3(6): 247–256.
 24. Shirzadi MR, Mollalo A, Yaghoobi-Ershadi MR (2015) Dynamic relations between incidence of zoonotic cutaneous leishmaniasis and climatic factors in Golestan Province, Iran. *J Arthropod-Borne Dis*. 9(2): 148–160.
 25. Estrada-Pena A (2001) Climate warning and changes in habitat suitability for *Boophilus microplus* (Acari: Ixodidae) in Central America. *J Parasitol*. 87 (5): 978–987.
 26. Estrada-Pena A (1998) Geostatistics and remote sensing as predictive tools of tick distribution: a cokriging system to estimate *Ixodes scapularis* (Acari: Ixodidae) habitat suitability in the United States and Canada from advanced very high resolution radiometer satellite imagery. *J Med Entomol*. 35(6): 989–995.
 27. Azil AH, Bruce D, Williams CR (2014) Determining the spatial autocorrelation of dengue vector populations: influences of mosquito sampling method, covariables, and vector control. *J Vec Ecol*. 39(1): 153–163.