

## High Prevalence of Y Chromosome Partial Microdeletions in Overweight Men

Atefeh Biabangard zak, Masoud Golalipour \*, and Gholamreza Hadadchi

Department of Biology, School of Basic Sciences, Golestan University, Gorgan, Iran

## Abstract

**Background:** Microdeletions of the Y chromosome are one of the most frequent genetic causes of spermatogenic failure in infertile men. But their role in gaining weight is unclear. The present study investigated the possible association of these partial microdeletions and obesity.

**Methods:** In a case-control study, 180 males were selected. The prevalence of microdeletions was assessed using PCR in AZFc area of Y chromosome and statistical analysis was done using the Fisher exact test and Pearson correlation.

**Results:** In our study, inverse relationship was observed between body mass index and testosterone level (p-value: 0.005). Fisher exact tests showed that there was a significant association between *gr/gr* mutation and BMI (p-value: 0.044).

**Conclusion:** Our study revealed that Y chromosome microdeletions are more common in obese men. Furthermore, microdeletions such as *gr/gr*, which were observed in normal men, could cause decreased testosterone level. So, they may contribute to gaining weight.

Avicenna J Med Biotech 2015; 7(3): 97-100

\* Corresponding author:  
Masoud Golalipour Ph.D.,  
Department of Biology, School  
of Basic Sciences, Golestan  
University, Gorgan, Iran  
Tel: +98 171 2245964  
E-mail:  
m.golalipour@gu.ac.ir  
Received: 9 Dec 2014  
Accepted: 18 Mar 2015

**Keywords:** Obesity, Testosterone, Y chromosome microdeletions

## Introduction

The absolute number of obese individuals is estimated to be totally 2.16 billion ones and 1.12 billion by the year 2030<sup>1</sup>. So, it's important to find the most common causes of this major challenge. Obesity results from combination of environmental and genetic factors<sup>2</sup>. Despite extensive studies on the genes involved in obesity, the Y chromosome genes are largely ignored. Even in studies of genome-wide scans, the Y chromosome is excluded<sup>3</sup>.

MSY region on the Y chromosome is divided into three parts: AZFa, AZFb, and AZFc<sup>4</sup>. The AZFc region has 12 genes. Complete removal of this region, which eliminates 5.3 Mb, is the most common pattern among infertile men with Y chromosome deletions. In addition, partial microdeletions such as *gr/gr* or *b1/b3* exist in this region<sup>5-7</sup>. Partial microdeletions are seen in both infertile and normal men and their role is unclear in fertility<sup>8</sup>.

Partial microdeletions remove parts of the AZF region with no significant impact on fertility, but they may have side effects such as decreased androgen level and increased BMI. In this study, the association between obesity and partial microdeletions of the Y chromosome was investigated.

## Materials and Methods

## Study population

A case-control study was performed with 180 participants from Golestan Province (138 cases and 42

controls). The data were collected from 2011 to 2012. Ten to eighty year old men were selected. Samples younger or older than this age range were excluded. The study protocol was approved by the Ethics Committee of the Golestan University (Golestan, Iran) and informed consent was collected from participants prior to recruitment.

## Anthropometric measurements

Using a digital scale, participants' weight was measured with a precision of 0.1 kg. Height was measured in centimeter with an accuracy of a decimal point. The body mass index calculated as weight in kilograms was divided by the square of the height in meters ( $kg/m^2$ )<sup>9</sup>. The subjects were divided into three categories according to Body Mass Index (BMI)<sup>10</sup>: Normal weight ( $18.5 < BMI \leq 24.9$ ), overweight ( $25 < BMI \leq 30$ ) and obese ( $BMI > 30$ ). Testosterone level was measured using ELISA kits (Mono-bind). Next, 2.5 ml of blood was stored in a refrigerator at 4 °C for molecular assay.

## Genotyping

Genomic DNA was extracted using standard phenol-chloroform method. Samples were centrifuged at 3000 RPM for 10 min at room temperature within 1 hr of collection. Plasma and red blood cells were separated and stored at 70°C. Amplification of the AZF region of the Y chromosome was performed using forward and reverse primers (Table 1).

To figure the AZF microdeletions, first PCR was conducted in two multiplexes:

Table 1. The appendix sequence of PCR primers

ZFY-F	5' - ACC RCT GTA CTG ACT GTG ATT ACA C - 3'
ZFY-R	5' - GCA CYT CTT TGG TAT CYG AGA AAG T - 3'
SRY-F	5' - GAA TAT TCC CGC TCT CCG GA - 3'
SRY-	5' - GCT GGT GCT CCA TTC TTG AG - 3'
sY86-	5' - GTG ACA CAC AGA CTA TGC TTC - 3'
sY86-	5' - ACA CAC AGA GGG ACA ACC CT - 3'
sY127-F	5' - GGC TCA CAA ACG AAA AGA AA - 3'
sY127-R	5' - CTG CAG GCA GTA ATA AGG GA - 3'
sY254-F	5' - GGG TGT TAC CAG AAG GCA AA - 3'
sY254-R	5' - GAA CCG TAT CTA CCA AAG CAG C - 3'
sY84-F	5' - AGA AGG GTC TGA AAG CAG GT - 3'
sY84-R	5' - GCC TAC TAC CTG GAG GCT TC - 3'
sY134-F	5' - GTC TGC CTC ACC ATA AAA CG - 3'
sY134-R	5' - ACC ACT GCC AAA ACT TTC AA - 3'
sY255-F	5' - GTT ACA GGA TTC GGC GTG AT - 3'
sY255-R	5' - CTC GTC ATG TGC AGC CAC - 3'
sY1191-F	5' - CCA GAC GTT CTA CCC TTT CG - 3'
sY1191-R	5' - GAG CCG AGA TCC AGT TAC CA - 3'
sY1291-F	5' - TAA AAG GCA GAA CTG CCA GG - 3'
sY1291-R	5' - GGG AGA AAA GTT CTG CAA CG - 3'

**Multiplex A:** ZFY: 495 bp, sY84: 326 bp (AZFa), sY134: 301 bp (AZFb), sY255: 126 bp (AZFc)  
**Multiplex B:** SRY: 472 bp, sY254: 400 bp (AZFc), sY86: 320 bp (AZFa), sY127: 274 bp (AZFb)

PCR was carried out in 25 µl reaction volume containing each primer 1 µM, 2.5 µM enzyme buffer, 2 µM MgCl<sub>2</sub>, 1 µM dNTP mix and, 0.2 µM Tag enzyme. Then, the extracted DNA was added to 1 µM in 25 µl total volume (all materials from TaKaRa, Seoul, Korea). Reactions were amplified by these steps: initial denaturation at 94 °C for 5 min, followed by 30 cycles of denaturation at 94 °C for 20 s, annealing at 57 °C for 5 min, extension at 72 °C for 45 s, followed by a final extension at 72 °C for 5 min. PCR products were separated by electrophoresis on a 1.5% agarose gel and visualized by staining with ethidium bromide under ultraviolet light.

After determining the AZF deletions, samples with complete AZF deletion were discarded and individuals who did not carry AZF microdeletions were screened for partial AZFc microdeletions. Each individual was screened with two STSs specific for the *gr/gr* region, sY1291 and sY1191.

The second amplification program included an initial denaturation step at 94 °C for 5 min, amplification for 30 sequential cycles, each including 30 s denaturation at 94 °C, 30 s annealing at 51 °C and 1 min extension at 72 °C and a final extension step at 72 °C for 5 min.

**Statistical analysis**

The Kolmogorov-Smirnov test was used to test the

normality of the data. Data were expressed as mean± standard deviation (SD). To compare the results, Fisher exact tests and the Pearson correlation were used. SPSS (SPSS version 16, SPSS Inc., Chicago, USA) was used for data analysis. A p-value of 0.05 was considered as the threshold significance level for each test.

**Results**

One hundred and eighty subjects were screened for Yq microdeletions. The study population comprised 44 obese, 94 overweight and 42 normal men. Clinical and anthropometric parameters were determined (Table 2).

The Pearson correlation was used to compare testosterone level with BMI. A significant relationship was observed between this hormone and BMI (p-value: 0.005). Samples with lower testosterone levels were obese or overweight.

PCR was performed with eight pairs of primers for all samples (Figure 1). Samples which had a complete microdeletion were discarded (Table 3). To find partial microdeletions, PCR was conducted with sY1191 and sY1291 primers on the rest of the samples (Figures 2 and 3).

In the study, 8 overweight and 5 obese men carrying the *gr/gr* deletion (13/150, 9.3%) were recognized. Two cases with b2/b3 deletion were observed in the normal population, and in overweight and obese groups, 5 and 2 cases were detected with b2/b3

Table 2. Clinical and anthropometric variables in study groups

	Normal	Overweight	Obese	Total
<b>BMI</b>	23.16±2.17	27.87±1.37	34.93±4.75	27.34±4.65
<b>Testosterone</b>	4.65±1.56	4.41±1.5	3.75±1.35	4.38±1.51
<b>Age</b>	43.4±14.66	42.59±14.06	48.17±15.1	43.8±14.5

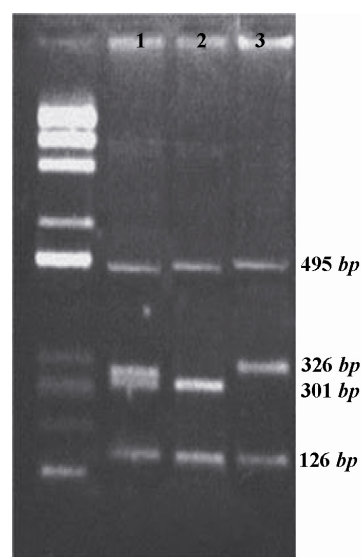


Figure 1. Multiplex PCR, first lane is a 100 bp DNA ladder. Lane 1 doesn't have any deletion. Lane 2 has sY84 deletion and lane 3 has sY134 deletion.

Table 3. Frequency of Y chromosome microdeletion (in AZF regions) in study population

Deletion	Frequency
AZFa	7 (3.8%)
AZFb	9 (4.9%)
AZFc	14 (7.6%)

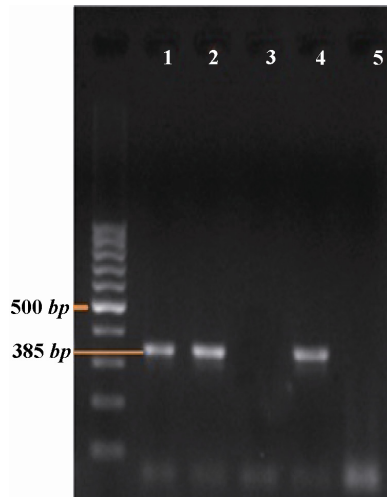


Figure 2. PCR by sY1191 primer. Number 3 and 5 samples have b2/b3 deletion.

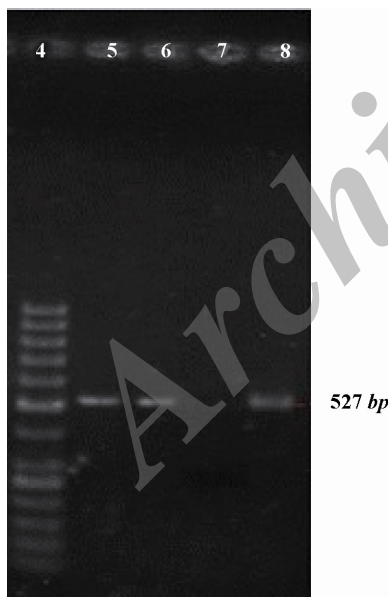


Figure 3. PCR by sY1291 primer. Sample number 7 has a *gr/gr* deletion

deletion, respectively. Only one case with b1/b3 deletion was found in the obese group (Table 4).

Fisher exact tests showed that there was a significant association between *gr/gr* mutation and BMI (p-value: 0.044, OR 0.27, 95% CI 0.03-2.18). But b1/b3 and b2/b3 deletions showed no significant correlation to BMI (Table 5).

Table 4. Frequency of Y chromosome partial microdeletions in different groups

	<i>gr/gr</i>	<i>b2/b3</i>	<i>b1/b3</i>	Total partial AZFc microdeletions
Normal	2	0	0	2
Overweight	5	8	0	13
Obese	2	5	1	8
Total	9(6%)	13(8.6%)	1(0.7%)	23 (15.3%)

Table 5. Correlation of BMI with partial AZFc microdeletions of Fisher exact test

Deletion	P-value
<i>gr/gr</i>	0.044
<i>b2/b3</i>	0.31
<i>b1/b3</i>	0.47
Total ( <i>gr/gr</i> , <i>b2/b3</i> and <i>b1/b3</i> )	0.25

### Discussion

This study demonstrated that the Y chromosome microdeletions are more common in obese men. Also, with increasing age and BMI in men, testosterone levels decline. Epidemiologic studies have shown that a bidirectional relation exists between obesity and testosterone level<sup>11-13</sup>. Because of such relationship between weight gain and testosterone level, administration of this hormone for losing weight in men is considered as a therapeutic approach<sup>14,15</sup>. Excess aromatase activity in adipose tissue could decrease testosterone and increase estrogen level<sup>11</sup>. Some studies demonstrate that aromatase inhibition is an effective means in increasing testosterone production in elderly men with low or borderline low serum testosterone levels<sup>16,17</sup>.

From the past, the role of AZF region in infertility is always emphasized<sup>8</sup>. But in this study, regardless of Y chromosome microdeletions' role in infertility, their association with weight gain and obesity was investigated. One of the most common deletions in the AZF region is a complete AZFc deletion which leads to infertility. The complete removal of this region deletes all DAZ (deleted in azoospermia) gene copies and 21 other transcription units. Consequently, it may decrease testosterone level which leads to an increase in BMI. Smaller deletions, such as *gr/gr*, exist in AZF area, known as partial microdeletions. Partial microdeletions are found in infertile and fertile men as well. So, their role in infertility still remains controversial. The present study shows a significant association between *gr/gr* deletion and BMI. It seems that overweight men have a higher incidence of partial microdeletions compared to normal men.

### Conclusion

In conclusion, besides complete AZFc deletions, partial microdeletions such as *gr/gr* have also occurred in men. These partial microdeletions may exert effects

which lead to low levels of testosterone. Our study showed that partial AZFc deletions could increase the risk of obesity in men. Long term studies are needed to assess the overall consequences of these Y chromosome microdeletions in obese men.

#### Acknowledgement

We thank Dr Sepehri (Sepehr Laboratory, Golestan, Iran) and Abbas Gharib for providing samples for our study. The authors thank Maryam Mardannik, Raziieh Ardameh for their support. We appreciate all the DNA donors and patients without whom this work would not have been possible.

#### Conflict of Interest

The authors declare that there is no conflict of interests.

#### References

- Blakemore AI, Froguel P. Is obesity our genetic legacy? *J Clin Endocrinol Metab* 2008;93(11 Suppl 1):S51-56.
- Tarnoki AD, Tarnoki DL, Medda E, Cotichini R, Stazi MA, Fagnani C, et al. Bioimpedance analysis of body composition in an international twin cohort. *Obes Res Clin Pract* 2014;8(3):e201-298.
- Rankinen T, Zuberi A, Chagnon YC, Weisnagel SJ, Argyropoulos G, Walts B, et al. The human obesity gene map: the 2005 update. *Obesity (Silver Spring)* 2006;14(4):529-644.
- Vogt PH, Edelmann A, Kirsch S, Henegariu O, Hirschmann P, Kiesewetter F, et al. Human Y chromosome azoospermia factors (AZF) mapped to different sub-regions in Yq11. *Hum Mol Genet* 1996;5(7):933-943.
- Imken L, El Houate B, Chafik A, Nahili H, Boulouiz R, Abidi O, et al. AZF microdeletions and partial deletions of AZFc region on the Y chromosome in Moroccan men. *Asian J Androl* 2007;9(5):674-678.
- Hucklenbroich K, Gromoll J, Heinrich M, Hohoff C, Nieschlag E, Simoni M. Partial deletions in the AZFc region of the Y chromosome occur in men with impaired as well as normal spermatogenesis. *Hum Reprod* 2005;20(1):191-197.
- Lardone MC, Parodi DA, Ebensperger M, Peñaloza P, Cornejo V, Valdevenito R, et al. AZFc partial deletions in Chilean men with severe spermatogenic failure. *Fertil Steril* 2007;88(5):1318-1326.
- Ferlin A, Tessari A, Ganz F, Marchina E, Barlati S, Garolla A, et al. Association of partial AZFc region deletions with spermatogenic impairment and male infertility. *J Med Genet* 2005;42(3):209-213.
- Banegas JR, Gutiérrez-Fisac JL, Rodríguez-Artalejo F, Cruz JJ, Guallar P, Herruzo R. Obesity and body mass index in Spain: the 'single population' theory revisited. *Eur J Clin Nutr* 2001;55(9):782-785.
- Arderm CI, Janssen I, Ross R, Katzmarzyk PT. Development of health-related waist circumference thresholds within BMI categories. *Obes Res* 2004;12(7):1094-1103.
- Wang C, Jackson G, Jones TH, Matsumoto AM, Nehra A, Perelman MA, et al. Low testosterone associated with obesity and the metabolic syndrome contributes to sexual dysfunction and cardiovascular disease risk in men with type 2 diabetes. *Diabetes Care* 2011;34(7):1669-1675.
- Stewart TM, Liu DY, Garrett C, Jørgensen N, Brown EH, Baker HW. Associations between andrological measures, hormones and semen quality in fertile Australian men: inverse relationship between obesity and sperm output. *Hum Reprod* 2009;24(7):1561-1568.
- MacDonald AA, Herbison GP, Showell M, Farquhar CM. The impact of body mass index on semen parameters and reproductive hormones in human males: a systematic review with meta-analysis. *Hum Reprod Update* 2010;16(3):293-311.
- Mårin P, Holmång S, Gustafsson C, Jönsson L, Kvist H, Elander A, et al. Androgen treatment of abdominally obese men. *Obes Res* 1993;1(4):245-251.
- Jones TH, Saad F. The effects of testosterone on risk factors for, and the mediators of, the atherosclerotic process. *Atherosclerosis* 2009;207(2):318-327.
- Tsui S, Dai T, Warren ST, Salido EC, Yen PH. Association of the mouse infertility factor DAZL1 with actively translating polyribosomes. *Biol Reprod* 2000;62(6):1655-1660.
- Leder BZ, Rohrer JL, Rubin SD, Gallo J, Longcope C. Effects of aromatase inhibition in elderly men with low or borderline-low serum testosterone levels. *J Clin Endocrinol Metab* 2004;89(3):1174-1180.