

Association of *hp1181* and *hp1184* Genes With the Active Efflux Phenotype in Multidrug-Resistant Isolates of *Helicobacter pylori*

Tahereh Falsafi,^{1*} Azadeh Ehsani,¹ Bahareh Attaran,¹ and Vahid Niknam²

¹Department of Microbiology, Faculty of Biological Sciences, Alzahra University, Tehran, IR Iran

²School of Biology, Tehran University, Tehran, IR Iran

*Corresponding author: Tahereh Falsafi, Department of Microbiology, Faculty of Biological Sciences, Alzahra University, Tehran, IR Iran. Tel/Fax: +98-2188058912, E-mail: falsafi.tahereh@yahoo.com

Received 2015 June 14; Revised 2015 October 29; Accepted 2015 December 23.

Abstract

Background: During the last decades the rate of multidrug resistance among clinical *Helicobacter pylori* isolates has increased. Active pumping out of the drugs may be an important mechanism for multidrug resistance in *H. pylori* strains.

Objectives: The aim of this study was to evaluate the association of two *H. pylori* efflux-genes, *hp1181* and *hp1184* with the active-efflux phenotype in MDR clinical-strains of *H. pylori*.

Materials and Methods: Minimal inhibitory concentration (MIC) and drug accumulation for β -lactames, Tetracycline (TET), Erythromycin (ERY), Metronidazole (MTZ), Ciprofloxacin (CIP) and Ethidium Bromide (EtBr) was performed in the presence and absence of carbonyl cyanide M-Chlorophenyl Hydrazone (CCCP). Presence of *hp1181* and *hp1184* genes was detected by the polymerase chain reaction (PCR). Real Time (RT)-PCR was performed to compare expression of efflux genes by MDR strains, demonstrating active efflux with the strains without active efflux.

Results: Two- to four-fold decrease in minimum inhibitory concentration (MIC) and two-fold increase in accumulation were observed for EtBr in the presence of CCCP for 67% (8) of 12 MDR strains. With CCCP, two- to four-fold decrease in MIC and 1.4- to 1.8-fold increase in the accumulation of β -lactames, TET, CIP and MTZ were obtained for 42% (5) of the MDR strains. Six, five and three of the 12 MDR strains amplified *hp1184*, *hp1181*, and both of them, respectively. The RT-PCR product for expression of *hp1181* by MDR strains was approximately 100 bp shorter than that of the 26695 susceptible standard strain.

Conclusions: Expression of the genes *hp1184* and *hp1181* are associated with the specific active efflux of EtBr and non-related antibiotics, respectively. For displaying these phenotypes, a post-transcriptional regulation step may be required.

Keywords: Efflux, Multidrug-resistant, *hp1184*, *hp1181*, *Helicobacter pylori*

1. Background

Helicobacter pylori infection in humans is associated with the development of numerous gastric pathologies such as peptic ulcer, chronic gastritis and gastric cancer. Once established, the infected individuals carry *H. pylori* in their stomach yet if untreated with antibiotics, they can persist in the body for a lifetime. During the last decade, the rate of multidrug resistance among clinical *H. pylori* isolates has increased, which could be a result of widespread and non-appropriate use of various antibiotics (1, 2). By evaluation of resistance to clarithromycin, metronidazole, quinolones, amoxicillin and tetracycline, the investigators found that point mutations, redox intracellular potential, efflux pump systems and membrane permeability were the most common mechanisms of resistance in *H. pylori* (3).

Among the mechanisms involved in multidrug-resistance, active pumping out of the drugs by efflux pumps may be an important mechanism by which the

gram negative bacteria may be protected from toxic effects of antibiotics (4-6). In general, the efflux pumps of gram-negative bacteria consist of an inner-membrane pump, a periplasmic adaptor protein and an outer-membrane channel in which the first one (inner membrane protein) acts with the second (periplasmic protein) and third (outer membrane protein). These efficiently structured complexes can cause the multidrug-resistance phenotype, which provides an efficient means for the export of structurally unrelated drugs (7, 8).

By analyzing *H. pylori* 26695 genome, 27 putative translocase have been identified that include ATP-Binding cassette (ABC) super family, major facilitator super family (MFS), resistance-nodulation-cell division (RND) family and multidrug and toxic compound extrusion (MATE) proteins (9). One of such translocases, which is found in *H. pylori* 26695 genome is *hp1184* that belong to the MATE family (10). As proposed by Van Amsterdam et al., and Johnson et al., mutation in *hp1184* can result in the susceptibility of *H.*

pylori to EtBr (8, 9). *hp1181* is another putative translocase, which may be related to the major facilitator super family. Analysis of *hp1181* gene product in *H. pylori* has revealed that *hp1181* could be an integral membrane protein, which can contribute to resistance via a multi-drug resistance efflux protein (11, 12).

2. Objectives

The results of each basic study on the mechanisms of multidrug resistance in the case of *H. pylori* may be beneficial for designing more suitable antibiotic combinations for successful treatment of infection. The aim of the present study was to evaluate the association between presence of two predicted efflux-related genes, *hp1181* and *hp1184*, in MDR clinical strains of *H. pylori* and their role in the active-efflux of antibiotics.

3. Materials and Methods

3.1. Bacterial Strains and Culture Conditions

The MDR strains employed in this study were selected from screening of the *H. pylori* strains isolated by culturing of biopsy specimens from children admitted to the medical center of Tehran for peptic disease problem (13). The isolated strains were plated onto modified Campy blood agar containing brucella agar base (Merck, Germany), supplemented with 5% defibrinated sheep blood and antibiotics. The plates were incubated at 37°C under microaerophilic atmosphere for three to seven days. The grown colonies were identified by Gram staining, standard biochemical tests and PCR using *H. pylori* specific primers for *16S rRNA* and *ureC* (14, 15). *Helicobacter pylori* strain 26695 (from CNRS, Bordeaux, France) for which complete sequence and predicted proteins are available, was used as a positive control for presence of genes studied in PCR analysis (12). ATCC43504 strains (from CNRS, Bordeaux, France) was the reference strain for quality control of antibiotic susceptibility testing (16).

3.2. Determination of Minimum Inhibitory Concentration for Ethidium Bromide

Determination of minimal inhibitory concentration (MIC) for Ethidium Bromide (EtBr) was performed by the disc diffusion method. For this purpose, three-day-old bacterial cultures with a Mc-Farland opacity of 2.0 were cultured on Muller Hinton agar (Merck, Germany) plates supplemented with 7% fresh sheep blood. Plates were dried for five minutes, and the blank discs containing EtBr (Merck, Germany), with concentration of 4 to 64 µg/mL

were placed on their surfaces; the inhibition zones of resistant strains were compared with the susceptible ones (13). The cut off for MIC determination of EtBr was considered 4 µg/mL.

3.3. Selection of Multi-Drug Resistant Strains

To select the MDR-strains, *H. pylori* isolates were screened for resistance to Amoxicillin (AMX), Ampicillin (AMP), Ciprofloxacin (CIP), Erythromycin (ERY) (Zakaria and Exir, Iran), Metronidazole (MTZ), and Tetracycline (TET) (Sigma, USA), using the minimal inhibitory concentration method. For this purpose, plates were prepared with Mueller Hinton (Merck, Germany) agar plus 7% fresh sheep blood and an appropriate concentration of antibiotics from 0.5 to 64 µg/mL. The plates containing antibiotics were then spread with bacterial suspension and incubated for two to three days at 37°C under microaerobic conditions. The cut off values for MIC determination was 4, 4, 4, 4, 8 and 8 µg/mL for AMP, AMX, TET, CIP, MTZ and ERY, respectively, according to the breakpoints previously described (13, 16). The MIC for all strains was compared in the presence and absence of CCCP, as previously described (13, 16, 17).

3.4. Measurement of Antibiotics and EtBr Accumulation

Accumulation assays were performed according to a previously described protocol with some modifications (13). Briefly, *H. pylori* strains were grown on campy blood agar for two days harvested and resuspended in pre-warmed brucella broth (37°C) to an optical density of 0.5. The cell suspension was incubated for 10 minutes at 37°C, and then centrifuged, washed and resuspended in 15 mM sodium phosphate buffer (pH 7.2). Uptake assays were initiated by the addition of an antibiotic or EtBr to the bacterial cell suspension at a final concentration of 10 µg/mL. Eight minutes after antibiotic or EtBr addition, CCCP was added to one-half of the reaction mixture at a final concentration of 200 µM and the other half was used as the control. After 15 minutes, each of the collected samples were placed at 4°C for one minute (to stop the function of the efflux pumps), centrifuged at 6000 g for 15 minutes, and the supernatants were used to measure the fluorescence of the respective antibiotics with a Shimadzu RF 5000 spectrofluorometer (Shimadzu scientific instruments) at excitation and emission wavelengths of 400 and 450 for AMP, AMX and TET; 300 and 350 for ERY; 279 and 447 for CIP; and 544 and 590 for EtBr, respectively. These wavelengths have previously been selected by testing various experimental conditions (13).

The pellet was used for measurement of the dry weight of bacteria by subtracting the initial weight of the cell-

containing vial. Concentration of antibiotics in the supernatants were calculated using a standard curve of the respective antibiotics (concentration ranging from 100 to 1000 ng) in 0.1 M of glycine hydrochloride pH 3.0. The results were expressed as ng of antibiotics and EtBr per mg (dry wt) of bacteria.

3.5. Polymerase Chain Reaction

DNA was extracted using the phenol-chloroform method, as previously described (14). Based on the sequence alignments of the genes from *H. pylori* 26695 strain in gene bank, specific *hp1181* primers were designed as follow: F, 5'AAG AAG AAG AGC GCA CCAA3' and R, 5'GCT CTA AGG TGG CAA AAC C3'. These PCR primers were predicted to amplify a 579-bp amplicon. The reaction consisted of 32 cycles, with each cycle composed of one minutes at 95°C, three minutes at 60°C and four minutes at 72 °C. After a final extension of 15 minutes at 72°C, the amplicons were electrophoresed on 1.2% agarose gel. The gene specific *hp1184* primers were prepared according to the primers described by Van Amsterdam as follow: F, 5'ACG CTC TAG ACT CAA AGC ACG GCA GAA TTT3'; R, 5'ACG CCT CGA GGA ACT TTT GGT GCG TTG GAT3', which predicted to amplify a 445-bp amplicon. The reaction consisted of 32 cycles, with each cycle composed of one minute at 95°C, four minutes at 59°C and seven minutes at 72°C. For each PCR reaction, a PCR control without template DNA was used. After a final extension of 15 minutes at 72°C, the amplicons were electrophoresed on 1.2% agarose gel (7).

3.6. Evaluation of *hp1181* gene expression by Real Time-Polymerase Chain Reaction

Real time-polymerase chain reaction (RT-PCR) was performed to compare the difference in expression of *hp1181* between 26695 susceptible (standard) strain and MDR clinical strains. For this purpose, the concentration of high-pure RNA, prepared according to the manufacturer's recommendations (Roche, Germany), was measured at 260 nm and the cDNA was synthesized using first-strand cDNA synthesis kit for RT-PCR (Roche, Germany). The reaction for cDNA synthesis was held at 25°C for ten minutes, 42°C for 60 minutes and 99°C for five minutes, followed by PCR as described above. The RT-PCR-products were visualized by electrophoresis on 1% agarose gel and 15% acrylamide gel with a 100-bp ladder size-marker (Cinnagene, Iran). The RT-PCR analysis of *hp1181* was performed for MDR strains, susceptible and 26695 *H. pylori* strains. The size of products for the 26695 susceptible strain was compared with that of MDR strains and was calculated by comparison with standard of MW. This reaction was repeated two times.

4. Results

Multi-resistance or resistance patterns of the strains, according to previously described representation (12), are shown in Table 1. These MDR strains have been classified into three groups, according to their behavior toward active efflux inhibition by CCCP. As demonstrated in Table 2, in the presence of CCCP, the MICs of eight MDR strains to EtBr was decreased by two to four folds; five of them also showed a two-fold reduction in their MIC for antibiotics (AMX, AMP, TET, CIP and MTZ). Accumulation assay for EtBr, exhibited active efflux for eight MDR strains (S3, S11, S13, S1, S2, S4, S9 and S12), of which five demonstrated active efflux for all of the antibiotics except ERY (Table 3).

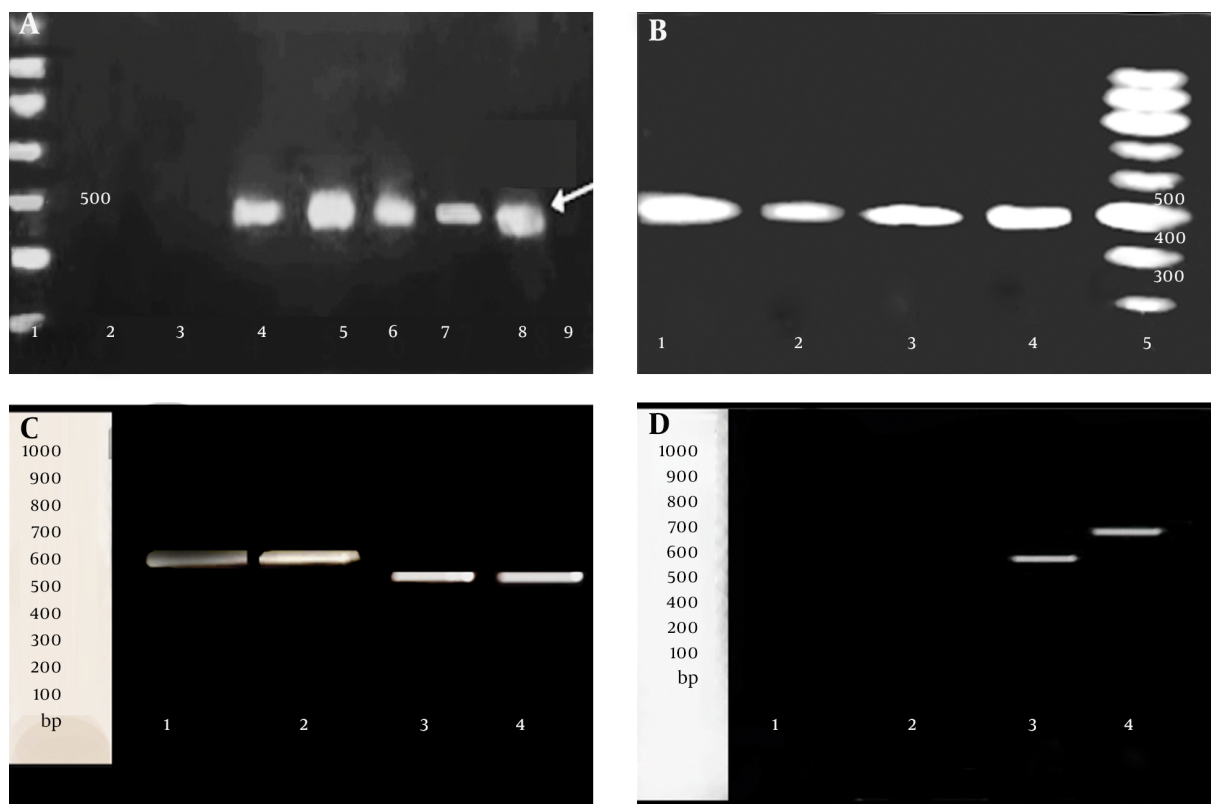
In the presence of CCCP, the increase in the amounts of accumulated EtBr for the strains of group I and II was two folds and the increase in those of antibiotic for the strains of group II, was between 1.4 and 1.8 folds, which was lowest for β -lactam, and highest for TET (Table 3).

In the presence of CCCP, no difference in MIC for EtBr or antibiotics, as well as no difference in the amount of this group comprised of the following strains, S7, S10 and S13, which were only resistant to β -lactams and strains, S5, S6, S8 and S14, which were MDR. Two strains, S16 and S17, susceptible to all of the antibiotics and EtBr, demonstrating no efflux phenotype for them, amplified neither for *hp1184*, nor for *hp1181*. The relationship between the presence of active efflux and presence of two genes *hp1181* and *hp1184*, are demonstrated in Table 2. The results of PCR for the detection of *hp1184* (a product of 445 bp) and *hp1181* (a product of 579 bp) are shown in Figure 1A - D. Standard 26695 and ATCC43504 strains, which were both susceptible to the entire antibiotic tested in this work, showed no efflux for EtBr or antibiotics. To understand the status of *hp1181* gene in the MDR strains as well as in 26695 standard strain, they were analyzed by RT-PCR. The product of RT-PCR for *hp1181* in the MDR strains was approximately 100 bp shorter than standard 26695 susceptible strain (Figure 1C - D).

5. Discussion

We compared the relationship between resistance to non-related antibiotics and their active efflux by evaluation of antibiotic accumulation in the bacterial cells using CCCP as a protonophore. This compound reduces the transmembrane electrochemical gradient and inhibits the efflux pumps (5, 7, 16). Although in our previous work (13), we demonstrated the efflux properties of the strains used in this work, the differences of antibiotic accumulation in the presence and absence of CCCP, was higher with the optimized protocol used in the present work. We found that decrease in MIC to antibiotics, as well as decrease in

Figure 1. PCR Detection of *hp1181* and *hp1184* Genes



A, Detection of *hp1181*: 1: 100-bp ladder; 2: S17; 3: S16; 4: S12; 5: 26695 standard strain, 6: S4; 7: S2; 8: S1; 9, control (no template); B, detection of *hp1184*: 1: 26695 standard strain, 2: S3; 3: S2; 4: S1; 5: 100-bp ladder; C, RT-PCR detection of *hp1181* gene on 1% agarose gel. At the left: 100-bp standard; 1-2: 26695 standard strain; 3-4: S12; D, RT-PCR detection of *hp1181* gene on 15% polyacrylamide gel. At the left: 100-bp standard; 1: control negative for RT-PCR; 2: S16, 3: S12, 5: 26695 standard strain.

Table 1. Resistance or Multi-Resistance Patterns of Isolates (Strains)

Resistance Patterns	Number of Strains	Designed Strain
β -lactame, TET, CIP, MTZ, ERY, EtBr	3	S1, S2, S12
β -lactamas, TET, MTZ, ERY, EtBr	3	S4, S6, S8
β -lactamas, TET, CIP, ERY, EtBr	1	S3
β -lactamas, TET, CIP, EtBr	2	S9, S15
β -lactamas, TET, ERY, EtBr	2	S11, S14
β -lactamas, MTZ, ERY, EtBr	1	S5
β -lactamas	3	S7, S10, S13
Susceptible to β -lactamas, TET, CIP, MTZ, ERY, EtBr	2	S16, S17

MIC to EtBr, were associated with an increase in their accumulation (Table 2). There was an association between this phenotype and presence of *hp1184* and or *hp1181*. However,

observation of a positive *hp1184* status in only six strains demonstrating efflux phenotype for only EtBr, suggested the more specific role of *hp1184* in the active efflux of EtBr (Table 2). This finding is consistent with the results of Van Amsterdam et al. (9).

We observed that decreases in MIC to EtBr and antibiotics, associated with increase in their accumulation amounts, was associated with the presence of *hp1181* (100%) and *hp1184* (50%) among the strains of group II (Tables 2 - 3). This observation indicated the involvement of *hp1181* and *hp1184* in their active efflux-phenotype. However, only five out of 12 MDR-strains, which demonstrated active efflux phenotype for β -lactam, TET, MTZ and CIP, had a positive status for *hp1181*, suggesting the more specific role of *hp1181* gene in the efflux of these antibiotics (9, 10). Nevertheless, despite resistance to CLA, no changes either in MIC or accumulation amount was observed in the presence or absence of CCCP. Using Phe-Arg-b-naphthylamide (PABN), as an efflux pump inhibitor, Hirata et al., proposed the contribution of efflux pumps to CLA resistance in *Helicobacter*

Table 2. Relationship Between MICs ($\mu\text{g}/\text{mL}$) of Antibiotics and EtBr in the Absence (-) and Presence (+) of CCCP and Presence of Efflux Genes (*hp1181*, *hp1184*), Respectively^a

Strains	AMP, -/+	AMX, -/+	TET, -/+	CIP, -/+	MTZ, -/+	ERY, -/+	EtBr, -/+	<i>hp1181</i>	<i>hp1184</i>
Group I MDR: Decreased MIC for EtBr With CCCP									
S3	16/16	8/8	8/8	8/8	8/8	16/16	32/8	-	+
S11	16/16	16/16	8/8	4/4	8/8	16/16	8/4	-	+
S13	8/8	8/8	4/4	4/4	8/8	8/8	16/4	-	+
Group II MDR: Decreased MIC for Both EtBr and Antibiotics With CCCP									
S1	16/8	16/8	8/4	8/4	16/8	16/16	32/8	+	+
S2	8/4	8/4	8/4	8/4	16/8	16/16	16/8	+	+
S4	8/4	8/4	8/4	4/2	16/4	16/16	8/4	+	+
S9	16/8	16/8	8/4	8/4	8/4	8/8	16/4	+	-
S12	16/8	16/8	8/4	8/4	16/8	16/16	16/8	+	-
Group III MDR: No Difference in MIC With CCCP									
S5	8/8	8/8	4/4	4/4	16/16	16/16	8/8	-	-
S6	16/16	16/16	8/8	4/4	16/16	16/16	4/4	-	-
S7	8/8	8/8	4/4	4/4	4/4	8/8	8/8	-	-
S8	8/8	8/8	8/8	2/2	16/16	16/16	8/8	-	-
S10	8/8	8/8	4/4	2/2	8/8	8/8	4/4	-	-
S14	8/8	8/8	8/8	4/4	8/8	16/16	8/8	-	-
S15	16/16	16/16	8/8	8/8	8/8	8/8	16/16	-	-
Group IV: Susceptible Strains									
S16	0.5/ND	0.5/ND	1/ND	2/ND	2/ND	2/ND	2/ND	-	-
S17	0.5/ND	0.5/ND	1/ND	2/ND	4/ND	2/ND	2/ND	-	-
26695	2/ND	2/ND	2/ND	1/ND	4/ND	4/ND	2/ND	+	+

Abbreviation: ND, Not determined.

^a Cut off values for MIC determination was 4, 4, 4, 4, 8; 8, and 4 $\mu\text{g}/\text{mL}$ for AMP, AMX, TET, CIP, MTZ, ERY, and EtBr.

pylori (18). They suggested that the RND-type multidrug efflux pump was involved in CLA resistance. Therefore, the difference between our results and those of Hirata et al. is related to the nature of efflux pumps involved in the resistance to CLA; which is RND-type multidrug efflux pump for CLA and MATE for the *hp1184* and *hp1181* MDR efflux pumps (10). Furthermore, as RND family would be responsible for macrolide intrinsic resistance in *H. pylori*, the nature of its specific inhibitors would also be different since it was demonstrated that various inhibitors influence the efflux pump behaviors (19, 20).

Consistent with the results discussed above, an association was observed between the absence of active efflux either for EtBr or for antibiotics and absence of either *hp1184* or *hp1181* genes in the strains of group IV, as well as in the susceptible strains. Therefore, acquisition of multidrug resistance in MDR strains is due to their active efflux phenotypes and may be associated with presence of *hp1181* and *hp1184* genes. However, 26695 *H. pylori* strain, which was susceptible to all of the antibiotics, contained both of *hp1181* and *hp1184* genes. The results of RT-PCR performed for the MDR strains and for 26695 control *H. pylori* strain could explain this question. The RT-PCR for *hp1181* was positive for both MDR strains containing *hp1181*, and

for 26695 strain, however, the size of RT-PCR product in the MDR strain was approximately 100-bp smaller than that of the 26695 strain. The same was observed for *hp1184* (data not shown). A similar result has been previously observed in the expression of *hp1165* gene in tetracycline-resistant strains of *H. pylori* strains (21).

According to the hypothesis postulated in our objective, we could show the presence of an association between *hp1184* gene and the active efflux of EtBr. Also, we demonstrated the association of *hp1181* gene expression with the specific efflux of non-related antibiotics among clinical MDR strains of *H. pylori*.

In conclusion, expression of the genes *hp1184* and *hp1181* is associated with the active efflux of EtBr and non-related antibiotics, respectively. However, for displaying these phenotypes, a post-transcriptional regulation step may be required

Acknowledgments

We thank Alzahra University for supporting this work. We thank Shahla Tafreshi, Masoumeh Madadi, and Manigh Mirkhaef from the children medical center of Tehran for their technical assistance.

Table 3. Accumulation of EtBr and Antibiotics in the Presence and Absence of CCCP^a

Strain/Group ^b	EtBr +/-CCCP	AMP +/-CCCP	AMX +/-CCCP	ERY +/-CCCP	CIP +/-CCCP	MET +/-CCCP	TET +/-CCCP
S1/II	32.69/17.98	20.54/15.00	17.94/13.25	16.03/16.0	32.60/18.51	30.25/16.86	43.10/23.63
S2/II	62.12/25.42	18.69/14.21	19.08/14.65	10.60/10.55	36.29/19.25	30.69/16.50	42.58/22.01
S3/I	59.40/32.4	24.00/23.8	18.30/18.23	23.08/23.10	13.98/14.01	24.42/24.60	19.10/18.96
S4/II	58.19/26.59	24.10/16.74	21.82/15.48	18.18/18.16	31.02/17.28	36.12/21.41	34.59/17.65
S5/III	26.98/27.01	18.71/18.69	17.19/17.21	14.14/14.10	14.91/14.86	17.56/17.60	19/61/19.59
S6/III	22.00/22.01	17.05/16.98	17.00/17.03	15.88/15.86	20.00/20.03	21.14/21.12	18.25/18.20
S7/III	26.11/26.12	19.00/18.96	16.83/16.85	14.71/14.69	22.00/22.03	21.10/21.07	17.00/16.98
S8/III	17.91/17.89	18.14/18.12	16.00/16.01	13.14/13.12	22.85/22.86	19.63/19.59	16.18/16.20
S9/II	37.15/18.85	24.08/18.36	18.31/14.09	12.65/12.63	21.70/15.53	25.40/17.43	23.00/14.00
S10/III	15.91/15.88	13.44/13.40	14.06/14.0	21.56/21.54	19.83/19.80	17.61/17.58	20.90/20.86
S11/I	49.51/22.56	15.28/15.23	14.90/14.85	12.26/12.23	20.06/20.0	18.00/17.98	24.67/24.65
S12/II	47.85/22.81	24.18/17.53	18.58/14.0	14.10/14.08	22.58/16.0	25.32/17.58	23.00/14.56
S13/I	39.76/19.63	18.06/17.98	17.26/17.21	14.55/14.55	21.68/21.64	15.85/15.87	17.32/17.28
S14/III	21.85/21.80	17.30/17.25	19.00/18.96	12.08/12.05	23.09/23.06	16.91/16.87	18.27/18.25
S15/III	27.10/27.02	24.05/23.98	22.51/22.46	18.06/18.00	20.81/20.78	24.64/24.67	15.90/15.86
S16/IV	45.90/45.86	35.71/35.68	33.76/33.76	33.14/33.12	35.90/35.85	40.10/40.06	30.15/30.12
S17/IV	65.46/65.43	44.06/43.98	42.00/42.02	49.03/48.97	39.84/39.78	52.98/52.93	61.58/61.56
St	41.73/41.65	50.12/46.96	39.86/39.79	33.16/33.06	44.61/44.57	36.03/35.91	32.61/32.56

^aValues are expressed as ng of antibiotics and EtBr per mg (dry wt) of bacteria.

^bgroups I - IV are classified as the Table 2, St: strain 26695.

Footnote

Authors' Contribution: Azadeh Ehsani and Tahereh Falsafi designed, analyzed the experiments and wrote the manuscript; Azadeh Ehsani performed the microbiological experiments; Vahid Niknam contributed to the experimental design and analysis; All authors read and approved the final manuscript.

References

- Bina JE, Alm RA, Uria-Nickelsen M, Thomas SR, Trust TJ, Hancock REW. Helicobacter pylori uptake and efflux: Basis for intrinsic susceptibility to antibiotics in vitro. *Antimicrob Agents Chemother.* 2000;**44**(2):248-54. doi: [10.1128/aac.44.2.248-254.2000](https://doi.org/10.1128/aac.44.2.248-254.2000).
- Malaty HM, Nyren O. Epidemiology of Helicobacter pylori infection. *Helicobacter.* 2003;**8 Suppl 1**:8-12. [PubMed: [14617212](https://pubmed.ncbi.nlm.nih.gov/14617212/)].
- De Francesco V, Zullo A, Hassan C, Giorgio F, Rosania R, Ierardi E. Mechanisms of Helicobacter pylori antibiotic resistance: An updated appraisal. *World J Gastrointest Pathophysiol.* 2011;**2**(3):35-41.
- Li Y, Dannelly HK. Inactivation of the putative tetracycline resistance gene HP1165 in Helicobacter pylori led to loss of inducible tetracycline resistance. *Arch Microbiol.* 2006;**185**(4):255-62. doi: [10.1007/s00203-006-0093-9](https://doi.org/10.1007/s00203-006-0093-9). [PubMed: [16482431](https://pubmed.ncbi.nlm.nih.gov/16482431/)].
- Zechini B, Versace I. Inhibitors of multidrug resistant efflux systems in bacteria. *Recent Pat Antiinfect Drug Discov.* 2009;**4**(1):37-50. [PubMed: [19149695](https://pubmed.ncbi.nlm.nih.gov/19149695/)].
- Poole K. Multidrug efflux pumps and antimicrobial resistance in Pseudomonas aeruginosa and related organisms. *J Mol Microbiol Biotechnol.* 2001;**3**(2):255-64. [PubMed: [11321581](https://pubmed.ncbi.nlm.nih.gov/11321581/)].
- Paulsen IT, Chen J, Nelson KE, Saier MJ. Comparative genomics of microbial drug efflux systems. *J Mol Microbiol Biotechnol.* 2001;**3**(2):145-50. [PubMed: [11321566](https://pubmed.ncbi.nlm.nih.gov/11321566/)].
- Johnson JM, Church GM. Alignment and structure prediction of divergent protein families: periplasmic and outer membrane proteins of bacterial efflux pumps. *J Mol Biol.* 1999;**287**(3):695-715. doi: [10.1006/jmbi.1999.2630](https://doi.org/10.1006/jmbi.1999.2630). [PubMed: [10092468](https://pubmed.ncbi.nlm.nih.gov/10092468/)].
- Van Amsterdam K, Bart A, van der Ende A. A Helicobacter pylori TolC efflux pump confers resistance to metronidazole. *Antimicrob Agents Chemother.* 2005;**49**(4):1477-82. doi: [10.1128/AAC.49.4.1477-1482.2005](https://doi.org/10.1128/AAC.49.4.1477-1482.2005). [PubMed: [15793129](https://pubmed.ncbi.nlm.nih.gov/15793129/)].
- Kutschke A, de Jonge BL. Compound efflux in Helicobacter pylori. *Antimicrob Agents Chemother.* 2005;**49**(7):3009-10. doi: [10.1128/AAC.49.7.3009-3010.2005](https://doi.org/10.1128/AAC.49.7.3009-3010.2005). [PubMed: [15980386](https://pubmed.ncbi.nlm.nih.gov/15980386/)].
- Morrison S. Cloning, expression, purification and properties of a putative multidrug resistance efflux protein from Helicobacter pylori. *International Journal of Antimicrobial Agents.* 2003;**22**(3):242-9. doi: [10.1016/S0924-8579\(03\)00222-X](https://doi.org/10.1016/S0924-8579(03)00222-X).
- Tomb JF, White O, Kerlavage AR, Clayton RA, Sutton GG, Fleischmann RD, et al. The complete genome sequence of the gastric pathogen Helicobacter pylori. *Nature.* 1997;**388**(6642):539-47. doi: [10.1038/41483](https://doi.org/10.1038/41483). [PubMed: [9252185](https://pubmed.ncbi.nlm.nih.gov/9252185/)].
- Falsafi T, Ehsani A, Niknam V. The role of active efflux in antibiotic resistance of clinical isolates of Helicobacter pylori. *Indian J Med Microbiol.* 2009;**27**(4):335-40. doi: [10.4103/0255-0857.55452](https://doi.org/10.4103/0255-0857.55452). [PubMed: [19736403](https://pubmed.ncbi.nlm.nih.gov/19736403/)].

14. Falsafi T, Valizadeh N, Najafi M, Ehsani A, Khani A, Landarani Z, et al. Culture of *Helicobacter pylori* from stool samples in children. *Can J Microbiol.* 2007;**53**(3):411-6. doi: [10.1139/W06-144](https://doi.org/10.1139/W06-144). [PubMed: [17538651](https://pubmed.ncbi.nlm.nih.gov/17538651/)].
15. Falsafi T, Favaedi R, Mahjoub F, Najafi M. Application of stool-PCR test for diagnosis of *Helicobacter pylori* infection in children. *World J Gastroenterol.* 2009;**15**(4):484-8. [PubMed: [19152455](https://pubmed.ncbi.nlm.nih.gov/19152455/)].
16. Best LM, Haldane DJ, Keelan M, Taylor DE, Thomson AB, Loo V, et al. Multilaboratory comparison of proficiencies in susceptibility testing of *Helicobacter pylori* and correlation between agar dilution and E test methods. *Antimicrob Agents Chemother.* 2003;**47**(10):3138-44. [PubMed: [14506021](https://pubmed.ncbi.nlm.nih.gov/14506021/)].
17. Anoushiravani M, Falsafi T, Niknam V. Proton motive force-dependent efflux of tetracycline in clinical isolates of *Helicobacter pylori*. *J Med Microbiol.* 2009;**58**(Pt 10):1309-13. doi: [10.1099/jmm.0.010876-0](https://doi.org/10.1099/jmm.0.010876-0). [PubMed: [19574414](https://pubmed.ncbi.nlm.nih.gov/19574414/)].
18. Hirata K, Suzuki H, Nishizawa T, Tsugawa H, Muraoka H, Saito Y, et al. Contribution of efflux pumps to clarithromycin resistance in *Helicobacter pylori*. *J Gastroenterol Hepatol.* 2010;**25** Suppl 1:S75-9. doi: [10.1111/j.1440-1746.2009.06220.x](https://doi.org/10.1111/j.1440-1746.2009.06220.x). [PubMed: [20586871](https://pubmed.ncbi.nlm.nih.gov/20586871/)].
19. Zhang Z, Liu ZQ, Zheng PY, Tang FA, Yang PC. Influence of efflux pump inhibitors on the multidrug resistance of *Helicobacter pylori*. *World J Gastroenterol.* 2010;**16**(10):1279-84. [PubMed: [20222174](https://pubmed.ncbi.nlm.nih.gov/20222174/)].
20. Pages JM, Masi M, Barbe J. Inhibitors of efflux pumps in Gram-negative bacteria. *Trends Mol Med.* 2005;**11**(8):382-9. doi: [10.1016/j.molmed.2005.06.006](https://doi.org/10.1016/j.molmed.2005.06.006). [PubMed: [15996519](https://pubmed.ncbi.nlm.nih.gov/15996519/)].
21. Falsafi T, Anoushiravani M, Niknam V. The role of hp1165 gene on the efflux-mediated resistance to tetracycline in clinical isolates of *Helicobacter pylori*. *Afr J Microbiol Res.* 2010;**4**(20):2143-7.