



Antimicrobial Resistance, Biofilm Formation, and Phylogenetic Grouping of Uropathogenic *Escherichia coli* Isolates in Egypt: The Role of Efflux Pump-Mediated Resistance

Wesam Elsayed Gawad,¹ Omneya Mohamed Helmy,^{2,*} Wael Mostafa Tawakkol,¹ and Abdelgawad Mohamed Hashem³

¹Department of Microbiology and Immunology, Faculty of Pharmacy, Misr University for Science and Technology, 6th October, Giza, Egypt

²Department of Microbiology and Immunology, Faculty of Pharmacy, Cairo University, Cairo, Egypt

³Department of Microbiology and Immunology, Faculty of Pharmacy, British University in Egypt (BUE), Cairo, Egypt

*Corresponding author: Omneya Mohamed Helmy, Kasr El-Ainy Street-II562, Cairo, Egypt. Tel: +202-25311260, Fax: +202-2535232, E-mail: omnia.helmy@pharma.cu.edu.eg

Received 2017 June 08; Revised 2017 November 28; Accepted 2017 December 13.

Abstract

Background: Urinary tract infections are the most commonly encountered infections in clinics and outpatient settings and are mainly caused by Uropathogenic *Escherichia coli* (UPEC). Multidrug-resistant bacteria (MDR) have become a major public health threat, worldwide.

Objectives: This study aimed to investigate the prevalence of the MDR phenotype, efflux pump-mediated resistance, and the ability for in vitro biofilm formation among UPEC clinical isolates from Egypt.

Methods: Uropathogenic *E. coli* isolates were collected from two Egyptian governorates, identified, and classified to their corresponding phylogenetic group by the polymerase chain reaction (PCR). Antimicrobial susceptibility testing was done using the Kirby-Bauer disk diffusion method. AcrAB-TolC efflux pump major genes were detected by PCR; efflux pump-mediated resistance was determined by the efflux pump inhibitor microplate-based assay. The ability for in-vitro biofilm formation was also tested.

Results: The phylogenetic analysis of the UPEC isolates revealed that most of the isolates belonged to groups B2 and D. The MDR phenotype was detected in 90.8% of UPEC isolates; efflux pump-mediated resistance was detected in all MDR isolates. The *acrA*, *acrB*, and *tolC* were detected in 74.84% of MDR isolates. The ability for in-vitro biofilm formation was recorded in 76.5% of the UPEC isolates.

Conclusions: The MDR phenotype and the ability for in-vitro biofilm formation were predominant among UPEC in Egypt. The high prevalence of MDR efflux pumps necessitates the application of new treatment strategies to inhibit this phenomenon.

Keywords: Biofilms, Drug Resistance, Uropathogenic *Escherichia coli*

1. Background

Urinary Tract Infections (UTIs) are the most common infectious disease affecting both inpatients and outpatients at all ages (1). Uropathogenic *Escherichia coli* (UPEC) is responsible for more than 80% of UTIs (2). *Escherichia coli* isolates fall in four phylogenetic groups (A, B1, B2 and D); UPEC isolates belong mainly to group B2 and less frequently to group D (3). Multidrug resistance (MDR) to antibiotics is defined as resistance to three or more antibiotics from different classes (4). The high prevalence of the MDR phenotype has increased global public health concerns (5). The worldwide reported increase in resistance of *E. coli* to broad-spectrum antimicrobial agents represents a major threat (2), especially in Egypt, where there is a high prevalence of MDR phenotype among UPEC (6, 7).

Among the common bacterial antibiotic resistance

mechanisms is the efflux of antibiotics outside the bacterial cell (8). Efflux pump systems are classified into five families: the ATP binding cassette (ABC) superfamily, the major facilitator superfamily (MFS), the Multidrug and toxic-compound extrusion (MATE) family, the small multidrug resistance (SMR) family and the resistance nodulation division (RND) family (9). The AcrAB-TolC pump that belongs to the RND family is the main efflux pump in *E. coli* clinical isolates (10). This pump is composed of an inner membrane transporter AcrB, periplasmic membrane fusion protein AcrA, and an outer membrane channel TolC (11).

Biofilm is the irreversible attachment of the cell with a surface, by an enclosed, attached polysaccharide matrix (12). Uropathogenic *E. coli* is one of the major causes of recurrent and persistent UTIs due to biofilm formation (13). The first step in biofilm formation is the production of curli protein that promotes the adhesion of bacterial

cells to the solid surface (14). There is a reported correlation between biofilm formation and increase in resistance to antibiotics (15). Higher resistance to antibiotics is reported in bacteria enclosed in biofilms rather than in planktonic cells. The resistance mechanisms in biofilms involve the slow penetration of antibiotics through polysaccharide matrix of the biofilm; resistance gene transfer within the biofilm, which is higher than in planktonic cells; the higher expression of antibiotics' efflux pumps in biofilms; the presence of persister cells that are not mutants, but resist the antibiotic; the slow growth rate and nutrient limitation that decreases antibiotic susceptibility (12, 16).

2. Objectives

The aim of the present study was to detect the prevalence of MDR phenotype, the ability for in-vitro biofilm formation, the detection of AcrAB-TolC pump main genes, and efflux-mediated resistance among UPEC clinical isolates from Egypt.

3. Methods

3.1. Bacterial Strains and Phylogenetic Grouping

The study was performed on a total number of 228 UTI clinical isolates from inpatients and outpatients. One hundred and 66 isolates were collected from the Mansoura university hospital (Dakhalia governorate), and 62 isolates were collected from Misr University for Science and Technology (MUST) hospital (Giza governorate) during the period between January 2014 to December 2015. All experiments in this study were conducted with approval of the ethical committee of Cairo University, Cairo, Egypt.

Identification of the isolates was done by Gram-staining, isolation on MacConkey agar (Oxoid, UK), and Eosin methylene blue (Oxoid, UK) (17). Genomic DNA was extracted from all tested isolates by the boiling lysis method and 1 μ L of the extract was used in all PCR reactions (18). The molecular identification of *E. coli* was performed by the PCR amplification of *uspA* gene, in a final reaction volume of 20 μ L, using primers (Macrogen, Korea) listed in Table 1, at a concentration of 0.5 μ M, and My Taq™ Red Mix (Bioline, UK) (19). Multiplex PCR for detecting *gadA*, *chuA*, *yjaA*, and TSPE4.C2 DNA fragment was used to determine the phylogenetic group of each UPEC isolate, in a final reaction volume of 20 μ L, using primers (Macrogen, Korea) listed in Table 1 at a concentration of 1 μ M each, and My Taq™ Red Mix (Bioline, UK) (20). *Escherichia coli* ATCC 25922 was used as positive control in both PCR reactions.

3.2. Antibiotic Susceptibility Test

The antibiotic susceptibility of the UPEC isolates was determined by the Kirby-Bauer disk diffusion method, according to the clinical and laboratory standards institute (CLSI) guidelines, using the following antibiotics; amikacin (30 μ g), amoxicillin/clavulanic acid (30 μ g), ampicillin (10 μ g), ampicillin/sulbactam (10/10 μ g), cefixime (5 μ g), cefotaxime (30 μ g), ceftazidime (30 μ g), cefuroxime (30 μ g), ciprofloxacin (5 μ g), CO-trimoxazole (25 μ g), gentamicin (10 μ g), levofloxacin (5 μ g), nalidixic acid (30 μ g), nitrofurantion (300 μ g) and norfloxacin (10 μ g), all of which were supplied by Himedia (India), and aztreonam (30 μ g), imipenem (10 μ g), meropenem (10 μ g), piperacillin/tazobactam (100/10 μ g), tetracycline (30 μ g), which were supplied by Oxoid (UK). The *E. coli* strain ATCC 25922 was the reference strain (22). The MDR phenotype is defined as non-susceptibility to at least one agent in three or more of the antimicrobial categories used in treatment, and accordingly, UPEC isolates were classified to MDR and non-MDR (4).

3.3. Phenotypic Detection of Efflux Pump-Mediated Resistance

Efflux pump-mediated resistance in UPEC clinical isolates was tested by the microplate-based assay, using an efflux pump inhibitor, Chlorpromazine (CPZ) (23). The minimum inhibitory concentration (MIC) of CPZ was determined for all tested isolates using the microdilution broth method (24). The sub-MIC value of CPZ was used along with the chosen antibiotics, according to the UPEC isolates resistance patterns, in the microplate-based assay (23).

3.4. Detection of the Presence of AcrAB-TolC Main Efflux Genes

The PCR detection of *acrA*, *acrB*, and *tolC* genes in all UPEC clinical isolates was performed, in a final reaction volume of 20 μ L, using primers (Macrogen, Korea) listed in Table 1 at a concentration of 0.5 μ M, and My Taq™ Red Mix (Bioline, UK) (18, 21).

3.5. Detection of In-Vitro Biofilm Formation and the Phenotypic Detection of Curli Production

In-vitro biofilm formation by UPEC clinical isolates was assayed using the microtiter plate assay method in a 96-well polystyrene flat-bottomed microtiter plate (Greiner Bio-one, Stuttgart, Germany) (25). The biofilm was stained using 0.2% crystal violet (Winlab, UK). The absorbance was measured at 595nm using the Enzyme Linked Immunosorbent (ELISA) reader (BioTek®, MQX 200, USA) and the degree of biofilm formation was estimated (26). The presence of curli fibers was determined by streaking isolates on Luria-Bertani agar plates (L.B.) without salt (Difco Laboratories, U.S.A) containing 40 mg/L Congo red dye (Aldrich

Table 1. Primers Used in the Study, Their Sequence, and Expected Product Size

Target Gene	Primer	Primer Sequence (5' - 3')	Product Size, bp	Ta, °C	Reference
uspA	uspA-F	ccgatacgtgccaatcagt	884	52	(19)
	uspA-R	acgcagaccctagggccagat			
gadA	gadA-F	gatgaaatggcgttggcgcaag	373	53	(20)
	gadA-R	ggcggaagtcgccagacgatatcc			
chuA	chuA-F	atgatcatcggcggtgctg	281	53	(20)
	chuA-R	aaacgcgctcgcgcttaat			
yjaA	yjaA-F	tggttcgcatcttgaagcaaacgt	216	53	(20)
	yjaA-R	acctgtgacaacccctca			
TspE4.C2	tspE4.C2-F	gcgggtgagacagaaacgcg	152	53	(20)
	tspE4.C2-R	ttgtcgtgagttggaaccgc			
acrA	acrA-F	ggctcgtctgatctctca	1078	52	(18)
	acrA-R	ggcttctggtattatcag			
acrB	acrB-F	cgctaacagtgactcacgg	2730	52	(18)
	acrB-R	ttcaatcagaccttaccttc			
tolC	tolC-F	atgcaaatgaagaaa	100	49	(21)
	tolC-R	ttaatgacggaacgatt			

Abbreviation: Ta, PCR annealing temperature.

Chemical Co. Ltd. England), followed by incubation at 30°C for 48 hours; the appearance of red, dry, and rough colonies indicated a positive result (27).

3.6. Statistical Analysis

The data was statistically analyzed using the statistical program for social science (SPSS) version 22. P values were calculated using Chi-square test. P values of < 0.05 were considered statistically significant.

4. Results

4.1. Molecular Identification and Phylogenetic Grouping of UPEC Clinical Isolates

Two hundred and twenty eight UTI isolates were included in the study; 175 isolates were presumptively identified as *E. coli* by conventional culture methods, and confirmed by the PCR amplification of *uspA* (76.75%; 175/228), as shown in Figure 1. The phylogenetic grouping of the UPEC isolates by multiplex PCR, as shown in Figure 1, revealed that 64.57% (113/175), 18.85% (33/175), 10.85% (19/175), and 5.71% (10/175) of the isolates belonged to phylogenetic groups B2, D, A, and B1, respectively. The distribution of the phylogenetic groups differed slightly in UPEC isolates from the two governorates. In the Dakhalia governorate, 66.9% (83/124), 17.7% (22/124), 12.9% (16/124), and 2.4% (3/124) of UPEC isolates belonged to B2, D, A, and B1 phylogenetic groups, respectively. On the other hand, in the Giza governorate, 58.8% (30/51), 21.5% (11/51), 13.7% (7/51), and 5.8% (3/51) of UPEC isolates belonged to B2, D, B1, and A phylogenetic group, respectively.

4.2. Antibiotic Susceptibility of UPEC Clinical Isolates

The MDR phenotype was detected in 90.85% (159/175) of the tested isolates. The incidence of MDR phenotype differed in the two governorates; 96.77% (120/124) of the UPEC isolates' from Dakahlia governorate were MDR, while only 76.47% (39/51) of the isolates from Giza governorate were MDR. The phylogenetic grouping of the MDR isolates revealed that 64.77% (103/159), 18.86% (30/159), 10.69% (17/159), and 5.66% (9/15) of isolates belonged to phylogenetic groups B2, D, A and B1, respectively, as shown in Figure 2. The phylogenetic grouping of the non-MDR isolates revealed that 62.5% (10/16), 18.75% (3/16), 12.5% (2/16), and 6.25% (1/16) of isolates belonged to the phylogenetic groups B2, D, A, and B1, respectively, as shown in Figure 2. The number of resistant UPEC isolates to each of the tested antibiotics among different phylogenetic groups is recorded in Table 2.

4.3. Phenotypic Detection of Efflux Pump-Mediated Resistance

The change in the susceptibility of the UPEC isolates to each of the tested antibiotics in the presence of an EPI (CPZ) is shown in Figure 3. Efflux pump-mediated resistance was detected in 92% (161/175) of UPEC isolates, and 98.7% (157/159) of MDR isolates. Efflux pump-mediated resistance to more than one antibiotic, in a single isolate, was recorded in 95% (153/161) of efflux pump containing isolates; all of which were MDR UPEC.

4.4. Polymerase Chain Reaction Detection of AcrAB-TolC Efflux Pump Main Genes

Agarose gel of the PCR amplification products of the efflux pump main genes is shown in Figure 1. The three tested

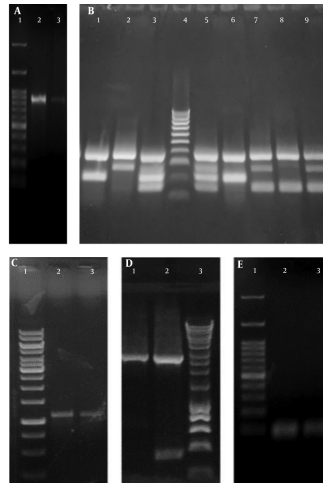


Figure 1. A, Agarose gel of the Polymerase Chain Reaction amplification product of *uspA* where Lane 1: One Mark 100 DNA Ladder (100 bp, 200 bp, 300 bp, 400 bp, 500 bp, 600 bp, 700 bp, 800 bp, 900 bp, 1000 bp, 1500 bp, 3000 bp) (GeneDireX, USA) Lane 2, 3: *uspA* band of the exact size of 884 bp in *E. coli* ATCC 25922 and a UPEC isolate, respectively; B, Agarose gel of the phylogenetic multiplex Polymerase Chain Reaction amplification products where: Lane 1, 6: Phylogenetic group A showing specific bands of *gadA* (373 bp) and *yjaA* (216 bp). Lane 2: Phylogenetic group D showing specific bands of *gadA* (373 bp) and *chuA* (281 bp). Lane 3, 5: Phylogenetic group B2 showing specific bands of *gadA* (373 bp), *chuA* (281 bp) and *yjaA* (216 bp) and DNA fragment *TspE4.C2* (152 bp). Lane 4: HyperLadder™ 100bp (100 bp, 200 bp, 300 bp, 400 bp, 500 bp, 600 bp, 700 bp, 800 bp, 900 bp, 1013bp) (Bioline, UK). Lane 7, 9: Phylogenetic group D showing specific bands of *gadA* (373 bp), *chuA* (281 bp) and DNA fragment *TspE4.C2* (152 bp). Lane 8: Phylogenetic group B1 of *E. coli* ATCC 25922 showing specific bands of *gadA* (373 bp) and DNA fragment *TspE4.C2* (152 bp); C, Agarose gel of the Polymerase Chain Reaction amplification product of *acrA* where: Lane 1: GeneRuler 1 kb DNA Ladder (250 bp, 500 bp, 750 bp, 1000 bp, 1500 bp, 2000 bp, 2500 bp, 3000 bp, 3500 bp, 4000 bp, 5000 bp, 6000 bp, 8000 bp, 10000 bp). Lane 2 - 3: *acrA* band of the exact size of 1078 bp. D, Agarose gel of the Polymerase Chain Reaction amplification product of *acrB* where: Lane 1 - 2: *acrB* band of the exact size of 2730 bp. Lane 3: HyperLadder™ 1 Kb (200 bp, 400 bp, 600 bp, 1000 bp, 1500 bp, 2000 bp, 2500 bp, 3000 bp, 4000 bp, 5000 bp, 6000 bp, 8000 bp, 10037bp) (Bioline, UK); E, Agarose gel of the Polymerase Chain Reaction amplification product of *tolC* where: Lane 1: One Mark 100 DNA Ladder (100 bp, 200 bp, 300 bp, 400 bp, 500 bp, 600 bp, 700 bp, 800 bp, 900 bp, 1000 bp, 1500 bp, 3000 bp) (GeneDireX, USA). Lane 2 - 3: *tolC* PCR band of the exact size of 100 bp.

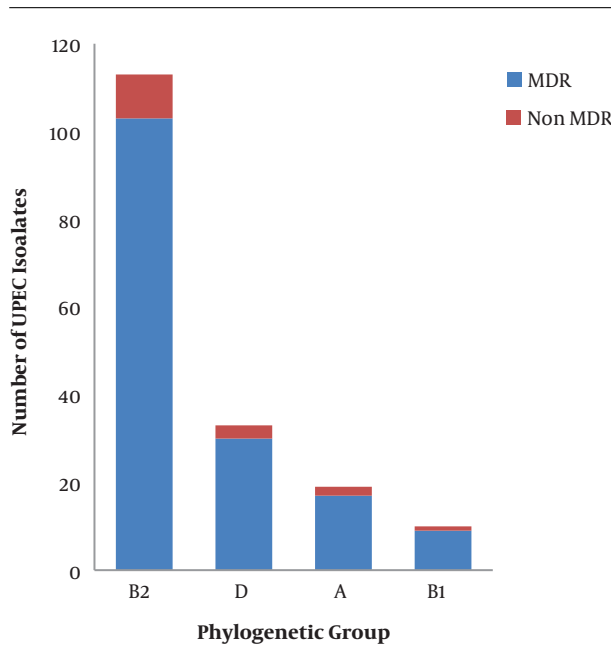


Figure 2. The Number of Multi-Drug Resistant (MDR) and Non-MDR Uropathogenic *Escherichia coli* in the Different Phylogenetic Groups

Table 2. Number of Resistant Uropathogenic *Escherichia coli* Isolates to Each Tested Antibiotic Among the Different Phylogenetic Groups

Antibiotics	B2	D	A	B1	Total No of Resistant Isolates
Amikacin	14	0	0	1	15
Gentamicin	53	17	7	5	82
Imipenem	27	7	7	5	46
Meropenem	53	12	8	6	79
Cefuroxime	103	30	16	9	158
Cefixime	80	27	15	8	130
Cefotaxim	78	22	15	9	124
Ceftazidime	75	24	14	8	121
Co-Trimoxazole	82	23	12	7	124
Ciprofloxacin	71	22	7	5	105
Norfloxacin	71	22	7	5	105
Levofloxacin	69	19	9	5	102
Nalidixic acid	81	23	15	8	127
Nitrofurantoin	40	12	8	2	62
Ampicillin	104	29	17	10	160
Amoxicillin/Clavulanic acid	94	29	16	9	148
Ampicillin/Sulbactam	83	28	14	8	133
Piperacillin/Tazobactam	57	25	12	4	98
Aztreonam	70	21	14	7	112
Tetracycline	79	24	13	9	125

genes (*acrA*, *acrB*, and *tolC*) were concomitantly detected in 74.28% (130/175) of the UPEC isolates, in 74.84% (119/159) of MDR isolates, and in 68.75% (11/16) of non-MDR isolates. Missing *acrA* was detected in 8% (14/175) and 8.17% (13/159)

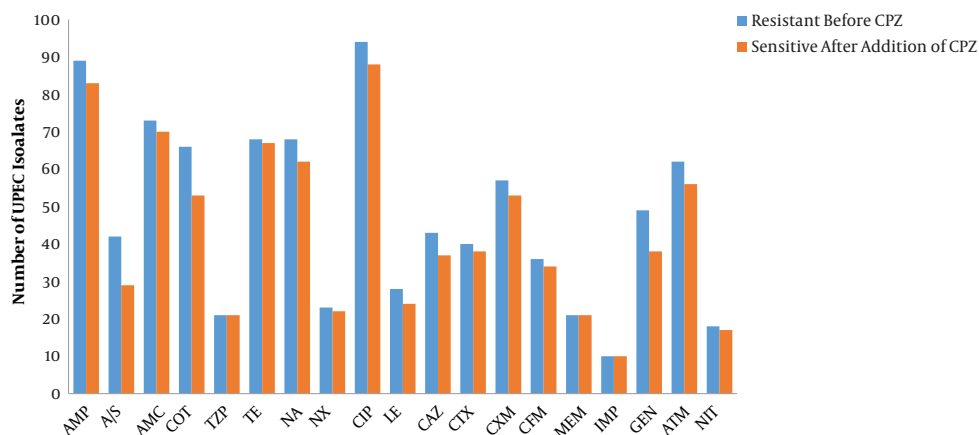


Figure 3. Change in the antibiotic resistance of Uropathogenic *Escherichia coli* in the presence of an efflux pump inhibitor CPZ where: Ampicillin (AMP), Ampicillin/Sulbactam (A/S), Amoxicillin/Clavulanic acid (AMC), Co-Trimoxazole (COT), Piperacillin/Tazobactam (TZP), Tetracycline (TE), Nalidixic Acid (NA), Norfloxacin (NX), Ciprofloxacin (CIP), Levofloxacin (LE), Ceftazidime (CAZ), Cefotaxime (CTX), Cefuroxime (CXM), Cefixime (CFM), Meropenem (MEM), Imipenem (IMP), Gentamicin (GEN), Aztreonam (ATM), and Nitrofurantoin (NIT)

of UPEC isolates and MDR isolates, respectively. However, the absence of *acrB* was detected in 10.85% (19/175) and 1.25% (2/159) of UPEC isolates and MDR isolates, respectively. The absence of *acrAB*, *acrA-tolC*, and *acrB-tolC* genes was detected in 5.71% (10/175), 0.57% (1/175), and 0.57% (1/175) of UPEC isolates, respectively. Missing of either *acrAB* or *acrA-tolC* was recorded in 5.66% (9/159) and 0.62% (1/159) of MDR isolates, respectively. The bacterial susceptibility to tetracycline increased significantly with the absence of two of the pump genes ($P = 0.003$).

4.5. Detection of In-Vitro Biofilm Formation and Curli Production

The degree of biofilm formation was measured in all UPEC isolates; 44% (77/175), 10.8% (19/175), 21.7% (38/175), and 23.42% (41/175) of which were strong, moderate, weak, and negative biofilm producers, respectively, as shown in Figure 4. The MDR UPEC clinical isolates were strong, moderate, weak, and negative biofilm producers at a percentage of 48.42% (77/159), 11.94% (19/159), 20.75% (33/159), and 18.86% (30/159), respectively, as shown in Figure 4. There was a significant correlation between biofilm formation and multidrug resistance ($P = 0.00$). Curli production was detected in 45.71% (80/175) of UPEC isolates, 98.75% of which were MDR.

5. Discussion

Urinary Tract Infections represent a major health threat due to the wide spread of antibiotic resistance and the associated high recurrence rate (28). In the current study, the phylogenetic grouping of tested UPEC revealed

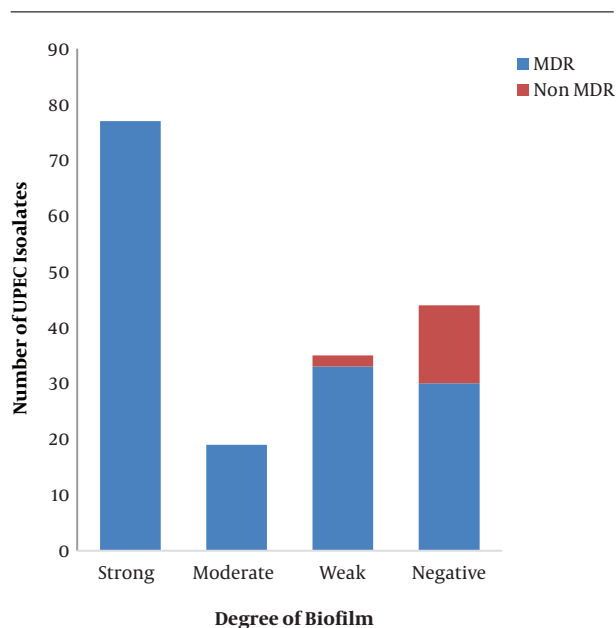


Figure 4. The Degree of biofilms in Multi-Drug Resistant (MDR) and Non-MDR Uropathogenic *Escherichia coli* Clinical Isolates

that 64.57%, 18.85%, 10.85%, and 5.71% of the isolates belonged to the phylogenetic group B2, D, A, and B1, respectively. Similar phylogenetic grouping studies in Barcelona and Iran showed comparable results, with high predominance of phylogenetic groups B2 and D in UPEC isolates (29, 30).

This research revealed a high incidence of MDR phenotype (90.85%) among UPEC isolates. The percentage of

the MDR phenotype differed in isolates from the 2 governorates, being higher in Mansura hospital (Dakhalia governorate, rural, 96.77%) than in MUST hospital (Giza governorate, urban, 76.47%). Other studies in Egypt, reported a high incidence of MDR phenotype among UPEC; where it was recorded in 95%, 84%, and 47.9% of tested UPEC isolates in Cairo, Dakhalia, and Minia governorates, respectively (6, 7, 31). Other studies, from developing countries, also reported a high incidence of antibiotic resistance among UPEC; where the MDR phenotype was detected among 78%, 32.2% and 92.9%, of UPEC isolates from Tehran, Libya, and Bangladesh, respectively (32-34). In the current study, 64.8%, 18.9%, 10.7%, and 5.7% of the MDR UPEC isolates belonged to phylogenetic groups B2, D, A, and B1, respectively; this is in contrast to a study from Korea where: 73%, 23%, and 3.2% of MDR UPEC belonged to phylogenetic groups B2, D, and A, respectively (1).

Multidrug efflux pumps play an important role in resistance to different antibiotic classes (35, 36). The current study detected the co-presence of two efflux pump genes, *acrA* and *acrB* in 74.28% of tested UPEC clinical isolates, and the presence of *tolC* in 98.85% of UPEC isolates. This is in contrast to studies from Iran that reported the co-presence of *acrA-B* in 95.9% of *E. coli* isolates (32), and the presence of *tolC* in 69.4% of *E. coli* isolates (37). A significant correlation between the presence of *tolC* and the MDR phenotype ($P = 0.044$) was detected in the present study. This is because *TolC* functions independently of *AcrA* and *AcrB*, thus it can contribute to intrinsic resistance with or without *AcrA-B* (38). In the current study, the bacterial susceptibility to tetracycline increased significantly with the absence of two of the pump genes ($P = 0.003$); this is in agreement with a previous study by Okusu et al. (1996), who reported that deletion of *acrAB* resulted in hypersensitivity to tetracycline, nalidixic acid, ampicillin, chloramphenicol, and rifampin (39). Efflux pump-mediated resistance was predominant among UPEC isolates from Egypt (92%); it contributes to the MDR phenotype in the tested UPEC isolates, where efflux pump-mediated resistance to more than one antibiotic was recorded in 96.22% of MDR UPEC isolates. This is in accordance with previous studies from Alexandria (Egypt) and Japan that showed the major contribution of efflux pumps in *E. coli* (35, 36).

Several studies have previously reported that most UPEC clinical isolates with relapsed infection were in-vitro biofilm-producers (16). In the present study, in-vitro biofilm production was recorded in 76.5% of UPEC isolates; this is in contrast to other studies that showed different percentages of biofilm production among UPEC with 63.6%, 60.15%, and 51.9% recorded in Egypt, India, and Nepal, respectively (15, 40, 41). Curli production was detected in 45.7% of the tested UPEC clinical isolates; a simi-

lar study from Sweden reported the detection of curli production among 54% of UPEC (42). A significant correlation was found between biofilm production and MDR phenotype among UPEC in the current study. In this study, 81.13% of MDR UPEC isolates were biofilm-producers; while 100% of MDR UPEC isolates in India were biofilm-producers (15). Previous studies indicated a strong correlation between biofilm production and resistance to multiple antibiotics (15, 40, 43).

6. Conclusions

The misuse of antibiotics leads to the wide spread of MDR phenotype among UPEC isolates in Egypt. The significant correlation between biofilm production and MDR phenotype will lead to relapse of infection. The prevalence of efflux pump-mediated resistance to more than one antibiotic, as a prominent mechanism of resistance in Egypt, necessitates the application of new treatment strategies to inhibit efflux pumps.

References

- Lee JH, Subhadra B, Son YJ, Kim DH, Park HS, Kim JM, et al. Phylogenetic group distributions, virulence factors and antimicrobial resistance properties of uropathogenic *Escherichia coli* strains isolated from patients with urinary tract infections in South Korea. *Lett Appl Microbiol*. 2016;**62**(1):84-90. doi: [10.1111/lam.12517](https://doi.org/10.1111/lam.12517). [PubMed: 26518617].
- Farmer K, James A, Naraine R, Dolphin G, Sylvester W, Amadi V, et al. Urinary tract infection *Escherichia coli* is related to the environmental *Escherichia coli* in their DNA barcoding and antibiotic resistance patterns in Grenada. *Adv Microbiol*. 2016;**6**(1):33-46. doi: [10.4236/aim.2016.61004](https://doi.org/10.4236/aim.2016.61004).
- Clermont O, Bonacorsi S, Bingen E. Rapid and simple determination of the *Escherichia coli* phylogenetic group. *Appl Environ Microbiol*. 2000;**66**(10):4555-8. [PubMed: 11010916].
- Magiorakos AP, Srinivasan A, Carey RB, Carmeli Y, Falagas ME, Giske CG, et al. Multidrug-resistant, extensively drug-resistant and pandrug-resistant bacteria: an international expert proposal for interim standard definitions for acquired resistance. *Clin Microbiol Infect*. 2012;**18**(3):268-81. doi: [10.1111/j.1469-0691.2011.03570.x](https://doi.org/10.1111/j.1469-0691.2011.03570.x). [PubMed: 21793988].
- Nikaido H. Multidrug resistance in bacteria. *Annu Rev Biochem*. 2009;**78**:119-46. doi: [10.1146/annurev.biochem.78.082907.145923](https://doi.org/10.1146/annurev.biochem.78.082907.145923). [PubMed: 19231985].
- Abdel Moaty M, Mohamed W, Abdel All S, El Hendawy H. Prevalence and molecular epidemiology of extended spectrum beta lactamase producing *Escherichia coli* from hospital and community settings in Egypt. *J Appl Pharm Sci*. 2016;**6**(1):42-7. doi: [10.7324/japs.2016.600107](https://doi.org/10.7324/japs.2016.600107).
- Adel El Sokkary MM, Abdelmegeed ES. Characterisation of class 1 integron among *Escherichia coli* isolated from Mansoura university hospitals in Egypt. *Adv Microbiol*. 2015;**5**(4):269-77. doi: [10.4236/aim.2015.54025](https://doi.org/10.4236/aim.2015.54025).
- Piddock LJ. Multidrug-resistance efflux pumps - not just for resistance. *Nat Rev Microbiol*. 2006;**4**(8):629-36. doi: [10.1038/nrmicro1464](https://doi.org/10.1038/nrmicro1464). [PubMed: 16845433].
- Anes J, McCusker MP, Fanning S, Martins M. The ins and outs of RND efflux pumps in *Escherichia coli*. *Front Microbiol*. 2015;**6**:587. doi: [10.3389/fmicb.2015.00587](https://doi.org/10.3389/fmicb.2015.00587). [PubMed: 26113845].

10. Eswaran J, Koronakis E, Higgins MK, Hughes C, Koronakis V. Three's company: component structures bring a closer view of tripartite drug efflux pumps. *Curr Opin Struct Biol*. 2004;**14**(6):741-7. doi: [10.1016/j.sbi.2004.10.003](https://doi.org/10.1016/j.sbi.2004.10.003). [PubMed: [15582398](https://pubmed.ncbi.nlm.nih.gov/15582398/)].
11. Abdali N, Parks JM, Haynes KM, Chaney JL, Green AT, Wolloscheck D, et al. Reviving Antibiotics: Efflux Pump Inhibitors That Interact with AcrA, a Membrane Fusion Protein of the AcrAB-TolC Multidrug Efflux Pump. *ACS Infect Dis*. 2017;**3**(1):89-98. doi: [10.1021/acscinfed.5b00167](https://doi.org/10.1021/acscinfed.5b00167). [PubMed: [27768847](https://pubmed.ncbi.nlm.nih.gov/27768847/)].
12. Soto SM. Role of efflux pumps in the antibiotic resistance of bacteria embedded in a biofilm. *Virulence*. 2013;**4**(3):223-9. doi: [10.4161/viru.23724](https://doi.org/10.4161/viru.23724). [PubMed: [23380871](https://pubmed.ncbi.nlm.nih.gov/23380871/)].
13. Neupane S, Pant ND, Khatiwada S, Chaudhary R, Banjara MR. Correlation between biofilm formation and resistance toward different commonly used antibiotics along with extended spectrum beta lactamase production in uropathogenic Escherichia coli isolated from the patients suspected of urinary tract infections visiting Shree Birendra Hospital, Chhauni, Kathmandu, Nepal. *Antimicrob Resist Infect Control*. 2016;**5**:5. doi: [10.1186/s13756-016-0104-9](https://doi.org/10.1186/s13756-016-0104-9). [PubMed: [26885364](https://pubmed.ncbi.nlm.nih.gov/26885364/)].
14. Chaudhary M. A novel approach to combat acquired multiple resistance in Escherichia coli by using EDTA as efflux pump inhibitor. *J Microb Biochem Technol*. 2012;**4**(6):126-30. doi: [10.4172/1948-5948.1000082](https://doi.org/10.4172/1948-5948.1000082).
15. Verma S, Patil SS. In vitro biofilm formation by uropathogenic bacteria and their antibiotic susceptibility pattern. *J Krishna Inst Med Sci Univ*. 2016;**5**(3):61-7.
16. Soto SM. Importance of biofilms in urinary tract infections, new therapeutic approaches. *Adv Biol*. 2014;**2014**:1-13. doi: [10.1155/2014/543974](https://doi.org/10.1155/2014/543974).
17. Whitman WB. *Bergeys manual of systematics of archaea and bacteria 2015*. USA: John Wiley and Sons; 2015. doi: [10.1002/9781118960608](https://doi.org/10.1002/9781118960608).
18. Moreira MA, Rodrigues PP, Tomaz RS, de Moraes CA. Multidrug efflux systems in Escherichia coli and Enterobacter cloacae obtained from wholesome broiler carcasses. *Braz J Microbiol*. 2009;**40**(2):241-7. doi: [10.1590/S1517-83822009000200007](https://doi.org/10.1590/S1517-83822009000200007). [PubMed: [24031352](https://pubmed.ncbi.nlm.nih.gov/24031352/)].
19. Chen J, Griffiths MW. PCR differentiation of Escherichia coli from other gram-negative bacteria using primers derived from the nucleotide sequences flanking the gene encoding the universal stress protein. *Lett Appl Microbiol*. 1998;**27**(6):369-71. [PubMed: [9871356](https://pubmed.ncbi.nlm.nih.gov/9871356/)].
20. Doumith M, Day MJ, Hope R, Wain J, Woodford N. Improved multiplex PCR strategy for rapid assignment of the four major Escherichia coli phylogenetic groups. *J Clin Microbiol*. 2012;**50**(9):3108-10. doi: [10.1128/JCM.01468-12](https://doi.org/10.1128/JCM.01468-12). [PubMed: [22785193](https://pubmed.ncbi.nlm.nih.gov/22785193/)].
21. Guo X, Murray A, Xiong C, Zhu S. Treatment of escherichia coli BW25113 with subinhibitory levels of kanamycin results in antibiotic cross resistance and TolC upregulation. *J Exp Microbiol Immunol*. 2013;**17**:19-23.
22. Cockerill FR, AWikler M, Alder J. Performance standards for antimicrobial disk susceptibility tests. *M100 S22, CLSI*. 2012;**32**(3):84-6.
23. Martins M, Couto I, Viveiros M, Amaral L. Identification of efflux-mediated multi-drug resistance in bacterial clinical isolates by two simple methods. *Methods Mol Biol*. 2010;**642**:143-57. doi: [10.1007/978-1-60327-279-7_11](https://doi.org/10.1007/978-1-60327-279-7_11). [PubMed: [20401592](https://pubmed.ncbi.nlm.nih.gov/20401592/)].
24. Andrews JM. Determination of minimum inhibitory concentrations. *J Antimicrob Chemother*. 2001;**48** Suppl 1:5-16. [PubMed: [11420333](https://pubmed.ncbi.nlm.nih.gov/11420333/)].
25. Rijavec M, Muller-Premru M, Zakotnik B, Zgur-Bertok D. Virulence factors and biofilm production among Escherichia coli strains causing bacteraemia of urinary tract origin. *J Med Microbiol*. 2008;**57**(Pt 1):1329-34. doi: [10.1099/jmm.0.2008/002543-0](https://doi.org/10.1099/jmm.0.2008/002543-0). [PubMed: [18927408](https://pubmed.ncbi.nlm.nih.gov/18927408/)].
26. Abdallah NMA, Elsayed SB, Mostafa MMY, El gohary GM. Biofilm forming bacteria isolated from urinary tract infection, relation to catheterization and susceptibility to antibiotics. *Int J Biotechnol Mol Biol Res*. 2011;**2**(10):172-8.
27. Baugh S, Phillips CR, Ekanayaka AS, Piddock LJ, Webber MA. Inhibition of multidrug efflux as a strategy to prevent biofilm formation. *J Antimicrob Chemother*. 2014;**69**(3):673-81. doi: [10.1093/jac/dkt420](https://doi.org/10.1093/jac/dkt420). [PubMed: [24176982](https://pubmed.ncbi.nlm.nih.gov/24176982/)].
28. Ponnusamy P, Nagappan R. Extended spectrum beta lactamase, biofilm producing uropathogenic pathogens and their antibiotic susceptibility patterns from urinary tract infection, an overview. *Int J Microbiol Res*. 2013;**4**(2):101-18. doi: [10.5829/jidosi.ijmr.2013.4.2.73136](https://doi.org/10.5829/jidosi.ijmr.2013.4.2.73136).
29. Sabate M, Moreno E, Perez T, Andreu A, Prats G. Pathogenicity island markers in commensal and uropathogenic Escherichia coli isolates. *Clin Microbiol Infect*. 2006;**12**(9):880-6. doi: [10.1111/j.1469-0691.2006.01461.x](https://doi.org/10.1111/j.1469-0691.2006.01461.x). [PubMed: [16882293](https://pubmed.ncbi.nlm.nih.gov/16882293/)].
30. Abdi HA, Ghalehnoo MR. Virulence genes, genetic diversity, antimicrobial susceptibility and phylogenetic background of escherichia coli isolates. *Int J Enteric Pathog*. 2015;**3**(3). doi: [10.17795/ijep25692](https://doi.org/10.17795/ijep25692).
31. Eman FA, Rehab MAE, Abo BFA, Nancy GF, Neveen AA, Gamal FMG. Evaluation of antibacterial activity of some non steroidal anti inflammatory drugs against Escherichia coli causing urinary tract infection. *Afr J Microbiol Res*. 2016;**10**(34):1408-16. doi: [10.5897/ajmr2016.8179](https://doi.org/10.5897/ajmr2016.8179).
32. Maleki D, Honarmand Jahromy S, Zare Karizi S, Eslami P. The prevalence of acrA and acrB genes among multiple drug resistant uropathogenic Escherichia coli isolated from patients with UTI in Milad hospital, Tehran. *Avicenna J Clin Microbiol Infect*. 2017;**4**(1). doi: [10.17795/ajcmi-39785](https://doi.org/10.17795/ajcmi-39785).
33. Abujnah AA, Zorgani A, Sabri MA, El-Mohammady H, Khalek RA, Ghenghesh KS. Multidrug resistance and extended-spectrum beta-lactamases genes among Escherichia coli from patients with urinary tract infections in Northwestern Libya. *Libyan J Med*. 2015;**10**:26412. doi: [10.3402/ljm.v10.26412](https://doi.org/10.3402/ljm.v10.26412). [PubMed: [25651907](https://pubmed.ncbi.nlm.nih.gov/25651907/)].
34. Yusuf M, Islam KM, Jhora S, Shamsuzzaman AKM, Rahman M. Emergence of multidrug resistant uropathogenic Escherichia coli, (UPEC) strains isolated from a hospital in Bangladesh. *J Immunol Clin Microbiol*. 2016;**1**(3):1. doi: [10.5455/jicm.13.20160731](https://doi.org/10.5455/jicm.13.20160731).
35. Helaly GF, Shawky S, Amer R, El Sawaf G, El Kholy MA. Expression of acrAB efflux pump and role of melfloquine as efflux pump inhibitor in MDR E. coli. *Am J Infect Dis*. 2016;**4**(1):6-13. doi: [10.12691/ajidm-4-1-2](https://doi.org/10.12691/ajidm-4-1-2).
36. Yasufuku T, Shigemura K, Shirakawa T, Matsumoto M, Nakano Y, Tanaka K, et al. Correlation of overexpression of efflux pump genes with antibiotic resistance in Escherichia coli Strains clinically isolated from urinary tract infection patients. *J Clin Microbiol*. 2011;**49**(1):189-94. doi: [10.1128/JCM.00827-10](https://doi.org/10.1128/JCM.00827-10). [PubMed: [21048014](https://pubmed.ncbi.nlm.nih.gov/21048014/)].
37. Kafilzadeh F, Farsimadan F. Investigating multidrug efflux pumps in relation to the antibiotic resistance pattern in Escherichia coli strains from patients in Iran. *Biomed Res*. 2016;**27**(4):1130-5.
38. Sulavik MC, Houseweart C, Cramer C, Jiواني N, Murgolo N, Greene J, et al. Antibiotic susceptibility profiles of Escherichia coli strains lacking multidrug efflux pump genes. *Antimicrob Agents Chemother*. 2001;**45**(4):1126-36. doi: [10.1128/AAC.45.4.1126-1136.2001](https://doi.org/10.1128/AAC.45.4.1126-1136.2001). [PubMed: [11257026](https://pubmed.ncbi.nlm.nih.gov/11257026/)].
39. Okusu H, Ma D, Nikaido H. AcrAB efflux pump plays a major role in the antibiotic resistance phenotype of Escherichia coli multiple-antibiotic-resistance (Mar) mutants. *J Bacteriol*. 1996;**178**(1):306-8. [PubMed: [8550435](https://pubmed.ncbi.nlm.nih.gov/8550435/)].
40. Mohamad EA, El Shalakany AH. Detection of biofilm formation in uropathogenic bacteria. *Egypt J Med Microbiol*. 2015;**24**(1):49-58. doi: [10.12816/0024809](https://doi.org/10.12816/0024809).
41. Abdaagire N, Chincholkar V, Kulkarni D, Nilekar S, Birajdar S. Biofilm production among uropathogenes and their antibiogram. *Int J Pharm Bio Sci*. 2014;**5**(1):261-6.
42. Kai Larsen Y, Luthje P, Chromek M, Peters V, Wang X, Holm A, et al. Uropathogenic Escherichia coli modulates immune responses and its curli fimbriae interact with the antimicrobial peptide LL-37. *PLoS Pathog*. 2010;**6**(7):1001010. doi: [10.1371/journal.ppat.1001010](https://doi.org/10.1371/journal.ppat.1001010). [PubMed: [20661475](https://pubmed.ncbi.nlm.nih.gov/20661475/)].
43. Atray D, Atray M. Correlation between biofilm production and antibiotic resistance pattern in uropathogenic escherichia coli in tertiary care hospital in southern Rajasthan, India. *Int J Curr Microbiol App Sci*. 2015;**4**(7):640-6.