

## REVIEW ARTICLE

# The Prognostic Value of Thrombocytopenia in COVID-19 Patients; a Systematic Review and Meta-Analysis

Davood Bashash<sup>1\*</sup>, Fatemeh Sadat Hosseini-Baharanchi<sup>2</sup>, Mostafa Rezaie-Tavirani<sup>3</sup>, Majid Safa<sup>4</sup>, Nader Akbari Dilmaghani<sup>5,6</sup>, Mohammad Faranoush<sup>7</sup>, Hassan Abolghasemi<sup>8</sup>

1. Department of Hematology and Blood Banking, School of Allied Medical Sciences, Shahid Beheshti University of Medical Sciences, Tehran, Iran.
2. Minimally Invasive Surgery Research Center & Department of Biostatistics, School of Public Health, Iran University of Medical Sciences, Tehran, Iran.
3. Proteomics Research Center, Faculty of Paramedical Sciences, Shahid Beheshti University of Medical Sciences, Tehran, Iran.
4. Department of Hematology and Blood Banking, Faculty of Allied Medicine, Iran University of Medical Sciences, Tehran, Iran.
5. Hearing Disorders Research Center, Loghman Hakim Hospital, Shahid Beheshti University of Medical Sciences, Tehran, Iran.
6. Department of Otolaryngology, Head and Neck Surgery, Loghman Hakim Educational Hospital, School of Medicine, Shahid Beheshti University of Medical Sciences, Tehran, Iran.
7. Pediatric Growth and Development Research Center, Institute of Endocrinology, Iran University of Medical Sciences, Tehran, Iran.
8. Pediatric Congenital Hematologic Disorders Research Center, Shahid Beheshti University of Medical Sciences, Tehran, Iran.

Received: August 2020; Accepted: August 2020; Published online: 19 September 2020

**Abstract:** **Introduction:** Multiple lines of evidence have attested that decreased numbers of platelets may serve as a surrogate marker for poor prognosis in a wide range of infectious diseases. Thus, to provide a well-conceptualized viewpoint demonstrating the prognostic value of thrombocytopenia in COVID-19, we performed a meta-analysis of pertinent literature. **Method:** The keywords "platelet" OR "thrombocytopenia" AND "COVID-19" OR "coronavirus 2019" OR "2019-nCoV" OR "SARS-CoV-2" were searched in National Library of Medicine Medline/PubMed and Scopus between December 30, 2019, and May 9, 2020 in English without any restriction. The initial search results were first screened by title and abstract, and then full texts of relevant articles representing information on the platelet count (main outcome) with a clinically validated definition of COVID-19 severity were finally selected. To assess the existence of bias in the included studies, the funnel plot and Egger plot along with Egger tests were used. Also, the heterogeneity among the included studies was tested using the Chi-square test. **Results:** The results of our meta-analysis of 19 studies, totaling 3383 COVID-19 patients with 744 (21.9%) severe cases, revealed that non-severe cases have a significantly higher number of platelets and showed that the probability of the emergence of thrombocytopenia is significantly higher in the severe cases with the pooled mean difference of -21.5 (%95 CI: -31.57, -11.43). **Conclusion:** Decreased number of platelets more commonly associates with severe COVID-19; however, whether the emergence of thrombocytopenia may result in diseases severity or the severity of the disease may decrease platelets, is open to debate.

**Keywords:** SARS-CoV-2; COVID-19; Prognosis; Blood Platelets; Thrombocytopenia; Meta-analysis

**Cite this article as:** Bashash D, Hosseini-Baharanchi F S, Rezaie-Tavirani M, Safa M, Akbari Dilmaghani N, Faranoush M, Abolghasemi H. The Prognostic Value of Thrombocytopenia in COVID-19 Patients; a Systematic Review and Meta-Analysis. Arch Acad Emerg Med. 2020; 8(1): e75.

\*Corresponding Author: Davood Bashash; Department of Hematology and Blood banking, School of Allied Medical Sciences, Shahid Beheshti University of Medical Sciences, Tehran, Iran. Tel: +98-21-22717504, Fax: +98-21-22721150, E-mail: d.bashash@sbm.ac.ir

## 1. Introduction

Since early 2020, almost all people around the world have been tracking the statistics of the novel coronavirus (2019nCoV; named SARS-CoV-2 by the World Health Organization (WHO) in February, 2020 (1)) daily, watching the numbers of infected cases and death tolls increase unceasingly day after day. Life is on hold as death and disease have cast



a sinister shadow on people's lives. It is heartbreaking for the generation in their last decades to die alone and also painful for families losing their loved ones. For the time being (i.e. May 11, 2020), over 4,250,000 infected cases with sorrowful statistics of more than 2850,000 deaths have been recorded all over the world. There are also evidence that adults under the indicated age range with no history of medical conditions may display serious complications and present disease with an unfavorable outcome (2). In other words, coronavirus disease 2019 (abbreviated to COVID-19) is quite eerie, symptomatically, as patients with SARS-CoV-2 infection display a wide range of symptoms ranging from mild signs to critical care condition requiring specialized management in intensive care units (ICU) (3).

Although SARS-CoV-2 has a lower mortality rate compared to severe acute respiratory syndrome (SARS)-CoV (10%) (4) and Middle East respiratory syndrome (MERS)-CoV (37%) (5), it has killed a shocking, and of course increasing, number of patients and still continues to infect and take its toll (6). Multiple lines of evidence have attested that viral infections coincide with platelet activation, either through a direct or indirect manner, contributing to increased consumption of these cells (7). It has also been reported that decreased numbers of platelets may serve as a surrogate marker for poor prognosis in a wide range of infectious diseases, including rapidly evolving  $\beta$ -coronaviruses (8), and COVID-19 shall not be considered an exception to this rule (9). Taking advantage of this fact and bearing in mind that the results of several studies reported that low platelet count is associated with increased risk of severe disease (9, 10), it is reasonable to assume that thrombocytopenic COVID-19 patients will experience disease with a higher risk of adverse outcome. To provide a well-conceptualized viewpoint demonstrating the prognostic value of platelet count in SARS-CoV-2 infection, we performed a meta-analysis of pertinent literature to evaluate whether the emergence of thrombocytopenia could discriminate between severe and non-severe cases.

## 2. Method

The PRISMA guideline was used to pertain to the necessities of performing a systematic review and meta-analysis (11). The search strategy was as follows: the keywords "platelet" OR "thrombocytopenia" AND "COVID-19" OR "coronavirus 2019" OR "2019-nCoV" OR "SARS-CoV-2" were searched in National Library of Medicine Medline/PubMed and Scopus to find articles published between December 30, 2019, and May 9, 2020. The query of ((platelet[Title/Abstract]) OR (thrombocytopenia[Title/Abstract])) AND ((COVID-19[Title/Abstract]) OR (coronavirus 2019[Title/Abstract]) OR (2019-nCoV[Title/Abstract]) OR (SARS-CoV-2[Title/Abstract]))

was searched in PubMed in English without any restriction about study type. The results of the initial search were first screened by title and abstract, and then full texts of relevant articles were selected. To strengthen the analysis, the reference list of relevant documents was also scrutinized. All the letters, reviews, editorials, case reports, comments, guidelines, and books were excluded. In addition, all articles that neither presented the information on platelet count nor provided data in the severe and non-severe COVID-19 cases were excluded. The evidence-based librarianship (EBL) Critical Appraisal Checklist was used to assess the eligibility and quality of the studies. Studies with a score higher than 75% were included (12). MS and FH scored the checklist independently, and in the case of disagreement, DB made the final decision.

Meta-analysis was conducted on the mean  $\pm$  SD platelet counts reported in the included studies to calculate the pooled mean difference in platelet count between severe and non-severe patients. To assess the existence of bias in the included studies, the funnel plot and egger plot along with egger tests were used. In case of bias, the random effect model would be fitted (13). The presence of heterogeneity among the included studies was tested using the Chi-square test, with the significance level of 0.1. After combining results, the level of heterogeneity based on the  $I^2$  statistic was categorized as follows: low > 25%, moderate > 50, and high > 75% (14). A random-effect model was used to take the study-to-study variability into account. Statistical significance was set to 0.05. The meta set command in STATA was used for meta-analysis.

## 3. Results

Overall, 4935 articles were identified in our initial search using the indicated criteria and inspecting the reference lists, with a total of 4916 articles being excluded, including 1342 letters, 610 reviews, 418 editorials, 210 case reports, 190 comments, 10 guidelines, and 2 books. The aforementioned articles and also others that either did not fulfill information on the platelet count or provided incomplete information were excluded (2134 articles). The main features of the selected studies including country/city, sample size, and their definition of severe cases are summarized in Table 1. In addition, as represented in this table, demographic characteristics (sample size, age, and sex) of both severe and non-severe COVID-19 patients were collected for all the included studies. On aggregate, we analyzed the results of the platelet count of a total of 3383 patients, 744 (21.9%) of whom were cases with severe disease. The number of cases ranged between 18-1099, whilst the number of severe cases \_\_though with different definitions\_\_ varied between 6-173. The results of platelet count for both severe and non-severe COVID-

**Table 1:** Main features of the selected studies

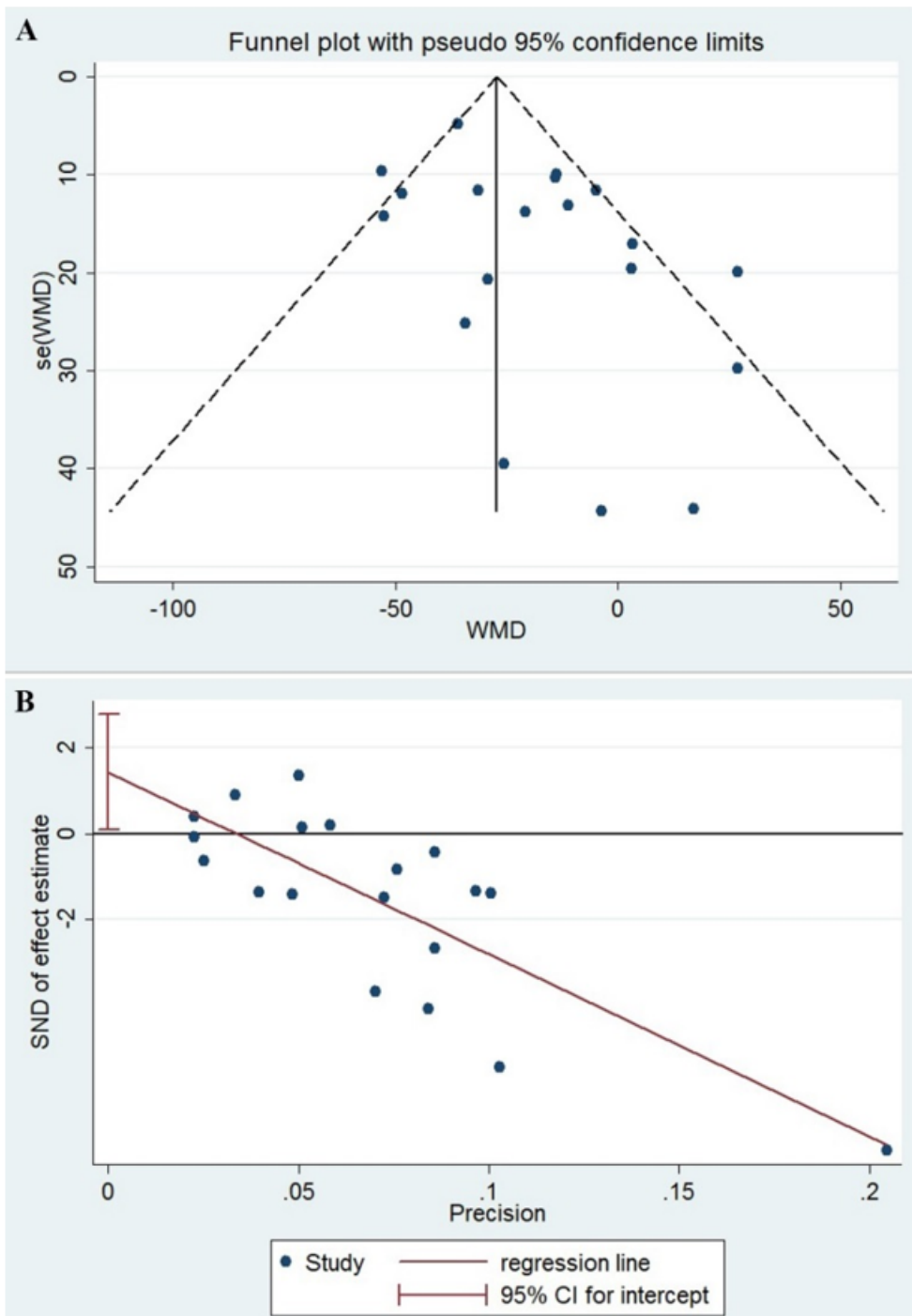
Study	Country, City	Sample size	Severity definition	Severe patients			Non-severe patients		
				N, %	Age, years	Female, %	N, %	Age, years	Female, %
Huang et al. (24)	China, Wuhan	41	ICU admission	13 (31.7)	49 (41, 61)	2 (15)	28 (68.3)	49 (41, 57.5)	9 (32)
Cao et al. (28)	China, Shanghai	198	ICU admission	19 (9.6)	63.7 (16.8)	2 (10.5)	179 (90.4)	48.6 (15.6)	95 (53.1)
Zhang et al. (29)	China, Wuhan	221	WHO guideline (30)	55 (24.9)	62 (52-74)	20 (36.4)	166 (75.1)	51 (36-64.3)	93 (56)
Wan et al. (31)	China, Chongqing	135	ICU admission; M. Ventilation	40 (29.6)	56 (52-73)	19 (47.5)	95 (70.4)	44 (33-49)	43 (45.3)
Wang et al. (32)	China, Wuhan	138	ICU admission	36 (26.1)	66 (57-78)	14 (38.9)	102 (73.9)	51 (37-62)	49 (48)
Zhou et al. (33)	China, Wuhan	191	Death	54 (28.3)	69 (63, 76)	16 (30)	137 (71.7)	52 (45, 58)	56 (41)
Gong et al. (34)	China, Wuhan/ Guangdong	189	NR	28 (14.8)	63.5 (54.5;72)	12 (42.9)	161 (85.2)	45 (33, 62)	89 (55.3)
Liu et al. (35)	China, Chongqing	51	WHO guideline (30)	7 (13.7)	52 (44-60)	3 (42.9)	44 (86.3)	44 (33-49)	16 (36.4)
Qian et al. (36)	China, Zhejiang	91	Respiratory distress/insufficiency	9 (9.9)	66 (54, 80)	NA	82 (90.1)	49 (35.5;56)	NA
Guan et al. (37)	China, 30 provinces	1099	ICU admission, M. ventilation, Death	173 (15.7)	52 (40, 65)	73 (42.2)	926 (84.3)	45 (34, 57)	386 (41.8)
Wang et al. (38)	China, Wuhan	69	SpO <sub>2</sub> <90	14 (20.2)	70.5 (62, 77)	7 (50)	55 (79.8)	37 (32, 51)	30 (55)
Fan et al. (39)	Singapore	67	ICU admission	9 (13.4)	54 (47-62)	3 (33.3)	58 (86.6)	41 (32-53)	27 (48.6)
Young et al. (26)	Singapore	18	Required supplemental O <sub>2</sub>	6 (33.3)	56 (47-73)	4 (67)	12 (66.7)	37 (31-56)	4 (42)
Chen et al. (40)	China, Wuhan	21	SpO <sub>2</sub> <93%	11 (52.4)	63.9 (9.6)	1 (9.1)	10 (47.6)	51.4 (13.7)	3 (30)
Tang et al. (41)	China, Wuhan	449	Death	134 (29.8)	68.7 (±11.4)	44 (32.83)	315 (70.2)	63.7 (±12.2)	137 (43.5)
Yang et al. (42)	China, Wuhan	52	Death	32 (61.5)	64.6 (11.2)	11 (34)	20 (38.5)	51.9 (12.9)	6 (30)
Wei Liu et al. (43)	China, Wuhan	78	Admission to ICU, Death	11 (14.1)	66 (51, 70)	4 (36.4)	67 (85.9)	37 (32, 41)	35 (52.2)
Ruan et al. (44)	China, Wuhan	150	Death	68 (45.3)	67 (15, 81)	19 (28)	82 (54.7)	50 (44, 81)	29 (35)
Wang et al. (25)	China, Fuyang/ Anhui	125	PaO <sub>2</sub> /FIO <sub>2</sub> ≤100 mmHg	25 (20)	49.4 (±13.64)	9 (36)	100 (80)	39.4 (±14.8)	45 (45)

N: Number; ICU: Intensive care unit; WHO: World health organization; NR: Not reported; M. ventilation: mechanical ventilation.

19 patients were collected from all of the included studies and are shown in Table 2. As represented in Figure 1, the asymmetry in the funnel plot reflects the presence of publication bias, which is also confirmed through the egger plot (Figure 2) and egger test (P=0.04). The chi-square test for heterogeneity was significant (P=0.001), with the I<sup>2</sup> value of 58%, implying medium dissimilarity in the included studies. Then, a random effect model was applied to take into

account the heterogeneity and the publication bias. The results revealed that the platelet pooled mean difference (%95 Confidence Interval) was -21.5 [(-31.57, -11.43), P<0.001]. As represented in Figure 2, non-severe cases of COVID-19 had a significantly higher number of platelets compared to patients with severe disease. Although our data show that thrombocytopenic COVID-19 patients experience a more severe disease than SARS-CoV-2-infected cases with normal platelet count,



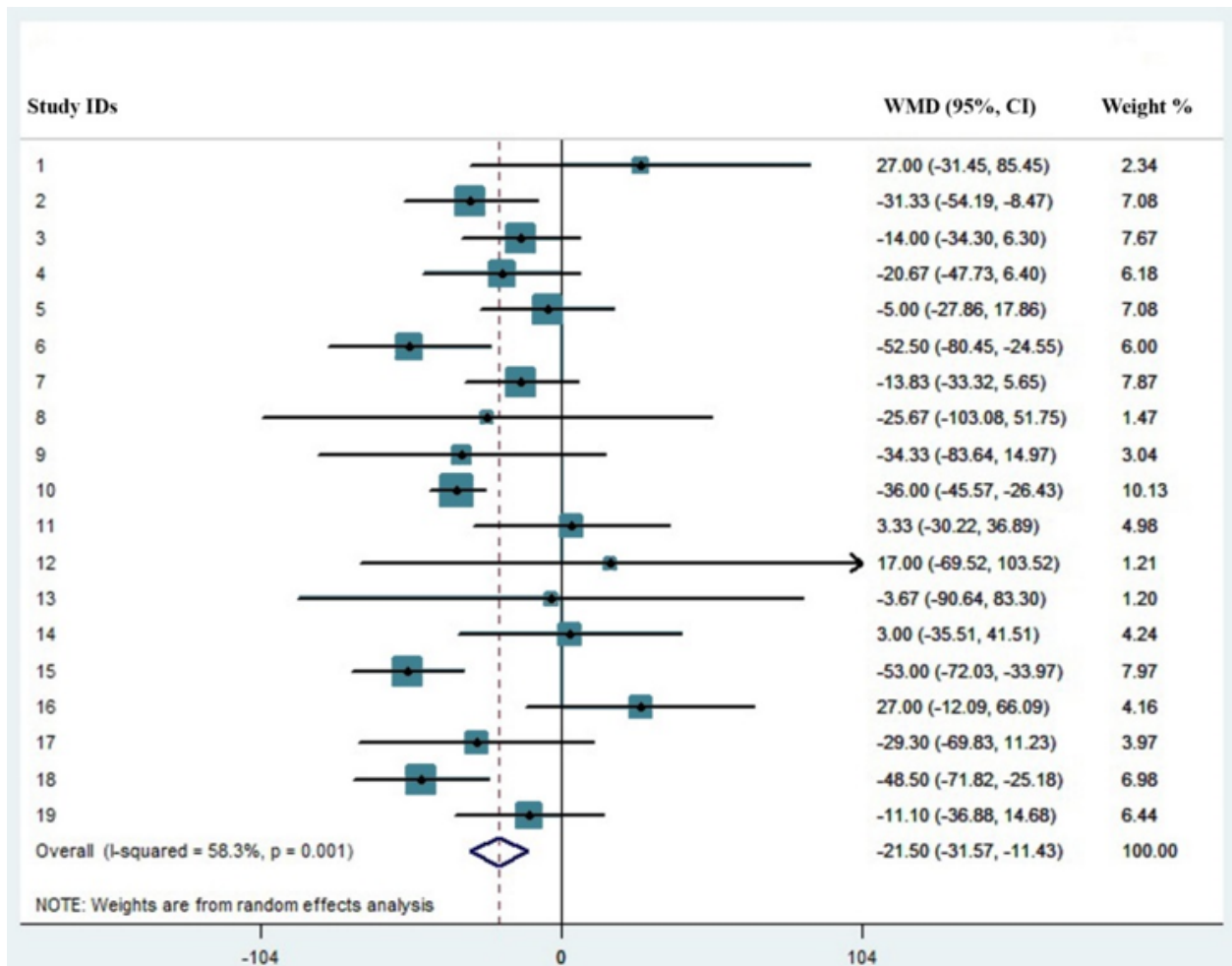


**Figure 1:** A) The funnel plot with pseudo 95% confidence limits for publication bias in the included studies. B) The egger plot for publication bias the included studies.

several limitations such as low sample size and uneven description of disease outcome, along with incomplete information on sampling time might have adversely affected our analysis.

#### 4. Discussion

One of the darkest periods in the history of human medicine is recorded in 2020. It is not the dreaded nuclear war, but an outbreak of an insidious member of  $\beta$ -coronaviruses that



**Figure 2:** Platelet mean difference count for patients with severe and non-severe COVID-19.

wages a full-scale war against human health, intimidating the peoples of nations and continents (15). Considering the fact that SARS-CoV-2 infection has brought the national health-care systems of nearly all countries \_\_even those with highly developed medical facilities\_\_ to their knees, battling with this lethal virus seems to be not easy but not impossible either. Regardless of its innate designation (16), the influential role of the laboratory is far beyond the etiological identification of pathogens and it is now practically established that this branch of the medical science is effectively contributing to determining the prognosis of a wide range of human diseases, including COVID-19 (17, 18). Even though the results of a recent study to establish a prediction model for the prognosis of SARS-CoV-2 infection (19) introduced C reactive protein, lactic dehydrogenase, and lymphocyte count as the most valuable laboratory parameters reflecting COVID-19 severity, articles continuously introducing novel biomarkers with the ability to predict disease outcome are published daily. Therefore, considering the results of several recent

studies reporting the prognostic value of platelet in patients with COVID-19, it might not be unrealistic to assume that a decreased number of platelets may potentially serve as a simple and readily available biomarker to predict disease severity.

Patients with severe diseases frequently have decreased numbers of platelets, and the emergence of thrombocytopenia is usual in such a situation mainly as a result of unrestricted consumption due to intravascular coagulopathy, often evolving towards disseminated intravascular coagulation (DIC) (20). Notably, the results of our recent meta-analysis revealed that the elevated level of D-dimers may predict the progression of COVID-19 toward an unfavorable prognosis, further highlighting the fact that SARS-CoV-2-induced coagulopathy is responsible for disease severity (21). While the precise explanation for the occurrence of thrombocytopenia in patients with COVID-19 is unknown, direct infection of bone marrow cells by the virus, platelet destruction by the immune system, and platelet aggregation in the lungs,



**Table 2:** Values of platelet count in severe and non-severe COVID-19 patients

	Platelet count	
	Non-severe	Severe
Huang et al. (24)	149 (131-263)	196 (165-263)
Cao et al. (28)	177 (143-220)	147 (120-179)
Zhang et al. (29)	175 (136-213)	169 (111-202)
Wan et al. (31)	170 (136-234)	147 (118-213)
Wang et al. (32)	165 (125-188)	142 (119-202)
Zhou et al. (33)	220 (168-271)	165.5 (107-229)
Gong et al. (34)	180 (147- 221)	167 (139.5-200)
Liu et al. (35)	192 (139-237)	150 (116-225)
Qian et al. (36)	198 (144-248)	152 (127-208)
Guan et al. (37)	172 (139-212)	137 (99-179)
Wang et al. (38)	172 (138-206)	167 (144-215)
Fan et al. (39)	201 (157-263)	217 (154-301)
Young et al. (26)	159 (128-213)	156 (116-217)
Chen et al. (40)	161 ±44.2	164 ±45.8
Tang et al. (41)	231 ±99	178 ±92
Yang et al. (42)	164 ±74	191 ±63
Wei Liu et al. (43)	173.20 ±55.37	143.90 ±64.81
Ruan et al. (44)	222.1 ±78.0	173.6 ±67.7
Wang et al. (25)	169.5 (142-212)	163.4 ±60.263

Data are presented as mean ± standard deviation or mean (95% confidence interval).

resulting in microthrombi were proposed as the plausible mechanisms underlying decreased platelet counts in those affected with the disease (20, 22). Since platelets are released from fully mature megakaryocytes residing in the lung, structural change or decrease in the pulmonary capillary bed may also provoke unfortunate defragmentation of platelets (23). To provide a clear viewpoint demonstrating the prognostic value of platelet count in this novel infection, we performed a meta-analysis of pertinent literature representing information on the indicated parameter in patients with a clinically validated definition of severe disease. Notably, the mean and median ages of severely ill patients were more than 50 years old in all the studies, except for Huang et al. (24) and Wang et al. (25) studies. Besides, the percentage of men with severe disease was greater than women, except for the report by Young et al. (26); further highlighting the fact that male sex and old age are amongst significant risk factors for progression of COVID-19 towards an unfavorable outcome. The result of our meta-analysis of 19 studies, totaling 3383 COVID-19 patients with 744 (21.9%) severe cases, revealed that low platelet count is associated with increased risk of severe disease with the pooled mean difference of -21.5 (%95 CI: -31.57, -11.43), and thus proposed that thrombocytopenic COVID-19 patients will experience disease with a higher risk of adverse outcome. In agreement with these findings, a recent study conducted on 383 patients, 49 (12.8%) of whom died, proposed platelet count as an independent risk factor associated with in-hospital mortality and reported that increment of per  $50 \times 10^9/L$  in platelets was associated with 40% de-

crease in mortality (hazard ratio: 0.60, 95%CI: 0.43, 0.84) (27). In conclusion, we believe that daily monitoring of the platelet count has a specific clinical significance in this infection and the appearance of thrombocytopenia may mirror the progression of COVID-19 toward an unfavorable outcome. Although the results of this study declared the prognostic significance of platelet count in SARS-CoV-2 infection, several limitations ranging from inadequate studies to fickle study design, either concerning different sampling times or underlying medical conditions, may have adversely affected our analysis. Since in some papers, mean ± SD was only shown in graphs, it was not possible to include them. In addition, several articles did not mention either study population or clear statistical analysis. Asymmetrical form of funnel plot also suggests that there is publication bias, showing overestimation in studies with lower sample size. Finally, since COVID-19 is a recent hot topic and researchers are mostly motivated to publish their papers in local and regional journals as soon as possible, restricting to English-language search was another review-level limitation.

### 5. Conclusion

Daily monitoring of platelet count has specific clinical significance in this infection, and the appearance of thrombocytopenia may mirror the progression of COVID-19 towards an unfavorable outcome.



## 6. Declarations

### 6.1. Acknowledgements

The authors would like to thank Shahid Beheshti University of Medical Sciences for supporting this study.

### 6.2. Authors Contributions

DB, FH, MS and NA: Data collection and checklist scoring. DB, FH and MF: Data analysis and interpretation of the results. DB: Writing - original draft. DB, MR and HA: Conceptualization, Writing - review & editing.

### 6.3. Funding Support

None.

### 6.4. Conflict of Interest

The authors declared no potential conflicts of interest concerning the research, authorship, and/or publication of this article.

## References

1. Organization WH. Director-General's remarks at the media briefing on 2019-nCoV on 11 February 2020. [Internet] World Health Organization. 2020.
2. Jordan RE, Adab P, Cheng K. Covid-19: risk factors for severe disease and death. British Medical Journal Publishing Group; 2020.
3. Xu Z, Shi L, Wang Y, Zhang J, Huang L, Zhang C, et al. Pathological findings of COVID-19 associated with acute respiratory distress syndrome. *The Lancet respiratory medicine*. 2020;8(4):420-2.
4. Organization WH. Summary of probable SARS cases with onset of illness from 1 November 2002 to 31 July 2003. [http://www.who.int/csr/sars/country/table2004\\_04\\_21/en/index.html](http://www.who.int/csr/sars/country/table2004_04_21/en/index.html). 2003.
5. Organization WH. Middle East respiratory syndrome coronavirus (MERS-CoV). (2016) <http://www.who.int/emergencies/mers-cov/en>. Erisim Tarihi.1.
6. Baud D, Qi X, Nielsen-Saines K, Musso D, Pomar L, Favre G. Real estimates of mortality following COVID-19 infection. *The Lancet infectious diseases*. 2020.
7. Assinger A. Platelets and infection-an emerging role of platelets in viral infection. *Front Immunol*. 2014;5:649.
8. Drosten C, Seilmaier M, Corman VM, Hartmann W, Scheible G, Sack S, et al. Clinical features and virological analysis of a case of Middle East respiratory syndrome coronavirus infection. *The Lancet infectious diseases*. 2013;13(9):745-51.
9. Lippi G, Plebani M, Henry BM. Thrombocytopenia is associated with severe coronavirus disease 2019 (COVID-19) infections: A meta-analysis. *Clin Chim Acta*. 2020.
10. Yang X, Yang Q, Wang Y, Wu Y, Xu J, Yu Y, et al. Thrombocytopenia and Its Association with Mortality in Patients with COVID-19. *J Thromb Haemost*. 2020.
11. Eldredge J. Evidence-based librarianship: the EBL process. *Library hi tech*. 2006;24(3):341-54.
12. Cleyle S, Glynn L. A critical appraisal tool for library and information research. *Library Hi Tech*. 2006.
13. Van Aert RC, Wicherts JM, Van Assen MA. Publication bias examined in meta-analyses from psychology and medicine: A meta-meta-analysis. *PLoS One*. 2019;14(4).
14. Higgins JP, Thompson SG, Deeks JJ, Altman DG. Measuring inconsistency in meta-analyses. *BMJ*. 2003;327(7414):557-60.
15. Singhal T. A review of coronavirus disease-2019 (COVID-19). *The Indian Journal of Pediatrics*. 2020;1-6.
16. Lippi G, Plebani M. A modern and pragmatic definition of Laboratory Medicine. *Clinical Chemistry and Laboratory Medicine (CCLM)*. 2020;1(ahead-of-print).
17. Lippi G, Plebani M. The critical role of laboratory medicine during coronavirus disease 2019 (COVID-19) and other viral outbreaks. *Clinical Chemistry and Laboratory Medicine (CCLM)*. 2020;1(ahead-of-print).
18. Pourbagheri-Sigaroodi A, Bashash D, Fateh F, Abolghasemi H. Laboratory Findings in COVID-19 Diagnosis and Prognosis. *Clin Chim Acta*. 2020.
19. Wynants L, Van Calster B, Bonten MM, Collins GS, Debray TP, De Vos M, et al. Prediction models for diagnosis and prognosis of covid-19 infection: systematic review and critical appraisal. *BMJ*. 2020;369.
20. Xu P, Zhou Q, Xu J. Mechanism of thrombocytopenia in COVID-19 patients. *Ann Hematol*. 2020;1-4.
21. Bashash D, Abolghasemi H, Salari S, Olfatifar M, Eshghi P, Akbari ME. *Iranian Journal of Blood & Cancer*.
22. Amgalan A, Othman M. Exploring possible mechanisms for COVID-19 induced thrombocytopenia: Unanswered Questions. *J Thromb Haemost*. 2020.
23. Yang M, Ng MH, Li CK. Thrombocytopenia in patients with severe acute respiratory syndrome. *Hematology*. 2005;10(2):101-5.
24. Huang C, Wang Y, Li X, Ren L, Zhao J, Hu Y, et al. Clinical features of patients infected with 2019 novel coronavirus in Wuhan, China. *The lancet*. 2020;395(10223):497-506.
25. Wang R, Pan M, Zhang X, Fan X, Han M, Zhao F, et al. Epidemiological and clinical features of 125 Hospitalized Patients with COVID-19 in Fuyang, Anhui, China. *Int J Infect Dis*. 2020.
26. Young BE, Ong SWX, Kalimuddin S, Low JG, Tan SY, Loh J, et al. Epidemiologic features and clinical course of patients infected with SARS-CoV-2 in Singapore. *JAMA*.



- 2020;323(15):1488-94.
27. Liu Y, Sun W, Guo Y, Chen L, Zhang L, Zhao S, et al. Association between platelet parameters and mortality in coronavirus disease 2019: Retrospective cohort study. *Platelets*. 2020:1-7.
  28. Cao M, Zhang D, Wang Y, Lu Y, Zhu X, Li Y, et al. Clinical Features of Patients Infected with the 2019 Novel Coronavirus (COVID-19) in Shanghai, China. *medRxiv*. 2020.
  29. Zhang G-q, Hu C, Luo L-j, Fang F, Chen Y-f, Li J-g, et al. Clinical features and treatment of 221 patients with COVID-19 in Wuhan, China. *China* (2/27/2020). 2020.
  30. Organization WH. Clinical management of severe acute respiratory infection when novel coronavirus (nCoV) infection is suspected, Interim guidance, 13 March 2020. 2020.
  31. Wan S, Xiang Y, Fang W, Zheng Y, Li B, Hu Y, et al. Clinical Features and Treatment of COVID-19 Patients in North-east Chongqing. *J Med Virol*. 2020.
  32. Wang D, Hu B, Hu C, Zhu F, Liu X, Zhang J, et al. Clinical characteristics of 138 hospitalized patients with 2019 novel coronavirus-infected pneumonia in Wuhan, China. *JAMA*. 2020.
  33. Zhou F, Yu T, Du R, Fan G, Liu Y, Liu Z, et al. Clinical course and risk factors for mortality of adult inpatients with COVID-19 in Wuhan, China: a retrospective cohort study. *The Lancet*. 2020.
  34. Gong J, Ou J, Qiu X, Jie Y, Chen Y, Yuan L, et al. A Tool to Early Predict Severe Corona Virus Disease 2019 (COVID-19): A Multicenter Study using the Risk Nomogram in Wuhan and Guangdong, China. *Clin Infect Dis*. 2020.
  35. Jian-ya G. Clinical characteristics of 51 patients discharged from hospital with COVID-19 in Chongqing, China. *medRxiv*. 2020.
  36. Qian G-Q, Yang N-B, Ding F, Ma AHY, Wang Z-Y, Shen Y-F, et al. Epidemiologic and Clinical Characteristics of 91 Hospitalized Patients with COVID-19 in Zhejiang, China: A retrospective, multi-centre case series. *QJM: An International Journal of Medicine*. 2020.
  37. Guan W-j, Ni Z-y, Hu Y, Liang W-h, Ou C-q, He J-x, et al. Clinical characteristics of coronavirus disease 2019 in China. *N Engl J Med*. 2020.
  38. Wang Z, Yang B, Li Q, Wen L, Zhang R. Clinical Features of 69 Cases With Coronavirus Disease 2019 in Wuhan, China. *Clin Infect Dis*. 2020.
  39. Fan BE, Chong VCL, Chan SSW, Lim GH, Lim KGE, Tan GB, et al. Hematologic parameters in patients with COVID-19 infection. *Am J Hematol*. 2020.
  40. Chen G, Wu D, Guo W. Clinical and immunologic features in severe and moderate forms of Coronavirus Disease 2019. *medRxiv* 2020. DOI.10(2020.02):16.20023903.
  41. Tang N, Bai H, Chen X, Gong J, Li D, Sun Z. Anticoagulant treatment is associated with decreased mortality in severe coronavirus disease 2019 patients with coagulopathy. *J Thromb Haemost*. 2020.
  42. Yang X, Yu Y, Xu J, Shu H, Liu H, Wu Y, et al. Clinical course and outcomes of critically ill patients with SARS-CoV-2 pneumonia in Wuhan, China: a single-centered, retrospective, observational study. *The Lancet Respiratory Medicine*. 2020.
  43. Liu W, Tao Z-W, Lei W, Ming-Li Y, Kui L, Ling Z, et al. Analysis of factors associated with disease outcomes in hospitalized patients with 2019 novel coronavirus disease. *Chin Med J*. 2020.
  44. Ruan Q, Yang K, Wang W, Jiang L, Song J. Clinical predictors of mortality due to COVID-19 based on an analysis of data of 150 patients from Wuhan, China. *Intensive Care Med*. 2020:1-3.