



# Evaluation of the Ability of *Malassezia* Species in Biofilm Formation

Mahdi Zareei<sup>1</sup>, Shahla Roudbar Mohammadi<sup>1\*</sup>, Shirin Shahbazi<sup>2</sup>, Maryam Roudbary<sup>3</sup> and Zeinab Borjian Borujeni<sup>4</sup>

<sup>1</sup>Department of Medical Mycology, Faculty of Medical Sciences, Tarbiat Modares University, Tehran, Iran

<sup>2</sup>Department of Medical Genetics, Faculty of Medical Sciences, Tarbiat Modares University, Tehran, Iran

<sup>3</sup>Department of Medical Mycology and Parasitology, School of Medicine, Iran University of Medical Sciences, Tehran, Iran

<sup>4</sup>Department of Medical Mycology, School of Public Health, Tehran University of Medical Sciences, Tehran, Iran

\*Corresponding author: Shahla Roudbar Mohammadi, Faculty of Medical Sciences, Department of Medical Mycology, Tarbiat Modares University, Jalal Al Ahmad St, Tehran, Iran. Tel: +98-2182884540, E-mail: sh.mohammadi@modares.ac.ir

Received 2016 July 31; Revised 2017 March 11; Accepted 2017 March 14.

## Abstract

**Background:** Although *Malassezia* genus are part of the skin normal flora, under certain conditions, they become pathogenic. Catheter-related fungemia, caused by *Malassezia*, which is associated with biofilm formation, is considered a nosocomial infection.

**Objectives:** The aim of this study was to evaluate the ability of *Malassezia globosa* and *Malassezia restricta* in biofilm formation.

**Methods:** Biofilm formation was carried out using catheter segments in 12-well plates. Results were measured using 3-(4, 5-dimethylthiazol-2-yl)-2, 5-diphenyl-tetrazolium bromide (MTT) colorimetric assay in 96-well plates. The data was analyzed using univariate Analysis of Variance (ANOVA) or Repeated Measures ANOVA. P values of  $\leq 0.05$  were considered statistically significant. Statistical analyses were performed using IBM SPSS Statistics version 22.0 software.

**Results:** Both *M. globosa* and *M. restricta* species were able to form biofilms in vitro. *Malassezia restricta* was more capable than *M. globosa* to form biofilms, yet, significant differences were not observed ( $P = 0.192$ ).

**Conclusions:** Over time, *Malassezia* biofilms matured. Due to the above species ability in forming biofilm, they could play an important role in fungemia that should be considered in therapeutic procedures.

**Keywords:** Biofilm, Fungemia, Catheter, *Malassezia*

## 1. Background

*Malassezia* biofilm is produced by a community of these bacteria, alone or mixed with other microorganisms, which are attached to the living and non-living surfaces and are difficult to separate from surfaces. This structure has physical and chemical resistance, and resistance to antimicrobial agents is almost 2000 times higher compared with planktonic cells. Biofilm of *Malassezia* is a structure that is organized as single-layer or multi-layer of blastoconidia. Biofilms, with the ability of producing an extracellular matrix, acts as a barrier against the influence of drugs (1-5). Although *Malassezia* genus is part of the skin normal flora, under certain conditions, becomes pathogenic and in the recent years has been reported as an emerging pathogen (1, 6-9). The ability of these fungi in colonization on the catheter is associated with biofilm formation. Catheters are frequently used in new medical devices, especially at the Intensive Care Unit (ICU) and their use may lead to local or systemic infection (1, 5, 10-12). Since nosocomial infections affect approximately 10% to 30% of patients at the ICU and are associated with significant mortality, it should be noted that a significant proportion of these

infections are due to biofilm formation (5, 10-12); however, fungal biofilms have been studied less than bacterial biofilms. Most studies are about *Candida* (13-16), however, there have been only a few studies on *Malassezia* biofilms (1, 4, 5, 13, 17).

## 2. Objectives

The aim of this study was to evaluate the ability of *Malassezia globosa* and *Malassezia restricta* species in biofilm formation.

## 3. Methods

After preparing the standard species of *M. restricta* (CBS 7877) and *M. globosa* (CBS 7966) from the Institute (Centraalbureau voor Schimmelcultures, Utrecht, The Netherlands), the study was conducted at the Medical mycology laboratory, faculty of Medical Sciences, Tarbiat Modares University.

### 3.1. Evaluation of Biofilm Formation

Catheter segments of Certofix® Mono V 420 central venous catheter (B. Braun, Milano, Italy) with 1 × 1 cm dimensions were prepared in 12-well plates (Nalge Nunc International, NY, USA). After suspension of the *Malassezia* yeast in a concentration of 10<sup>6</sup> CFU/mL Phosphate Buffered Saline (PBS, PH = 7.2 - 7.4) biofilm was formed using the medium modified Dixon broth (made of 3.6 g malt extract (Merck, Germany), 0.6 g mycological peptone, 2 g dried beef bile (Sigma, UK), 1 mL Tween 40 (Merck, Germany), 0.2 mL glycerol (Merck, Germany), 0.2 mL oleic acid (Merck, Germany), 5 mg chloramphenicol, 50 mg cycloheximide and 100 mL distilled water)(13). The test wells were selected and catheter segments were divided in doubled form and incubated in fetal bovine serum (FBS) for 24 hours (h) at 37°C on a rocker. Next, catheter segments were placed in new 12-well plates and 4 mL of culture medium mDixon broth containing *Malassezia* yeast at a concentration of 10<sup>6</sup> CFU/mL, was poured in each well to submerge catheter segments and then they were incubated in a 75 rpm (round per minute) shaking incubator for 24 hours at 32°C for cell attachment to the catheter surface. After a period of time, to separate the loose and non-binding cells (planktonic cells), catheter segments were washed with PBS and 4 mL of culture medium mDixon broth containing 100 mM of glucose was added to the wells (4, 18). After incubation at 32°C for 48, 96, and 144 hours in a 75 rpm shaking incubator (5), catheter segments were removed from wells and formed biofilms on the surfaces were scraped by a plastic spatula (cell scraping) and were poured in 96-well microplates (Nalge Nunc International, NY, USA). After addition of 50 μL of distilled water and 10 μL MTT (Sigma Chemical Co., St Louis, MO, USA) at a concentration of 5 mg/mL, they were incubated for 4 hours at 32°C. Finally, by adding 50 μL of Dimethyl Sulfoxide (DMSO) solution to all wells and incubation for 10 minutes at 32°C, the percentage of attached cells on the surface of the catheter segments was measured by using the enzyme linked immunosorbent assay (ELISA) absorbance reader (Stat Fax 2000, USA) at 540 nm. In this method, the well containing catheter segments with mDixon broth medium and without yeast cell suspension was used as a negative control.

### 3.2. Evaluation of Biofilm Formation on the Catheter Segments Through Scanning Electron Microscopy (SEM)

Two catheter segments with biofilms formed on them after 96 hours were studied with a scanning electron microscope according to a previously described method (4) (Leo, Cambridge, UK).

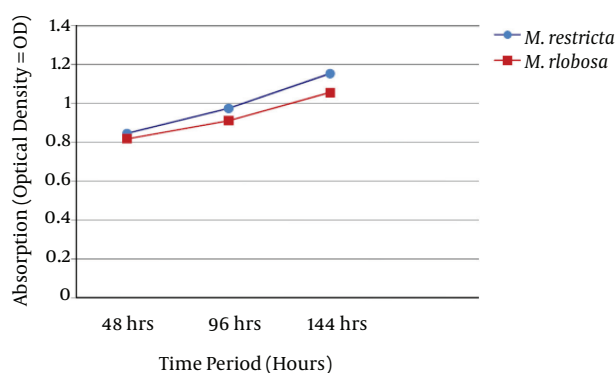
### 3.3. Statistical Analysis

Normality of data was assessed using the One-Sample Kolmogorov-Smirnov Test (with Lilliefors Significance Correction). After collecting and classifying the data, they were analyzed using univariate analysis of variance (ANOVA) or repeated measures ANOVA. A value of  $P \leq 0.05$  was considered statistically significant. Statistical analyses were performed using IBM SPSS Statistics version 22 software (19).

## 4. Results

Both *M. globosa* and *M. restricta* species were able to form in vitro biofilms. At three time points, *Malassezia* biofilm matured and had a linear increase. Optical density (OD) results of biofilm formation after periods of 48, 96 and 144 hours are shown in Figure 1. *Malassezia restricta* was more capable than *M. globosa* to form a biofilm, yet, between them, a significant difference was not observed ( $P = 0.192$ ). Figure 2 shows the SEM results of two *M. globosa* and *M. restricta* species.

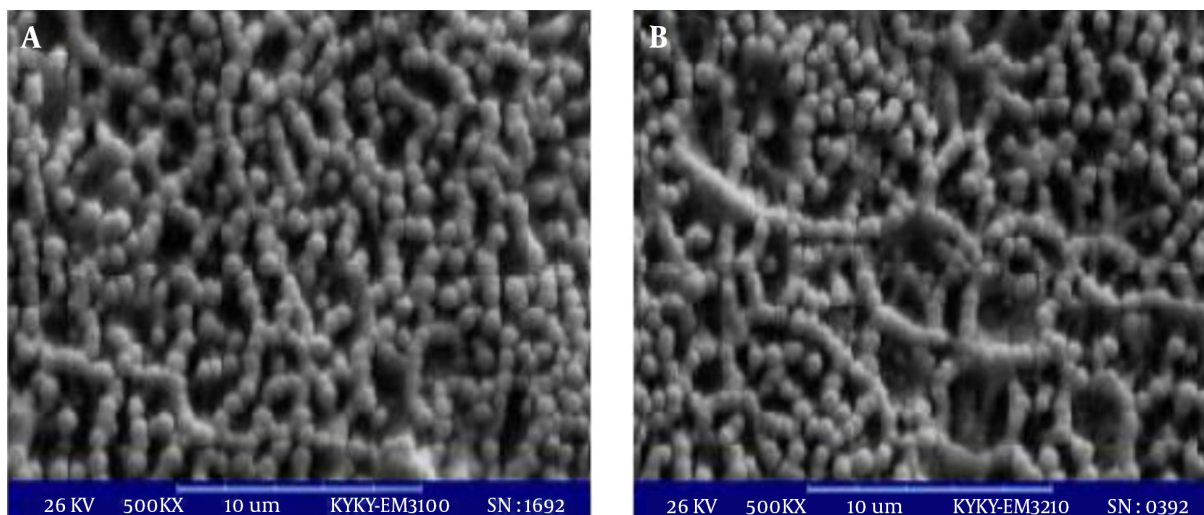
**Figure 1.** Comparison of the Ability to Form Biofilms by *Malassezia restricta* and *Malassezia globosa* at Three Time Points



Significant differences were not observed between the two species during the above time points ( $P = 0.192$ ).

## 5. Discussion

Catheter-related fungemia caused by *Malassezia* is reported in premature infants, immune compromised children, adults with parenteral nutrition, and individuals with immune deficiency (13). Reports show the role of *Malassezia* in catheter-related biofilm formation and its pathogenicity in etiology of infections, such as fungemia (5, 13, 20-22). In this study, *M. globosa* and *M. restricta* species



**Figure 2.** Scanning Electron Microscopy Showing Biofilm Structures of A, *M. globosa* and B, *M. restricta*

were used to evaluate the in vitro ability of biofilm formation on catheter surfaces.

One of the common and standard methods to evaluate biofilm formation is the assessment of cells viability after treatment with antifungal drugs. A vital MTT dye could be used for this purpose. The MTT test is a semi-quantitative colorimetric method to measure cell viability (23, 24). This method was used in the current study.

In this study, both *M. globosa* and *M. restricta* species were able to form in vitro biofilms. *Malassezia restricta* was more capable than *M. globosa* to form a biofilm and after periods of 48, 96 and 144 hours, the OD results of *M. restricta* wells were more than *M. globosa* wells. However, between them, significant differences were not observed ( $P = 0.192$ , Figure 1). This study shows that the two *M. globosa* and *M. restricta* species could form in vitro biofilm, similar to *M. pachydermatis* species (4, 5). According to this study and other laboratory and clinical studies (4, 5, 13), it has been concluded that *Malassezia* species are able to form biofilms in two in vivo and in vitro models and give rise to nosocomial infections in children and adults.

Biofilm formation by microorganisms, including fungi varies with time (5, 10, 18, 25). In this study, biofilm mass (OD value) had a linear increase as time increased, which is in accordance with the study of Cannizzo (5). In comparison with mature biofilms of *Candida* that are formed within 48 hours, the *Malassezia* biofilm requires 4 days to mature and the structure of *Malassezia* biofilm is simpler than *Candida*. Attachment and nutritional properties of *Malassezia* may be the cause of this difference (5).

There are a few studies about biofilm formation of *Malassezia* species and reports are often about *M. pachydermatis*. However, there is not enough information available regarding other species. In this study, to evaluate biofilm formation, two *M. globosa* and *M. restricta* species were used for the pilot study. These species were standard strains and in terms of the ability to form biofilms (OD value) could be different from results of clinical isolates. According to previous studies, most of the isolates (95%), regardless of the area of isolation being a skin lesion or normal skin, were capable to form biofilms, yet their quantity was variable among different strains (4, 5). Also, genotypic studies have shown that the ability to form biofilms and their quantity could be variable among different genotypes (4). Strain dependence of biofilm formation that has been previously suggested for *Candida*, could be due to physiological and pathological characteristics of yeast and in the case of *Malassezia* could be dependent on phospholipase activity (4). On the other hand, clinically, *Malassezia* colonization on the catheter could vary in different wards of the hospital (13). Therefore, due to differences in the ability and quantity of biofilm formation among *Malassezia* strains and genotypes, although, the in vitro model conditions of biofilm formation are not very different from in vivo situation (26), future comprehensive studies on clinical isolates of *Malassezia* with more samples are suggested to determine whether colonization and biofilm formation is related to clinical findings of patients.

### 5.1. Conclusion

Both *M. globosa* and *M. restricta* species were able to form in vitro biofilms. Over time, *Malassezia* biofilms had

matured. Due to the two above-mentioned species ability in forming biofilms, they could play an important role in fungemia and this should be considered in therapeutic procedures.

### Acknowledgments

The researchers thank all the members of the department of Medical Mycology, faculty of Medical Sciences, Tarbiat Modares University, Tehran, Iran.

### Footnotes

**Authors' Contribution:** All of the authors cooperated in this study.

**Funding/Support:** This study was supported in part by the department of Medical Mycology, Faculty of Medical Sciences, Tarbiat Modares University, Tehran, Iran.

### References

- Figueredo LA, Cafarchia C, Otranto D. Antifungal susceptibility of *Malassezia pachydermatis* biofilm. *Med Mycol*. 2013;**51**(8):863-7. doi: [10.3109/13693786.2013.805440](https://doi.org/10.3109/13693786.2013.805440). [PubMed: [23834283](https://pubmed.ncbi.nlm.nih.gov/23834283/)].
- Blankenship JR, Mitchell AP. How to build a biofilm: a fungal perspective. *Curr Opin Microbiol*. 2006;**9**(6):588-94. doi: [10.1016/j.mib.2006.10.003](https://doi.org/10.1016/j.mib.2006.10.003). [PubMed: [17055772](https://pubmed.ncbi.nlm.nih.gov/17055772/)].
- Chandra J, Zhou G, Ghannoum MA. Fungal biofilms and antimicrobials. *Curr Drug Targets*. 2005;**6**(8):887-94. doi: [10.2174/138945005774912762](https://doi.org/10.2174/138945005774912762). [PubMed: [16375672](https://pubmed.ncbi.nlm.nih.gov/16375672/)].
- Figueredo LA, Cafarchia C, Desantis S, Otranto D. Biofilm formation of *Malassezia pachydermatis* from dogs. *Vet Microbiol*. 2012;**160**(1-2):126-31. doi: [10.1016/j.vetmic.2012.05.012](https://doi.org/10.1016/j.vetmic.2012.05.012). [PubMed: [22682201](https://pubmed.ncbi.nlm.nih.gov/22682201/)].
- Cannizzo FT, Eraso E, Ezkurra PA, Villar-Vidal M, Bollo E, Castella G, et al. Biofilm development by clinical isolates of *Malassezia pachydermatis*. *Med Mycol*. 2007;**45**(4):357-61. doi: [10.1080/13693780701225767](https://doi.org/10.1080/13693780701225767). [PubMed: [17510859](https://pubmed.ncbi.nlm.nih.gov/17510859/)].
- Larocco M, Dorenbaum A, Robinson A, Pickering LK. Recovery of *Malassezia pachydermatis* from eight infants in a neonatal intensive care nursery: clinical and laboratory features. *Pediatr Infect Dis J*. 1988;**7**(6):398-401. doi: [10.1097/00006454-198806000-00006](https://doi.org/10.1097/00006454-198806000-00006). [PubMed: [3134645](https://pubmed.ncbi.nlm.nih.gov/3134645/)].
- Mickelsen PA, Viano-Paulson MC, Stevens DA, Diaz PS. Clinical and microbiological features of infection with *Malassezia pachydermatis* in high-risk infants. *J Infect Dis*. 1988;**157**(6):1163-8. doi: [10.1093/infdis/157.6.1163](https://doi.org/10.1093/infdis/157.6.1163). [PubMed: [3373021](https://pubmed.ncbi.nlm.nih.gov/3373021/)].
- Welbel SF, McNeil MM, Pramanik A, Silberman R, Oberle AD, Midgley G, et al. Nosocomial *Malassezia pachydermatis* bloodstream infections in a neonatal intensive care unit. *Pediatr Infect Dis J*. 1994;**13**(2):104-8. doi: [10.1097/00006454-199402000-00005](https://doi.org/10.1097/00006454-199402000-00005). [PubMed: [8190533](https://pubmed.ncbi.nlm.nih.gov/8190533/)].
- Chryssanthou E, Broberger U, Petrini B. *Malassezia pachydermatis* fungemia in a neonatal intensive care unit. *Acta Paediatr*. 2001;**90**(3):323-7. doi: [10.1080/080352501300067712](https://doi.org/10.1080/080352501300067712). [PubMed: [11332175](https://pubmed.ncbi.nlm.nih.gov/11332175/)].
- Donlan RM, Costerton JW. Biofilms: survival mechanisms of clinically relevant microorganisms. *Clin Microbiol Rev*. 2002;**15**(2):167-93. doi: [10.1128/CMR.15.2.167-193.2002](https://doi.org/10.1128/CMR.15.2.167-193.2002). [PubMed: [11932229](https://pubmed.ncbi.nlm.nih.gov/11932229/)].
- Douglas LJ. Medical importance of biofilms in *Candida* infections. *Rev Iberoam Micol*. 2002;**19**(3):139-43. [PubMed: [12825991](https://pubmed.ncbi.nlm.nih.gov/12825991/)].
- Lopez-Ribot JL. *Candida albicans* biofilms: more than filamentation. *Curr Biol*. 2005;**15**(12):R453-5. doi: [10.1016/j.cub.2005.06.020](https://doi.org/10.1016/j.cub.2005.06.020). [PubMed: [15964263](https://pubmed.ncbi.nlm.nih.gov/15964263/)].
- Curvale-Fauchet N, Botterel F, Legrand P, Guillot J, Bretagne S. Frequency of intravascular catheter colonization by *Malassezia* spp. in adult patients. *Mycoses*. 2004;**47**(11-12):491-4. doi: [10.1111/j.1439-0507.2004.01047.x](https://doi.org/10.1111/j.1439-0507.2004.01047.x). [PubMed: [15601455](https://pubmed.ncbi.nlm.nih.gov/15601455/)].
- Chandra J, Mukherjee PK, Leidich SD, Faddoul FF, Hoyer LL, Douglas LJ, et al. Antifungal resistance of candidal biofilms formed on denture acrylic in vitro. *J Dent Res*. 2001;**80**(3):903-8. doi: [10.1177/00220345010800031101](https://doi.org/10.1177/00220345010800031101). [PubMed: [11379893](https://pubmed.ncbi.nlm.nih.gov/11379893/)].
- Rajendran R, May A, Sherry L, Kean R, Williams C, Jones BL, et al. Integrating *Candida albicans* metabolism with biofilm heterogeneity by transcriptome mapping. *Sci Rep*. 2016;**6**:35436. doi: [10.1038/srep35436](https://doi.org/10.1038/srep35436). [PubMed: [27765942](https://pubmed.ncbi.nlm.nih.gov/27765942/)].
- Zareei Mahmoudabadi A, Zarrin M, Kiasat N. Biofilm Formation and Susceptibility to Amphotericin B and Fluconazole in *Candida albicans*. *Jundishapur J Microbiol*. 2014;**7**(7). e17105. doi: [10.5812/jjm.17105](https://doi.org/10.5812/jjm.17105). [PubMed: [25368806](https://pubmed.ncbi.nlm.nih.gov/25368806/)].
- Kuhn DM, Chandra J, Mukherjee PK, Ghannoum MA. Comparison of biofilms formed by *Candida albicans* and *Candida parapsilosis* on bioprosthetic surfaces. *Infect Immun*. 2002;**70**(2):878-88. doi: [10.1128/IAI.70.2.878-888.2002](https://doi.org/10.1128/IAI.70.2.878-888.2002). [PubMed: [11796623](https://pubmed.ncbi.nlm.nih.gov/11796623/)].
- Chandra J, Kuhn DM, Mukherjee PK, Hoyer LL, McCormick T, Ghannoum MA. Biofilm formation by the fungal pathogen *Candida albicans*: development, architecture, and drug resistance. *J Bacteriol*. 2001;**183**(18):5385-94. [PubMed: [11514524](https://pubmed.ncbi.nlm.nih.gov/11514524/)].
- Released I. *IBM SPSS Statistics for Windows*. 20. Armonk, NY: IBM Corp; 2013.
- Weiss SJ, Schoch PE, Cunha BA. *Malassezia furfur* fungemia associated with central venous catheter lipid emulsion infusion. *Heart Lung*. 1991;**20**(1):87-90. [PubMed: [1988397](https://pubmed.ncbi.nlm.nih.gov/1988397/)].
- Shparago NI, Bruno PP, Bennett J. Systemic *Malassezia furfur* infection in an adult receiving total parenteral nutrition. *J Am Osteopath Assoc*. 1995;**95**(6):375-7. [PubMed: [7615409](https://pubmed.ncbi.nlm.nih.gov/7615409/)].
- Iatta R, Cafarchia C, Cuna T, Montagna O, Laforgia N, Gentile O, et al. Bloodstream infections by *Malassezia* and *Candida* species in critical care patients. *Med Mycol*. 2014;**52**(3):264-9. doi: [10.1093/mmy/myt004](https://doi.org/10.1093/mmy/myt004). [PubMed: [24576998](https://pubmed.ncbi.nlm.nih.gov/24576998/)].
- Plumb JA. Cell sensitivity assays: the MTT assay. *Cancer Cell Culture: Methods and Protocols*. 2004. p.165-9.
- Fischer J, Prosenic MH, Wolff M, Hort N, Willumeit R, Feyerabend F. Interference of magnesium corrosion with tetrazolium-based cytotoxicity assays. *Acta Biomater*. 2010;**6**(5):1813-23. doi: [10.1016/j.actbio.2009.10.020](https://doi.org/10.1016/j.actbio.2009.10.020). [PubMed: [19837191](https://pubmed.ncbi.nlm.nih.gov/19837191/)].
- Ramage G, Vandewalle K, Wickes BL, Lopez-Ribot JL. Characteristics of biofilm formation by *Candida albicans*. *Rev Iberoam Micol*. 2001;**18**(4):163-70. [PubMed: [15496122](https://pubmed.ncbi.nlm.nih.gov/15496122/)].
- Coenye T, Nelis HJ. In vitro and in vivo model systems to study microbial biofilm formation. *J Microbiol Methods*. 2010;**83**(2):89-105. doi: [10.1016/j.mimet.2010.08.018](https://doi.org/10.1016/j.mimet.2010.08.018). [PubMed: [20816706](https://pubmed.ncbi.nlm.nih.gov/20816706/)].