



Non-Invasive Markers of Liver Fibrosis in Children with Chronic Hepatic Disorders

Iraj Shahramian ¹, Manijeh Khalili ², Alireza Sargazi ³, Alireza Dechal ³, Mostafa Bazi ³, Masoud Jahantigh ³, Mojtaba Delaramnasab ⁴ and Ali Bazi ^{5,*}

¹Pediatric Gastroenterology and Hepatology Research Center, Zabol University of Medical Sciences, Zabol, Iran

²Genetics of Non-Communicable Disease Research Center, Faculty of Medicine, Zahedan University of Medical Sciences, Zahedan, Iran

³Student Research Committee, Faculty of Medicine, Zabol University of Medical Sciences, Zabol, Iran

⁴Clinical Research Development Unit, Amir-Al-Momenin Hospital, Zabol University of Medical sciences, Zabol, Iran

⁵Faculty of Allied Medical Sciences, Zabol University of Medical sciences, Zabol, Iran

*Corresponding author: Pediatric Gastroenterology and Hepatology Research Center, Zabol University of Medical Sciences, Zabol, Iran. Email: m.baziali@gmail.com

Received 2020 June 15; Accepted 2020 June 15.

Abstract

Background: The applicability of non-invasive markers for predicting hepatic fibrosis in the pediatric population with chronic liver abnormalities is unclear.

Objectives: We investigated the applicability of common non-invasive liver fibrosis parameters for detecting liver fibrosis in children with chronic hepatitis.

Methods: This was a double-center study in Amir-Almomenin Hospital of Zabol and Namazi Hospital of Shiraz (2015 - 2017). Liver fibrosis was confirmed by biopsy examination. AST to platelet ratio (APRI), AST to ALT ratio (AAR), and Fibrosis-4 (FIB-4) were evaluated.

Results: Out of 47 patients, 23 (48.9%) were females, and 24 (51.1%) were males. The mean age was 9.8 ± 11.3 months. APRI and FIB-4 correlated with fibrosis stages ($r = 0.1$ and $r = 0.2$, respectively). APRI showed an AUC of 0.541 for detecting non-advanced fibrosis (stages 0, 1, and 2). AAR and FIB-4 represented AUCs of 0.622 and 0.592 for advanced fibrosis and cirrhosis, respectively. The highest sensitivity of APRI (70%) was obtained at the cut-off point of 0.81 for cirrhosis. The highest specificities for APRI were observed at 0.66 (68%) and 1.37 (68%) for fibrotic stages 0 and 2, respectively. At the thresholds of 0.71 and 0.59, AAR rendered 78% sensitivity and 90% specificity for advanced fibrosis (stages 3 and 4) and no fibrosis (stage = 0), respectively. FIB-4 showed the highest sensitivity and specificity (70% and 60%) at the cut-off point of 0.21 for detecting cirrhosis.

Conclusions: APRI, FIB-4, and AAR can be regarded as useful markers in predicting fibrotic transformation in children with various etiologies of chronic hepatitis.

Keywords: Liver Cirrhosis, Biopsy, Pediatrics, Hepatitis

1. Background

Liver fibrosis results from the accumulation of extracellular matrix proteins such as collagen in the liver tissue. This condition can then lead to portal hypertension and serious liver diseases that may need liver transplantation (1, 2). The gold standard diagnostic for liver fibrosis is the histological examination; however, this is an invasive method, especially in children (3, 4). Accordingly, the development of non-invasive predicting markers for liver fibrosis is of essential importance.

Some blood markers have been proposed as predictors of hepatic fibrosis in liver diseases, including albumin, hyaluronic acid, aspartate aminotransferase (AST) to platelet ratio (APRI), AST to alanine aminotransferase ratio

(AAR), Fibrosis-4 (FIB-4) index, and blood platelet count (5-8). The immediate benefit of using non-invasive markers of fibrosis is obviation the need for liver biopsy and possibly other more expensive procedures (9, 10). Nevertheless, the application of these non-invasive markers in clinical practice needs validation of these indicators in the context of various liver diseases and different populations.

2. Objectives

The majority of studies concerning this issue have been done in adult populations with less attention to childhood hepatitis. In the present study, we assessed the usefulness of four common non-invasive parameters, including APRI,

FIB-4, AAR, and platelet count for detecting liver fibrosis in children.

3. Methods

This was a double-center retrospective study and included patients who referred to the Liver and Gastroenterology Clinics of Amir-almomenin Hospital (Zabol, Iran), and Namazi Hospital (Shiraz, Iran). Time-span was from March 2015 to March 2017.

3.1. Inclusion and Exclusion Criteria

Those children diagnosed with chronic liver diseases were included in the study. The exclusion criteria were malignant or other systemic major diseases, immunodeficiency, and receiving previous treatments or liver transplantation.

3.2. Liver Biopsy Examination

The patients were evaluated with a liver biopsy at the time of diagnosis. Tissue samples were fixed by paraffin, alcohol, and formalin, and then were stained using hematoxylin-eosin (H&E) method. The stage of fibrosis was determined by the Metavir scale (4). Patients with fibrosis stages 0,1, or 2, were grouped as “no advanced fibrosis,” and those with fibrosis stages 3 and 4 were grouped as “advanced fibrosis” and “cirrhosis,” respectively. All tissue samples were checked by two independent trained pathologists.

3.3. Developing Non-Invasive Indicators

Three indicators, namely APRI, FIB-4, and AAR were calculated as previously described using the following calculations (9, 10).

AAR = AST: ALT ratio

APRI = AST level (U/LN) / Platelet count ($10^9/L$) $\times 100$

(ULN = upper limit of normal which was considered 40 IU/l)

FIB-4 = Age (Months) \times AST (U/L) / Platelet count ($10^9/L$) \times [ALT (U/L)] $^{\frac{1}{2}}$

Because many of our patients had very young ages (days), we used “months”- instead of “years”- for calculating FIB-4. However, all analyses were also performed in parallel using “years”, which did not show any significant difference.

3.4. Statistical Analysis

The data were entered into SPSS software version 19, and analyzed by descriptive statistics with mean and standard deviation (SD). The normal distribution of the data was assessed based on the Shapiro-Wilk test. The points with the highest sensitivity and specificity and the area under the curve (AUC) were determined using receiver operating characteristic (ROC) curve. The significance level was defined at $P < 0.05$.

4. Results

Overall, 47 patients were studied. Out of these, 23 (48.9%) were females, and 24 (51.1%) were males. The mean age of the patients was 9.8 ± 11.3 months, the youngest patient aged 24 days, and the oldest aged 48 months. Etiologies for liver disease included immune hepatitis (21, 44.8%), genetic and metabolic disorders (12, 25.5%), idiopathic neonatal hepatitis (8, 17%), biliary atresia (5, 10.6%), and congenital hepatic fibrosis (1, 2.1%).

Table 1 shows the basic biochemical and hematological characteristics of the patients regarding different etiologies.

In liver biopsy examination, 10 (21.3%) patients showed no fibrosis (stage 0), 6 (12.8%) had portal expansion without septum formation (stage 1), 13 (27.6%) showed rare septum formation (stage 2), 5 (10.7%) showed advanced fibrosis with numerous septum formation (stage 3), and 13 (27.6%) had cirrhosis (stage 4). Table 2 represents biochemical and hematologic comparisons for different liver fibrosis stages.

Considering non-invasive markers, including AAR, APRI, and FIB-4, the mean values were 1.16 ± 0.49 , 2.12 ± 2.65 , and 0.81 ± 2.52 , respectively. There were no statistically significant correlations between these markers and fibrosis stages (Figure 1).

The ROC curve analysis showed that the highest AUC value for detecting minimal or no advanced fibrosis (stage 0, 1, and 2) was related to APRI (0.541, 95% CI: 0.335 - 0.747, $P = 0.7$). For advanced fibrosis and cirrhosis (stages 3, and 4), AAR (AUC; 0.622, 95%: 0.357 - 0.888, $P = 0.3$) showed the highest diagnostic index (Figure 2).

In ROC analysis for individual fibrotic stages, the highest AUC for the diagnosis of fibrotic stages 0, 1, 2, and 3 were related to APRI (0.541), AAR (0.713), platelet count (0.692), and FIB-4 (0.694), respectively. For cirrhosis, FIB-4 rendered the highest AUC = 0.592 (Table 3). The highest sensitivity of APRI (70%) was obtained at the cut-off of 0.81 for cirrhosis. The highest specificities for APRI were related to cut-offs 0.66 (68%) and 1.37 (68%) for detecting fibrotic stages 0 and 2, respectively. Table 4 shows optimal cut-off values for

Table 1. Basic Features of Patients with Congenital Liver Diseases of Different Etiologies

Parameters	Immune Hepatitis (N = 21)	Idiopathic Neonatal Hepatitis (N = 8)	Genetic and Metabolic Disorders (N = 12)	Biliary Atresia (N = 5)	Congenital Hepatic Fibrosis (N = 1)
Age (months)	13.1 ± 12.7	2.8 ± 4.8	4.9 ± 3.6	1.1 ± 1.5	21
AST (IU/l)	186.1 ± 159.8	460 ± 576	92.2 ± 72.7	254 ± 192.7	85
ALT (IU/l)	156.8 ± 110.4	484.8 ± 676.2	87 ± 53.5	145.6 ± 79	60
ALP (IU/l)	576.1 ± 301.2	1164.5 ± 676.3	875.2 ± 275.6	1984.5 ± 78.4	319
Total bilirubin (mg/ml)	4.6 ± 6.1	0.9 ± 0.40	2 ± 2.8	6.1 ± 8.6	1.5
Red blood cell count (10 ¹² /l)	4.2 ± 0.7	4.1 ± 0.2	4.7 ± 0.3	3.8 ± 0.4	3.3
White blood cell count (10 ⁹ /l)	14.8 ± 9.7	13.9 ± 1.2	9.5 ± 2.5	11.9 ± 5	10.4
Platelet count (10 ⁹ /l)	337.6 ± 209.5	314.7 ± 181.6	301.3 ± 66.9	341 ± 25.4	196
Hemoglobin (g/dl)	10.7 ± 1.9	11.1 ± 0.7	11.7 ± 1.7	8.5 ± 1.6	7.8
Mean cell volume (fl)	79.3 ± 6.4	83.6 ± 6.6	77.9 ± 4.3	76.7 ± 3.1	78.2

Table 2. Biochemical and Hematologic Comparisons for Different Liver Fibrosis Stages in 47 Children with Congenital Liver Disease^a

Parameters	Stage 0 (N = 10)	Stage 1 (N = 6)	Stage 2 (N = 13)	Stage 3 (N = 5)	Stage 4 (N = 13)
Age (months)	8.8 ± 10.1	3.9 ± 4.5	4.9 ± 3.3	13.6 ± 5.7	15.9 ± 16.5
AST (IU/l)	153.3 ± 130.2	186.8 ± 165.1	292.8 ± 392.2	136 ± 169.6	174.2 ± 186.4
ALT (IU/l)	135.2 ± 71.7	134.5 ± 107.4	328.1 ± 465.4	120.5 ± 159.8	152.1 ± 139.2
ALP (IU/l)	768.1 ± 573	948.5 ± 743	868 ± 514.5	563.5 ± 195.6	608.3 ± 544.7
Total bilirubin (mg/ml)	4.7 ± 7.2	4.4 ± 6.5	3.9 ± 6.5	1.1 ± 0.6	2.3 ± 2
Red blood cell count (10 ¹² /l)	4.4 ± 0.9	4 ± 0.3	4.6 ± 0.5	3.9 ± 0.6	4.1 ± 0.4
White blood cell count (10 ⁹ /l)	8.5 ± 3.8	9.3 ± 3.8	21.7 ± 7.5	16.5 ± 11.4	12.6 ± 6.7
Platelet count (10 ⁹ /l)	269.8 ± 120.4	320.5 ± 76.2	379.8 ± 146	303.8 ± 286.8	266.1 ± 168.6
Hemoglobin (g/dl)	10.9 ± 1	10 ± 1.6	11.9 ± 1.7	9.6 ± 2.9	10.7 ± 1.8
Mean cell volume (fl)	78.7 ± 8.6	79.3 ± 5.1	79.5 ± 5.9	79.9 ± 1.9	80.8 ± 5.7

^aNo fibrosis, portal expansion with no septum, rare septum formation, numerous septum formation, cirrhosis

non-invasive parameters along with their sensitivity and specificity for detecting different fibrosis stages.

5. Discussion

In the present study, we assessed the applicability of common non-invasive markers of liver fibrosis in predicting hepatic fibrotic stages in children with chronic hepatitis of different etiologies. APRI, AAR, and FIB-4 showed some extent of predictive capacity for the diagnosis of fibrosis in these patients. APRI and AAR showed the highest AUC values for detecting minimal and advanced fibrosis, respectively. However, individual analysis showed that the FIB-4 index might be a more appropriate parameter for detecting advanced fibrosis. Identifying reliable non-invasive markers for liver fibrosis is of critical importance

in the management of various hepatic disorders. Non-invasive tests of livers fibrosis have been noted as appropriate alternatives for liver biopsy procedure (4, 11-13).

The validity of APRI has been established in predicting liver fibrosis of various etiologies (14, 15). In our study, APRI rendered AUCs 0.541, 0.355, and 0.540 for detecting minimal fibrosis (Stages 0, 1, and 2), advanced fibrosis (Stage 3), and cirrhosis (Stage 4), respectively. APRI also correlated with fibrosis stage (r = 0.1). In a study on patients with viral and autoimmune hepatitis, APRI correlated (r = 0.24) with fibrosis, which was in line with our results (16). In another report, however, APRI has not been associated with liver fibrosis in patients with immune hepatitis (17). In other studies, APRI has provided an AUC = 0.78 for detecting high-grade fibrosis (9).

We noticed that optimum thresholds of APRI for the di-

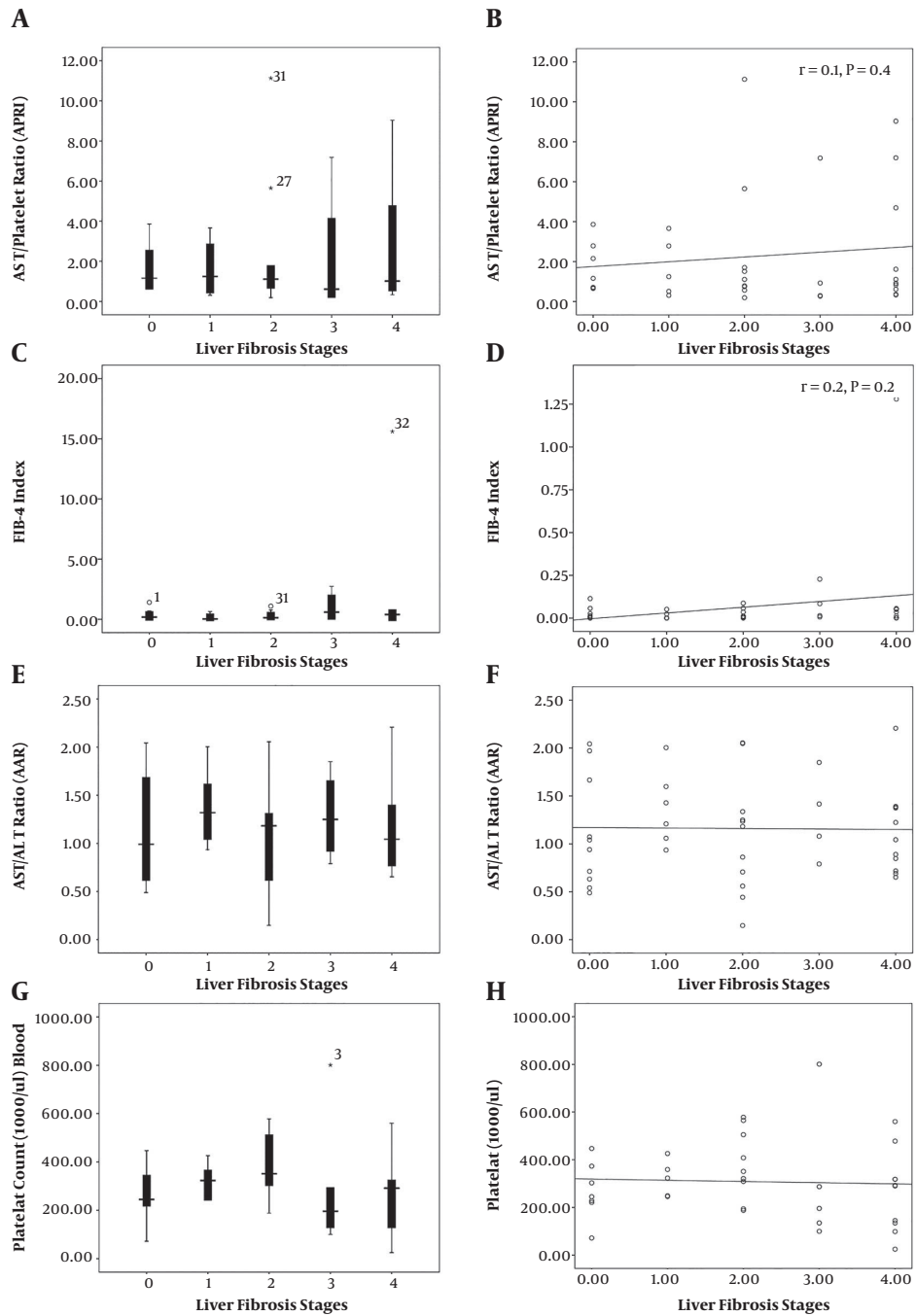


Figure 1. The mean values of APRI (A), FIB-4 (C), AAR (E), and platelet count (G), and spearman correlation coefficient of APRI (B), FIB-4 (D), AAR (F), and platelet count (H) of four non-invasive markers of liver fibrosis individual fibrotic stages.

agnosis of fibrotic stages 0, 1, 2, 3, and 4 were 0.66, 1.2, 1.37, 0.92, and 0.81, respectively. Overall, the values for detecting minimal and advanced fibrosis were 1.13 and 0.72, respectively. The highest sensitivity (70%) of APRI was reached

the cut-off = 0.81 for detecting cirrhosis (stage 4). This is while the highest specificities that were related to cut-off values 0.66 (68%) and 1.37 (68%) for detecting fibrosis stages 0 and 2, respectively. The desirable cut-off values

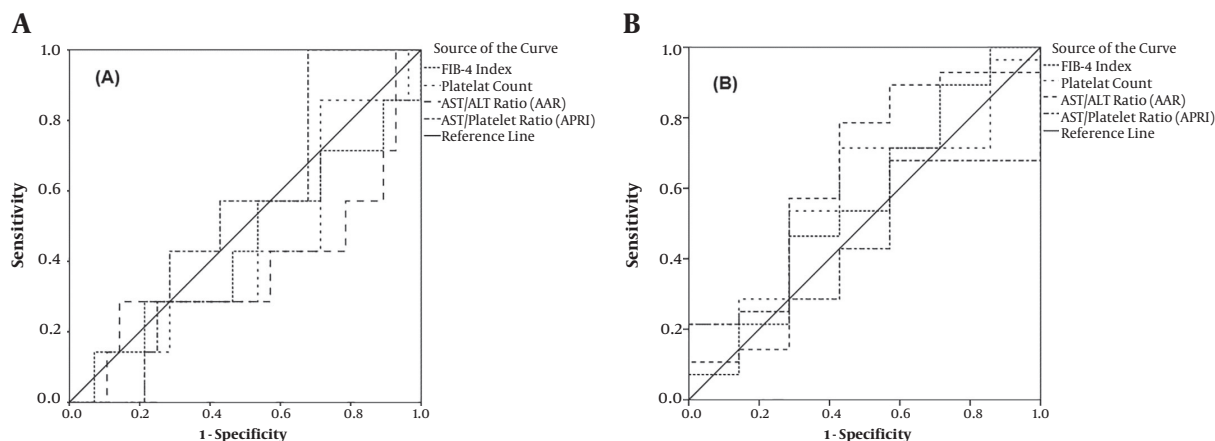


Figure 2. Receiver operating characteristic (ROC) curve analysis for the detection of minimal fibrosis (A) and advanced fibrosis and cirrhosis (B).

Table 3. Receiver Operating Characteristic Analysis Regarding the Diagnostic Efficiency of Four Non-Invasive Markers of Liver Fibrosis in Different Fibrotic Stages

Fibrotic Stages	Receiver Operating Curve Analysis		
	Area Under Curve	95% CI	P
Fibrosis stage = 0			
A PRI	0.541	0.335 - 0.747	0.7
AAR	0.378	0.112 - 0.643	0.3
FIB-4	0.485	0.237 - 0.733	0.9
Platelet count	0.408	0.186 - 0.630	0.4
Fibrosis stage = 1			
APRI	0.473	0.197 - 0.749	0.8
AAR	0.713	0.532 - 0.895	0.1
FIB-4	0.313	0.52 - 0.575	0.1
Platelet count	0.587	0.385 - 0.788	0.5
Fibrosis stage = 2			
APRI	0.517	0.292 - 0.742	0.8
AAR	0.402	0.154 - 0.650	0.3
FIB-4	0.474	0.268 - 0.681	0.8
Platelet count	0.692	0.493 - 0.892	0.08
Fibrosis stage = 3			
APRI	0.355	0.007 - 0.717	0.3
AAR	0.605	0.380 - 0.830	0.5
FIB-4	0.694	0.427 - 0.960	0.2
Platelet count	0.399	0.030 - 0.769	0.5
Fibrosis stage = 4			
APRI	0.540	0.322 - 0.758	0.7
AAR	0.508	0.307 - 0.709	0.9
FIB-4	0.592	0.384 - 0.800	0.4
Platelet count	0.390	0.173 - 0.607	0.3

of APRI for detecting fibrotic transformation in the liver could be highly variable considering the underlying etiologies of the liver fibrosis (8, 18). Although the optimum value of 0.93 has been noted in patients with hepatocellular, cholestatic liver disease, this value has been 2.35 in patients with hepatic biliary disease (19). In children with bil-

iary atresia, optimal cut-off values for APRI were obtained at 1.01 and 1.41 for advanced fibrosis and cirrhosis, respectively (20). Generally, a cut-off value of 0.7 for APRI has been suggested as an indicator for predicting significant liver fibrosis (21). On the other hand, using cut-off values of ≤ 0.5 or ≤ 0.3 for ARPI may reliably rule out any fibrotic changes (8, 22). On the other hand, a value of ≥ 1.5 has been proposed as a strong indicator of severe fibrosis (8). In general, sensitivity and specificity of APRI are comparable to some high-resolution methods such as MR elastography and transient elastography-Fibro-Scan (7, 22-26).

Here, FIB-4 showed the highest AUC (0.592) for detecting cirrhosis. In correlation analysis, FIB-4 also correlated with fibrosis stage ($r = 0.2$). At the cut-off value of 0.21, FIB-4 showed the highest sensitivity and specificity (70% and 60%) for detecting cirrhosis. In line with these, FIB-4 has been described in association with fibrosis stages in immune hepatitis (17, 23) and HBV patients (15). In patients with HBV, FIB-4 yielded an AUC range of 0.750-1 for the diagnosis of advanced liver fibrosis (24, 27). FIB-4 is a sensitive index with comparable results with other sensitive methods such as fibro scan for fibrosis diagnosis (28). Nevertheless, the clinical application of FIB-4 needs to be validated for the etiology and stages of fibrosis, especially in pediatric populations.

In our study, the highest AUC for AAR was related to fibrosis stage = 1 (AUC = 0.713, 95% CI: 0.532 - 0.895). We noticed that the highest specificity for AAR was related to the cut-off value of 0.59 (90%) for detecting no fibrosis (stage = 0). On the other hand, AAR rendered the highest sensitivity (78%) for advanced fibrosis (stages 3 and 4) at the threshold of 0.71. In previous reports, AAR significantly correlated with hepatic fibrosis in HBV patients with an AUC of 0.586 for advanced fibrosis and cirrhosis (15). A cut-off value of

Table 4. Cut-Off Values with Respective Specificities and Sensitivities for Non-Invasive Liver Fibrosis Markers

Fibrosis Stages	Receiver Operating Curve Analysis		
	Cut-Off	Specificity	Sensitivity
Fibrosis stage = 0			
APRI	0.66	68%	14%
AAR	0.59	90%	20%
FIB-4	0.15	53%	42%
Platelet count	207	31%	85%
Fibrosis stage = 1			
APRI	1.2	60%	60%
AAR	1.42	80%	60%
FIB-4	0.3	57%	40%
Platelet count	322	67%	60%
Fibrosis stage = 2			
APRI	1.37	68%	44%
AAR	1.13	50%	44%
FIB-4	0.11	39%	66%
Platelet count	319	70%	66%
Fibrosis stage = 3			
APRI	0.92	46%	50%
AAR	1.01	52%	75%
FIB-4	0.18	52%	75%
Platelet count	268	39%	50%
Fibrosis stage = 4			
APRI	0.81	44%	70%
AAR	0.87	40%	60%
FIB-4	0.21	60%	70%
Platelet count	290	46%	50%
Minimal or no fibrosis			
APRI	1.13	58%	57%
AAR	0.93	43	42%
FIB-4	0.15	47%	57%
Platelet count	298	47	42
Moderate to advanced fibrosis			
APRI	0.72	43%	68%
AAR	0.71	58%	78%
FIB-4	0.18	58%	53%
Platelet count	245	58%	71%

≥ 0.7 has been proposed for detecting advanced fibrosis with sensitivity and specificity of 87% and 39% in patients with HCV (9). In contrast, the value of ≥ 1.2 was proposed by Fouad et al. as the optimum level for the diagnosis of advanced fibrosis in HCV patients (10). One reason for these discrepancies may be the effects of some covariates such as age, obesity, metabolic disturbances, and viral load in infectious hepatitis that influence these factors (6, 25). To the best of our knowledge, this is the first report in children. One limitation of our study was the relatively low number of patients limiting the power of the study and reaching a

significant level.

5.1. Conclusion

Our study assessed the applicability of non-invasive markers of APRI, AAR, and FIB-4 for detecting liver fibrosis in a childhood population with chronic hepatic diseases. Nevertheless, APRI, FIB-4, and AAR may be useful markers in predicting fibrotic transformation in children with various etiologies of hepatitis. In particular, APRI and AAR may be more applicable in detecting minimal fibrosis, while FIB-4 was more accurate in detecting advanced fibrosis and cirrhosis.

Footnotes

Authors' Contribution: I. S.: Concept and supervision; M. K.: Concept, A. S., A. D., M. B., and M. J.: Data collection, M. D.: Data analysis, A. B.: Drafting the manuscript.

Conflict of Interests: The authors declare that they have no conflict of interest.

Ethical Approval: Our study was approved by the Research Ethics Committee of Zabol University of Medical Sciences (Ethics code: ZBMU.1.REC.1396.127).

Funding/Support: Zabol University of Medical Sciences.

Informed Consent: Informed consent was obtained from the parents. The patients' information was kept confidential.

References

1. Bataller R, Brenner DA. Liver fibrosis. *Journal of clinical investigation*. 2005;115(2):209.
2. Hernandez-Gea V, Friedman SL. Pathogenesis of liver fibrosis. *Annual review of pathology: mechanisms of disease*. 2011;6:425-56.
3. Sebastiani G, Vario A, Guido M, Alberti A. Sequential algorithms combining non-invasive markers and biopsy for the assessment of liver fibrosis in chronic hepatitis B. *World Journal of Gastroenterology*. 2007;13(4):525-31.
4. Alisi A, de Vito R, Monti L, Nobili V. Liver fibrosis in paediatric liver diseases. *Best Practice & Research in Clinical Gastroenterology*. 2011;25(2):259-68. doi: 10.1016/j.bpg.2011.02.008.
5. Wong VS, Hughes V, Trull A, Wight DGD, Petrik J, Alexander GJM. Serum hyaluronic acid is a useful marker of liver fibrosis in chronic hepatitis C virus infection. *Journal of viral hepatitis*. 1998;5(3):187-92.
6. Hagan M, Asrani SK, Talwalkar J. Non-invasive assessment of liver fibrosis and prognosis. *Expert Review of Gastroenterology & Hepatology*. 2015;9(10):1251-60. doi: 10.1586/17474124.2015.1075391.
7. Huwart L, Sempoux C, Salameh N, Jamart J, Annet L, Sinkus R, et al. Liver fibrosis: Noninvasive assessment with MR elastography versus aspartate aminotransferase-to-platelet ratio index. *Radiology*. 2007;245(2):458-66. doi: 10.1148/radiol.2452061673.
8. Loaeza-del-Castillo A, Paz-Pineda F, Oviedo-Cardenas E, Sanchez-Avila F, Vorackova FV. AST to platelet ratio index (APRI) for the noninvasive evaluation of liver fibrosis. *Annals of Hepatology*. 2008;7(4):350-7.

9. Abdollahi M, Pouri A, Ghojzadeh M, Estakhri R, Somi M. Non-invasive serum fibrosis markers: A study in chronic hepatitis. *Bioimpacts*. 2015;5(1):17-23.
10. Fouad SA, Esmat S, Omran D, Rashid L, Kobaisi MH. Noninvasive assessment of hepatic fibrosis in Egyptian patients with chronic hepatitis C virus infection. *World journal of gastroenterology: WJG*. 2012;18(23):2988.
11. Cales P, Veillon P, Konate A, Mathieu E, Ternisien C, Chevailler A, et al. Reproducibility of blood tests of liver fibrosis in clinical practice. *Clinical Biochemistry*. 2008;41(1-2):10-8. doi: [10.1016/j.clinbiochem.2017.11.119](https://doi.org/10.1016/j.clinbiochem.2017.11.119).
12. Nunes D, Fleming C, Offner G, Craven D, Fix O, Heeren T, et al. Noninvasive Markers of Liver Fibrosis Are Highly Predictive of Liver-Related Death in a Cohort of HCV-Infected Individuals With and Without HIV Infection. *American Journal of Gastroenterology*. 2010;105(6):1346-53. doi: [10.1038/ajg.2009.746](https://doi.org/10.1038/ajg.2009.746).
13. Unalp-Arida A, Ruhl CE. Liver Fibrosis Scores Predict Liver Disease Mortality in the United States Population. *Hepatology*. 2017;66(1):84-95. doi: [10.1002/hep.29113](https://doi.org/10.1002/hep.29113).
14. Cales P, Oberti F, Michalak S, Hubert-Fouchard I, Rousset MC, Konat A, et al. A novel panel of blood markers to assess the degree of liver fibrosis. *Hepatology*. 2005;42(6):1373-81. doi: [10.1002/hep.20935](https://doi.org/10.1002/hep.20935).
15. Huang R, Wang GY, Tian C, Liu Y, Jia B, Wang J, et al. Gamma-glutamyl-transpeptidase to platelet ratio is not superior to APRI, FIB-4 and RPR for diagnosing liver fibrosis in CHB patients in China. *Scientific Reports*. 2017;7. doi: [10.1038/s41598-017-09234-w](https://doi.org/10.1038/s41598-017-09234-w).
16. Halasz T, Horvath G, Kiss A, Par G, Szombati A, Gellay F, et al. Evaluation of Histological and non-Invasive Methods for the Detection of Liver Fibrosis: The Values of Histological and Digital Morphometric Analysis, Liver Stiffness Measurement and APRI Score. *Pathology & Oncology Research*. 2016;22(1):1-6. doi: [10.1007/s12253-015-9964-1](https://doi.org/10.1007/s12253-015-9964-1).
17. Anastasiou OE, Buchter M, Baba HA, Korth J, Canbay A, Gerken G, et al. Performance and Utility of Transient Elastography and Non-Invasive Markers of Liver Fibrosis in Patients with Autoimmune Hepatitis: A Single Centre Experience. *Hepatitis Monthly*. 2016;16(11). doi: [10.5812/hepatmon.40737](https://doi.org/10.5812/hepatmon.40737).
18. Nguyen-Khac E, Chatelain D, Tramier B, Decrombecque C, Robert B, Joly JP, et al. Assessment of asymptomatic liver fibrosis in alcoholic patients using fibroscan: prospective comparison with seven non-invasive laboratory tests. *Alimentary Pharmacology & Therapeutics*. 2008;28(10):1188-98. doi: [10.1111/j.1365-2036.2008.03831.x](https://doi.org/10.1111/j.1365-2036.2008.03831.x).
19. Unlusoy-Aksu A, Sari S, Yilmaz G, Egritas-Gurkan O, Demirtas Z, Dalgic B. Aspartate aminotransferase-to-platelet ratio index in children with cholestatic liver diseases to assess liver fibrosis. *Turkish Journal of Pediatrics*. 2015;57(5):492-7.
20. Kim SY, Seok JY, Han SJ, Koh H. Assessment of Liver Fibrosis and Cirrhosis by Aspartate Aminotransferase-to-Platelet Ratio Index in Children With Biliary Atresia. *Journal of Pediatric Gastroenterology and Nutrition*. 2010;51(2):198-202. doi: [10.1097/MPG.0b013e3181da1d98](https://doi.org/10.1097/MPG.0b013e3181da1d98).
21. Rosinska M, Parda N, Kolakowska A, Godzik P, Zakrzewska K, Madalinski K, et al. Factors associated with hepatitis C prevalence differ by the stage of liver fibrosis: A cross-sectional study in the general population in Poland, 2012-2016. *Plos One*. 2017;12(9). doi: [10.1371/journal.pone.0185055](https://doi.org/10.1371/journal.pone.0185055).
22. Wong S, Huynh D, Zhang F, Nguyen NQ. Use of aspartate aminotransferase to platelet ratio to reduce the need for FibroScan in the evaluation of liver fibrosis. *World Journal of Hepatology*. 2017;9(17):791-6. doi: [10.4254/wjh.v9.i17.791](https://doi.org/10.4254/wjh.v9.i17.791).
23. Sheptulina A, Shirokova E, Nekrasova T, Blum H, Ivashkin V. Platelet count to spleen diameter ratio non-invasively identifies severe fibrosis and cirrhosis in patients with autoimmune hepatitis. *Journal of Gastroenterology and Hepatology*. 2016;31(12):1956-62. doi: [10.1111/jgh.13407](https://doi.org/10.1111/jgh.13407).
24. Ragazzo TG, Paranagua-Vezozzo D, Lima FR, Mazo DFD, Pessoa MG, Oliveira CP, et al. Accuracy of transient elastography-FibroScan (R), acoustic radiation force impulse (ARFI) imaging, the enhanced liver fibrosis (ELF) test, APRI, and the FIB-4 index compared with liver biopsy in patients with chronic hepatitis C. *Clinics*. 2017;72(9):516-25. doi: [10.6061/clinics/2017\(09\)01](https://doi.org/10.6061/clinics/2017(09)01).
25. Taneja S, Tohra S, Duseja A, Dhiman RK, Chawla YK. Noninvasive Assessment of Liver Fibrosis By Transient Elastography and FIB4/APRI for Prediction of Treatment Response in Chronic Hepatitis C-An Experience from a Tertiary Care Hospital. *Journal of Clinical and Experimental Hepatology*. 2016;6(4):282-90. doi: [10.1016/j.jceh.2016.08.001](https://doi.org/10.1016/j.jceh.2016.08.001).
26. Xu QY, Sheng L, Bao H, Chen XY, Guo CJ, Li H, et al. Evaluation of transient elastography in assessing liver fibrosis in patients with autoimmune hepatitis. *Journal of Gastroenterology and Hepatology*. 2017;32(3):639-44. doi: [10.1111/jgh.13508](https://doi.org/10.1111/jgh.13508).
27. Deng YQ, Zhao H, Zhou JY, Yan LL, Wang GQ, China Hep BFA. Angiopoietin-like protein as a novel marker for liver fibrosis in chronic hepatitis B patients with normal to minimally raised ALT. *Bmc Infectious Diseases*. 2017;17. doi: [10.1186/s12879-017-2728-7](https://doi.org/10.1186/s12879-017-2728-7).
28. Petta S, Wong VWS, Camma C, Hiriart JB, Wong GLH, Vergniol J, et al. Serial combination of non-invasive tools improves the diagnostic accuracy of severe liver fibrosis in patients with NAFLD. *Alimentary Pharmacology & Therapeutics*. 2017;46(6):617-27. doi: [10.1111/apt.14219](https://doi.org/10.1111/apt.14219).