

# Red blood cell distribution width: a determinant of hospital mortality in pancreatitis



Payman Moharamzadeh<sup>1</sup>, Kavous Shahsavari Nia<sup>2</sup>, Mohammadhossein Somi<sup>1</sup>, Mahboub Pouraghaei<sup>1</sup>, Akbar Fadaeihaghi<sup>3</sup>, Farzad Rahmani<sup>2\*</sup>

<sup>1</sup>Gastrointestinal and Liver Disease Research Center, Tabriz University of Medical Sciences, Tabriz, Iran

<sup>2</sup>Road Traffic Injury Research Center, Tabriz University of Medical Sciences, Tabriz, Iran

<sup>3</sup>Student's Research Committee, Tabriz University of Medical Sciences, Tabriz, Iran

**Received:** 21 July 2017

**Accepted:** 18 September 2017

**Published online:** 28 September 2017

**\*Corresponding author:** Farzad Rahmani, Emergency Medicine Department, Sina Medical Research and Training Hospital, Tabriz University of Medical Sciences, Tabriz, Iran. Tel: 00984135498144; Fax: 00984135412151; Email: Rahmanif@tbzmed.ac.ir

**Competing interests:** None.

**Funding information:** None.

**Citation:** Moharamzadeh P, Shahsavari Nia K, Somi MH, Pouraghaei M, Fadaeihaghi A, Rahmani F. Red blood cell distribution width: a determinant of hospital mortality in pancreatitis. *Journal of Emergency Practice and Trauma* 2018; 4(1): 34-38. doi: 10.15171/jept.2017.26.

## Abstract

**Objective:** In recent years, there has been a great attention concerning red blood cell distribution width (RDW) in clinical decisions as well as determining the severity of diseases. This study was conducted to evaluate the primary level of RDW to predict hospital mortality in pancreatitis.

**Methods:** This was a descriptive analytical study performed on 100 patients with acute pancreatitis in the emergency department of Imam Reza hospital of Tabriz University of Medical Sciences. In this study, the primary level of RDW in patients with acute pancreatitis presenting to the emergency ward was collected and after patients' admission we followed them. Also, the admission outcome (mortality or discharge) of patients was registered, and finally we evaluated the predictive value of RDW in determining the patient's outcome in hospital.

**Results:** In our study, 47 patients were male, and 53 patients were female. Mean RDW in patients was  $13.82 \pm 1.69$ . Five patients died during the study. Mean RDW in dead patients and other patients was  $16.44 \pm 4.22$  and  $13.68 \pm 1.37$ , respectively ( $P < 0.001$ ). The cut-off point of 14.55 for RDW with 80% sensitivity and 85% specificity was determined for predicting mortality in patients.

**Conclusion:** Based on our study results, the initial RDW level is an independent factor for predicting in-hospital mortality in pancreatitis but not for determining the need for surgery or admission to the intensive care unit (ICU).

**Keywords:** Pancreatitis, Mortality, Prognosis

## Introduction

The clinical symptoms of the inflammatory disease of the pancreas, also called acute pancreatitis, may be only a mild abdominal pain or a severe disease is accompanied with lower blood pressure, metabolic disorders, sepsis, third spacing, organ failures, and shock (1). This is one of the most frequent surgical emergencies. It is a mild to severe, self-limiting, and sometimes fatal disorder. The mortality rate of acute pancreatitis is variable and has a range from 3.8% to 40% (2). Early diagnosis of pancreatitis and immediate initiation of treatments to decrease the mortality rate is critical (3).

In recent years, there has been much attention concerning red blood cell distribution width (RDW) in clinical decisions as well as determining the severity of diseases (4,5). The normal reference value of RDW is  $12.8\% \pm 1.2\%$  if reported in CV and  $42.5 \pm 3.5$  if reported in SD. The quantitative variation in the size of circulating red

blood cells (RBCs) is RDW. High values of RDW show a high variation in the size of circulating RBCs and may indicate various pathological conditions. Lower values of RDW statistically show higher uniformity of size in RBCs, although they are not clinically significant (5-8). In well-established diseases, such as iron deficiency anemia, where the cells have uniformly been microcytic, RDW may reach the normal range. If, however, the treatment with iron begins, and the body responds to the treatment, RDW increases production of new normocytic cells until the treatment is completed, and normal hematopoiesis begins, where RDW returns to its normal range. RDW increases in other hematopoietic diseases, such as megaloblastic anemia, but it is normal in thalassemia (5,6).

## Objectives

As an easy and cost-effective method, the measurement of RDW is routinely used as a part of complete blood



count (CBC) test to assess patients. Recent studies have shown the significant value of RDW in the prediction of the mortality rate in patients admitted to the intensive care unit (ICU), patients with cardiovascular diseases, and community-acquired pneumonia. This study was conducted to evaluate the primary level of RDW which was checked in the emergency ward for predicting the hospital mortality in pancreatitis.

## Methods

This descriptive-analytical study was performed on 100 patients with acute pancreatitis in the emergency department of Imam Reza medical research and training hospital, Tabriz, East Azerbaijan, Iran. This hospital had an annual admission of 110 000 patients from January 2014 to December 2014. The inclusion criteria included all patients admitted to the emergency ward with acute pancreatitis. We excluded patients with a positive history of anemia (iron, folate, or B12 deficiency), patients with hemolytic anemia, patients with liver disease, and patients who did not consent to participate in the study (Figure 1). We used the sensitivity (48%) and specificity (96%) of RDW in prediction of mortality that was reported in Senol and colleagues' study (4). In order to determine the sample size, with consideration the 1% prevalence of pancreatitis, 80% power, and 95% CI, we used Dr. Lin Naing software (9). Sampling strategy was convenient method to reach final sample size.

All patients who went to the emergency ward and met the inclusion criteria were examined in this study. Upon admission, demographic specifications (including sex, age, symptoms, and signs) of the patients who complained of acute abdominal pain and were highly suspicious of having pancreatitis (symptoms such as nausea, vomiting, and epigastric tenderness) were recorded. Then, blood samples were delivered to the laboratory to measure their serum amylase and RDW. The serum amylase was measured using a photometer (Biotechnica BT- 3000, Italy), and RDW was measured using micromachining technology (Automated Hematology Analyzer, Japan). The normal level of serum amylase and its unit of measurement were respectively up to 100 and IU/L; the normal level of RDW and its unit of measurement were respectively 13.2 and percent. For confirming the diagnosis, we performed CT scan of the abdomen and pelvis with oral and intravenous contrast (Siemens SOMATOM Emotion 6, Germany) for all patients. All CT scans were reported by a radiologist, a faculty member of that university. All patients with acute pancreatitis were admitted to the ward, and the outcomes such as mortality, the incidence of complications, and the need for surgery were assessed. Also, we calculated Acute Physiology and Chronic Health Evaluation (APACHE) II score.

The obtained data were entered into SPSS 17.0 (SPSS Inc, Chicago). To describe the data, we used descriptive

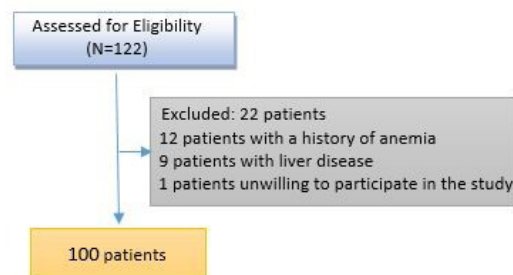


Figure 1. Study flowchart.

statistical analysis (frequency, percentage, mean  $\pm$  SD). To compare quantitative data, we used *t* test and the ROC (receiver operating characteristic curve) was used to measure area under curve (AUC), sensitivity, specificity, positive predicting value (PPV), negative predicting value (NPV), Youden index (J), and cut-off point of RDW and APACHE II score for determining the need for surgery, admission to ICU, admission complication, and mortality. In all cases, the *P* value  $<0.05$  was considered significant.

## Results

We evaluated 100 patients with acute pancreatitis in this study. Of the patients, 47 were male, and 53 were female. The mean  $\pm$  SD of the age of all patients was  $56.31 \pm 16.80$  years. About 26 patients had experienced gallstones. Mean duration of nil per os (NPO) in patients was  $3.6 \pm 1.4$  days. The mean  $\pm$  SD of the duration of hospitalization was  $6.47 \pm 2.48$  days. During the hospitalization, 14 patients needed to be admitted to ICU, 5 patients died (due to surgery complications, sepsis, and acute tubular necrosis), 5 patients needed surgery (due to necrotizing pancreatitis or gallbladder stones), and 10 patients had admission complications (intubation, sepsis, and mortality). Table 1 shows vital signs and paraclinical findings of the patients. Table 2 shows mean ( $\pm$ SD) of RDW and APACHE II score of patients based on admission to ICU, surgery need, admission complication, and mortality and comparison of them between groups. As shown in Table 2, there was a significant statistical difference between RDW and APACHE II score in patients who had admission complication and in-hospital mortality.

For predicting the admission complication in patients, we used the ROC curve to determine the value of RDW and APACHE II score. Figure 2A shows the predicting value of RDW for admission to the ICU, as the AUC was 0.81 for RDW and 0.78 for APACHE II score. The cut-off point of 13.95 for RDW (80% sensitivity, 71% specificity, 0.51 Youden index, 0.73 PPV, 0.78 NPV, 2.75 LR+, and 3.55 LR-) and 8.5 for APACHE II score (90% sensitivity, 67% specificity, 0.57 Youden index, 0.74 PPV, 0.87 NPV, 2.72 LR+, and 6.7 LR-) was determined for predicting admission complications in patients. Figure 2B shows the predictive value of RDW and APACHE II score for

**Table 1.** Vital signs and paraclinical findings of the patients

Variables	Minimum	Maximum	Mean $\pm$ SD
Systolic blood pressure (mm Hg)	90	185	125.94 $\pm$ 16.57
Diastolic blood pressure (mm Hg)	60	100	76.31 $\pm$ 9.92
Heart rate, bpm	60	115	82.66 $\pm$ 9.32
Respiratory rate (per minute)	12	24	16.48 $\pm$ 1.77
RDW (%)	11.20	23.80	13.82 $\pm$ 1.69
APACHE II score	1	25	7.94 $\pm$ 3.69
BUN (mmol/L)	6.00	109.00	19.04 $\pm$ 12.94
Cr (mg/dL)	0.50	13.50	1.2030 $\pm$ 1.30
BS (mg/dL)	76.00	1299.00	156.27 $\pm$ 135.79
Amylase (IU/L)	57.00	6500.00	1417.28 $\pm$ 1357.41
ALT (IU/L)	8.00	1110.00	112.22 $\pm$ 151.88
AST (IU/L)	12.00	1211.00	89.65 $\pm$ 143.00
ALP (IU/L)	83.00	1586.00	351.33 $\pm$ 280.38
LDH (IU/L)	201.00	2553.00	509.63 $\pm$ 288.08
Ca <sup>++</sup> (meq/L)	0.10	10.80	8.68 $\pm$ 1.13
Total Bilirubin (mg/L)	0.20	24.00	2.52 $\pm$ 3.22
HCO <sub>3</sub> (mmol/L)	9.00	32.10	19.52 $\pm$ 5.16
PaCO <sub>2</sub> (mm Hg)	18.40	58.00	33.61 $\pm$ 9.13
pH	7.16	7.54	7.36 $\pm$ 0.08

**Table 2.** Mean ( $\pm$ SD) of RDW and APACHE II score of patients

Variables	Frequency	RDW (P value)	APACHE II score (P value)
Admission to ICU			
Yes	14	14.33 $\pm$ 1.26	9.28 $\pm$ 3.91
No	86	13.74 $\pm$ 1.75 (0.230)	7.72 $\pm$ 3.63 (0.142)
Need for surgery			
Yes	5	13.78 $\pm$ 9.33	8.80 $\pm$ 1.79
No	95	13.82 $\pm$ 1.73 (0.954)	7.89 $\pm$ 3.76 (0.596)
Admission complication			
Yes	10	15.61 $\pm$ 3.13	11.00 $\pm$ 2.94
No	90	13.62 $\pm$ 1.34 (<0.001)	7.60 $\pm$ 3.62 (0.005)
Mortality			
Yes	5	16.44 $\pm$ 4.22	15.20 $\pm$ 6.38
No	95	13.68 $\pm$ 1.37 (<0.001)	7.56 $\pm$ 3.11 (<0.001)

Abbreviations: ICU: intensive care unit, RDW: red cell distribution width, APACHE II: Acute Physiology and Chronic Health Evaluation.

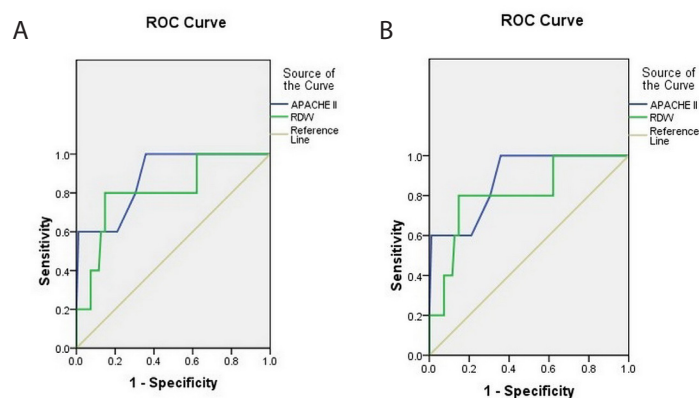
mortality in patients with acute pancreatitis, as the AUC was 0.81 for RDW and 0.88 for APACHE II score. The cut-off point of 14.55 for RDW (80% sensitivity, 85% specificity, 0.65 Youden index, 0.84 PPV, 0.81 NPV, 5.33 LR+, and 4.25 LR-) and 9.5 for APACHE II score (80% sensitivity, 69% specificity, 0.49 Youden index, 0.72 PPV, 0.77 NPV, 2.58 LR+, and 3.45 LR-) was determined for predicting mortality in patients.

### Discussion

Various scores were used to determine mortality or incidence of complications in patients with pancreatitis, including APACHE II score, Ranson criteria, and level of serum C-reactive protein (CRP). These scores, except CRP, are obtained through collecting various data in a time-consuming process and need complicated calculations (10-13). The level of RDW has been recently introduced for prediction of mortality rate in patients with

pancreatitis (5,14,15).

Acute pancreatitis is mostly self-limiting, is accompanied with/out complications, and has a mortality rate lower than 2%. However, almost 20% of attacks progress to acute and severe pancreatitis. The overall mortality rate of pancreatitis was 4%-7% (10). In acute pancreatitis patients, the mortality is associated with multi-organ dysfunction syndrome (MODS) and septic complications. Over the recent years, the main cause of mortality is MODS. The mortality in these patients occurs in 2 stages: the first week when systemic inflammatory response syndrome (SIRS) and MODS occur, and the late stage after 1-3 weeks following the MODS accompanied with infections (5,16). There are many studies on the relationship of mortality or complications in different patients with heart diseases, cancer, stroke, peripheral vascular, renal disease, infection, respiratory, and acute diseases as well as normal patients and normal populations with the primary level of RDW



**Figure 2.** ROC for patients' RDW and APACHE II score based on predicting (A) admission complications and (B) mortality in patients .

(17-19). Most of these studies conducting survival analysis introduced RDW as a determinant variable of mortality in patients. Moreover, RDW has been introduced as a predictor of complications, such as heart failure in myocardial infarction, although studies could not predict the severity of cancer or stroke with RDW (20-24), but RDW strongly predicts the mortality in patients with known stroke (25). In their study, Senol et al concluded that the level of RDW upon the admission of patients with acute pancreatitis was a useful factor for determining the mortality rate in these patients (4). Zorlu et al examined the level of RDW and stated that RDW was a predictive factor in patients with cardiopulmonary disorders, including coronary heart disease, acute myocardial infarction (AMI), acute and chronic heart failure, and pulmonary hypertension, and the high level of RDW increased the mortality rate in these patients (6). Jo et al concluded that the primary level of RDW significantly correlated with the mortality rate in patients with severe sepsis and septic shock patients and was significantly higher in dead patients (7). Wang et al conducted a study on mortality rate in patients admitted to the ICU and found that the high level of RDW was more correlated with mortality (8). Our study results show that the cut-off point of RDW could not be determined in predicting the need for surgery and the need for admission to the ICU, while, the cut-off point of 14.55 for RDW with 80% sensitivity and 85% specificity was determined for predicting mortality and the cut-off point of 13.95 for RDW with 80% sensitivity and 71% specificity was determined for predicting admission complications. In this study, significant results were obtained only in determining the mortality and admission complications of patients on the basis of the initial level of RDW, while, RDW did not predict other outcomes. In our study, only 5 patients died. Also, our results revealed that the level of RDW in patients who were admitted to the ICU due to the severe symptoms or died due to the exacerbation of the disease was higher than that in other patients. This study was the second one, after Senol and colleagues' study (4), which showed the value of the primary level of RDW in determining mortality in

patients with acute pancreatitis.

One of the limitations was the impossibility of investigating all the cases presenting to the emergency ward when collecting samples. Moreover, there was no control group due to the descriptive design of the study.

This study showed that the initial RDW level is an independent factor for predicting in-hospital mortality in pancreatitis but not for determining the need for surgery or admission to the ICU. However, further studies should be performed on a larger sample size and in other medical centers.

#### Ethical issues

Ethics Committee of Tabriz University of Medical Sciences approved this study (No. 8984). We obtained an ethical consent from all participating patients once they were briefed about all the conditions. During the study, the privacy of patients was quite considered.

#### Authors' contributions

PM and KSN carried out the design and coordinated the study, participated in most of the experiments and prepared the manuscript. MHS and MP provided assistance for all experiments. AFH and FR provided assistance in the design of the study, coordinated and carried out all the experiments and participated in manuscript preparation. All authors read and approved the content of the manuscript.

#### Acknowledgments

Researchers would like to thank the assistance of Deputy for Research and Technology, Tabriz University of Medical Sciences for supporting this project. The authors are grateful to all the health personnel and patients who participated in the study, in addition to the data collectors, supervisors and administrative staff of the emergency department of Imam Reza Hospital. This article was written based on dataset of Akbar Fadaei Haghi's specialty thesis. We would also like to express our sincere appreciation to Mr. Mehdi Talebi for his contribution to do this project.

## References

1. Fisher WE, Anderson DK, Bell RH, Saluja AK, Brunicaudi FC. Pancreas. In: Brunicaudi FC, Anderson DK, Billiar TR, eds. *Schwartzs Principles of Surgery*. 8th ed. New York: McGraw-Hill; 2005. p. 1231-40.
2. Wang X, Cui Z, Zhang J, Li H, Zhang D, Miao B, et al. Early predictive factors of in hospital mortality in patients with severe acute pancreatitis. *Pancreas* 2010; 39(1): 114-5. doi: 10.1097/MPA.0b013e3181b65dd5.
3. Yoldas O, Koc M, Karakose N, Kilic M, Tez M. Prediction of clinical outcomes using artificial neural networks for patients with acute biliary pancreatitis. *Pancreas* 2008; 36(1): 90-2. doi: 10.1097/MPA.0b013e31812e964b.
4. Senol K, Saylam B, Kocaay F, Tez M. Red cell distribution width as a predictor of mortality in acute pancreatitis. *Am J Emerg Med* 2013; 31(4): 687-9. doi: 10.1016/j.ajem.2012.12.015.
5. Song CS, Park DI, Yoon MY, Seok HS, Park JH, Kim HJ, et al. Association between red cell distribution width and disease activity in patients with inflammatory bowel disease. *Dig Dis Sci* 2012; 57(4): 1033-8. doi: 10.1007/s10620-011-1978-2.
6. Zorlu A, Bektasoglu G, Guven FM, Dogan OT, Gucuk E, Ege MR, et al. Usefulness of admission red cell distribution width as a predictor of early mortality in patients with acute pulmonary embolism. *Am J Cardiol* 2012; 109(1): 128-34. doi: 10.1016/j.amjcard.2011.08.015.
7. Jo YH, Kim K, Lee JH, Kang C, Kim T, Park HM, et al. Red cell distribution width is a prognostic factor in severe sepsis and septic shock. *Am J Emerg Med* 2013; 31(3): 545-8. doi: 10.1016/j.ajem.2012.10.017.
8. Wang F, Pan W, Pan S, Ge J, Wang S, Chen M. Red cell distribution width as a novel predictor of mortality in ICU patients. *Ann Med* 2011; 43(1): 40-6. doi: 10.3109/07853890.2010.521766.
9. Naing L. Sample size for sensitivity and specificity studies. Available from: [http://www.kck.usm.my/ppsg/statistical\\_resources/sample\\_size\\_for\\_sensitivity\\_specificity\\_studies/LinNaing.xls](http://www.kck.usm.my/ppsg/statistical_resources/sample_size_for_sensitivity_specificity_studies/LinNaing.xls).
10. Hemphill RR, Santen SA. Disorders of the Pancreas In: Marx JA, ed. *Rosen's Emergency Medicine*. Philadelphia: Elsevier Saunders; 2014. p. 1205-15.
11. Safari S, Rahmani F, Soleimanpour H, Ebrahimi Bakhtavar H, Mehdizadeh Efsanjani R. Can APACHE II score predict diabetic ketoacidosis in hyperglycemic patients presenting to emergency department? *Anesth Pain Med* 2014; 4(4): e21365. doi: 10.5812/aapm.21365.
12. Wu BU, Bakker OJ, Papachristou GI, Besselink MG, Repas K, van Santvoort HC, et al. Blood urea nitrogen in the early assessment of acute pancreatitis: an international validation study. *Arch Intern Med* 2011; 171(7): 669-76. doi: 10.1001/archinternmed.2011.126.
13. Anderson JL, Ronnow BS, Horne BD, Carlquist JF, May HT, Bair TL, et al. Usefulness of a complete blood count-derived risk score to predict incident mortality in patients with suspected cardiovascular disease. *Am J Cardiol* 2007; 99(2): 169-74. doi: 10.1016/j.amjcard.2006.08.015.
14. Yao J, Lv G. Association between red cell distribution width and acute pancreatitis: a cross-sectional study. *BMJ Open* 2014; 4(8): e004721. doi: 10.1136/bmjopen-2013-004721.
15. Kolber W, Sporek M, Dumnicka P, Kusnierz-Cabala B, Kuzniewski M, Gurda-Duda A, et al. Acute pancreatitis and red cell distribution width (RDW)I at early phase of disease. *Przegl Lek* 2013; 70(11): 916-9. [In Polish].
16. Carnovale A, Rabitti PG, Manes G, Esposito P, Pacelli L, Uomo G. Mortality in acute pancreatitis: is it an early or a late event? *Jop* 2005; 6(5): 438-44.
17. Makhoul BF, Hourieh A, Kaplan M, Bahouth F, Aronson D, Azzam ZS. Relation between changes in red cell distribution width and clinical outcomes in acute decompensated heart failure. *Int J Cardiol* 2013; 167(4): 1412-6. doi: 10.1016/j.ijcard.2012.04.065.
18. Hong N, Oh J, Kang SM, Kim SY, Won H, Youn JC, et al. Red blood cell distribution width predicts early mortality in patients with acute dyspnea. *Clin Chim Acta* 2012; 413(11-12): 992-7. doi: 10.1016/j.cca.2012.02.024.
19. Braun E, Domany E, Kenig Y, Mazor Y, Makhoul BF, Azzam ZS. Elevated red cell distribution width predicts poor outcome in young patients with community acquired pneumonia. *Crit Care* 2011; 15(4): R194. doi: 10.1186/cc10355.
20. Horne BD. A changing focus on the red cell distribution width: why does it predict mortality and other adverse medical outcomes? *Cardiology* 2012; 122(4): 213-5. doi: 10.1159/000341244.
21. Kurt M, Tanboga IH, Buyukkaya E, Karakas MF, Akcay AB, Sen N. Relation of red cell distribution width with CHA2DS2-VASc score in patients with nonvalvular atrial fibrillation. *Clin Appl Thromb Hemost* 2014; 20(7): 687-92. doi: 10.1177/1076029613478157.
22. Felker GM, Allen LA, Pocock SJ, Shaw LK, McMurray JJ, Pfeffer MA, et al. Red cell distribution width as a novel prognostic marker in heart failure: data from the CHARM Program and the Duke Databank. *J Am Coll Cardiol* 2007; 50(1): 40-7. doi: 10.1016/j.jacc.2007.02.067.
23. Tonelli M, Sacks F, Arnold M, Moye L, Davis B, Pfeffer M. Relation between red blood cell distribution width and cardiovascular event rate in people with coronary disease. *Circulation* 2008; 117(2): 163-8. doi: 10.1161/circulationaha.107.727545.
24. Spell DW, Jones DV Jr, Harper WF, David Bessman J. The value of a complete blood count in predicting cancer of the colon. *Cancer Detect Prev* 2004; 28(1): 37-42. doi: 10.1016/j.cdp.2003.10.002.
25. Ani C, Ovbiagele B. Elevated red blood cell distribution width predicts mortality in persons with known stroke. *J Neurol Sci* 2009; 277(1-2): 103-8. doi: 10.1016/j.jns.2008.10.024.