

Biological investigation of *Lilium ledebourii* in Iran

Received: 01.07.2020 / Accepted: 22.08.2020

Salman Maleki Choreh: MSc Student of Cellular and Developmental Biology, Department of Plant Biology, Faculty of Biological Sciences, Tarbiat Modares University, Tehran, Iran

Fatemeh Zarinkamar✉: Associate Prof., Department of Plant Biology, Faculty of Biological Sciences, Tarbiat Modares University, Tehran, Iran (zarinkamar@modares.ac.ir)

Mehrdad Nazari: PhD in Plant Physiology, Department of Plant Biology, Faculty of Biological Sciences, Tarbiat Modares University, Tehran, Iran

Abstract

Lilium ledebourii is a rare Asian species and is an endemic plant of Iran which grows in Gilan province in Damash highlands. In this study, the structural features of flower including the study of sections such as carpel, stamen, and tepals were performed. This plant had a full flower that consisted of six tepals (three petals and three petal-like sepals), six free stamens and a 3-lobed gynoecium. In the cross-section of tepals, the stomata as well as cells containing anthocyanins were observed. In stamens, anther (epidermis, endothecium, middle layers and an innermost tapetum), and filament were observed. In the gynoecium, ovary (ovary wall, locule, funiculus, anatropous ovule, different arrangements of vascular bundles, transmitting tissue and stomata), style (stylar canal and transmitting tissue), and dry stigma with elongated papillae tissue were observed. Besides, the presence of alkaloids in the bulb was tested using Wagner and Dragendorff reagents and the total alkaloid content in three types of methanol, ethanol, and butanol extraction was investigated. The ethanol extract had a significant difference with other extractions. The methanol extract was chosen for further investigation by gas chromatography-mass spectrometry (GC-MS) and two compounds of Pterin-6-carboxylic acid, and Pyrrolizin-1,7-dione-6-carboxylic acid, methyl (ester) were detected.

Keywords: Alkaloid, anatropous ovule, *Liliaceae*, papillae, petal-like sepal, tepal

بررسی زیست‌شناسی سوسن چلچراغ در ایران*

دریافت: ۱۳۹۹/۰۴/۱۱ / پذیرش: ۱۳۹۹/۰۶/۰۱

سلمان ملکی چره: دانشجوی کارشناسی ارشد زیست‌شناسی سلولی و تکوینی، گروه علوم گیاهی، دانشکده علوم زیستی، دانشگاه تربیت مدرس، تهران، ایران

فاطمه زرین‌کمر✉: دانشیار گروه علوم گیاهی، دانشکده علوم زیستی، دانشگاه تربیت مدرس، تهران، ایران (zarinkamar@modares.ac.ir)

مehرداد نظری: دکترای فیزیولوژی گیاهی، گروه علوم گیاهی، دانشکده علوم زیستی، دانشگاه تربیت مدرس، تهران، ایران

خلاصه

سوسن چلچراغ (*Lilium ledebourii*) یک گونه نادر آسیایی از تیره سوسنیان است که بومی ایران بوده و در استان گیلان، در ارتفاعات منطقه داماش رشد می‌کند. در این مطالعه، ویژگی‌های ساختاری گل مشتمل بر مطالعه بخش‌هایی از قبیل برچه، پرچم و گلپارها انجام شد. این گیاه دارای یک گل کامل متشکل از شش گلپار (سه گلبرگ و سه کاسبرگ گلبرگ‌آسا)، شش پرچم آزاد و تخمدان سه برچه‌ای است. در سطح مقطع گلپارها، روزنه‌ها و همچنین سلول‌های حاوی آنتوسیانین‌ها مشاهده شدند. در پرچم‌ها، بساک (اپیدرم، لایه مکانیکی لایه‌های میانی و سلول‌های لایه پرستار میانی و میله مشاهده شد. در مادگی، تخمدان (دیواره، حفره، بند تخمک، تخمک آناتروپ، گروه‌های مختلف دسته‌های آوندی، بافت انتقال و روزنه‌ها)، خامه (کانال خامه و بافت انتقال دهنده) و کلاله خشک با بافت پایلای کشیده مشاهده شد. علاوه بر این، حضور آلكالوئیدها در پیاز گل با استفاده از معرف‌های واگنر و درازندورف مورد آزمایش قرار گرفت و محتوای کل آلكالوئیدها در سه نوع عصاره متانولی، اتانولی و بوتانولی بررسی شد. عصاره اتانولی با سایر عصاره‌ها تفاوت معنی‌داری داشت. عصاره متانولی برای بررسی بیشتر با استفاده از کروماتوگرافی گازی-طیف‌سنجی جرمی (GC-MS) انتخاب شد و دو ترکیب Pterin-6-carboxylic acid و Pyrrolizin-1,7-dione-6-carboxylic acid، methyl (ester) شناسایی گردیدند.

واژه‌های کلیدی: آلكالوئید، تخمک آناتروپ، پاپیله، سوسنیان، کاسبرگ شبیه گلبرگ، گلپار

* مستخرج از پایان‌نامه کارشناسی ارشد نگارنده نخست به راهنمایی دکتر فاطمه زرین‌کمر ارائه شده به دانشگاه تربیت مدرس

Introduction

Liliales is a group of Monocotyledon that consists of 10 families and is known by several features such as being a perennial, usually bulbous herb, lacks an onion-like odor, and superior ovary (Simpson 2010, Singh 2014). The family *Liliaceae* is subdivided into three tribes: *Lloydieae*, *Lilieae*, and *Tulipeae* (Kosenko 1999). The genus *Lilium* L. has about 100 species and dispersed in the northern hemisphere (Nishikawa et al. 1999, Hayashi & Kawano 2000). These plants have more expanded in temperate and cold regions (Hayashi & Kawano 2000) and many of them have been scattered in the eastern and western parts of Asia and the Himalayas (Kosenko 1999). The floral formula in the *Lilium* genus is: *p3+3, A3+3 G(3) (Ozen et al. 2012).

Lilium ledebourii (Baker) Boiss. is an endemic plant in Iran, which grows in Damash highlands (Gilan province, north of Iran). This plant grows at an altitude between 1750–2100 m (Azadi & Khosh-Khui 2007). It is a perennial herb having height between 50 and 150 cm, with thick stem, erect leaves, white flowers, capsule fruits, and anomocytic type of stomata on leaves (Farsam et al. 2003). The pollen grain is similar to *L. longiflorum* Thunb. and has the same characteristics as pollen type: monocolpate, pollen shape: a boat-like apertures: colpi and long with an end of more or less pointed, and pollen length: 107–110 μM (Kaviani et al. 2008). In *L. candidum*, *L. ciliatum*, *L. szovitsianum*, and *L. armenum*, all pollen grains are monosulcate; heteropolar, elliptical in polar view and oblate (Güven et al. 2014).

In the transverse section of *L. ledebourii* stem, an epidermal layer is observed that does not have anomocytic stomata. The stem has a thick cuticle, there is a multilayer collenchyma cell immediately after the epidermis, and thereafter there are 3–4 layers of sclerenchyma cells. The innermost layer of the cortex is encapsulated from parenchyma cells without intercellular space. Approximately 40–50 vascular bundles are dispersed without any particular qualities that surrounded

by a sclerenchyma bundle sheath (Kaviani et al. 2008). The stamens are usually made up of the filament and anther that produce pollen. Anther is composed of four microsporangia that arise in two pairs (thecae) and are connected via a connective tissue (Rudall 2007).

Alkaloid is any active and heterocyclic chemical compound, containing nitrogen, which may be involved in some pharmacological or ecological activity (Roy et al. 2019). Over the years, a large number of alkaloids have been identified in wildlife, insects, marine organisms, microorganisms and plants. Alkaloids are now considered part of the chemical defense system in plants (Kruse et al. 2017). These valuable compounds, generally have pharmacological activity, especially for humans. Many of the pharmaceutical drugs used today are derived from alkaloids.

In the present study, the flower structure as well as alkaloids in the bulb of *L. ledebourii* plant were investigated. Since this plant is on the verge of extinction, therefore, attempt was made to investigate the first and most important step in identifying the structure of the reproductive organs (flowers). The genus *Lilium* processes one of the most important commercial flower of the world and success in this field, can provide a good economic opportunity. On the other hand, alkaloids are one of the most important groups of secondary metabolites in plants because of their uses as toxins to herbivores and medicines to humans. Unfortunately, no studies have been done on the flower structure and alkaloids in the bulb of this valuable plant. It seems that, before any preventive action to prevent the extinction of these rare species, the study of flower structure and secondary metabolites, especially in reproductive organs, is of great importance.

Materials and Methods

- Plant materials

After collecting the flowers from its natural habitat (Damash Village in the highlands of Gilan province, north of Iran), they were fixed in a FAA

solution (50% ethanol, 3.65% formaldehyde, and 5% glacial acetic acid) (Yamagishi & Akagi 2013), and transferred to the laboratory.

- Structural observations

In the laboratory, all types of sections (transverse and longitudinal) were taken manually. Besides, some samples were embedded in paraffin (Xing *et al.* 2010), and performed with precise sections by the microtome. Staining of the samples was done by Methylene blue, Alum carmine, Safranin, Hematoxylin, Eosin, and Toluidine blue (McLean & Ireland 1940). These sections and staining were performed in various organs of flower including carpel (ovary, style, and stigma), stamen (filament and anther), pedicel, and petal. The sections were observed with an Olympus light and stereomicroscope and then the images were recorded with a Sony digital camera. Petals, anthers, pollen grains, and stigma were investigated by scanning electron microscope (SEM) (Philips XL 30; Eindhoven, The Netherlands). The materials were vacuum-coated with a layer of gold (100 Å thick) and photographed at a voltage of 15 kV.

- Alkaloids assay

- Alkaloid presence test

The presence of alkaloids was determined by Dragendorff and Wagner reagents. Some of the samples were dissolved in dilute HCl and then two Dragendorff reagent droplets were added. The presence of crystalline sediments indicated the presence of alkaloids in the sample. With Wagner's solution in the sample containing alkaloids, brick deposits are formed (Firdouse & Alam 2011).

- Extraction of alkaloids

To extract the alkaloids, 2 g of dry powder of the plant was first milled in 10 ml of methanol, ethanol, and butanol and then placed in an ultrasonic unit for one hour. The resulting solution was passed through Whatman No. 3 filter paper and then concentrated by the blower pump to a concentration of approximately 0.5 ml (Chebouat *et al.* 2013). In the next stage, it was

completely dissolved in 10 ml of 5% sulfuric acid (Fileto-Pérez *et al.* 2015). The organic compounds such as tannins, fatty acids, etc. can be washed with an organic solvent such as diethyl ether (Meshram *et al.* 2015). In the next step, the soluble pH of ammonia or sodium hydroxide reached about 11. They were washed again with chloroform (an organic solvent) for three times. Finally, by evaporation of chloroform, the raw alkaloids were precipitated at the bottom of the dish (Erdemoglu *et al.* 2009).

- Reagent preparation

Green bromocruzol solution was obtained by dissolving 69.8 mg green bromocruzol in 3 ml 2N sodium hydroxide plus 5 ml distilled water by heat. The resulting solution was diluted in 1000 ml of distilled water. Two M phosphate buffer solution at pH = 4.7 was obtained by dissolving 71.6 g of sodium phosphate in one liter of distilled water. To achieve the desired pH in another container, 42.02 g of citric acid was dissolved in one liter of distilled water and gradually added to the first solution until it reached pH = 4.7 (Fazel *et al.* 2010, Tabasum *et al.* 2016).

- Standard curve

Pure atropine was prepared from the Tirakam Iranian Company to draw the standard curve as standard. For this purpose, 100 mg of it was dissolved in 10 ml of distilled water. For drawing the standard curve, different amounts of standard solution (0, 0.2, 0.4, 0.6, 0.8, 1, and 1.2 ml) were taken. Then 5 ml of phosphate buffer and 5 ml of green bromocruzol were added to each sample. It was washed with 5, 8, and 10 ml of chloroform with vigorous shaking, transferred to a 25 ml balloon of chloroform phase, and then reached volume by chloroform. The resulting solution was read three times at 415 nm. The read absorbance was then subtracted from the zero concentration and plotted on a standard diagram (Tabasum *et al.* 2016).

- Total alkaloids assay

Five mg of extracts (methanol, ethanol, and butanol) were dissolved in 10 ml of distilled water. Then,

one ml of each was harvested and 5 ml of phosphate buffer and 5 ml of green bromocruzol were added. The resulting solution was extracted with 5, 8, and 10 ml of chloroform. The chloroform phase solution was transferred to a 25 ml balloon and then reached volume by chloroform. Finally, each solution was read three times at 415 nm.

- GC-MS analysis

An Agilent GC-MS system was used to measure the alkaloid compounds in the samples at EI 70 eV. HP-5MS column (30 m × 0.25 mm × 0.25 μm) was used for this purpose. The temperature program of this experiment was as follows. They were stored at 120 °C for one min. Then, at a rate of 15 °C/min, the temperature rose from 120 °C to 210 °C. Thereafter, the temperature rose from 210 °C to 260 °C at 8 °C/min. Then the temperature reached 15 °C from 260 °C to 300 °C and the helium gas flow rate was set to 1 ml/min (Erdemoglu et al. 2009).

In the next stage, 2 mg of methanol extract was dissolved in 1 ml of methanol and injected into the GC-MS system. The methanol extraction was chosen because in previous experiments it was shown that, this extraction is suitable for analysis of alkaloid compounds (Zishan et al. 2017). The alkaloids and other compounds in the sample were identified by Mainlib database.

- Statistical analyses

Analyses of data were performed using SPSS 23 software for ANOVA and Duncan's multiple range test was used to compare the mean values for this experiment.

Results

- Structural observations

Lilium ledebourii had a complete and actinomorphic flower, which consisted of six tepals (three petal-like sepals, and three petals), six free stamens, and gynoecium with a superior ovary. The arrangement mod of sepals and petals in a floral bud is known as imbricate aestivation and the floral formula in this genus is: *p3+3, A3+3 G (3) (Fig. 1).

- Gynoecium

- Ovary

In the transverse section of *Lilium ledebourii* ovary (Fig. 2A), the axial placentation was determined. Epidermis that consisted of compressed square shape cells were covered by a thick cuticle except at the anomocytic stomata with 4–5 subsidiary cells.

The ovarian wall consisted of six vascular bundles with three locules. In this plant, locule was surrounded by transmitting tissue cells that very similar to the epidermis in shape (Fig. 2B). In fact, this tissue was continued from the same tissue in the style. In *L. ledebourii* each locule containing two anatropous ovules (ovule consisted of inner and outer integument and embryo sac), that connected to placenta via funiculus (Fig. 2C).

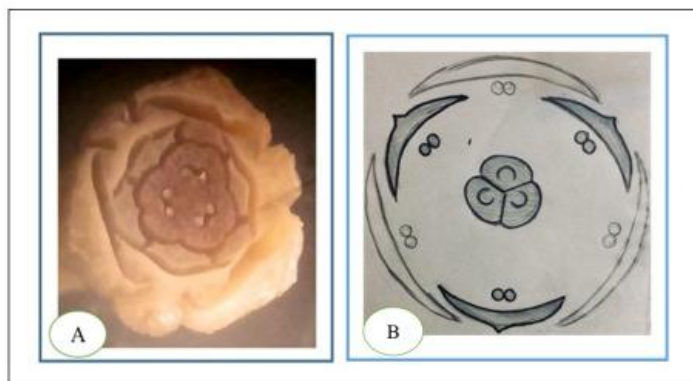


Fig. 1. Imbricate aestivation arrangement of tepals in *Lilium ledebourii*: A. Binocular stereo-microscope, B. Schematic diagram.

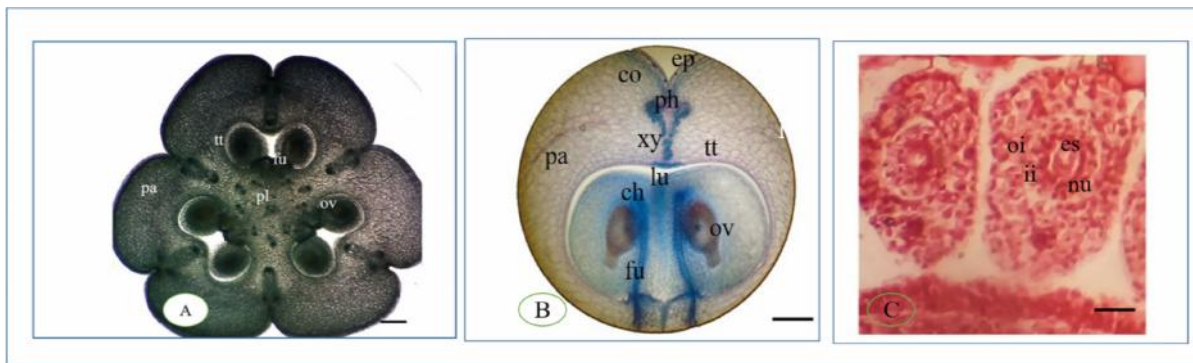


Fig. 2. Gynoecium in *Lilium ledebourii*: A. Cross section of ovary (4x), B. Close up of locule (10x), C. Ovules in the longitudinal section. ch: chalaza, pa: parenchyma, pl: placenta, ov: ovule, fu: funiculus, tt: transmitting tissue, ep: epidermis, ph: phloem, xy: xylem, lu: locule, es: embryo sac oi: outer integument, ii: inner integument, nu: nucellus (Bar = 100 μ m).

- Style

Style in the *Lilium ledebourii* was triangular-shaped and about 3.5 cm in height. The number of vascular bundles in the style was an indicator of the number of carpels (Fig. 3). In the transverse section, it was revealed that, the style is covered by cuticle. Epidermis in style was compact and consisted of square shape cells. Under the epidermis, there were parenchymal cells surrounding the vascular bundles. Central stylar canal provides a pathway for the movement of the pollen tube toward the ovary. Stylar canal was surrounded by transmitting tissue, which consisted of square-shape cells

that compressed together. These results showed that, the styles in *L. ledebourii* are hollow.

- Stigma

The stigma is a special secretion tissue to receive pollen grains. In the transverse section, it was observed that, the epidermis cells had a variety of elongated papillae that were surrounded by the primary cell wall, had a waxy cuticle, and surround the parenchyma tissue (Fig. 4A).

The image of the SEM microscope revealed that, there was a specific adhesion and interaction between the grain and papillae of the stigma (Fig. 4B).

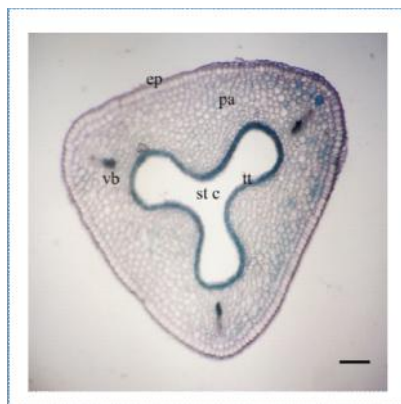


Fig. 3. Transverse section of style in *Lilium ledebourii*. ep: epidermis, pa: parenchyma, tt: transmitting tissue, vb: vascular bundle, stc: stylar canal (Bar = 100 μ m).

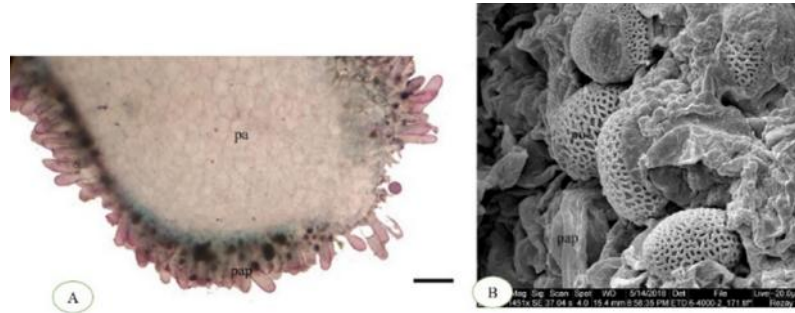


Fig. 4. Transverse section of stigma in *Lilium ledebourii*: A. Light microscope (x4), showing papillae with primary cell wall, B. SEM, showing pollen on the stigma surface within elongated papillae. pa: parenchyma, pap: papillae, po: pollen (Bar = 100 μ m).

- Stamen
- Anther

Anther in *L. ledebourii*, which consisted of four microsporangia was separated into two pairs (thecae) linked by a connective. Each theca possesses two sporangia or anther locules divided by a septum (Figs 5A & B). The anther wall consisted of several layers of cells. In the transverse section, four distinct layers were observed: epidermis, endothecium, middle layers, and an innermost tapetum. The epidermis was an outermost layer of anther that has a protective function in the mature anther; epidermal cells were very smooth. The

endothelium was the hypodermal layer of the anther wall that usually consisted of a single layer. The endothecium cells were radially elongated, had reached the maximum development and endothelial cells typically develop fibrous thickenings, which contributed to the anther dehiscence mechanism. Middle layers consisted of single layers that developed secondary thickenings similar to that of endothecium cells. Innermost layer of the anther wall was a single layer tapetum that completely surrounds the sporogenous tissue (Figs 5C & D).

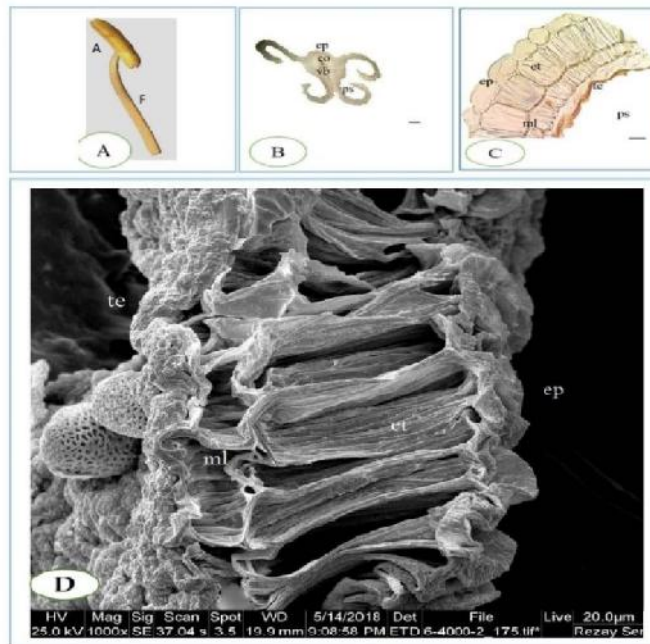


Fig. 5. Androecium in *Lilium ledebourii*: A. Stamen consists of anther and filament, B. Transverse section of anther, C. Hand section of pollen sac (x10), D. SEM micrograph of pollen sac layers. a: anther, f: filament, ep: epidermis, co: connective, vb: vascular bundle, et: endothecium, ml: middle layer, te: tapetum, ps: pollen sac (Bar = 100 μ m).

- Filament

Filaments in *Lilium ledebourii* were 3.3 cm high and had a diameter of approximately 1.7 mm. They were typically cylindrical and slender. In the transverse section, the filament possessed a parenchymatous ground tissue surrounding the vascular bundle, which consisted of a single vascular bundle (Fig. 6).

- Pollen

According to our observations, all pollen grains (monosulcate and heteropolar) in polar views were

elliptical and their surface ornamentation was reticulum cristatum. Polar axis was 100.980 μm and equatorial axis was 132.411 μm . The P/E ratio was 0.762. In this study, the sulcus length (Slg) was 111.279 μm , the sulcus width (Slt) was 27.490 μm , and the Slg/Slt rate was 4.047. The sulcus was narrow, it was deep all over, and was almost equal to the equatorial axis (Fig. 7).

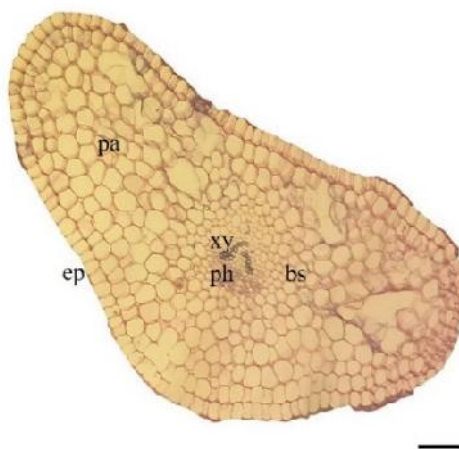


Fig. 6. Filaments in *Lilium ledebourii*, parenchymatous ground tissue surrounding the vascular bundle (x10). pa: parenchyma, ep: epidermis, ph: phloem, xy: xylem (Bar = 100 μm).

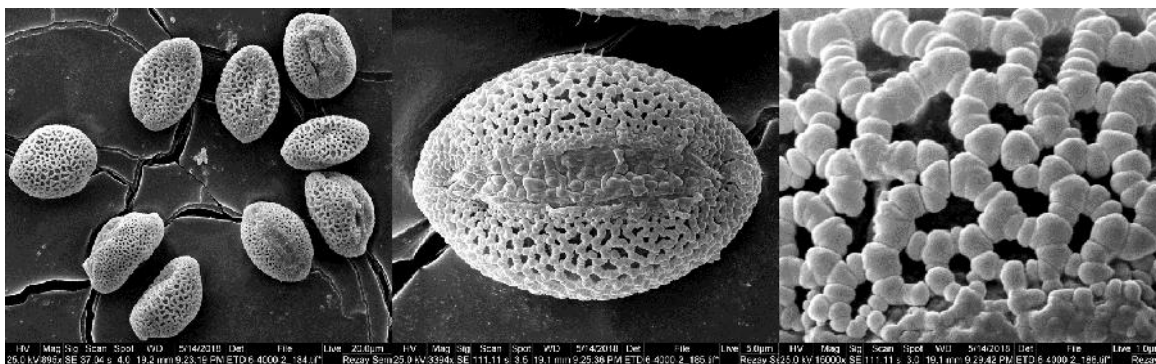


Fig. 7. SEM micrographs of pollen grain in *Lilium ledebourii*.

- Tepals

In *Lilium ledebourii*, the outer two types of floral organs were modified leaf-like structures that had six tepals, of which there were three sepals and three petals (Figs 8A & D).

Sepal in *Lilium ledebourii* was very similar to petals in color, size, and shape (Table 1). Both petals and sepal had purple spots on their adaxial surface; however, the number of spots in the petals was much more than the sepals.

The observation of petal surfaces in *L. ledebourii* revealed that petal spots were arranged around the vascular bundles in the parenchymal cells. Another difference between petals and sepals was the absence of a

stomatal at both surfaces (abaxial and adaxial) in the petals, while both surfaces of the sepals had stomata (Figs 8B, C, E & F).

The SEM observation on the petal surface showed that, spots and nectaries were developed from epidermal cells that occur on adaxial surface of petals and more or less on sepal surface (Figs 8G, J & K). In the transverse sections of petals and sepals, it was observed that they consisted of abaxial and adaxial epidermis and parenchymatous ground tissue that surrounding the vascular bundle. Parenchymal and epidermal cells overlying vascular bundles in adaxial surface of petal can provide a place for the accumulation of anthocyanin pigments (Figs 8H & I).

Table 1. Tepals size in *Lilium ledebourii*

Tepal	Length (cm)	Width (cm)
Sepal	6.7	1
Petal	6.6	1.2

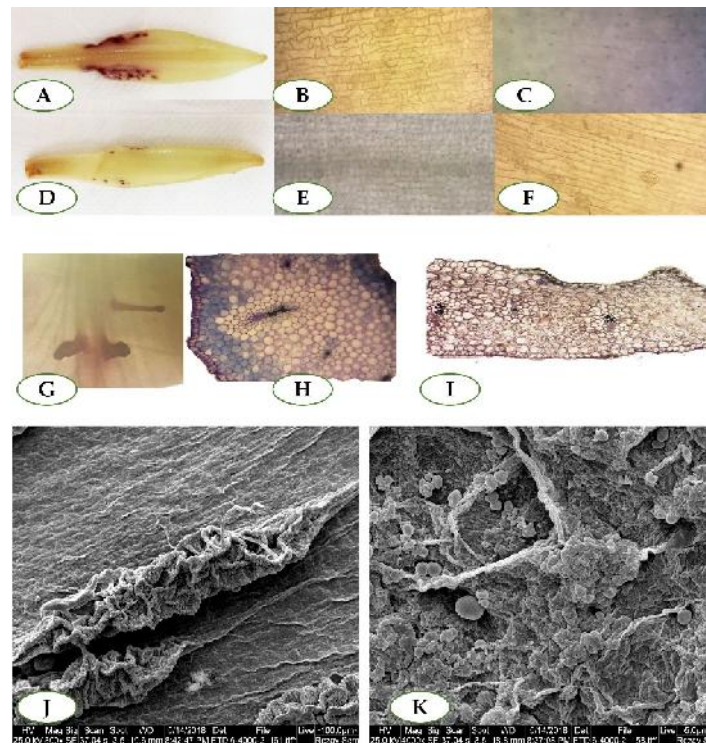


Fig. 8. Tepals in *Lilium ledebourii*: A. Petal, B-C. Abaxial and adaxial surface of petals that lack the stomata, D. Sepal, E-F. Abaxial and adaxial surface of petals that containing the stomata, G, J. Epidermal outgrowths that occur on adaxial surface of petals, K. Nectaries, H-I. Transverse sections of petals and sepals.

- Alkaloids assay

The presence of alkaloids in the bulb of *Lilium ledebourii* was confirmed using Wagner and Dragendorff reagents. The total alkaloid contents in methanol, ethanol, and butanol extracts of *L. ledebourii* bulb were 0.066, 0.081, and 0.059 $\mu\text{g}/\text{mg}$, respectively (Fig. 9). There was a significant difference in total alkaloid content between ethanol extract and other extracts (methanol and butanol). However, there was no significant difference between methanol and butanol extracts.

The methanol extraction was analyzed by GC-MS and the compounds in samples were identified using Mainlib and Replib databases. As presented in table 2; 10 compounds were detected. Among the compounds obtained from the Alkaloids Dictionary, Pterin-6-carboxylic acid compound was an alkaloid. Also, Pyrrolizin-1, 7-dione-6-carboxylic acid compound was very similar to the pyrrolizidine alkaloids family that, it is likely to be part of the alkaloids in this family.

Discussion

Lilium ledebourii flower such as other *Liliaceae* family, had six tepals (three petal-like sepals, and three petals), six free stamens and three-lobed gynoecium (Glimn-Lacy & Kaufman 2006), and its flora formula is similar to other *Lilium* that reported previously (Ozen *et al.* 2012). Gynoecium consisted of an ovary, style(s)

and stigma(s). Ovary had axial placentation that consisted of locules for formation ovule. In each theme, two ovules appear that, linked to the placenta by funiculus that already reported (Rudall 2007). Transmitting tissue cells that observed in this plant were already reported by Singh & Walles (1992). Anomocytic stomata on ovary were similar to the leaves that already reported (Farsam *et al.* 2003). Style and stigma were 3-lobed in *L. ledebourii* that are similar to other *Lilium* sp. (*Liliaceae*) (Rudall 2007).

Anther wall in *Lilium ledebourii* consisted of several layers in order from outside to inside, epidermis, endothecium, one to three middle layers and an innermost Tapetum that is similar to *Lilium polyphyllum* that already reported (Dhyani *et al.* 2009). *L. ledebourii* anthers had two lobes with four pollen sac that already reported (Kaviani *et al.* 2008).

The presence of alkaloids in the bulb of *L. ledebourii* was confirmed using the Dragendorff and Wagner and Meyer tests, which is in accordance with the results of the study on *Lilium candidum* (Devi *et al.* 2016). There are several reports of the presence of types of alkaloids in the bulb of the *Lilium* genus (Buckingham *et al.* 2010, Mimaki & Sashida 1990). The total alkaloid content observed in the bulb of *L. ledebourii* was very close to the reported value (Meng *et al.* 2015).

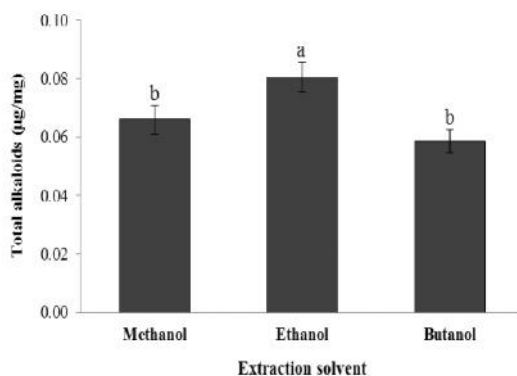
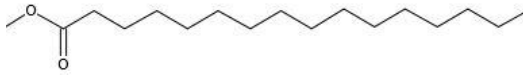


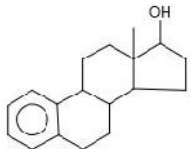
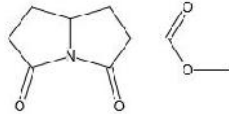
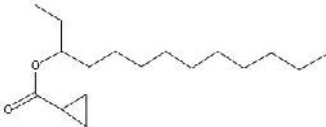
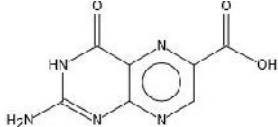
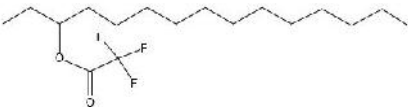
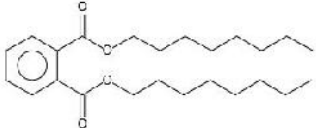
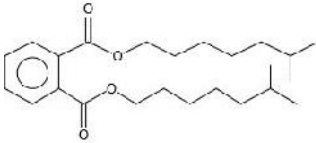


Fig. 9. The content of alkaloid compounds in methanol, ethanol, and butanol extractions of *Lilium ledebourii* bulb.

Table 2. Compounds identified by GC-MS from methanol extraction of *Lilium ledebourii*

Compound name	Chemical formula	Chemical structure
Hexadecanoic acid, methyl ester	C ₁₇ H ₃₄ O ₂	
13,16-Octadecadiynoic acid, methyl ester	C ₁₉ H ₃₀ O ₂	
n-Hexadecanoic acid	C ₁₆ H ₃₂ O ₂	
Estra-1,3,5(10)-trien-17-ol	C ₁₈ H ₂₄ O	
Pyrrolizin-1,7-dione-6-carboxylic acid, methyl (ester)	C ₉ H ₁₁ NO ₄	
3-Cyclopropylcarbonyloxytridecane	C ₁₇ H ₃₂ O ₂	
Pterin-6-carboxylic acid	C ₇ H ₅ N ₅ O ₃	
3-Trifluoroacetoxypentadecane	C ₁₇ H ₃₁ F ₃ O ₂	
Di-n-octyl phthalate	C ₂₄ H ₃₈ O ₄	
1,2-Benzenedicarboxylic acid, diisooctyl ester	C ₂₄ H ₃₈ O ₄	

The composition of Pyrrolizin-1,7-dione-6-carboxylic acid, methyl (ester) has previously observed in plants such as *Adiantum capillus-veneris* Linn (Vadi *et al.* 2017) and *Frankenia pulverulenta* L. (Altameme 2017). This compound has antitumor and antiviral properties (Hussein *et al.* 2016). Pterin-6-carboxylic acid belongs to the Pteridine family of alkaloids and exhibits unique properties such as fluorescence. This family has a significant role in metabolism. These compounds can be found in plants such as *Adiantum capillus-veneris* Linn (Vadi *et al.* 2017) and *Artemisia judaica* (Shiboob 2018). Its mass is 207.148, which is exactly the same as that of extracted in *L. ledebourii* (Buckingham *et al.* 2010). Pterin-6-carboxylic acid has reported to possess many biological activities such as antitumor and antioxidant

References

- Altameme, H.J. 2017. A Chemical composition of Halophyte plant *Frankenia pulverulenta* L. (Frankeniaceae) in Iraq depending on GC-MS and FT-IR techniques. *Journal of Chemical and Pharmaceutical Sciences* 10: 26–33.
- Azadi, P. & Khosh-Khui, M. 2007. Micropropagation of *Lilium ledebourii* (Baker) Boiss as affected by plant growth regulator, sucrose concentration, harvesting season and cold treatments. *Electronic Journal of Biotechnology* 10: 582–591.
- Buckingham, J., Baggaley, K.H., Roberts, A.D. & Szabo, L.F. 2010. *Dictionary of Alkaloids with CD-ROM*. CRC Press, London, 605 pp.
- Chebouat, E., Dadamoussa, B., Kabouche, A., Allaoui, M., Gouamid, M. & Gherraf, N. 2013. Gas chromatography-mass spectrometry (GC-MS) analysis of the crude alkaloid extract of *Ziziphus mauritiana* Lam., grown in Algerian. *Journal of Medicinal Plants Research* 7: 1511–1514.
- Devi, N.I., Kumar, S.N. & Rajaram, C. 2016. Evaluation of hepatoprotective activity of *Lilium candidum* L. in experimental animal models. *World Journal of Pharmaceutical Research* 5: 725–749.
- Hussein *et al.* 2016). activities (Hussein *et al.* 2016).
- In this study, the reproductive organs of *L. ledebourii* were studied and compared with other species of *Lilium*. Besides, the presence and content of alkaloids in the bulb of this plant were investigated. These findings can be effective in reducing the danger of extinction and increasing the economic value of this valuable plant. However, further biochemical and genetic investigations are needed to identify the unknown factors that affect the plant survival and distribution.

Acknowledgment

This study was conducted with financial support from Tarbiat Modares University, Tehran (Iran).

- Dhyani, A., Bahuguna, Y.M., Semwal, D.P., Nautiyal, B.P. & Nautiyal, M.C. 2009. Anatomical features of *Lilium polyphyllum* D. Don ex Royle (Liliaceae). *Journal of American Science* 5: 85–90.
- Erdemoglu, N., Ozkan, S., Duran, A. & Tosun, F. 2009. GC-MS analysis and antimicrobial activity of alkaloid extract from *Genista vuralii*. *Pharmaceutical Biology* 47: 81–85.
- Farsam, H., Amanlou, M., Amin, G., Nezamivand-Chegini, G., Salehi-Surmaghi, M.H. & Shafiee, A. 2003. Anatomical and phytochemical study of *Lilium ledebourii* (Baker) Boiss., a rare endemic species in Iran. *DARU Journal of Pharmaceutical Sciences* 11: 164–170.
- Fazel, S., Hamidreza, M., Rouhollah, G. & Verdian-rizi, M. 2010. Spectrophotometric determination of total alkaloids in some Iranian medicinal plants. *The Society for Advancement of Horticulture* 12: 69–70.
- Fileto-Pérez, H.A., Rutiaga-Quiñones, O.M., Sytsma, M.D., Lorne, I.M., Luo, W., Pankow, J.F. & Rutiaga-Quiñones, J.G. 2015. GC/MS analysis of

- some extractives from *Eichhornia crassipes*. BioResources 10: 7353–7360.
- Firdouse, S. & Alam, P. 2011. Phytochemical investigation of extract of *Amorphophallus campanulatus* tubers. International Journal of Phytomedicine 3: 32–35.
- Glimn-Lacy, J. & Kaufman, P.B. 2006. Botany illustrated: introduction to plants, major groups, flowering plant families. Springer, New York, US. 128 pp.
- Güven, S., Okur, S., Demirel, M., Coskuncelebi, K., Makbul, S. & Beyazolu, O. 2014. Pollen morphology and anatomical features of *Lilium* (Liliaceae) taxa from Turkey. Biologia 69: 1122–1133.
- Hayashi, K. & Kawano, S. 2000. Molecular systematics of *Lilium* and allied genera (Liliaceae): phylogenetic relationships among *Lilium* and related genera based on the *rbcL* and *matK* gene sequence data. Plant Species Biology 15: 73–93.
- Hussein, H.M., Hameed, I.H. & Ubaid, J.M. 2016. Analysis of the secondary metabolite products of *Ammi majus* and evaluation anti-insect activity. International Journal of Pharmacognosy and Phytochemical Research 8: 1192–1189.
- Kaviani, B., Dehkaei, M.P., Darabi, A., Rafizadeh, A. & Rahmati, B. 2008. The anatomical properties of endemic *Lilium ledebourii* (Baker) Bioss. (Liliaceae) species. International Journal of Botany 4: 62–66.
- Kosenko, V. 1999. Contributions to the pollen morphology and taxonomy of the Liliaceae. Grana 38: 20–30.
- Kruse, L.H., Stegemann, T., Sievert, C. & Ober, D. 2017. Identification of a second site of pyrrolizidine alkaloid biosynthesis in comfrey to boost plant defense in floral stage. Plant Physiology 174: 47–55.
- McLean, R.S. & Ireland, E.J. 1940. Rapid staining methods in plant histology. Journal of the American Pharmaceutical Association 29: 318–321.
- Meng, Y., Wang, S., Cai, R., Jiang, B. & Zhao, W. 2015. Discrimination and content analysis of *Fritillaria* using near infrared spectroscopy. Journal of Analytical Methods in Chemistry 1–9. doi:10.1155/2015/752162.
- Meshram, A., Kumar, A. & Srivastava, N. 2015. Gas chromatography-mass spectrometry (GC-MS) analysis of alkaloids isolated from *Epipremnum aureum* (Linden and Andre) bunting. International Journal of Pharmaceutical Sciences and Research 6: 337–342.
- Mimaki, Y. & Sashida, Y. 1990. Steroidal Saponins and Alkaloids from the Bulbs of *Lilium brownii* var. *colchesteri*. Chemical and Pharmaceutical Bulletin 38: 3055–3059.
- Nishikawa, T., Okazaki, K., Uchino, T., Arakawa, K. & Nagamine, T. 1999. A molecular phylogeny of *Lilium* in the internal transcribed spacer region of nuclear ribosomal DNA. Journal of Molecular Evolution 49: 238–249.
- Ozen, F., Temeltas, H. & Aksoy, O. 2012. The anatomy and morphology of the medicinal plant, *Lilium candidum* L. (Liliaceae), distributed in Marmara region of Turkey. Pakistan Journal of Botany 44: 1185–1192.
- Roy, S.D., Dash, S., Dasgupta, R.K. & Chakraborty, J. 2019. Modulatory potential on immune system of a new alkaloid isolated from *Coccinea cordifolia* root. International Journal of Biological Macromolecules 121: 643–649.
- Rudall, P.J. 2007. Anatomy of flowering plants: an introduction to structure and development. Cambridge University Press, pp. 75–93.
- Shiboob, M.H. 2018. Antioxidant activity of phenolic and alkaloid fractions accumulated in *Artemisia judaica* and *Artemisia herba alba*. Journal of Natural Remedies 17: 154–164.

- Simpson, M.G. 2010. Plant systematics. 2nd edn. London: Elsevier-Academic Press. 180 pp.
- Singh, S. & Walles, B. 1992. The ovarian transmitting tissue in *Lilium regale*. International Journal of Plant Sciences 153: 205–211.
- Singh, V. 2014. Flora of Madhya Pradesh (Western part). Scientific Publishers, Jodhpur. 449 pp.
- Tabasum, S., Khare, S. & Jain, K. 2016. Spectrophotometric quantification of total phenolic, flavonoid and alkaloid contents of *Abrus precatorius* L. seeds. Asian Journal of Pharmaceutical and Clinical Research 9: 371–374.
- Vadi, R., Manisha, V. & Swati, K. 2017. Hansraj (*Adiantum capillus veneris* Linn.): A systematic review on its ethnobotany, phytochemical and pharmacological profile. International Journal of Ayurveda and Pharma Research 5: 5–21.
- Xing, M., Du, Y., Wang, X., Niu, L. & Chen, X. 2010. A simplified paraffin embedding method for small botanical samples. Biotechnic & Histochemistry 85: 241–246.
- Yamagishi, M. & Akagi, K. 2013. Morphology and heredity of tepal spots in Asiatic and Oriental hybrid lilies (*Lilium* spp.). Euphytica 194: 325–334.
- Zishan, A., Anwar, S. & Shiwali, S. 2017. Evaluation of in vitro Antioxidant Activity, HPLC and GC-MS Analysis Along With Chemoprofiling of *Decalepis arayalpathra*: A Critically Endangered Plant of Western Ghats, India. Rendiconti Lincei 28: 711–720.