

## Assessing the Diagnostic Value of Plasma-Free DNA in Prostate Cancer Screening

Seyedeh Maryam Seyedolmohadessin<sup>1</sup>, Mohammad Taghi Akbari<sup>2\*</sup>, Zahra Nourmohammadi<sup>1</sup>, Abbas Basiri<sup>3</sup> and Gholamreza Pourmand<sup>4</sup>

<sup>1</sup>Department of Biology, Science and Research Branch, Islamic Azad University, Tehran, Iran; <sup>2</sup>Department of Medical Genetics, Faculty of Medical Sciences, Tarbiat Modares University, Tehran, Iran;

<sup>3</sup>Urology and Nephrology Research Center, Shahid Beheshti University of Medical Sciences, Tehran, Iran;

<sup>4</sup>Urology Research Center, Tehran University of Medical Sciences, Tehran, Iran

Received 15 November 2017; revised 20 December 2017; accepted 26 December 2017

### ABSTRACT

**Background:** Prostate cancer is the second form of cancer among men worldwide. For early cancer detection, we should identify tumors in initial stages before the physical signs become visible. The present study aims to evaluate the diagnostic value of cell-free DNA (cfDNA), its comparison with prostate-specific antigen (PSA) level in prostate cancer screening and also in patients with localized prostate cancer, metastatic form, and benign prostatic hyperplasia (BPH). **Methods:** The participants of this study were selected from 126 patients with genitourinary symptoms suspected prostate cancer, rising PSA, and/or abnormal rectal examination results and 10 healthy subjects as controls. Peripheral blood plasma before any treatment measures was considered. cfDNA was extracted using a commercial kit, and PSA levels were measured by ELISA. The ANOVA test was used to compare the average serum level of PSA and plasma concentration of cfDNA between the groups. The correlation between variables was measured by the Pearson test. **Results:** The subgroups consisted of 50 patients with localized prostate cancer, 26 patients with metastatic prostate cancer, 50 patients with BPH, and 10 healthy subjects; the average concentrations of cfDNA in these subgroups were 15.04, 19.62, 9.51, and 8.7 ng/ $\mu$ l, respectively. According to  $p < 0.0001$  obtained from multivariate test, there was a significant difference between all the groups. **Conclusion:** Our findings indicated significant differences between cfDNA levels of patients with localized and metastatic prostate cancer, and differences of these two groups from BPH and healthy cases show the importance of this biomarker in non-invasive diagnostic procedures. **DOI: 10.29252/ibj.22.5.331**

**Keywords:** Cell-free DNA, Non-invasive diagnosis, Prostate cancer

**Corresponding Author:** Mohammad Taghi Akbari

Department of Medical Genetics, Faculty of Medical Sciences, Tarbiat Modares University, P.O. Box: 14115-331, Tehran, Iran

Tel.: (+98-21) 82884517; Fax: (+98-21) 88893251; E-mail: mtakbari@modares.ac.ir

### INTRODUCTION

Prostate cancer is the second most common malignancy among men worldwide<sup>[1]</sup>. Iran holds the first rank in terms of the incidence of prostate cancer among Asian countries<sup>[2]</sup>, and this type of cancer has been reported as the second most common cancer after gastric cancer among men in Tehran<sup>[3]</sup>.

Recognition of tumors in the early stages contributes to the rapid detection of cancer before physical manifestation of the disease. In such stages, identifying the smallest tumors can be possible by detecting their specific tracks (biomarkers) in the bloodstream<sup>[4]</sup>. Biomarkers can indicate a normal physiological state or a disease state such as progression or response to treatment<sup>[5]</sup>. The prostate-specific antigen (PSA) has been introduced as a routine biomarker for the early

detection of prostate cancer<sup>[6]</sup>. However, it has recently been shown that PSA is not a reliable diagnostic test<sup>[7]</sup>. The main concern surrounding the use of this marker for prostate cancer screening is the lack of specificity. An increase in the levels of PSA can reflect the presence of cancer cells, but it may also represent non-malignant states such as benign prostatic hyperplasia (BPH), infection, or chronic inflammation<sup>[8]</sup>. Given these issues and changes in the relationship between total PSA and the stage of disease<sup>[9]</sup>, it seems that PSA can no longer be considered as a classical tumor marker, whose levels are directly associated with the progression of the disease. It has been suggested that the total PSA may even be found to be decreasing, and not increasing, with the elevation of Gleason score<sup>[9]</sup>. In recent years, although much progress has been made in providing new and efficient markers for screening and diagnosis of prostate cancer, undoubtedly, none of these markers can alone fulfill the diagnostic needs of today in terms of accuracy, precision, and economy. Therefore, the need to find more efficient methods is obvious.

Somatic genetic alterations can be used for diagnostic and prognostic purposes, but the routine methods of sampling are so aggressive, and there is an urgent need for development of less aggressive diagnostic tests. Cell-free DNA (cfDNA) circulating in the blood can originate from apoptosis or necrosis of tumor cells and subsequent release of DNA contents into the bloodstream<sup>[10-12,13]</sup>, and according to what research has revealed today, its level in the blood circulation increases in cancer cases<sup>[14]</sup>. The research has also shown that the level of cfDNA in malignant cases of cancer is higher than in benign ones<sup>[15]</sup>. Following this report, the use of cfDNA, as a predictive marker for prostate cancer, has been evaluated in several studies<sup>[16-20]</sup>. Nonetheless, there are some controversies among researchers on the exact relationship between the cfDNA levels and the severity of the disease. By investigating the cfDNA levels in patients with prostate cancer as well as healthy subjects and also by looking into its relationship with blood PSA levels, we have tried to find out the diagnostic value of these biomarkers in prostate cancer screening.

## MATERIALS AND METHODS

### Patients

The study was conducted on 76 patients with prostate cancer (50 patients with localized prostate cancer and 26 patients with metastatic prostate cancer) over a period of two years, from January 2014 to November 2015. The patients under study referred to one of the two hospitals, Labbafinejad and Sina, located in Tehran, Iran. After the diagnosis of prostate cancer

following digital rectal exam and measurement of PSA serum levels by ELISA method, the patients were referred to be included in the study. Patients entered the study with the following criteria: urinary tract symptoms, positive digital rectal exam (lumps, nodules, the presence of abnormal tissue in the prostate), and serum PSA level above 2.5 ng/ml for individuals between 50 to 65 years old and more than 4 ng/ml for people older than 65 years. The histological degree of tumor for all biopsied samples was determined by the Gleason scoring system<sup>[7,21]</sup>. In addition, 50 patients with BPH, who had been admitted to the same hospitals, were considered as controls.

### Sampling

After obtaining a written consent approved by the Ethics Committee (No. IR.SBMU.UNRC.1393.2) of the Shahid Beheshti University of Medical Sciences (Tehran, Iran) and with the informed consent of the participants, samples of 10 ml were drawn from the venous blood of all cases. In order to avoid raising the false cfDNA level and other factors important in the peripheral blood of individuals<sup>[22-27]</sup>, sampling was performed before the intervention of any treatment, and before prostate surgery was conducted. Blood samples were transferred to tubes containing the anti-coagulant EDTA (Mediplus, UK). Within three hours after collection and with 10 minutes of centrifugation at 4°C at 2500 ×g, in order to minimize cell lysis and DNA release, blood plasma was isolated. The plasma samples were maintained at -80 °C until use.

### Extraction of cfDNA

cfDNA extraction from plasma was performed using a MagCore HF16 (RBC Bioscience, New Taipei City, Taiwan) and its proprietary kit (Kit number 105), according to the protocol provided by the manufacturer. Quantification and purity of the isolated cfDNA were spectrophotometrically determined at 260 and 280 nm in duplicate using a NanoDrop Spectrometer ND-1000C (Thermo Fisher Scientific, USA). Quantitative analysis of serum PSA levels was performed by ELISA. DNA isolation using the magnetic beads system yielded the highest quantity with the best quality of total plasma DNA.

### Statistical analysis

Statistical analysis of the data was conducted using SPSS version 16 (SPSS Inc., Chicago, IL, USA). To compare the average serum levels of PSA and the plasma concentration of cfDNA between the groups, ANOVA test was performed. In all the cases, the significance level was set at 0.05. The Pearson correlation test was used to examine the relationship between each of the two variables.

## RESULTS

The results of statistical analysis showed that the mean age of the patients with localized prostate cancer to be  $63.16 \pm 4.50$  years (age range 55–70 years),  $66.26 \pm 4.37$  years (age range 55–72 years) for patients with metastatic prostate cancer,  $42 \pm 5.62$  years (age range 54–76 years) for patients with BPH, and  $61.00 \pm 3.91$  years (age range 55–68 years) for normal subjects. Significant differences between different age groups were not observed ( $p = 0.097$ ; Table 1).

Clinical studies of individuals in the case group using the Gleason scale indicated that the Gleason score was less than or equal to 7 in 49 patients (98%) with localized prostate cancer patients and 17 (65.38%) patients with metastatic prostate cancer. The Gleason score was higher than 7 in one patient (2%) in the first group and 9 patients (34.62%) in the second group (Table 1).

Measurement of the serum levels of PSA by ELISA method showed that the mean serum levels of PSA were as follows:  $28.20 \pm 3.46$  ng/ml (range 5.90–121.0 ng/ml, in patients with metastatic prostate cancer),  $18.48 \pm 2.28$  ng/ml (range 4.50–112.0 ng/ml, in patients with localized prostate cancer),  $7.93 \pm 3.71$  ng/ml (range 1.27–20.5 ng/ml, in patients with BPH), and  $1.42 \pm 0.72$  ng/ml (range 0.5–2.5 ng/ml, in healthy subjects). Data comparison demonstrated a significant difference between the mean serum levels of PSA in the control and case groups ( $p = 0.001$ ; Table 1).

Mean plasma concentration of cfDNA in patients with metastatic prostate cancer was  $19.62 \pm 4.82$  ng/ $\mu$ l (range 12.5–31.30 ng/ $\mu$ l) and in patients with localized prostate cancer was  $15.04 \pm 3.21$  ng/ $\mu$ l (range 10.5–

25.10 ng/ $\mu$ l), whereas it was  $9.51 \pm 2.13$  ng/ $\mu$ l (range 6.50–14.5 ng/ $\mu$ l) in patients with BPH and  $7.8 \pm 1.29$  ng/ $\mu$ l (range 6–10 ng/ $\mu$ l) in normal subjects. There was a significant difference between the groups in terms of the mean plasma concentration of cfDNA ( $p < 0.0001$ ; Table 1).

To investigate the relationship of cfDNA level among the groups of patients with metastatic prostate cancer and localized prostate cancer and also that with BPH, ANOVA test was used. Given  $F = 107.312$  and  $p < 0.0001$ , there were statistically significant differences between all the groups. It is clear that there was a significant difference between metastatic prostate cancer and localized prostate cancer cases and even in BPH cases with both groups of cancer (metastatic and localized).

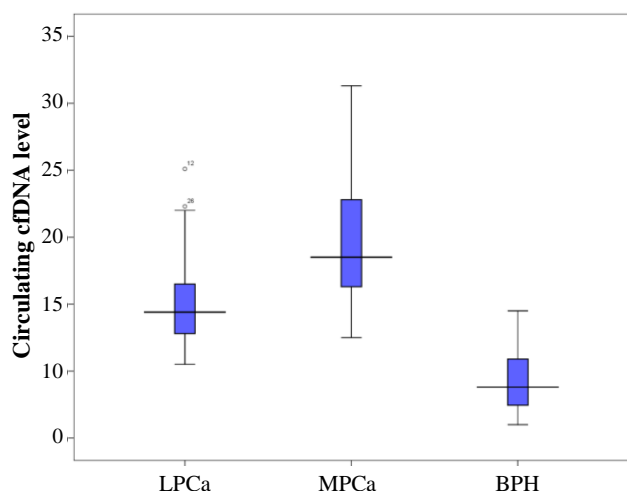
The Pearson correlation test, which was used to examine the relationship between cfDNA level and age, displayed a weak correlation between these two variables ( $p < 0.0001$  and  $r = 0.306$ ). The results also showed that with increasing age, the cfDNA in plasma levels increased (Fig. 2A).

The relationship between the variables, cfDNA levels, and PSA levels, using Pearson correlation test, showed that there is a correlation between cfDNA and PSA ( $p < 0.0001$  and  $r = 0.536$ ). The correlation intensity obtained was moderate. The results also indicated that with increasing PSA levels, cfDNA in plasma levels also increased (Fig. 2B).

The Pearson correlation test examined the relationship between age and PSA level and suggested a weak correlation between the two variables ( $p = 0.003$  and  $r = 0.253$ ). The results also showed an increase in PSA levels with increasing age (Fig. 2C).

Table 1. Demographic data of patients under the study

Characteristics	Case group (n = 76)		Control group (n = 60)		P value
	Patients with clinically localized PCA (n = 50)	Patients with metastatic PCA (n = 26)	BPH (n = 50)	Normal (n = 10)	
Age (years) Mean $\pm$ SD	63.16 $\pm$ 4.50	66.26 $\pm$ 4.37	61.42 $\pm$ 5.62	61.00 $\pm$ 3.91	0.097
Range	55-70	55-72	54-76	55-68	
$\leq 65$ n (%)	34 (68.00)	9 (34.61)	37 (74.00)	8 (80.00)	
$> 65$ n (%)	16 (32.00)	17 (65.39)	13 (26.00)	2 (20.00)	
Gleason scores					0.000
$\leq 7$ n (%)	49 (98.00)	17 (65.38)	-	-	
$> 7$ n (%)	1 (2.00)	9 (34.62)	-	-	
Serum PSA ( ng/mL)					0.001
Mean level $\pm$ SD	18.48 $\pm$ 2.28	28.20 $\pm$ 3.46	7.93 $\pm$ 3.71	1.42 $\pm$ 0.72	
Range	4.50-112.0	5.90-121.0	1.27-20.5	0.50-2.50	
cfDNA level (ng/ $\mu$ l)					0.000
Mean level $\pm$ SD	15.04 $\pm$ 3.21	19.62 $\pm$ 4.82	9.51 $\pm$ 2.13	7.8 $\pm$ 1.29	
Range	10.5-25.10	12.5-31.30	6.30-14.5	6-10	



**Fig. 1.** Box plot comparison of plasma DNA concentrations in groups. Numbers show cfDNA level as ng/ml. LPCa, localized prostate cancer; MPCa, metastatic prostate cancer; BPH, benign prostatic hyperplasia

## DISCUSSION

To date, many applications have been proposed for cfDNA, particularly its use in identifying somatic changes in cases where there is no possibility of biopsy. In addition, this exact molecule can be a valuable source of the DNA tumor in cases where the exact origin of primary lesions is not clear. In addition, cfDNA can be used as a very important screening marker in population-based studies<sup>[10]</sup>. While investigating the cfDNA levels of patients with prostate cancer and its comparison with the cfDNA levels of healthy individuals, this study tried to evaluate this marker for use in prostate cancer screening.

The first observations led to the conclusion that cfDNA is caused by tumor tissue, suggesting that there are some mutations in the proto-oncogenes and tumor suppressors, such as KRAS2 and TP53 in the tumor tissue and in cfDNA. Also, as confirmation of these observations, cfDNA in cancer patients has biophysical properties similar to tumor cells<sup>[28]</sup>. However, the ease of collection and reproducibility of sampling introduce cfDNA as a suitable marker for tumor tracking during treatment<sup>[29]</sup>. On the other hand, Diehl *et al.*<sup>[30]</sup> have suggested that the ratio of tumor cfDNA to total cfDNA depends on various factors, such as tumor size, cancer type, disease stage, and the location of the tumor. In the present study, there were significant differences between cfDNA levels in the blood of patients with localized and metastatic prostate cancers. These levels were significantly higher in the second group of the patients ( $p < 0.0001$ ).

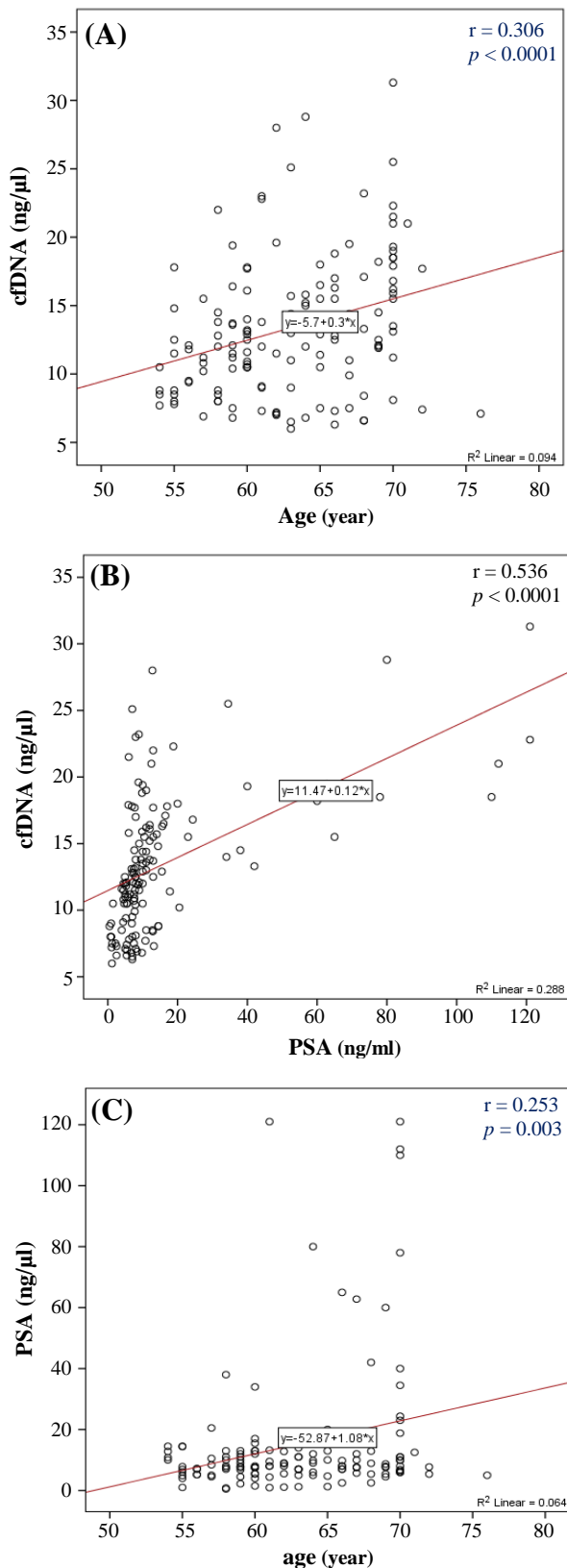
In two previous studies, Stroun and Anker<sup>[31]</sup> and

Anker *et al.*<sup>[32]</sup> suggested that the enzyme activity of DNase 1 and DNase 2 in healthy people damages DNA in circulating blood. However, little activity of these enzymes has been observed during malignancy. The reason is due to the inhibitors of enzyme activity in cancers and can be explained by the high levels of cfDNA. In this study, there was a significant difference between the case and control group in the plasma cfDNA level ( $p < 0.0001$ ). Barry *et al.*<sup>[33]</sup> showed that the high level of cfDNA concentration is because of decreasing DNase activity.

Until now, a definitive and an approved mechanism for the process of entering healthy cells into the bloodstream has not been recommended. A previous study showed the high level of cfDNA in PCa plasma patients compared to BPH<sup>[34]</sup>. The only proposed hypothetical mechanisms for this phenomenon include apoptosis, necrosis, and release of healthy cells into the bloodstream, followed by destruction of the cells and release of their DNA contents into the bloodstream<sup>[10]</sup>.

There have been cases of healthy cells being isolated from the bloodstream of patients with prostate, liver, and breast cancers<sup>[34]</sup>. There was a good agreement between the DNA hypermethylation patterns of circulating tumor cells and cfDNA in prostate cancer<sup>[35,36]</sup>. The destruction of tumor cells in the bloodstream can be considered as a reason for the presence of large pieces of cfDNA in the blood. In a study by Barry *et al.*<sup>[33]</sup>, an eightfold increase was observed in the median levels of cfDNA, as a marker, in lung cancer cases in comparison to healthy patients. Following various reports<sup>[34-37]</sup>, the use of cfDNA, as a marker for prostate cancer, has also been evaluated in other studies<sup>[16,17]</sup>. One of the studies showed that there is no difference between the levels of cfDNA in patients with localized prostate cancer and BPH; however, the levels of this marker indicated a significant increase in prostate cancer metastasis<sup>[18]</sup>. In contrast to these findings, there was a significant difference between the levels of cfDNA in patients with localized prostate cancer and BPH in the present study ( $p < 0.0001$ ).

There have been successful efforts to differentiate between patients with prostate cancer and healthy people using cfDNA<sup>[38]</sup>. The possibility of using cfDNA in diagnosis has been approved as a result of all these efforts<sup>[16-20,38]</sup>. According to the findings of our study, it seems that there are significant differences in cfDNA levels in patients with metastatic prostate cancer and patients with localized prostate cancer. The significant difference of cfDNA level among all groups in the present study indicate the importance of using these biomarkers in non-invasive diagnostic procedures. We showed older men have higher PSA



**Fig. 2.** Correlation of cfDNA level with age and PSA levels and the correlation of PSA levels with age. The scatter diagrams show the Pearson correlation coefficient in A (cfDNA level and age), B (cfDNA level and PSA level), and C (PSA level and age).

and cfDNA in their blood. It means that there is a correlation between age, plasma DNA, and PSA. Thus, cfDNA can be used as a suitable substitute for biopsies in the future with further developments in the field of cancer-screening tests and tests that require DNA samples of cancer cells. Probably, cfDNA level assessment together with PSA can be complementary tests for early screening. Gordian *et al.*<sup>[38]</sup> have reported that cfDNA level increases the specificity of PSA test, especially in early prostate cancer detection.

As a conclusion, cfDNA can be used as a non-invasive and a promising novel biomarker; therefore, it could be a robust tool for prognosis and diagnosis goals. In addition, detection of genetic alterations in cfDNA such as loss of heterozygosity along with cfDNA level in prostate cancer patients may help in early diagnosis<sup>[39]</sup>. However, further studies, on a large scale of population, may be required to validate these data.

#### ACKNOWLEDGMENTS

The authors sincerely thank all those who have accompanied us in this project. We also acknowledge the cooperation and financial support of Tehran Laboratory of Medical Genetics (project No. 92.002), Iran.

**CONFLICT OF INTEREST.** None declared.

#### REFERENCES

1. Siegel RL, Miller KD, Jemal A. Cancer statistics, 2016. *A cancer journal for clinicians* 2016; **66**(1): 7-30.
2. Akbari ME, Hosseini SJ, Rezaee A, Hosseini MM, Rezaee I, Sheikhvatan M. Incidence of genitourinary cancers in the Islamic Republic of Iran: a survey in 2005. *Asian Pacific journal of cancer prevention* 2008; **9** (4): 549-552.
3. Mohagheghi MA, Mosavi-Jarrahi A, Malekzadeh R, Parkin M. Cancer incidence in Tehran metropolis: the first report from the Tehran population-based cancer registry, 1998-2001. *Archives of Iranian medicine* 2009; **12**(1): 15-23.
4. Lutz AM, Willmann JK, Cochran FV, Ray P, Gambhir SS. Cancer screening: A mathematical model relating secreted blood biomarker levels to tumor sizes. *PLoS medicine* 2008; **5**(8): e170.
5. Ilyin SE, Belkowski SM, Plata-Salamán CR. Biomarker discovery and validation: technologies and integrative approaches. *Trends in biotechnology* 2004; **22**(8): 411-416.
6. Heidenreich A, Bastian PJ, Bellmunt J, Bolla M, Joniau S, van der Kwast T, Mason M, Matveev V, Wiegel T, Zattoni F, Mottet N; European Association of Urology.

- EAU guidelines on prostate cancer. Part 1: screening, diagnosis, and local treatment with curative inten-update 2013. *European urology* 2014; **65**(1): 124-137.
7. Thompson IM, Goodman PJ, Tangen CM, Lucia MS, Miller GJ, Ford LG, Lieber MM, Cespedes RD, Atkins JN, Lippman SM, Carlin SM, Ryan A, Szczepanek CM, Crowley JJ, Coltman CA Jr. The influence of finasteride on the development of prostate cancer. *New England journal of medicine* 2003; **349**(3): 215-224.
  8. Plesko I, Obsitnikova A, Cuninkova M, Tomasek L, Stefanakova D, Kubik A. Increasing occurrence of urological cancers in Slovakia. *Neoplasma* 2004; **51**(4): 248-254.
  9. Crawford ED, Rove KO, Trabulsi EJ, Qian J, Drewnowska KP, Kaminetsky JC, Huisman TK, Bilowus ML, Freedman SJ, Glover WL Jr, Bostwick DG. Diagnostic performance of PCA3 to detect prostate cancer in men with increased prostate specific antigen: a prospective study of 1,962 cases. *The journal of urology* 2012; **188**(5): 1726-1731.
  10. Gormally E, Caboux E, Vineis P, Hainaut P. Circulating free DNA in plasma or serum as biomarker of carcinogenesis: practical aspects and biological significance. *Mutation research* 2007; **635**(2-3): 105-117.
  11. Fleischhacker M, Schmidt B. Circulating nucleic acids (CNAs) and cancer-a survey. *Biochimica et Biophysica Acta* 2007; **1775**(1): 181-232.
  12. Jahr S, Hentze H, Englisch S, Hardt D, Fackelmayer FO, Hesch RD, Knippers R. DNA fragments in the blood plasma of cancer patients: quantitations and evidence for their origin from apoptotic and necrotic cells. *Cancer research* 2001; **61**(4): 1659-1665.
  13. Ramachandran K, Speer CG, Fiddy S, Reis IM, Singal R. Free circulating DNA as a biomarker of prostate cancer: comparison of quantitation methods. *Anticancer research* 2013; **33**(10): 4521-4529.
  14. Yin C, Luo C, Hu W, Ding X, Yuan C, Wang F. Quantitative and qualitative analysis of circulating cell-free DNA can be used as an adjuvant tool for prostate cancer screening: A meta-analysis. *Disease markers* 2016; **2016**: 3825819.
  15. Chen X, Bonnefoi H, Diebold-Berger S, Lyautey J, Lederrey C, Faltin-Traub E, Stroun M, Anker P. Detecting tumor-related alterations in plasma or serum DNA of patients diagnosed with breast cancer. *Clinical cancer research* 1999; **5**(9): 2297-2303.
  16. Chun FK, Müller I, Lange I, Friedrich MG, Erbersdobler A, Karakiewicz PI, Graefen M, Pantel K, Huland H, Schwarzenbach H. Circulating tumour-associated plasma DNA represents an independent and informative predictor of prostate cancer. *BJU international* 2006; **98**(3): 544-548.
  17. Cherepanova AV, Tamkovich SN, Bryzgunova OE, Vlassov VV, Laktionov PP. Deoxyribonuclease activity and circulating DNA concentration in blood plasma of patients with prostate tumors. *Annals of the New York academy of sciences* 2008; **1137**: 218-221.
  18. Jung K, Stephan C, Lewandowski M, Klotz S, Jung M, Kristiansen G, Lein M, Loening SA, Schnorr D. Increased cell-free DNA in plasma of patients with metastatic spread in prostate cancer. *Cancer letters* 2004; **205**(2): 173-180.
  19. Altamari A, Grigioni AD, Benedettini E, Gabusi E, Schiavina R, Martinell A, Morselli-Labate AM, Martorana G, Grigioni WF, Fiorentino M. Diagnostic role of circulating free plasma DNA detection in patients with localized prostate cancer. *American journal of clinical pathology* 2008; **129**(5): 756-762.
  20. Salvi S, Gurioli G, De Giorgi U, Conteduca V, Tedaldi G, Calistri D, Casadio V. Cell-free DNA as a diagnostic marker for cancer: current insights. *Oncotargets and therapy* 2016; **9**: 6549-6559.
  21. Roehrborn CG, McConnell J, Bonilla J, Rosenblatt S, Hudson PB, Malek GH, Schellhammer PF, Bruskewitz R, Matsumoto AM, Harrison LH, Fuselier HA, Walsh P, Roy J, Andriole G, Resnick M, Waldstreicher J. Serum prostate specific antigen is a strong predictor of future prostate growth in men with benign prostatic hyperplasia. PROSCAR long-term efficacy and safety study. *The journal of urology* 2000; **163**(1): 13-20.
  22. Xu LL, Srikantan V, Sesterhenn IA, Augustus M, Dean R, Moul JW, Carter KC, Srivastava S. Expression profile of an androgen regulated prostate specific homeobox gene NKX3. 1 in primary prostate cancer. *The journal of urology* 2000; **163**(3): 972-979.
  23. Berggren P, Kumar R, Sakano S, Hemminki L, Wada T, Steineck G, Adolfsson J, Larsson P, Norming U, Wijkström H, Hemminki K. Detecting homozygous deletions in the CDKN2A (p16INK4a)/ARF (p14ARF) gene in urinary bladder cancer using real-time quantitative PCR. *Clinical cancer research* 2003; **9**(1): 235-242.
  24. Brown VL, Harwood CA, Crook T, Cronin JG, Kelsell DP, Proby CM. p16INK4a and p14ARF tumor suppressor genes are commonly inactivated in cutaneous squamous cell carcinoma. *Journal of investigative dermatology* 2004; **122**(5): 1284-1292.
  25. Lutchman M, Pack S, Kim AC, Azim A, Emmert-Buck M, van Huffel C, Zhuang Z, Chishti AH. Loss of heterozygosity on 8p in prostate cancer implicates a role for dematin in tumor progression. *Cancer genetics and cytogenetics* 1999; **115**(1): 65-69.
  26. Sorrentino A, Thakur N, Grimsby S, Marcusson A, von Bulow V, Schuster N, Zhang S, Heldin CH, Landström M. The type I TGF- $\beta$  receptor engages TRAF6 to activate TAK1 in a receptor kinase-independent manner. *Nature cell biology* 2008; **10**: 1199-1207.
  27. Konishi N, Nakamura M, Kishi M, Ishida E, Shimada K, Matsuyoshi S, Nagai H, Emi M. Genetic mapping of allelic loss on chromosome 6q within heterogeneous prostate carcinoma. *Cancer science* 2003; **94**(9): 764-768.
  28. Stroun M, Anker P, Maurice P, Lyautey J, Lederrey C, Beljanski M. Neoplastic characteristics of the DNA found in the plasma of cancer patients. *Oncology* 1989; **46**(5): 318-322.
  29. Haber DA, Velculescu VE. Blood-based analyses of cancer: circulating tumor cells and circulating tumor DNA. *Cancer discovery* 2014; **4**(6): 650-661 .

- [ DOI: 10.29252/ibj.22.5.331 ]
- [ Downloaded from ibj.pasteur.ac.ir at 9:55 IRST on Saturday September 22nd 2018 ]
30. Diehl F, Li M, Dressman D, He Y, Shen D, Szabo S, Diaz LA Jr., Goodman SN, David KA, Juhl H, Kinzler KW, Vogelstein B. Detection and quantification of mutations in the plasma of patients with colorectal tumors. *Proceedings of the national academy of sciences USA* 2005; **102**(45): 16368-16373.
  31. Stroun M, Anker P. Nucleic acids spontaneously released by living frog auricles. *Biochemical journal* 1972; **128**(3): 100P-101P.
  32. Anker P, Stroun M, Maurice PA. Spontaneous release of DNA by human blood lymphocytes as shown in an *in vitro* system. *Cancer research* 1975; **35**(9): 2375-2382.
  33. Barry KH, Moore LE, Liao LM, Huang WY, Andreotti G, Poulin M, Berndt SI. Prospective study of DNA methylation at *LINE-1* and *Alu* in peripheral blood and the risk of prostate cancer. *Prostate* 2015; **75**(15):1718-1725.
  34. Fawzy A, Sweify KM, El-Fayoumy HM, Nofal N. Quantitative analysis of plasma cell-free DNA and its DNA integrity in patients with metastatic prostate cancer using ALU sequence. *Journal of the Egyptian national cancer institute* 2016; **28**(4): 235-242.
  35. Bensalah K, Montorsi F, Shariat SF. Challenges of cancer biomarker profiling. *European urology* 2007; **52**(6): 1601-1609.
  36. Atkins MB. Treatment selection for patients with metastatic renal cell carcinoma: identification of features favoring upfront IL-2-based immunotherapy. *Medical oncology* 2009; **26 Suppl**(1): 18-22.
  37. Sozzi G, Conte D, Leon M, Cirincione R, Roz L, Ratcliffe C, Roz E, Cirenei N, Bellomi M, Pelosi G, Pierotti MA, Pastorino U. Quantification of free circulating DNA as a diagnostic marker in lung cancer. *Journal of clinical oncology* 2003; **21**(21): 3902-3208.
  38. Gordian E, Ramachandran K, Reis IM, Manoharan M, Soloway MS, Singal R. Serum free circulating DNA is a useful biomarker to distinguish benign versus malignant prostate disease. *Cancer epidemiology, biomarkers and prevention* 2010; **19**(8): 1984-1991.
  39. Seyedolmohadessin SM, Akbari MT, Nourmohammadi Z, Basiri A, Pourmand G. Detection of loss of heterozygosity (LOH) using circulating cell-free DNA (cfDNA) by fluorescence-based multiplex PCR for identification of patients with prostate cancer. *Applied immunohistochemistry and molecular morphology* 2017. doi: 10.1097/PAI.000000 0000000514.