

Molecular Characterization of *Mycobacterium bovis* Isolates with High Copy Number of IS6110 by Restriction Fragment Length Polymorphism

Behnam Raffiee,¹ Nader Mosavari,*² Sepideh Ghani,³ Davoud Sadeghi,⁴ Rouholah Keshavarz,² Keyvan Tadayon²

1. Department of Biology, Payam-e-Noor University, Arak, Iran
2. Razi Vaccine and Serum Research Institute, Karaj, Iran
3. Young Researchers Club and Elite, Arak Branch, Islamic Azad University, Arak, Iran
4. Department of Biology, Science and Research Branch, Islamic Azad University, Tehran, Iran

Article information	Abstract
<p>Article history: Received: 27 Jan 2013 Accepted: 13 Feb 2013 Available online: 2 Nov 2013 ZJRMS 2014; 16(12):70-72</p> <p>Keywords: <i>Mycobacterium bovis</i> Restriction fragment length polymorphism Tuberculosis</p>	<p>Background: <i>Mycobacterium bovis</i> is the causative agent of bovine tuberculosis and belongs to the <i>Mycobacterium tuberculosis</i> complex. <i>M. bovis</i> usually carries only one or a few copies of the insertion sequence IS6110 in its genome. The aim of this study was evaluation of copy number of IS6110 in <i>M. bovis</i> isolates by restriction fragment length polymorphism (RFLP) method.</p> <p>Materials and Methods: In this experimental study, 25 lymph node specimens of tuberculin-positive cattle were collected and cultured by standard methods, afterward genomic DNA was extracted by chloroform-isoamyl alcohol. Genetic studies were conducted by PvuII and DNA hybridization with IS6110.</p> <p>Results: Two isolates displayed more than of 4 copies of IS6110 by RFLP (IS6110-RFLP) method.</p> <p>Conclusion: The results of this study are unique and specific in Iran but reported in the world rarely. Therefore the new strains of <i>M. bovis</i> imported to Iran from other countries of the world.</p>

Copyright © 2014 Zahedan University of Medical Sciences. All rights reserved.

Introduction

The *Mycobacterium tuberculosis* complex comprises many species and sub-species that cause tuberculosis in a variety of mammalian hosts and includes *Mycobacterium bovis* the principle cause of tuberculosis in cattle [1]. An important disease of domesticated cattle that has a major economic and health impact throughout the world, in contrast to *M. tuberculosis*, which is largely host restricted to humans, *M. bovis* is primarily maintained in cattle, in particular, domesticated cattle, although the pathogen can frequently be recovered from other mammals, including humans [2].

Genomic fingerprinting or DNA analysis by RFLP is a standard method for typing of *M. tuberculosis* complex [3].

Recently strains of *M. bovis* identified in east Africa and name of this group is African 2 (AF2) clonal complex, these strains had four or more IS6110 copies in their genomes and represents over 70% of all cattle isolates from each of these east African countries. Most *M. bovis* isolates frequently have only 1 copy of IS6110 in a common 1.9 kb, PvuII fragments [1, 4, 5]. So far, typing of *M. bovis* strains has not performed by IS6110-RFLP method in Iran and all research on *M. bovis* has been limited to PGRS-RFLP (Polymorphic GC-rich Repetitive Sequences Restriction length fragment polymorphism) and DR-RFLP (Direct repeat-Restriction length fragment polymorphism) methods.

The aim of this study was evaluation of genetic patterns of *M. bovis* strains by IS6110-RFLP method for the first time in Iran.

Materials and Methods

Bacterial strains: In this experimental study, 25 lymph nodes specimens (mediastinal mesenteric and retropharyngeal) from tuberculin-positive cattle were collected from some provinces of Iran (Tehran, Markazi, Hamedan, Mazandaran, Isfahan, Fars, Kermanshah, Qom, West Azerbaijan, East Azerbaijan) and then digested and decontaminated with 5 mL N-acetyl-L-cysteine/sodium hydroxide (5 g/L N-acetyl-L-cysteine 3.5 M NaOH and 0.05 M sodium citrate) for 15 min the digested specimens were centrifuged and neutralized with HCL (0.1 N), the sediments cultured on to Lowenstein Jensen (LJ) medium supplemented with pyovate and incubated at 37°C for 8 weeks [6].

Identification: For identification of the isolates as *M. bovis* performed acid-fast staining and standard biochemical methods including niacin accumulation, nitrate reductase, catalase activity in 22°C and 68°C and resistant to thiophen-2-carboxylic acid hydrazide [7].

DNA extraction: The genomic DNA for RFLP was extracted from the visible colonies according to the method described by chloroform-isoamyl alcohol [8] (all of chemical materials that used for decontamination,

identification and DNA extraction made of the Merck company, Germany). The concentration of extracted DNA was determined by nano drop (Nanodrop, USA) (700-1400 ng/ μ L). Genomic DNA was digested over night at 37°C with the restriction endonuclease PvuII (Roche, Germany). Digestes were separated by electrophoresis for 24 h in 1% agarose gels (Roche, Germany) in 1x TBE buffer at 40 V [9].

Southern blotting: Briefly, the gels were depurinated, denatured, neutralized. The DNA fragments resolved by gel electrophoresis were transferred onto charged nylon membranes (Roche-Germany) by southern blotting [9].

Hybridization and detection: Blots were prehybridized for 2-4 h in a rotating hybridization oven (Memert-England) and were hybridized overnight at 65°C in the same solution containing IS6110 probe was labeled by digoxigenin. Then anti-digoxigenin antibody conjugated with alkaline phosphatase (Roche-Germany) was added to the membrane and the signals were detected on the membrane by adding of the substrate BCIP/NBT (Roche, Germany) to detection buffer [9].

Results

We collected 25 isolates of mycobacterium from lymph nodes of the tuberculin positive cattle and then all of them identified as *M. bovis* by acid fast staining and biochemical tests (Table 1). Twenty three isolates and standard strain of BCG (ATTC 1173P2) indicating presence of only one genomic copies of the IS6110 on 1.9 kb PvuII fragments by RFLP technique, and 2 isolates of *M. bovis* had multiple-band of IS6110 (with more than of 4 copies) (Fig. 1).

Table 1. The results of biochemical tests for differentiation of *M. bovis* and *M. tuberculosis*

Strains	Catalase 22°C	Catalase 68°C	Nitrate reductase	Resistant in TCH
<i>M. bovis</i>	-	-	-	-
<i>M. tuberculosis</i>	+	-	+	+

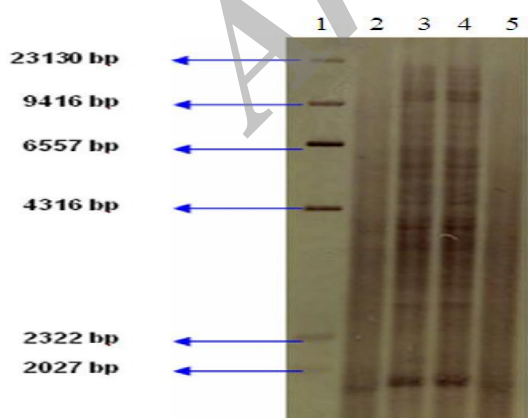


Figure 1. IS6110-RFLP patterns using PvuII lane 1: size marker Dig labeled (Roche, Germany), lane 2: *M. bovis* BCG (ATTC 1173P2) that showing only one copy of the IS6110, lane 3,4: bovine *M. bovis* isolates with multiple-band of IS6110 from Iran, lane 5: bovine *M. bovis* isolate with only one copy of the IS6110 from

Compared and analyzed by special software, such as gel pro analyzer software (Media cybernetics, Italy) was done and it was found that the 2 strains are genetically similar. However in this study our results on IS6110 typing of *M. bovis* strains differ from previous results in Iran and observed strains of *M. bovis* with high copy number of IS6110 that isolated of cattle farm located in Mazandaran province, thus we report a first case of Bovine *M. bovis* isolates with high copy number of IS6110 by RFLP in Iran.

Discussion

In this research we observed 2 isolates of cattle farm located in Mazandaran province with high copy number of IS6110 that is a unique and specific case in Iran.

Today, the use of molecular typing techniques such as RFLP is useful to study genomic patterns. Molecular techniques used in this study have been selected according to world organization for animal health (OIE) recommendations [10]. Feizabadi et al. typed strains of *M. bovis* by IS6110-RFLP, but they did not observed more than 3 copies of IS6110 [11]. According to 1 copy of IS6110 in *M. bovis* isolated from cattle in the world, especially in Asia, the digested DNA hybridized with the IS6110 probe is skipped, on the other hand in the Spain 129 *M. bovis* strains from 5 different Spanish locations were fingerprinted using the IS6110 repetitive element and showed multiple copies (from 2 to 13) of IS6110 in a large proportion (47.4%) of the *M. bovis* strains isolated from cattle that accordance with our study [12, 13].

In other study in Sweden 45 isolates of *M. bovis* from humans and animals were analyzed by RFLP patterns probed by the insertion sequence IS6110. Most human isolates had patterns indicating the presence of only one or two genomic copies of the IS6110 insertion element, but isolates from *M. bovis* infections in 5 herds of farmed deer in Sweden showed a specific RFLP pattern with seven bands, indicating seven copies of the IS6110 sequence [14]. Recently researchers identified the strains of *M. bovis* with 4 or more copies of the insertion sequence IS6110 in east Africa, on the other hand the majority of *M. bovis* strains isolated from cattle, which are thought to carry only 1 or a few copies of IS6110, the results of this study are in agreement with our studies [4]. However *M. bovis* isolates bearing more than 4 copies of IS6110 in their genome have not been reported in Iran yet, thus we report a first case of *M. bovis* isolates with high copy number of IS6110-RFLP patterns in Iran that similar to AF2 clonal complex so it is likely that these strains (with high copy number of IS6110) of *M. bovis* entered in Iran and be involved in the epidemiology of Bovine tuberculosis in Iran; As in the previous study in Iran It was found there was a link between Iranian strains of *M. bovis* and those of its neighboring countries (i.e. Turkmenistan, Azerbaijan, Armenia, Turkey, Iraq, Pakistan and Afghanistan) [15]. Due to the lethality of tuberculosis and *M. bovis* transmission from animals and livestock products to human, we recommend that molecular analysis perform by IS6110-RFLP method for

all of the strains of *M. bovis* in Iran and a molecular identification of the *M. bovis* strains available to be provided in accordance by IS6110-RFLP method.

Acknowledgements

All personals of Razi vaccine and serum research institute especially Tuberculin and Mallein production and research department are acknowledged.

Authors' Contributions

All authors had equal role in design, work, statistical analysis and manuscript writing.

Conflict of Interest

The authors declare no conflict of interest.

Funding/Support

Razi Vaccine and Serum Research Institute, Karaj, Iran

*Corresponding author at:

Razi Vaccine and Serum Research Institute, Karaj, Iran

E-mail: nmosavari@yahoo.com

References

- Smith NH, Berg S, Dale J, et al. European 1: A globally important clonal complex of *Mycobacterium bovis*. *Infect Genet Evol.* 2011; 11(6): 1340-1351.
- Muller B, Hilty M, Berg S, et al. African 1, an epidemiologically important clonal complex of *Mycobacterium bovis* dominant in mali, Nigeria, Cameroon, and Chad. *J Bacteriol.* 2009; 191(6): 1951-1960.
- Collins CH, Grange JM, Yates MD. *Tuberculosis bacteriology: organization and practice.* Burlington: Butterworth-Heinemann; 1997.
- Berg S, Garcia-Pelayo MC, Muller B, et al. African 2, a clonal complex of *Mycobacterium bovis* epidemiologically important in east Africa. *J Bacteriol.* 2011; 193(3): 670-678.
- Whipple DL, Clarke PR, Jarnagin JL and Payeur JB. Restriction fragment length polymorphism analysis of *Mycobacterium bovis* isolates from captive and free-ranging animals. *J Vet Diagn Invest.* 1997; 9(4): 381-386.
- Goyal M, Lawn S, Afful B, et al. Spoligotyping in molecular epidemiology of tuberculosis in Ghana. *J Infect.* 1999; 38(3): 171-175.
- Amirmozafari N, Ramezanzadeh R, Farnia P and Ghazi F. The frequency of Beijing genotype of *Mycobacterium tuberculosis* isolated from tuberculosis patients. *Razi J Med Sci.* 2006; 13(52): 7-17.
- Van Embden JD, Cave MD, Crawford JT, et al. Strain identification of *Mycobacterium tuberculosis* by DNA fingerprinting: recommendations for a standardized methodology. *J Clin Microbiol.* 1992; 31(2): 406-409.
- van Soolingen D, de Haas PE, Kremer K. Restriction fragment length polymorphism typing of mycobacteria. *Methods Mol Med.* 2001; 54: 165-203.
- Human tuberculosis caused by *Mycobacterium bovis*- New York City 2001-2004. *MMWR* 2005; 54(24); 605-608. <http://www.cdc.gov/mmwr/preview/mmwrhtml/mm5424a4.htm>
- Mosavari N, Feizabadi MM, Jamshidian M, et al. Molecular genotyping and epidemiology of *Mycobacterium bovis* strains obtained from cattle in Iran. *Vet Microbiol.* 2011; 151(1-2): 192-199.
- Liebana E, Aranaz A, Dominguez L, et al. The insertion element IS6110 is a useful tool for DNA fingerprinting of *Mycobacterium bovis* isolates from cattle and goats in Spain. *Vet Microbiol.* 1997; 54(3-4): 223-233.
- Cousins D, Williams S, Liebana E, et al. Evaluation of four DNA typing techniques in epidemiological investigations of bovine tuberculosis. *J Clin Microbiol.* 1998; 36(1): 168-178.
- Szewzyk R, Svenson SB, Hoffner SE, et al. Molecular epidemiological studies of *Mycobacterium bovis* infections in humans and animals in Sweden. *J Clin Microbiol.* 1995; 33(12): 3183-3185.
- Tadayon K, Forbes KJ, Soleimani D, et al. A review of the contemporary knowledge of bovine tuberculosis and government policy in Iran. *Vet Microbiol.* 2011; 151(1-2): 148-52.

Please cite this article as: Rafiee B, Mosavari N, Ghani S, Sadeghi D, Keshavarz R, Tadayon K. Molecular characterization of *Mycobacterium bovis* isolates with high copy number of IS6110 by restriction fragment length polymorphism. *Zahedan J Res Med Sci.* 2014; 16(12): 70-72.