

Proteomic Analysis of Gene Expression in Basal Cell Carcinoma

Hamideh Moravej Farshi, MD¹
Hakimeh Zali, PhD²
Mostafa Rezaei-Tavirani, MD²
Parviz Toossi, MD¹

1. Skin Research Center, Shahid Beheshti University of Medical Sciences, Shohada-e Tajrish Hospital, Tehran, Iran
2. Proteomics Research Center, Shahid Beheshti University of Medical Sciences, Tehran, Iran

Corresponding Author:
Hakimeh Zali, PhD
Proteomics Research Center, Shahid Beheshti University of Medical Sciences, Tehran, Iran
E-mail: hakimehzali@yahoo.com

Received: April 20, 2010
Accepted: November 20, 2010

Background: Basal Cell Carcinoma (BCC) is a type of non-melanoma skin cancer. Alteration in gene expression is the important event that happens in cancer cell. Detection of this event is possible by proteomics techniques.

Methods: Normal and tumor tissues were taken from BCC patient. Total proteins were purified by standard methods, and proteins were separated by two-dimensional electrophoresis (2DE). Mass spectrometry (MS-MALDI method) was used as a powerful instrument for protein identification.

Results: Eighty seven spots of protein were detected in 2DE gels out of which, 76 spots had different expression in normal and cancer gel images. Comparison with the data base showed 11 proteins. Nine spots had no association with BCC, but expression of ceruloplasmin and C3b were decreased and increased respectively in cancer tissues, compared to normal cell. The mass spectrometry results were aldolase C, Prx-cis and VDAC.

Conclusion: These recognized proteins, either with increased or decreased expression in cancer tissue, might be considered as new biomarkers in BCC patients.

Keywords: proteomics, basal cell carcinoma, biomarker, ceruloplasmin, prothrombin, C3b

Iran J Dermatol 2010; 13: 112-7

INTRODUCTION

Skin cancer is divided into two major groups: non-melanoma and melanoma. Basal cell carcinoma (BCC) is a type of non-melanoma skin cancer; it is the most common form of cancer¹ and can be destructive and disfiguring. The risk of developing BCC is increased by the following: family history, high cumulative exposure to UV light via sunlight² and carcinogenic chemicals, especially arsenic. Surgery, topical chemotherapy, x-ray, cryosurgery and photodynamic therapy are introduced for its treatment. It is rarely life-threatening but if left untreated, it can be disfiguring³. Genetic studies have shown that loss-of-function mutations in the tumor-suppressor genes or gain-of-function mutations in the smoothed gene lead to the

formation of sporadic basal cell tumors^{3,4}. A significant negative correlation between p53 and bcl-2 expression has been found in the basal cell carcinomas. A disturbance in either p53 or bcl-2 suffices to enhance skin tumor formation by suppressing apoptosis; bcl-2 appears to reduce the rate of spontaneous apoptosis, but an aberrant p53 expression does not, and this factor may solely affect the apoptosis from exogenous genotoxicity⁵. Frequencies of pathogenic genetic mechanisms are contained truncating mutation, missense mutation, splice site mutation and intragenic or large scale deletions or rearrangements. Ptc and smo mRNA expressions might be associated with BCC tumor progression and divide the BCC histological types into two subtypes, superficial and nodular⁶. The positive rate of the expression of p-STAT3 well

correlates with the depth of tumor invasion and with metastasis, but there is no correlation between the positive rate and tumor size⁷. By the way, the procedure that is used to analyze changes in expression of proteins in a cell is proteomics. In proteomic methods, by using two dimensional electrophoresis and mass spectrometry, gene expression can be analyzed. Here, we measured the amount of the expression of proteins in BCC by proteomic techniques and compared them with normal tissue.

PATIENTS AND METHODS

Sampling

Normal and BCC tissues samples were taken from patients. Every section of the sample was confirmed as normal or BCC tissue by a pathologist.

Protein purification⁸

Fresh tissue samples of skin were snap frozen and kept in liquid nitrogen until use. Tissue samples were powdered by micro dismembrator at the maximum speed for 60 seconds under liquid nitrogen conditions. Each powdered tissue sample was added to an appropriate amount of lysis buffer containing 10 mM Tris-HCl pH=7.5, 1 mM MgCl₂, 1 mM EGTA, 0.1 mM Phenylmethylsulfonyl fluoride (PMSF), 5 mM beta mercapto ethanol, 0.5% CHAPS and 10% glycerol. After 30 minutes of incubation on ice, the lysate was centrifuged at 16000g for 30 minutes at 4°C. Protein concentration of all samples was estimated using a Bradford based microassay.

Two dimensional SDS-PAGES⁹

Briefly, normal and cancer cells on 25 mm² dishes were washed three times in PBS. About 300µl lysis buffer (7M urea, 2M thiourea, 4%CHAPS, 0.2-0.3%DTT, 1-2% ampholin 3-10) was added to cell culture and shaking was done in room temperature for about 1 hour. The lysate was centrifuged at 10000 g for 10 min at room temperature. The supernatant was saved at -20°C until used. Linear pH 3-10 Immobilized Dry Strip (17 cm) were rehydrated overnight at 20°C in rehydration buffer (8.5M urea, 2% CHAPS, 40mM DTT, 0.1% ampholin, 0.001% bromophenol blue). The sample (400µg) was

applied during rehydration. The first dimension of the 2D electrophoresis was performed on the PROTEAN IEF Cell system (Bio-Rad). Next, gels were equilibrated for 15 min in the equilibration buffer I (6M urea, 2% SDS, 0.375 M Tris Hcl pH8.8, 20% glycerol, 130mM DTT). A 12% SDS-Polyacrylamide slab gel was used for the second dimension gel electrophoresis. Equilibrated IPG strips were placed on the surface of the second dimension gels and then sealed with 0.5% agarose in SDS electrophoresis buffer (25mM Tris base, 192mM glycine, 0.1%SDS) and were run vertically.

2DE gel staining

After electrophoresis, the gels were stained with Coomassie Brilliant Blue staining¹⁰.

Bioinformatics analysis

2DE gel was scanned and both BCC and normal tissue gels were analyzed by flicker software to compare the spots in one statement in both gels and to get the density of the same spot in each gel.

Mass spectrometry

Silver stained protein spot containing the interested protein was destained thoroughly with 1% H₂O₂ (typically 1 min) and lyophilized to dryness. Silver stain removal using H₂O₂ was performed to enhance peptide adsorption by matrix-assisted laser desorption/ionization time-of-flight mass spectrometry (MALDI)¹¹. The dehydrated gel bands were hydrated with 15 µg/L (Promega, Madison, WI) of porcine trypsin in 25 mmol/L NH₄HCO₃, pH =8.2 on ice for 45 min. Excess trypsin was removed; gel bands were covered with 25 mmol/L NH₄HCO₃, pH=8.2 and incubated at 37°C overnight. Tryptic peptides were extracted from the gel bands with 70% acetonitrile and 0.1% trifluoroacetic acid. The sample was desalted with C18 Zip Tips (Millipore, Bedford, MA) according to the manufacturer's protocols. About 0.5 µL of the sample was co-crystallized with 0.5 µL of α-cyano-4-hydroxycinnamic acid in 50% acetonitrile, 1% trifluoroacetic acid and spotted directly on a stainless steel MALDI target plate. Mass spectra were acquired using a MALDI-TOF/TOF mass spectrometer (Voyager 4700, Applied Biosystems, Foster City, CA). MALDI-TOF/TOF

spectra were internally calibrated (< 20 ppm) using trypsin autolysis products. Post-acquisition baseline correction and smoothing was carried out using software provided with the TOF/TOF instrument. Spectra were submitted to Mascot (<http://matrixscience.com>) for peptide mass fingerprinting.

Bioinformatics detection of proteins

Scanned images of 2DE BCC and normal tissue gels were compared to the data banks by flicker software to detect the spots in one statement in every experiment gel and data bank reference gels.

RESULTS

The spots correspond to the 1) transthyretin (TTR), 2) aldolase C, 3) Apo poss, 4) FGG, 5) ceruloplasmin, 6) unknown protein, 7) cis peroxide reductase (Prx-cis), 8) protrombin, 9) C3b, 10) voltage dependent anion channel (VDAC) and 11) LRG in the two dimensional gels of electrophoresis for the normal skin and BCC skin are shown in the Figures 1 and 2, respectively. Figures 3a and 3b show the spots which correspond to the ceruloplasmin and C3b protein in the two dimensional gels of electrophoresis for the normal skin and BCC skin respectively after analysis by flicker software. The mass spectrometry findings for aldolase C, Prx-cis and VDAC sequencing are illustrated in Figure 4. The amounts of the volume of the labeled spots are tabulated in Table 1.

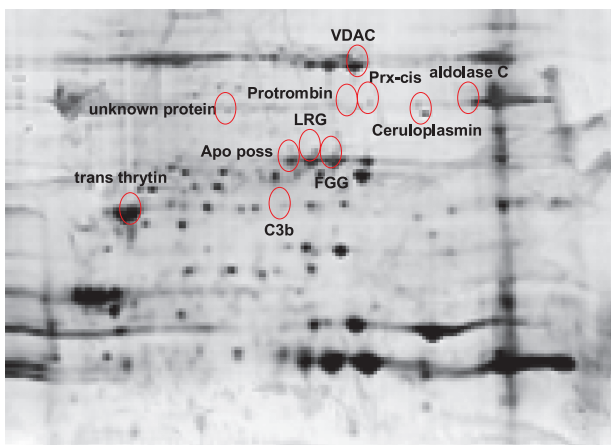


Figure 1. The spots corresponding to transthyretin, aldolase C, Apo poss, FGG, Ceruloplasmin, unknown protein, Prx-cis, Protrombin, C3b, VDAC and LRG in the two dimensional gels of electrophoresis for the normal skin are shown.

DISCUSSION

Proteomics is a powerful science for analyzing different proteins in a cell or tissue. The regulation of gene expression varies extensively among tissues, individuals, strains, populations and species¹²⁻¹⁷. As it is depicted in the Figures 1 and 2, the two dimensional images of normal and BCC cells have different patterns. The variation in gene expression is the hallmark of cancer in these tissues. One of the best ways for detection of the gene expression is proteomics. Previous studies have demonstrated that mutation in genes p53, p14ARF, p16 and PTCH can alter gene expression, resulting in initiating and promoting of BCC^{5,18,19}. Comparison of 2DE gels showed alterations of gene expression in every labeled spot in figures 1 and 2. About 87 spots were recognized in both gels out of which 76 spots had different gene expression. Some of them were up-regulated and the rest were down-regulated (not published). Flicker is a suitable software for determining desired spots. Here, by using flicker, 11 pointed spots were detected which referred to transthyretin, aldolase C, Apo poss, FGG, ceruloplasmin, unknown protein, Prx-cis, protrombin, C3b, VDAC and LRG. Among 11 pointed spots, C3b had a higher expression in BCC than normal cells. Transthyretin, Apo poss and ceruloplasmin, had a lower expression in BCC than normal cells and aldolase C, FGG, unknown protein, Prx-cis, protrombin, VDAC and LRG had no expression in BCC. Mass spectrometry (MS-MALDI method) is a powerful instrument for

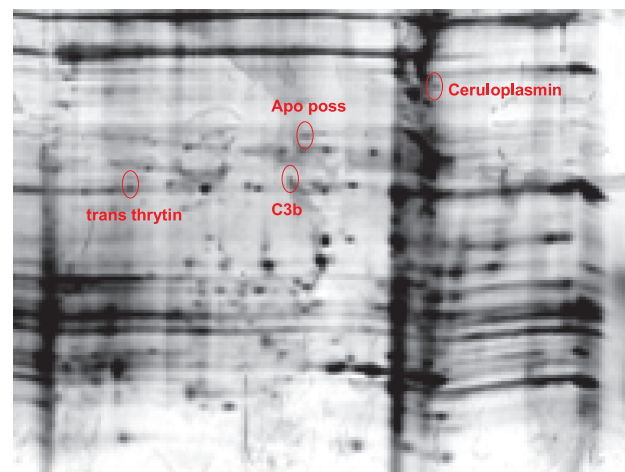


Figure 2. The spots that correspond to the transthyretin, Apo poss, Ceruloplasmin and C3b in the two dimensional gels of electrophoresis for the BCC skin are shown.

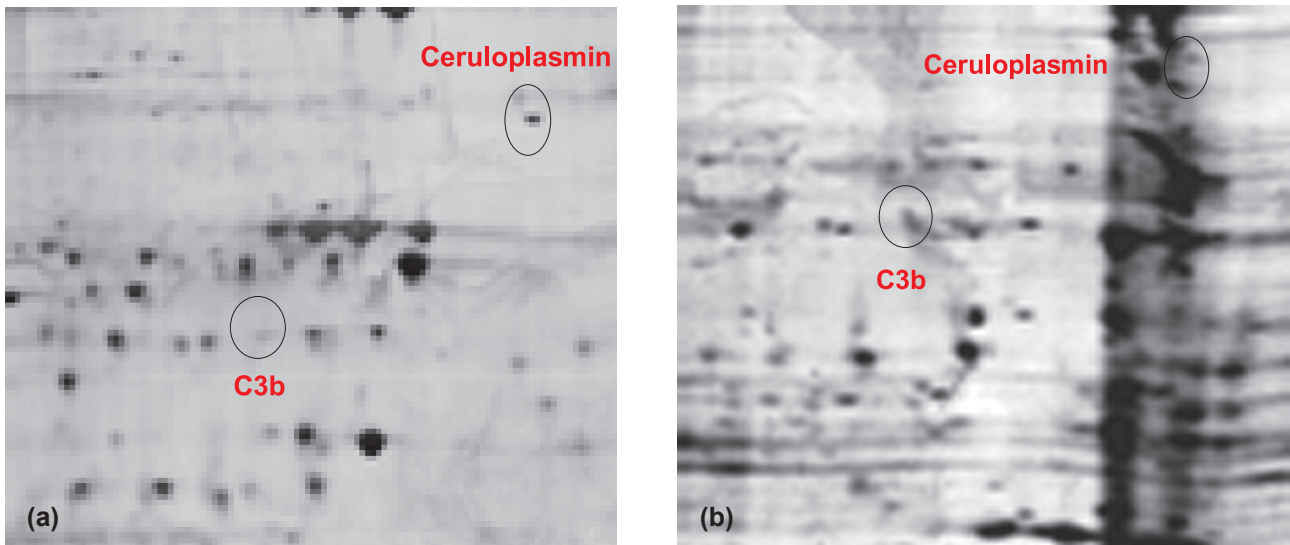


Figure 3. Two dimensional images of a) normal skin and b) BCC skin, the selected spots that are labeled by arrow refer to the ceruloplasmin and C3b protein.

protein identification. The mass results (Figure 4) confirmed that the Flicker findings were real and the yielded proteins were aldolase C, Prx-cis and VDAC. Aldolase C is one of the glycolytic enzymes. The glycolysis pathway is undoubtedly one of the most

centrally situated pathways in metabolism and of the most ancient²⁰. Glycolytic enzymes are associated with cellular structures at all developmental stages, and this is particularly evident during the early stages of morphogenesis²¹. Prx-cis is an antioxidant

a)	<p>1 MPHSYPALSA EQKKELSDIA LRIVTPGKGI LAADESVGSM AKRLSQIGVE</p> <p>51 NTEENRRLYR QVLFSADDRV KKCIGGVIFF HETLYQKDDN GVPFVVRTIQD</p> <p>101 KGILVGIKVD KGVVPLAGTD GETTTQGLDG LLERCAQYKK DGADFAKWRC</p> <p>151 VLKISDRTPS ALAILENANV LARYASICQQ NGIVPIVEPE ILPDGDHDLK</p> <p>201 RCQYVTEKVL AAVYKALSDH HVYLEGTLK PNMVTPGHAC PIKYSPEEIA</p> <p>251 MATVTALRRT VPPAVPGVTF LSGGQSEEEA SLNLNAINRC PLPRPWALTF</p> <p>301 SYGRALQASA LNAWRGQRDN AGAATEEFIK RAEMNGLAAQ GRYEGSGDGG</p> <p>351 AAAQSLYIAN HAY</p>
b)	<p>1 MPGGLLLGDE APNFEANTTI GRIRFHDFLG DSWGILFSHP RDFTPVCTTE</p> <p>51 LGRAAKLAPE FAKRNVKLIA LSIDSVEDHL AWSKEAKQCF PKGVFTKELP</p> <p>101 SGKKYLRYTP QP</p>
c)	<p>1 MATHGQTCAR PMCIPPSYAD LGKAARDIFN KGFGFGLVKL DVKTKSCSGV</p> <p>51 EFSTSGSSNT DTGKVTGTLE TKYKWCEYGL TFTEKWNTDN TLGTEIAIED</p> <p>101 QICQGLKLTF DTTFSPNTGK KSGKIKSSYK RECINLGCDV DFDFAGPAIH</p> <p>151 GSAVFGYEGW LAGYQMTFDS AKSKLTRNNF AVGYRTGDFQ LHTNVNDGTE</p> <p>201 FGGSIYQKVC EDLDTSVNLA WTSGTNCTRF GIAAKYQLDP TASISAKVNN</p> <p>251 SSLIGVGYTQ TLRPGVKLTL SALVDGKSIN AG</p>

Figure 4. Mascot search results for a) aldolase C, b) Prx-cis and c) VDAC respectively that the Matched peptides of aldolase C (6 items), Prx-cis(3 items) and VDAC (5 items) are shown in **Bold Red**.

Table 1. The amounts of the volume of the labeled spots are tabulated

ID	Normal	BCC	fliker	Mass Spectrometry
1	10778 ± 35.2	9611 ± 32.6	TTR	
2	8046 ± 25.3		Aldolase c	Aldolase c
3	6695 ± 12	6277 ± 16.9	Apo poss	
4	9426 ± 16		FGG	
5	5574 ± 23.6	4779 ± 18.6	Ceruloplasmin	
6	3244 ± 12.8		Unknown	
7	4659 ± 21.6		Prx-cis	Prx-cis
8	3274 ± 19		Protrombin	
9	3697 ± 12.5	4736 ± 21.5	C3b	
10	8416 ± 25.7		VDAC	VDAC
11	4308 ± 18.4		LRG	

and VDAC, a small abundant protein found in all eukaryotic kingdoms, is a class of protein ion channel that is located on the outer mitochondrial membrane and forms a voltage-gated pore when incorporated into planar lipid bilayers. VDAC is also the binding site of the metabolic enzymes hexokinase and glycerol kinase to the mitochondrion in what may be a significant metabolic regulatory interaction²². VDAC regulates the activity of BAK and provides a connection between mitochondrial physiology and the core apoptotic pathway²³⁻²⁵. Mitochondrial transmembrane carrier deficiencies are a recently discovered group of disorders, which belong to the so-called mitochondriocytopathies. Expression in brain, placenta, lung, and kidney is lower than other tissues. Patient studies have shown that cultured skin fibroblasts may not be a reliable alternative for skeletal muscle in screening for human mitochondrial carrier defects²⁶. As shown in figure 3, C3b had a higher expression in cancer cell than normal. Our findings indicated the association of C3b in BCC patient. C3b binds to the cell surface for opsonization and activation of the alternate pathway²⁷. Sayama K et al, performed immunohistochemical studies to establish the distribution of membrane cofactor protein (MCP; CD46), decay-accelerating (DAF; CD55) and homologous restriction factor (HRF20; CD59), in normal skin appendages, and in benign and malignant skin neoplasms. At least two of these regulators were detected on normal eccrine glands, apocrine glands and sebaceous glands. They were also found in basal cell carcinoma. Although there were slight differences in their distribution, these regulators were found in all examined cells, indicating that they were essential factors in human skin as well as other organs and

neoplasms for preventing autologous complement attack²⁸. Ceruloplasmin, a plasma antioxidant that has been proposed to function in copper transport, oxidation of organic amines, iron(II) oxidation and the regulation of cellular iron levels, catechols, radical scavenging and other antioxidant processes²⁹ significantly decreases in the BCC group compared to controls³⁰. Our finding suggested that BCC altered the expression of C3b and ceruloplasmin as indicated. Such biological variances and differences in gene expression are used to describe cancers and other diseases^{31,32}. However, it can be concluded that alteration of gene expression induced by different pathways in cancer cells due to the alteration in the expression of other factors leads to BCC. Gene expression alteration in BCC can be monitor by proteomics. Mapping of the new biomarkers can lead to identification of the mechanism and pathway of the disease. This study also provided feasibility for determining some diagnostic biomarkers and also drug targets in patients. To summarize, not only C3b with up-regulation can be assumed as a biomarker, but also aldolase C, FGG, unknown protein, Prx-cis, Protrombin, VDAC and LRG proteins with no expression can be introduced as new biomarkers in BCC patients. However, it is necessary to conduct further experiments. To be more accurate, it is suggested that these biomarkers should be analyzed in the mucous secretions and blood.

ACKNOWLEDGMENT

The financial support from skin research center and proteomic research center of Shahid Beheshti University of Medical Sciences is gratefully acknowledged.

REFERENCES

- Habif TP. *Clinical Dermatology* (4th ed). St Louis, Mosby Inc; 2004.
- Abeloff MD, Armitage JO, Niederhuber JE, et al. *Clinical Oncology* (3rd ed). Orlando; Churchill Livingstone; 2004.
- Johnson RL, Rothman AL, Xie J, Goodrich LV, Bare JW, Bonifas JM, et al. Human homolog of patched, a candidate gene for the basal cell carcinoma syndrome. *Science* 1996;272:1668-71.
- Lam CW, Xie J, To KF, Ng HK, Lee KC, Yuen NW, et al. A frequent activated smoothened mutation in sporadic basal cell carcinomas. *Oncogene* 1999;18:833-6.
- Wikonkal NM, Berg RJ, van Haselen CW, Horkay I, Remenyik E, Begany A, et al. bcl-2 vs p53 protein expression and apoptotic rate in human nonmelanoma skin cancers. *Arch Dermatol* 1997;133:599-602.
- Tojo M, Mori T, Kiyosawa H, Honma Y, Tanno Y, Kanazawa KY, et al. Expression of sonic hedgehog signal transducers, patched and smoothened, in human basal cell carcinoma. *Pathol Int* 1999;49:687-94.
- Suiqing C, Min Z, Lirong C. Overexpression of phosphorylated-STAT3 correlated with the invasion and metastasis of cutaneous squamous cell carcinoma. *J Dermatol* 2005;32:354-60.
- Kazemi Noureini S, Ziaee A, Rastegar-Jazii F, et al. Telomerase activity in Iranian patients with esophageal squamous cell carcinoma, *Med J Islam Repub Iran* 2004; 18:147-52.
- Zhou G, Li H, De Camp D, Chen S, Shu H, Gong Y, et al. 2D differential in-gel electrophoresis for the identification of esophageal scans cell cancer-specific protein markers. *Mol Cell Proteomics* 2002;1:117-24.
- Sasse J, Gallagher SR. Staining proteins in gels. *Curr Protoc Immunol* 2004;Chapter 8:Unit 8.9.
- Larsen MR, Cordwell SJ, Roepstorff P. Graphite powder as an alternative or reversed-phase material for desalting and concentration of peptide mixtures prior to matrix-assisted laser desorption/ionization-mass spectrometry. *Proteomics* 2002;2:1277-87.
- Cavalieri D, Townsend JP, Hartl DL. Manifold anomalies in gene expression in a vineyard isolate of *Saccharomyces cerevisiae* revealed by DNA microarray analysis. *Proc Natl Acad Sci USA* 2000;97:12369-74.
- Sandberg R, Yasuda R, Pankratz DG, Carter TA, Del Rio JA, Wodicka L, et al. Regional and strain-specific gene expression mapping in the adult mouse brain. *Proc Natl Acad Sci USA* 2000;97:11038-43.
- Oleksiak MF, Churchill GA, Crawford DL. Variation in gene expression within and among natural populations. *Nat Genet* 2002;32:261-6.
- Jin W, Riley RM, Wolfinger RD, White KP, Passador-Gurgel G, Gibson G. The contributions of sex, genotype and age to transcriptional variance in *Drosophila melanogaster*. *Nat Genet* 2001;29:389-95.
- Enard W, Khaitovich P, Klose J, Zöllner S, Heissig F, Giavalisco P, et al. Intra- and interspecific variation in primate gene expression patterns. *Science* 2002;296: 340-3.
- Hsieh WP, Chu TM, Wolfinger RD, Gibson G. Mixed-model reanalysis of primate data suggests tissue and species biases in oligonucleotide-based gene expression profiles. *Genetics* 2003;165:747-57.
- Soufir N, Molès JP, Vilmer C, Moch C, Verola O, Rivet J, et al. P16 UV mutations in human skin epithelial tumors. *Oncogene* 1999; 23;18:5477-81.
- Saridaki Z, Liloglou T, Zafiroopoulos A, Koumantaki E, Zoras O, Spandidos DA. Mutational analysis of CDKN2A genes in patients with squamous cell carcinoma of the skin. *Br J Dermatol* 2003; 148:638-48.
- Masters CJ, Reid S, Don M. Glycolysis--new concepts in an old pathway. *Mol Cell Biochem* 1987;76:3-14.
- Walther EU, Dichgans M, Maricich SM, Romito RR, Yang F, Dziennis S, et al. Genomic sequences of aldolase C (Zebirin II) Direct lacZ expression exclusively in non-neuronal cells of transgenic mice. *Proc Natl Acad Sci USA* 1998;95: 2615-20.
- Hoogenboom BW, Suda K, Engel A, Fotiadis D. The supramolecular assemblies of voltage-dependent anion channels in the native membrane. *J Mol Biol* 2007;370: 246-55.
- Blachly-Dyson E, Baldini A, Litt M, McCabe ER, Forte M. Human genes encoding the voltage-dependent anion channel (VDAC) of the outer mitochondrial membrane: mapping and identification of two new isoforms. *Genomics* 1994;20:62-7.
- Blachly-Dyson E, Zambronicz EB, Yu WH, Adams V, McCabe ER, Adelman J, et al. Cloning and functional expression in yeast of two human isoforms of the outer mitochondrial membrane channel, the voltage-dependent anion channel. *J Biol Chem* 1993;268:1835-41.
- Cheng EH, Sheiko TV, Fisher JK, Craigen WJ, Korsmeyer SJ. VDAC2 inhibits BAK activation and mitochondrial apoptosis. *Science* 2003;301:513-7.
- Huizing M, Ruitenbeek W, van den Heuvel LP, Dolce V, Iacobazzi V, Smeitink JA, et al. Human mitochondrial transmembrane metabolite carriers: tissue distribution and its implication for mitochondrial disorders. *J Bioenerg Biomembr* 1998;30:277-84.
- Goldman AS. The immune system of human milk: antimicrobial, antiinflammatory and immunomodulating properties. *Pediatr Infect Dis J* 1993;12: 664-71.
- Sayama K, Shiraishi S, Miki Y. Distribution of complement regulators (CD46, CD55 and CD59) in skin appendages, and in benign and malignant skin neoplasms. *Br J Dermatol* 1992;127:1-4.
- Healy J, Tipton K. Ceruloplasmin and what it might do. *J Neural Transm* 2007;114:777-81.
- Vural P, Canbaz M, Selçuki D. Plasma antioxidant defense in actinic keratosis and basal cell carcinoma. *J Eur Acad Dermatol Venereol* 1999;13:96-101.
- Kunz WS. Different metabolic properties of mitochondrial oxidative phosphorylation in different cell types - important implications for mitochondrial cytopathies. *Exp Physiol* 2003;88:149-54
- Elek J, Park KH, Narayanan R. Microarray-based expression profiling in prostate tumors. *In Vivo* 2000;14:173-82.