

A novel adsorbent for heavy metal remediation in aqueous environments

¹*C. M. Zvinowanda; ¹J. O. Okonkwo; ²P. N. Shabalala; ³N. M. Agyei

¹Department of Environmental Water and Earth Sciences, Tshwane University of Technology, South Africa

²AER (Environmental Business Services Section), SGS Group, Johannesburg, South Africa

³Chemistry Department, University of Limpopo, MEDUNSA, South Africa

Received 10 February 2009; revised 14 April 2009; accepted 17 May 2009; available online 1 June 2009

ABSTRACT: The objective of this study was to investigate the possibility of using maize tassel as an alternative adsorbent for the removal of chromium (VI) and cadmium (II) ions from aqueous solutions. The effect of pH, solution temperature, contact time, initial metal ion concentration and adsorbent dose on the adsorption of chromium (VI) and cadmium (II) by tassel was investigated using batch methods. Adsorption for both chromium (VI) and cadmium (II) was found to be highly pH dependent compared to the other parameters investigated. Obtained results gave an adsorption capacity of 79.1 % for chromium (VI) at pH 2, exposure time of 1h at 25 °C. Maximum capacity of cadmium of 88 % was obtained in the pH range of 5-6 at 25 °C after exposure time of 1 h. The adsorption capacities of tassel for both chromium (VI) and cadmium (II) were found to be comparable to those of other commercial adsorbents currently in use for the removal of heavy metals from aqueous wastes. These results have demonstrated the immense potential of maize tassel as an alternative adsorbent for toxic metal ions remediation in polluted water and wastewater.

Keywords: Adsorption capacity; Batch studies; Energy dispersive x-ray; Fourier transform infrared; Maize tassel

INTRODUCTION

A heavy metal is a metal of relatively high specific gravity greater than 5 or high atomic weight, one that is poisonous like lead, mercury, chromium and cadmium (Bailey *et al.*, 1999; Lakatos *et al.*, 2002). Chromium and cadmium have been selected in this study because of their inherent toxicity to most organisms (Merroun *et al.*, 1998; Wan Ngah and Hanafiah, 2008). These metals are major pollutants in South Africa's water resources due to their use in many industries, such as metal plating, mining operations and tanneries. Some metals associated with these activities are lead, mercury, cadmium and chromium (Abdel-Ghani *et al.*, 2007; Abia and Igwe, 2005; Bailey *et al.*, 1999; Dang *et al.*, 2009; Zvinowanda *et al.*, 2009b).

Cr (III) is essential trace element needed for glucose metabolism in humans, plants and animals. It is relatively innocuous and immobile when compared to Cr (VI) compounds. Cr (VI) moves rapidly through soils and aquatic environments and is a strong oxidizing agent capable of being absorbed through the skin. The maximum concentration limit for chromium (VI) for

discharge into inland surface waters is 0.1 mg/L and in potable water is 0.05 mg/L (Dubey and Krishna, 2007). The major sources of Cd (II) and Cr (VI) compounds are ferrochrome processing and metal plating industries (Álvarez-Ayuso and García-Sánchez, 2007; Amuda *et al.*, 2007; Dakkiy *et al.*, 2002; Gupta *et al.*, 1999).

Because of the high positive charge of Cr (VI), it is hydrolysed to form oxo-anions, CrO_4^{2-} , HCrO_4^- and $\text{Cr}_2\text{O}_7^{2-}$ depending on the pH of the media (Mohan and Pittman, 2006). At low pH and high chromium (VI) concentration, it exists predominantly as dichromate ($\text{Cr}_2\text{O}_7^{2-}$); while at pH greater than 6.5, Cr (VI) exists as a chromate (CrO_4^{2-}). At pH less than 2, the HCrO_4^- is the dominant species. Acute exposure to Cr (VI) causes nausea, diarrhoea, liver and kidney damage, dermatitis, internal haemorrhage and respiratory problems (Singh *et al.*, 2007). Inhalation may cause acute toxicity, irritation and ulceration of the nasal septum and respiratory sensitisation (asthma). Injection may affect kidney and liver functions. Skin contact may result in systematic poisoning damage or even severe burns, and interference with the healing of cuts or scrapes (Jusoh *et al.*, 2007; Naiya *et al.*, 2009; Wang *et al.*, 2009). If not

*Corresponding Author Email: zvinowandacm@tut.ac.za
Tel.: +2712 382 6281; Fax: +2712 382 6354

treated properly this may lead to ulceration and severe chronic allergic contact dermatitis. Eye exposure may cause permanent damage (Cohen, 2006).

Cadmium in nature exists mainly in the +2 oxidation state, which gives stable compounds. The major sources of Cd (II) in most water bodies include mining through acid mine drainage and battery manufacturing industries. Cadmium is a non-essential element and is one of the most hazardous trace elements, which is classified as a "priority metal" from the standpoint of potential hazard to human health and plant life (Singh *et al.*, 2007; Vandecasteele *et al.*, 2007; Zhu *et al.*, 2007). The most crucial problem of heavy metal pollution is that the metals and their speciation products are non bio-degradable hence tend to accumulate until above lethal concentration levels (LC). The level of chromium and cadmium in discharged wastewater should be reduced, or recycled if possible. Several technologies have been developed to remove heavy metals and their speciation products from wastewater or contaminated water in order to make water usable. However, the literature is still insufficient to cover this problem and more work and investigations are needed to deal with other locally available and cheap adsorbents to eliminate Cr (VI) and Cd (II) from industrial wastewater with different compositions and characteristics (Babel and Kumiawan, 2004; Kurniawan *et al.*, 2006; O'Connell *et al.*, 2008; Malakootian *et al.*, 2009).

The minimisation of the environmental impact of transition and heavy metals in aquatic systems and leachates requires the application of different chemical processes such as precipitation, ion-exchange, adsorption, electrochemical precipitation, membrane filtration, reverse osmosis, solvent extraction, electro-dialysis, sedimentation, flotation, phyto-remediation, electro-coagulation, electro-kinetic extraction, cementation, evaporation, dilution, stripping, flocculation and chelation (Doyurum and Celik, 2006; Lakatos *et al.*, 2002; Karbassi *et al.*, 1994). Chemical precipitation has been the most used method from the list (Mohan and Pittman, 2006).

Currently, activated carbon is the major material used in the extraction of gold from its aqueous solutions. However, as already referred to, the use of CAC in heavy metal uptake from aqueous waste is constrained by the high cost of this material which can not be financially compensated, as in gold processing. In recent years, number of agricultural materials such as palm kernel husk, modified cellulosic material, corn cobs, residual lignin,

wool, apple residues, olive mill products, polymerized orange skin, banana husk, pine bark, sawdust, coals, etc. have been reported for their removal of toxic metals from aqueous solutions (Bailey *et al.*, 1999; Doyurum and Celik, 2006; Lakatos *et al.*, 2002; Srivastava *et al.*, 1986). However, most of these agricultural materials investigated so far have limitations in terms of efficiency and their adsorption capacities for heavy metals. The limitations of some of the aforementioned technologies which include high cost, unavailability, generation of large volumes of secondary waste and poor removal efficiency has necessitated the continued search for new adsorbent materials. Tassel is an agricultural material which can be investigated for its possible in adsorption technology. The application of agricultural materials in wastewater treatment has been reported (Doyurum and Celik, 2006; Kumar, 2006; Lakatos *et al.*, 2002; Mohan and Pittman, 2006; Namasiyayam and Yamuna, 1995). From the more than hundred agricultural materials reported, no studies have been carried out on tassel except reports from this group (Zvinowanda *et al.*, 2008a, b; 2009a, b). Tassel is found in large quantities from maize producing countries such as South Africa, Mexico, Argentina and USA. In the present study, an attempt has been made to investigate the possibility of using maize tassel as sustainable adsorbent for toxic metal remediation in aqueous environments under different experimental conditions.

The study was carried out at Arcadia Campus, in the Department of Environmental Water and Earth Sciences, Faculty of Science, TUT, Pretoria in 2007 and most of the experimental work was performed in the Environmental Chemistry Research Laboratory.

MATERIALS AND METHODS

For both chromium and cadmium, stock solutions were prepared by dissolving 3.734 g of $K_2CrO_4 \cdot 6H_2O$ and 2.7442 g of $Cd(NO_3)_2 \cdot 4H_2O$, respectively in 1000 mL volumetric flasks and made up to the mark with deionised water. All the required working solutions were prepared by diluting the stock solutions with deionised water.

The maize tassel used in the present study was prepared by crushing air dried tassels (collected from TUT farm) by hand to reduce into smaller particles. The smaller particles were then dried in the oven at 100 °C for 24 h to reduce the moisture content. The material was then milled into a mixture of finer particles with different particle diameters. The coarse powder was further fractionated into different particle sizes using

analytical sieves. The most common particle fractions were A (50-150 μm), B (150-300 μm) and C (300-500 μm) diameters. In this study, fraction A (50-150 μm) was used throughout the experiments. Fourier transform infrared (FTIR) and energy dispersive x-ray (EDX) spectra of the adsorbent were recorded on Perkin- A Perkin-Elmer GX2000 FTIR spectrometer adapted with Perkin-Elmer auto image microscope system and JSM 5800LV, Vantage 6, analytical systems with 130 eV detector (JEOL, Tokyo, Japan), respectively. Samples for FTIR were prepared by diluting the adsorbent to 5 % in KBr and cast in disks for analysis. Analysis of standards and simulated samples was done using an AA140 atomic absorption spectrometer, linked to a HP Compaq with an HPL1906 monitor and mine waste samples were analysed using ICP-OES.

Batch studies

Batch experiments for chromium (VI)

Batch experiments were carried out using a series of erlenmeyer flasks of 100.0 mL capacity. Batch experiments were conducted to investigate the effects of pH, contact time, initial Cr (VI) and Cd (II) concentrations, adsorbent dose and temperature on adsorption of the material ions from its solutions. All the adsorption experiments were carried out at room temperature ($25 \pm 2^\circ\text{C}$) except where the effect of temperature was being investigated. The initial pH was adjusted with 1M HNO_3 or 1M NaOH solutions.

The effect of pH on adsorption of metal ions

The effect of pH on adsorption was investigated in the pH range 2.0-10 at 25°C . The initial pH of the Cr (VI) solution was adjusted from pH 3 to the desired value by adding few drops of 1.0 M HNO_3 to get a pH 2 solution. Solutions of pH 4-10 were prepared by adding few drops of 1.0 M NaOH solutions to the pH 3 solution. The same procedure was repeated for Cd (II) (in pH range 3-6).

The effect of metal ion concentration on adsorption

For kinetic studies, 1.0 g of the adsorbent was shaken with 100.0 mL of Cr (VI) solution of varying concentrations (25, 150, 300 and 400 mg/L) in different 100.0 mL Erlenmeyer flasks. The contents were continuously agitated in a temperature controlled water bath with a shaker at $100 \pm \text{rpm}$. At the end of the pre-determined time intervals (60 min), the adsorbent was filtered and Cr (VI) concentration in the filtrate was determined using FAAS. The adsorbed amount was

determined from the difference in the initial and residual concentrations of Cr (VI) in the liquid phase. The same procedure was repeated for Cd (II) samples.

The effect of adsorbent dose on metal ion adsorption

Adsorption dose experiments were also performed with 100 mL of 150 mg/L Cr (VI) solution with the following adsorbent masses 0.2, 0.4, 0.6, 0.8, 1.0, 1.2, 1.4, 1.6, 1.8 and 2.0 g at 25°C . The pH of the solution was adjusted to optimum pH 2. After the established contact time (1h) was reached, the suspension was filtered and filtrate analysed for unadsorbed metal ion concentrations. The adsorbed metal ions were obtained by the difference. The same procedure was repeated for Cd (II), but at optimum pH 6.

The effect of contact time on the removal of metal ions

Experiments for the effect of time were also performed following the same procedure, as described earlier, but at a fixed pH 2 for Cr (VI) fixed temperature ($25 \pm 2^\circ\text{C}$), fixed concentration (150 mg/L) and adsorbent dose (1.0 g/100 mL). Six sets of samples prepared in triplicate were placed in a water bath with a shaker set at 100rpm. After every 30 min, three samples were removed and filtered immediately and the filtrate was analysed. Cd (II) was analysed using the same procedure at its optimum pH 6.

The effect of solution temperature on metal adsorption

Lastly, experiments for the reaction temperature was also performed following the same procedure, with all other parameters fixed, but at different temperature ranges, 25, 35, 45, 55, 60, 70, 80 and 100°C . Each analysis was done in triplicate in order to get accurate results for both Cr (VI) and Cd (II).

Data quality assurance

Blanks were prepared for each experimental parameter: pH, contact time, solution temperature, metal ion concentration and adsorbent dose. The prepared blanks were treated exactly the same way the samples were treated. For pH, contact time, adsorbent dose and temperature blanks were subjected to their average values. During the analysis, the instrument FAAS, was programmed in such a way that a blank measurement was made before each sample measurement. The actual concentration of non adsorbed metal ions, C_i , was calculated using the equation:

$$C_i = C_m - C_{blk} \quad (1)$$

Where, C_t = true concentration of Cr(VI) or Cd(II) still present in solution after reaction; C_m = measured Cr(VI) or Cd(II) present in solution; C_{blk} = blank concentration.

Statistical analysis

All experiments were setup in triplicates and relative standard deviation (RSD) was calculated for each result. Any triplicate set with an RSD greater than 5 % was rejected and such experiments were repeated to get a better reliability.

RESULTS AND DISCUSSION

Calculations

When maize tassel powder was tested for its ability to adsorb Cr (VI) and Cd (II) ions from aqueous solution, initial pH of 2 was used for the most experiments. The effects of the following experimental parameters on adsorption which included initial concentration, adsorbent dosage, pH, temperature and the exposure time were studied. All the investigations were carried out as batch experiments for the two metal ions. The uptake or adsorption percent of Cr (VI) and Cd (II) was calculated from the following equation:

$$\% \text{ Adsorption (uptake \%)} = ((C_o - C_f)/C_o) \times 100 \quad (2)$$

Where C_o = the initial concentrations (mg/L); C_f = final concentrations (mg/L). The adsorption capacity of Cr (VI) or Cd (II) is the concentration of Cr (VI) or Cd (II)

on the adsorbent mass and was calculated based on the mass balance principle,

Where:

$$q_m (\text{adsorption capacity}) = (C_o - C_f) \times V/m \quad (3)$$

In which, q_m = amount of Cr (VI) or Cd (II) per dry weight of tassel; V = the volume of reaction mixture (L); m = the mass of adsorbent used (g); C_o = the initial concentrations (mg/L) and C_f = final concentrations (mg/L)

FTIR and EDX analysis of adsorbent

The FT-IR spectrum (Fig. 1) of tassel was used to identify functional groups present on the maize tassel that could be responsible for uptake of heavy metal species. The spectrum of the adsorbent was measured within the range of 4000-600/cm wave number. The absorption peak around 3466/cm indicates the existence of O-H groups. The peaks observed at 2921/cm can be assigned to stretching vibration of the C-H group. The absorption peaks at 1734, 1643 and 1036/cm are associated with the presence of C=O, C=C and C-O, respectively (Cardenas and Miranda, 2004; Chauhan *et al.*, 2006). The EDX spectrum obtained for tassel is shown in Fig. 2. The elemental distribution of tassel shows high percentage levels of Al, Mg and Si elements with potential to form organometallic compounds which might be responsible for the tough elastic properties exhibited by the tassel powder.

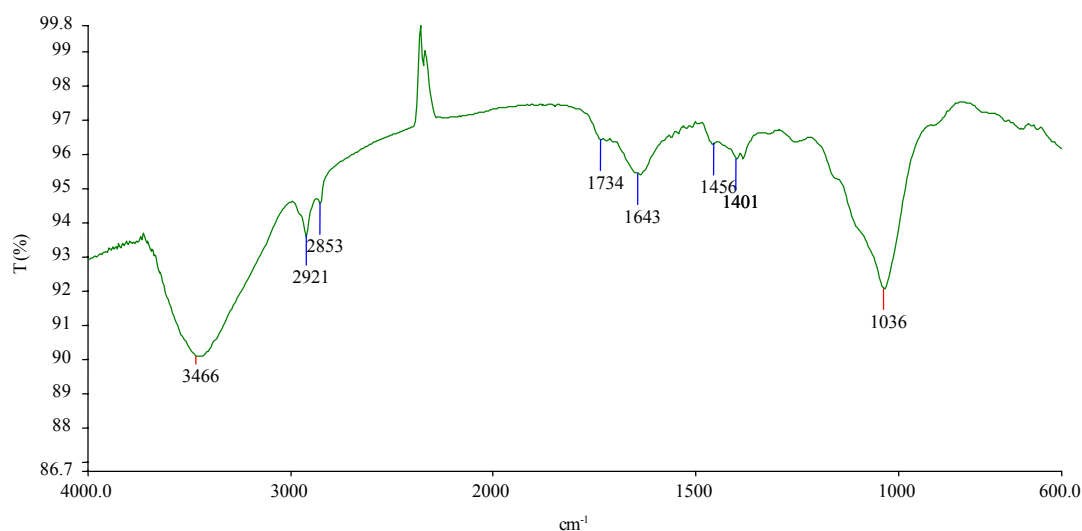


Fig. 1: FT-IR spectrum of tassel powder before use

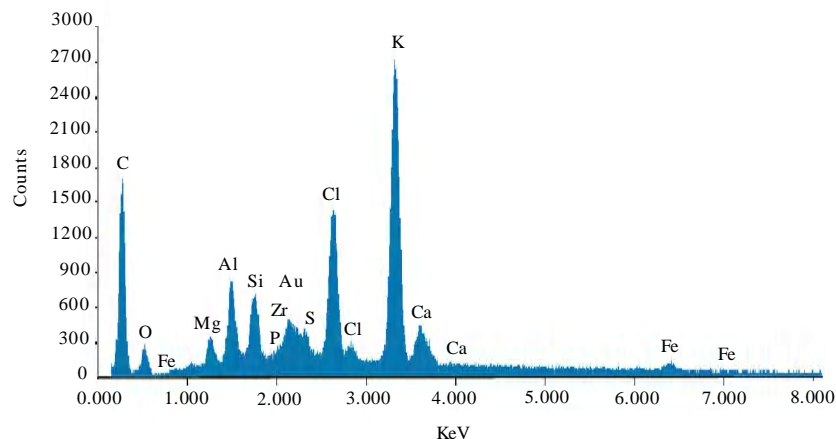


Fig. 2: EDX spectrum of tassel powder before use

Adsorption of Cr (VI)

Effects of Cr (VI) concentration

The effects of varying Cr (VI) concentration on adsorption capacity while the other four parameters were kept constant is shown in Fig. 3. The adsorption of Cr (VI) ions by the adsorbent initially increased rapidly with increasing Cr (VI) concentration and slowed down when Cr (VI) concentration reached 300 mg/L (Fig. 3). The initial rapid increase in the uptake of Cr (VI) can be attributed to the interactions between the metal ions and the active sites of the adsorbent. At higher concentrations more Cr (VI) ions are left un-adsorbed in solution due to the saturation of binding sites. The graph levels off between 400 and 500 mg/L due to total saturation of the binding sites of the tassel. From similar studies conducted by Malkoc *et al.* (2006), the adsorption of Cr (VI) on pomace at 25 °C gave q_m values of 6.10, 10.34, 10.80 and 2.12 mg/L for solutions of concentrations 50, 100, 150 and 200 mg/L, respectively. These results are similar to the observations made in this studies where the adsorption capacity of tassel for Cr (VI) was in the range 1.8 – 10 mg/g. The work by Dubey and Krishna (2007), found that the maximum adsorption capacity of most investigated biosorbents were in the range of 1.6 mg/g – 13.4 mg/g for unmodified biosorbents.

Effects of pH on metal ion adsorption

The effects of pH on the adsorption of Cr (VI) is presented in Fig. 4. The pH of the aqueous solution is an important operational parameter in the adsorption

process. This is because it affects the solubility of the metal ions concentration of the counter ions on the functional groups of the adsorbent and the degree of ionization of adsorbate during reaction (Amuda *et al.*, 2007). The pH was varied from 1 to 9, while the other operational parameters (adsorbent dosage, agitation time, initial ion concentration and reaction temperature) were kept at the optimum. Temperature, agitation speed, adsorbent dose and contact time were kept at 25 °C, 100 rpm, 10.0 g/L and 1 h, respectively. Generally, the adsorption capacity of tassel on Cr (VI) decreased with increase in solution pH. However, there was some slight increase in adsorption between pH 6-8.

From Fig. 4, it can be seen that there is a sharp decrease of adsorption from pH 2 reaching the minimum at pH 5. There is a slight increase of adsorption thereafter to pH of about 8, a slight decrease followed by a marginal increase and finally a fall. The sorption capacity of Cr (VI) at pH 2.0 by tassel was 4.5 mg/g, which reduced to 1.0 mg/g at pH 5.0. Similar studies using waste pomace of olive oil factory (WPOOF) gave adsorption capacity of 8.5 mg/g and 2.7 mg/g at pH of 2.0 and 5.0, respectively (Malkoc *et al.*, 2006). The adsorption process is explained as follows: at low pH, there is a large number of H^+ ions, which in turn neutralise the negatively charged adsorbent surface thereby reducing hindrance to the diffusion of dichromate ions (Mohan and Pittman, 2006). Hence, the sorption increases with increase in the acidity of the solution. As the pH increases, the concentration of OH^- ions increases and overall charge on the adsorbent surface becomes negative which

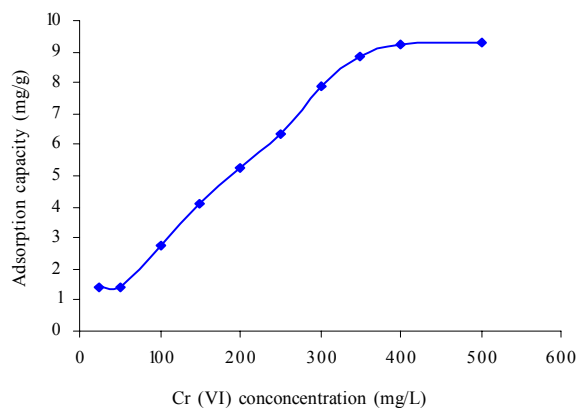


Fig. 3: Effect of initial concentration on adsorption capacity of tassel

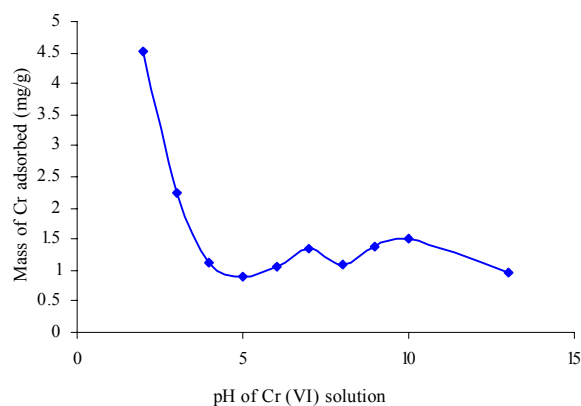


Fig. 4: Effect of pH on the adsorption of Cr (VI) on the adsorbent

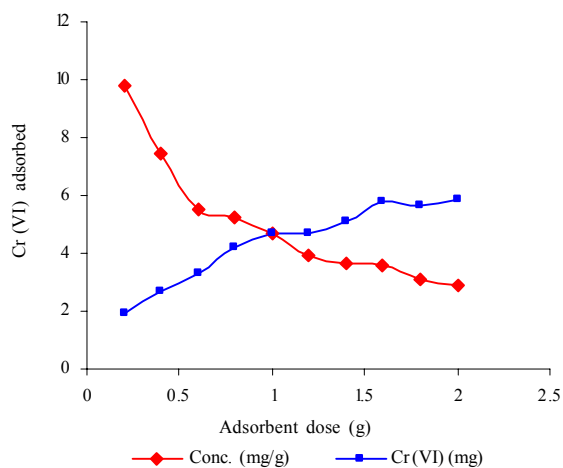


Fig. 5: Effect of adsorbent dose on Cr (VI) adsorption

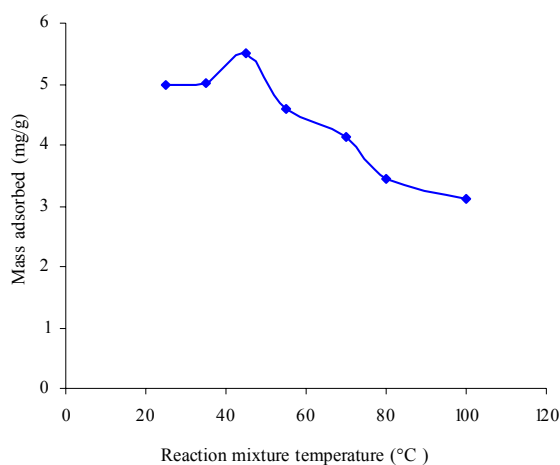


Fig. 6: Effect of temperature on Cr (VI) adsorption

causes hindrance in the sorption of negatively charges Cr (VI) ions like $\text{Cr}_2\text{O}_7^{2-}$, CrO_4^{2-} and HCrO_4^- . This results in decreased sorption of Cr (VI) at high pH (Mohan and Pittma, 2006). The other possible mechanism of adsorption of Cr (VI) is through the oxidation of the adsorbent surface to groups like carboxylic (COOH), carbonyl (C=O) and hydroxyl (OH) groups. Cr (VI) is then reduced to Cr (III) which is positively charged and will be attracted to negatively charged functional groups generated on the surface of adsorbent by oxidation.

Effect of adsorbent concentration/ dosage

The removal of chromium(VI) by tassel at different adsorbent doses (0.2-2.0 g in 100 mL i.e 2-20 g/L) for the chromium concentration 150 mg/L was studied. The other parameters were fixed as follows: contact time: 1h, agitation speed: 100rpm and an optimum pH: 2. The results in Fig. 5 show that the the adsorption capacity of

Cr (VI) decreased rapidly with increase in the dose of tassel. However, conversion of adsorption capacity to metal ion uptake gave an increase in % adsorbed. These results are in agreement with studies by Malkoc *et al.*, (2006). They observed an increase in Cr (VI) uptake from 51.7 to 98.6 % as the dose concentration was increased from 5 -15 mg/L. However, the sorption efficiency showed a reverse trend to the removal percentage adsorptions. With increase in adsorbent dose from 2.0 to 20 mg/L, i.e. from 0.2 to 2.0 g of adsorbent in 100 mL of solution, the adsorption of Cr (VI) ion per unit weight of adsorption decreased from 9.8 (66.7 %) to 3.0 mg/g (33.3 %).

Effect of temperature on Cr (VI) adsorption

The adsorption of Cr (VI) from aqueous solutions at different temperatures was investigated. Samples were subjected to temperatures which ranged from 25 to

100 °C. As can be seen in Fig. 6, the adsorption capacity increased to a maximum which was reached at 45 °C and thereafter it decreased gradually. The maximum adsorption efficiency of 5.5 mg/g (36.6 %) occurred at 45 °C. From the effect of temperature studies using WPOOF conducted by Malkoc *et al.* (2006) on the adsorption of Cr (VI), it was observed that the adsorption capacity of Cr (VI) increased with temperature. This was observed in the temperature range 45 °C – 60 °C for the concentration range 50 – 200 mg/L. When the solution temperature was increased, this increased the oxidising power of the Cr (VI) ions. The ions were then reduced to Cr (III) and were bound strongly on the organic material. However, overheating might result in desorption kinetics dominating.

The effect of contact time on Cr (VI) adsorption

The effect of contact time on the adsorption of Cr(VI) from its solution is shown in Fig. 7. There is a general increase in the % adsorption of Cr (VI) with time. However, the adsorption slowed down after about 120 min. This could possibly be the time required for the equilibrium to be established. Generally, an equilibrium is established at the surface of the adsorbent after sometime or it can be instantaneous. The equilibrium uptake of Cr (VI) was about 68 %. The equilibrium was established after 120 min. They also investigated the effect of temperature on the time taken to establish equilibrium.

Effects of Cd (II) concentration

The impact of concentration on the adsorption capacity of tassel powder for Cd (II) is shown in Fig. 8. As can be seen from Fig. 8, there is a general increase in adsorption of Cd (II) up to a concentration of 300 mg/L, thereafter, the adsorption levels off, remaining almost constant. To investigate the effects of the Cd^{2+} concentration on the uptake of this metal, the process was carried out with initial Cd^{2+} concentrations between 25 and 500 mg/L. The agitation speed, pH, contact time and adsorbent dose were fixed at values of 100 ± 5 rpm, pH 3, 1h and 0.1 g. The material showed good adsorption of Cd^{2+} ions as the percentage removal of 3 – 6 % per 0.1 g tassel equivalent to the calculated ranged from 30 to 68 % per 1 g tassel. The levelling of the curve after 300 mg/L can be attributed to the saturation of adsorption active sites. From the studies done by Doyurum and Celik (2006), adsorption Cd (II) was done using olive cake. There was a general increase in Cd (II) adsorption

by olive cake and saturation was established at about 250 mg/L. These experiments were carried out at pH 4.5 at a temperature of 30 °C. An adsorption uptake of 51.4 % for Cd (II) using olive cake was achieved.

Effects of pH on Cd (II) adsorption

The impact of pH on the uptake of Cd (II) ions by tassel is shown in Fig. 9. The removal percentage of Cd^{2+} ions remained almost constant in the pH range 2-4. However, there was a rapid increase in the removal percent from pH 4 to alkaline region. This could be associated with the formation of $\text{Cd}(\text{OH})_2$ and $\text{Cd}(\text{OH})_4^-$ species which might be more attracted to the adsorbent

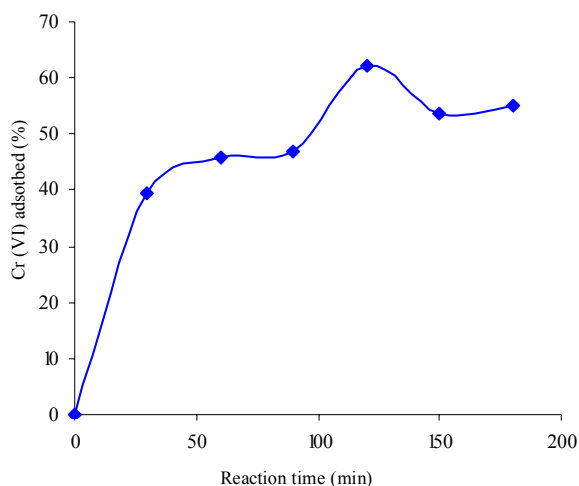


Fig. 7: Effect of contact time on Cr (VI) adsorption

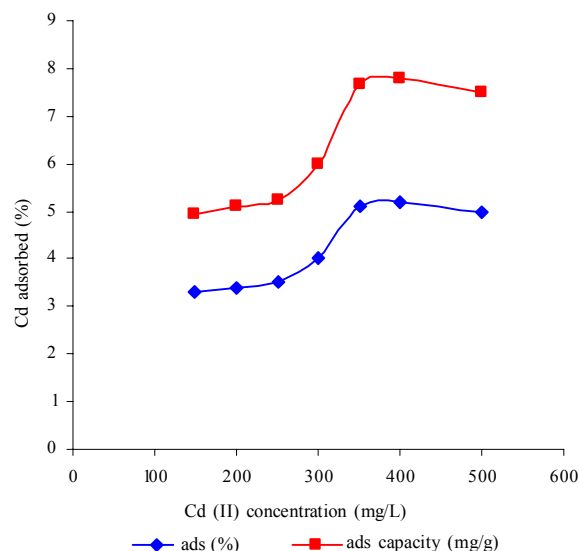


Fig. 8 Effect of Cd^{2+} ion concentrations on % uptake

rather than the positively charged Cd^{2+} ions. At lower pH, the surface of the adsorbent became positively charged as the OH^- , NH_2^- and other such groups become protonated. This will result in the increase in electrical repulsion between the adsorbent surface and the species to be adsorbed. At higher pH, the surface of the adsorbent was almost neutral and thus resulting in minimal repulsion between the adsorbent and the adsorbate. Doyurum and Celik, 2006, carried out adsorption studies of Cd (II) They varied their pH from 3.5 to 6 and 30 % uptake of Cd (II) from its solutions was obtained. Their results are significantly low compared to the uptake obtained in the present study. This could mean possibly that the adsorption properties of tassal were more influenced by pH than those of olive cake.

Effect of adsorbent concentration on Cd (II) removal/dosage

The impact of adsorbent dose on the adsorption of Cd(II) is shown in Fig. 10. From Fig. 10, it can be observed that there is a general increase in the adsorption of Cd(II) as the adsorbent dose increased. The other parameters like in previous investigations were kept constant during the contact process. Solutions of 150 mg/L, were equilibrated at 25 °C for 1 h at agitation speed of 100 rpm at pH of 2 and a mass of 0.2 g tassal was used. Not much work has been reported on the effect of adsorbent dose on Cd (II) sorption.

Effect of temperature on Cd (II) adsorption

The impact of temperature on the adsorption of Cd (II) is shown in Fig. 11. From Fig. 11, it can be deduced that the adsorption capacity of tassal on Cd (II) decreased

with increase in temperature. Temperature can have a dual effect in adsorption mechanisms. Increase in temperature of the system will result in increase in the kinetics of the adsorbate species. This means particles will travel at a faster rate to the surface to get adsorbed. However, the adsorbed species might gain enough energy from temperature of the system and get desorbed at even a faster rate than adsorption rate. From this study, it was observed that the increase in temperature resulted in decrease in removal percentage in the temperature range 25 to 65 °C (Fig. 11). However, thereafter, an increase is observed. The increase in adsorption after 65 °C could be inferred to the increase in functional groups at the surface of the adsorbent as more hydrolysis of the surface took place.

The effect of contact time on Cd (II) adsorption

The impact of contact time on adsorption of Cd (II) is shown in Fig. 3-12. A general increase in Cd (II) adsorption with contact time is observed in the initial stages and it then levelled off after about 200 min. The contact time is essential for the establishment of equilibrium during the adsorption-desorption process. From the results of this study, the maximum removal percentage of 54.9 % occurred after 150 min. There was a general increase in removal percentage from 15.7 to 54.9 % as the contact time increased from 30 to 210 min. After 210 min, the removal percentage decreased a bit to about 53 % and remain stable thereafter. Results reported by Doyurum and Celik (2006) showed that equilibrium was established after 40 min. In their study, more than 80 % uptake of Cd (II) was achieved.

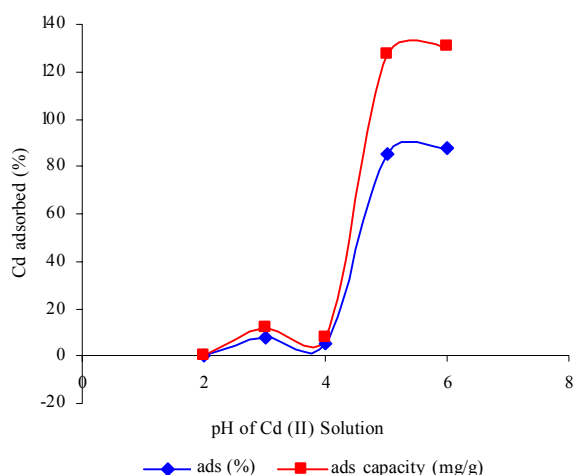


Fig. 9: Effect of pH on % removal of Cd^{2+} ions

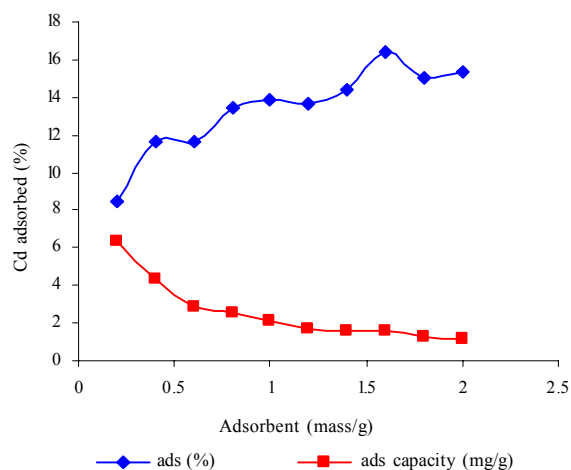


Fig. 10: Effect of adsorbent dose on % removal of Cd^{2+} ions

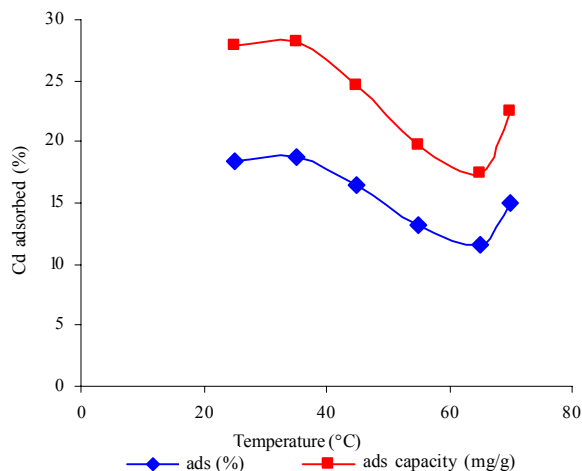
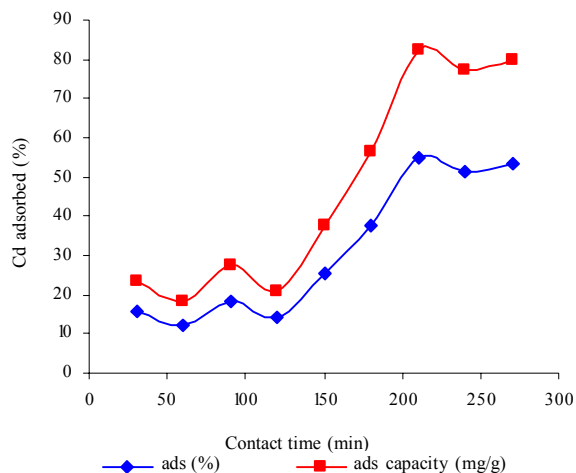
Fig. 11: Effect of temperature on Cd²⁺ ion adsorption

Fig. 12: Effect of contact time on % uptake of Cd(II)

CONCLUSION

The aim of this work was to study the dependence of adsorption on adsorbent and adsorbate (chromium (VI) and cadmium (II)) characteristics by means of batch studies. The removal of Cr (VI) from aqueous solutions strongly depended on pH of the solution, adsorbent mass, initial Cr (VI) concentration, contact time and adsorbent mass. For Cr (VI), the maximum adsorption was obtained at pH 2.0. A temperature of 45 °C gave a maxima in the temperature variation studies for Cr (VI). Maximum removal of Cr (VI) from aqueous solutions can be obtained if all of the five process parameters are optimised. The removal of Cd (II) from its aqueous solutions was also parameter dependent. However, this metal exhibited poor extraction percentage compared to Cr (VI). The adsorption of Cd (II) was most influenced by the pH of the solution. A removal of 87.4 % was observed at pH 5 at 25 °C. The adsorbent mass and initial Cd (II) concentration had minimal influence on the removal of Cd (II) from its aqueous solutions. From this study, it was observed that tassel can be used as an alternative low cost adsorbent for Cr (VI) and Cd (II) remediation for polluted water and wastewater. If tassel is to be used as a low cost adsorbent, there is a need to adjust the pH of the solution to optimal values obtained in this study. It is further recommended that chemical modification of the adsorbent be done to further improve the adsorption efficiency of the material.

REFERENCES

- Abdel-Ghani, N. T.; Hefny, M.; El-Chagbaby, G. A. F.; (2007). Removal of lead from aqueous solution using low cost abundantly available adsorbents. *Int. J. Environ. Sci. Tech.*, 4 (1), 67-73 (7 pages).
- Abia, A. A.; Igwe, J. C., (2005). Sorption kinetics and intraparticle diffusivities of Cd, Pb and Zn ions on maize cob. *Afr. J. Biotech.*, 4 (6), 509-512 (4 pages).
- Álvarez-Ayuso, E.; García-Sánchez, A., (2007). Removal of cadmium from aqueous solutions by palygorskite. *J. Hazard. Mater.*, 147 (1-2), 594-600 (7 pages).
- Amuda, O. S.; Giwa, A. A.; Bello, I. A., (2007). Removal of heavy metal from industrial wastewater using modified activated coconut shell carbon. *Biochem. Eng. J.*, 36 (2), 174-181 (8 pages).
- Babel, S.; Kurniawan, T. A., (2004). Cr (VI) removal from synthetic wastewater using coconut shell charcoal and commercial activated carbon modified with oxidizing agents and/or chitosan. *Chemosphere*, 54 (7), 951-967 (17 pages).
- Bailey, S. E.; Olin, T. J.; Bricka, R. M.; Adrian, D., (1999). A review of potentially low-cost sorbents for heavy metals. *Wat. Res.*, 33 (11), 2469-2479 (11 pages).
- Cardenas, G.; Mirand, S. P., (2004). FTIR and TGA studies of chitosan composite films. *J. Chil. Chem. Soc.*, 49 (4), 291-295 (5 pages).
- Chauhan, G. S.; Jaswal, S.; Verma, M., (2006). Post functionalisation of carboxymethylated starch and acrylonitrile based networks through amidoximation for use as ion sorbents. *Carbohydr. Poly.*, 66 (4), 435-443 (9 pages).
- Cohen, R. R. H., (2006). Use of microbes for cost reduction of metal removal from metal and mining industry waste streams. *J. Cleaner Produc.*, 14 (12-13), 1146-1157 (12 pages).
- Dakiky, M.; Khamis, M.; Manassra, A.; Mer'eb, M., (2002). The selective adsorption of chromium (VI) in industrial wastewater using low-cost abundantly available adsorbents. *J. Adv. Environ. Res.*, 6 (4), 533-540 (8 pages).
- Dang, V. B. H.; Doan, H. D.; Dang-Vu, T.; Lohi, A., (2009). Equilibrium and kinetics of biosorption of cadmium (II) and copper (II) ions by wheat straw. *Bioresour. Tech.*, 100 (1), 211-219 (9 pages).
- Doyurum, S.; Celik, A., (2006). Pb (II) and Cd (II) removal from aqueous solutions by olive cake. *J. Hazard. Mater.*, 138 (1), 22-28 (7 pages).
- Dubey, S. P.; Krishna, G., (2007). Adsorption of chromium (VI) on low cost adsorbents derived from agricultural waste material. *J. Hazard. Mater.*, 145 (3), 465-470 (6 pages).

- Gupta, V. K.; Mohan, D.; Sharma, S.; Park, K. T., (1999). Removal of chromium (VI) from electroplating industry wastewater using bagasse fly ash-a sugar industry waste material., *The Environmentalist*, 19 (2), 129-136 (8 pages).
- Jusoh, A.; Shiung, L. S.; Ali, N.; Noor, M. J. M. M., (2007). A simulation study of the removal efficiency of granular activated carbon on cadmium and lead. *Desalination*, 206 (1-3), 9-16 (8 pages).
- Karbassi, A. R.; Shankar, R. (1994). Magnetic susceptibility of bottom sediments and suspended particulates from Mulki-Pavanje River, estuary, and adjoining shelf, west coast of India. *J. Geophysic. Res.*, 99 (5), 10207-10220 (14 pages).
- Kumar, U., (2006). Agricultural products and by-products as a low cost adsorbent for heavy metal removal from water and wastewater: A review. *Sci. Res. Essay*, 1 (2), 33-37 (5 pages).
- Kurniawan, T. A.; Chan, G. Y. S.; Lo, W. h.; Babel, S., (2006). Comparison of low-cost adsorbents for treating wastewater laden with heavy metals. *Sci. Tot. Environ.*, 366 (2-3), 409-426 (18 pages).
- Lakatos, J.; Brown, S. D.; Snape, C. E., (2002). Coals as sorbents for the removal and reduction of hexavalent chromium from aqueous waste streams. *Fuel*, 81 (5), 691-698 (8 pages).
- Malakootian, M.; Nouri, J.; Hossaini, H., (2009). Removal of heavy metals from paint industries wastewater using Leca as an available adsorbent. *Int. J. Environ. Sci. Tech.*, 6 (2), 183-190 (8 pages).
- Malkoc, E.; Nuhoglu, Y.; Dundar, M., (2006). Adsorption of chromium (VI) on pomace-An olive industry waste: Batch and column studies. *J. Hazard. Mater.*, 138 (1), 142-151 (10 pages).
- Merroun, M. L.; Omar, N. B.; González-Muñoz, M. T.; Arias, J. M., (1998). *Myxococcus xanthus* biomass as adsorbent for lead. *J. Appl. Microbiol.*, 84 (1), 63-67 (5 pages).
- Mohan, D.; Pittman, C. A., (2006). Activated carbons and low cost adsorbents for remediation of tri- and hexavalent chromium from water. *J. Hazard. Mater.*, 137 (2), 762-811 (50 pages).
- Naiya, T. K.; Bhattacharya, A. K.; Das, S. K., (2009). Adsorption of Cd (II) and Pb (II) from aqueous solutions on activated alumina. *J. Coll. Interf. Sci.*, 333 (1), 14-26 (13 pages).
- Namasivayam, C.; Yamuna, R. T., (1995). Adsorption of chromium (VI) by a low cost adsorbent: Biogas residual slurry. *Chemosphere*, 30 (3), 561-578 (18 pages).
- O'Connell, D. W.; Birkinshaw, C.; O'Dwyer, T. F., (2008). Heavy metal adsorbents prepared from the modification of cellulose: A review. *Bioresour. Tech.*, 99 (15), 6709-6724 (16 pages).
- Ramos, R. L.; Rangel-Mendez, J. R.; Coronado, R. M., (1997). Adsorption of cadmium (II) from aqueous solution onto activated carbon. *Wat. Sci. Tech.* 35 (7), 205-211 (7 pages).
- Singh, C. K.; Sahu, J. N.; Mahalik, K. K.; Mohanty, C. R.; Mohan, B. R.; Meikap, B. C., (2007). Studies on the removal of Pb (II) from wastewater by activated carbon developed from Tamarind wood activated with sulphuric acid. *J. Hazard. Mater.*, 153 (1-2), 221-228 (8 pages).
- Srivastava, H. C. P.; Mathur, R. P.; Mehrotra, I., (1986). Removal of chromium from industrial effluents by adsorption on sawdust. *Environ. Tech.*, 7 (1-12), 55-63 (9 pages).
- Udy, M. J., (1956). Chromium. Reinhold publishing corporation, New York.
- Vandecasteele, B.; Quataert, P.; Tack, F. M. G., (2007). Uptake of Cd, Zn and Mn by willow increases during terrestrialisation of initially ponded polluted sediments. *Sci. Tot. Environ.*, 380 (1-3), 133-143 (11 pages).
- Wan Ngah, W. S.; Hanafiah, M. A. K. M., (2008). Removal of heavy metal ions from wastewater by chemically modified plant wastes as adsorbents: A review. *Bioresour. Tech.*, 99 (10), 3935-3948 (14 pages).
- Wang, J.; Zhang, D.; Lawson, T. R.; Bartsch, R. A., (2009). Sorption of heavy metal ions by silica gel-immobilised, proton-ionisable calyx[4]arenes. *Talanta*, 78 (2), 477-483 (7 pages).
- Zhu, C.; Luan, Z.; Wang, Y.; Shan, X., (2007). Removal of cadmium from aqueous solutions by adsorption on granular red mud (GRM). *Sepr. Purif. Tech.*, 57 (1), 161-169 (9 pages).
- Zvinowanda, C. M.; Okonkwo, J. O.; Agyei, N. M.; Forbes, P.; Mpangela, V.; Phaleng, J.; Shabalala, P. N.; Dennis, T.; Ozoemena, K. I., (2008a). Biosorption of toxic metals: The potential of maize tassel for the removal of Pb (II) from aqueous solutions. *Fresen. Environ. Bull.*, 17 (7), 814-818 (5 pages).
- Zvinowanda, C. M.; Okonkwo, J. O.; Agyei, N. M.; Shabalala, P. N., (2009a). Physicochemical characterisation of maize tassel adsorbent: Part I. Surface texture, microstructure and thermal stability. *J. Appl. Poly. Sci.*, 111 (4), 1923-1930 (8 pages).
- Zvinowanda, C. M.; Okonkwo, J. O.; Agyei, N. M.; Sekhula, M. M.; Sadiku, R., (2009b). Application of maize tassel for the removal of Pb, Se, Sr, U and V from borehole water contaminated with mine wastewater in the presence of alkaline metals. *J. Hazard. Mater.*, 164 (2-3), 884-891 (8 pages).
- Zvinowanda, C. M.; Okonkwo, J. O.; Agyei, N. M.; Shabalala, P. N., (2008b). Preparation and characterisation of biosorbents made from tassel. *Canadian J. Pur. Appl. Sci.* 2 (3), 476-480 (5 pages).

AUTHOR (S) BIOSKETCHES

Zvinowanda, C. M., Ph.D. research candidate in wastewater processing niche area, Department of Environmental, Water and Earth Sciences, Tshwane University of Technology, South Africa. Email: zvinowandacm@tut.ac.za

Okonkwo, J. O., Ph.D., Research and innovation professor, Department of Environmental, Water & Earth Sciences, Tshwane University of Technology, South Africa. Email: okonkwoj@tut.ac.za

Shabalala, P. N., B.Tech., Environmental researcher, AER (Environmental Business Services Section), SGS Group, Johannesburg, South Africa. Email: pride@ecoserv.com

Agyei, N. M., Ph.D., Senior lecturer, Department of Chemistry, University of Limpopo, Medunsa, South Africa. Email: agyei@ul.ac.za

This article should be referenced as follows:

Zvinowanda, C. M.; Okonkwo, J. O.; Shabalala, P. N.; Agyei, N. M., (2009). A novel adsorbent for heavy metal remediation in aqueous environments. *Int. J. Environ. Sci. Tech.*, 6 (3), 425-434.