

Bubble-CPAP vs. Ventilatory-CPAP in Preterm Infants with Respiratory Distress

Bahareh Bahman-Bijari*¹, MD; Arash Malekiyan¹, MD; Pedram Niknafs¹, MD,
and Mohammad-Reza Baneshi², PhD

1. Department of Pediatrics, Kerman University of Medical Sciences, Kerman, Iran
2. Department of Biostatistics, Kerman University of Medical Sciences, Kerman, Iran

Received: Jun 23, 2010; Final Revision: Nov 28, 2010; Accepted: Jan 10, 2011

Abstract

Objective: Application of Continuous Positive Airway Pressure (CPAP) in neonate with respiratory distress is associated with reduction of respiratory failure, reduced complications and mortality. Bubble CPAP (B-CPAP) and ventilator-derived CPAP (V-CPAP) are two most popular CPAP modes. We aimed to determine whether B-CPAP and V-CPAP would have different survival rate and possible complications.

Methods: This prospective clinical trial was performed on 50 preterm neonates weighing 1000-2000 gr who were admitted to the neonatal intensive care unit of Afzalipoor Hospital because of respiratory distress between June 2009 and May 2010. Patients were randomly allocated into treatment groups using minimization technique. Survival analysis was applied to estimate and compare survival rates. Duration of oxygen therapy, hospital stay as well as hospitalization costs were compared using independent sample t-test.

Findings: Estimated survival rates at 24 hours in B-CPAP and V-CPAP groups were 100% and 77% respectively. Corresponding figures at 48 hours were 100% and 71%. In addition the hospitalization cost in V-CPAP group was significantly higher than in B-CPAP group.

Conclusion: According to our results, B-CPAP was effective in the treatment of neonates who were suffering from respiratory distress and reduced the duration of hospital stay. In addition to mentioned benefits, its low cost may be the reason to use B-CPAP broadly compared with V-CPAP.

Iranian Journal of Pediatrics, Volume 21 (Number 2), June 2011, Pages: 151-158

Key Words: Continuous Positive Airway Pressure; Bubble CPAP; Ventilator-derived CPAP; Respiratory distress

Introduction

Neonatal respiratory failure is a serious clinical problem^[1-3] associated with high morbidity,

mortality, and cost^[4-6]. The major risk factor is low birth weight^[7,8], which is more prevalent among the poor, and the uninsured^[9-12]. The standard method of management for respiratory failure is

* Corresponding Author;

Address: Afzalipoor Hospital, Imam Khomeini Blvd, Postal code: 7616914111, Kerman, Iran

E-mail: bbbijari@kmu.ac.ir

© 2011 by Pediatrics Center of Excellence, Children's Medical Center, Tehran University of Medical Sciences, All rights reserved.

supportive care with mechanical ventilation and high concentration of inspired oxygen. A study in the United States reports a mechanical ventilation rate of 18 per 1,000 live births and the total cost of \$4.4 billion for treating respiratory failure^[13].

There is increasing enthusiasm for non-invasive respiratory support of preterm infants. Devices used to generate CPAP include conventional ventilators, the "bubbly bottle" system and the infant flow driver^[14]. The Infant flow driver has been shown to be a feasible device for managing respiratory distress syndrome in preterm infant^[15]. CPAP is used in infants with respiratory distress and apnea^[16,17].

CPAP supports the breathing of preterm infants in a number of ways. It splints the upper airway and reduces obstruction and apnea, assists expansion of the lungs, and prevents alveolar collapse^[14].

Underwater bubble CPAP (B-CPAP) and ventilator-derived CPAP (V-CPAP) are two of the most popular CPAP modes, and they use different pressure sources. In V-CPAP, a variable resistance in a valve is adjusted to provide resistance to the flow of air^[18]. In B-CPAP the positive pressure in the circuit is achieved by simply immersing the distal expiratory tubing in a water column to a desired depth rather than using a variable resistor^[19,20].

Lee et al^[19] demonstrated the superiority of B-CPAP as compared to V-CPAP in premature infants. Teresa et al^[21] showed that the use of B-CPAP is a potentially useful practice among very low birth weight infants with RDS.

Although these two different pressure sources for CPAP delivery have been used for three decades, surprisingly there are no large randomized trials of B-CPAP vs conventional management with mechanical ventilation, a fact that reflects the common dilemma in clinical research. Conducting a large trial too early risks failure due to both inadequate knowledge of optimal treatment strategy to design the trial correctly and lack of expertise in the use of the new technique/device^[22]. What is clear, however, is that in resource-limited settings B-CPAP is an effective and inexpensive way to provide respiratory support that appears to be at least as good as the respiratory support generated by far more expensive equipment^[23].

Whether B-CPAP has any advantages over standard CPAP remains to be determined. The objective of the present study was to compare the survival rate of neonates with respiratory failure treated with application of B-CPAP vs V-CPAP and to study any possible complications caused by these methods.

Subjects and Methods

This study was conducted at a level III neonatal care unit of Afzalipoor Hospital between June 2009 and May 2010 in Kerman University of Medical Sciences. The aim of this study was to compare the effectiveness of B-CPAP and V-CPAP in the treatment of neonates with respiratory distress syndrome. All of the patients were inborn (gestation 28 to 36 weeks).

All consecutively born preterm infants with birth weight between 1000 and 2000 grams who had respiratory distress and a Silverman-Anderson retraction score^[24] of 6 and 7 were included. Babies were excluded if there was significant morbidity apart from RDS including cardiac disease (not including patent ductus arteriosus [PDA]), congenital malformation including congenital diaphragmatic hernia, tracheoesophageal fistula, and cleft lip/palate, and babies who had either respiratory distress secondary to severe asphyxia (Apgar score ≤ 3 at 1 and 5 minute or $\text{pH} \leq 7.12$), cardiovascular or respiratory instability because of sepsis, anemia, or severe intraventricular hemorrhage (IVH) on admission.

Setting the power and type-one error at 80% and 5%, we have estimated that the total number of patients required was 50 (i.e., 25 per treatment group).

To randomly assign patients into treatment groups, the minimization technique was applied with respect to baby's gender and birth weight (≤ 1500 vs >1500 grams). By implementing this method, we balanced the gender and weight distribution in treatment groups. In both groups CPAP was implemented nasopharyngeally.

Indication for CPAP included (i) $\text{FiO}_2 > 0.4$ to maintain PaO_2 60 mmHg associated with

Archive of SID

pH<7.25; and (ii) PaCO₂ <50 mmHg^[25]. The Fisher and Paykel Bubble-CPAP (BC161, New Zealand. UK) involves a source of gas flow (6-8 L/min), an air oxygen blender (Biomed Devices Belendez. USA), humidifier (MR410, Fisher & Paykel Health Care. New Zealand), and a respiratory circuit. The expiratory hose is inserted in a bottle of water. CPAP level delivered is equivalent to the distance that the distal end of expiratory tubing is underwater, which was submerged under 5 cm of water to obtain 5 cm H₂O of CPAP in our study.

The Bear 750 PSV (Bear Medical System, Inc. US) Ventilator-derived CPAP also provided base flow of gas at a rate of 5 L/min; however, its hose was connected to the exhalation valve of the ventilator. The pressure tube was connected to the Y-piece and the pressure was adjusted at 5 cm H₂O.

CPAP was considered to be successful if the respiratory distress improved and the baby could be successfully weaned off CPAP. The criteria for weaning was absence of respiratory distress (minimal or no retractions and respiratory rate between 30 and 60 per minute) and SpO₂>90% on FiO₂ <30% and PEEP <5 cm of water. Mechanical ventilation was considered for failure of CPAP; i.e., in babies with PaO₂ <50mmHg or PaCO₂ >60 mmHg and pH<7.25 with FiO₂ >0.6; or those with clinical deterioration (increased respiratory distress) including severe retractions on PEEP >7 cm of water; or prolonged (>20 seconds) or recurrent apneas (>2 episodes within 24 hours associated with bradycardia) requiring bag and mask ventilation^[26,27].

Infant variables evaluated included birth weight, gestational age, Apgar score at 1 minute, delivery room management (oxygen, bag and mask, intubation), chest X-ray, arterial blood gas, FiO₂ requirement and treatment with surfactant (Survanta).

The main outcome of this study was survival rate. We applied survival analysis to compare the survival rate in the treatment groups at different time points. By definition the survival function is the probability of observing a survival time greater than some stated value X. This indicates that being event free all the way to the end of Xth year depends on no event in any of the preceding years, and also none in the Xth year, so this method considers aging information.

To display the results graphically, Kaplan-Meier

curves were plotted. The Log-Rank test was applied to compare survival curves across treatment groups.

We also compared treatment options in terms of duration of oxygen therapy, duration of hospital stay, and hospitalization costs. We reported the incidence of neonatal morbidities in 2 treatment groups: pneumothorax, PDA by echocardiography (Spacelabs Medical. USA), IVH by cranial ultrasonography (Accuvix10) performed by our neonatologist who was blinded to failure as an outcome which was typically performed on admission day, day 7, and when the baby failed each mode of treatment, severe IVH (grades III-IV), chronic lung disease (CLD), and trauma to nasal septum and nostrils.

Independent sample t and Chi-square tests were used to compare continuous and categorical variables between treatment groups, respectively. All analyses were performed using SPSS version 15 at a significance level of 0.05.

The study protocol was approved by the local ethical committee of Kerman University of Medical Sciences (Ethic Code: K-88-235). All parents signed informed consent forms before participating in the study. This study has been registered in Iranian Registry Clinical Trail (IRCT.ir) (Irct ID: IRCT13890208325 0N2).

Findings

As summarized in Table I, the B-CPAP and the V-CPAP groups had comparable demographic characteristics. Bubble-CPAP proved to be effective in 24 (96%) babies; only 1 baby required mechanical ventilation on the 6th day. Ventilator-derived CPAP was effective in 18 (72%) patients.

A total of 25 babies received surfactant (Survanta): 12 in B-CPAP and 13 in V-CPAP group with no significant difference. A total of 4 neonates had IVH: 1 in B-CPAP group and 3 in V-CPAP group. None of the babies developed pneumothorax. Nasal trauma was seen in 12% of patients, but this did not include trauma to septum; the only complication was minimal nostril lesions all of which had improved before discharge.

Table 1: Patient characteristics in B-CPAP and V-CPAP modes

Variables		B-CPAP(n=25)	V-CPAP(n=25)	P-value
Gender	Male	13(52%)	12(48%)	0.8
	Female	12(48%)	13(52%)	
Gestational age (wk)	<=28	1(4%)	5(20%)	0.1
	29-31	10(40%)	12(48%)	
	32-36	14(56%)	8(32%)	
Birth Weight (g)	1000-1500	10(40%)	11(44%)	0.8
	1501-2000	15(60%)	14(56%)	
Response to treatment	No (failure)	1(4%)	7(28%)	0.02*
	Yes (Survive)	24 (96%)	18 (72%)	
Duration of treatment (hr)[Mean ± SD]		39.8±38.04	49.4±33.7	0.3
Duration of hospital stay (d)[Mean ± SD]		8.9±3.4	10.6±7.3	0.3
Complications	CLD	0	1	
	PDA	1	0	
	IVH	1	3	
	Nasal trauma	3	3	

Mean treatment duration in B-CPAP was not statistically significantly different from V-CPAP (39.8h vs 49.4h). Focusing on patients who responded to treatment, the mean duration of treatment for the two groups was 35.5±31.92h and 57.5±33.99h respectively and the difference was statistically significant (P=0.04). Also, we found a significant difference between B-CPAP and V-CPAP for the mean duration of hospital stay (8.7±3.3 vs 11.9±7.8 days, respectively). The characteristics of patients who did not respond to V-CPAP are given in Table 2.

Neither sex nor birth weight influenced the response to treatment. No similar analysis was performed for the B-CPAP group since only 1 patient did not respond to the treatment applied. We also compared the survival rates between the two treatments every 12 hours (Table 3). In the

first 3 days, the estimated survival rate in the B-CPAP group was 100%.

However, in the V-CPAP group a decrease in survival rate was seen. In the first 24 hours the difference between survival rates was about 25% (100% in B-CPAP vs 77% in V-CPAP), indicating the vital importance of the first hours of management of patients. The survival rate of neonates who received V-CPAP was 59% at the end of the 3rd day and remained constant afterward (Fig 1). The Log-Rank test confirmed a significant difference between the survival curves. It should be noted that when we developed a multifactorial Cox regression to adjust the treatment effect in the presence of other variables, the model did not converge to a solution. This was because only one event occurred in the V-CPAP group.

Table 2: Patient characteristics by failure of treatment in V-CPAP group

Variables		V-CPAP		P-value
		Success (n=18)	Failure (n=7)	
Gender	Male	8(44.4%)	4(57.1%)	0.568
	Female	10(55.6%)	3(42.9%)	
Gestational age (wk)	<=28	4(22.2%)	1(14.3%)	0.33
	29-31	7(38.9%)	5(71.4%)	
	32-36	7(38.9%)	1(14.3%)	
Birth weight (g)	1000-1500	6(33.3%)	5(71.4%)	0.18
	1500-2000	12(66.7%)	2(28.6%)	

Table 3: Comparison of estimated success rate in survival

Group	12h	24h	36h	48h	60h	72h
B-CPAP	100%	100%	100%	100%	100%	100%
V-CPAP	88%	77%	77%	71%	71%	59%

The mean duration of hospital stay and treatment time were similar in the 2 treatment groups in neonates weighing <1500g (P-values =0.84 and 0.63, respectively); however, the mean duration of hospital stay and treatment time of neonates weighing >1500 g were significantly longer in the V-CPAP group (25.26 ± 17.09 h and 7.2 ± 2.6 d in B-CPAP vs 47.2 ± 30.24 h and 9.5 ± 2.9 d in V-CPAP).

The mean cost of hospitalization in the B-CPAP and V-CPAP groups was $\$947.3 \pm 726$ and $\$1436.7 \pm 934$, respectively, and the difference was significant ($P=0.04$).

Discussion

The main goal of this study was to compare the effectiveness of and complications associated with B-CPAP and V-CPAP. The role of CPAP in treating the neonatal respiratory distress was already well known. Different modalities of ventilators and

systems producing CPAP have provided opportunities to compare these methods.

Our findings showed that the failure rate associated with B-CPAP was lower than that associated with V-CPAP, which was inconsistent with the results of the study carried out by Tagare et al^[28]. Likewise, Lee^[19] showed that B-CPAP was significantly more effective than V-CPAP. On the other hand, the studies by Morley^[29] and Pillow^[30] demonstrated that B-CPAP increases the respiratory effort in the neonate more so than V-CPAP.

We observed only one single failure in the B-CPAP group in our study; we did not investigate the cause for this failure. However, in the study by Ammari^[31] the CPAP failure observed was associated with positive pressure ventilation at delivery and severe RDS. Also, Urs^[26] noted that the chance for success was limited to patients with mild to moderate RDS.

In our survey the hospital stay and treatment in neonates weighing more than 1500 g differed between the B-CPAP and V-CPAP groups and this was not shown in patients weighing less than

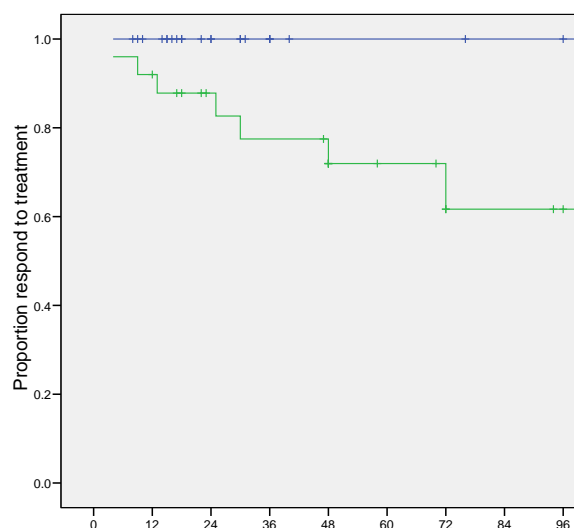


Fig. 1: Survival rate of neonates in B-CPAP (top line) and V-CPAP (bottom line)

1500 g. In another study^[32] the positive effect of B-CPAP was seen in neonates weighing more than 1250 g, and in the study by Tagare^[28] the hospital stay was longer in the B-CPAP mode than V-CPAP.

B-CPAP delivers mechanical oscillatory vibrations that simulate waveforms produced by high-frequency ventilation (HFV)^[19,33].

Accordingly, B-CPAP may possess the characteristics of CPAP and HFV at the same time. It has been reported that hemodynamics is better preserved during HFV than during conventionally controlled mechanical ventilation^[34,35], and also when using B-CPAP^[36].

In this study we did not investigate the hemodynamic changes in the two groups but that may be why we saw fewer IVH cases among those who were under B-CPAP.

Several studies have shown that the "Columbia approach"^[37,38], in which B-CPAP is used early in the course of respiratory distress in both premature and term-gestation infants, can effectively lower the incidence of CLD^[39-41]. At Columbia University, the early initiation of nasal prong B-CPAP in combination with a tolerance to elevated PCO₂ levels has been shown to reduce the incidence of CLD to <5% in infants weighing less than 1500 g^[42], consistent with our findings.

The mean cost of hospitalization was lowered by using B-CPAP in our study. Lanieta et al^[43] have successfully demonstrated the usefulness of B-CPAP in a developing country, and have also reported the cost effectiveness of B-CPAP. Pieper et al^[44] have shown the importance of CPAP in the absence of neonatal intensive care and also the improved outcome in neonates treated with CPAP prior to transfer to a tertiary unit.

The small sample size of this study does limit its applicability. A multicenter randomized controlled trial is needed to further confirm these findings.

Conclusion

Based on our results B-CPAP seems to be superior to V-CPAP in terms of treatment of RDS in preterm infants due to fewer complications, shorter hospital stay, and lower cost. The simplicity and low cost of B-CPAP compared with V-CPAP makes it an attractive option in resource-poor setups.

Acknowledgment

The authors thank the research Deputy of Kerman University of Medical Sciences for the financial support. The authors also wish to thank the personals of NICU of Afzalipour Hospital for their assistance.

Conflict of Interest: None

References

1. Chami M, Geoffray A. Pulmonary sequelae of prematurity: radiological manifestations. *Pediatr Pulmonol Suppl* 1997;16:51.
2. Chye JK, Gray PH. Rehospitalization and growth of infants with bronchopulmonary dysplasia: a matched control study. *J Paediatr Child Health* 1995;31(2):105-11.
3. UK Collaborative ECMO Trial Group. UK collaborative randomized trial of neonatal extracorporeal membrane oxygenation. *Lancet* 1996;348(9020):75-82.
4. Economic outcome for intensive care of infants of birthweight 500-999 g born in Victoria in the post surfactant era. The Victorian Infant Collaborative Study Group. *J Paediatr Child Health* 1997;33(3):202-8.
5. Vaucher YE, Dudell GG, Bejar R, Gist K. Predictors of early childhood outcome in candidates for extracorporeal membrane oxygenation. *J Pediatr* 1996;128(1):109-17.
6. Walsh-Sukys MC, Bauer RE, Cornell DJ, et al. Severe respiratory failure in neonates: mortality and morbidity rates and neurodevelopmental outcomes. *J Pediatr* 1994;125(1):104-10.
7. Greenough A. Neonatal chronic lung disease and exogenous surfactant therapy. *Eur J Pediatr* 1998; 157(Suppl 1):S16-8.
8. Jobe AH. Pulmonary surfactant therapy. *N Engl J Med* 1993; 328(12):861-8.
9. Guyer B, MacDorman MF, Martin JA, et al. Annual summary of vital statistics-1997. *Pediatrics* 1998; 102(6):1333-49.
10. Hertz-Picciotto I, Din-Dzietham R. Comparisons of infant mortality using a percentile-based method of standardization for birthweight or gestational age. *Epidemiology* 1998;9(1):61-7.
11. Menard MK, Liu Q, Holgren EA, Sappenfield WM. Neonatal mortality for very low birth weight deliveries in South Carolina by level of hospital perinatal service. *Am J Obstet Gynecol* 1998; 179(2):374-81.

Archive of SID

12. Dooley SL, Freels SA, Turnock BJ. Quality assessment of perinatal regionalization by multivariate analysis: Illinois, 1991–1993. *Obstet Gynecol* 1997;89(2):193-8.
13. Angus DC, Linde-Zwirble WT, Clermont G, et al. Epidemiology of neonatal respiratory failure in the United States. *Am J Respir Crit Care Med* 2001; 164(7):1154–60.
14. Davis PG, Morley CJ, Owen LS. Non-invasive respiratory support of preterm neonates with respiratory distress: Continuous positive airway pressure and nasal intermittent positive pressure ventilation. *Sem Fetal Neonatal Med* 2009;14(1): 14-20.
15. Mazella M, Bellini C, Calevo MG, et al. A randomized control study comparing the Infant Flow Driver with nasal continuous positive airway pressure in preterm infants. *Arch Dis Child Fetal Neonatal Ed* 2001;85(2):86-90.
16. Morley CJ, Davis PG, Doyle LW, et al. Nasal CPAP or intubation at birth for very preterm infants. *N Engl J Med* 2008; 358(7):700-8.
17. Finer NN, Carlo WA, Duara S, et al. Delivery room continuous positive airway pressure/positive end-expiratory pressure in extremely low birth weight infants: a feasibility trial. *Pediatrics* 2004; 114(3):651-7.
18. Gregory GA, Kitterman JA, Phibbs RH, et al. Treatment of the idiopathic respiratory-distress syndrome with continuous positive airway pressure. *N Engl J Med* 1971;284(24):1333-40.
19. Lee KS, Dunn MS, Fenwick M, Shennan AT. A comparison of underwater bubble continuous positive airway pressure with ventilator-derived continuous positive airway pressure in premature neonates ready for extubation. *Biol Neonate* 1998;73(2):69-75.
20. Narendran V, Donovan EF, Hoath SB, et al. Comparison between early bubble CPAP and conventional CPAP in reducing the incidence of chronic lung disease. *Pediatr Res* 2002;51:337A. [abstract]
21. Nowadzky T, Pantoja A, Britton JR. Bubble Continuous Positive Airway Pressure, A potentially better practice, reduces the use of mechanical ventilation among very low birth weight infants With respiratory distress syndrome. *Pediatrics* 2009;123(6):1534-40.
22. Bryan AC, Froese AB. Reflections on the HIFI trial. *Pediatrics* 1991;87(4):565-7.
23. Keszler M. INSURE, Infant Flow, Positive Pressure and Volume Guarantee - Tell us what is best: Selection of respiratory support modalities in the NICU. *Early Hum Dev* 2009;85(10 Suppl):S53-6.
24. Wiswell Th, Srinivasan P. Continuous Positive Airway Pressure. In: Goldsmith JP, Karotkin EH (eds). *Assisted ventilation of the neonate*. 3rd ed. Philadelphia: Saunders 2003; Pp: 127-43.
25. Martin RJ, Fanaroff AA, Walsh Mc, Jobe AH. Assisted ventilation and its complications of respiratory distress. In: Fanaroff RR, Martin RJ (eds). *Neonatal-perinatal Medicine*. 8th ed. Philadelphia: Mosby 2006; Pp: 1100-12.
26. Urs PS, Khan F, Maiya PP. Bubble CPAP - A primary respiratory support for respiratory distress syndrome in newborns. *Ind Pediatr* 2009;46(5):409-11.
27. Kugelman A, Feferkorn I, Riskin R, et al. Nasal Intermittent Mandatory Ventilation versus Nasal Continuous Positive Airway Pressure for respiratory distress syndrome: A Randomized, controlled, prospective study. *J Pediatr* 2007; 150(5):521-6.
28. Tagare A, Kadam S, Vaidya U, et al. A pilot study of comparison of BCPAP vs. VCPAP in preterm infants with early onset respiratory distress. *J Trop Pediatr* 2010;56(3):191-4.
29. Morley CJ, Lau R, De Paoli A, et al. Nasal continuous positive airway pressure: does bubbling improve gas exchange? *Arch Dis Child Fetal Neonatal Ed* 2005;90(4):F343-4.
30. Pillow JJ, Hillman N, Moss TJM, et al. Bubble continuous positive airway pressure enhances lung volume and gas exchange in preterm lambs. *Am J Respir Crit Care Med* 2007;176(1):63-9.
31. Ammari A, Suri M, Milisavljevic V, et al. Variables associated with the early failure of nasal CPAP in very low birth weight infants. *Newborn and Infant Nursing Reviews* 2006;6(2): 68-75.
32. Koti J, Murki S, Gaddam P, et al. Bubble CPAP for respiratory distress syndrome in preterm infants. *Indian Pediatrics* 2010;47(2):139-43.
33. Nekvasil R, Kratky J, Penkova Z, Stejskal J. High frequency "bubble" oscillation ventilation in the neonatal period. *Cesk Pediatr* 1992;47:465-70. (In Czech)
34. Lucking SE, Fields AI, Mahfood S, et al. High-frequency ventilation versus conventional ventilation in dogs with right ventricular dysfunction. *Crit Care Med* 1986;14(9):798-801.
35. Chiaranda M, Rubini A, Fiore G, et al. Hemodynamic effects of continuous positive-pressure ventilation and high-frequency jet ventilation with positive end-expiratory pressure in normal dogs. *Crit Care Med* 1984;12(9):750-4.
36. Huang WC, Hua YM, Lee CM, et al. Comparison between Bubble CPAP and Ventilator-derived CPAP in rabbits. *Pediatr Neonatol* 2008;49(6): 223-9.
37. Wung JT, Driscoll JM, Epstein RA, et al. A new device for CPAP by nasal route. *Crit Care Med* 1975;3(2):76-8.
38. Wung JT, Koons AH, Driscoll JM, James LS. Changing incidence of bronchopulmonary dysplasia. *J Pediatr* 1979;95(5 pt 2):845-7.

Archive of SID

39. Avery ME, Tooley WH, Keller JB, et al. Is chronic lung disease in low birth weight infants preventable? A survey of eight centers. *Pediatrics* 1987;79(1):26-30.
40. De Klerk AM, De Klerk RK. Nasal continuous positive airway pressure and outcomes of preterm infants. *J Paediatr Child Health* 2001; 37(2):161-7.
41. Van Marter LJ, Allred EN, Pagano M, et al. Do clinical markers of barotrauma and oxygen toxicity explain interhospital variation in rates of chronic lung disease? *The Neonatology Committee for the Developmental Network. Pediatrics* 2000;105(6):1194-201.
42. Polin RA, Sahni R. Newer experience with CPAP. *Semin Neonatal* 2002;7(5):379-89.
43. Koyamaibole L, Kado J, Qovu JD, et al. An evaluation of bubble-CPAP in a neonatal unit in a developing country: effective respiratory support that can be applied by nurses. *J Trop Pediatr* 2006;52(4):249-53.
44. Pieper CH, Smith J, Maree D, Pohl FC. Is nCPAP of value in extreme preterms with no access to neonatal intensive care? *J Trop Pediatr* 2003; 49(3):148-52.