

# G<sub>2</sub> chromosomal radiosensitivity and background frequency of sister chromatid exchanges of peripheral blood lymphocytes of breast cancer patients

H. Mozdarani<sup>1\*</sup>, A.H. Ziaee Mashhadi<sup>2,3</sup>, Z. Alimohammadi<sup>4</sup>

<sup>1</sup>Department of Medical Genetics, Faculty of Medical Sciences, Tarbiat Modares University, Tehran, Iran

<sup>2</sup>Department of Radiology, Faculty of Medical Sciences, Tarbiat Modares University, Tehran, Iran

<sup>3</sup>Department of Radiology Technology, Faculty of Para-Medical Sciences, Mashhad University of Medical Sciences, Mashhad, Iran

<sup>4</sup>Department of Genetics, Science and Research Branch, Islamic Azad University, Tehran, Iran

**Background:** Chromosomal alterations play an important role in carcinogenesis. Enhanced chromosomal radiosensitivity is shown for many cancer predisposition conditions including breast cancer. In this study chromosomal radiosensitivity and the frequency of background sister chromatid exchanges (SCE) in lymphocytes of normal individuals and breast cancer patients was compared. **Materials and Methods:** G<sub>2</sub> assay was performed on peripheral blood lymphocytes obtained from 60 breast cancer patients and 50 normal control. Blood culture was initiated and cells were irradiated with 1 Gy gamma-rays 4 h prior to harvesting. After metaphase preparations and slide making, chromatid aberrations were scored. For SCE studies, blood samples from 30 breast cancer patients and 30 normal control were studied. 24 hours after culture initiation, 5-bromodeoxy uridine (BrdU) was added and cells were harvested 48 hours after addition of BrdU. Slides were stained in Hoechst 33258 and exposed to UVA source, then stained in Giemsa. **Results:** Results indicated that the frequency of radiation induced chromatid breaks was significantly higher in breast cancer patients compared to normal control ( $p < 0.01$ ). From radiosensitivity point of view, 12% of normal control and 47% of breast cancer patients showed elevated chromatid radiosensitivity. Frequency of background SCE was significantly higher in lymphocytes of breast cancer patients compared to lymphocytes of control ( $p < 0.05$ ). **Conclusion:** Elevated chromosomal radiosensitivity and higher frequency of SCE in lymphocytes of breast cancer patients might be indicative of genomic instability of these cells. Increased radiosensitivity could also be due to defects in DNA repair genes involved in breast cancer formation. *Iran. J. Radiat. Res., 2011; 9(3): 167-174*

**Keywords:** Radiosensitivity, chromatid breaks, SCE, breast cancer patients, lymphocytes.

## INTRODUCTION

Breast cancer is one of the most common cancers among females worldwide with an increasing trend even in countries with a low incidence rate<sup>(1,2)</sup>. In Iran the incidence of the disease is rising and affected people are relatively younger compared to their western counterparts<sup>(3,4)</sup>. During last four decades, increasing its incidence rates has made breast cancer one of the most frequent malignancies among Iranian woman<sup>(5)</sup>. The association of chromosomal aberrations and rearrangements and tumor formation has been reported previously<sup>(6)</sup>. It was shown that chromosomal translocations are involved in some human malignancies<sup>(7,8)</sup> and that chromosomal aberrations (CA) are increased prior to clinical manifestation of cancer<sup>(9,10)</sup>. Chromosomal aberrations are manifestation of DNA damages induced directly or indirectly by various types of clastogenic chemical or physical agents. Both impaired DNA repair and genome instability are considered as factors underlying increased susceptibility to malignancy<sup>(11,12)</sup>. The biological importance of genomic instability and DNA repair mechanisms in cancer development are particularly well

### \*Corresponding author:

Prof. Hossein Mozdarani,  
Department of Medical Genetics, Faculty of Medical Sciences, Tarbiat Modares University, P.O. Box 14115-111. Tehran, Iran.

Fax: +98 21 88006544

E-mail: [mozdarah@modares.ac.ir](mailto:mozdarah@modares.ac.ir)

illustrated by several heritable genetic disorders known as chromosome breakage syndromes, such as ataxia–telangiectasia (AT), Nijmegen breakage syndrome, Bloom syndrome, and Fanconi anemia, characterized by inherited chromosomal instability, radiosensitivity and cancer predisposition<sup>(12-14)</sup>. Apart from these rare syndromes, the deficient DNA repair capacity has been proposed to be a predisposing factor in familial and sporadic breast cancer cases<sup>(15, 16)</sup>. Genomic instability has also been described for various hereditary cancers including hereditary breast cancer<sup>(17, 18)</sup>. About 10% of apparently normal individuals and 40% of breast cancer cases show elevated radiosensitivity i.e. in the range of AT heterozygotes, linking high radiosensitivity with predisposition to cancer<sup>(19)</sup>. Radiosensitivity has been studied in breast cancer patients in terms of G<sub>2</sub>, micronuclei or comet assay<sup>(16, 19, 20-23)</sup>. Despite current information, a consensus has not been reached on cellular assays and breast cancer risk. Reported data in the literature are contradictory. Some reported high radiosensitivity and reduced capacity of DNA damage repair of peripheral blood lymphocytes of breast cancer patients when exposed to ionizing radiation in terms of chromosomal aberrations<sup>(15, 24, 25)</sup>, micronuclei<sup>(17, 18, 20, 23, 26, 27)</sup> and DNA fragmentation<sup>(16, 21, 22, 28, 29)</sup>; while others reported no significant difference between the DNA repair capacity and formation of chromosomal aberrations<sup>(17, 22, 30)</sup>. However, the relatively low number of papers published with the G<sub>2</sub> or MN assay are not suitable for meta analysis and call for larger scale studies in different populations to rule out the usefulness of these methods for screening purposes and further understanding of occurrence of genome instability in breast cancer patients<sup>(27)</sup>. There are also reports showing different yield of sister chromatid exchange (SCE) in lymphocytes of normal control and breast cancer patients. However because of limited studies, hence limited information, there is not a consensus agree-

ment for using SCE as biomarker for screening patients with predisposition to breast cancer<sup>(31, 32, 33)</sup>. Therefore, the development of assays with the potential of identifying cancer prone individuals is of prime interest in the field of cancer research.

The aim of this study was therefore to assess the radiosensitivity of lymphocytes of breast cancer patients in terms of radiation induced chromatid aberrations and background frequency of sister chromatid exchanges compared to lymphocytes of not affected control individuals in Iranian population.

## MATERIALS AND METHODS

### *Patients and study subjects*

A total of 60 breast cancer patients age ranging between 25 and 76 years (mean age  $46 \pm 13.9$ ), and 50 (40 women and 10 men) normal (control) age ranging between 23 and 66 years (mean age  $37.4 \pm 11$ ) were studied for G<sub>2</sub> assay and radiosensitivity. For Sister chromatid exchange (SCE) studies 30 breast cancer patients were randomly selected among patients with the age range of 26-63 (mean age  $(46 \pm 11)$  and 30 (20 women and 10 men) normal (control) age ranging between 27 and 65 years (mean age  $37 \pm 9$ ). The study was approved by the Ethical Committee of the Faculty of Medical Sciences of the Tarbiat Modares University. All donors gave their informed written consent and completed a written questionnaire to obtain information related to their life style, such as dietary habits, medical history and exposure to chemical and physical agents. Therefore, to limit confounding factors and be sure of the effects seen on samples is due to ionizing radiation, all samples had been screened to exclude previous radiation exposure, smoker, antibiotic consumption and viral infection at least one month prior to sample collection.

### *Whole blood culture and irradiation for radiosensitivity study*

Venous blood samples were collected in

heparinised vacutainers. Each blood sample was divided into two parts one as non-exposed and the other for exposure to gamma irradiation. Whole blood culture was prepared by adding 0.4 mL blood to 4.5 mL RPMI-1640 medium (Gibco BRL) supplemented with 0.2 mM L-glutamine, 15% fetal bovine serum (Gibco BRL), antibiotics (penicillin 100 IU/mL and streptomycin 100 µg/mL). Phytohemagglutinin (PHA) at a final concentration of 5 µg/mL was added to the culture medium to stimulate division of lymphocytes. Blood cultures were incubated at 37 °C for 72 hours. In irradiated group, four hours before harvesting culture vessels were exposed to 1 Gy gamma rays generated from a <sup>60</sup>Co source (Theratron 780C, AECL, Kanata, Canada) at source to sample distance of 80 cm with a dose rate of 165.8 - 156.9 cGy/min at room temperature (23 ± 2 °C). Colcemid (Sigma Aldrich) at a final concentration of 0.1 µg/mL was added 2 h prior to harvesting. The cells were then collected with centrifugation (1200 rpm, 10 min) and pellets were resuspended in hypotonic solution (0.075 M KCl, Merck) for 10 min at 37 °C. Cells were centrifuged and hypotonic solution was removed by aspiration. Cells were then fixed three times in methanol: glacial acetic acid (3:1) before spreading on wet slides. Slides were air dried and stained in 4% Giemsa for 10 min. Chromatid breaks were scored and analysed in well spread metaphase cells under x100 oil immersion light microscope (Zeiss, Germany). All types of single chromatid breaks were scored where a clear discontinuity exists. 100 cells were scored per sample. Figure 1 shows a typical metaphase spreads with chromatid aberrations (arrows).

#### Cell culture for SCE analysis

Blood culture was initiated as described above. 24 hours after culture initiation, 5-bromodeoxy uridine (BrdU, 10 µM, Sigma) was added. Cells were harvested 48 hours after addition of BrdU with the same method described for radiosensitivity study.

Air dried slides were dipped in Hoechst 33258 (100 mg/mL; Sigma) for 10 min in the dark, blotted and placed in a shallow trough containing 2 x SSC (0.3 M NaCl and 0.03 M trisodium citrate) under a UVA source for 4 h. Following exposure, slides were rinsed several times in distilled water and stained in 4% Giemsa. After staining, slides were dipped briefly in distilled water containing a few drops of ammonia to enhance the blue colour of the pale chromatid. Fifty metaphases were scored per sample. A typical photomicrograph of a metaphase showing SCE (arrows) is shown in figure 2.

#### Statistical analysis

For radiosensitivity study, for each sample the spontaneous yield of chromatid

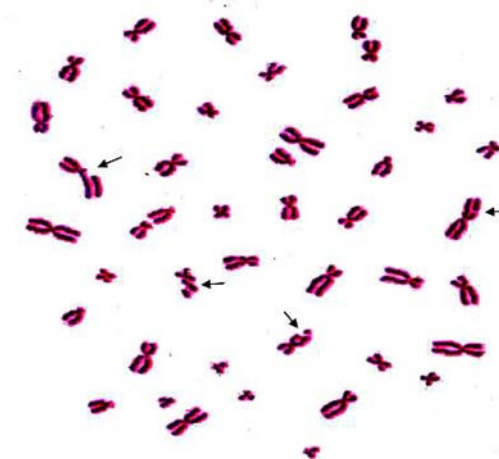


Figure 1. A typical photomicrograph showing metaphase with chromatid aberrations (arrows). Magnification x1000.



Figure 2. A typical photomicrograph showing metaphase with sister chromatid exchanges (SCE) (arrows). Magnification x1000.

breaks was subtracted from the yield in irradiated cells to give the induced chromatid break yield. The mean of the aberrations per cell was calculated for each sample. Results were analysed using SPSS (version 17) software (SPSS Inc., Chicago, IL, USA). Paired *t*-test was used to compare the frequency of chromatid aberrations and SCE within a group and between groups before and after irradiation. The Kolmogorov-Smirnov test showed a normal distribution of data. One way analysis of variance (ANOVA) was used to determine the significant differences between studied groups. *P*-value of less than 0.05 was considered as significant. Sigma plot 2004 for Windows, version 10.0 was used to draw figures.

## RESULTS

The data obtained from normal control and breast cancer patients before and after 1 Gy gamma irradiation is summarized in table 1 and shown in figure 3. Frequency of background and radiation induced chromatid breaks in normal male and female subjects were statistically analyzed and found no significant difference between men and women ( $p > 0.05$ ), therefore data for both sexes were combined in the following statistical analysis. The mean spontaneous yield of chromatid breaks was significantly different between control and cancer patients ( $p < 0.05$ ). However, after gamma irradiation the frequency of chromatid breaks increased dramatically significantly different with unirradiated samples

( $p < 0.01$ ). Also the frequency of breaks in samples from breast cancer patients was significantly higher than normal individuals ( $p < 0.01$ ) (figure 3).

The histograms in figure 4 (A and B) show the distribution of individuals with variable number of radiation induced chromatid breaks. The mean + 1 SD of the induced frequency of breaks in the control group was used as an arbitrary cut-off point as suggested by Scott *et al.* (20). As shown in figure 4, 12% of individuals in the control group (6 out of 50) (figure 4 A), 47% (28 out of 60) (figure 4B) were regarded as showing elevated radiosensitivity.

Table 2 summarized the results obtained for cells scored for SCE. There was no significant difference between data obtained for men and women in control group ( $p > 0.05$ ), therefore data for both sexes were combined in the following analysis when comparing normal group with breast

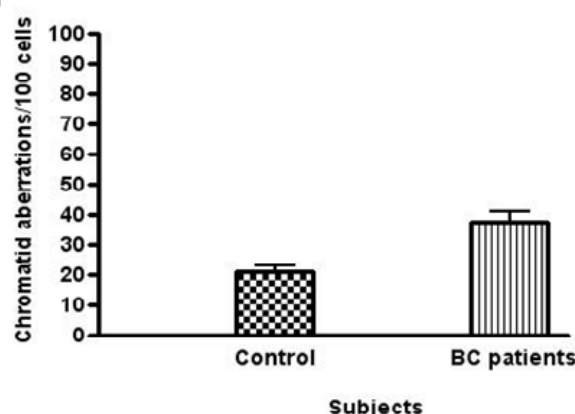


Figure 3. Frequency of chromatid aberrations observed in normal controls and breast cancer patients. Error bars indicate standard error of mean values.

Table 1. Mean frequency of chromatid breaks scored in blood samples obtained from control individuals and breast cancer patients. ± indicates standard errors are mean values.

Subjects	Sex	No. of samples	Mean age (Range)	No. of cells analyzed	Mean background breaks ± SE	Mean gamma rays induced breaks ± SE
Control	Female and male	50	37.4 ± 11 (23-66)	5000	3 ± 0.14	21.1 ± 2.1
Breast cancer patients	Female	60	46 ± 13.9 (25-76)	6000	± 0.13*	37.7 ± 3.3 **

\*Significantly different from control ( $p < 0.05$ )

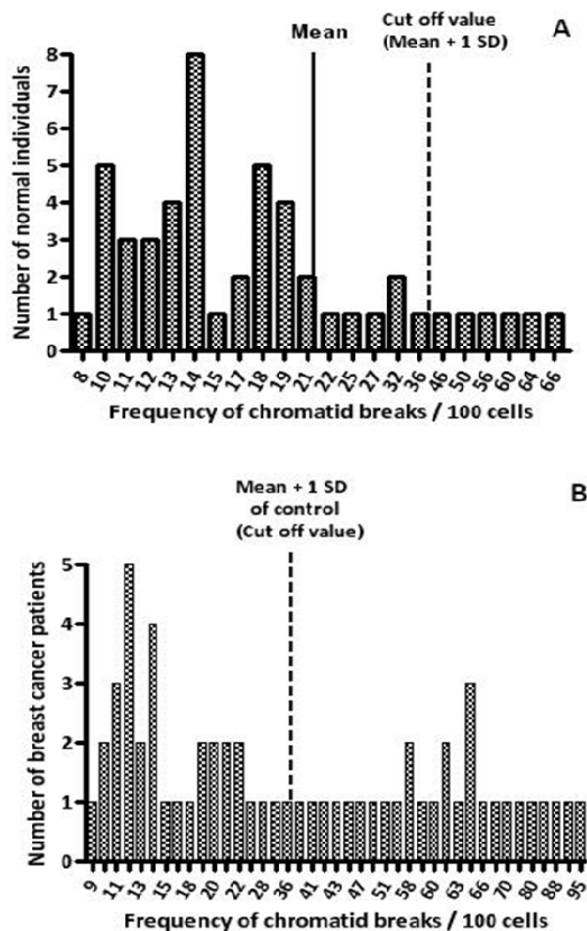
\*\* Significantly different from control ( $p < 0.01$ )

cancer patients. Statistical analysis of the frequency of SCE scored in lymphocytes of breast cancer patients was significantly higher than cells obtained from controls ( $p < 0.05$ ).

## DISCUSSION

The  $G_2$  assay gives a measure of the frequency of chromatid aberrations in the form of chromatid breaks and gaps present in cells arrested in metaphase following irradiation of peripheral blood lymphocytes or other types of cells in the  $G_2$  phase of the cell cycle. The aberrations resulting from the radiation treatment indicates the radiosensitivity of an individual. The  $G_2$  assay might show association between radiosensitivity and genetic predisposition to cancer indicating individuals with a strong predisposition to cancer show higher chromosomal aberrations hence exhibit higher degree of radiosensitivity<sup>(34)</sup>.

Results presented in table 1 and figure 3 indicate that lymphocytes of breast cancer patients show an elevated frequency of chromatid aberrations compared to lymphocytes obtained from normal controls; hence, more radiosensitivity than control individuals. As seen in figure 4 about 12% of apparently normal individuals (figure 4A) and 47% of breast cancer patients (figure 4B) were radiosensitive. Almost similar results with slight variations were reported previously. Scott *et al.* reported 9% of normal individuals and 42% of breast cancer patients showed radiosensitivity with the  $G_2$  assay<sup>(19, 20)</sup>. In a study performed in Scotland (UK), chromatid break frequencies were compared for a cohort of previously untreated sporadic breast cancer patients and hospital outpatient controls. In this study 46% of the breast cancer group



**Figure 4.** Distribution of radiation induced chromatid breaks frequency in the control subjects (A) and breast cancer patients (B). Solid line in palate A represents the mean and dashed line indicates the mean + 1 SD used for cut-off point as an indication of increased radiosensitivity in both palates A and B.

**Table 2.** Frequency of SCE scored in blood samples taken from control individuals and breast cancer patients.

Subjects	Sex	No. of samples	Mean age $\pm$ SD	No. of Cells analyzed	Mean SCE/cell	Frequency (min-max)
Control	Male	10	38.7 $\pm$ 10.37	500	3.54 $\pm$ 0.39	2.79 – 3.97
	Female	20	35.5 $\pm$ 8.68	1000	3.35 $\pm$ 0.26	2.87 – 3.85
	Total	30	36.6 $\pm$ 9.22	1500	3.41 $\pm$ 0.32	2.79 – 3.97
Breast cancer patients	Female	30	46 $\pm$ 11.7	1500	3.67 $\pm$ 0.33*	2.88 – 4.17

\*Significantly different from control ( $p < 0.05$ )

showed high radiosensitivity compared to 14% of controls ( $P < 0.001$ )<sup>(35)</sup>. Also, with the G<sub>2</sub> assay 43% of the breast cancer patients with a known or putative genetic predisposition were found to be radiosensitive<sup>(18)</sup>. Our results are more or less similar to the results reported by Riches *et al.*<sup>(35)</sup> both for controls and breast cancer patients.

Although there exists a significant difference between the radiosensitivity of cancer prone patients (individuals with various genetic disorders such as ataxia telangiectasia) and normal control; however, there appears to be a considerable discrepancy in the radiosensitivity of control individuals. Sanford *et al.* carried G<sub>2</sub> assay on two batches of different control groups at different years. They showed a considerable variation between the frequency of chromatid breaks in each study group<sup>(34)</sup>. Since there is a considerable variation between normal control individuals, the relationship between cancer prone individuals and radiosensitivity might be problematic. Chromatid breaks are direct consequence of double strand breaks in DNA. Therefore defective DNA repair machinery was suggested as a potential susceptibility factor, predisposing women to breast cancer<sup>(36)</sup>. Helzlsouer *et al.* in a study with G<sub>2</sub> assay on several women at high risk of breast cancer and breast cancer patients showed a correlation for suboptimal repair and those individuals at high risk for breast cancer<sup>(36)</sup>. Patel *et al.* investigated DNA repair proficiency in breast cancer patients by measuring the frequency of chromatid aberrations in terms of disappearance of chromatid breaks over various time intervals in the G<sub>2</sub> assay<sup>(37)</sup>. This study in line with previous findings<sup>(34, 36)</sup> support that DNA repair is defective in individuals predisposed to cancer. To account for high levels of radiosensitivity and cancer predisposition, several experiments were performed indicating that the DNA of cancer prone cells as well as breast cancer patients repair more slowly or produced more breaks than normal individ-

ual counterparts<sup>(16, 38, 39)</sup>. These observations support the findings that cells exhibiting enhanced chromatid radiosensitivity are deficient in DNA repair<sup>(34, 40, 41)</sup>. These findings might be indicative that radiosensitivity could be a potential predisposing condition to breast cancer through mutations in low penetrance genes<sup>(20, 42)</sup> which may be involved in DNA damage repair processing.

Examination of sister chromatid exchanges (SCE) in lymphocytes may be useful for the evaluation of exposure to mutagens/carcinogens. Regarding higher frequency of sister chromatid exchange in lymphocytes of breast cancer patients compared to controls (table 2), there is not a general agreement about a possible association between SCE and cancer. After study of 131 women presented for breast tumor removal, Husum *et al.* concluded that SCE in lymphocytes is not an indicator of carcinoma of the breast<sup>(31)</sup>. However, women with active breast cancer have shown to have a significantly higher mean SCE frequency than control women<sup>(32, 33)</sup>. Our results also are in line with these reports indicating a higher frequency of SCE per cell in lymphocytes of breast cancer patients compared to normal control. Sister chromatid exchanges reflect an interchange mechanism between sister chromatids of mitotic chromosomes<sup>(43)</sup>. However, background frequency of SCE is influenced by BrdU treatment<sup>(44)</sup> which is used usually in fluorescence plus Giemsa method for SCE detection<sup>(45)</sup>, lymphocyte counts<sup>(46)</sup> and possibly various environmental factors such as smoking. Therefore SCE might not be a good predictive marker for screening cancer prone individuals including those at risk of breast cancer.

Both high frequency of radiation induced chromatid breaks and background frequency of SCE in lymphocytes of breast cancer patients might be due to the genome instability of cells. Genome instability has also been described for various hereditary

cancers including breast cancer (17, 18). Therefore genome instability might be the underlying mechanism of various cellular responses leading to neoplastic development.

In conclusion it seems that G<sub>2</sub> assay for assessment of in vitro radiosensitivity of peripheral blood lymphocytes has potential for screening individuals at risk of breast cancer.

## ACKNOWLEDGMENT

*This work was supported by Research Department of the Faculty of Medical Sciences of Tarbiat Modares University, Tehran, Iran. The authors wish to express their sincere thanks to the head and staff of the oncology departments of Jorjani and Imam khomeini general hospitals for their help and providing samples from cancer patients, all patients and normal individuals for their blood donation and kind contribution, and Ms Zahra Tizmaghz for irradiation of samples.*

## REFERENCES

1. Parkin DM, Bray F, Ferlay J, Pisani P (2005) Global cancer statistics, 2002. *CA Cancer J Clin*, **55**: 74-108.
2. Wilson CM, Tobin S, Young RC (2004) The exploding worldwide cancer burden: the impact of cancer on women. *Int J Gynecol Cancer*, **14**: 1-11.
3. Harirchi I, Ebrahimi M, Zamani N, Järvandi S, Montazeri A (2000) Breast cancer in Iran: a review of 903 case records. *Public Health*, **114**: 143-145.
4. Mousavi SM, Montazeri A, Mohagheghi MA, Mousavi Jarrahi A, Harirchi I, Najafi M, Ebrahimi M (2007): Breast cancer in Iran: an epidemiological review. *Breast J*, **13**: 383-391.
5. Ministry of Health and Medical Education (2007) Iranian Annual National Cancer Registration Report 2005-2006. *Ministry of Health and Medical Education, Office of Deputy Minister for Health, Center for Disease Control and Prevention, Cancer Office: Tehran, Iran 2007*.
6. Heim S and Mitelman F (2009) *Cancer cytogenetics*. 3rd edition; Wiley-Blackwell, New Jersey, USA.
7. Solomon E, Borrow J, Goddard AD (1991) Chromosome aberrations and cancer. *Science*, **254**(5035): 1153-60.
8. Rabbitts TH (1994) Chromosomal translocations in human cancer. *Nature*, **372**(6502): 143-9.
9. Hagmar L, Stromberg U, Bonassi S, Hansteen IL, Knudsen LE, Lindholm C, Norppa H (2004) Impact of types of lymphocyte chromosomal aberrations on human cancer risk: results from Nordic and Italian cohorts. *Cancer Res*, **64**: 2258-2263.
10. Bonassi S, Abbondandolo A, Camurri L, Dal Prá L, De Ferrari M, Degraffi F, Forni A et al. (1995) Are chromosome aberrations in circulating lymphocytes predictive of future cancer onset in humans? Preliminary results of an Italian cohort study. *Cancer Genet Cytogenet*, **79**: 133-135.
11. Lengauer C and Kinzler KW (1998) Vogelstein, B. Genetic instabilities in human cancers. *Nature*, **396**: 643-649.
12. Thompson LH and Schild D (2002) Recombinational DNA repair and human disease. *Mutat Res*, **509**: 49-78.
13. Taylor AMR (2001) Chromosome instability syndromes. Best Practice and Research. *Clinical Haematology*, **14**: 3631-644.
14. Duker NJ (2002) Chromosome breakage syndromes and cancer. *Am J Med Genet*, **115**: 125-129.
15. Parshad R, Price FM, Bohr VA, Cowans KH, Zujewski JA, Sanford KK (1996) Deficient DNA repair capacity, a predisposing factor in breast cancer. *Br J Cancer*, **74**: 1-5.
16. Shahidi, M; Mozdarani H, Bryant PE (2007) Radiation sensitivity of leukocytes from healthy individuals and breast cancer patients as measured by the alkaline and neutral comet assay. *Cancer Letters*, **257**: 263-273.
17. Rothfuss A, Schütz P, Bochum S, Volm T, Eberhardt E, Kreienberg R, Vogel W, Speit G (2000) Induced micronucleus frequencies in peripheral lymphocytes as a screening test for carriers of a BRCA1 mutation in breast cancer families. *Cancer Res*, **60**: 390-4.
18. Baeyens A, Thierens H, Claes K, Poppe B, Messiaen L, De Ridder L, Vral A (2002) Chromosomal radiosensitivity in breast cancer patients with a known or putative genetic predisposition. *Br J Cancer*, **87**: 1379-1385.
19. Scott D (2004) Chromosomal radiosensitivity and low penetrance predisposition to cancer. *Cytogenet Genome Res*, **104**: 365-370.
20. Scott D, Barber JB, Spreadborough AR, Burrill W, Roberts SA (1999) Increased chromosomal radiosensitivity in breast cancer patients: a comparison of two assays. *Int J Radiat Biol*, **75**: 1-10.
21. Sánchez P, Peñarroja R, Gallegos F, Bravo JL, Rojas E, Benítez-Bribiesca L (2004) DNA damage in peripheral lymphocytes of untreated breast cancer patients. *Arch Med Res*, **35**: 480-483.
22. Djuzenova CS, Muhl B, Fehn M, Oppitz U, Muller B, Flentje M (2006) Radiosensitivity in breast cancer assessed by the Comet and micronucleus assays. *Br J Cancer*, **94**: 1194-1203.
23. Mozdarani H, Mansouri Z, Haeri SA (2005) Cytogenetic radiosensitivity of G<sub>0</sub>-lymphocytes of breast and esophageal cancer patients using the micronucleous assay. *J Radiat Res (Japan)*, **46**: 111-116.
24. Rigaud O, Guedeney G, Duranton I, Leroy A, Doloy MT, Magdelenat H (1990) Genotoxic effects of radiotherapy and chemotherapy on the circulating lymphocytes of breast cancer patients. II. Alteration of DNA repair and chromosome radiosensitivity. *Mutation Res*, **242**: 25-35.
25. Helzlsouer KJ, Harris EL, Parshad R, Fogel S, Bigbee WL, Sanford KK (1995) Familial clustering of breast cancer: possible interaction between DNA repair proficiency

- and radiation exposure in the development of breast cancer. *Int J Cancer*, **64**: 14-17.
26. Varga D, Vogel W, Bender A, Surowy H, Maier C, Kreienberg R, Deissler H, Sauer G (2007) Increased radiosensitivity as an indicator of genes conferring breast cancer susceptibility. *Strahlenther Onkol*, **183**: 655-60.
  27. Iarmarcovai G, Ceppi M, Botta A, Orsière T, Bonassi S (2008) Micronuclei frequency in peripheral blood lymphocytes of cancer patients: a meta-analysis. *Mutat Res*, **659**: 274-83.
  28. Colleu-Durel S, Guitton N, Nourgalieva K, Legue F, Leveque J, Danic B, Chenal C (2004) Alkaline single cell gel electrophoresis (comet assay): a simple technique to show genomic instability in sporadic breast cancer. *Eur J Cancer*, **40**: 445-451.
  29. Hussien MM, McNulty H, Armstrong N, Johnston PG, Spence RA, Barnett Y (2005) Investigation of systemic folate status, impact of alcohol intake and levels of DNA damage in mononuclear cells of breast cancer patients. *Br J Cancer*, **92**: 1524-1530.
  30. Trenz K, Routhfuss A, Schutz P, Speit G (2002) Mutagen sensitivity of peripheral blood from women carrying a BRCA1 or BRCA2 mutation. *Mutation Res*, **500**: 89-96.
  31. Husum B, Wulf HC, Niebuhr E (1981) Sister-chromatid exchanges in lymphocytes in women with cancer of the breast. *Mutat Res*, **85**: 357-62.
  32. Livingston GK, Cannon LA, Bishop DT, Johnson P, Fine-man RM (1983) Sister chromatid exchange: variation by age, sex, smoking, and breast cancer status. *Cancer Genet Cytogenet*, **9**: 289-99.
  33. Dhillon VS, Bhasker R, Kler RS, Husain SA (1995) Sister chromatid exchange (SCE) studies in breast cancer patients: a follow-up study. *Cancer Genet Cytogenet*, **80**: 115-117.
  34. Sanford KK, Parshad R, Gantt RR, Tarone RE (1989) A deficiency in chromatin repair, genetic instability, and predisposition to cancer. *Crit Rev Oncog*, **1**: 323-341.
  35. Riches AC, Bryant PE, Steel CM, Gleig A, Robertson AJ, Preece PE, Thompson AM (2001) Chromosomal radiosensitivity in G2-phase lymphocytes identifies breast cancer patients with distinctive tumour characteristics. *Br J Cancer*, **85**: 1157-61.
  36. Helzlsouer KJ, Harris EL, Parshad R, Perry HR, Price FM, Sanford KK (1996) DNA repair proficiency: potential susceptibility factor for breast cancer. *J Natl Cancer Inst*, **88**: 754-5.
  37. Patel RK, Trivedi AH, Arora DC, Bhatavdekar JM, Patel DD (1997) DNA repair proficiency in breast cancer patients and their first-degree relatives. *International Journal of Cancer*, **73**: 20-24.
  38. Mohseni A, Mozdarani H, Mozdarani S (2009) DNA damage and repair of leukocytes from Fanconi anemia patients, carriers and healthy individuals as measured by the alkaline comet assay. *Mutagenesis*, **24**: 67-73.
  39. Shahidi M, Mozdarani H, Mueller WU (2010) Radiosensitivity and repair kinetics of gamma-irradiated leukocytes from sporadic prostate cancer patients and healthy individuals assessed by alkaline comet assay. *Iran Biomed J*, **14**: 67-75.
  40. Mozdarani H and Bryant PE (1989) Induction and re-joining of chromatid breaks in X-irradiated A-T and normal human G2 fibroblasts. *Int J Radiat Biol*, **56**: 645-659.
  41. Parshad R, Price FM, Bohr VA, Cowans KH, Zujewski JA, Sanford AA (1996) Deficient DNA repair capacity, a predisposing factor in breast cancer. *Br J Cancer*, **74**: 1-5.
  42. Scott D, Barber JB, Levine EL, Burrill W, Roberts SA (1998) Radiation induced micronucleus induction in lymphocytes identifies high frequency of radiosensitive cases among breast cancer patients: a test for predisposition? *Br J Cancer*, **77**: 614-620.
  43. Latt S (1981) Sister chromatid exchange formation. *Annu Rev Genet*, **15**: 11-55.
  44. Wojcik A and Obe G (2007) Sister chromatid exchanges. In: Obe G and Vijayalaxmi (Eds.) Chromosomal alterations: Methods, Results and importance in human health. Springer-Verlag, Berlin, Heidelberg.
  45. Perry P and Wolff S (1974) New Giemsa method for differential staining of sister chromatids. *Nature*, **251**: 156-157.
  46. Bender MA, Preston RJ, Leonard RC, Pyatt BE, Gooch PC (1992) On the distribution of spontaneous SCE in human peripheral blood lymphocytes. *Mutation Res*, **281**: 227-232.