

Cisplatin Resistant Patterns in Ovarian Cell Line Using FTIR and Principle Component Analysis

Rezvan Zendehtdel^a, Ali Masoudi-Nejad^a, Javad Mohammadzadeh^a and Farshad H. Shirazi^{a,b*}

^aPharmaceutical Research Center, Shahid Beheshti University of Medical Sciences, Tehran, Iran. ^bSchool of Pharmacy, Shahid Beheshti University of Medical Sciences, Tehran, Iran.

Abstract

Cisplatin is a common chemotherapeutic agent that used for treatment of many solid cancers. Rapid identification of chemotherapy resistance is very important and may lead to effective treatment plan. Spectroscopy techniques, such as infrared spectroscopy, which are sensitive to biochemical composition of samples, have shown potentials to discriminate tissues. Developing in Fourier transform infrared (FTIR) as a diagnostic tool support conventional technique in investigating cell phenotype. By this goal three different cell lines, two cisplatin resistant OV2008-DDP (C13) and A2780-CP ovarian cell lines and one cisplatin sensitive A2780 cell line were investigated by FTIR spectroscopy. Data were subjected to principle component analysis (PCA) to obtain FTIR pattern for cisplatin resistance. Using FTIR spectroscopy on these cells in the range of 400-4000 cm^{-1} was shown dramatic change in cells. Results shows that Cisplatin resistance pattern is characterized in spectrum with the alteration of conformation in secondary structure of proteins and a shift toward the high wave numbers of CH₂ stretching vibration. The FTIR data set between 1000 and 3000 cm^{-1} could be consumed as biochemical typicality spectra among resistant and sensitive cell lines while correctly classified by PCA model. Our work supports the promise of PCA analysis of FTIR data as a powerful combined approach for the development of automated methods to recognize resistant to cisplatin in experimental cell lines. One of the advantages of this tool is to investigate the resistant percent of cancer cells. Such technique may bring new tool in cancer diagnosis and stage definition in cancerous tissues.

Keywords: Drug resistant; Fourier transform infrared; Principle component analysis; Feature extraction; Cell line.

Introduction

Cisplatin is a commonly chemotherapeutic agent that used for treatment of many cancer types including testicular, ovarian, cervical, head and neck, non-small cell lung and lymphoma(1). However, resistance to cisplatin therapy is serious problem for successful treatment (2). In ovarian cancers, more than

70% of patients initially respond to therapy with cisplatin; however, this stabilized the five-year survival rate for ovarian carcinoma population less than 25% (3).

There are many theories to explain platinum resistant activity (4). One of the major mechanisms of resistance to cisplatin is a decreased effective concentration of drug in the cells. Reduction in cisplatin concentration of 20-70% has been observed in cell lines resistant to cisplatin (5). A family of membrane transport proteins has been identified as an implication

* Corresponding author:

E-mail: fshirazi@yahoo.com

in this phenomenon. Some reports indicate exposure to cisplatin can cause glycoprotein expression in ovarian cancer cell line (6).

Cisplatin at plasma concentrations down regulates protein expression of copper transporter (Ctr1) in human ovarian carcinoma cell lines (7, 8). In two cell lines, A2780-CP and 2008-C13 over expression of copper transporter ATP7A was shown to be causal for resistance to cisplatin (9). Increased levels of transporter have been observed with decreased lysosomal cellular compartment in the cisplatin-resistant ovarian carcinoma cell line. This cell line also has decreased protein levels of the lysosome associated proteins (10). Although many reporting are about protein content changing in cisplatin resistant cell lines, little is known about structural and conformational protein changing.

There is an increasing interest in the use of FTIR technology in large number of different research. It has been used to investigate biochemical composition of cells (11) and the study of normal and malignant tissue (12-14). These literatures have shown that the FTIR technique can be used to detect a cell phenotype or an illness with a good level of sensitivity.

Molecular difference in sensitive and resistant cell lines by FTIR spectroscopy has not been studied broadly. In this research, we used a FTIR-based assay followed by PCA analysis to look for the resistant specific patterns. This effort demonstrated changes in biochemical index, which can be used for platinum resistant activity.

Experimental

Cell lines

A2780 (human ovarian carcinoma-sensitive to cisplatin), A2780-CP and C13 (human ovarian carcinoma-resistant to cisplatin) cell lines were obtained from national cell bank of Iran (Tehran, Iran). All cell lines were grown in RPMI-1640 medium and supplemented with 10% heat inactivated fetal bovine serum, antibiotics: penicillin, streptomycin (all chemicals from Sigma, St. Louis, MO, USA). Cells were maintained at 37°C in humidified atmosphere containing 5% CO₂. The medium was replaced every two day.

Cell preparation for spectroscopy

The following procedure was similarly applied for both of sensitive and resistant cell lines. Cells were trypsinized from the original flask and seeded in 25 cm² flasks with fresh medium to reach the logarithmic phase of growth curve. After that cell were washed twice in saline (0.9% NaCl), suspend and centrifuged at 1000 rpm for 5 min, then resuspended in saline to obtain a concentration of 1×10^5 cells. 10 μ L of each cell suspension was placed on a zinc selenide sample carrier, which was dehydrated in a vacuum cabin (0.8 bar) for approximately 4 min. These plates were then used for FTIR spectroscopy.

FTIR spectroscopy

For FTIR studies, thin dried films of cell suspensions were used on the Zinc selenide window by using a WQF-510 (Rayleigh Optics, China) spectrometer, equipped with a KBr beam splitter and a DLaTGS (deuterated Lanthanide triglycine sulphate) detector. The whole system was continuously purged with N₂ (99.999%). In each spectrum, 100 scans were collected at a resolution of 4 cm⁻¹ for every wave number between 400 and 4000 cm⁻¹. These experimental conditions were kept constant for all the measurements. Each single spectrum was baseline corrected and then normalized in order to have the range spanning from 0 to 1.

Data analysis

Data set

A total of 45 FTIR spectrums between 1000-3000 cm⁻¹ have been used in this study as the dataset. Distribution of different FTIR spectra was equal for types of A2780, A2780-CP and C13 cell lines.

Principle component analysis

Principle component analysis (PCA) is a well-known method of dimension reduction. The basic idea of PCA is to reduce the dimensionality of a data set, while retaining as much as possible the variation present in the original predictor variables. This is achieved by transforming the p original variables $X = [x_1, x_2, \dots, x_p]$ to a new set of q predictor variables, $T = [t_1, t_2, \dots, t_q]$, which are linear combinations of the original variables.



Figure 1. FTIR spectral features of A2780, A2780-CP and C13 cell lines in 1800-900 cm^{-1} .

In mathematical terms, PCA sequentially maximizes the variance of a linear combination of the original predictor variables (15). PCA were done using defaults of the program's parameters. A total of the FTIR output as absorbance percent in different wave number between 1000-3000 cm^{-1} have been used for input.

Result and Discussion

Spectrum alteration

Spectral features of A2780, A2780-CP and C13 cell lines are shown in Figure 1 for the region of 1800-900 cm^{-1} . The normalized FTIR spectra in this region showed alterations in different spectrum areas. Comparison between spectra showed at least five areas of variation:

a) there is a peak about 1636 cm^{-1} which can be related to β -sheet secondary structure of amid I (16). In the ovarian human resistant cells the peak of about 1636 cm^{-1} shifted toward the lower wave numbers. This may represent the possibility of molecular interaction in β -sheet conformation structure of ovarian sensitive cells.

b) The vibration band at 1530 cm^{-1} is assigned to β -sheet secondary structure of amid II (17). In A2780-cp cell line; there is a broadband at 1530 cm^{-1} while there are two bands at 1530

and 1540 cm^{-1} in the sensitive cell line. There are positive shoulder peaks at 1540 cm^{-1} and a peak at 1530 cm^{-1} in C13. The bands at 1540 cm^{-1} are assigned to α -secondary structure of amid II (18). This can be showed clear margin of α -secondary and β -sheet structure of amid II in sensitive cell while in the C13 resistant cell the reduction of α -secondary structure of amid II was observed. The result shows α -secondary structure conversion to β -sheet structure conformation in the C13 resistant cell.

c) The vibration bands at 1240 cm^{-1} are assigned to amid III (17). In the ovarian human resistant cells the peak of about 1240 cm^{-1} shifted toward the lower wave numbers. This shows the addition of molecular interaction in amid III structure of ovarian sensitive cell.

d) The vibration band at 1380 cm^{-1} is assigned to glycoprotein (18). There is a peak at this band in the A2780 cell line spectra while in the C13 and A2780-CP cell lines shifted toward the lower wave numbers.

e) There are positive shoulder peaks at 1407 cm^{-1} and 1330 cm^{-1} in the sensitive cell line while there aren't in the ovarian human resistant cells.

The normalized FTIR spectra of A2780, A2780-CP and C13 cell lines are shown in Figure 2 for 3100-2500 cm^{-1} . The CH stretching region

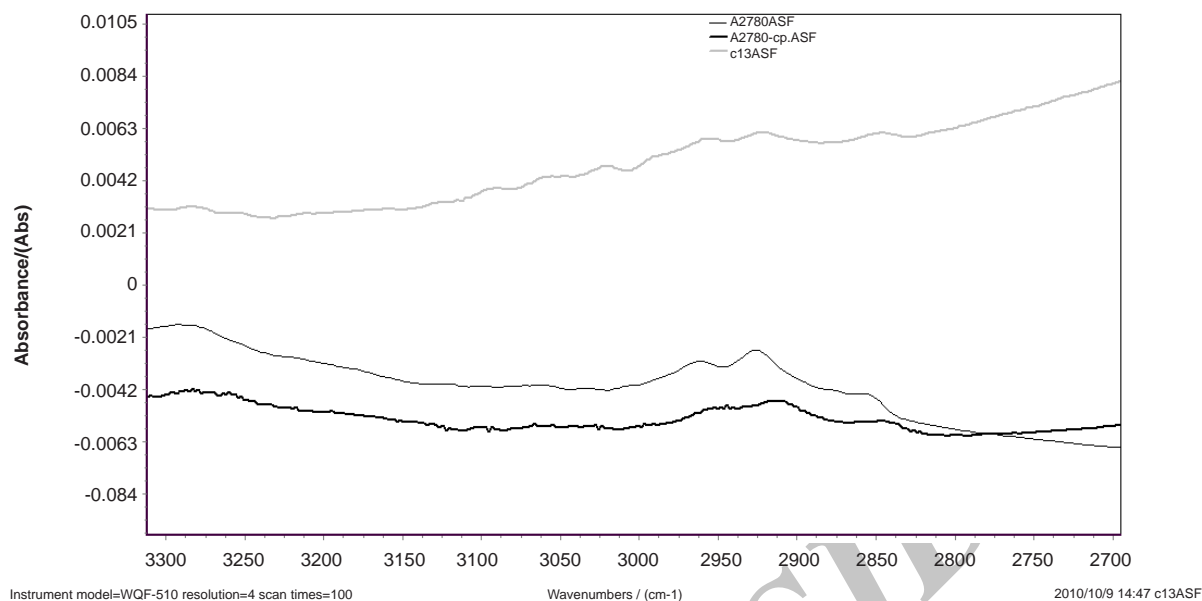


Figure 2. Spectral features of A2780, A27-80-CP and C13 cell lines in 3100-2500 cm^{-1} .

(3000-2800 cm^{-1}) contains the asymmetric and symmetric membrane lipids (20), which are appeared differently in sensitive and resistant cells.

CH_2 symmetric and asymmetric stretching vibration bands are appeared at 2920 and 2852 cm^{-1} and CH_3 stretching vibrations at 2950 cm^{-1} , respectively (20). Our results show that CH_2 symmetric and asymmetric stretching vibration bands shift to higher wave numbers in resistant cells. This might be as the result of condensation of the unsaturated lipid cell membrane. In sensitive cell line the intensity of CH_2 stretching bands and CH_3 stretching vibrations are higher than resistant cell line. Our research shows that the lipophilicity of cell membrane has been changed in the resistant cells.

Data processing

Unsupervised methods such as PCA attempt to explore the data to detect relationships without any presumption on the priority of the various data. These methods identify groups of data elements that are highly correlated with each other. In this study PCA can be used to extract the most significant variations between groups of spectra of cells. Thus, determining an unknown cell type from several possibilities cells

can be completed using spectra from known cell types. Score plots provide visualization of the data, whereby the load of data is an indicator of biochemical similarity (21).

Data of A2780, A2780-cp and C13 cell lines sorted into data sets composed of 45 variables. FTIR wave number from 1000 to 3000 cm^{-1} was used in four segmentation of 1000-1500 cm^{-1} , 1500-2000 cm^{-1} , 2000-2500 cm^{-1} and 2500-3000 cm^{-1} . There are no suitable clustering with PCA for four segmentation of data set (Data was not shown). These result show, the lipid stretching region (2500-3000 cm^{-1}) and protein band (20) region (1500-2000) could not discriminate the cell type.

The data of the cell lines between 1000 and 3000 cm^{-1} were analyzed with PCA resulting in the clustered shown in Figure 3. The cluster of points derived from the first two PC scores which summarized spectral features of three cell lines are shown in a 2-dimensional projection. PCA correctly classified 96% of all spectra using two PCs and thus provide a good separation for representing the variety of sensitive and resistant cell line spectra. The data of the resistant cells are in the central area of PCA projection while it could not be distinguished between resistant cells. There are

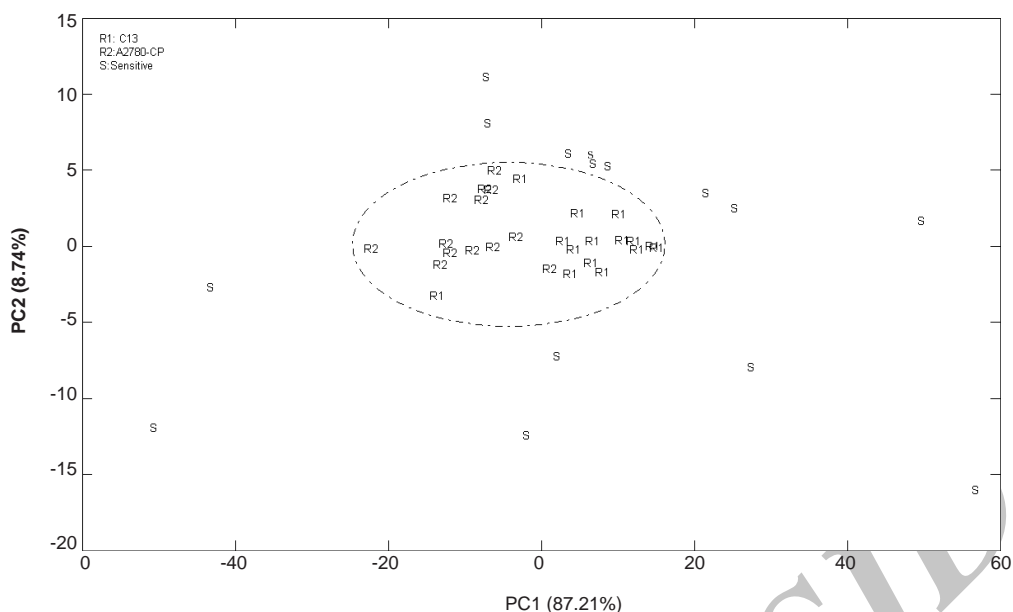


Figure 3. Score plot of PCA analysis for the FTIR spectral data of A2780, A2780CP and C13 cells in the region of 900 to 1500 cm^{-1} (R:resistant and S:sensitive).

similarities between the resistance cell lines of A2780-CP and C13 spectrum, which could not discriminate using this technique. Thus the molecular compositions of two different resistant cell lines which cause resistance to cisplatin might almost be similar.

Loadings plots allow for identification of

wave numbers and corresponding biochemical responsibility. Figure 4 shows the loading plot of PC1 resulted from the FTIR spectra of these cell lines. This figure clearly shows that the variables from of Amid I and Amid II bands (18) strong loadings contributing to the separation of sensitive and resistant cell lines.

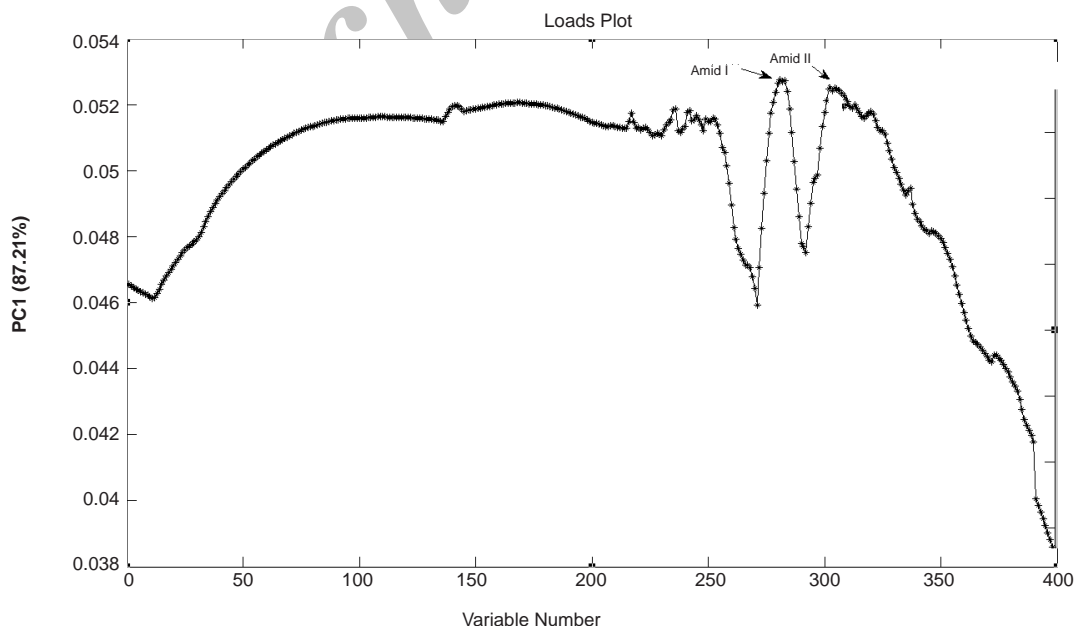


Figure 4. Loading plot of PCA analysis as is resulted from the FTIR data of A2780, A2780CP and C13 cells.

Conclusion

Resistance to Chemotherapy is a serious hurdle in the treatment plan of cancer. That is why identification of resistant cells at the procedure of a patient treatment saves time and is very much critical for the therapy outcome. The FTIR spectra provide a unique molecular fingerprint that can be interpreted based on the macromolecular biochemistry of the cells. This study suggests that infrared spectroscopy and clustering of data with PCA may represent a simple and precise method for discrimination biochemical pattern of resistant in cell lines. One of the advantages of this tool is to investigate the resistant percent of cancer cells using FTIR. Such technique may bring new tool in cancer diagnosis and stage definition in cancerous tissues. The FTIR data set between 1000 and 3000 cm^{-1} in resistant and sensitive cells correctly classified by PCA model. This region of FTIR data could be consumed as "Biochemical typicality spectra" among resistant and sensitive cell lines. In this region amid I and amid II molecules band have higher difference in sensitive and resistant cells.

Acknowledgment

We thank Mr. Soleymani for computing and Iranian agency of Rayleigh Optics for technical support. This work has been done as a part of Dr. Rezvan Zendeheel PhD thesis in the faculty of pharmacy, SBMU.

References

- (1) Rabik CA and Dolan ME. Molecular mechanisms of resistance and toxicity associated with platinating agents. *Cancer Treat. Rev.* (2007) 33: 9-23.
- (2) Wadkins RM and Roepe PD. Biophysical aspects of P-glycoprotein-mediated multidrug resistance. *Int. Rev. Cytol.* (1997) 171: 121-165.
- (3) Tewari KS and Monk BJ. Gynecologic oncology group trials of chemotherapy for metastatic and recurrent cervical cancer. *Curr. Oncol. Rep.* (2005) 7: 419-34.
- (4) Kartalou M and Essigmann JM. Mechanisms of resistance to cisplatin. *Mutat. Res.* (2001) 478: 23-43.
- (5) Siddik ZH. Cisplatin: mode of cytotoxic action and molecular basis of resistance. *Oncogene* (2003) 22: 7265-79.
- (6) Litman T, Druley TE, Stein WD and Bates SE. From MDR to MXR: new understanding of multidrug resistance systems, their properties and clinical significance. *Cell. Mol. Life Sci.* (2001) 58: 931-959.
- (7) Holzer AK. Cisplatin rapidly down-regulates its own influx transporter hCTR1 in cultured human ovarian carcinoma cells. *Clin. Cancer Res.* (2004) 10: 6744-9.
- (8) Shirazi FH Wong PTT and Goe R. Interaction of cisplatin with cellular macromolecules: A fourier transform infrared spectroscopy study. *Iranian J. Pharm. Res.* (2003) 2: 11-15.
- (9) Katano K. Acquisition of resistance to cisplatin is accompanied by changes in the cellular pharmacology of copper. *Cancer Res.* (2002) 62: 6559-65.
- (10) Safaei R. Abnormal lysosomal trafficking and enhanced exosomal export of cisplatin in drug resistant human ovarian carcinoma cells. *Mol. Cancer Ther.* (2005) 4: 1595-604.
- (11) Ofir K, Kelly S and Yechiel S. Functional and structural characterization of HIV-1 gp41 ectodomain regions in phospholipid membranes suggests that the fusion-active conformation is extended. *J. Mol. Biol.* (2006) 364: 1103-1117.
- (12) Krafft C, Sobottka B and Geiger D. Classification of malignant gliomas by infrared spectroscopic imaging and linear discriminate analysis. *Anal. Bioanal. Chem.* (2007) 387: 1669-1677.
- (13) Hosseini Shirazi F, Vakili N, Abdi K, Farhadi A and Rahimi F. Fourier-Transform Infrared Spectroscopic comparison of normal and malignant cervical tissue. *Iranian J. Pharm. Res.* (2005) 6: 107-113.
- (14) Afrakhteh M, Khodakarami N, Moradi A, Alavi E and Hosseini Shirazi F. Papanicolau smear diagnoses in Shohada Hospital. *J. Fam. Reproduc. Health* (2007) 1: 75-79.
- (15) Li GZ, Bu HL, Mary Qu Y and Xue-Qiang Z. Selecting subsets of newly extracted features from PCA and PLS in microarray data analysis. *BMC Genomics* (2008) 9: 1-15.
- (16) Safaak H. Spectroscopic study for detection and grading of breast carcinoma *in-vitro*. *Aus. J. Basic Appl. Sci.* (2009) 3: 2419-2428.
- (17) Baker MJ, Gazi E, Brown MD, Shanks JH, Gardner P and Clarke NW. FTIR-based spectroscopic analysis in the identification of clinically aggressive prostate cancer. *Br. J. Cancer* (2008) 99: 1859-1866.
- (18) Adam J. Characterization of human corneal stem cells by synchrotron infrared micro-spectroscopy. *Mol. Vision* (2007) 13: 237-42.
- (19) Katia Z, Christine RN and Frederic M. E6 proteins from diverse Papilloma viruses self-associate both *in-vitro* and *in-vivo*. *J. Mol. Biol.* (2010) 396: 90-104.
- (20) Lugli E, Pinti M, Nasi M, Troiano L and Ferraresi R. Subject classification obtained by cluster analysis and principal component analysis applied to flow cytometric data. *Cytometry Part A* (2007) 71: 334-344.
- (21) Maureen CM, Marianne D and Breeanna R. Neural network analyses of infrared spectra for classifying cell wall architectures. *Plant Physiol.* (2007) 143: 1314-1326.

This article is available online at <http://www.ijpr.ir>
