

Relationship of Dopamine of the Nucleus Accumbens with Intra-infralimbic Apomorphine Microinjection

Abbas Alimoradian¹, Javad Sajedianfard^{*2}, Faegheh Baha-aldini Beigy³, Mohammad Reza Panjehshahin⁴, Ali Akbar Owji⁵

¹ Department of Pharmacology, School of Medicine, Arak University of Medical Sciences, Arak, Iran

² Department of Physiology, School of Veterinary Medicine, Shiraz University, Shiraz, Iran

³ Department of Pharmacology, School of Medicine, Shiraz University of Medical Sciences, Shiraz, Iran; E-mail: bzarandi@hotmail.com

⁴ Natural & Medicinal Chemistry Research Center and Department of Pharmacology, School of Medicine, Shiraz University of Medical Sciences, Shiraz, Iran

⁵ Department of Biochemistry, Shiraz University of Medical Sciences, Shiraz, Iran

ARTICLE INFO

Article type:
Original article

Article history:
Received: Jul 20, 2012
Accepted: Nov 28, 2012

Keywords:
Apomorphine
Dopamine
Microdialysis
The nucleus accumbens
The prefrontal cortex

ABSTRACT

Objective(s): The dopamine level of the nucleus accumbens changes during some stereotyped behaviors. To study dopamine level of the nucleus accumbens in intra infralimbic apomorphine-induced climbing, microdialysis probes were implanted into the nucleus accumbens shell of male Sprague Dawley rats weighting 275–400 g.

Materials and Methods: The rats were divided into two groups (apomorphine and control) of least eleven rats in each group. Apomorphine at dose of 5 µg/0.5 µl or its vehicle was microinjected into the infralimbic in apomorphine and control groups respectively. Then, changes in dopamine levels in the nucleus accumbens shell were monitored. The concentration of dopamine was measured by High-Performance Liquid Chromatography-Electrochemical (HPLC-ECD). Finally, the stereotyped behaviors were recorded.

Results: The mean of dopamine levels for all of after microinjection period in control and drug groups were 450% and 150% respectively compared to those of before microinjection period. However, there was no significant difference between groups of apomorphine and control. In addition, the return of dopamine level to the baseline was faster in apomorphine group than the control group.

Conclusion: The intra infralimbic apomorphine -induced climbing at dose of 5 µg/0.5 µl was not modulated via the increase of dopamine level in the nucleus accumbens area.

► Please cite this paper as:

Alimoradian A, Sajedianfard J, Baha-aldini Beigy F, Panjehshahin MR, Owji AA. Microdialysis Study of Dopamin Level of the Nucleus Accumbens in the Intra-infralimbic Apomorphine Microinjection in Rats. Iran J Basic Med Sci; 2013; 16: 743-750.

Introduction

The pathological changes in the prefrontal cortex are involved in schizophrenia (1-4). Dysfunction of mesocortical dopamine inputs to the prefrontal cortex may underlie positive and negative symptoms associated with the schizophrenia (1, 5-7).

The medial prefrontal cortex is one of the regions of the prefrontal cortex involved in higher cognitive functions (4, 8, 9). The medial prefrontal cortex is not a homogenous structure (4, 8, 10) and can be subdivided into at least three subareas: the infralimbic, prelimbic and anterior cingulate with different intrinsic organizations, functions and distinct afferent- efferent connections (4, 11).

The dopamine transmission of nucleus

accumbens integrates a wide range of limbic and motor information (12-18). Based on the phasic dopamine transmission, the nucleus accumbens is subdivided into two heterogeneous compartments of shell and core (12, 19-21).

Due to the importance of the medial prefrontal cortex in the pathogenesis of schizophrenia, the pathophysiologic study models have focused on the cortical dysregulation on subcortical dopamine neurotransmission (22). In addition, since microinjection of a dopamine agonist such as apomorphine into the brain area is a straight approach for investigation of the role of each area in stereotyped behaviors.

*Corresponding author: Javad Sajedianfard; Department of Physiology, School of Veterinary Medicine, Shiraz University, Shiraz, Iran Tel: +98-711- 613 8622; Fax: +98-711 228 6940; email: sajedian@shirazu.ac.ir

It has been previously shown that the microinjection of apomorphine in the infralimbic could induce climbing significantly at dose of 5 µg/0.5 µl (23). Therefore, in this study we investigated the behavioral effects of microinjection of apomorphine in three subareas of the medial prefrontal cortex.

It is important to know whether induction of climbing via microinjection of apomorphine is a behaviors related to the medial prefrontal cortex or mediated by dopamine transmission of the nucleus accumbens via its relation with the medial prefrontal cortex. In the current study, apomorphine was therefore microinjected into the infralimbic subarea of the medial prefrontal cortex and released dopamine was measured by microdialysis method in the shell of nucleus accumbens to investigate if there was any possible involvement of the shell of nucleus accumbens in intra infralimbic apomorphine - induced climbing.

Materials and Methods

Ethics and Animals

The protocol used in this study was approved by the Ethics Committee of Shiraz University of Medical Sciences. Eleven male Sprague Dawley rats (275–400 g) free access to food and water were used in each group for the experiments.

Drugs and Materials

Apomorphine, 3, 4-dihydroxyphenylalanine (DOPA), Dopamine, Mandelic Acid and Tyrosine (all of them, Sigma, USA),

Ascorbic acid, calcium chloride, glucose, magnesium sulfate, potassium chloride, sodium bicarbonate, sodium chloride, sodium dihydrogen phosphate and sodium hydroxide (all of them, Merck, Germany),

Dialysis membrane, cut-off =6000D, fused silica connecting tube with Inner diameter (ID) =75 µm and outer diameter (OD) =150 µm (Eicom Company, Japan), Acetonitrile (Caledon, Canada), ketamine (Rotexmedica, Germany), xylazine (Alfasan, Netherlands), perchloric Acid (Hopkin & William, England), polyethylene tubing 10 and 20 (Stoelting, USA).

Preparation of microdialysis probe

Microdialysis probes were generated based on the Sharp and Zetterstrom method under stereomicroscope (Ziss, Germany) (24, 25). The dialysis membrane was left as much as 2 mm as the active size free to expose to the nucleus accumbens shell (26-32). Since the dialysis probes were "custom-made" some qualifications tests were performed. Final probes were then tested before the implantation in the rat. In this manner, the ability of probes for recovery of dopamine was determined as the *in vitro* environment. Their recovery was about 25%.

Implantation of probe and guide cannula

The rats were anesthetized by Ketamine + Xylazine (60 and 8 mg/kg respectively, IP intraperitoneal). The guide cannulas and probes were then implanted in the infralimbic and the nucleus accumbens shell respectively by stereotaxis (Stoelting, Wood Dale, IL, USA). The coordinate of the infralimbic was (AP, +3.2; L, +0.7; DV, - 5.4) and for probes into the nucleus accumbens shell at angle 15° from vertical was (AP, +1.7; L, +1.2; DV, - 8.2) (33).

Microinjection, microdialysis and behavioral recording

The microdialysis experiments were performed 24 hr after the surgery. Apomorphine at dose of 5 µg/0.5 µl and 0.5 µl ascorbic acid 0.1% (as solvent of apomorphine and stabilizer) was delivered into the infralimbic as drug group and control or vehicle group respectively. The stereotyped behaviors were recorded as well (23) followed by the perfusion of probes with artificial cerebrospinal fluid (ACSF) at a flow rate of 2 µl/min (15, 34, 35) by microinjection pump (model 22, Harvard Apparatus, USA). In the next step, the fractions were collected in Eppendorf tube prefilled with 10 µl of perchloric acid 0.1mol as stabilizing agent (25, 36) each 20 min (15, 34, 37).

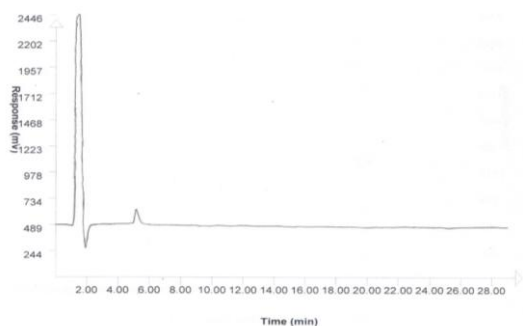
The compositions of ACSF include (in mmol) NaCl 114, KCl 3, CaCl₂ 1, MgSO₄ 2, NaH₂PO₄ 1.25, NaHCO₃ 26, NaOH 1 and Glucose 10, pH 7.4 (38).

Dialysis procedure was 180 min divided into two parts, 60 and 120 min as before and after microinjections (34, 37). The samples were finally stored at -80°C until analysis by High-Performance Liquid Chromatography-Electrochemical (HPLC-ECD).

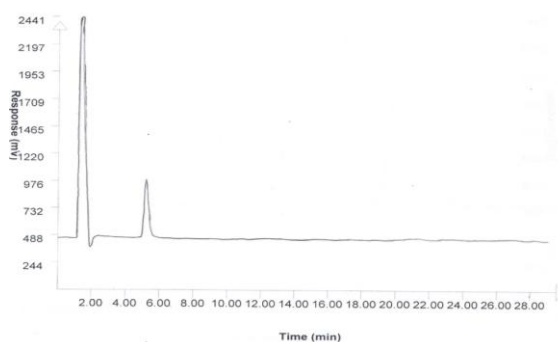
HPLC-ECD analysis

The collected samples were analyzed by HPLC-ECD (model 460, Waters, USA). The mobile phase consisting of 100 mmol NaH₂PO₄ in HPLC grade water and 1% acetonitrile (pH3) was delivered into the reverse phase column (Reprosil-Pur C18-AQ 250 mm×3 mm ID, Dr A Maisch, Germany) at a flow rate of 1 ml/min (39, 40). The used method for microdialysis experiments and HPLC including microdialysis membrane cutoff, mobile phase and column were specific to the detection of dopamine in samples and those that dopamine metabolites or other neurotransmitters were not observed by HPLC detectors (Figure 1). However; in order to show if the aforementioned methodology has the ability to separate and detect any probable metabolites in samples, one standard artificial mixture of dopamine and its metabolites were injected into HPLC column (Figure 2).

The analysis of chromatograms was done by the Peak track software (Peak track, Capital HPLC Limited, England). The area under the curve (AUC) of standard solutions was used for the comparison of dopamine concentrations in the samples.



a: Apomorphine group



b: Control group

Figure 1. A chromatogram of a sample from apomorphine group (a) and control group (b) after microinjection DA: Dopamine

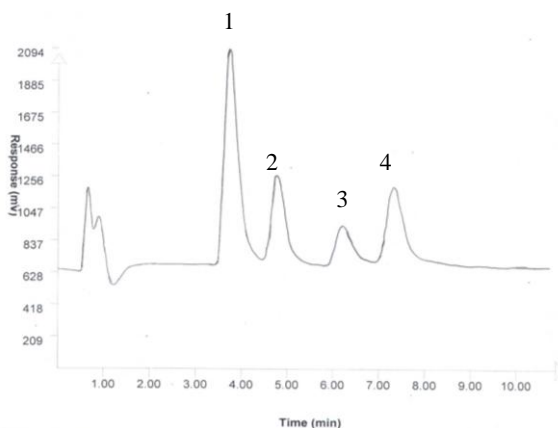


Figure 2. The chromatogram of peaks of some probable metabolites were detected by HPLC in a mixture of standards
 1: DOPA; 150 ng/ml, Retention time: 3-4 min
 2: Dopamine; 150 ng/ml, Retention time: 4.5-5.5 min
 3: Tyrosine; 10 µg/ml, Retention time: 6.5 min
 4: Mandelic acid; 150 ng/ml, Retention time: 7-8 min
 Volume of injection: 20 µl of mixture of standards

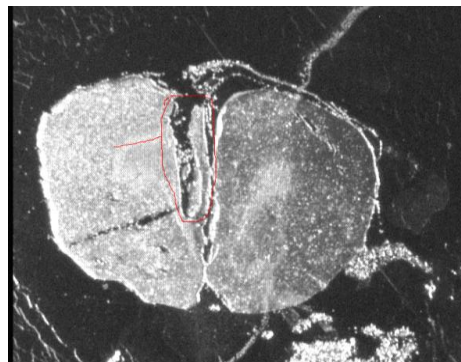
Statistical analysis

The analysis of data was performed by SPSS ver. 13. The data were analyzed by two and one way repeated-measures ANOVA using time as a repeated factor followed by LSD (Least Significance

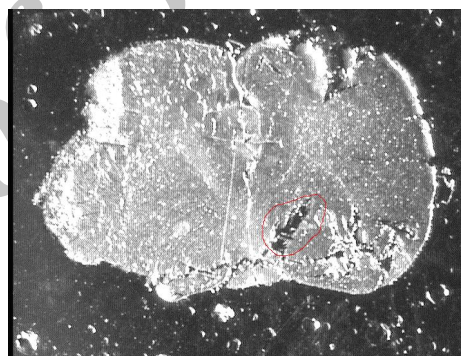
Difference) test as post hoc. The Significance level was set at $P < 0.05$.

Histological verification

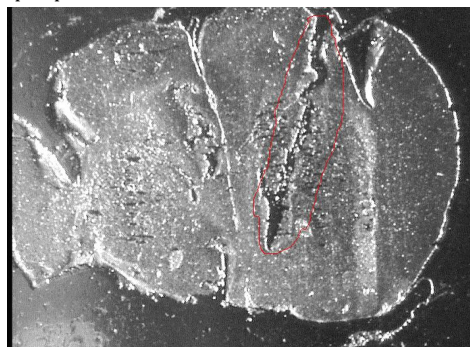
At the end of each test, serial sections were provided coronally by a microtome (model 1512, Leitz, Germany) and the positions of cannula and probe tracing were compared with the rat brain atlas (33) (Figure 3).



a: The infralimbic



b: The tip of probe in the nucleus accumbens shell



c: The probe tracing in the nucleus accumbens shell

Figure 3. Stereomicroscopic photos of coronal section for cannula tracing at the level of the infralimbic (a), tip of probe in the nucleus accumbens shell (b) and probe tracing in the nucleus accumbens shell (c)

Results

In this study, the mean of dopamine concentration of three samples prior to the microinjection period was considered as baseline

level for each probe. The percentage of changes of dopamine concentration of samples during after microinjection period was estimated related to its own baseline level. The time-course graph presents the percentage of changes in extracellular dopamine from the baseline level (Figure 4). It was observed that the baseline values for the apomorphine group was a little below 100% of the mean basal value. Nevertheless, it was concluded that it is quite obvious that it doesn't matter though related to the normal variation of this physiologic parameter. Two way repeated-measures ANOVA using time as a repeated measure factor showed that the difference among dopamine concentrations of samples before any microinjection was not significant ($F(2, 42) = 0.02$; NS).

Two way repeated-measures ANOVA using time as a repeated measure factor showed that the parameter of time was significant ($F(8, 168) = 5.084$; $P < 0.01$). However, there was not any significant difference between two groups of apomorphine and control ($F(1, 21) = 0.259$). There was not any significant interaction between time and treatment (control and apomorphine) factors ($F(8, 168) = 0.508$).

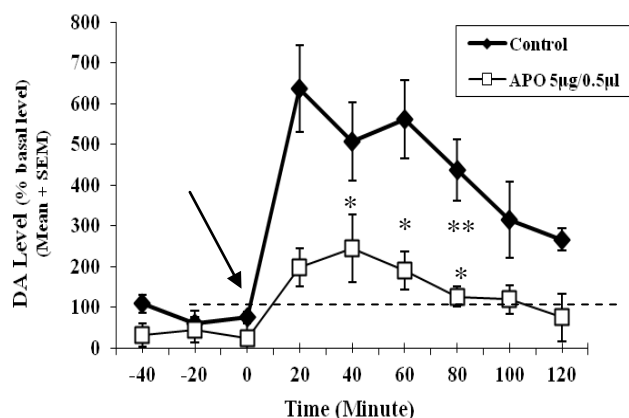


Figure 4. Time-course graph of changes of percent of extracellular dopamine level in the nucleus accumbens shell during 180 min. Each point represents the mean of percent of extracellular dopamine level related to the mean of basal level \pm SEM. Each line represents time-course graph of percent of dopamine level for each group.

Control: Ascorbic acid 0.1% as apomorphine vehicle; 0.5 μ l microinjected into the infralimbic.

APO: Apomorphine (5 μ g/0.5 μ l/rat); microinjected into the infralimbic.

DA: Dopamine

Arrows show time of microinjection

Dotted line shows the mean of basal level

Before microinjection period: -40, -20th minute and zero minute marked on horizontal axis

*: Significant at compared to the ninth 20 (120th minute) minutes

** : Significant at compared to the seventh (80th minute) and ninth 20 (120th minute) minutes

N=11-12 in each group

$P < 0.05$

One-way-repeated measures ANOVA for each group of control or apomorphine using time as a repeated measure factor showed that factor of time

was not significant for the control group, but it was significant for apomorphine group ($F(3, 34) = 2.857$; $P < 0.05$).

LSD test as *post hoc* revealed that there were significant differences in changes of percent of dopamine level among the fourth (20th min), fifth (40th min) and sixth (60th min) 20-min episodes with ninth 20-min episode (120th min), also between sixth (60th min) and seventh 20-min (80th min) episode ($P < 0.05$) (Figure 4). In addition, no significant stereotyped behavior such as climbing due to the microinjection of apomorphine was observed.

Discussion

The nucleus accumbens (ventral striatum) is a heterogeneous area and has been subdivided into two different compartments, a medioventral shell and a laterodorsal core. The nucleus accumbens shell is involved in the control of motivation, emotional responses and most functionally reactive to the stress and abused drugs (21, 41).

Furthermore, dorsal and ventral areas of the medial prefrontal cortex preferentially innervate the core and shell of nucleus accumbens respectively (42). Therefore, the infralimbic projects preferentially to the nucleus accumbens shell (4, 8, 43-45) and this subarea of the medial prefrontal cortex affect on dopamine release in the nucleus accumbens shell negatively (2, 46, 47). The different behavioral effects of microinjection of some doses of apomorphine into three subterritories of the medial prefrontal cortex were previously studied (23). The behavior of significant climbing was observed at the dose of 5 μ g/0.5 μ l of apomorphine after its microinjection into the infralimbic subarea of medial prefrontal cortex. The microdialysis study was performed to study the changes of dopamine level in the nucleus accumbens at this dose of apomorphine.

In the present study, it was observed that the microinjection of either apomorphine or ascorbic acid 0.1% as apomorphine vehicle into the infralimbic subarea significantly increases the dopamine level in the nucleus accumbens shell (Figure 4).

Apomorphine as a nonselective dopamine agonist is a non-specific dopamine agonist for dopamine D1 and dopamine D2-like receptors (48, 49). Moreover, dopamine releases in the nucleus accumbens is affected by many factors such as abused drugs, stress may be regulated by other brain areas such as the prefrontal cortex. Handling is one of factors stimulating dopamine transmission and its release in the nucleus accumbens (50). In the present study, rats were handled gently for microinjection by Hamilton syringe during microdialysis experiments. This minimum handling would induce stress in free behaving rats and could induce dopamine release in the nucleus accumbens shell sensitive to the external emotional stimulants such as handling-stress.

It has been reported that the increase of dopamine transmission in the ventral or deeper parts of medial prefrontal cortex including the prelimbic and infralimbic area has an inhibitory effect on turn-over of dopamine transmission in the mesolimbic system and its response to stimulants (4, 10, 22, 26, 27, 51, 52-57). The behavioral and neurochemical responses of the nucleus accumbens shell *e.g.* locomotor activity and changes of dopamine concentrations to stress and stimulants are dampened by the concurrent activation of meso-prefrontal cortex dopamine neurons (26, 42, 55, 58). Therefore, dopamine depletion in the medial prefrontal cortex has potentiated stress-induced increase in extracellular dopamine in the nucleus accumbens shell (59). Thus, the reduction of dopamine levels in the prefrontal cortex increases dopamine release in the nucleus accumbens, whereas an increase dopamine levels in the prefrontal cortex attenuates the nucleus accumbens dopamine release (27, 36, 51, 55, 60-62). This inhibitory effect of the medial prefrontal cortex dopamine is directly via inhibition of excitatory amino acid neurons projecting to subcortical sites and indirectly by dopamine -mediated increases in γ -aminobutyric acid (GABA) release (56). The neurochemical and electrophysiological findings show that dopamine in the medial prefrontal cortex generally increases spontaneous GABA release and spontaneous firing of GABAergic neurons. Therefore, the medial prefrontal cortex dopamine exerts a (tonic) stimulatory effect on GABAergic interneurons thereby inhibiting glutamatergic pyramidal cells projecting to the nucleus accumbens and ventral tegmental area (4). It is worth mentioning that, dopamine depletion decreases the activity of GABA interneurons and triggers the activity of efferents to the nucleus accumbens including the reactivity of the mesolimbic dopaminergic system to environmental stimuli (1, 10, 26, 27, 37, 50, 55, 58). Therefore, the aforementioned reports are in consistent with the present finding (Figure 4) which depicts an increase of dopamine release in the nucleus accumbens shell. Handling stress due to the microinjection was less in drug group which in rats the received $5\mu\text{g}/0.5\mu\text{l}$ of apomorphine compared to the control group that the rats received the vehicle. The mean of dopamine level for all of after microinjection period in control and drug groups was 450% and 150% respectively compared to those of before microinjection period. The increase of dopaminergic activity in the infralimbic by apomorphine-microinjection at dose of $5\mu\text{g}/0.5\mu\text{l}$ as dopamine agonist decreased the nucleus accumbens shell response as dopamine release to the handling stress microinjection compared to the of control group. It has been reported that changes in dopamine neurotransmission in the prefrontal cortex do not

have any effect on baseline of dopamine activity in subcortical dopamine systems such as the nucleus accumbens (1, 2, 22, 63, 64). Thus, amphetamine injections into the medial prefrontal cortex were found to reduce hyperlocomotion induced by intra-nucleus accumbens injections of amphetamine without producing an effect on locomotion by itself (4). These reports are also consistent with the present data showing no significant difference between the response of drug and control groups. Because the rats were handled very gently for microinjection, procedure and this handling-induced stress was not as effective as powerful environmental stimuli that could induce significant difference between the drug and control groups. As a result, changes in dopamine neurotransmission in the prefrontal cortex by apomorphine microinjection could not change dopamine release in the nucleus accumbens significantly.

The findings of this study with no significant change in the dopamine neurotransmission of the nucleus accumbens shell after microinjection of apomorphine into the infralimbic vs. control group can also confirm the results of previous reports. With respect to another study (23), it seemed that the effect of apomorphine-microinjection into the infralimbic at dose of $5\mu\text{g}/0.5\mu\text{l}$ on behaviors such as climbing was a direct effect is not via the nucleus accumbens system. Thus, apomorphine at this dose induced climbing directly through the stimulation of dopamine receptors in the infralimbic and its effect was not related to the modulation of subcortical systems. If the effect of microinjection of apomorphine into the infralimbic at dose of $5\mu\text{g}/0.5\mu\text{l}$ on climbing was an indirect effect and related to the mesolimbic dopaminergic system. This therefore would induce a significant increase in dopamine release in the nucleus accumbens shell. Since these significant changes in dopamine activity of the mesolimbic system were not observed, the effect of apomorphine-microinjection into the infralimbic in previous report (23) at dose of $5\mu\text{g}/0.5\mu\text{l}$ on behaviors such as climbing could be a direct effect related to modulation of dopamine receptors of the infralimbic subarea and not via the nucleus accumbens.

The changes of dopamine release after microinjection were significant in the drug group. The microinjection-handling stress has not been excessively influential to induce any significant differences of dopamine release between two groups in the nucleus accumbens, but because of the inhibitory effect of dopamine in the medial prefrontal cortex on dopamine neurotransmission of the nucleus accumbens, the return of dopamine level to baseline near to its level before microinjection was faster in drug group than that of control group (Figure 4). The increase of dopaminergic activity in the infralimbic by apomorphine microinjection may cause an increase of dopamine release in the nucleus accumbens in drug

group. This did not last so long after microinjection and compared to the control group was significantly decreased to the baseline level faster.

Microdialysis probes could not keep their dialysis ability more than 24h after implantation (25); therefore, dopamine collection should be performed only 24 hr after the surgery. No significant stereotyped behaviors were observed in climbing due to the microinjection of apomorphine during the short time after surgery. It should be noted that it was a technical limitation to this work. Considering the heterogeneity of the medial prefrontal cortex, it is remained to determine the role of other subregions of the medial prefrontal cortex including the prelimbic and anterior cingulate on extracellular dopamine level in subcortical systems. Further research is necessary to evaluate other sub-territories and other doses of apomorphine.

Conclusion

This study showed that intra infralimbic apomorphine-induced climbing at dose of 5 µg/0.5 µl is not modulated via the increase of dopamine level in the nucleus accumbens area. This behavior may be a direct effect related to the modulation of dopamine receptors of the infralimbic subarea and not via the nucleus accumbens.

Acknowledgment

The results described in this paper were part of the student thesis. The authors would like to thank the Office of Vice-Chancellor for Research in Shiraz University of Medical Sciences, Shiraz, Iran, for financial support of this project. In addition, we are grateful to Dr N Shokrpour for her helpful comments in scientific writing of the manuscript.

References

1. Broersen LM, Heinsbroek RPW, de Bruin, JPC, Olivier B. Effects of local application of dopaminergic drugs into the medial prefrontal cortex of rats on latent inhibition. *Biol Psychiatry* 1996; 40:1083-1090.
2. Goldstein M, Deutch AY. Dopaminergic mechanisms in the pathogenesis of schizophrenia. *FASEB J* 1992; 6:2413-2421.
3. Murphy BL, Arnsten AFT, Goldman-Rakic PS, Roth RH. Increased dopamine turnover in the prefrontal cortex impairs spatial working memory performance in rats and monkeys. *Proc Natl Acad Sci USA* 1996; 93:1325-1329.
4. Tzschentke TM. Pharmacology and behavioral pharmacology of the mesocortical dopamine system. *Prog Neurobiol* 2001; 63:241-320.
5. Henze DA, Gonzalez-Burgos GR, Urban NN, Lewis DA, Barrionuevo G. Dopamine increases excitability of pyramidal neurons in primate prefrontal cortex. *J Neurophysiol* 2000; 84:2799-2809.
6. Phillips AG, Ahn S, Floresco SB. Magnitude of dopamine release in medial prefrontal cortex predicts accuracy of memory on a delayed response task. *J Neurosci* 2004; 24:547-553.
7. Seamans JK, Yang CR. The principal features and mechanisms of dopamine modulation in the prefrontal cortex. *Prog Neurobiol* 2004; 74:1-57.
8. Heidbreder CA, Groenewegen HJ. The medial prefrontal cortex in the rat: evidence for a dorso-ventral distinction based upon functional and anatomical characteristics. *Neurosci Biobehav Rev* 2003; 27:555-579.
9. Marcotte ER, Pearson DM, Srivastava LK. Animal model of schizophrenia: a critical review. *J Psychiatry Neurosci* 2001; 26:395-410.
10. Hedou G, Homberg J, Feldon J, Heidbreder CA. Expression of sensitization to amphetamine and dynamics of dopamine neurotransmission in different laminae of the rat medial prefrontal cortex. *Neuropharmacology* 2001; 40:366-382.
11. Tzschentke TM, Schmidt WJ. Functional heterogeneity of the rat medial prefrontal cortex: effects of discrete subarea-specific lesions on drug induced conditioned place preference and behavioural sensitization. *Eur J Neurosci* 1999; 11:4099-4109.
12. Bassareo V, Di Chiara G. Differential responsiveness of dopamine transmission to food-stimuli in nucleus accumbens shell/core compartments. *Neuroscience* 1999; 89:637-641.
13. Charara A, Grace AA. Dopamine receptor subtypes selectively modulate excitatory afferents from the hippocampus and amygdala to rat nucleus accumbens neurons. *Neuropsychopharmacology* 2003; 28:1412-1421.
14. Di Chiara G, Imperato A. Drugs abused by humans preferentially increase synaptic dopamine concentrations in the mesolimbic system of freely moving rats. *Proc Natl Acad Sci USA* 1998; 85:5274-5278.
15. Narita M, Takagi M, Aoki K, Kuzumaki N, Suzuki T. Implication of Rho-associated kinase in the elevation of extracellular dopamine levels and its related behaviors induced by methamphetamine in rats. *J Neurochem* 2003; 86:273-282.
16. Ventura R, Cabib S, Alcaro A, Orsini C, Puglisi-Allegra S. Norepinephrine in the prefrontal cortex is critical for amphetamine-induced reward and mesoaccumbens dopamine release. *J Neurosci* 2003; 23:1879-1885.
17. You ZB, Tzschentke TM, Brodin E, Wise RA. Electrical stimulation of the prefrontal cortex increases cholecystokinin, glutamate, and dopamine release in the nucleus accumbens: an *in vivo* microdialysis study in freely moving rats. *J Neurosci* 1998; 18:6492-6500.
18. Hosseini M, Alaei H A, Eslamizade MJ, Saffarzade F. Effect of morphine self-administration on water and food intake in rat. *Iran J Basic Med Sci* 2007; 10:169-175.
19. Ananth J, Burgoyne KS, Gadasalli R, Aquino S. How do the atypical antipsychotics work?. *J Psychiatry Neurosci* 2001; 26:385-394.
20. Heidbreder C, Feldon J. Amphetamine-induced neurochemical and locomotor responses are expressed differentially across the anteroposterior axis of the core and shell subterritories of the nucleus accumbens. *Synapse* 1998; 29:310-322.
21. Sellings LHL, Clarke PBS. Segregation of amphetamine reward and locomotor stimulation between nucleus accumbens medial shell and core. *J Neurosci* 2003; 23:6295-6303.

22. Karreman M, Moghaddam B. The prefrontal cortex regulates the basal release of dopamine in the limbic striatum: an effect mediated by ventral tegmental area. *J Neurochem* 1996; 66:589-598.
23. Alimoradian A, Baha-aldini Beigy F, Sajedianfard J, Panjehshahin MR. The study of apomorphine effects and heterogeneity in the medial prefrontal cortex on dopaminergic behaviors of rats. *Iran J Basic Med Sci* 2009; 11:205-214.
24. Sajedianfard J, Khatami S, Semnanian S, Naghdi N, Jorjani M. *In vivo* measurement of noradrenaline in the locus coeruleus of rats during the formalin test: A microdialysis study. *Eur J Pharmacol* 2005; 512:153-156.
25. Sharp T, Zetterstrom T. *In vivo* measurement of monoamine neurotransmitter release using brain microdialysis. In: Stampford JA. editor), *Monitoring neuronal activity: A practical approach*. London: Oxford University Press; 1992.p.147-179.
26. Beyer CE, Steketee JD. Intra-medial prefrontal cortex injection of quinpirole, but not SKF 38393, blocks the acute motor-stimulant response to cocaine in the rat. *Psychopharmacology* 2000; 151:211-218.
27. Chen NNH, Pan WHT. Regulatory effects of D2 receptors in the ventral tegmental area on the mesocorticolimbic dopaminergic pathway. *J Neurochem* 2000; 74:2576-2582.
28. Ichikawa J, Meltzer HY. *R*(+)-8-OH-DPAT, a serotonin_{1A} receptor agonist, potentiated *S*(-)-sulpiride-induced dopamine release in rat medial prefrontal cortex and nucleus accumbens but not striatum. *J Pharmacol Exp Ther* 1999; 291:1227-1232.
29. Jackson ME, Moghaddam B. Amygdala regulation of nucleus accumbens dopamine output is governed by the prefrontal cortex. *J Neurosci* 2001; 21:676-681.
30. Klitenick MA, Taber MT, Fibiger HC. Effects of chronic haloperidol on stress-and stimulation-induced increases in dopamine release: tests of the depolarization block hypothesis. *Neuropsychopharmacology* 1996; 15:424-428.
31. Taber MT, Das S, Fibiger HC. Cortical regulation of subcortical dopamine release: mediation via the ventral tegmental area. *J Neurochem* 1995; 65:1407-1410.
32. Tolu P, Masi F, Leggio B, Scheggi S, Tagliamonte A, De Montis MG, *et al*. Effects of long-term acetyl-L-carnitine administration in rats: I. increased dopamine output in mesocorticolimbic areas and protection toward acute stress exposure. *Neuropsychopharmacology* 2002; 27:410-420.
33. Paxinos G, Watson C. *The rat brain in stereotaxic coordinates*. 3rd ed. New York: Academic Press; 1997.
34. Ventura R, Alcaro A, Mandolesi L, Puglisi-Allegra S. *In vivo* evidence that genetic background controls impulse-dependent dopamine release induced by amphetamine in the nucleus accumbens. *J Neurochem* 2004; 89:494-502.
35. Amanlou M, Siadat SD, Norouzian D, Aghasadeghi MR, Fathi-Moghaddam H, Piryaee M, *et al*. Effect of dexamethasone on striatal neurotransmissions in the rats subjected to parkinson's disease animal model. *Iran J Basic Med Sci* 2011; 14:107-115.
36. Balla A, Sershen H, Serra M, Koneru R, Javitt DC. Subchronic continuous phencyclidine administration potentiates amphetamine-induced frontal cortex dopamine release. *Neuropsychopharmacology* 2003; 28:34-44.
37. Ventura R, Alcaro A, Cabib S, Conversi D, Mandolesi L, Puglisi-Allegra S. Dopamine in the medial prefrontal cortex controls genotype-dependent effects of amphetamine on mesoaccumbens dopamine release and locomotion. *Neuropsychopharmacology* 2004; 29:72-80.
38. Azizi Malekabadi H, Alaei H, Oryan S. The effect of exercise (Treadmill running) on glutamate concentration variation of hippocampal dentate gyrus in the intact and morphine dependent male rats. *Iran J Basic Med Sci* 2007; 9:250-259.
39. Kosowski AR, Liljequist S. The NR2B-selective *N*-Methyl-D-aspartate receptor antagonist Ro 25-6981 [(±)-(R*,S*)-α-(4-Hydroxyphenyl)-β-methyl-4-phenylmethyl-1-piperidine Propanol] potentiates the effect of nicotine on locomotor activity and dopamine release in the nucleus accumbens. *J Pharmacol Exp Ther* 2004; 311:560-567.
40. Lindblom J, Opmane B, Mutulis F, Mutule I, Petrovska R, Klusa V, *et al*. The MC4 receptor mediates α-MSH induced release of nucleus accumbens dopamine. *Neuroreport* 2001; 12:2155-2158.
41. Barrot M, Marinelli M, Abrous DN, Rougé-Pont F, Le Moal M, Piazza PV. Functional heterogeneity in dopamine release and in the expression of Fos-like proteins within the rat striatal complex. *Eur J Neurosci* 1999; 11:1155-1166.
42. King D, Finlay JM. Loss of dopamine terminals in the medial prefrontal cortex increased the ratio of DOPAC to DA in tissue of the nucleus accumbens shell: role of stress. *Brain Res* 1997; 767:192-200.
43. Ongur D, Price JL. The organization of networks within the orbital and medial prefrontal cortex of Rats, monkeys and humans. *Cereb Cortex* 2000; 10:206-219.
44. Porrino LJ, Lyons D. Orbital and medial prefrontal cortex and psychostimulant abuse: studies in animal models. *Cereb Cortex* 2000; 10:326-333.
45. Sharp T, Zetterstrom T, Ljungberg T, Ungerstedt U. A direct comparison of amphetamine-induced behaviours and regional brain dopamine release in the rat using intracerebral dialysis. *Brain Res* 1987; 401:322-330.
46. Gray JA. Integrating Schizophrenia. *Schizophr Bull* 1998; 24:249-266.
47. Hedou G, Feldon J, Heidbreder CA. Effects of cocaine on dopamine in subregions of the rat prefrontal cortex and their efferents to subterritories of the nucleus accumbens. *Eur J Pharmacol* 1999; 372 (2): 143-155.
48. Fetsko LA, Xu R, Wang Y. Alterations in D1/D2 synergism may account for enhanced stereotypy and reduced climbing in mice lacking dopamine D2L receptor. *Brain Res* 2003; 967:191-200.
49. Presti MF, Gibney BC, Lewis MH. Effects of intrastriatal administration of selective dopaminergic ligands on spontaneous stereotypy in mice. *Physiol Behav* 2004; 80:433-439.
50. Feenstra MGP, Botterbiom MHA, van Uum JFM. Local activation of metabotropic glutamate receptors inhibits the handling-induced increased release of dopamine in the nucleus accumbens but not that of dopamine or noradrenaline in the prefrontal cortex: comparison with inhibition of ionotropic receptors. *J Neurochem* 1998; 70:1104-1113.
51. del Arco A, Mora F. Glutamate-dopamine *in vivo* interaction in the prefrontal cortex modulates the release of dopamine and acetylcholine in the nucleus

accumbens of the awake rat. *J Neural Transm* 2005; 112:97-109.

52. Grobin AC, Deutch AY. Dopaminergic regulation of extracellular γ -Aminobutyric Acid levels in the prefrontal cortex of the rat. *J Pharmacol Exp Ther* 1998; 285:350-357.

53. Jackson ME, Frost AS, Moghaddam B. Stimulation of prefrontal cortex at physiologically relevant frequencies inhibits dopamine release in the nucleus accumbens. *J Neurochem* 2001; 78:920-923.

54. Matsumoto M, Kanno M, Togashi H, Ueno K, Otani H, Mano Y, *et al*. Involvement of GABA-A receptors in the regulation of the prefrontal cortex on dopamine release in the rat dorsolateral striatum. *Eur J Pharmacol* 2003; 482:177-184.

55. Mitchell JB, Gratton A. Partial dopamine depletion of the prefrontal cortex leads to enhanced mesolimbic dopamine release elicited by repeated exposure to naturally reinforcing stimuli. *J Neurosci* 1992; 12:3609-3618.

56. Sorg BA, Li NA, Wu WR. Dopamine D1 receptor activation in the medial prefrontal cortex prevents the expression of cocaine sensitization. *J Pharmacol Exp Ther* 2001; 297:501-508.

57. Zavitsanou K, Cranney J, Richardson R. Dopamine antagonists in the orbital prefrontal cortex reduce prepulse inhibition of the acoustic startle reflex in the rat. *Pharmacol Biochem Behav* 1999; 63:55-61.

58. Doherty MD, Gratton A. Medial prefrontal cortical

D1 receptor modulation of the meso-accumbens dopamine response to stress: an electrochemical study in freely-behaving rats. *Brain Res* 1996; 715:86-97.

59. King D, Zigmond MJ, Finlay JM. Effects of dopamine depletion in the medial prefrontal cortex on the stress-induced increase in extracellular dopamine in the nucleus accumbens core and shell. *Neuroscience* 1997; 77:143-153.

60. Carr DB, Sesack SR. Projections from the rat prefrontal cortex to the ventral tegmental area: target specificity in the synaptic associations with mesoaccumbens and mesocortical neurons. *J Neurosci* 2000; 20:3864-3873.

61. Thompson TL, Moss RL. In vivo stimulated dopamine release in the nucleus accumbens: modulation by the prefrontal cortex. *Brain Res* 1995; 686:93-98.

62. Zhu ZT, Wu WR, Fu Y, Jin GZ. I-stepholidine facilitates inhibition of mPFC DA receptors on subcortical NAc DA release. *Acta Pharmacol Sin* 2000; 21:663-667.

63. Deutch AY. The regulation of subcortical dopamine systems by the prefrontal cortex: interactions of central dopamine systems and the pathogenesis of schizophrenia. *J Neural Transm Suppl* 1992; 36:61-89.

64. Deutch AY, Clark WA, Roth RH. Prefrontal cortical dopamine depletion enhances the responsiveness of mesolimbic dopamine neurons to stress. *Brain Res* 1990; 52:311-315.

Archive of SID