

Histomorphometric evaluation of treatment of rat azoospermic seminiferous tubules by allotransplantation of bone marrow-derived mesenchymal stem cells

Farhad Rahmanifar ¹, Amin Tamadon ², Davood Mehrabani ^{2*}, Shahrokh Zare ², Soroush Abasi ², Saeideh Keshavarz ², Mehdi Dianatpour ^{2,3}, Zahra Khodabandeh ², Iman Razeghian Jahromi ⁴, Omid Koohi-Hoseinabadi ⁵

¹ Department of Basic Sciences, School of Veterinary Medicine, Shiraz University, Shiraz, Iran

² Stem Cell and Transgenic Technology Research Center, Shiraz University of Medical Sciences, Shiraz, Iran

³ Department of Medical Genetics, School of Medicine, Shiraz University of Medical Sciences, Shiraz, Iran

⁴ Cardiovascular Research Center, Shiraz University of Medical Sciences, Shiraz, Iran

⁵ Laboratory Animal Center, Shiraz University of Medical Sciences, Shiraz, Iran

ARTICLE INFO

Article type:

Original article

Article history:

Received: Dec 22, 2015

Accepted: Mar 3, 2016

Keywords:

Azoospermia
Bone marrow mesenchymal-stem cell
Busulfan
Cell therapy
Rat

ABSTRACT

Objective(s): Bone marrow-derived mesenchymal stem cells (BM-MSCs) potentials make them appropriate for cell therapy including ability of differentiation and release of anti-inflammatory cytokines and growth factors secreta. For treatment of azoospermia to induce proliferation and differentiation of germ cells, MSCs transplantation has been introduced. The aim of the present experimental case-control study was to histomorphometric evaluation of the germinal cells in seminiferous tubules of azoospermic rats before and after BM-MSCs allotransplantation.

Materials and Methods: In the present study, BM-MSCs were isolated from six male rats and confirmed. Their testes also served as intact negative controls. The recipient rats (n=6) were received two doses of 10 mg/kg of busulfan with 21 days interval to induce azoospermia. After cessation of spermatogenesis, the rats were allotransplanted with the BM-MSCs into efferent duct of right testes. Thirty-five days later, the right cell-treated testes were compared to left azoospermic ones.

Results: Histomorphometric analyses showed that the seminiferous tubules treated with BM-MSCs had normal morphology in comparison with azoospermic testes, which were without germinal layer. In most BM-MSCs-treated seminiferous tubules, spermatogenesis was observed.

Conclusion: The allotransplanted BM-MSCs could induce spermatogenesis in seminiferous tubules of azoospermic rats.

► Please cite this article as:

Rahmanifar F, Tamadon A, Mehrabani D, Zare Sh, Abasi S, Keshavarz S, Dianatpour M, Khodabandeh Z, Razeghian Jahromi I, Koohi-Hoseinabadi O. Histomorphometric evaluation of treatment of rat azoospermic seminiferous tubules by allotransplantation of bone marrow-derived mesenchymal stem cells. Iran J Basic Med Sci 2016; 19:653-661.

Introduction

About 10-15% of all infertile men and 1% of all men are suffering from obstructive or non-obstructive forms of azoospermia (1). Congenital defects, genetic abnormalities, infectious diseases, endocrine disorders, exposure to gonadotoxins, traumas, varicocele, and medications such as chemotherapy drugs are different causes of non-obstructive azoospermia (2). Azoospermia is treated by hormonal or surgical methods with unsatisfactory outcome (2). On the other hand, by increase of the rate of cancers and negative effects of cancer therapy cytotoxic drugs on spermatogenesis, more efforts were focused to compensate their harmful effects (3). For instance, spermatogonial stem cells in different species can be removed by busulfan, a

chemotherapeutic agent (4, 5), through disturbance in DNA replication, but it has no effects on DNA synthesis. It is clear that cytotoxic chemotherapy temporarily or even permanently induces azoospermia. On the other hand, busulfan-treated rats are well-established and excellent recipient animal model for evaluating stem cell activity in testis cell populations (5). Therefore, they were used as recipients in this study.

Nowadays, for treatment of male infertility such as proliferation and differentiation malfunction of germ cells, cell transplantation has been introduced (6). Between various methods of cell therapy, stem cell transplantation for restoring organ or tissue function and structure has become a new therapeutic strategy (7-9). However, various types of stem cells including embryonic stem cells or induced pluripotent stem

*Corresponding authors: Davood Mehrabani. Stem Cell and Transgenic Technology Research Center, Shiraz University of Medical Sciences, Shiraz, Iran. Tel/Fax: +98-71 32341025; emails: mehrabad@sums.ac.ir

cells are candidates for stem cell therapy, but mesenchymal stem cells (MSCs) are the safest and easily available. MSCs have been isolated from bone marrow (10), adipose tissue (11, 12), endometrium (13, 14), menstrual blood (15) and dental pulp (16) which all have the potential of being a selected source for MSCs therapy of azoospermia. Accumulated evidences suggest that bone marrow harbors bone marrow MSCs (BM-MSCs), hematopoietic stem cells, endothelial stem cells, and multipotential adult progenitor cells (17, 18). In the current decade, BM-MSCs have been shown to have a greater potential for tissue repair, because of their ability to differentiate into various types of tissues in the appropriate *in vivo* conditions (9). The second ability of BM-MSCs is growth factor secretion that stimulate function restoration of the resident spermatogonia (7). The last mechanism is merging of BM-MSCs with endogenous seminiferous tubule cells to recover the function by injured tissue (19).

After successful transplantation of spermatogonial stem cells in different species, more investigations are developed to evaluate approach of stem cell therapy for treatment of azoospermia (20). Some species animal models of azoospermia including mice and rats were treated by injection of MSCs into seminiferous or testicular tissue (21-23), by the way, without paying attention to the mechanisms of treatment and MSCs sources, all these animal models showed that MSCs therapy can be beneficial to reduce the side effects of chemotherapies on spermatogenesis. Regarding to this therapeutic effects, the structural effect of treatment with BM-MSCs on the histomorphology of male germinal layer were not evaluated in rat azoospermia model. Therefore, the aim of this study was to histomorphometric evaluation of the germinal layer of seminiferous tubules before and after BM-MSCs allotransplantation in busulfan-induced azoospermic rats.

Materials and methods

Animals

The present study was performed according to the animal research instructions of the Ethical Committee of Shiraz University to minimize suffering during the experimental period. Twelve male Sprague-Dawley rats weighing 250-300 g were kept in polypropylene cages and housed in the Laboratory Animal Center, Shiraz University of Medical Sciences, Shiraz, Iran in temperature-controlled room (20-22 °C) under 12 hr light/dark cycle (7.00-19.00 lightning). The rats were fed with standard commercial chow diet *ad libitum* and had free access to water. They were divided into two groups of azoospermia and control (n=6). The control groups were applied as cell donors and their left testes were used as negative control group. In the azoospermic group, the left testes of azoospermia-induced rats

were treated with BM-MSC and their right testes were served as positive control group.

Isolation of BM-MSCs

Rats of negative control group were euthanized by cervical dislocation after intraperitoneal injection of 100 mg/kg ketamine (Woerden, Netherlands) and 7 mg/kg xylazine (Alfazyme, Woerden, Netherlands) for anesthetizing. Incision was made on the skin and both femurs and their muscular tissues were completely removed. BM-MSCs were isolated from the femurs of rats. Under sterile conditions, both ends of the bone were cut and the bone marrow was flushed out using an insulin syringe filled with Dulbecco's modified eagle medium (DMEM; Biovet, Bulgaria) supplemented with 1% penicillin streptomycin (Sigma, USA). After bone marrow extraction, cells were cultured and BM-MSCs were isolated by modification of the previous reported method (10). In details, bone marrow was diluted with DMEM, and at 1500 rpm for 5 min was centrifuged. The precipitate was cultured in a 75 cm² flask containing DMEM supplemented with 10% fetal bovine serum (FBS; Biovet, Bulgaria), 1% L-glutamine (Sigma, USA) and 1% penicillin and streptomycin (Sigma, USA) and transferred into CO₂ incubator at 37 °C with 5% CO₂ and saturated humidity. The medium was changed after 24 hr and then every 72 hr, to remove the non-adherent cells. Cells were sub-cultured two times to obtain a sufficient number of cells using standard methods of trypsinization. Adherent cells were subcultured when they were 80% confluent after phosphate buffer saline (PBS, Gibco, USA) washing and 5 min treatment of the cells with 0.25% trypsin (Gibco, USA). To inactivate enzyme activity, the same volume of supplemented DMEM media was added. Cell passage was continued until passage 2.

Freezing and thawing of BM-MSCs

To coordinate between azoospermia model preparation and cell isolation and characterization, it was necessary to cryopreserve the isolated cells for further steps of the research. For this purpose, the confluent flasks of BM-MSCs in passage 2 were treated with 0.25% trypsin (Gibco, USA) for 3-4 min and then the enzyme was inactivated by equal amount of supplemented DMEM media. After centrifuging the cell suspension at 1500 rpm for 5 min, the supernatant was removed and the precipitate was suspended in mixture of 50% DMEM media, 40% FBS, and 10% dimethyl sulfoxide (DMSO; MP Bio) at a density of 2×10⁶ viable cells/ml and was aliquoted into sterile plastic labeled cryovials. They were freezed in -20 °C for 1 hr and then in -70 °C for 24 hr, and finally transferred to liquid nitrogen for long-term storage. Whenever BM-MSCs were needed, they were taken out for thawing and culturing. The freezed cryovials were partially thawed in a 37 °C water bath and equal volume of

DMEM medium was added. Then, cell suspension was centrifuged for 5 min at 1500 rpm. Removing the supernatant, the precipitated BM-MSCs were cultured in a culture flask as mentioned before. Then, using a hemocytometer, the collected cells after 80% confluency were counted.

Detection of mesenchymal marker on BM-MSCs

Reverse transcription polymerase chain reaction (RT-PCR) was applied to detect the presence of BM-MSCs' specific marker (CD73) expression and absence of expression of hematopoietic stem cells' specific marker (CD45). Using the column RNA isolation kit (Denazist-Asia, Iran), total RNA of the BM-MSCs was extracted and by a spectrophotometer its concentration was evaluated. Then, synthesis of cDNA (complementary DNA) from RNA samples was performed using AccuPower Cycle Script RT PreMix Kit (Bioneer, Korea). Briefly, for each reaction 15 μ l of total RNA was used and with the DEPC water, the volume had been reached up to 20 μ l. Twelve thermal cycles were performed with the following way: primer annealing at 20 °C for 30 sec, cDNA synthesis at 42 °C for 4 min, melting secondary structure and cDNA synthesis at 55 °C for 30 sec and heat inactivation at 95 °C for 5 min. In the next step, 1 μ l of cDNA template was mixed with forward and reverse primers (CD73 and CD45), PCR buffer, Taq DNA polymerase, dNTPs, MgCl₂, and H₂O. Then, 20 μ l of the mixing in microfuge tubes were transferred to thermocycler (Eppendorf Mastercycler Gradient, Eppendorf, Hamburg, Germany) to be run in 30 amplification cycles; denaturation at 95 °C for 30 sec, annealing at 64 °C for 30 sec, and extension at 72 °C for 30 sec with primary denaturation at 95 °C for 2 min and final extension at 72 °C for 5 min. By gel electrophoresis of PCR products and in 1.5% agarose gel medium, the presence of considered bands was evaluated with the aid of DNA safe stain. Under UV radiation, produced bands were visualized by Gel documentation system (UVtec, Cambridge, UK).

Osteogenic and adipogenic differentiations of BM-MSCs

The BM-MSCs at 90% confluency were cultivated for 3 weeks in DMEM, 15% FBS, 10 mM glycerolphosphate, 200 μ M L-ascorbic acid, and 100 nM dexamethasone and the osteogenic differentiation medium was changed biweekly. Then, using alizarin red staining, osteogenic differentiation was evaluated. Briefly, BM-MSCs were fixed for 10 min in 4% paraformaldehyde. After that, cells were incubated in 1% alizarin red and 1% ammonium hydroxide for 20 min at room temperature. Cell cultures were washed with 1 ml dH₂O 4 times and 5 min each time replacing the water at each 5 min interval and air-dried. A brilliant red staining was resulted from alizarin red dye binding to calcium ions of mineralized deposits

secreted by osteoblasts in cultures (all reagents from Sigma-Aldrich, USA).

The cells at 90% confluency were cultivated for 3 weeks in DMEM, 15% FBS, 100 μ M L-ascorbic acid, 0.2 mM L-glutamine, 200 μ M indomethacin, and 100 nM dexamethasone and the adipogenic differentiation medium was changed biweekly. Then, using Oil Red O staining, adipogenic differentiation was evaluated based on the generation of oil droplets. Briefly, the BM-MSCs were fixed for 10 min with 10% formalin at room temperature and washed twice with water. Then, Oil Red O stain (6 ml of 0.5% Oil Red O in 4 ml distilled water) was added and incubated for 1 hr at room temperature and the cells were rinsed several times with water (all reagents from Sigma-Aldrich, USA).

Busulfan treatment of rats and BM-MSCs transplantation

Six male rats were induced azoospermia by 10 mg/kg intraperitoneally injection of two doses of busulfan (Busilvex®, Pierre Fabre Medicament, Boulogne, France) with 21 days interval. BM-MSCs allotransplantation was performed 35 days after the last busulfan injection. Suspension of BM-MSCs was mixed with equal volume of sterile trypan blue and was loaded into a 1 ml syringe was attached into the polyethylene tube which was connected to a pulled pipette (Figures 1A and B).

After anaesthetizing of the rats by ketamine and xylazine, their abdominal area was surgically prepared in dorsal recumbency and a 2-cm midline abdominal incision was made to expose the peritoneal cavity (Figure 1C). Using an iris forceps, the fat pad attached to the right testis and epididymis was gently pulled to exteriorize the testis under a stereomicroscope (Model SZN, Optika, Italy; Figure 1D). A thin sterile black plastic card with a v-like cut as a testis holder was put underneath the testis (Figure 1E). Cutting the inferior ligament of the epididymis (Figure 1F), the efferent duct that connects the epididymis to the testis was gently dissected out from surrounding fat tissue using a sharp needle (Figure 1G). By insertion of a triangular black plastic card underneath the duct, a good contrast between the fat tissue and membrane around translucent efferent duct was formed (Figure 1H). The pipette was carefully inserted into the efferent duct and a few mm gently threaded toward the testis and was avoided moving the injection pipette (Figure 1I). Then, the blue suspension of BM-MSCs (10⁶ cells in 100 μ L) flowed into the rete testis by gently depressing the syringe plunger to fill almost all seminiferous tubules (Figure 1J). The abdominal wall and the skin were sutured after returning of the testis into abdominal cavity. The untreated left testis with BM-MSCs was served as positive control azoospermia.

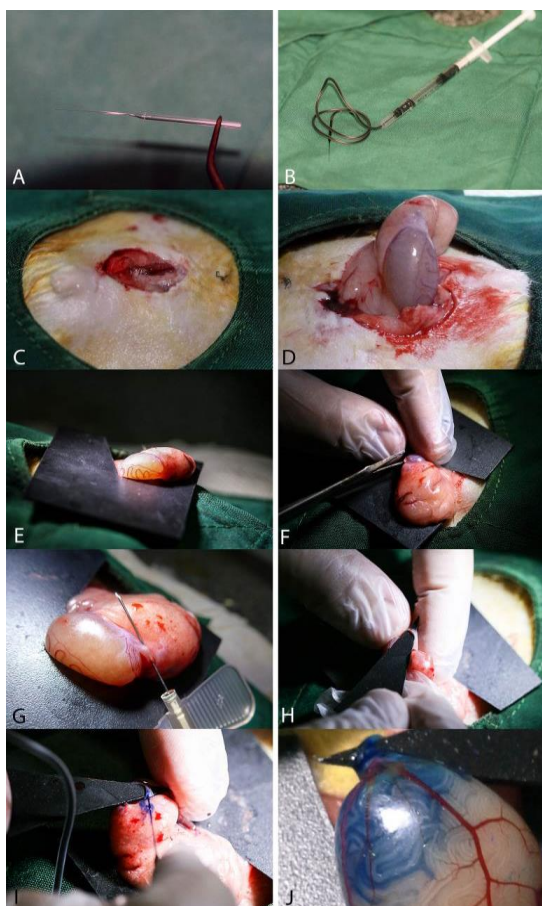


Figure 1. Details of the allotransplantation procedure of bone marrow-derived mesenchymal stem cells (BM-MSCs) in seminiferous tubules of azoospermic rat. A, A pulled glass pipette on the flame with fine tips which diameter is less than efferent duct of rat testis. B, Designed micro-injector consistent of a 1 ml syringe, tube of a 24 gage butterfly needle, and the pre-pulled glass pipette which charged with 10^6 BM-MSCs were mixed with trypan blue. C, A 2-cm abdominal midline incision is performed. D, The right testis is pulled out by grasping the testicle fat pad. E, A hard black plastic square with v-shape triangular cuts is used for complete fixation of testis. F, Cutting the inferior ligament of the epididymis to facilitate achieving the efferent duct of rat testis. G, Dissecting the efferent duct by a butterfly needle from the covered adipose tissue. H, To make a good contrast between the translucent efferent duct and the fat tissue and the membrane around it, a hard black plastic triangle was inserted underneath the efferent duct. I, Injection of BM-MSCs suspension into efferent duct of rat testis. J, Seminiferous tubules were partially filled with mixture of BM-MSCs suspension

Histomorphometric analysis of testes

Thirty-five days after BM-MSCs injection, animals were euthanized with ether and their testes were removed and fixed in a 10% formalin buffer solution. After fixation, ethanol and xylene were used for dehydration step and testes were implanted in paraffin. Testes were embedded in paraffin wax were sectioned at thicknesses of 5 μ m. For each testis five vertical sections from the polar and the equatorial regions were sampled. Then hematoxylin-eosin

staining was performed on sections and they were examined for any spermatogenic activity by light microscope. For this purpose, all tubules were evaluated in one section per animal for presence of spermatogonia, spermatocytes and spermatids.

Then for evaluation of histomorphometric indices, in 10 circular transverse sections of tubules each from a different region of the testis, outer, inner, and total diameters were measured according to Panahi *et al* (5). The mean seminiferous tubule diameter (D) was derived by taking the average of two diameters, D1 and D2 at right angles. The cellular and luminal areas and cross sectional area of the tubules were also determined. Cross-sectional area and luminal area (A) of the seminiferous tubules were calculated using the equation $A = \pi D^2 / 4$, where π is equivalent to 3.14 and D is the mean total diameter or luminal diameter of seminiferous tubules, respectively. The cellular area was determined by subtraction of luminal area from cross-sectional area.

The testes were also rated for its spermatogenic potential according to the modified spermatogenic index on a modified scale of 0 to 7 (5). The index was based on the presence of the spermatogenic cells throughout the tubules and included number of types of cells, cell layers, and the appearance of late spermatids in the tubules. The index criteria were as follows: 0, no germinal layer cells; 1, presence of only spermatogonia; 2, appearance of spermatogonia and spermatocytes; 3, appearance of spermatogonia, spermatocytes and early round spermatids and up to <25 late spermatids per tubule; 4, appearance of spermatogonia, spermatocytes, and spermatids with 25-50 late spermatids per tubule; 5, appearance of spermatogonia, spermatocytes, and spermatids with 50-75 late spermatids per tubule; 6, appearance of spermatogonia, spermatocytes, and spermatids and up to 75-100 late spermatids per tubule; and 7, all cell types present and >100 late spermatids per tubule.

Statistical analysis

Normality of all data of histomorphometric indices of seminiferous tubules were tested by Kolmogorov-Smirnov test. Means and standard error (SE) of the data were analyzed by one-way ANOVA (SPSS for Windows, version 11.5, SPSS Inc, Chicago, Illinois) and Tukey *post hoc* test. Mann-Whitney U test was applied to compare the spermatogenesis index of seminiferous tubules between groups. The *P*-value ≤ 0.05 was considered to be statistically significant. Group means and their SEM were reported in the graphs which are designed by GraphPad Prism (version 5.01 for Windows, GraphPad software Inc., San Diego, CA, USA).

Table 1. Sequences of RT-PCR primers used to quantify the expression of bone marrow-derived mesenchymal stem cells' specific marker (CD73) and hematopoietic stem cells' specific marker (CD45) in rat

Primer	Primer sequence	Amplicon length (bp)
CD73-F	TGCATCGATATGGCCAGTCC	208
CD73-R	AATCCATCCCACCGTTGAC	
CD45-F	CCAAGAGTGGCTCAGAAGGG	450
CD45-R	CTGGGCTCATGGGACCATT	

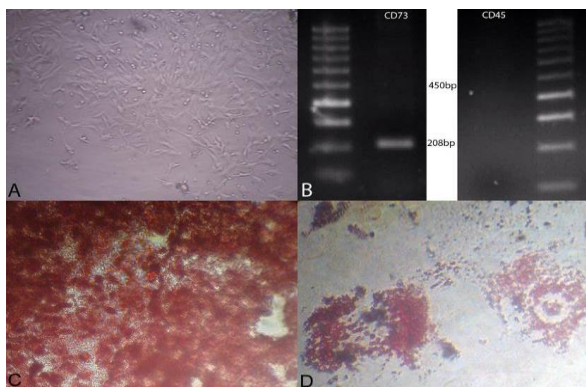


Figure 2. A, Morphological and phenotypic characteristics of rat bone marrow-derived mesenchymal stem cells (BM-MSCs). Stem cells exhibited large, flattened and fibroblast-like morphology ($\times 40$). B, Agarose gel electrophoresis of products of reverse transcriptase polymerase chain reaction (RT-PCR) revealing the presence of specific mesenchymal marker (CD73) compared with absence of specific hematopoietic marker (CD45) of rat BM-MSCs. C, BM-MSCs cultivated in osteogenic medium and stained with alizarin red ($\times 100$) and D, in adipogenic medium and were stained with Oil Red O at day 21 after induction ($\times 100$)

Results

Confirmation of BM-MSCs' characters

After BM-MSCs attached to the culture flasks, they showed a fibroblast-like, spindle-shaped morphology.

BM-MSCs started to proliferate 3-4 days after incubation until reaching an 80% confluence (Figure 2A). MSC marker of rats' BM-MSCs analyzed using a RT-PCR assay. Figure 2B displays presence of MSC marker (CD73) and absence of cell surface marker of hematopoietic stem cell (CD45). To further confirmation of MSC's characters of isolated cells, the osteogenic and adipogenic differentiation capacity of BM-MSCs of rats were performed. The BM-MSCs were differentiated toward osteoblasts after culture in osteogenic differentiation medium and were verified by positive staining with alizarin red staining (Figure 2C). The presence of intracellular lipid droplets in BM-MSCs were treated by the adipogenic differentiation medium, were confirmed by Oil Red O staining (Figure 2D).

Histological assessment of spermatogenesis

Normal intact rats had more condensed germinal epithelium (Figure 3A) and all of seminiferous tubules were filled by spermatozoa (Figure 3B). After the treatment with busulfan, the seminiferous tubules of the testes were not treated with BM-MSCs were empty and their spermatogenesis process was disrupted (Figure 3C). Sections in positive control group showed only presence of Sertoli cells in the seminiferous tubules. Histological examinations of

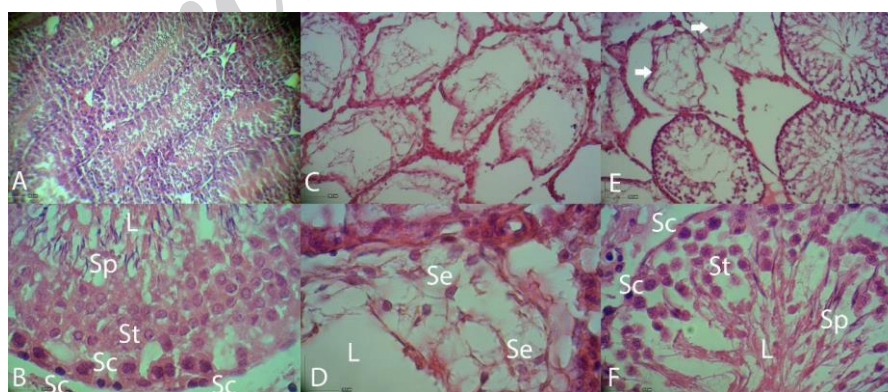


Figure 3. Histopathologic evaluation of busulfan treated rats before and after treatment with bone marrow-derived mesenchymal stem cells (BM-MSCs). A and B, Sections of seminiferous tubules of normal control rat. Tubules have condensed spermatogenic epithelium. C and D, Busulfan treated azoospermic control seminiferous tubules. The seminiferous tubules were partially empty and vacuolated spaces without germinal layer cells indicating the absence of spermatogenesis. E, Sections of seminiferous tubules of treated rat with BM-MSCs. Most of tubules appeared to have spermatogenic cells. Arrows show the untreated seminiferous tubules. F, Presence of different kind of germinal epithelial cells in stem cell-treated seminiferous tubules. Larger spaces between germinal layer cells can be compared with normal tubules. Abbreviations: L, lumen; Se, Sertoli cell; Sc, spermatogonia; S1, spermatocytes; St, spermatid and Sp, spermatozoa. Hematoxylin and eosin staining

testes in busulfan treatment group revealed some degenerative changes such as seminiferous tubular atrophy and degeneration of germinal epithelium in most of the seminiferous tubules. The large vacuolated lumen occupied seminiferous tubules and the atrophic germinal epithelium covered peripheral zone of seminiferous tubules as thin bands (Figure 3D). In the seminiferous tubules with BM-MSCs transplantation, most of the tubules appeared to be filled up with germinal cells (spermatogonia, primary spermatocytes, spermatids and sperms) (Figure 3F). There were some tubes with lack or weak germinal layer regeneration in cell therapy group.

Histomorphometric findings

Histomorphometric evaluations showed the lumen diameter and area of the tubules in rats with BM-MSCs transplantation were less than the azoospermic rats and more than normal ones ($P < 0.05$; Figures 4A and B). The cellular diameter and cellular area of germinal epithelium in the seminiferous tubules in rats with BM-MSCs transplantation were more than azoospermic group ($P < 0.05$; Figures 4B and 4C). However, cellular area in rats with BM-MSCs transplantation was more than normal control rats ($P < 0.05$), but cellular diameters of these two groups were not statistically different ($P > 0.05$). The total diameter and cross sectional area of seminiferous

tubules in rats with stem cell transplantation were more than azoospermic rats and also in both groups were more than the normal control group ($P < 0.05$; Figures 4D and 4E). In rats with stem cell transplantation, spermatogenesis index of seminiferous tubules was more than azoospermic rats, and in both groups were less than the normal control rats ($P < 0.05$; Figures 5).

Discussion

In azoospermic treatment, damaged somatic environment of the testis is one of limiting step and the most problem for testicular function recovery. Azoospermic patients with damaged testis can not be treated with spermatogonial stem cell transplantation (24). In the present study, the damaged azoospermic seminiferous tubules with busulfan in the rat were allotransplanted by BM-MSCs, which induced spermatogenesis. To obtain advanced differentiated spermatozoa, combination of *in vitro* differentiation and transplantation was performed (25). Several *in vivo* studies have been performed to evaluate the differentiation potential of MSCs into spermatozoa in rats and mice animal models. Furthermore, intra-seminiferous tubule injection (9, 26) and intra-testicular injection of BM-MSCs (27) were also found to induce spermatogenesis in seminiferous tubules of azoospermic rats. In addition, Mehrabani *et al* (28) and

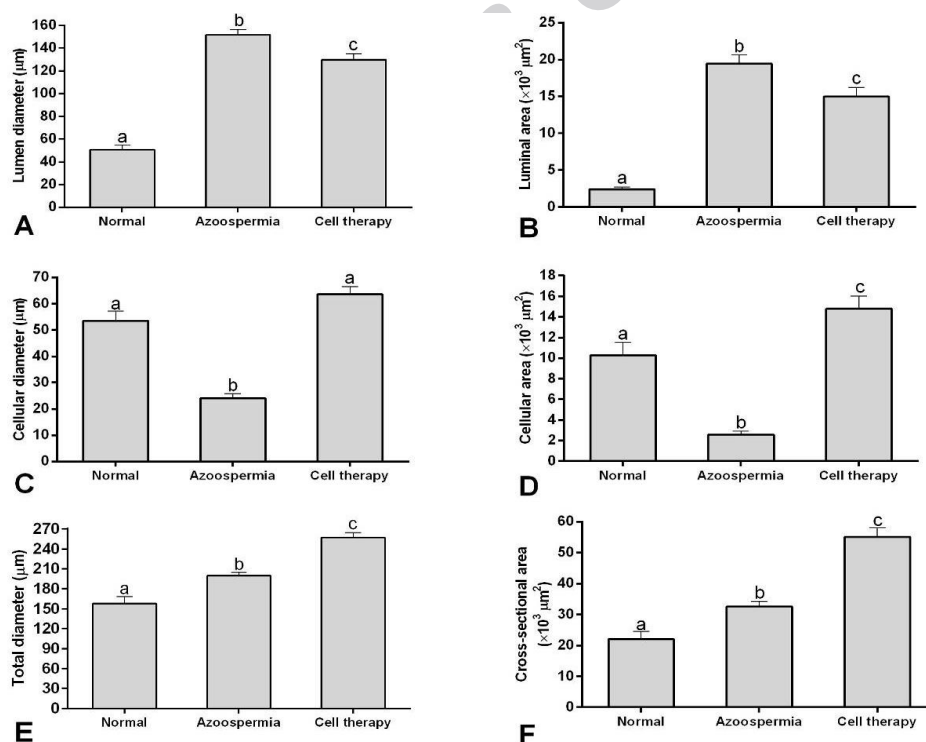


Figure 4. Mean and SEM of histomorphometric indices of seminiferous tubules in busulfan-induced azoospermic testis treated with bone marrow-derived mesenchymal stem cells (cell therapy) in comparison with busulfan treated testes (azoospermia) and intact testis (normal) in rat. A, Lumen diameter (µm), B, Luminal area (µm²), C, Cellular diameter (µm), D, Cellular area (µm²), E, Total diameters (µm), F, Cross sectional area of the tubules (µm²). a, b, c different superscript letters show significant differences between groups ($P < 0.05$)

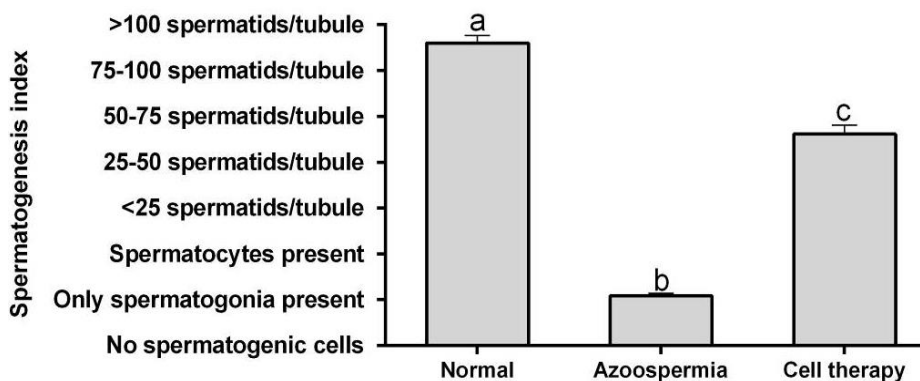


Figure 5. Mean and SEM of spermatogenesis index of seminiferous tubules in busulfan-induced azoospermic testis treated with bone marrow-derived mesenchymal stem cells (cell therapy) in comparison with busulfan treated testes (azoospermia) and intact testis (normal) in rat. ^{a, b, c} different superscript letters show significant differences between groups ($P < 0.05$)

Cakici *et al* (21) demonstrated that adipose tissue-derived MSCs (AT-MSCs) could lead to recovery of fertility in the busulfan-treated azoospermia rat model. Recently, Chen *et al* (29) showed that sperm differentiation potential of transplantation of human umbilical cord MSCs into seminiferous tubule of immunodeficient mice. In the other rodent species, hamster, intra-seminiferous tubule injection of BM-MSCs activated spermatogenesis in busulfan-induced azoospermic model (30). It seems BM-MSCs were found effective in treating animal model of azoospermia.

Furthermore, although donor and recipient animals were not syngeneic and despite of immunocompetitive character of donor rats, allotransplantation of BM-MSCs in seminiferous tubules of azoospermic rats had therapeutic effects. Consistent with our findings, allogeneic BM-MSCs trans-differentiated into spermatogenic-like-cells and enhanced endogenous fertility recovery in rat by injection into seminiferous tubules of recipient with busulfan induced (9, 26, 27) and testicular torsion (31) azoospermia rats. It is shown that BM-MSCs are not only hypo-immunogenic but also produce immunosurveillance or immunosuppression upon transplantation, therefore they are suitable for allogeneic transplantation (32). In mice after testis rupture, intravenous allogeneic transfusion of BM-MSCs showed immunomodulatory effects on antisperm antibody production (33). Moreover, immunological tolerance of Sertoli cells (34) can cause survival and protection of the allotransplanted BM-MSCs from post-transplantation inflammatory or immune reaction. Except the mentioned items, commenting on this topic, three other points can be noticed in allotransplantation of BM-MSCs in seminiferous tubules. The first one is the immune privilege character of seminiferous tubules. Certain sites of some tissues in immunocompetent wild type mammals are immune privilege including the eye, the brain, the pregnant uterus and the testicles (35).

The second point is the pharmacologic character of busulfan. Busulfan is a chemotherapeutic agent that is mostly used in low doses and for a long time in treatment of chronic myeloid leukemia (36) and before any allotransplantation of hematopoietic cells (37). Therefore, allotransplantation of MSCs can be considered as a method of choice for azoospermia cell therapy.

On the other hand, morphometric findings of the present study showed a new feature of azoospermia cell therapy. Total diameter and cross sectional area of the tubules in rats of the normal control group was less than before and after transplantation. Moreover, the lumen diameter and area of the tubules in rats with BM-MSCs transplantation were more than the normal rats and less than the azoospermic rats. These morphometric changes can be explained that some tubes collapsed after induction of azoospermia by the intratubular hydrostatic pressure and even after cell therapy, the tubular structures of seminiferous tubules which were treated in BM-MSCs-treated rats and untreated ones in azoospermia groups had more space to grow. The intratubular hydrostatic pressure of rats seminiferous tubules are 3.0 ± 0.2 mmHg (38). The contraction ability of myofibroblast cells in peritubular layer may be reduced by increase of total diameter which may cause observed decrease of spermatozoa in epididymis of BM-MSCs treated rats. This phenomenon needs to be investigated in future. In addition, cellular area of the tubules in rats with BM-MSCs transplantation was more than azoospermic and normal control groups. These were caused by increasing total diameter of seminiferous tubules in treated animals and increase of Sertoli cells interval spaces caused more places for cell proliferation. Interestingly, however, cellular diameter of azoospermic rats was less than normal control group, but cellular area of those two groups were not different. In addition, increase of cross sectional area of tubules in azoospermic rats and moreover, greater

space for Sertoli cells which were not affected by busulfan leads the germinal layer cells to cover a more two-dimensional area than normal rats.

Furthermore, in the present study, in rats with BM-MSCs transplantation, spermatogenesis index of seminiferous tubules was statistically less than normal control rats. Seminiferous tubules provide cyclic and dynamic regulation of spermatogenesis, and Sertoli cells prepare a microenvironment that induces spermatogonial proliferation and differentiation (39). Our findings also demonstrated that BM-MSCs may ameliorate reconstitution of the tubular microenvironment which helps remained inactivated spermatogonia to proliferate in the host seminiferous tubules but during the recovery period function of the germinal layer could not reach to normal condition.

Conclusion

In the present study, BM-MSCs interactions in the rat testis were evaluated functionally by allotransplantation of these cells into seminiferous tubules of azoospermic rats. Injected BM-MSCs induced new formation of testicular germinal cells and this confirms that BM-MSCs therapy could help the partial repair of pathological changes in seminiferous tubules of azoospermic rats. This finding raises the possibility of using BM-MSCs to treat azoospermia in human.

Acknowledgment

The authors would like to appreciate the kind of Stem Cell and Transgenic Technology Research Center, Shiraz University of Medical Sciences, Shiraz, Iran for laboratory cooperation. This study was financially supported by Vice Chancellor of Research, School of Veterinary Medicine, Shiraz University, Shiraz, Iran as a DVM thesis with grant# thesis1443, February 2015.

Conflict of Interest

There is no conflict of interest.

References

- Gudeloglu A, Parekattil SJ. Update in the evaluation of the azoospermic male. *Clinics* 2013; 68:27-34.
- Berookhim BM, Schlegel PN. Azoospermia due to spermatogenic failure. *Urol Clin North Am* 2014; 41:97-113.
- Dohle GR. Male infertility in cancer patients: review of the literature. *Int J Urol* 2010; 17:327-331.
- Panahi M, Karimaghani N, Rahmanifar F, Tamadon A, Vahdati A, Mehrabani D, et al. Stereological evaluation of testes in busulfan-induced infertility of hamster. *Comp Clin Pathol* 2014; 24:1051-1056.
- Panahi M, Keshavarz S, Rahmanifar F, Tamadon A, Mehrabani D, Karimaghani N, et al. Busulfan induced azoospermia: Stereological evaluation of testes in rat. *Vet Res Forum* 2015; 6:273-278.
- O'Brien KLF, Varghese AC, Agarwal A. The genetic causes of male factor infertility: a review. *Fertil Steril* 2010; 93:1-12.
- Leatherman J. Stem cells supporting other stem cells. *Front Genet* 2013; 4:257-262.
- Pfister O, della Verde G, Liao R, Kuster GM. Regenerative therapy for cardiovascular disease. *Transl Res* 2014; 163:307-320.
- Zhang D, Liu X, Peng J, He D, Lin T, Zhu J, et al. Potential spermatogenesis recovery with bone marrow mesenchymal stem cells in an azoospermic rat model. *Int J Mol Sci* 2014; 15:13151-13165.
- Asadi-Yousefabad S-L, Khodakaram-Tafti A, Dianatpour M, Mehrabani D, Zare S, Tamadon A, et al. Genetic evaluation of bone marrow-derived mesenchymal stem cells by a modified karyotyping method. *Comp Clin Pathol* 2015; 24:1361-1366.
- Shaterzadeh-Yazdi H, Mehrabani D, Khodakaram-Tafti A, Dianatpour M, Zare SH, Tamadon A, et al. Osteogenic potential of subcutaneous adipose-derived stem cells in a rabbit model. *Online J Vet Res* 2015; 19:436-445.
- Lin F. Adipose tissue-derived mesenchymal stem cells: a fat chance of curing kidney disease? *Kidney Int* 2012; 82:731-733.
- Mehrabani D, Rahmanifar F, Mellinejad M, Tamadon A, Dianatpour M, Zare S, et al. Isolation, culture, characterization, and adipogenic differentiation of heifer endometrial mesenchymal stem cells. *Comp Clin Pathol* 2014; 24:1159-1164.
- Tamadon A, Mehrabani D, Zarezadeh Y, Rahmanifar F, Dianatpour M, Zare S. Caprine endometrial mesenchymal stromal stem cell: multi-lineage potential, characterization and growth kinetics in breeding and anestrus stages. *Vet Med Int* 2016; In press.
- Mehrabani D, Bahrami Nazarabadi R, Dianatpour M, Vahdati A, Tamadon A, Kasraeian M, et al. Growth kinetics, characterization and plasticity of human menstrual blood stem cells. *Iran J Med Sci* 2016; 41:132-139.
- Mahdiyari P, Zare S, Robati R, Dianatpour M, Torabi K, Tamadon A, et al. Isolation, culture, and characterization of human dental pulp mesenchymal stem cells. *Int J Pediatr* 2014; 2:44.
- Ehninger A, Trumpp A. The bone marrow stem cell niche grows up: mesenchymal stem cells and macrophages move in. *J Exp Med* 2011; 208:421-428.
- Morrison SJ, Scadden DT. The bone marrow niche for haematopoietic stem cells. *Nature* 2014; 505:327-334.
- Mansour A, Abou-Ezzi G, Sitnicka E, Jacobsen SE, Wakkach A, Blin-Wakkach C. Osteoclasts promote the formation of hematopoietic stem cell niches in the bone marrow. *J Exp Med* 2012; 209:537-549.
- Goossens E, Van Saen D, Tournaye H. Spermatogonial stem cell preservation and transplantation: from research to clinic. *Hum Reprod* 2013; 28:897-907.
- Cakici C, Buyrukcu B, Duruksu G, Haliloglu AH, Aksoy A, Isik A, et al. Recovery of fertility in azoospermia rats after injection of adipose-tissue-derived mesenchymal stem cells: the sperm generation. *Bio Med Res Int* 2013; 2013:529589.
- Monsefi M, Fereydouni B, Rohani L, Talaei T. Mesenchymal stem cells repair germinal cells of seminiferous tubules of sterile rats. *Iran J Reprod Med* 2013; 11:537-544.

23. Moreno I, Míguez-Forjan JM, Simón C. Artificial gametes from stem cells. *Clin Exp Reprod Med* 2015; 42:33-44.
24. Easley IV CA, Simerly CR, Schatten G. Stem cell therapeutic possibilities: future therapeutic options for male-factor and female-factor infertility? *Reprod Biomed Online* 2013; 27:75-80.
25. Zhu Y, Hu H-L, Li P, Yang S, Zhang W, Ding H, et al. Generation of male germ cells from induced pluripotent stem cells (iPS cells): an *in vitro* and *in vivo* study. *Asian J Androl* 2012; 14:574-579.
26. Zahkook SA, Atwa A, Shahat M, Mansour AM, Bakry S. Mesenchymal stem cells restore fertility in induced azoospermic rats following chemotherapy administration. *J Reprod Infertil* 2014; 5:50-57.
27. Monsefi M, Fereydouni B, Rohani L, Talaei T. Mesenchymal stem cells repair germinal cells of seminiferous tubules of sterile rats. *Iran J Reprod Med* 2013; 11:537.
28. Mehrabani D, Hassanshahi MA, Tamadon A, Zare S, Keshavarz S, Rahmanifar F, et al. Adipose tissue-derived mesenchymal stem cells repair germinal cells of seminiferous tubules of busulfan-induced azoospermic rats. *J Hum Reprod Sci* 2015; 8:103-110.
29. Chen H, Tang QL, Wu XY, Xie LC, Lin LM, Ho GY, et al. Differentiation of human umbilical cord mesenchymal stem cells into germ-like cells in mouse seminiferous tubules. *Mol Med Rep* 2015; 12:819-828.
30. Tamadon A, Mehrabani D, Rahmanifar F, Raayati Jahromi A, Panahi M, Zare S, et al. Induction of spermatogenesis by bone marrow-derived mesenchymal stem cells in busulfan-induced azoospermia in hamster. *Int J Stem Cells* 2015; 8:134-145.
31. Sabbaghi MA, Bahrami AR, Feizzade B, Kalantar SM, Matin MM, Kalantari M, et al. Trial evaluation of bone marrow derived mesenchymal stem cells (MSCs) transplantation in revival of spermatogenesis in testicular torsion. *Middle East Fertil Soc J* 2012; 17:243-249.
32. Bibber B, Sinha G, Lobba ARM, Greco SJ, Rameshwar P. A review of stem cell translation and potential confounds by cancer stem cells. *Stem Cells Int* 2013; 2013:241048 pages.
33. Aghamir SMK, Salavati A, Yousefie R, Tootian Z, Ghazaleh N, Jamali M, et al. Does bone marrow-derived mesenchymal stem cell transfusion prevent antisperm antibody production after traumatic testis rupture? *Urology* 2014; 84:82-86.
34. Mital P, Kaur G, Dufour JM. Immunoprotective sertoli cells: making allogeneic and xenogeneic transplantation feasible. *Reproduction* 2010; 139:495-504.
35. Meinhardt A, Hedger MP. Immunological, paracrine and endocrine aspects of testicular immune privilege. *Mol Cell Endocrinol* 2011; 335:60-68.
36. Suttorp M, Millot F. Treatment of pediatric chronic myeloid leukemia in the year 2010: use of tyrosine kinase inhibitors and stem-cell transplantation. *Hematology Am Soc Hematol Educ Program* 2010; 2010:368-376.
37. Bartelink IH, van Reij EM, Gerhardt CE, van Maarseveen EM, de Wildt A, Versluys B, et al. Fludarabine and exposure-targeted busulfan compares favorably with busulfan/cyclophosphamide-based regimens in pediatric hematopoietic cell transplantation: Maintaining efficacy with less toxicity. *Biol Blood Marrow Transplant* 2014; 20:345-353.
38. Pholpramool C, Triphrom N, Din-Udom A. Intraluminal pressures in the seminiferous tubules and in different regions of the epididymis in the rat. *J Reprod Fertil* 1984; 71:173-179.
39. Garcia T, Hofmann M. Regulation of germ line stem cell homeostasis. *Anim Reprod* 2015; 12:35-45.