

Using multiplex-PCR assay in identification of *Escherichia coli* O157:H7 isolated from hamburger samples in Mashhad, Iran

Jamshidi, A. ^{1*}, Bassami, M. R. ², Khanzadi, S. ³, Soltaninejad, V. ⁴

1. Department of food hygiene, Faculty of Veterinary Medicine, Ferdowsi University of Mashhad.
2. Department of clinical sciences, Faculty of Veterinary Medicine, Ferdowsi University of Mashhad.
3. Department of food hygiene, Faculty of Veterinary Medicine, Ferdowsi University of Mashhad.
4. Graduated from Faculty of Veterinary Medicine, Ferdowsi University of Mashhad.

(Received:88/4/5 Accepted: 88/6/7)

Abstract

In this study a number of 100 hamburger samples which were produced industrially from different batches were collected randomly from supermarkets in Mashhad city, during the autumn months of 2006. For isolation of the bacteria, samples were, firstly enriched in modified trypticase soy broth containing novobiocin, followed by plating on sorbitol Mac Cankey agar supplemented with cefixime and potassium tellurite. Consequently the suspected non sorbitol fermenting (NSF) colonies were confirmed by biochemical tests as *Escherichia coli* and then employed for multiplex-PCR assay, using primers specific for O157 and H7 antigens gene. The m-PCR assay employed in this study may be a possible alternative to immunological assays which detects somatic and flagellar antigens. In this study, 9 NSF *Escherichia coli* colonies were isolated, and in multiplex-PCR assay two samples (4%) were confirmed as *Escherichia coli* O157:H7.

Key words: *Escherichia coli* O157:H7, Hamburger, M-PCR.

* Corresponding Author E-Mail address: ajamshid@ferdowsi.um.ac.ir

1- Introduction

Escherichia coli O157:H7 serotypes are identified as enterohemorrhagic *E. coli* and categorized in verotoxin producing *E. coli* [1]. Due to the severity of infection which it causes and an infectious dose which may be as low as 10 organisms [2], it has emerged as an important foodborne pathogen of considerable public health concern. It causes haemorrhagic colitis, hemolytic-uremic syndrom (HUS) and thrombotic thrombocytopenic purpura (TTP) [3-4]

Cattle especially the young ones have been implicated as a principal reservoir of *E. coli* O157:H7 [5,6,7]. Cattle frequently excrete this bacteria in their feces [8-9]. Feces and hides are significant sources of bacterial carcass contamination [10,11,12] meat and environment become contaminated from intestinal content of cattle at the time of slaughter, and processing may introduce the organism when performed in non hygienic conditions [13]. Undercooked ground beef is the major vehicle of food-borne outbreaks [14,3].

Different culture methods for the screening of food specimens for *E. coli* O157:H7 are available. Among them Mac Conkey agar containing sorbitol instead of lactose (SMAC), is most commonly used for isolation of *E. coli* O157:H7 [15]. Due to the fact that this bacteria are unable to ferment sorbitol, sorbitol-non fermenting colonies are potentially considered as *E. coli* O157:H7 [15, 16]. Sorbitol-Mac Conkey supplemented with cefixime and tellurite (CT-SMAC) increases the sensitivity of this media. In comparison, broth enrichment methods are superior to direct plating [17]. Furthermore, other than the culture methods which are based on biochemical characteristics of the bacteria, many other assays have been developed, including serological techniques, which uses both polyclonal and monoclonal antibodies specific for the O and H antigens [18, 19]. Molecular approaches have also been practiced. In this regards, PCR assays based on the presence or absence of specific virulence genes such as the *stx*, *eaeA* and *hlyA* and serogroup-specific genes encoding O-antigen in *E. coli* serogroups have been described [18, 20]. Sequence data for the *ficH7* gene which encodes the H7 antigen is also available [21].

The aim of the present study was, isolation of *E. coli* O157:H7 from hamburger

samples collected from supermarkets in Mashhad city, by conventional culture method and confirmation by a serogroup-specific multiplex-PCR assay.

2- Materials and methods

2-1- Sample collection

During the autumn months of 2006, number of 100 hamburger bag samples from different batches (each bag contained 5 pieces of beef hamburger containing more than 60% meat), from five main suppliers which were produced industrially, were randomly collected aseptically in sterile disposable bags from supermarkets, across Mashhad city, Khorasan province, Iran.

2-2- Culture conditions

The samples were brought to the laboratory on crushed ice. Immediately in the laboratory, 25g of each hamburger bag sample was aseptically transferred to 225ml of modified trypticase soy broth (mTSB) containing 20 mg L⁻¹ novobiocin, followed by incubation at 37°C for 24 hours. The enriched culture were plated onto sorbitol Mac Conkey agar supplemented with cefixime (0.05 mg L⁻¹) and potassium tellurite (2.5 mg L⁻¹) (CT-SMAC). The inoculated CT-SMAC plates were incubated at 37°C for 24 hours. Then non-sorbitol fermenting (NSF) colonies were selected from CT-SMAC plates and streaked onto plates containing eosin methylene blue agar (EMB) and were incubated at 37°C for 24 hours. These isolates, with typical *E. coli* metallic sheen on EMB, were characterized by biochemical tests, including conventional indol, methyl red, voges proskauer, citrate and lysine decarboxylase tests.

2-3- Multiplex-PCR assay

Non-sorbitol fermenting (NSF) colonies on CT-SMAC that had been confirmed as *E. coli* were employed as templates for PCR assay. *E. coli* O157:H7 (ATCC-35150) were used as a positive control and sterilized distilled water as negative control. A part of a NSF bacterial colony from CT-SMAC, was suspended in 100µl of sterile DW. The cells were lysed by boiling for 10 minutes in a boiling water bath. The lysate were spined for five minutes at 6000 rpm to pellet the cellular debris. A volume of 2 µl of the supernatant was used as

Table 1 Primers and thermocycling condition for *Escherichia coli* O157: H7

Target gene	Primer sequence (name)	Predicted product size(bp)	Thermalcycling program
<i>rfb</i> O157	F: 5'- CGG ACA TCC ATG TGA TAT GG -3'	259	94°C for 5min (94°C for 60s- 52°C for 30s- 72°C for 60s)*35 cycles-72 °C for 10 min
	R: 5'- TTG CCT ATG TAC AGC TAA TCC -3'		
<i>flic</i> H7	F: 5'- GCG CTG TCG AGT TCT ATC GAG-3'	625	
	R: 5'- CAA CGG TGA CTT TAT CGC CAT TCC-3'		

template for amplification by m-PCR . The presence or the absence of *flic* H7 gene encoding the flagellar antigen H7 and *rfb* O157 gene which encodes the somatic antigen O157 [20, 22] was examined. Table 1 describes oligonucleotide sequence of primers used in the m-PCR reaction mixture. The m-PCR reaction was performed in a 25 μ l amplification mixture consisting of 2.5 μ l 10x PCR buffer (500mM KCl, 200mM Tris HCl) , 0.5 μ l dNTPs (10mM), 1 μ l Mg Cl₂ (50mM) , 1.25 μ l of each primer (0.5 μ M) , 0.2 μ l of Taq DNA polymerase (5 unit/ μ l) and 2 microliter of template. The thermocycler (Bio Rad) program was started with initial incubation at 94° C for 5 min, followed by 35 cycles of denaturation at 94°C for 60 sec, annealing at 52° C for 30 sec and elongation at 72°C for 60 sec, and final extension at 72°C for 10 min. The PCR products were separated by electrophoresis in 1.5% agarose gel at 100V for 40 min in tris-acetate buffer, visualized by ethidium bromide staining, illuminated by UV-transilluminator and documented by a gel documentation apparatus. 100 bp DNA ladder was used as a size reference. The expected size of m-PCR products for *rfb* O157 and *flic* H7 genes amplification were 259 and 625 bp, respectively.

3-4- Results

From 100 hamburger samples which were collected randomly from different supermarkets in Mashhad, after enrichment and selective plating number

of 9 non-sorbitol fermenting (NSF) colonies were isolated and confirmed as *E.coli* by biochemical tests. In m-PCR assay, using specific primers for *rfb* O157 and *flic*H7 genes, only two samples were confirmed to be contaminated with *E.coli* O157: H7 (Figure: 1).

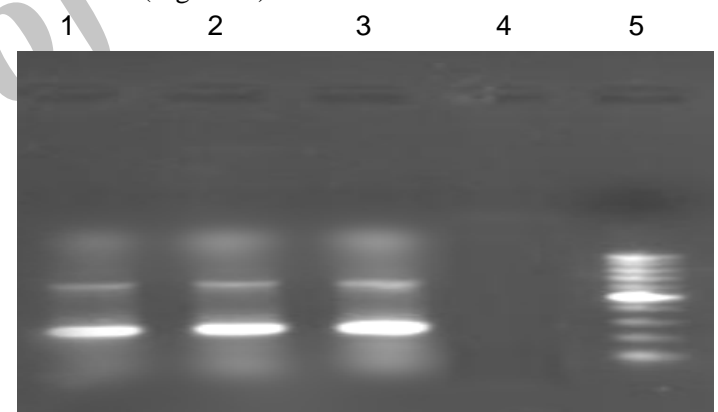


Fig 1 Results of the m-PCR assay, amplifying 259 base pair segment of *rfb* O157 and 625 base pair of *flic* H7 genes of *Escherichia coli* 157: H7

3: Positive control 4: Negative control
1 and 2: Sample 5: 100 bp Marker

4-5- Discussion

In this study *E.coli* O157: H7 isolated from 2% of hamburger samples by conventional culture method and confirmed by multiplex-PCR assay. Our findings do not differ greatly from those reported abroad from minced beef products and retail meat i.e. 3.8% in Argentina [23]; 2.3% in Switzerland [24];

1.1% in the UK and Netherlands [25,26]. The samples were collected during the autumn months. Seasonal distribution of *E.coli* O157:H7 has been reported previously [25, 27], with highest prevalence in summer and lowest in winter, so it is possible that the contamination rate became more than 2% in summer months.

The samples were chosen from hamburgers which had made industrially, so the products were wrapped and sealed, and thus did not come into contact with the surrounding environment. It is possible that the contamination rate of hand made hamburgers with this bacteria are more higher, because of miss-handlings and cross contamination.

We used modified trypticase soy broth as enrichment medium. It has been proposed that the enrichment before plating on selective agar may increase the sensitivity of *E.coli* O157: H7 isolation compared to direct plating of test samples on selective agar [28, 17].

In this study, we did not use IMS (immuno magnetic separation) procedure for enrichment stage, because although many researchers have reported that IMS resulted in a greater detection rate for *E. coli* O157 in inoculated or noninoculated beef and bovine feces [29-33] but in contrary many other researchers have claimed that using IMS procedure were not significantly different from enrichment plating [17, 34].

After enrichment stage we used CT-SMAC agar for selective plating, because it has been described that the CT-SMAC agar medium yields the best results for selective cultivation of *E.coli* O157:H7 [19,26,17]. Although using rainbow agar (a new chromogenic medium for the detection of *E.coli* O157:H7) has been found to be more sensitive than CT-SMAC, but the difference was not significant [33].

We used m-PCR assay for confirming the non sorbitol fermenting colonies as *E.coli* O157:H7. Several groups of researchers have reported multiplex PCR to be a reliable identification method for *E. coli* O157:H7 [24,31,21]

We used primers specific for flagellar and somatic antigens genes in multiplex-PCR

assay, these antigens could be detected by immunological assays as well, but the main advantage of the employed m-PCR method is its ability to detect rough isolates or the isolates having a masked O antigen [22]. The method developed in this study can also detect O157 H serotype of *E.coli*, although we did not isolate this serotype in this study.

In this study we did not discriminate between shiga toxin producing strains and non- shiga toxin producing ones, although it is possible to include primers specific for these virulence genes, as well.

This multiplex PCR is a suitable method for rapid identification of *E. coli* O157:H7 to species level as it could speed up and simplify the identification procedures that could be completed in 1 working day. However, it is possible that rare sorbitol-positive O157:H7 strains may not be able to be detected using this method.

5- References:

- [1] Oksuz.O., Arici. M., Kurultay. S and Gumus. T (2004). Incidence of *Escherichia coli* O157: H7 in raw milk and white pickled cheese manufactured from raw milk in Turkey. Food Control; 15(6): 453-456
- [2] Coia, J.E (1998). Clinical, microbiological and epidemiological aspects of *Escherichia coli* O157 infection. FEMS Immunol. Med.Microbiol; 20: 1-9
- [3] Zhao. T., Doyle. M. P., Harmon. B. G., Brown. C.A., Eric Mueller. P.O and Parks. A. H (1998). Reduction of carriage of Enterohemorrhagic *Escherichia coli* O157: H7 in cattle by inoculation with probiotic bacteria. J. Clini. Microbiol; 36(3): 641-647
- [4] Nataro. J. P and Kaper. B (1998). Diarrheagenic *Escherichia coli*. Clin. Microbiol. Rev; 11: 142-201
- [5] Trevena. W. B., Hooper. R. S., Wray. C., Wilson. G. A., Cheasty. T and Domingue. G (1996). Verocytotoxin-producing *Escherichia coli* O157: H7 associated with companion animals. Vet. Rec; 138(16): 400
- [6] Whipp. S. C., Rasmussen. M. A and Cray. W. C. Jr (1994). Animals as a source of *Escherichia coli* Pathogenic for

- human beings. Journal of American Veterinary Medicine Association; 204: 1168-1175
- [7] Zhao.T., Doyle. M. P., Shave. J., Garber. L (1995). Prevalence of enterohemorrhagic *Escherichia coli* O157: H7 in a survey of dairy herds. Appl. Environ. Microbiol; 61: 1290-1293
- [8] Molina. P.M., Parma. A. E and Sanz. M.E (2003). Survival in acidic and alcoholic medium of shiga toxin-producing *Escherichia coli* O157: H7 and non-O157: H7 isolates in Argentina. BMC Microbiol; 13: 3-17
- [9] Van Donkersgoed. J., Graham. T and Gannon. V (1999). The prevalence of verotoxins, *Escherichia coli* O157: H7 and *Salmonella* in the feces and rumen of cattle at processing. Canadian Veterinary Journal; 40: 332-338
- [10] Elder, R.O., Keen, J.E., Siragusa, G.R., Barkocy-Gallagher, G. A., Koohmaraie, M., Laegreid, W. W (2000). Correlation of enterohemorrhagic *Escherichia coli* O157 prevalence in feces, hides, and carcasses of beef cattle during processing. Proc. Natl. Acad. Sci. U. S. A. 97, 2999-3003.
- [11] McEvoy, J.M., Doherty, A.M., Finnerty, M., Sheridan, J.J., McGuire, L., Blair, I.S.,
- [12] Gun, H., Yilmaz, A., Turker, S., Tanlasi, A., Yilmaz, H (2003). Contamination of bovine carcasses and abattoir environment by *Escherichia coli* O157:H7 in Istanbul. Int. J. Food Microbiol. 84, 339-344.
- [13] Mead, P.S., Griffin, P.M (1998). *Escherichia coli* O157:H7 (Seminar) . *Lancet* 352, 10, pp. 1207-1219.
- [14] Oldfield. E. C (2001). Emerging foodborne pathogens: Keeping your patient and your families safe. Reviews In Gastroenterological Disorders; 1(4): 177-186
- [15] March. C. B and Ratman. S (1986). Sorbitol-Mac Conkey medium for detection of *Escherichia coli* O157: H7 associated with hemorrhagic colitis. J. Clin. Microbiol; 23(5): 869-872
- [16] McDonough. P. L., Rossiter. C. A., Rebhun. R. B., Stehman. S. M, Lein. D. H and Shin. S. J (2000). Prevalence of *Escherichia coli* O157: H7 from cull dairy cows in new york state and comparison of culture methods used during preharvest food safety investigations. J. Clin. Microbiol; 38(1): 318-322
- [17] Sanderson. M.W., Gay. G. M., Hancock. D. D., Gay. C. C., Fox. L. K and Bess. T. E (1995). Sensitivity of bacteriologic culture for detection of *Escherichia coli* O157: H7 in bovine feces. J. Clin. Microbiol; 33(10): 2616-2619
- [18] Kimura. R., Mandrell. R. E., Galland. J. C., Hyatt. D and Riley. L. W (2000). Restriction-site-specific PCR as a rapid test to detect enterohemorrhagic *Escherichia coli* O157: H7 strains in environmental samples. Appl. Environ. Microbiol; 66(6): 2513-2519
- [19] De Boer. E and Heuvelink. A. E (2000). Methods for isolation of shiga toxin-producing *Escherichia coli*. Symp. Ser. Soc. Appl. Microbiol; 29:133s-134s
- [20] Pilpott. D and Ebel. F(2003). *E.coli*: shigatoxin methods and protocols. 1th edn. Humana Press Inc; PP: 9-45
- [21] Gannon, V.P.J., D'Souza, S., Graham, T., King, R.K., Rahn, K., Read, S (1997). Use of the flagellar H7 gene as a target in multiplex PCR assays and improved specificity in identification of enterohemorrhagic *Escherichia coli* strains. J. Clin. Microbiol. 35, 656-662.
- [22] Desmarchier. P. M., Bilge. S. S., Fegan. N., Mills. L., Vary. J. C and Tarr. P. I (1998). A PCR specific for *Escherichia coli* O157: H7 Based on *rfb* locus encoding O157 lipopolysaccharide. J. Clin. Microbiol; 36(6): 1801-1804
- [23] Chinen, I., Tanoro, J.D., Miliwebsky, E., Lound, L.H., Chillemi, G., Ledri, S., Baschkier, A., Scarpin, M., Manfredi, E., Rivas, M (2001). Isolation and characterisation of *Escherichia coli* O157:H7 from retail meats in Argentina. J. Food Prot. 64, 1346-1351.
- [24] Fantelli, K., Stephan, R (2001). Prevalence and characteristics of shigatoxin-producing *Escherichia coli* and *Listeria monocytogenes* strains isolated from minced meat in Switzerland. Int. J. Food. Microbiol. 70, 63-69.
- [24] Cebula, T.A., Payne, W.L., Feng, P (1995). Simultaneous identification of strains of *Escherichia coli* serotype

- O157:H7 and their Shiga-like toxin type by mismatch amplification mutation assay-multiplex PCR. *J. Clin. Microbiol.* 33, 248–250.
- [25] Fratamico, P.M., Sackitey, S.K., Wiedmann, M., Deng, M.Y. (1995). Detection of *Escherichia coli* O157:H7 by multiplex PCR. *J. Clin. Microbiol.* 33, 2188–2191.
- [25] Chapman, P., Siddons, C.A., Cerdan Malo, A.T., Harkin, M.A. (2000). A one year study of *Escherichia coli* O157 in raw beef and lamb products. *Epidemiol. Infect.* 124: 207–213.
- [26] Heuvelink, A.E., Zwartkruis-Nahuis, J.T.M., Beumer, R.R., De Boer, E. (1999). Occurrence and survival of verocytotoxin-producing *Escherichia coli* O157 in meats obtained from retail outlets in The Netherlands. *J. Food. Protect.* 62 (10), 1115–1122.
- [27] Cagney, C., Crowley, H., Duffya, G., Sheridan, J.J., O'Brien, S., Carney, E., Anderson, W., McDowell, D.A., Blair, I.S., Bishop, R.H. (2004). Prevalence and numbers of *Escherichia coli* O157:H7 in minced beef and beef burgers from butcher shops and supermarkets in the Republic of Ireland. *Food Microbiol.* 21: 203–212
- [28] Chapman, P.A., Ackroyd, H.J. (1997). Farmed deer as a potential source of verocytotoxin-producing *Escherichia coli* O157. *Vet Rec.* 20;141(12):314-5.
- [29] Chapman, P. A., Wright, D.J., Siddons, C. A. (1994). A comparison of immunomagnetic separation and direct culture for the isolation of verocytotoxin-producing *Escherichia coli* O157 from bovine feces. *J. Med. Microbiol.* 40, 424–427.
- [30] Bennett, A.R., MacPhee, S., Betts, R.P. (1996). The isolation and detection of *Escherichia coli* O157 by use of immunomagnetic separation and immunoassay procedures. *Lett. Appl. Microbiol.* 22, 237–243.
- [31] Fratamico, P.M., Schultz, F. J., Buchanan, R.L. (1992). Rapid Isolation of *Escherichia coli* O157:H7 from Enrichment Cultures of Food Using an Immunomagnetic Separation Method. *Food. Microbiol* 9: 105–113.
- [32] Fratamico, P.M., Bagi, L.K., Pepe, T. (2000). A multiplex polymerase chain reaction assay for rapid detection and identification of *Escherichia coli* O157:H7 in foods and bovine feces. *J. Food Prot.* 62, 1032–1037.
- [33] Tutenel, A.V., Pierard, D., Vandekerchove, D., Van Hoof, J., De Zutter, L. (2003). Sensitivity of methods for the isolation of *Escherichia coli* O157 from naturally infected bovine feces. *Vet. Microbiol.* 94, 341–346.
- [34] Varela-Hernández, J.J., Cabrera-Diaz, E., Cardona-López, M.A., Ibarra-Velázquez, L.M., Rangel-Villalobos, H., Castillo, A., Torres-Vitela, M.R., Ramírez-Álvarez, A. (2007). Isolation and characterization of Shiga toxin-producing *Escherichia coli* O157:H7 and non-O157 from beef carcasses at a slaughter plant in Mexico. *Int. J. Food Microbiol.* 113: 237–241

جداسازی و شناسائی باکتری اشیریشیا کولا O157: H7 از نمونه های همبرگر در شهرستان مشهد با استفاده از روش مولتی پلکس PCR

عبدا..جمشیدی^{۱*}، محمد رضا بسامی^۲، سعید خانزادی^۳، وجیهه سلطانی نژاد^۴

- ۱- گروه بهداشت غذا، دانشکده علوم دارویی دامی، دانشگاه فردوسی مشهد
- ۲- گروه علوم کلینیکی، دانشکده علوم دارویی دامی، دانشگاه فردوسی مشهد
- ۳- گروه بهداشت غذا، دانشکده علوم دارویی دامی، دانشگاه فردوسی مشهد
- ۴- فارغ التحصیل گروه بهداشت غذا، دانشکده علوم دارویی دامی، دانشگاه فردوسی مشهد

چکیده

تعداد یکصد نمونه همبرگر از بیج های مختلف که بصورت صنعتی تولید شده بود در فصل پاییز از سطح فروشگاههای عرضه مواد غذایی در شهرستان مشهد تهیه گردید. جهت جداسازی باکتری اشیریشیا کولا O157: H7، نمونه ها ابتدا در محیط آبگوشت Trypticase soy حاوی آنتی بیوتیک نوبیوسین غنی سازی گردید. سپس در محیط آگار انتخابی سوربیتول مک کانکی حاوی سیفیکسیم و تلوریت پتاسیم کشت داده شد، از کلنی های غیر تخمیر کننده سوربیتول با آزمایشات بیوشیمیایی باکتری اشیریشیا کولای مورد شناسائی قرار گرفت. سپس با روش مولتی پلکس PCR با استفاده از دو جفت پرایمر اختصاصی ژنهای سوماتیک و فلاژلار، سروتیب O157:H7 مورد شناسائی قرار گرفت. روش مولتی پلکس PCR که در این مطالعه مورد استفاده قرار گرفت می تواند به عنوان جایگزین روشهای ایمونولوژیک که حضور آنتی ژنهای سوماتیک و فلاژلار را مورد شناسائی قرار می دهد مطرح باشد. در این مطالعه از تعداد ۹ نمونه همبرگر، کلنی های غیر تخمیر کننده سوربیتول جدا سازی گردید که در روش m-PCR در تعداد دو نمونه (۲٪) آلودگی به باکتری اشیریشیا کولای O157:H7 مورد تایید قرار گرفت.

کلید واژه گان: اشیریشیا کولا O157: H7، مولتی پلکس PCR، همبرگر.