

PHOTO QUIZ

What is your diagnosis?

A young boy presented with difficulty in speech discrimination and tinnitus in the left ear. Audiometry showed high frequency hearing loss in the left ear.

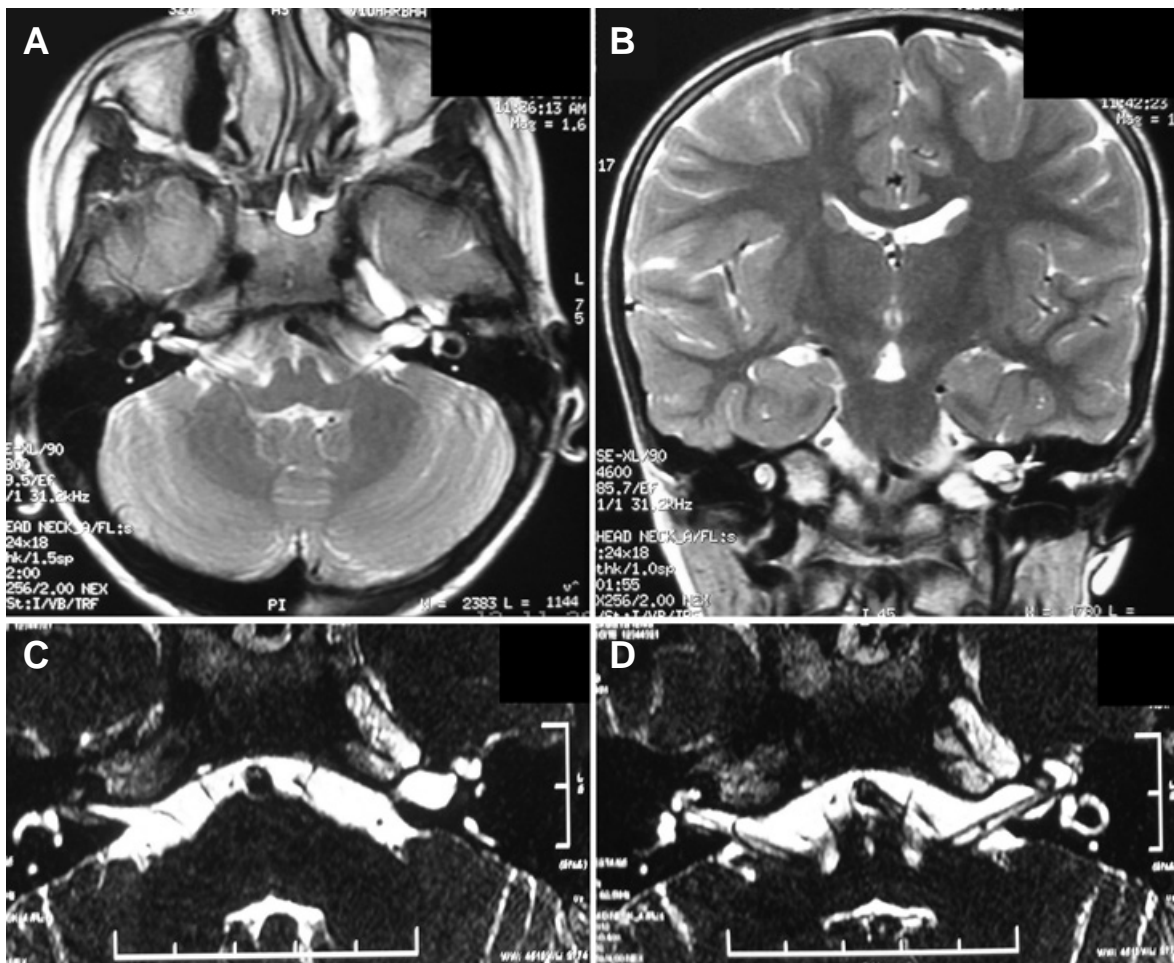


Fig. 1. A 14-year-old boy presented with difficulty in speech discrimination and tinnitus.

A&B. T2W MR images showing an intracanalicular hyperintense lesion involving the left internal acoustic meatus.

C&D. CISS 3D MR images showing an intracanalicular hyperintense lesion involving the left internal acoustic meatus.

What is your diagnosis?