

Predictive Value of Radiographic Measurements as a Diagnostic Marker of Systolic Heart Failure in a Retrospective Study: An Old Method, a New Approach

Tolga Aksu,^{1*} Tumer Erdem Guler,¹ Veli Kaya,² Nurcan Arat,³ and Omac Tufekcioglu⁴

¹Cardiology Department, Derince Training and Research Hospital, University of Health Sciences, Kocaeli, Turkey

²Cardiology Department, Mersin State Hospital, Mersin, Turkey

³Cardiology Department, Istanbul Bilgi University, Faculty of Medicine, Istanbul, Turkey

⁴Cardiology Department, Turkiye Yuksek Ihtisas Education and Research Hospital, Ankara, Turkey

*Corresponding author: Tolga Aksu, Cardiology Department, Derince Training and Research Hospital, University of Health Sciences, Kocaeli, Turkey. Tel: +90-5319903278, Fax: +90-2623178000, E-mail: aksutolga@gmail.com

Received 2014 November 18; Revised 2014 December 13; Accepted 2014 December 27.

Abstract

Background: A number of earlier studies have attempted to establish the validity of various radiological parameters for the assessment of cardiac enlargement, but these were not fully quantitative as echocardiographic measurements.

Objectives: In our study, we aimed to determine the diagnostic accuracy of certain radiological parameters including the cardiothoracic ratio (CTR), cardiac area (CA) and cardiac volume (CV), derived from posteroanterior (PA) and lateral chest X-rays (CXR) in patients with impaired left ventricular ejection fraction (LVEF) suffering from dyspnea by comparing them with echocardiographic measurements of left ventricular (LV) dimensions and LVEF.

Patients and Methods: This retrospective study included 374 patients (258 females and 116 males) aged 35 to 78 years with the complaint of dyspnea. CXR and echocardiographic examination were performed on each patient upon admission. Based on LVEF, the patients were divided into two groups: Group 1 consisted of patients with impaired LVEF (< 50%) and group 2 consisted of patients with normal LVEF (\geq 50%). The sensitivity, specificity, and cut-off points were evaluated by both receiver-operator characteristic (ROC) analyses and area under the ROC curve (AUC) to determine the diagnostic accuracy of CA, CV, and CTR.

Results: There was no significant relationship between CTR and LVEF, but CA and CV showed a strong correlation with LVEF ($P < 0.001$ and $P < 0.00001$, respectively). LV dimensions correlated better with CV than with CA ($P < 0.00001$ and $P < 0.0001$, respectively). According to the analysis of ROC curves, the best cut-off value for CV for the diagnosis of systolic heart failure was 825 mL.

Conclusion: The CV value correlated more closely with low LVEF and more accurately indicated an enlarged heart than CA or CTR. This may be due to the fact that an anteroposterior measurement of heart size is included in the former but not the latter two measurements. These study results may help quantify left heart enlargement with greater accuracy than may be obtained from standard CXR.

Keywords: Mass Chest X-Ray, Ejection Fraction, Ventricular

1. Background

Dyspnea is a frequently encountered symptom in daily clinical practice, and differential diagnosis is the cornerstone in management of patients. Heart failure (HF) is one of the most common causes of dyspnea. Clinical examination alone is usually unreliable for differential diagnosis of dyspnea, and demonstrating objective evidence of left ventricular (LV) dysfunction is crucial to correctly diagnosing HF (1, 2). Transthoracic echocardiography (TTE) is currently the most commonly used imaging modality for the diagnosis of HF, and will remain so for the foreseeable future. It provides a good general assessment of LV function. However, it is limited in patients with poor acoustic windows, it requires geometric assumptions in quantifying global LV systolic function, and its ability to provide specific tissue

characterization is modest. Cardiac magnetic resonance (CMR) imaging is a highly accurate and reproducible imaging technique for the assessment of left and right ventricular volumes and global function. Additional information can be obtained when CMR is used with a contrast agent (3).

However, TTE and CMR are not available in every hospital and cannot be applied by all physicians. European Society of Cardiology (ESC) guidelines for HF indicate that a chest X-ray (CXR) is of limited but common use in the diagnostic work-up of patients with suspected HF (4). It has been concluded that LV systolic dysfunction may be present without cardiomegaly on the CXR. The cardiothoracic ratio (CTR) has been used to determine heart size in relevant reports. However, measurement of the car-

diac area (CA) and cardiac volume (CV) with a plain radiograph, which is an old and little known technique, may more accurately predict the size of the heart. We aimed to demonstrate the diagnostic accuracy of radiographic measurements that are easily available in general hospitals for quantifying LV function and LV dimensions.

We compared left ventricular end-diastolic diameter (LVEDD), left ventricular end-systolic diameter (LVESD), and left ventricular ejection fraction (LVEF) derived from TTE with radiographic indices derived from posteroanterior (PA) and lateral CXR in patients presenting with dyspnea.

2. Objectives

In our study, we aimed to determine the diagnostic accuracy of certain radiological parameters including the cardiothoracic ratio (CTR), cardiac area (CA) and cardiac volume (CV), derived from posteroanterior (PA) and lateral CXR in patients with impaired left ventricular ejection fraction (LVEF) suffering from dyspnea by comparing them with echocardiographic measurements of left ventricular (LV) dimensions and LVEF.

3. Patients and Methods

3.1. Patients

This retrospective study group consisted of 374 (258 females and 116 males) untreated patients who attended the outpatient clinic of the Department of Cardiology at the Türkiye Yüksek İhtisas Education and Research Hospital for the differential diagnosis of dyspnea. Each patient's ECG, CXR, and TTE recordings were analyzed, and recordings were reviewed for physical examination findings, initial clinical presentation, family history, past medical history, smoking status, and New York Heart Association (NYHA) functional class. Presence of HF was detected by TTE. Based on LVEF, the patients were divided into two groups: Group 1 consisted of patients with impaired LVEF (< 50%) and group 2 consisted of those with normal LVEF (\geq 50%) in line with the recommendations of the relevant guidelines (4). The patients with moderate or severe valvular pathology or pericardial effusion were excluded. Echocardiographic images and plain radiographs were evaluated by two independent observers. All radiographic images were checked by a radiologist who was blinded to the clinical characteristics and echocardiographic data of the patients. A flowchart illustrating the selection of study patients is presented in Figure 1.

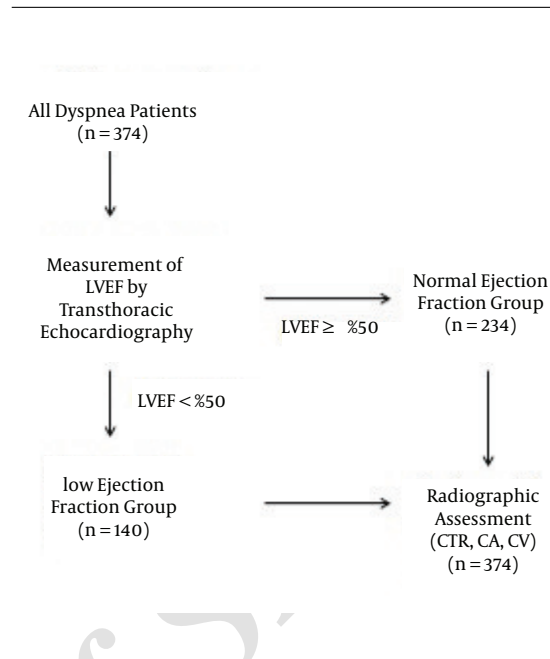


Figure 1. Flow chart illustrating the selection of patients; Abbreviations: CA, cardiac area; CTR, cardiothoracic ratio; CV, cardiac volume; LVEF, left ventricular ejection fraction.

The protocol was approved by the ethical committee of the Türkiye Yüksek İhtisas education and research hospital. Written consent was not obtained because of the retrospective design of the study.

3.2. Radiographic Assessment

The radiographic assessment was performed by a direct radiography (DR) system (Axiom Aristos, Siemens Medical Solutions, USA) in the radiology unit. The technicians were made blind to the results of the other investigations. CTR was evaluated solely via PA erect radiograph (Figure 2). No Antero-posterior (AP), supine, or seated films were accepted. CV was measured by using the method described by Keats and Enge (5) (Figure 2).

The length diameter (L) is measured from the junction of the superior vena cava to the cardiac apex. The broad diameter (B) is taken from the junction of the right atrium and the diaphragm and the junction of the pulmonary artery. D represents the greatest horizontal diameter of the heart in lateral film. Thus, the calculation of CV requires both a PA and lateral film. K is a constant (0.63), and the value of K varies with different focal-film distances. In our study, the focal-film distance was 150 cm for a K value of 0.39. CA was calculated as described by Ungerleider and Gubner (6) (Equation 1):

$$CA = B \times L \times \left(\frac{\pi}{4}\right) \quad (1)$$

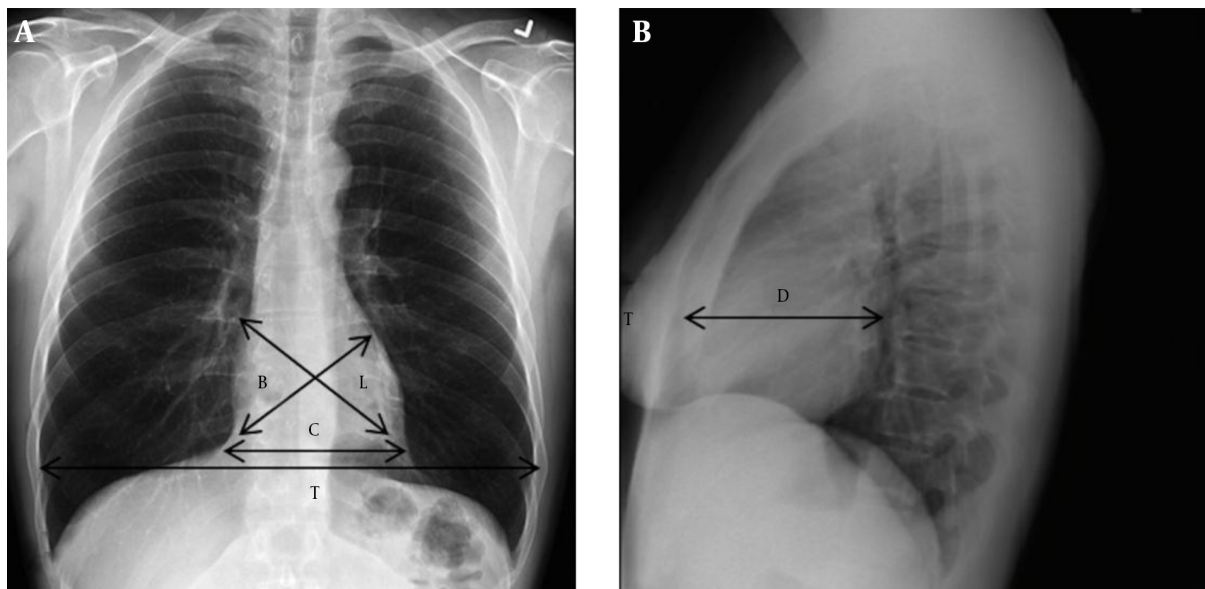


Figure 2. The measurements of cardiothoracic ratio, cardiac area, and cardiac volume are shown on posteroanterior (A) and lateral (B) chest X-Rays. B, from the right cardiophrenic angle to the base of the main pulmonary artery segment; D, the greatest cardiac diameter on the lateral film; and L, from the junction of the right atrium and superior vena cava to the apex. Abbreviations: CA, cardiac area; CV, cardiac volume: $CV = L \times B \times D \times K$.

3.3. Echocardiographic Study

A skilled echocardiographer blind to the clinical features of the patients performed the echocardiographic study using a Vivid 7 (GE Healthcare, Horten, Norway) ultrasound system. Basic measurements included LV diameters and LA diameters by 2D echocardiography with settings per recommendations by the American Society of Echocardiography (7). Left ventricular volumes and LVEF were calculated by using the biplane method (modified Simpson's rule) as recommended by the American Society of Echocardiography (8).

3.4. Statistical Analysis

Statistical analysis was performed with the SPSS/PC software package (version 15.0 for Windows; SPSS Inc., Chicago, IL, USA). Categorical data are reported as proportions, and continuous variables are expressed as mean \pm standard deviation. Frequency comparisons were made using the t-test, Kruskal-Wallis test, Mann-Whitney U test, and chi-square test as appropriate. Analyses of continuous variables were performed using the Student's t-test or analysis of variance (ANOVA) for comparison of normally distributed data. In addition, the association between CXR and TTE-based parameters was assessed using the Spearman's rank correlation test. Receiver operating characteristic (ROC) curves were drawn to quantify the ability of CTR, CA, and CV to predict outcome and constructed to determine the cut-off value with the highest discriminating

power. ROC curve analyses are graphically represented. For the cut point of CV, sensitivity and specificity were reported. Statistical significance was set at a $P < 0.05$. All reported probability values were two-sided.

4. Results

The median age of the studied population was 59 ± 12 years with a male to female ratio of 0.31. Demographic data are shown in Table 1. Group 1 consisted of 81 males and 59 females. In all groups, the mean CTR, CA, and CV values were 0.59 ± 0.09 , $161 \pm 47 \text{ cm}^2$, and $584 \pm 186 \text{ mL}$, respectively. The CXR indices of group 1 and group 2 are represented in Table 2. There was no significant relationship between CTR and LVEF. The relation between LVEF and various radiographic indices is shown in Table 3 and Figures 3 and 4.

According to the analysis of ROC curves, the best cut-off value for CV for the diagnosis of HF was 825 mL. In the analysis of all patients, the area under the ROC curve of CV was 0.712 (Figure 5). The sensitivity and specificity of CV in the diagnosis of HF are shown in Table 4 and Figure 5.

5. Discussion

Dyspnea is a commonly seen problem in patients presenting to the emergency department. The etiology of

Table 1. Clinical Demographic Data in Two Groups of Patients Determined Based on Left Ventricular Ejection Fraction^a

Demographics	Group 1		Group 2	
	Number or Mean (SD)	Percent	Number or Mean (SD)	Percent
NYHA I	10	7	40	17
NYHA II	68	49	106	45
NYHA III	32	23	50	21
NYHA IV	30	21	38	16
Orthopnea	57	41	85	36
Angina ^a	67	48	11	5
Pretibial edema	20	14	54	23
Ascites	10	7	38	16
Rales	36	26	64	27
Height	1.64 (0.1)		1.66 (0.1)	
Weight	83.3 (14.8)		82.2 (12.5)	

Abbreviation: NYHA, New York Heart Association.

^aGroup 1 consisted of patients with impaired left ventricular ejection fraction (< 50%) and group 2 consisted of those with normal left ventricular ejection fraction (≥ 50%).

Table 2. Plain Chest X-ray Parameters in Two Groups^a

	Group 1				Group 2			
	Mean	Standard Deviation	Minimum	Maximum	Mean	Standard Deviation	Minimum	Maximum
CTR	0.60	0.06	0.44	0.78	0.56	0.09	0.31	0.64
CA ^a	174	53	116	413	146	42	84	216
CV ^b	667	223	186	1,408	485	206	252	733

Abbreviations: CA, cardiac area; CTR, cardiothoracic ratio; CV, cardiac volume.

^aGroup 1 consisted of patients with impaired left ventricular ejection fraction (< 50%) and group 2 consisted of those with normal left ventricular ejection fraction (≥ 50%).

^bP < 0.0001.

^cP < 0.00001.

Table 3. Relations Between the Different Echocardiographic Measures of Left Ventricular Function and Chest X-ray Indices

	LVEDD		LVESD		LVEF	
	Correlation Coefficient	P Value	Correlation Coefficient	P Value	Correlation Coefficient	P Value
CTR	.031	0.344	.062	0.059	.208	0.05
CA	.19	< 0.0001	.19	< 0.0001	.29	< 0.001
CV	.36	< 0.00001	.35	< 0.00001	.37	< 0.00001

Abbreviations: CA, cardiac area; CTR, cardiothoracic ratio; CV, cardiac volume; LVEDD, left ventricular end-diastolic diameter; LVEF, left ventricular ejection fraction; LVESD, left ventricular end-systolic diameter.

dyspnea is usually challenging because many clinical conditions should be kept in mind in the differential diagnosis. Correct diagnosis, especially in situations that require rapid intervention, can be life saving. Cardiovascular causes of dyspnea are associated with severe morbidity and mortality (9, 10). Although history and physical exam-

ination play an important role in the differential diagnosis of cardiovascular causes from the other etiologies, the symptoms are usually similar, and the gold standard for diagnosis is TTE. However, echocardiography devices and a physician who can evaluate the results of echocardiography are not available in many centers.

Table 4. Sensitivity and Specificity and Receiver Operating Characteristics Analysis of X-ray Indices in the Diagnosis of Heart Failure

Sample	ROC Curve Area	Standard Error	Cut Off	Sensitivity	Specificity
CTR	0.543	0.019	NA	NA	NA
CA	0.577	0.019	NA	NA	NA
CV	0.712	0.017	900; 550	45; 95	95; 40

Abbreviations: CA, cardiac area; CTR, cardiothoracic ratio; CV, cardiac volume; ROC, receiver operating characteristic; NA, not available.

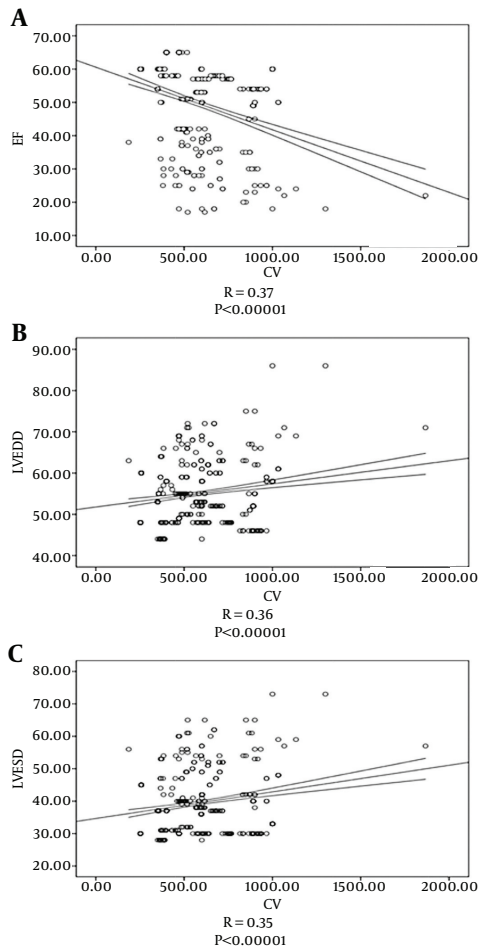


Figure 3. Correlation between echocardiographic parameters and cardiac volume. Parameters are A, ejection fraction; B, left ventricular end-diastolic diameter, and C, left ventricular end-systolic diameter. Spearman's rank test showed a significant positive correlation between CV and LV dimensions and a significant negative correlation between CV and LVEF. Abbreviations: CV, cardiac volume; LVEF, left ventricular ejection fraction; LVEDD, left ventricular end-diastolic diameter; LVESD, left ventricular end-systolic diameter; EF, ejection fraction.

In contrast, direct radiographic study is available at almost all hospitals and does not require expertise in cardiology for the interpretation of the findings. Radiographic

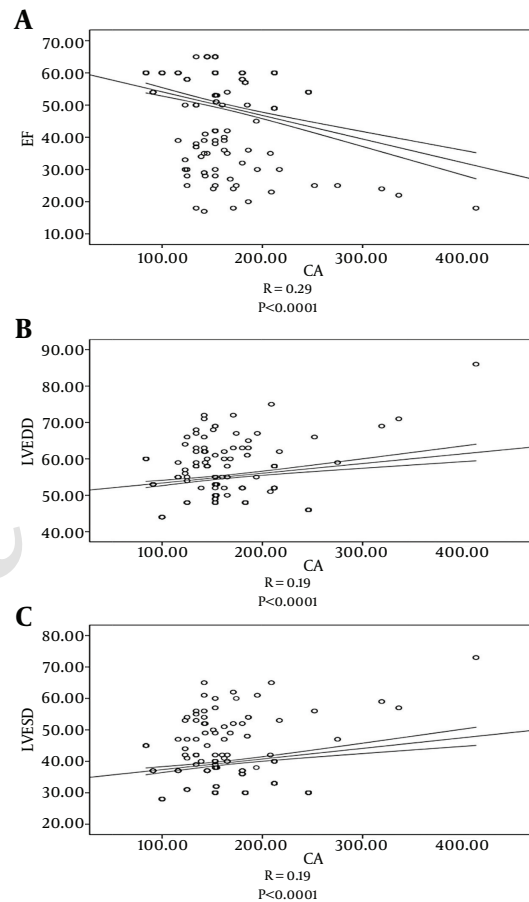


Figure 4. Correlation between echocardiographic parameters and cardiac area. Parameters are A, ejection fraction; B, left ventricular end-diastolic diameter, and C, left ventricular end-systolic diameter. Spearman's rank test showed a moderately significant positive correlation between CA and LV dimensions and a significant negative correlation between CA and LVEF. Abbreviations: CA, cardiac area; LVEF, left ventricular ejection fraction; LVEDD, left ventricular end-diastolic diameter; LVESD, left ventricular end-systolic diameter; EF, ejection fraction.

study is also cheaper and can be applied quickly. Several studies in adults have compared radiographic and angiographic data and have generally found a good correlation between radiographic CV's and various angiographic left heart measurements (5, 6, 11).

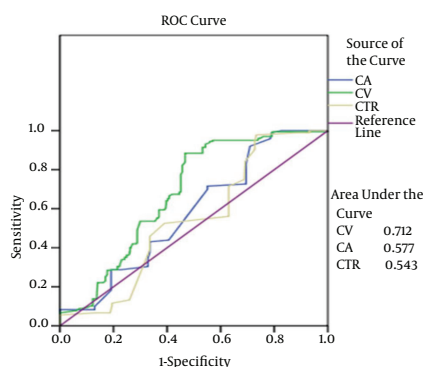


Figure 5. Receiver operating characteristic curve analysis; diagnostic performance of CV, CA, and CTR in the detection of systolic HF (LVEF < 50%); SE: 0.05. Area under the receiver operating characteristic curve values of CV, CA, and CTR in systolic HF from the study; Abbreviations: CA, cardiac area; CTR, cardiothoracic ratio; CV, cardiac volume; LVEF, left ventricular ejection fraction.

There are contradictory results in the literature concerning the comparison of echocardiographic and radiological cardiac dimensions. Davidson et al. (12) demonstrated that although there was a significant correlation between the radiographic total CV and echocardiographic ventricular volumes, especially in left-sided pathologies, CTR and CA did not correlate well with echocardiographic measurements. However, Lewis (13) found a high degree of correlation between CA and LVEDV in patients with pure aortic valve insufficiency. In addition, Glover et al. (14) demonstrated that CV gives the greatest diagnostic accuracy for measurement of the left ventricular dimensions (79%) when compared with CTR.

In our study, we found a strong relationship between echocardiographic dimensions and CA and CV in patients with dyspnea. Therefore, we believe that physicians may use CA and CV measurements in the differential diagnosis of patients presenting to emergency departments with dyspnea, which is a cheaper and more rapidly available diagnostic tool.

There is no absolute standard for the diagnosis of HF, although TTE is accepted as the gold standard. In this study, we aimed to define the potential role of CXR in the diagnosis of systolic HF and LV enlargement in outpatient cardiology clinics. However, the potential usage of CXR may be to identify patients requiring assessment by TTE in emergency departments. The patients in this study were diagnosed on the basis of symptoms compatible with HF in the presence of objective evidence of left ventricular dysfunction (LVEF < 50%). Because this was a retrospective study, it is not possible to be certain of the standardization for chest radiography. Poor inhalation can cause an overestimated CTR. The wide scatter of the points suggests that this was

not a systematic error.

In conclusion, CV on chest radiography may be a satisfactory, cheap, and easily available method for diagnosing cardiac enlargement or HF.

5.1. Limitations

This study was a retrospectively and cross-sectionally designed single center study, which means that statistical power of the correlation between echocardiographic and radiographic parameters may be weaker. To overcome these limitations, the patients for whom echocardiographic and radiologic evaluations were performed at the same period were included in study. Another major limitation of this study is that we excluded patients with moderate or severe valvular pathology or pericardial effusion. It is well known that these conditions are common among HF patients, and excluding them will affect the results. In addition, the etiology of HF and diastolic HF were not taken into consideration because echocardiographic or radiological cardiac dimensions may vary due to underlying conditions. The cut-off point for LVEF (50%) may be questionable. However, entirely normal ejection fraction is accepted as > 50% in the relevant guideline. Therefore, we used 50% as the cut-off point in our study.

Acknowledgments

We thank all of the cardiology staff at the Turkiye Yuksek Ihtisas Hospital.

Footnotes

Authors' Contribution: Tolga Aksu conceived of and designed this study and collected all patient data. Tumer Erdem Guler and Veli Kaya participated in the study design and performed the statistical analysis. Nurcan Arat and Omac Tufekcioglu drafted the manuscript and gave final approval of the version to be published. All authors read and approved the final manuscript.

Financial Disclosure: None declared.

Funding/Support: None declared.

References

1. Harlan WR, oberman A, Grimm R, Rosati RA. Chronic congestive heart failure in coronary artery disease: clinical criteria. *Ann Intern Med.* 1977;**86**(2):133-8. [PubMed: 835934].
2. Stevenson LW, Perloff JK. The limited reliability of physical signs for estimating hemodynamics in chronic heart failure. *JAMA.* 1989;**261**(6):884-8. [PubMed: 2913385].

3. Karamitsos TD, Francis JM, Myerson S, Selvanayagam JB, Neubauer S. The role of cardiovascular magnetic resonance imaging in heart failure. *J Am Coll Cardiol*. 2009;**54**(15):1407-24. doi: [10.1016/j.jacc.2009.04.094](https://doi.org/10.1016/j.jacc.2009.04.094). [PubMed: [19796734](https://pubmed.ncbi.nlm.nih.gov/19796734/)].
4. McMurray JJ, Adamopoulos S, Anker SD, Auricchio A, Bohm M, Dickstein K, et al. ESC Guidelines for the diagnosis and treatment of acute and chronic heart failure 2012: The Task Force for the Diagnosis and Treatment of Acute and Chronic Heart Failure 2012 of the European Society of Cardiology. Developed in collaboration with the Heart Failure Association (HFA) of the ESC. *Eur Heart J*. 2012;**33**(14):1787-847. doi: [10.1093/eurheartj/ehs104](https://doi.org/10.1093/eurheartj/ehs104). [PubMed: [2261136](https://pubmed.ncbi.nlm.nih.gov/2261136/)].
5. Keats TE, Enge IP. Cardiac mensuration by the cardiac volume method. *Radiology*. 1965;**85**(5):850-5. doi: [10.1148/85.5.850](https://doi.org/10.1148/85.5.850). [PubMed: [5844523](https://pubmed.ncbi.nlm.nih.gov/5844523/)].
6. Ungerleider HE, Gubner R. Evaluation of heart size measurements. *American Heart Journal*. 1942;**24**(4):494-510. doi: [10.1016/s0002-8703\(42\)90966-9](https://doi.org/10.1016/s0002-8703(42)90966-9).
7. Gottdiener JS, Bednarz J, Devereux R, Gardin J, Klein A, Manning WJ, et al. American Society of Echocardiography recommendations for use of echocardiography in clinical trials. *J Am Soc Echocardiogr*. 2004;**17**(10):1086-119. doi: [10.1016/j.echo.2004.07.013](https://doi.org/10.1016/j.echo.2004.07.013). [PubMed: [15452478](https://pubmed.ncbi.nlm.nih.gov/15452478/)].
8. Schiller NB, Shah PM, Crawford M, DeMaria A, Devereux R, Feigenbaum H, et al. Recommendations for quantitation of the left ventricle by two-dimensional echocardiography. American Society of Echocardiography Committee on Standards, Subcommittee on Quantitation of Two-Dimensional Echocardiograms. *J Am Soc Echocardiogr*. 1989;**2**(5):358-67. [PubMed: [2698218](https://pubmed.ncbi.nlm.nih.gov/2698218/)].
9. Mahler DA, Mejia R. In: Dyspnea. Davis GS, editor. New York: Marcel Dekker; 1999. pp. 221-32.
10. Kunitoh H, Watanabe K, Sajima Y. Clinical features to predict hypoxia and/or hypercapnia in acute asthma attacks. *J Asthma*. 1994;**31**(5):401-7. [PubMed: [7928936](https://pubmed.ncbi.nlm.nih.gov/7928936/)].
11. Clark AL, Coats AJ. Unreliability of cardiothoracic ratio as a marker of left ventricular impairment: comparison with radionuclide ventriculography and echocardiography. *Postgrad Med J*. 2000;**76**(895):289-91. [PubMed: [10775282](https://pubmed.ncbi.nlm.nih.gov/10775282/)].
12. Davidson A, Krull F, Kallfelz HC. Cardiomegaly-what does it mean? A comparison of echocardiographic to radiological cardiac dimensions in children. *Pediatr Cardiol*. 1990;**11**(4):181-5. doi: [10.1007/BF02238363](https://doi.org/10.1007/BF02238363). [PubMed: [2148819](https://pubmed.ncbi.nlm.nih.gov/2148819/)].
13. Lewis RP, Bristow JD, Griswold HE. Radiographic heart size and left ventricular volume in aortic valve disease. *Am J Cardiol*. 1971;**27**(3):250-3. [PubMed: [5101316](https://pubmed.ncbi.nlm.nih.gov/5101316/)].
14. Glover L, Baxley WA, Dodge HT. A quantitative evaluation of heart size measurements from chest roentgenograms. *Circulation*. 1973;**47**(6):1289-96. [PubMed: [4267844](https://pubmed.ncbi.nlm.nih.gov/4267844/)].