



Effect of the Internal Septum Extract of the Walnut Kernel on the Mesenchymal Stem Cells Cycle and MSCs-derived Insulin-Producing B-cells Differentiation and Glucose Uptake

Fatemeh Aghapour SK¹ and Sajjad Sisakhtnezhad ^{1,*}

¹Department of Biology, Faculty of Science, Razi University, Kermanshah, Iran

*Corresponding author: Department of Biology, Faculty of Science, Razi University, Kermanshah, Iran. Tel/Fax: +98-8334274545, Emails: s.sisakhtnezhad@razi.ac.ir; ssisakhtnezhad@gmail.com

Received 2021 April 04; Revised 2021 May 26; Accepted 2021 May 26.

Abstract

Background: For years, scientists have been striving to identify compounds to improve the characteristics and functions of cells for therapeutic applications.

Objectives: This study aimed to evaluate the effect of the aqueous decoction of the internal septum of the walnut kernel (DISWK) on the survival, total antioxidant capacity (TAC), and cell cycle of rat bone marrow-derived mesenchymal stem cells (rBM-MSCs). We also evaluated the expression of genes involved in pancreatic insulin-producing β -cell (IPCs) commitment and glucose uptake in MSCs-derived IPCs.

Methods: The rBM-MSCs were isolated, and then the cytotoxic and antioxidant effects of DISWK on the cells were examined by the MTT and TAC assays, respectively. Moreover, the influence of DISWK on the rBM-MSCs cell cycle was evaluated by PI-staining and flow-cytometry analysis. Next, the rBM-MSCs were transdifferentiated into IPCs treated with DISWK. Finally, *Ins1/2*, *Insr*, *Glut1*, *Glut4*, and *Pdx1* genes expression was investigated in the DISWK-treated IPCs by qRT-PCR.

Results: The results indicated that DISWK significantly reduced the viability of rBM-MSCs in a dose- and time-dependent manner and decreased their TAC in long-term cultures. Moreover, it suppressed the rBM-MSCs cell cycle at S and G2 phases. The gene expression analysis showed that DISWK significantly upregulated *Ins1/2*, *Insr*, and *Glut1* genes and downregulated *Pdx1* gene in the rBM-MSCs-derived IPCs.

Conclusions: Decoction of the internal septum of walnut kernel suppresses the MSCs cell cycle and may prevent IPCs development via inhibiting *Pdx1*. It may also help glucose uptake by upregulating *Ins1/2*, *Insr*, and *Glut1* genes expression in MSCs-derived IPCs.

Keywords: Mesenchymal Stem Cell, Insulin-Producing B-cell, Proliferation, Differentiation, Glucose Uptake, Walnut Septum

1. Background

Mesenchymal stem cells (MSCs) and MSCs-derived insulin-producing cells (IPCs) are valuable cells for therapeutic applications. Therefore, during the past decade, researchers have tried to identify new external small molecules and regulators to improve the biological characteristics of these cells for their therapeutic applications, especially for the treatment of diabetes mellitus. Diabetes mellitus is a chronic metabolic disorder characterized by hyperglycemia and autoimmune destruction of beta-cells islets (type 1 diabetes), extensive defection and depletion of β -cells, and insulin resistance in the peripheral tissues (type 2 diabetes) (1). There are several drugs and methods to improve glycemic control and treat diabetes. In this regard, restoring pancreatic β -cells through replacement therapy by the potential therapeutic approaches, such as

the induction of the β -cell regeneration or islet of Langerhans transplantation, has attracted special attention for the prevention and treatment of diabetes (1, 2).

Mesenchymal stem cells have various sources and unique characteristics, which make them one of the most important cells in regenerative medicine (3). Importantly, these cells can be converted to physiologically well functional insulin-producing β -cells (IPCs) in vitro and transplanted to diabetic patients as a source of alternative islets (4). Although the postnatal maturation of the pancreas is still unknown, Pdx1, MafA, NeuroD, preproinsulin, insulin, Glut2, and glucokinase are known as important factors for the development and function of mature β -cells (5, 6).

Nowadays, the differentiation of MSCs and formation of IPCs have been performed using treatment of the cells with specific growth factors and small molecules (7, 8). For

example, Zang et al. cultured rat bone marrow-derived MSCs (rBM-MSCs) in a serum-free medium in the presence of β -mercaptoethanol, nicotinamide, and a high glucose concentration. Then, they achieved incompletely differentiated IPCs that expressed insulin (4). However, other modified protocols were used with more effective inducers, and other types of MSCs derived from different sources, which ultimately yielded favorable results (5, 9).

During the past decade, researchers have tried to identify new compounds influencing the biological characteristics of MSCs and IPCs for improving their therapeutic applications. Nowadays, medicinal herbs and their natural bioactive compounds have received significant attention in biomedical studies. Walnut (*Juglans regia* L.), as a well-known member of the Juglandaceae family, is one of the most broadly studied plants in both phytochemical and pharmacological aspects. Different parts of the walnut tree have been commonly used in food and dyeing industries and in medicine as a traditional remedy to treat a variety of health-related conditions. The identification of a wide range of biological constituents in the internal septum of walnut kernel and their pharmaceutical and safety properties have introduced the walnut septum as a natural herbal material with valuable properties. Phytochemical analyses have indicated that the walnut septum is a rich source of polysaccharides, phytosterols (beta-sitosterol and campesterol), and secondary metabolites like polyphenols (including gentisic acid, p-coumaric acid, ferulic acid, hyperosid, isoquercitrin, quercitrin, quercetin, epicatechin, catechin, syringic acid, gallic acid, protocatechuic acid, and vanillic acid), which are introduced to be responsible for a range of biopharmaceutical activities of the walnut septum.

Although different studies have confirmed several biological activities of the internal septum extract of walnut kernel (10-14), there is a scarcity of studies regarding its effect on the characteristics and functions of MSCs and MSCs-derived IPCs.

2. Objectives

In the present study, we investigated the effect of the aqueous decoction of the internal septum of walnut kernel (DISWK) on the rBM-MSCs cell cycle and on the expression of genes involved in insulin-producing β -cell commitment and glucose uptake in rBM-MSCs-derived IPCs.

3. Methods

3.1. Animals and Plant Materials

Four-week-old male Wistar rats were purchased from Kermanshah University of Medical Sciences (Kermanshah,

Iran). Open-air sun-dried Persian walnut (*Juglans regia* L.) fruit was prepared from Sisakht (Kohkiluyeh-Boyerahmad, Iran) and authenticated by the Biology Department of Razi University (Kermanshah, Iran).

3.2. rBM-MSCs Isolation and Characterization

The Wistar rats were euthanized using chloroform asphyxiation. Then, the rat bone marrow was extracted from its femurs and tibias. To obtain rBM-MSCs, the extracted bone marrow was cultured in a Dulbecco's Modified Eagle's Medium/Low Glucose (DMEM/LG) (Gibco, UK) supplemented with 15% (v/v) fetal bovine serum (FBS) (Gibco, UK), penicillin (10 U/mL)-streptomycin (10 μ g/mL) solution (Pen-Strep; Bioidea, Iran), and 2 mM L-glutamine (Sigma, Germany) at 37°C and in 5% CO₂. Then, the purified rBM-MSCs at passages 3 - 5 were used to be characterized by the flow cytometry analysis of rBM-MSC-specific positive (CD44, CD90, and CD105) and negative (CD34 and CD45) markers and differentiation assays into adipocytes and osteoblasts, according to our previously established protocol for mouse MSCs (15).

3.3. Preparation of DISWK

The internal septum was separated from the walnut kernel and mechanically broken into small fragments. To prepare an aqueous decoction of the internal septum of the walnut kernel, 20 gr of small fragments of the septum were gently boiled for 30 min in 100 mL of distilled water. Then, the aqueous decoction was passed through a filter, and the filtered solution was dried in a dark and dry place at a constant temperature of 37°C. To prepare a stock solution of DISWK (5 mg/mL), 5 mg of the DISWK powder was dissolved in 1 mL of distilled deionized water and then filtered by a 0.2- μ m filter under sterile conditions.

3.4. Cytotoxicity Assay

The cytotoxic activity of DISWK was evaluated by the MTT (3-(4, 5-dimethylthiazol-2-yl)-2, 5-diphenyltetrazolium bromide) (Sigma, Germany) reduction assay according to our previously established protocol (15). Briefly, the third passage of rBM-MSCs was treated with different concentrations of DISWK (0, 0.05, 0.1, 0.2, 0.4, 0.6, 0.8, and 1 mg/mL) for 24 and 48 h. Subsequently, the MTT assay was carried out in triplicate and repeated at least four times independently to determine the cytotoxic effect of DISWK on MSCs.

3.5. Cell Cycle Analysis by PI-Staining

Cell cycle analysis was performed by the flow cytometry of the propidium iodide (PI; Sigma, Germany)-stained rBM-MSCs after treatment with DISWK. In doing so, the

rBM-MSCs were treated with the 50 $\mu\text{g}/\text{mL}$ concentration of DISWK for 24 and 48 h. After the incubation times, the treated cells were harvested and fixed in cold 70% ethanol. Then, the fixed cells were stained by PI (50 $\mu\text{g}/\text{mL}$) for 1.5 h at 4°C. Finally, all the samples were analyzed using FAC scan flow cytometry (Becton Dickinson, Germany).

3.6. Total Antioxidant Capacity of the DISWK-treated rBM-MSCs

To determine the effect of DISWK on the total antioxidant capacity (TAC) of rBM-MSCs, the third passage cells were cultured in a serum-free Roswell Park Memorial Institute medium (RPMI 1640) (Gibco, UK) at 37°C and in 5% CO₂ for 24 h. Then, the cultured rBM-MSCs was treated with the different concentrations of DISWK (i.e., 0, 0.25, 0.5, 0.75, and 1 mg/mL) for 24 and 48 h. Next, the effect of DISWK on the rBM-MSCs was evaluated by a TAC assay kit (ZB-TAC-A48, Germany), according to the manufacturer's instructions.

3.7. Transdifferentiation of rBM-MSCs Into IPCs

The rBM-MSCs were cultured in a serum-free DMEM/high glucose (DMEM/HG) medium supplemented with nicotine amide (1 M) and β -mercaptoethanol (0.5 M) (Sigma, Germany). After 48 h, the cell culture medium was replaced with a serum-free DMEM/HG medium supplemented with nicotine amide (1 M), and then the cells were incubated for four weeks. During the transdifferentiation period, the cell culture medium was refreshed every 48 h, and the morphological changes of cells were investigated under an inverted microscope. Finally, dithizone (DTZ) staining, the microscopic observation of the islet-like cell clusters, and the expression analysis of genes involved in insulin-producing β -cell commitment were used to confirm the transdifferentiation of rBM-MSCs into IPCs.

3.8. Gene Expression Analysis

The rBM-MSCs-derived IPCs were treated with a serum-free DMEM/HG medium supplemented with 50 $\mu\text{g}/\text{mL}$ of DISWK for 24 h. After the incubation time, total RNAs were extracted from treated and untreated IPCs by an animal tissue RNA isolation kit (DenaZist, Iran). Next, cDNAs were synthesized by 1 μg of the DNase I-treated total RNAs using a reverse transcription kit (Takara, Japan). Subsequently, the expression of the target genes (i.e., *Pdx1*, *Ins1/2*, *Insr*, *Glut1*, and *Glut4*) in DISWK-treated IPCs was evaluated by quantitative real-time PCR (qRT-PCR) using SYBR® Premix Ex Taq™ (Takara, Japan) and specific primers (Table 1). The expression of target genes was normalized to β -Actin gene as an internal control. Finally, the relative expression of the studied genes in the treated and untreated IPCs was estimated by applying the $2^{-\Delta\Delta\text{CT}}$ method (16).

Table 1. Forward and Reverse Primers Used for qRT-PCR

Gene & Primer	Sequence	Product Length (bp)
<i>β-actin</i>		
Sense	5'-CACACCCGCCACCAGTTC-3'	166
Antisense	5'-GACCCATACCCACCATCACAC-3'	
<i>Pdx1</i>		
Sense	5'-GTGCCAGAGTTCAGTGCTAATCC-3'	111
Antisense	5'-ACTTCCCTGTTCAGCGTCC-3'	
<i>Ins1/2</i>		
Sense	5'-CCATCAGCAAGCAGGTCATTGTTCC-3'	195
Antisense	5'-CGACGGGACTTGGGTGTAG-3'	
<i>Insr</i>		
Sense	5'-GATGCCACCAATCCTCCGTTCCC-3'	147
Antisense	5'-GCTGTCCTCCGCTGCTCTC-3'	
<i>Glut1</i>		
Sense	5'-TACTGCTCAGTGCATCTTCATCC-3'	190
Antisense	5'-ATCTGCCGACCCCTCTTTCATC-3'	
<i>Glut4</i>		
Sense	5'-GTCTTCCTTCTATTGGCCGCTCC-3'	165
Antisense	5'-TTTGGCCCTCAGTCATCTCATC-3'	

3.9. Statistical Analysis

All the statistical analyses were performed using SPSS version 22 and One-way analysis of variance (ANOVA) and the Tukey's test. The data are presented as mean \pm SEM. Furthermore, the fold change (FC) cut off ≥ 1.5 was considered significant for the expression of the target genes. Moreover, P-value cut-offs ≤ 0.05 and ≤ 0.01 were considered significant for the MTT and TAC assays, respectively.

4. Results

4.1. Isolation and Characterization of the rBM-MSCs

The rat BM-MSCs was isolated and expanded in vitro. Figure 1 displays a bone marrow primary culture and the subcultured rBM-MSCs at different passages. The purified rBM-MSCs were characterized for the expression of MSC-positive and -negative cell surface markers by flow cytometry. The results revealed that 96.23, 71.33, 97.3, 3.12, and 1.46% of rBM-MSCs expressed CD44, CD90, CD105, CD45, and CD34, respectively (Figures 2A-E). Moreover, the differentiated rBM-MSCs in the adipogenic- and osteogenic-inducing media demonstrated the presence of lipid vacuoles (Figure 3A) and calcium deposition (Figure 3B), which are shown in red color, in the MSCs-derived adipocytes and osteoblasts, respectively.

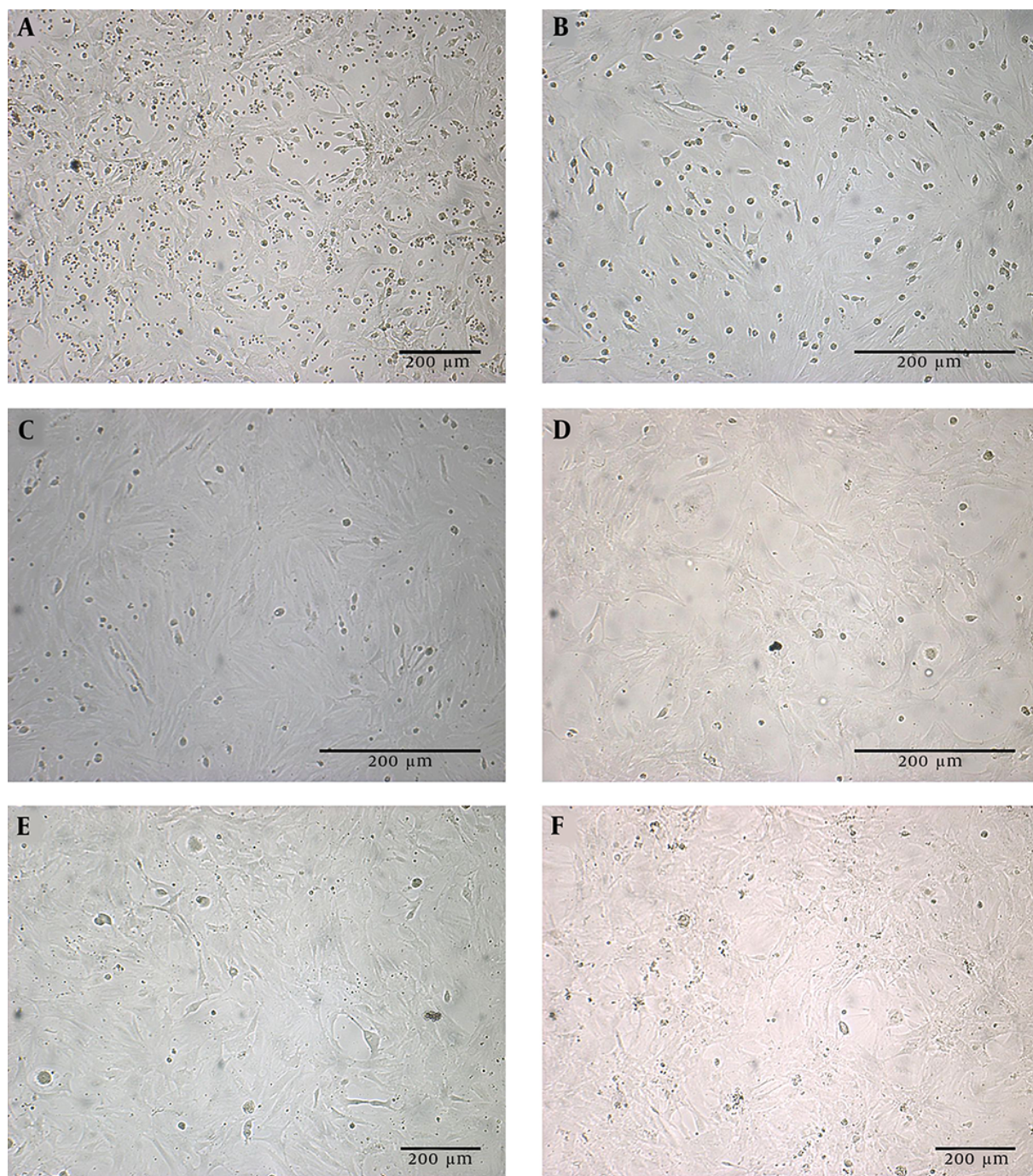


Figure 1. A bone marrow-derived primary cell culture (A) and the 1- 5 passages of rBM-MSCs (B-F)

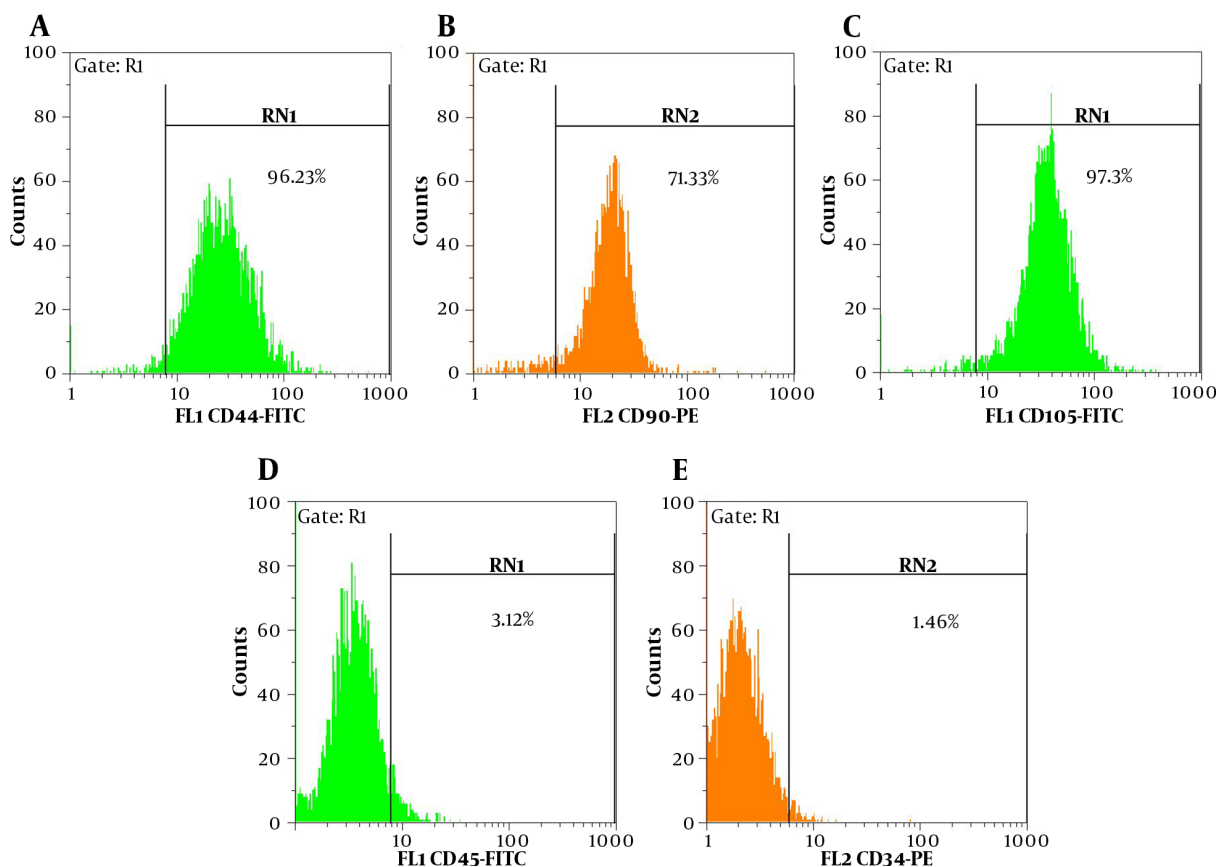


Figure 2. The immunophenotype characterization of rBM-MSCs by the flow cytometry analysis of the positive (A-C) and negative (D-E) cell surface markers

4.2. Cytotoxic Effect of DISWK on rBM-MSCs

The MTT assay results indicated that DISWK induced a distinct dose- and time-dependent reduction of rBM-MSCs viability in vitro. According to the statistical analysis of the MTT assay results, the rBM-MSCs' viability ($P \leq 0.05$) reduced significantly at concentrations > 100 and ≥ 50 $\mu\text{g}/\text{mL}$ of DISWK at 24 and 48 h after treatment, respectively (Figure 4A). Moreover, the half-maximal inhibitory concentration (IC_{50}) values of the extract on MSCs were calculated < 100 $\mu\text{g}/\text{mL}$ for both time points.

4.3. Cell Cycle Analysis of the DISWK-treated rBM-MSCs

The results of cell cycle assay showed that the Sub-G1 of the cell cycle was increased by 8.2% and 5.2% in the DISWK-treated rBM-MSCs at 24 and 48 h after treatment compared with untreated control cells, respectively. Our results also indicated that although DISWK reduced the cell cycle G1-phase (10.1%) in the rBM-MSCs at 24 h after treatment (Figure 5A), this reduction was not considerable (2.1%) at 48 h after treatment (Figure 5B), as compared with untreated

controls (Figures 5C and D). Furthermore, we found that DISWK increased the cell cycle S-phase (3.75%) in the rBM-MSCs at 24 h after treatment. Nonetheless, the cell cycle S-phase was reduced (7.7%) in the DISWK-treated rBM-MSCs at 48 h after treatment, as compared with untreated cells. Interestingly, the results revealed that the cell cycle G2 phase was reduced by 11.68% and 13.53% in the DISWK-treated rBM-MSCs compared with controls at 24 and 48 h after treatment, respectively.

4.4. Antioxidant Effect of DISWK on rBM-MSCs

The effect of different concentrations of DISWK on the total antioxidant capacity of rBM-MSCs was investigated at 24 and 48 h after treatment. Our results indicated that DISWK did not show any antioxidant activity at 24 h after treatment (Figure 4B). However, a significant ($P \leq 0.05$) TAC reduction was observed in DISWK-treated rBM-MSCs at the concentrations ≥ 25 $\mu\text{g}/\text{mL}$ of DISWK 48 h after treatment, as compared with untreated control samples.

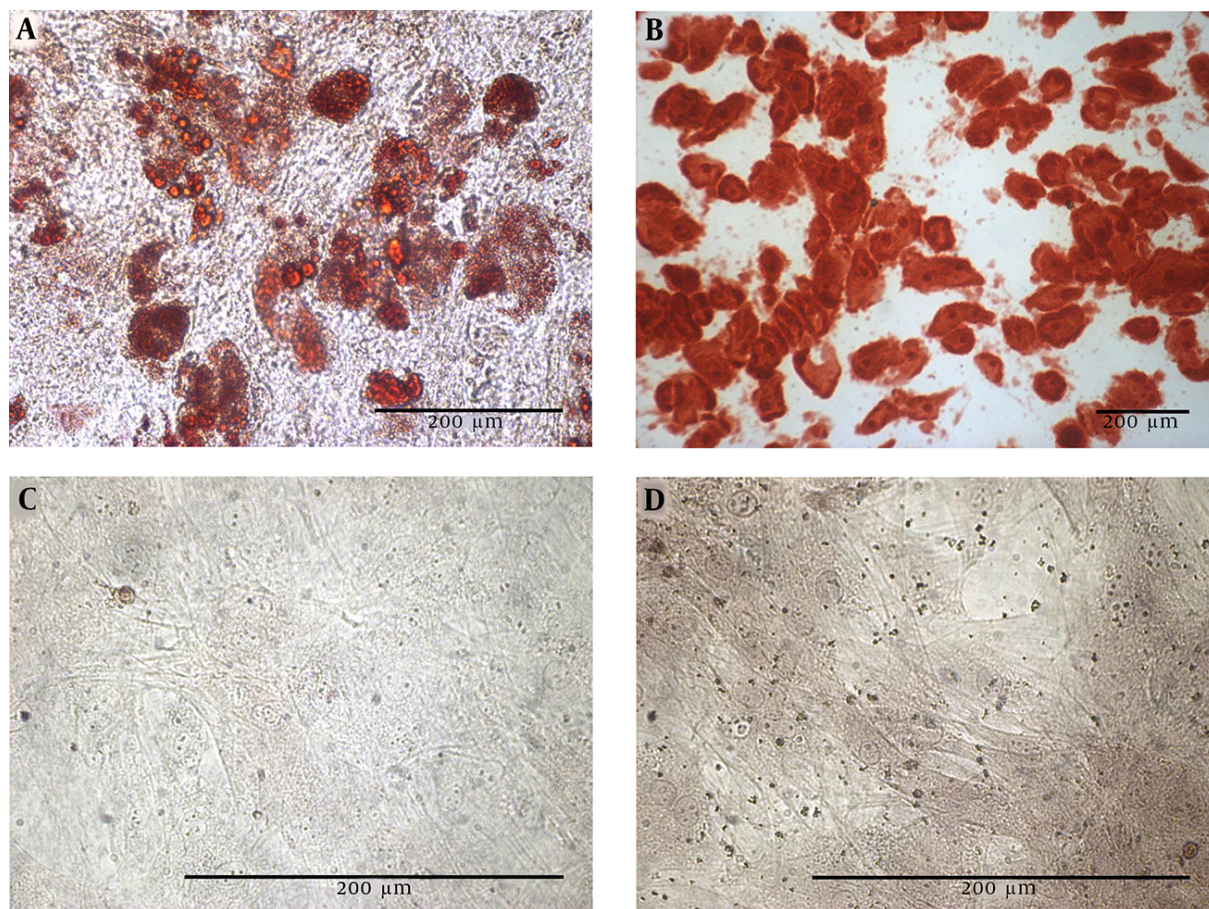


Figure 3. The adipogenic (A) and osteogenic (B) potency of rBM-MSCs, compared with undifferentiated counterparts (C, D)

4.5. Derivation of IPCs from rBM-MSCs

The cultured rBM-MSCs were treated with IPCs-induction media for 28 days. The morphological changes in rBM-MSCs and the production of islet-like clusters were started after the treatment of cells with the IPCs-induction media (Figure 6A). At the end of the transdifferentiation period, DTZ staining, which selectively stains pancreatic β -cells, followed by microscopic observations demonstrated crimson red color in islet-like cell clusters (Figure 6B). Furthermore, conventional RT-PCR demonstrated the expression of the genes involved in insulin-producing β -cell commitment and glucose uptake, including *Pdx1*, *Ins1/2*, *Insr*, *Glut1*, and *Glut4*, in the cultures containing the islet-like cell clusters (Figure 6C).

4.6. Gene Expression Changes in the DISWK-treated IPCs

The results of our qRT-PCR showed that DISWK significantly increased *Ins1/2* (2.26 fold), *Insr* (2.52 fold), and *Glut1* (4.59 fold) genes expression in the rBM-MSCs-derived IPCs

compared with untreated cells. However, it significantly reduced the expression of *Pdx1* gene (1.9 fold) in IPCs (Figure 6D). Furthermore, our results indicated that DISWK slightly, and not significantly, decreased *Glut4* gene expression (1.24 fold) in the IPCs.

5. Discussion

This is the first attempt to investigate the impact of DISWK on the survival, cell cycle, and total antioxidant capacity of rBM-MSCs. The results indicated that DISWK significantly reduced the rBM-MSCs viability in a dose- and time-dependent manner. In accordance with our results, Rusu et al. demonstrated that exposure of human lung adenocarcinoma A549 and human breast cancer T47D-KBluc cells to walnut septum extract (WSE) resulted in a dose-dependent drop in their cellular viability. However, it did not influence human breast cancer MCF-7 and normal human gingival fibroblasts (HGF) cells (17). Moreover, they

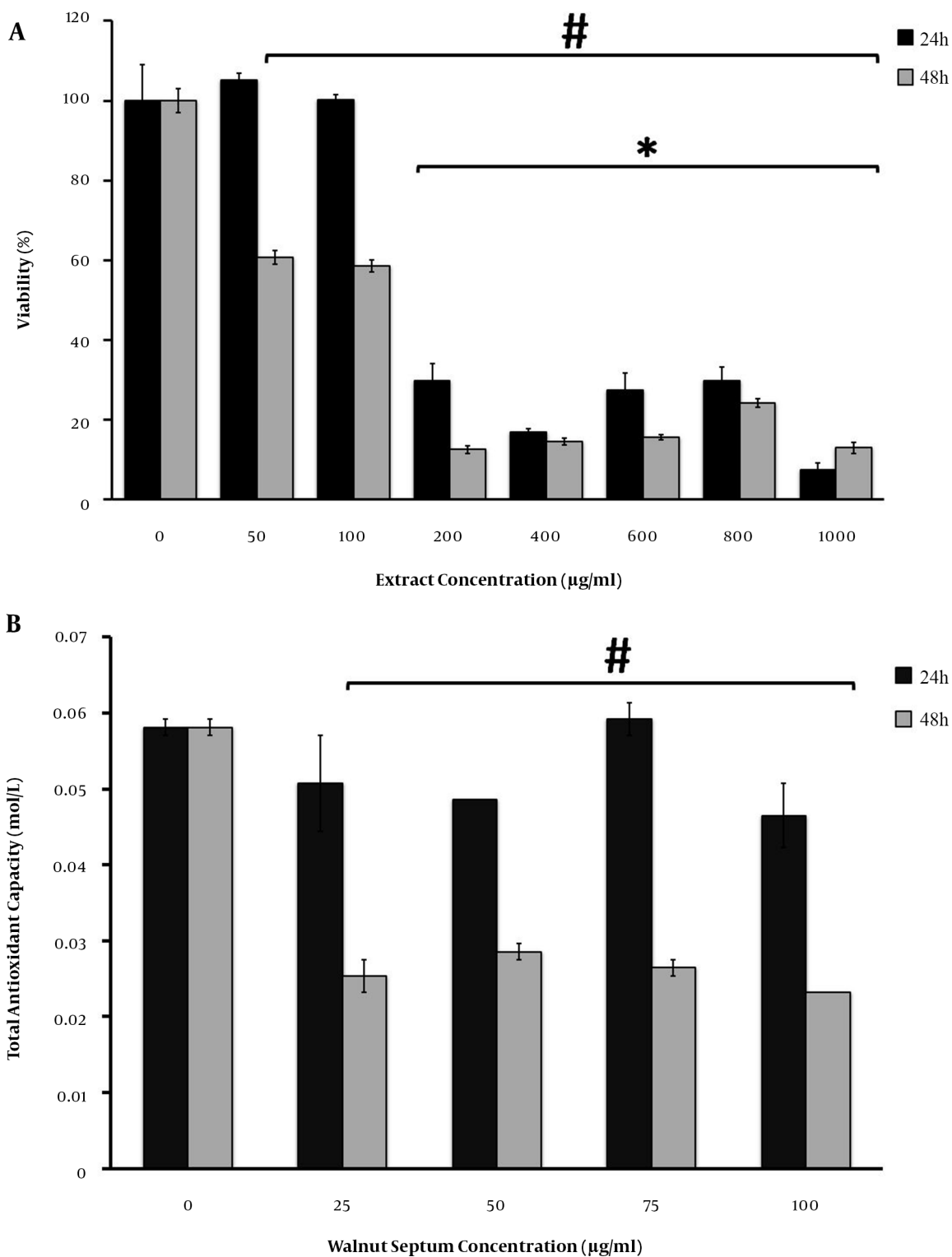


Figure 4. The effects of DISWK on the viability(A) and total antioxidant capacity(B) of the rBM-MSCs. The significant changes are shown with* and # for 24 and 48 h, respectively.

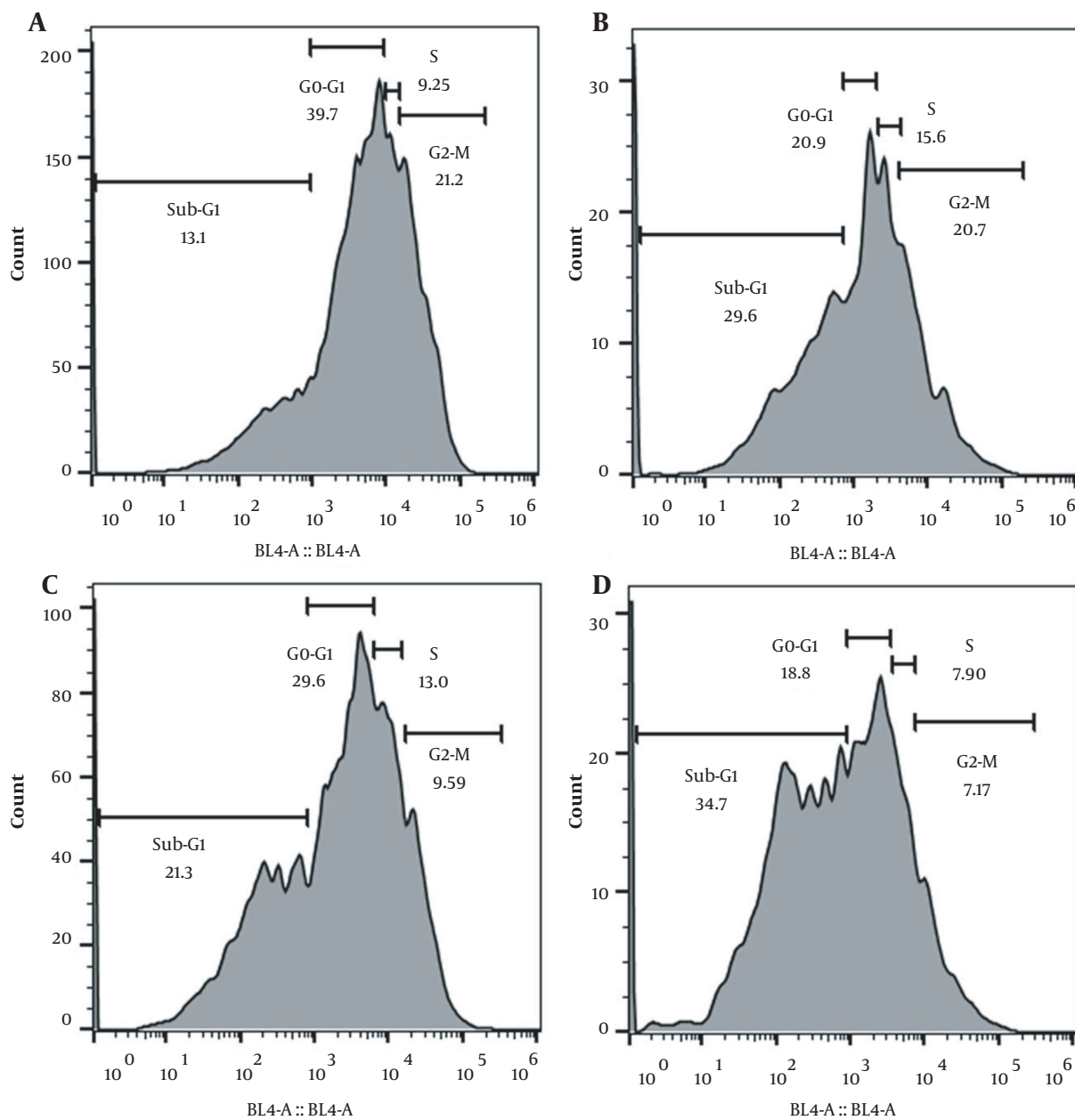


Figure 5. The cell cycle analysis of DISWK-treated rBM-MSCs at 24 (A) and 48 h (B) treatment times, compared with undifferentiated counterparts (C, D)

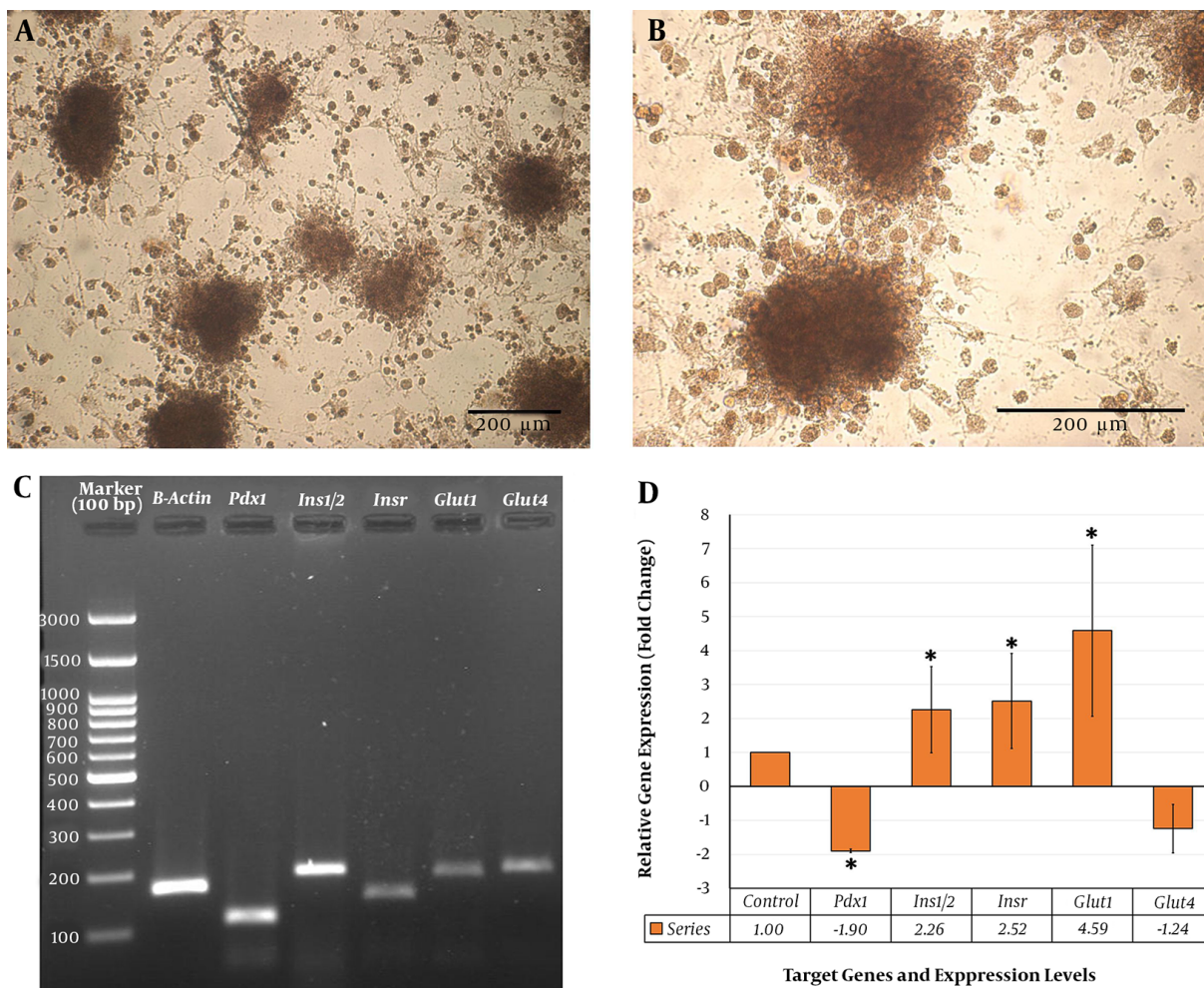


Figure 6. Transdifferentiation of rBM-MSCs into IPCs (A-B) and qRT-PCR analysis of genes involved in pancreatic β -cells differentiation and glucose uptake in the DISWK-treated rBM-MSCs (C-D). Significant gene expression changes are shown with*.

showed the antioxidant effect of WSE on all four cell types in a D-galactose-induced ageing model and naturally aged rats (17, 18).

In this regard, several phytochemical studies also demonstrated that the walnut septum is a rich source of polyphenols, including ellagitannins, catechin, epicatechin, quercetin, and gallic acid, which are introduced to be responsible for its high antioxidant property (14, 17). Despite these findings, our results indicated that DISWK reduced the TAC of rBM-MSCs 48 h after treatment. Therefore, we suggest that contrasting results may be related to the type of sample, the extraction method, the thermal inactivation of DISWK polyphenols, or the presence of antioxidant inhibitory compounds in the extract. However, further phytochemical and functional analyses are required to confirm this conclusion.

Our study also elucidated that DISWK suppressed the rBM-MSCs cell cycle, especially at S and G2 phases. In this regard, several studies also reported that WSE suppresses the proliferation of cancerous cells (17, 19, 20). Functionally, the walnut septum phenolic compounds are introduced to be responsible for its antiproliferative effects (17, 21). Therefore, we propose that DISWK may have sparingly water-soluble polyphenols (e.g., epicatechin, catechin, quercetin, syringic acid, gallic acid, protocatechuic acid, and vanillic acid) and heat-resistant bioactive constituents, which inhibit the rBM-MSCs cell cycle at the S and G2 phases. According to the previous studies and ours, we declare that although the walnut septum can be used as an antiproliferative agent against diverse cancerous cells, it also suppresses the cell cycle of normal MSCs. Therefore, we conclude that further functional investigations are warranted.

to find the exact molecular effects of the walnut septum and its constituents on the characteristics of cancerous and normal cells.

In the present study, the effect of DISWK was also evaluated on the expression of genes involved in pancreatic β -cell commitment and glucose uptake in IPCs. Growing evidence suggests that WSE can reduce blood glucose level (10-12). Although Javidanpour et al. indicated that the leaf and fruit peel of walnut increased β -cell number in the pancreas of streptozotocin-induced diabetic rats (11), Dehghani et al. reported that WSE did not have any effects on the pancreatic structure (22). In this regard, our study also exhibited significant overexpression of *Ins1/2* and *Insr* genes in the DISWK-treated IPCs. Moreover, we evaluated the expression of *Glut1* and *Glut4* genes in the DISWK-treated IPCs. GLUT1 is a uniporter that uptakes glucose in GLUT2-deficient insulin-releasing β -cells (23) and plays a role in the glucose-dependent insulin secretion by β -cells (24). It cooperatively acts with other isoforms, especially GLUT4, in insulin-sensitive tissues, including fat and muscle (25, 26). Moreover, two enhancer elements have been identified in the mouse *Glut1* gene responsive to insulin, growth factor, and oncogenes (26).

In the present study, although DISWK had no significant effect on the expression of *Glut4* gene in the DISWK-treated IPCs, it overexpressed *Glut1* in the cells. Therefore, we conclude that DISWK may induce glucose uptake through the induction of *Ins1/2*, *Insr*, and *Glut1* genes expression in IPCs. In addition, according to the previous studies and ours, we suggest that DISWK may promote *Glut1* expression through stimulating the expression of *Ins1/2* gene in IPCs; however, further functional studies are needed to confirm it.

In this study, *Pdx1* gene expression was also investigated in the DISWK-treated IPCs. PDX1 is a transcription factor required for pancreatic β -cells development and functionality (27). Our results showed that DISWK significantly reduced *Pdx1* gene expression in IPCs. Therefore, we conclude that although DISWK may induce glucose uptake through the upregulation of *Ins1/2*, *Insr*, and *Glut1* genes in IPCs, it may influence the insulin-producing β -cells characteristics by inhibiting the expression of the genes involved in pancreatic development, such as *Pdx1*. Considering the prominence of these effects, further studies should be conducted to investigate these priority areas more in-depth, especially at protein level for *Ins1/2*, *Insr*, and *Glut1* genes.

Finally, we also suggest that polysaccharides, phytochemicals, secondary metabolites like sparingly water-soluble polyphenols (i.e., phenolic acids, flavonoids, and condensed tannins), and heat-resistant constituents may be key compounds responsible for the molecular effects of DISWK on the MSCs and IPCs in this study. However, ac-

ording to the previous studies and ours, it is worth noting that the type of sample and extraction method may influence the WSE constituents' profile and effects on cells. Therefore, further phytochemical and functional analyses are desirable to find the potential effective compounds of DISWK and their possible molecular effects for improving the therapeutic applications of MSCs and IPCs in medicine.

5.1. Conclusions

In sum, our results indicated that DISWK significantly reduces the viability and TAC of rBM-MSCs and suppresses their cell cycle. Moreover, DISWK may help in glucose uptake by IPCs through the activation of *Ins1/2*, *Insr*, and *Glut1* genes expression in these cells. However, it may influence pancreatic β -cells commitment and functionality via inhibiting *Pdx1* gene expression. Altogether, the results of this study provide a good perspective for further investigations to evaluate the impact of walnut septum on MSCs and MSC-derived IPCs and to determine the potential effective compounds of DISWK and their possible molecular effects for improving their therapeutic applications in medicine and the treatment of human diseases, such as diabetes mellitus.

Acknowledgments

The authors would like to thank Ms. Niloufar Rezaei and Dr. Azam Chahardoli for their great assistance.

Footnotes

Authors' Contribution: S. S. Developed the original idea, and the protocol supervised the research and wrote the manuscript. F. A. S. K. Contributed to the development of the protocol, abstracted and analyzed data, and prepared the manuscript.

Conflict of Interests: We confirm that there are no known conflicts of interest with regard to this manuscript.

Ethical Approval: All the procedures in this study were carried out in conformity with the guidelines of the Animal Ethics Committee of Razi University (permit number 395-1-019), which complies with the National Institutes of Health (NIH) laws and policies for the care and use of laboratory animals and cells, 2011 edition.

Funding/Support: This study financially supported by Razi University, Kermanshah, Iran.

References

- Tan SY, Mei Wong JL, Sim YJ, Wong SS, Mohamed Elhassan SA, Tan SH, et al. Type 1 and 2 diabetes mellitus: A review on current treatment approach and gene therapy as potential intervention. *Diabetes Metab Syndr*. 2019;**13**(1):364-72. doi: [10.1016/j.dsx.2018.10.008](https://doi.org/10.1016/j.dsx.2018.10.008). [PubMed: [30641727](https://pubmed.ncbi.nlm.nih.gov/30641727/)].
- Lilly MA, Davis MF, Fabie JE, Terhune EB, Gallicano GI. Current stem cell based therapies in diabetes. *Am J Stem Cells*. 2016;**5**(3):87-98. [PubMed: [27853630](https://pubmed.ncbi.nlm.nih.gov/27853630/)]. [PubMed Central: [PMC5107653](https://pubmed.ncbi.nlm.nih.gov/PMC5107653/)].
- Zomer HD, Vidane AS, Goncalves NN, Ambrosio CE. Mesenchymal and induced pluripotent stem cells: general insights and clinical perspectives. *Stem Cells Cloning*. 2015;**8**:125-34. doi: [10.2147/S11552534.2015.088036](https://doi.org/10.2147/S11552534.2015.088036). [PubMed: [26451119](https://pubmed.ncbi.nlm.nih.gov/26451119/)]. [PubMed Central: [PMC4592031](https://pubmed.ncbi.nlm.nih.gov/PMC4592031/)].
- Zang L, Hao H, Liu J, Li Y, Han W, Mu Y. Mesenchymal stem cell therapy in type 2 diabetes mellitus. *Diabetol Metab Syndr*. 2017;**9**:36. doi: [10.1186/s13098-017-0233-1](https://doi.org/10.1186/s13098-017-0233-1). [PubMed: [28515792](https://pubmed.ncbi.nlm.nih.gov/28515792/)]. [PubMed Central: [PMC5433043](https://pubmed.ncbi.nlm.nih.gov/PMC5433043/)].
- Rekittke NE, Ang M, Rawat D, Khatri R, Linn T. Regenerative therapy of type 1 diabetes mellitus: From pancreatic islet transplantation to mesenchymal stem cells. *Stem Cells Int*. 2016;**2016**:3764681. doi: [10.1155/2016/3764681](https://doi.org/10.1155/2016/3764681). [PubMed: [27047547](https://pubmed.ncbi.nlm.nih.gov/27047547/)]. [PubMed Central: [PMC4800095](https://pubmed.ncbi.nlm.nih.gov/PMC4800095/)].
- Zhu Y, Liu Q, Zhou Z, Ikeda Y. PDX1, Neurogenin-3, and MAFA: critical transcription regulators for beta cell development and regeneration. *Stem Cell Res Ther*. 2017;**8**(1):240. doi: [10.1186/s13287-017-0694-z](https://doi.org/10.1186/s13287-017-0694-z). [PubMed: [29096722](https://pubmed.ncbi.nlm.nih.gov/29096722/)]. [PubMed Central: [PMC5667467](https://pubmed.ncbi.nlm.nih.gov/PMC5667467/)].
- Neshati Z, Matin MM, Bahrami AR, Moghimi A. Differentiation of mesenchymal stem cells to insulin-producing cells and their impact on type 1 diabetic rats. *J Physiol Biochem*. 2010;**66**(2):181-7. doi: [10.1007/s13105-010-0013-y](https://doi.org/10.1007/s13105-010-0013-y). [PubMed: [20422338](https://pubmed.ncbi.nlm.nih.gov/20422338/)].
- Pagliuca FW, Melton DA. How to make a functional beta-cell. *Development*. 2013;**140**(12):2472-83. doi: [10.1242/dev.093187](https://doi.org/10.1242/dev.093187). [PubMed: [23715541](https://pubmed.ncbi.nlm.nih.gov/23715541/)]. [PubMed Central: [PMC3666377](https://pubmed.ncbi.nlm.nih.gov/PMC3666377/)].
- Bose B, Sudheer PS. In vitro differentiation of pluripotent stem cells into functional beta islets under 2D and 3D culture conditions and in vivo preclinical validation of 3D islets. *Methods Mol Biol*. 2016;**1341**:257-84. doi: [10.1007/978-1-4939-230-2_10](https://doi.org/10.1007/978-1-4939-230-2_10). [PubMed: [25783769](https://pubmed.ncbi.nlm.nih.gov/25783769/)].
- Ravanbakhsh A, Mahdavi M, Jalilzade-Amin G, Javadi S, Maham M, Mohammadnejad D, et al. Acute and subchronic toxicity study of the median septum of juglans regia in wistar rats. *Adv Pharm Bull*. 2016;**6**(4):541-9. doi: [10.1517/apb.2016.067](https://doi.org/10.1517/apb.2016.067). [PubMed: [28101461](https://pubmed.ncbi.nlm.nih.gov/28101461/)]. [PubMed Central: [PMC5241412](https://pubmed.ncbi.nlm.nih.gov/PMC5241412/)].
- Javidanpour S, Fatemi Tabtabaei SR, Siahpoosh A, Morovati H, Shahriari A. Comparison of the effects of fresh leaf and peel extracts of walnut (*Juglans regia* L.) on blood glucose and beta-cells of streptozotocin-induced diabetic rats. *Vet Res Forum*. 2012;**3**(4):251-5. [PubMed: [25653767](https://pubmed.ncbi.nlm.nih.gov/25653767/)]. [PubMed Central: [PMC4313044](https://pubmed.ncbi.nlm.nih.gov/PMC4313044/)].
- Papoutsis Z, Kassi E, Chinou I, Halabalaki M, Skaltsounis LA, Moutsatsou P. Walnut extract (*Juglans regia* L.) and its component ellagic acid exhibit anti-inflammatory activity in human aorta endothelial cells and osteoblastic activity in the cell line KS483. *Br J Nutr*. 2008;**99**(4):715-22. doi: [10.1017/S0007114507837421](https://doi.org/10.1017/S0007114507837421). [PubMed: [17916277](https://pubmed.ncbi.nlm.nih.gov/17916277/)].
- Ghiravani Z, Hassanzadeh-Taheri M, Hassanzadeh-Taheri M, Hosseini M. Internal septum of walnut kernel: A neglected functional food. *Res J Pharmacog*. 2020;**7**(2):81-92. doi: [10.21217/rjp.2020.203451.1522](https://doi.org/10.21217/rjp.2020.203451.1522).
- Rusu ME, Gheldiu AM, Mocan A, Moldovan C, Popa DS, Tomuta I, et al. Process optimization for improved phenolic compounds recovery from walnut (*Juglans regia* L.) septum: Phytochemical profile and biological activities. *Molecules*. 2018;**23**(11). doi: [10.3390/molecules23112814](https://doi.org/10.3390/molecules23112814). [PubMed: [30380713](https://pubmed.ncbi.nlm.nih.gov/30380713/)]. [PubMed Central: [PMC6278542](https://pubmed.ncbi.nlm.nih.gov/PMC6278542/)].
- Sisakhtezhad S, Heidari M, Bidmeshkipour A. Eugenol enhances proliferation and migration of mouse bone marrow-derived mesenchymal stem cells in vitro. *Environ Toxicol Pharmacol*. 2018;**57**:166-74. doi: [10.1016/j.etap.2017.12.012](https://doi.org/10.1016/j.etap.2017.12.012). [PubMed: [29277003](https://pubmed.ncbi.nlm.nih.gov/29277003/)].
- Schmittgen TD, Livak KJ. Analyzing real-time PCR data by the comparative C(T) method. *Nat Protoc*. 2008;**3**(6):1101-8. doi: [10.1038/nprot.2008.73](https://doi.org/10.1038/nprot.2008.73). [PubMed: [18546601](https://pubmed.ncbi.nlm.nih.gov/18546601/)].
- Rusu ME, Fizesan I, Pop A, Mocan A, Gheldiu AM, Babota M, et al. Walnut (*Juglans regia* L.) septum: Assessment of bioactive molecules and in vitro biological effects. *Molecules*. 2020;**25**(9). doi: [10.3390/molecules25092187](https://doi.org/10.3390/molecules25092187). [PubMed: [32392837](https://pubmed.ncbi.nlm.nih.gov/32392837/)]. [PubMed Central: [PMC7248768](https://pubmed.ncbi.nlm.nih.gov/PMC7248768/)].
- Rusu ME, Georgiu C, Pop A, Mocan A, Kiss B, Vostinaru O, et al. Antioxidant effects of walnut (*Juglans regia* L.) kernel and walnut septum extract in a D-galactose-induced aging model and in naturally aged rats. *Antioxidants (Basel)*. 2020;**9**(5). doi: [10.3390/antiox9050424](https://doi.org/10.3390/antiox9050424). [PubMed: [32423149](https://pubmed.ncbi.nlm.nih.gov/32423149/)]. [PubMed Central: [PMC7278598](https://pubmed.ncbi.nlm.nih.gov/PMC7278598/)].
- Lee J, Kim YS, Lee J, Heo SC, Lee KL, Choi SW, et al. Walnut phenolic extract and its bioactive compounds suppress colon cancer cell growth by regulating colon cancer stemness. *Nutrients*. 2016;**8**(7). doi: [10.3390/nu8070439](https://doi.org/10.3390/nu8070439). [PubMed: [27455311](https://pubmed.ncbi.nlm.nih.gov/27455311/)]. [PubMed Central: [PMC4963915](https://pubmed.ncbi.nlm.nih.gov/PMC4963915/)].
- Le V, Esposito D, Grace MH, Ha D, Pham A, Bortolazzo A, et al. Cytotoxic effects of ellagitannins isolated from walnuts in human cancer cells. *Nutr Cancer*. 2014;**66**(8):1304-14. doi: [10.1080/01635581.2014.956246](https://doi.org/10.1080/01635581.2014.956246). [PubMed: [25264855](https://pubmed.ncbi.nlm.nih.gov/25264855/)].
- Carvalho M, Ferreira PJ, Mendes VS, Silva R, Pereira JA, Jeronimo C, et al. Human cancer cell antiproliferative and antioxidant activities of *Juglans regia* L. *Food Chem Toxicol*. 2010;**48**(1):441-7. doi: [10.1016/j.fct.2009.10.043](https://doi.org/10.1016/j.fct.2009.10.043). [PubMed: [19883717](https://pubmed.ncbi.nlm.nih.gov/19883717/)].
- Dehghani F, Mashhoody T, Panjehshahin M. Effect of aqueous extract of walnut septum on blood glucose and pancreatic structure in streptozotocin-induced diabetic mouse. *Iranian J Pharmacol Ther*. 2012;**11**(1):10.
- Liang Y, Cushman SM, Whitesell RR, Matschinsky FM. GLUT1 is adequate for glucose uptake in GLUT2-deficient insulin-releasing beta-cells. *Horm Metab Res*. 1997;**29**(6):255-60. doi: [10.1055/s-2007-979032](https://doi.org/10.1055/s-2007-979032). [PubMed: [9230344](https://pubmed.ncbi.nlm.nih.gov/9230344/)].
- Zhou Q, Melton DA. Pancreas regeneration. *Nature*. 2018;**557**(7705):351-8. doi: [10.1038/s41586-018-0088-0](https://doi.org/10.1038/s41586-018-0088-0). [PubMed: [29769672](https://pubmed.ncbi.nlm.nih.gov/29769672/)]. [PubMed Central: [PMC6168194](https://pubmed.ncbi.nlm.nih.gov/PMC6168194/)].
- Marette A, Richardson JM, Ramlal T, Balon TW, Vranic M, Pessin JE, et al. Abundance, localization, and insulin-induced translocation of glucose transporters in red and white muscle. *Am J Physiol*. 1992;**263**(2 Pt 1):C443-52. doi: [10.1152/ajpcell.1992.263.2.C443](https://doi.org/10.1152/ajpcell.1992.263.2.C443). [PubMed: [1514590](https://pubmed.ncbi.nlm.nih.gov/1514590/)].
- Zhao FQ, Keating AF. Functional properties and genomics of glucose transporters. *Curr Genomics*. 2007;**8**(2):113-28. doi: [10.2174/138920207780368187](https://doi.org/10.2174/138920207780368187). [PubMed: [18660845](https://pubmed.ncbi.nlm.nih.gov/18660845/)]. [PubMed Central: [PMC2435356](https://pubmed.ncbi.nlm.nih.gov/PMC2435356/)].
- D'Amour KA, Bang AG, Eliazar S, Kelly OG, Agulnick AD, Smart NG, et al. Production of pancreatic hormone-expressing endocrine cells from human embryonic stem cells. *Nat Biotechnol*. 2006;**24**(11):1392-401. doi: [10.1038/nbt1259](https://doi.org/10.1038/nbt1259). [PubMed: [17053790](https://pubmed.ncbi.nlm.nih.gov/17053790/)].