

## REVIEW ARTICLE

## Diagnosis and treatment of the Cancer Tumor Cells (CTCs); Capturing and Diagnosing Kits

Ali Alirezaie Alavijeh<sup>1</sup>, Masoomeh Dadpay<sup>2\*</sup>, Farid Barati<sup>1</sup>, Mohammad Barati<sup>3</sup>

<sup>1</sup> Department of Clinical Sciences, Faculty of Veterinary Medicine, Shahrekord University, Shahrekord, Iran

<sup>2</sup> Department of Pathology, Medical Faculty, AJA University of Medical Sciences, Tehran, Iran

<sup>3</sup> Department of Applied Chemistry, Faculty of Chemistry, University of Kashan, Kashan, Iran

### ARTICLE INFO

#### Article History:

Received 24 March 2019

Accepted 04 May 2019

Published 15 June 2019

#### Keywords:

Polymer

Cancer Cell

Capture

Diagnosis kits

Nature and Cancer

### ABSTRACT

**Objective(s):** In the developed countries, one of the leading causes of death is cancer. Cancer cells with their unique and destructive characteristics impose high costs on communities.

**Methods:** In this study, we will review the latest cancer researches and diagnostic tools.

**Results:** Existing technologies, using clinical markers and studying the polymeric screeners of cancer cells, have created kits that make cancer diagnosis at early stages. The study of the survival mechanism in malaria and honey bee and the development of bacterial engineering has created new approaches to create powerful tools for cancer detection and control.

**Conclusions:** The completion of these processes will create the potential for cancer eradication. Study of the survival mechanisms in nature and purposive modeling of it will lead to provide many solutions to solve the problems. These studies can lead to develop accurate diagnostic and therapeutic tools.

### How to cite this article

Alirezaie Alavijeh A, Dadpay M, Barati F, Barati M. Diagnosis and treatment of the Cancer Tumor Cells (CTCs); Capturing and Diagnosing Kits. *Nanomed Res J*, 2019; 4(2): 56-62. DOI: 10.22034/nmrj.2019.02.001

## INTRODUCTION

Cancer is one of the leading causes of death in the developed countries, despite the increasing advances in science. Some of the most important limiting factors in the treatment of this disease include lack of access to the tumor, the risk of critical organs surgery, and cancer spreading to other parts of the body. Nowadays, concurrent treatments are used to manage cancer. When a therapist provides two different methods for treatment of two patients (and no more) in the same time, a concurrent treatment is in progress. The therapist should be in the supervising and performing room all minutes provided to patients [1]. The new studies on cancer and its diagnostic tools are reviewed in this study. Characteristics of Cancer Cells include generating growth signals, inactivation of growth inhibitory signals, cell death resistance, Arteriogenesis, and

invasion. Also, energy management and escaping from the immune system are considered as other characteristics of cancer cells. Cancer cells consume glucose and generate lactic acid and citric acid under anaerobic conditions [2].

The cancerous cells spread throughout the body are able to diagnose and assess the stage of the disease [3, 4]. These cells provide valuable information for treating the patient. The ratio of cancer cells to circulating tumor cells (CTCs) is 1 to 10 [5], therefore separation, maintenance and cultivation are challenging for therapeutic strategies [6, 7]. The migration of 0.01% of cancer cells to other organs produces secondary tumors [7, 8]. These are circulating tumor cells (CTCs) and have  $10^7$ – $10^9$  WBCs per 1 mL of blood [6]. Hence, high precision is needed for their identification and separation.

\* Corresponding Author Email: [mdadpey1@yahoo.com](mailto:mdadpey1@yahoo.com)

**THE DIFFERENCE BETWEEN NORMAL AND CANCER CELLS**

One of the first signs of cancer can be found in the serum of patients and is caused by immune cells. The immune system produces specific, stable and identifiable antibodies for the antigens related to each tumor that lead to detect the disease in its early stages [9-11]. This method can be used to identify colorectal cancer in the early stages. Bowel or colon cancer also is known as colorectal cancer (CRC) and occurs when the development of cancer is from rectum or colon. The annually 700,000 deaths shows that the CRC is a common cancer [12]. Change in the bowel movements, continuous feeling tired, blood in the stool, and weight lost are the symptoms and signs of CRC. This method has been used for breast cancer [13], liver [14], lung [15] and stomach, successfully [16]. The size of cancer cells in the blood is different from others. According to this property, micrographers are developed to isolate and mark the cancer cells (Fig. 1) [5, 17, 18].

**MARKERS USED IN KITS FOR CANCER DIAGNOSIS**

The cancer developed from esophagus is esophageal cancer. Weight lost and difficulty in swallowing are two common symptoms of this cancer. However, it can cause hoarse voice, dry cough, enlargement of lymph nodes around

the collarbone, and coughing up or vomiting blood in the patients. This cancer is diagnosed using salivary specimens and miR-10b, miR-144, miR-21 and miR-451 markers [20]. Also, serum, milk and urine specimens can be used to diagnose breast [21], prostate [22], bladder [23] and stomach cancers [15, 24, 25]. The markers used to diagnose these cancers include TGF-β, PSA, Exosome size, and autoantibodies, respectively.

**DIAGNOSTIC KITS FOR CANCER**

Various companies have begun to develop diagnostic-economic kits based on various markers around the world, which are listed in the following table (table1) [26]. Depending on the type of test used for liquid-based cytology (LBC), the conventional cytology (CC) can be replaced with LBC as primary test method [27]. Considering cost-effectiveness, it is necessary to know whether other LBC systems are more desirable [28]. Seegene and BioSewoom are two famous companies that first one main concentration is on diagnosing infectious disease and the second one predominantly produces molecular diagnostic kits for cell blood cancer. The annual average growth rate of diagnostic kits for cancer in next generation is 42.6% that initiate from \$1.8 billion in 2014 which sharply escalates to \$10.629 billion in 2019 [29].

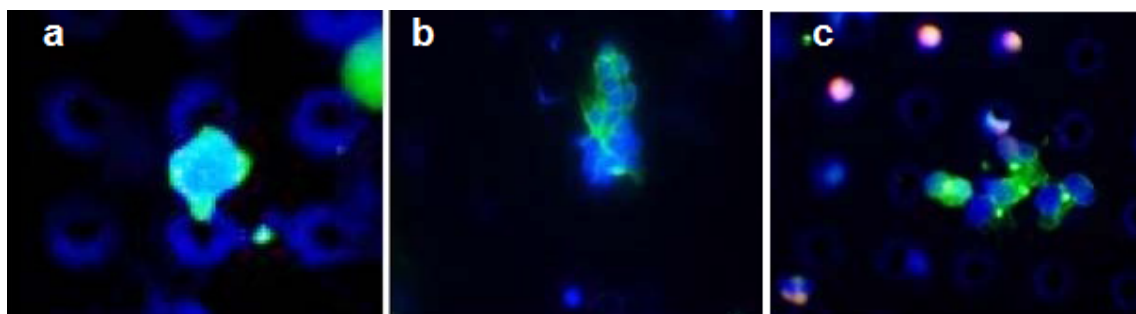


Fig. 1. Different size of cancer cells; (a) Breast cancer, (b) Lung cancer, (c) Prostate cancer [19]

Table 1: Some useful biomarkers for diagnosing cancer in manufacturing kits[26].

Company	Cancer	Cancer marker	Test time	Specimen
Biotech	prostate	PSA <sup>1</sup>	15 minutes	Whole blood, serum or plasma
Vita	cervix	OncoE6	2.5 hours	Swab of cervix
Biotech (IP)	Liver	AFP <sup>2</sup>	10 minutes	Whole blood, serum or plasma
Cortez	Breast - Lung	CEA <sup>3</sup>	10 minutes	Serum or plasma

<sup>1</sup> Prostate-specific antigen (PSA)  
<sup>2</sup> Alpha fetoprotein  
<sup>3</sup> Carcinoid embryonic antigen

### THE DIAGNOSTIC PERFORMANCE MECHANISM OF KITS

Plastic strips are used to perform cancer diagnostic tests, these strips consist of the following parts: 1. Place of specimen with marker; 2. Antibody –binding pad; 3- Antibody diagnose line; 4- Control identification line (To evaluate the performance of the test). In the diagnostic test process, the specimen is placed along the strip in two test lines to evaluate the result and in the control line for the accuracy of the test performance. In the first step, the antibodies available at this stage will reveal cancer markers if present and the accuracy of the test will be displaced with a line created from the binding of the antibodies available at the beginning of the strip and its markers in the control line location [30].

### USE OF POLYMER IN DIAGNOSIS AND ISOLATION OF CANCER CELLS

Some of the most important applications used in the medical field includes screening, polymer coating and marking in solutions [31-33]. Parylene polymers [5, 34, 35], polyurethane methacrylate [36], filters Poly (dimethylsiloxane) (PDMS) [37] have been used for separation of circulating cancer cells from the body. Microfilters are designed using these polymer structures to trap cancer cells based on their physical characteristics (Fig. 2). Polymers coating is their second approach to cope with cancer, which polymeric binding polymers [38, 39] and PEG [32] are used to achieve this purpose. Therefore, nanoparticles are combined with these polymers for cancer cells marking. The third group

of polymers refers to polymers that prevent the movement of the circulating cancer cells by binding them. For example, alginate polymers, dendrimers [33] and 3-Mercaptopropyltrimethoxysilane can be mentioned in this regard [40].

### MODELING AND USING NATURE TO DIAGNOSE AND TREAT CANCER

#### *Malaria and Marking Cancer Cells*

Malaria as an important infectious disease is considered as an important cause of death, annually. It is an infectious disease affecting humans and animals that is borne by a mosquito. This disease is caused by a parasitic single-celled microorganisms belonging to the Plasmodium group [41]. Three of the species of plasmodium falciparum, it is known as the leading cause of death [42, 43]. Malaria is multiplied in the body using liver cells and red blood cells [44-46]. Epithelial surface molecules are used to identify and trap circulating cancer cells due to the different sizes of cancer cells. Marking and screening of the cancer cells with the mesenchymal origin due to its small amount of the molecules is associated with deficiencies [47-49]. Hence, specific proteins are needed to identify cancer cells that these proteins are not found in normal cells.

Chondroitin sulfate (CS) is composed of similar units of disaccharide modified with sulfate groups. This molecule is expressed on the cancer cells surface, the placenta and the epithelial and mesenchymal origin cells. Chondroitin sulfate is able to bind to 30 different proteoglycans, that are expressed on the surface of tumor cells in the primary stages and metastases [50, 51]. The

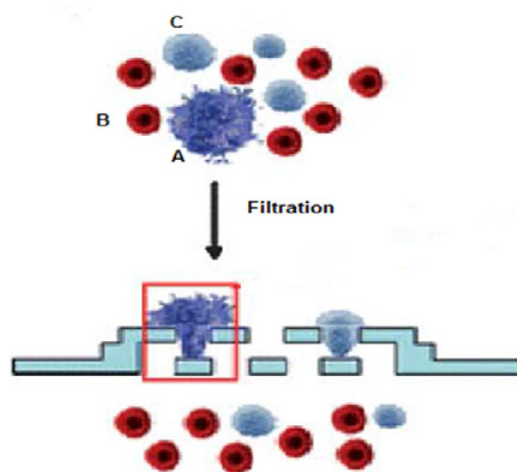


Fig. 2. Screening of Cancer Cells by Polymers; A) Cancer Cells, B) Red Cells, and C) White Blood.

VAR2CSA protein of the malaria parasite has a good ability to identify the Chondroitin sulfate in target cells [26]. Therefore, the recombinant of CS-binding VAR2CSA protein (rVAR2) is able to trap cancer cells of the prostate, lung, liver and pancreas with minimal contamination of other blood cells [52].

#### *Anti-tumor effect of bee venom*

Bee venom has a chemical composition with different compounds such as melittin. Melittin is an antitumor peptide composed of 26 amino acids [53-56]. The antitumor effect of this peptide on prostate, breast, lung and liver cancers has been confirmed in previous studies. This substance causes the death of cancer cells by activating *metalloproteinase-2*, caspase and phospholipase A2 [55, 57-59]. Other reported effects of bee venom on cancer cells include apoptosis, growth suppression [60] and angiogenesis. Chemotherapy complications can be improved with combining this substance with chemotherapy drugs which leads to increase therapeutic effect and reduce doses [56].

#### *Cancer diagnose and bacterial cancer therapy*

As the relationship between bacteria and cancer (H. pylori and pancreatic Cancer) is being studied and the results are published [61], bacteria are used for treatment of a variety of diseases, such as cancer [62-64], by carrying nucleic acid to host [65]. *Salmonella typhimurium* and *Listeria monocytogenes* are two bacterial species used in cancer management [66, 67]. *Typhimurium* bacteria copes with cancer cell disease by disturbing the metabolic process of cancer cells [68, 69] and *Listeria monocytogenes* bacteria by reducing the growth of cancer cells by removing Interleukins (ILs) factors [66, 67]. Another application of the bacteria is their abilities to act as diagnostic sensors in the body [70], so that, the simultaneous growth of some of these bacteria are used to diagnose cancer [71].

#### **TUMOR-ON-A-CHIP PLATFORMS**

Tumor-on-a-chip devices have been developed to investigate the efficiency of treatments on cancer patients. These devices can be strongly helpful for development of cancer treatment methods [72]. They are able to show the metastatic properties of cancer tumors. Tumor-on-a-chip devices have a great potential in development of drug delivery systems based on nanoparticles (NPs).

The drug delivery based on nanotechnology has advantages such as higher drug specificity, higher water solubility, and higher therapeutic efficiency compare to conventional cancer treatment methods. Furthermore, no drug resistance occurs through treatment duration because of direct delivery of anticancer drug to the tumor [73, 74].

#### **CONCLUSION AND VISION**

Circulating cancer cells have disrupted the cancer treatment process. Therefore, this disease with high mortality can be managed by creating higher-sensitivity identification and treatment processes. Engineering and modeling of natural conditions for diseases initial diagnosis as well as the treatment of them, particularly cancers, can lead to introduce new technologies in the diagnosis and treatment fields. Study of the survival mechanisms in nature and purposive modeling of it will lead to provide many solutions to solve the problems. As mentioned earlier, the study of the survival mechanism in malaria, honeybee and engineering bacteria can introduce different approaches to diagnose cancer. These studies can lead to develop accurate diagnostic and therapeutic tools.

#### **CONFLICT OF INTEREST**

The authors declare that there are no conflicts of interest regarding the publication of this manuscript.

#### **REFERENCES**

1. Rex DK, Kahi CJ, Levin B, Smith RA, Bond JH, Brooks D, et al. Guidelines for Colonoscopy Surveillance after Cancer Resection: A Consensus Update by the American Cancer Society and US Multi-Society Task Force on Colorectal Cancer. *CA: A Cancer Journal for Clinicians*. 2006;56(3):160-7.
2. Garzon R, Marcucci G, Croce CM. Targeting microRNAs in cancer: rationale, strategies and challenges. *Nature Reviews Drug Discovery*. 2010;9(10):775-89.
3. Cristofanilli M, Budd GT, Ellis MJ, Stopeck A, Matera J, Miller MC, et al. Circulating Tumor Cells, Disease Progression, and Survival in Metastatic Breast Cancer. *New England Journal of Medicine*. 2004;351(8):781-91.
4. Harouaka RA, Zhou M-D, Yeh Y-T, Khan WJ, Das A, Liu X, Christ CC, Dicker DT, Baney TS, Kaifi JT. Flexible micro spring array device for high-throughput enrichment of viable circulating tumor cells. *Clinical chemistry*, 2014;60 (2):323-333.
5. Lin HK, Zheng S, Williams AJ, Balic M, Groshen S, Scher HI, et al. Portable Filter-Based Microdevice for Detection and Characterization of Circulating Tumor Cells. *Clinical Cancer Research*. 2010;16(20):5011-8.
6. Song Y, Huang Y-Y, Liu X, Zhang X, Ferrari M, Qin L. Point-of-care technologies for molecular diagnostics using a

- drop of blood. *Trends in Biotechnology*. 2014;32(3):132-9.
7. Yu L, Ng SR, Xu Y, Dong H, Wang YJ, Li CM. Advances of lab-on-a-chip in isolation, detection and post-processing of circulating tumour cells. *Lab on a Chip*. 2013;13(16):3163.
  8. Yu M, Stott S, Toner M, Maheswaran S, Haber DA. Circulating tumor cells: approaches to isolation and characterization. *The Journal of Cell Biology*. 2011;192(3):373-82.
  9. Hanahan D, Weinberg Robert A. Hallmarks of Cancer: The Next Generation. *Cell*. 2011;144(5):646-74.
  10. Orimo A, Weinberg RA. Stromal Fibroblasts in Cancer: A Novel Tumor-Promoting Cell Type. *Cell Cycle*. 2006;5(15):1597-601.
  11. Kalluri R, Zeisberg M. Fibroblasts in cancer. *Nature Reviews Cancer*. 2006;6(5):392-401.
  12. Duda DG, Duyverman AMM, Kohno M, Snuderl M, Steller EJA, Fukumura D, et al. Malignant cells facilitate lung metastasis by bringing their own soil. *Proceedings of the National Academy of Sciences*. 2010;107(50):21677-82.
  13. Quail DF, Joyce JA. Microenvironmental regulation of tumor progression and metastasis. *Nature Medicine*. 2013;19(11):1423-37.
  14. Nagaraj S, Gabrilovich DI. Myeloid-Derived Suppressor Cells in Human Cancer. *The Cancer Journal*. 2010;16(4):348-53.
  15. Chapman CJ, Murray A, McElveen JE, Sahin U, Luxemburger U, Tureci O, et al. Autoantibodies in lung cancer: possibilities for early detection and subsequent cure. *Thorax*. 2008;63(3):228-33.
  16. Drews-Elger K, Iorns E, Dias A, Miller P, Ward TM, Dean S, et al. Infiltrating S100A8+ myeloid cells promote metastatic spread of human breast cancer and predict poor clinical outcome. *Breast Cancer Research and Treatment*. 2014;148(1):41-59.
  17. Fleischer RL. Cancer filter deja vu. *Science*. 2007;318(5858):1864-1864.
  18. Vona G, Sabile A, Louha M, Sitruk V, Romana S, Schütze K, Capron F, Franco D, Pazzagli M, Vekemans M. Isolation by size of epithelial tumor cells: a new method for the immunomorphological and molecular characterization of circulating tumor cells. *The American journal of pathology*. 2000;156(1):57-63.
  19. Agarwal A, Balic M, El-Ashry D, Cote RJ. Circulating tumor cells: strategies for capture, analyses, and propagation. *The Cancer Journal*. 2018;24(2):70-77.
  20. Xie Z, Chen G, Zhang X, Li D, Huang J, Yang C, et al. Salivary MicroRNAs as Promising Biomarkers for Detection of Esophageal Cancer. *PLoS ONE*. 2013;8(4):e57502.
  21. Arcaro KE, Browne EP, Qin W, Zhang K, Anderton DL, Sauter ER. Differential Expression of Cancer-Related Proteins in Paired Breast Milk Samples from Women with Breast Cancer. *Journal of Human Lactation*. 2012;28(4):543-6.
  22. Uludag Y, Narter F, Sağlam E, Köktürk G, Gök MY, Akgün M, et al. An integrated lab-on-a-chip-based electrochemical biosensor for rapid and sensitive detection of cancer biomarkers. *Analytical and Bioanalytical Chemistry*. 2016;408(27):7775-83.
  23. Liang L-G, Kong M-Q, Zhou S, Sheng Y-F, Wang P, Yu T, et al. An integrated double-filtration microfluidic device for isolation, enrichment and quantification of urinary extracellular vesicles for detection of bladder cancer. *Scientific Reports*. 2017;7(1).
  24. Liu W, Wang P, Li Z, Xu W, Dai L, Wang K, et al. Evaluation of Tumour-Associated Antigen (TAA) Miniarray in Immunodiagnosis of Colon Cancer. *Scandinavian Journal of Immunology*. 2009;69(1):57-63.
  25. Zaenker P, Ziman MR. Serologic Autoantibodies as Diagnostic Cancer Biomarkers--A Review. *Cancer Epidemiology Biomarkers & Prevention*. 2013;22(12):2161-81.
  26. Sharma S, Zapatero-Rodríguez J, Estrela P, O'Kennedy R. Point-of-Care Diagnostics in Low Resource Settings: Present Status and Future Role of Microfluidics. *Biosensors*. 2015;5(3):577-601.
  27. Rozemeijer K, Penning C, Siebers AG, Naber SK, Matthijse SM, van Ballegooijen M, et al. Comparing SurePath, ThinPrep, and conventional cytology as primary test method: SurePath is associated with increased CIN II+ detection rates. *Cancer Causes & Control*. 2015;27(1):15-25.
  28. de Bekker-Grob EW, de Kok IMCM, Bulten J, van Rosmalen J, Vedder JEM, Arbyn M, et al. Liquid-based cervical cytology using ThinPrep technology: weighing the pros and cons in a cost-effectiveness analysis. *Cancer Causes & Control*. 2012;23(8):1323-31.
  29. Seo JH, Lee JW, Cho D. The market trend analysis and prospects of cancer molecular diagnostics kits. *Biomaterials Research*. 2018;22(1).
  30. Hayes B, Murphy C, Crawley A, O'Kennedy R. Developments in Point-of-Care Diagnostic Technology for Cancer Detection. *Diagnostics*. 2018;8(2):39.
  31. Balasubramanian S, Kagan D, Jack Hu C-M, Campuzano S, Lobo-Castañón MJ, Lim N, et al. Micromachine-Enabled Capture and Isolation of Cancer Cells in Complex Media. *Angewandte Chemie*. 2011;123(18):4247-50.
  32. Galanzha EI, Shashkov EV, Kelly T, Kim J-W, Yang L, Zharov VP. In vivo magnetic enrichment and multiplex photoacoustic detection of circulating tumour cells. *Nature Nanotechnology*. 2009;4(12):855-60.
  33. Myung JH, Gajjar KA, Saric J, Eddington DT, Hong S. Dendrimer-Mediated Multivalent Binding for the Enhanced Capture of Tumor Cells. *Angewandte Chemie International Edition*. 2011;50(49):11769-72.
  34. Zheng S, Lin HK, Lu B, Williams A, Datar R, Cote RJ, et al. 3D microfilter device for viable circulating tumor cell (CTC) enrichment from blood. *Biomedical Microdevices*. 2010;13(1):203-13.
  35. Zheng S, Lin H, Liu J-Q, Balic M, Datar R, Cote RJ, et al. Membrane microfilter device for selective capture, electrolysis and genomic analysis of human circulating tumor cells. *Journal of Chromatography A*. 2007;1162(2):154-61.
  36. Kuo JS, Zhao Y, Schiro PG, Ng L, Lim DSW, Shelby JP, et al. Deformability considerations in filtration of biological cells. *Lab on a Chip*. 2010;10(7):837.
  37. Tan SJ, Yobas L, Lee GYH, Ong CN, Lim CT. Microdevice for the isolation and enumeration of cancer cells from blood. *Biomedical Microdevices*. 2009;11(4):883-92.
  38. Galanzha EI, Kim J-W, Zharov VP. Nanotechnology-based molecular photoacoustic and photothermal flow cytometry platform for in-vivo detection and killing of circulating cancer stem cells. *Journal of Biophotonics*. 2009;2(12):725-35.



39. He W, Wang H, Hartmann LC, Cheng JX, Low PS. In vivo quantitation of rare circulating tumor cells by multiphoton intravital flow cytometry. *Proceedings of the National Academy of Sciences*. 2007;104(28):11760-5.
40. Stott SL, Hsu C-H, Tsukrov DI, Yu M, Miyamoto DT, Waltman BA, Rothenberg SM, Shah AM, Smas ME, Korir GK. Isolation of circulating tumor cells using a microvortex-generating herringbone-chip. *Proceedings of the National Academy of Sciences*, 2010;107(43):18392-18397.
41. Dinko B, Pradel G. Immune evasion by *Plasmodium falciparum* parasites: converting a host protection mechanism for the parasite's benefit. *Advances in Infectious Diseases*. 2016;06(02):82-95.
42. Mendis K, Rietveld A, Warsame M, Bosman A, Greenwood B, Wernsdorfer WH. From malaria control to eradication: The WHO perspective. *Tropical Medicine & International Health*. 2009;14(7):802-9.
43. Deitsch KW, Hviid L. Variant surface antigens, virulence genes and the pathogenesis of malaria. *Trends in Parasitology*. 2004;20(12):562-6.
44. Cirimotich CM, Dong Y, Garver LS, Sim S, Dimopoulos G. Mosquito immune defenses against *Plasmodium* infection. *Developmental & Comparative Immunology*. 2010;34(4):387-95.
45. Smith RC, Vega-Rodríguez J, Jacobs-Lorena M. The *Plasmodium* bottleneck: malaria parasite losses in the mosquito vector. *Memórias do Instituto Oswaldo Cruz*. 2014;109(5):644-61.
46. Cowman AF, Crabb BS. Invasion of Red Blood Cells by Malaria Parasites. *Cell*. 2006;124(4):755-66.
47. Santisteban M, Reiman JM, Asiedu MK, Behrens MD, Nassar A, Kalli KR, et al. Immune-Induced Epithelial to Mesenchymal Transition In vivo Generates Breast Cancer Stem Cells. *Cancer Research*. 2009;69(7):2887-95.
48. Gorges TM, Tinhofer I, Drosch M, Röse L, Zollner TM, Krahn T, et al. Circulating tumour cells escape from EpCAM-based detection due to epithelial-to-mesenchymal transition. *BMC Cancer*. 2012;12(1).
49. Hyun K-A, Koo G-B, Han H, Sohn J, Choi W, Kim S-I, et al. Epithelial-to-mesenchymal transition leads to loss of EpCAM and different physical properties in circulating tumor cells from metastatic breast cancer. *Oncotarget*. 2016;7(17).
50. Salanti A, Clausen TM, Agerbæk MØ, Al Nakouzi N, Dahlbäck M, Oo HZ, Lee S, Gustavsson T, Rich JR, Hedberg BJ. Targeting human cancer by a glycosaminoglycan binding malaria protein. *Cancer cell*, 2015;28(4):500-514.
51. Pereira MA, Clausen TM, Pehrson C, Mao Y, Resende M, Daugaard M, Kristensen AR, Spliid C, Mathiesen L, Knudsen LE. Placental sequestration of *Plasmodium falciparum* malaria parasites is mediated by the interaction between VAR2CSA and chondroitin sulfate A on syndecan-1. *PLoS pathogens*, 2016;12(8):e1005831.
52. Agerbæk MØ, Bang-Christensen SR, Yang M-H, Clausen TM, Pereira MA, Sharma S, Ditlev SB, Nielsen MA, Choudhary S, Gustavsson T. The VAR2CSA malaria protein efficiently retrieves circulating tumor cells in an EpCAM-independent manner. *Nature communications*, 2018;9(1):3279.
53. Jo M, Park MH, Kollipara PS, An BJ, Song HS, Han SB, et al. Anti-cancer effect of bee venom toxin and melittin in ovarian cancer cells through induction of death receptors and inhibition of JAK2/STAT3 pathway. *Toxicology and Applied Pharmacology*. 2012;258(1):72-81.
54. Terra RMS, Guimarães JA, Verli H. Structural and functional behavior of biologically active monomeric melittin. *Journal of Molecular Graphics and Modelling*. 2007;25(6):767-72.
55. Oršolić N. Bee venom in cancer therapy. *Cancer and Metastasis Reviews*. 2011;31(1-2):173-94.
56. Gajski G, Garaj-Vrhovac V. Melittin: A lytic peptide with anticancer properties. *Environmental Toxicology and Pharmacology*. 2013;36(2):697-705.
57. Dempsey CE. The actions of melittin on membranes. *Biochimica et Biophysica Acta (BBA) - Reviews on Biomembranes*. 1990;1031(2):143-61.
58. Leuschner C, Hansel W. Membrane Disrupting Lytic Peptides for Cancer Treatments. *Current Pharmaceutical Design*. 2004;10(19):2299-310.
59. Cho H-J, Jeong Y-J, Park K-K, Park Y-Y, Chung I-K, Lee K-G, et al. Bee venom suppresses PMA-mediated MMP-9 gene activation via JNK/p38 and NF-κB-dependent mechanisms. *Journal of Ethnopharmacology*. 2010;127(3):662-8.
60. Liu S, Yu M, He Y, Xiao L, Wang F, Song C, et al. Melittin prevents liver cancer cell metastasis through inhibition of the Rac1-dependent pathway. *Hepatology*. 2008;47(6):1964-73.
61. Schulte A, Pandeya N, Fawcett J, Fritschi L, Risch HA, Webb PM, et al. Association between *Helicobacter pylori* and pancreatic cancer risk: a meta-analysis. *Cancer Causes & Control*. 2015;26(7):1027-35.
62. Zheng JH, Nguyen VH, Jiang S-N, Park S-H, Tan W, Hong SH, Shin MG, Chung I-J, Hong Y, Bom H-S. Two-step enhanced cancer immunotherapy with engineered *Salmonella typhimurium* secreting heterologous flagellin. *Science translational medicine*, 2017;9(376):eaak9537.
63. Ryan RM, Green J, Williams PJ, Tazzyman S, Hunt S, Harmey JH, et al. Bacterial delivery of a novel cytolysin to hypoxic areas of solid tumors. *Gene Therapy*. 2009;16(3):329-39.
64. Din MO, Danino T, Prindle A, Skalak M, Selimkhanov J, Allen K, et al. Synchronized cycles of bacterial lysis for in vivo delivery. *Nature*. 2016;536(7614):81-5.
65. Xiang S, Fruehauf J, Li CJ. Short hairpin RNA-expressing bacteria elicit RNA interference in mammals. *Nature Biotechnology*. 2006;24(6):697-702.
66. Brockstedt DG, Giedlin MA, Leong ML, Bahjat KS, Gao Y, Luckett W, et al. *Listeria*-based cancer vaccines that segregate immunogenicity from toxicity. *Proceedings of the National Academy of Sciences*. 2004;101(38):13832-7.
67. Wallecha A, Maciag PC, Rivera S, Paterson Y, Shahabi V. Construction and Characterization of an Attenuated *Listeria monocytogenes* Strain for Clinical Use in Cancer Immunotherapy. *Clinical and Vaccine Immunology*. 2008;16(1):96-103.
68. Saltzman DA, Heise CP, Hasz DE, Zebede M, Kelly SM, Curtiss R, et al. Attenuated *Salmonella typhimurium* Containing Interleukin-2 Decreases MC-38 Hepatic Metastases: A Novel Anti-tumor Agent. *Cancer Biotherapy and Radiopharmaceuticals*. 1996;11(2):145-53.

69. Curtiss R, Kelly SM. Salmonella typhimurium deletion mutants lacking adenylate cyclase and cyclic AMP receptor protein are avirulent and immunogenic. *Infection and Immunity*. 1987;55 (12):3035-3043.
70. Riglar DT, Silver PA. Engineering bacteria for diagnostic and therapeutic applications. *Nature Reviews Microbiology*. 2018;16(4):214-25.
71. Panteli JT, Forkus BA, Van Dessel N, Forbes NS. Genetically modified bacteria as a tool to detect microscopic solid tumor masses with triggered release of a recombinant biomarker. *Integrative Biology*. 2015;7(4):423-34.
72. Caballero D, Kaushik S, Correlo VM, Oliveira JM, Reis RL, Kundu SC. Organ-on-chip models of cancer metastasis for future personalized medicine: From chip to the patient. *Biomaterials*. 2017;149:98-115.
73. Asghar W, El Assal R, Shafiee H, Pitteri S, Paulmurugan R, Demirci U. Engineering cancer microenvironments for in vitro 3-D tumor models. *Materials Today*. 2015;18(10):539-53.
74. Couvreur P. Nanoparticles in drug delivery: Past, present and future. *Advanced Drug Delivery Reviews*. 2013;65(1):21-3.