


[doi:10.34172/icnj.2021.28](https://doi.org/10.34172/icnj.2021.28)

Machine Learning-Based Clinical Adjusted Selection of Predicting Risk Factors for Shunt Infection in Children

Ehsan Moradi^{1*}, Malihe Sabeti², Nasrin Shahbazi², Zohreh Habibi³, Farideh Nejat³

¹Department of Neurosurgery, Shahid Beheshti University of Medical Sciences, Tehran, Iran

²Department of Computer Engineering, North Tehran Branch, Islamic Azad University, Tehran, Iran

³Department of Neurosurgery, Tehran University of Medical Sciences, Tehran, Iran

Abstract

Background: Shunt Infection is a common complication of shunt insertion in children which can lead to bad neuro-developmental conditions and impose a considerable economic burden for the health care system. So, identifying predictive factors of shunt infection could help us in the proper improvement of this deteriorating condition.

Methods: In this study, related risk factors of 68 patients with history of shunt infection and 80 matched controls without any history of shunt infection, who were all operated in a single referral hospital were assessed. Three machine learning (ML)-based measures including sparsity, correlation, and redundancy along with specialist's score were applied to select the most important predictive risk factors for shunt infection. ML was determined by summation of sparsity, correlation and redundancy measures, and the final total score was considered as normalization (ML-based score + specialist score).

Results: According to the total score, prematurity, first ventriculoperitoneal shunting (VPS) age, intraventricular hemorrhage (IVH), myelomeningocele (MMC) and low birth weight had higher weights as shunt infection risk factors. icterus, trauma, co-infection and tumor had the lowest weights and history of meningitis and number of shunt revisions were defined as intermediate risk factors.

Conclusion: The "ML-based clinical adjusted" method may be used as a complementary tool to help neurosurgeons in better patient selection and more accurate follow-up of children with higher risk of shunt infection.

Keywords: Hydrocephalus; Shunt infection; Sparsity; Correlation; Redundancy.

*Correspondence to

Ehsan Moradi, Assistant Professor, Department of Neurosurgery, Shahid Beheshti University of Medical Sciences, Tehran, Iran, Email: moradieh@sbmu.ac.ir

Published online June 30, 2021



Citation: Moradi E, Sabeti M, Shahbazi N, Habibi Z, Nejat F. Machine learning-based clinical adjusted selection of predicting risk factors for shunt infection in children. Clin Neurosci J. 2021;8(3):135-143. doi:10.34172/icnj.2021.28.

Introduction

Cerebrospinal fluid (CSF) is continuously secreted in the central nervous system (CNS), flows through ventricles and the sub-arachnoid space and mainly absorbed in brain venous blood system. A precise balance between secretion and absorption of CSF is crucial for the maintenance of normal intracranial pressure (ICP).¹ Hydrocephalus identified by excessive volume of CSF in brain ventricles or sub arachnoid space, which is mostly related to obstruction in CSF drainage pathways or decrease in brain blood flow absorption.

Hydrocephalus occurs in 1%-2% of the general population during lifetime. The most common etiologies of hydrocephalus are tumors, CNS infections, head trauma and brain developmental abnormalities. Hydrocephalus can present with increase in head circumference, decreased vision, loss of consciousness, progressive

neurodevelopmental deterioration and sudden death; so it is considered as a neurosurgical emergency. Symptomatic hydrocephalus is usually treated with ventricular shunt placement which is the most common neurosurgical procedure. Placing a ventricular shunt saves so many lives each year, but like any other surgical intervention, it has known complications.^{2,3}

Shunt infection is the most common complication of shunt insertion and could cause many significant morbidities such as neurodevelopmental delay, decrease IQ of affected child and high economic cost for the health care system. The shunt infection rate varies from 10%-22% in different studies and about 90% of infections occur three months after operation. There are some potential risk factors for shunt infection such as patient's age, etiology of hydrocephalus, length of hospitalization, number of shunt revisions, surgeon's experience, duration

of operation, surgical technique, etc,⁴ but the infinite risk factors and the quantity of their role in predisposing shunt infection is still controversial. So, accurate determination of shunt infection risk factors can improve our current practice in preventing this catastrophic complication.

As an attempt to use machine learning (ML) techniques in medical researches, some medical informatics such as logistic regression and artificial neural networks (ANNs) have been applied to develop models for the prediction task. Habibi and colleagues⁵ performed univariate analysis for determining shunt infection risk factors. Five variables including low birth weight, age at the first shunting procedure, shunt revision, history of prematurity, and myelomeningocele (MMC) were significantly associated with higher risk of shunt infection using univariate analysis. They concluded ANN can predict pediatric shunt infection in hydrocephalus children with an accuracy of 83.1%. Sabeti et al⁶ applied the state-of-art techniques to select the most informative predicting factors for prediction of shunt infection in hydrocephalic children. The probability (accuracy) of shunt infection was determined with different intelligent and statistical classifiers. Their results indicated that history of prematurity and intraventricular hemorrhage, age of the first shunt procedure, number of shunt revisions, brain tumor induced hydrocephalus, birth weight, and coinfection were the best descriptive features with an accuracy of 68%–81%.

Tunthanathip and colleagues⁷ applied ML techniques for predicting risk of infection after neurosurgical operations. Using the backward stepwise method, they determined the significant predictors of surgical site infection in the multivariable Cox regression analysis as postoperative CSF leakage/subgaleal collection and postoperative fever. They concluded the Naive Bayes algorithm was an accurate ML method for predicting surgical site infection after neurosurgical operations.

Luz and colleagues⁸ reviewed the methodological aspects of ML techniques in the field of general infection management. Between 52 included studies, 35 different ML techniques were used. Logistic regression was applied in 18 studies followed by random forest, support vector machine, and ANN in 18, 12, and 7 studies, respectively. They concluded that building trust in these new technologies would require further improvement and more explanation of the ability and interpretability of applied models. Muscas and colleagues⁹ analyzed different ML models to predict shunt-dependent hydrocephalus after aneurysmal subarachnoid hemorrhage. They suggested a single best distributed random forest model could be very helpful in identifying low-risk patients for shunt-dependency with an accuracy of 90%. Therefore, ML prognostic models could allow accurate predictions with a large number of variables and a more subject-oriented prognosis.

When ML models are used in exploring relationships between different materials (risk factors and prediction labels), proper risk factor selection is the most important issue. The most common risk factor selection algorithms usually require hyper-parameter tuning and do not actively consider the prior knowledge of domain experts. Therefore, integration of weighted scores of domain experts with ML selection process may decrease the probability of clinical crucial risk factors elimination. In this study, we attempt to predict pediatric shunt infection risk factors more accurately by using different ML selection methods and their integration with pediatric neurosurgeon's weighted scores.

Materials and Methods

Data Description

Hydrocephalus is usually defined as increased volume of CSF in the CNS, as a result of obstruction in CSF pathways or diminish in CSF absorption (Figure 1). Definite diagnosis of shunt infection is determined by identification of bacterial pathogens in the CSF or shunt hardware culture. In patients with negative CSF culture and clinical evidence of CNS infection, shunt infection could be considered with abnormal CSF analysis parameters (positive smear, low glucose level, high white blood cell count or high lactate level), exposure of shunt device or presence of infected pseudocyst in the abdomen.

In this study, among more than 800 ventriculoperitoneal shunt procedures that have been performed by the senior author (Habibi et al⁵) in Children's Medical Center hospital of Tehran (Iran) on hydrocephalus patients under the age of 12, 148 patients with hydrocephalus were selected by considering a set of meticulous inclusion/exclusion criteria. 68 patients with shunt infection were consecutively enrolled, and 80 patients without shunt infection (with the same protocol and inclusion/exclusion criteria) who have had undergone shunting procedure in the same week were considered as controls for each case. The patients were included only if they have undergone

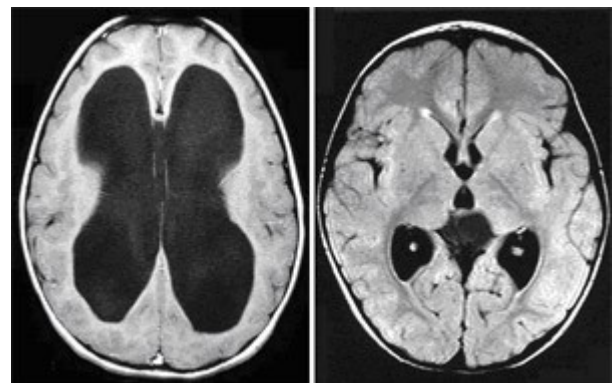


Figure 1. The Hydrocephalic Brain (Left), the Normal Brain (Right) (Seattle Children's Hospital¹⁰).

ventriculoperitoneal shunting (VPS) in an elective setting with a standard protocol and had completed a follow-up period of at least six months. The method and time of surgery, prophylactic antibiotic, operation theater settings, and the number of staff inside the theater were equal in all cases. Those with ventriculoatrial shunting, operation in an emergent setting, first procedure in other centers, deviation from the protocol, incomplete or inaccessible medical data, and incomplete or missing follow-up were excluded from the study. For each patient, demographic and medical information including sex, parents' consanguinity, gestational age at birth, type of delivery, birth weight, prematurity, head circumference at birth, neonatal icterus, history of MMC, history of meningitis, history of intraventricular hemorrhage (IVH), head trauma, brain tumor, age at surgery time, duration of surgery, type of inserted shunt, other-site active infection within 30 days prior to shunt insertion, CSF leak after shunting, and numbers of previous shunt revisions were recorded (Table 1).

Proposed Risk Factor Selection

Risk factor selection is a preprocessing technique that identifies the key risk factors of a given problem.^{11, 12} It can be used in shunt infection prediction, it cannot only reduce dimensionality but also help us understand the causes of shunt infection. To the best of our knowledge, many specialists often rely on trial-and-error process or personal biased experience in selecting risk factors. Moreover, most ML-based algorithms tend to ignore the prior knowledge of specialists about more relevant risk factors which may result in removing some crucial risk factors. Hence, we analyzed our dataset with risk factor selection method incorporating domain expert knowledge. The proposed approach includes three measures of sparsity, correlation, and redundancy which were finally adjusted with the weighted score of the specialists.

Sparsity Measure

Sparsity¹³ determines how far a set of numbers is spread out from their average value. For a continuous variable, if its variance is close to zero (it means the variable fluctuates in a small range), so the variable can be removed (it means its correlation with target attribute cannot be precisely evaluated). For a discrete variable, if the fraction of a certain value of the variable exceeds 85% of the total number of samples, the discrete variable can be removed. The sparsity of each risk factor can be defined as

$$sparsity(x_i) = \begin{cases} \frac{1}{n} \sum_{i=1}^n x_i, & \text{if } x_i \text{ is bool} \\ \frac{1}{n-1} \sum_{i=1}^n (x_i - \bar{x}_i)^2, & \text{otherwise} \end{cases} \quad (1)$$

where \bar{x}_i shows the mean value. For selection procedure,

Table 1. The Available Risk Factors From 148 Children With Hydrocephalus

Risk Factors	With Shunt Infection	Without Shunt Infection	Total
Birth weight			
≤2000	14	5	19
2000-2500	4	6	10
2500-3000	28	23	51
3000-3500	13	37	50
≥3500	9	9	18
Prematurity			
Yes	25	14	39
No	43	66	109
Trauma			
Yes	0	2	2
No	68	78	146
History of meningitis			
Yes	3	3	6
No	65	77	142
Tumor			
Yes	3	5	8
No	65	75	140
History of IVH			
Yes	13	10	23
No	55	70	125
Icterus			
Yes	9	4	13
No	59	76	135
Co-Infection			
Yes	6	3	9
No	62	77	139
History of MMC			
Yes	9	24	33
No	59	56	115
Age at first surgery			
<2 weeks	12	1	13
>2 weeks	56	79	135
Number of shunt revisions			
0	4	42	46
1	37	30	67
2	13	5	18
3	8	2	10
4	2	1	3
5	1	0	1
6	1	0	1
7	1	0	1
8	1	0	1

the sparsity value of risk factors compared with a predefined threshold. If sparsity meets threshold, the risk factor will be discarded, otherwise, retained. Threshold is set to mean value for this measure in this study.

Correlation Measure

Correlation¹³ was chosen as a second measure to determine the correlation between the different risk factors and target attribute, respectively. In this study, we applied mutual information (MI) procedure to estimate the correlation measure. MI of two random variables x and y quantifies the “amount of information” obtained about one random variable (x) with observing the other random variable (y). It measures the information that x and y share (how much knowing about variable x , reduces uncertainty about variable y). If x and y are independent, so knowing x does not give any information about y and vice versa, it causes their mutual information be zero. In this study, we tried to eliminate irrelevant risk factors (those that weakly correlated to the target attribute) with correlation measure defined, as follows:

$$correlation(x, y) = MI(x_i, y) \tag{2}$$

$$MI(Y, X) = H(Y) - H(Y|X) \tag{3}$$

$$H(Y) = -\sum_y P(y) \log(P(y)) \tag{4}$$

$$H(Y|X) = -\sum_x \sum_y P(x, y) \log(p(y|x)) \tag{5}$$

where if the correlation between the risk factors and target attribute is lower than predefined threshold (here, the median value), the risk factor will be removed.

Redundancy Measure

Correlation measure¹³ tries to retain strong correlation between risk factors and target attribute, but correlation among different risk factors is not analyzed. Here, redundancy measure can be used to evaluate redundancy among risk factors. Redundancy between subset of risk factors can be estimated based on Pearson’s correlation coefficient (PCC), as follows:

$$PCC = \frac{Cov(X, Y)}{\sqrt{Var(X)}\sqrt{Var(Y)}} \tag{6}$$

where if redundancy value is greater than the predefined threshold, one of the two risk factors will be removed, otherwise, the two risk factors will be both retained. In this study, the predefined threshold is considered the mean value for redundancy measure.

Specialist Score

Considering the prior knowledge of specialists about more relevant risk factors prevents removing the crucial

risk factors. In this study, we incorporated the importance of the risk factors depends on the domain knowledge of the specialists. We quantify that aspect by *Score* measure that includes the importance score (weight) of the risk factor given by each specialist. The importance score of the risk factor is described as

$$Score = \sum_{i=1}^n w_i sp_i \tag{7}$$

$$sp = \begin{cases} 0 \\ 0.5 \\ 1 \end{cases} \tag{8}$$

where n is the number of specialists and w_i shows the rating weight of each specialist (since all specialist in this study are senior in pediatric neurosurgery, we assigned the same rating weight to all of them). $sp=1$ indicates that the expert thinks the risk factor is crucial, $sp=0.5$ indicates that the expert is uncertain about the importance of the risk factor, and $sp=0$ indicates that the expert considers the risk factor is not important. If weighted specialist score is greater than the threshold (here, the mean value), risk factor will be retained, otherwise, the risk factor is removed. The sp weights of the three senior specialist are shown in Table 2.

Classification

Classification can be used to create models describing the mapping from risk factors to prediction labels with generalization ability for never-seen before inputs. In this part, some widely-used classifiers such as BayesNet,¹⁴ multi-layer perceptron,¹⁵ random forest¹⁴ and Bagging¹⁶ are chosen as candidate classifiers.

Results and Discussion

In the first stage, the state-of-art classifiers are employed for predicting shunt infection. All 11 features are used in this stage, and our results in Table 3 are obtained using

Table 2. The Scores by Three Senior Pediatric Neurosurgeons

Risk factor	Expert 1	Expert 2	Expert 3
Low birth weight	0.5	1	0.5
Prematurity	1	1	1
Trauma	0.5	0.5	0
Meningitis	0.5	1	0.5
Tumor	0	0.5	0
IVH	0.5	0.5	0.5
Icterus	0	0	0
Co-Infection	0.5	0.5	0.5
MMC	1	0.5	0
First VPS Age	0.5	1	1
Number of revisions	0.5	1	0.5

10-fold cross validation. In 10-fold cross-validation, our dataset (148 samples) is randomly partitioned into 10 equal size subsamples. Of the 10 partitions, a single partition is retained as the validation data for testing the classifier, and the remaining 9 partitions are used as training data. The cross-validation process is then repeated 10 times where each of the 10 partitions used exactly once as the validation data, and the final result is considered as average of 10 folds. In this study, all mentioned classifiers were applied in Weka software.¹⁷ Our results in Weka software showed that the prediction accuracy of shunt infection ranged from 70% to 76% (Table 3).

In the second stage, four measures were calculated: sparsity, correlation, redundancy and weighted specialist scores. The last measure was defined as the average of given scores of three pediatric neurosurgeons to each risk factor as their considered role in shunt infection. The value of different measures for each risk factor is shown in Table 4.

In the third stage, predefined threshold is applied to select the most important risk factors for each measure. If a selected risk factor meets the predefined threshold, it remains, otherwise it is removed from the process. Selected risk factors for each measure are shown in Figures 2, 3, 4, and 5, separately. Low birth weight, prematurity, IVH, MMC, and number of revisions are selected by sparsity method. By using correlation measure, the

selected risk factors were low birth weight, prematurity, MMC, age at first shunt surgery and number of revisions. Low birth weight, trauma, history of meningitis, age at first shunt surgery and number of revisions were chosen by redundancy measure. And finally, specialist scores highlighted low birth weight, prematurity, history of meningitis, age at first shunt surgery and number of revisions as the most important risk factors for shunt infection.

In the fourth stage, for each risk factor, the differentiation between shunt infection group and the control group was evaluated using Student's *t* test. The significance level of $P < 0.05$ was considered statistically significant. The normalized ML-based score (Sparsity + Correlation + Redundancy) was calculated, and compared with the specialist score (Table 5). Additionally, the normalized total score (ML-based score + specialist score) was determined (Table 5).

In order to better differentiate between risk factors; we decided to categorize them into three subgroups based on final total score. Features with total score of 0.66 to

Table 3. The Prediction Results Obtained From Weka Software

Algorithm	Precision Rate	Recall Rate	F-Measure Rate	ROC Area
BayesNet	76.60	71.60	70.90	71.80
Multi-layer perceptron	70.60	70.30	69.80	74.90
Random Forest	74.30	74.30	74.20	85.30
Bagging	75.30	75.00	75.00	82.10

Table 4. The Value of Different Measures for Each Risk Factor

	Sparsity	Correlation	Redundancy	Specialist Score
Low birth weight	0.0433	0.3790	0.6396	0.6667
Prematurity	0.7365	0.0344	0.4474	1.0000
Trauma	0.0000	0.0121	0.4694	0.3333
Meningitis	0.0000	0.0002	0.6484	0.6667
Tumor	0.0000	0.0012	0.6638	0.1667
IVH	0.8446	0.0060	0.5264	0.5000
Icterus	0.0000	0.0153	0.6376	0.0000
Co-Infection	0.0000	0.0081	0.6589	0.5000
MMC	0.7770	0.0301	0.4933	0.5000
First VPS Age	0.0129	0.7631	0.4499	0.8334
Number of revisions	0.0274	0.2918	0.6144	0.6667

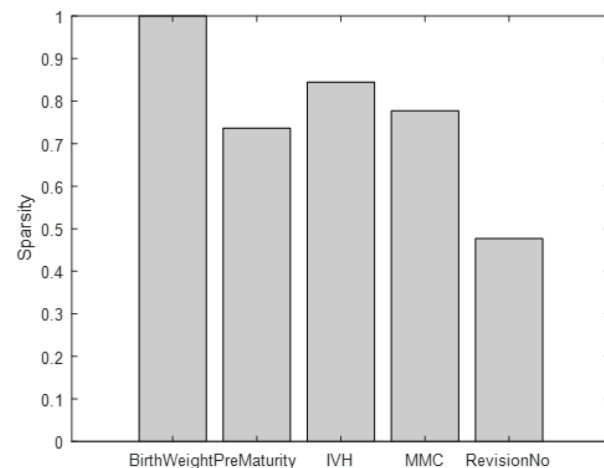


Figure 2. The Selected Risk Factors by Sparsity Measure.

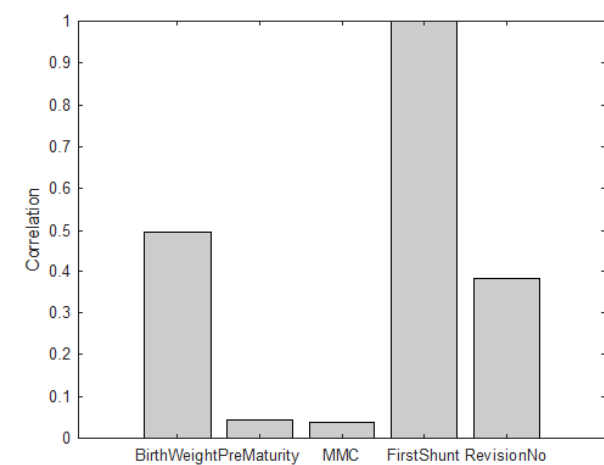


Figure 3. The Selected Risk Factors by Correlation.

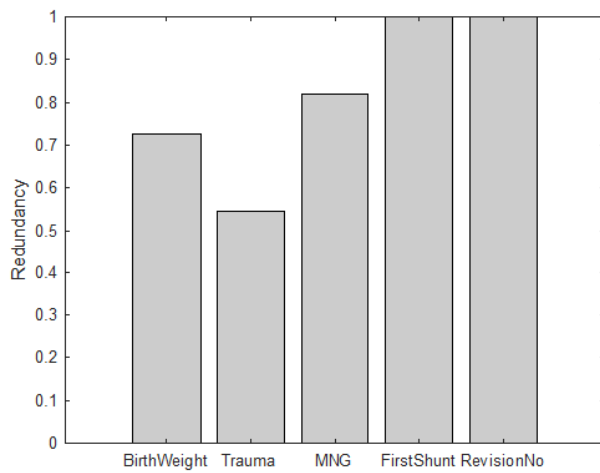


Figure 4. The Selected Risk Factors by Redundancy Measure.

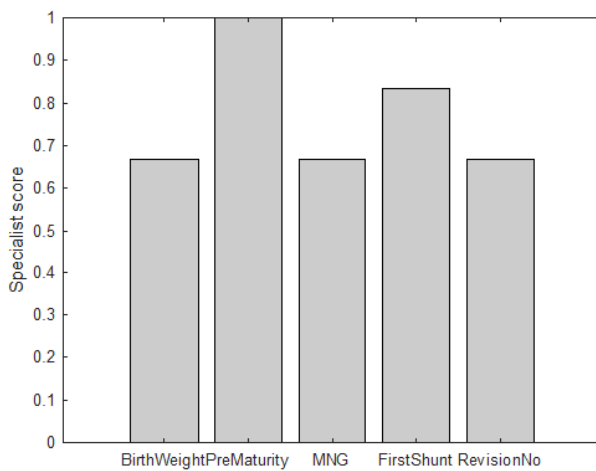


Figure 5. The Selected Risk Factors by Specialist Score.

1.00 were considered as high-ranked risk factors and those with a total score of 0.00 to 0.33 were placed in low-ranked group. An intermediate-ranked group was defined for features with a total score of 0.33 to 0.66. According to the total score, prematurity, first VPS age, IVH, MMC and low birth weight had higher weights as the shunt infection risk factors. Icterus, trauma, co-infection, and tumor have the lowest weights and history of meningitis, number of shunt revisions were defined as intermediate risk factors. Table 6 shows these ranked risk factors.

Now, the clinical correlation of each feature with its weighted score is explained:

High-Ranked Factors

Prematurity: Traditionally, prematurity is defined as an independent risk factor for shunt infection due to immature immune system and undeveloped skin barrier in preterm neonates.¹⁸⁻²⁰ The specialist score of this feature was the highest [1.00] which reflect the clinical

importance of this item and interestingly, it has a high ML-based score. Additionally, after using *t* test between the cohort and control group, a significant statistical difference was observed between the two groups in terms of prematurity ($P < 0.05$). So, according to our method, prematurity was the most important factor contributed with shunt infection and pediatric neurosurgeons are recommended to postpone shunt insertion as much as possible in preterm patients if it is possible or consider alternative interventions such as brain endoscopy.

First VPS age: A higher risk for shunt infection is reported in young aged neonates especially in those less than six months of age^{18,21,22} because of their under-developed immune system. Here, although the first VPS age was not statistically significant in our series which may be related to the selection bias of postponing shunt insertion as much as possible in very young babies if it could be possible in our hospital; the specialist score and ML-based score were highly aligned which results in a high total score (0.90) and make this parameter significant. This result is generally in accordance with literature and common opinion between pediatric neurosurgeons.

Intraventricular hemorrhage: IVH is defined as an independent risk factor for shunt infection because of other independent coexisting factors like prematurity in very young neonates and more revision operations in elder children.²⁰ Although, this factor was not statistically significant in this series ($P > 0.05$) and the specialist score

Table 5. The Comparison of Normalized ML-Based Score, Specialist Scores and Normalized Total Score

	P Value	ML-Based Score	Specialist Score	Total Score
Prematurity	< 0.05	0.82	1.00	1.00
First VPS Age	> 0.05	0.83	0.83	0.90
IVH	> 0.05	1.00	0.50	0.80
MMC	< 0.05	0.91	0.50	0.75
Low birth weight	< 0.05	0.64	0.67	0.69
Number of revisions	< 0.05	0.51	0.67	0.61
Meningitis	> 0.05	0.18	0.67	0.40
Co-Infection	> 0.05	0.20	0.50	0.31
Tumor	> 0.05	0.20	0.17	0.11
Trauma	> 0.05	0.00	0.33	0.08
Icterus	< 0.05	0.19	0.00	0.00

Table 6. The Ranked Risk Factors

High-Ranked	Intermediate-Ranked	Low-Ranked
Prematurity First VPS age IVH MMC Low birth weight	Number of shunt revisions History of meningitis	Co-infection Brain Tumor Trauma Icterus

gives a medium rank to it (0.5); this feature has the highest ML-based score among other risk factors because of its high sparsity.

Myelomeningocele (MMC): Neonates with MMC often require shunt insertion because of coexisting hydrocephalus. There is usually risk of CSF leakage from MMC and they usually have shunt placement in first months of age; both predispose them to shunt infection. Having MMC was statistically significant in our study and had a high ML-based (0.91) and total score (0.75) which is aligned with many other classic studies.^{5,23}

Low birth weight: Low birth weight infants have higher risk of shunt infection which could be secondary to prematurity at least in some cases²⁴⁻²⁶ but as an independent factor, it was statistically significant in our series ($P < 0.05$). This factor had an almost high total score in our study (0.69); and as a recommendation, insertion of shunt when the neonate gained a higher weight was acceptable if it was possible.

Intermediate-Ranked Risk Factors

Number of shunt revisions: More than 50% of the patients with VP shunt have shunt malfunction and require at least one revision shunt surgery²⁷ which potentially predispose the shunt hardware and CNS to pathogen microorganism.^{26,28,29} This factor was statistically significant in our series as a risk factor for shunt infection. A higher specialist score (0.67) was given to this feature than ML-based score (0.51) which adjusts total score to 0.61 and placed this factor in the intermediate risk group. Meticulous consideration of protective protocols during revision surgeries could result in lower risk of infection.

History of meningitis: History of treated CNS infection could be considered as a risk factor for shunt infection but there is no strong evidence in literature for it.²³ History of meningitis was not statistically significant in our series which is in line with so many recent studies.²⁹⁻³¹ It had an intermediate total score (0.40) in our study, reflecting a moderate role for this feature in increasing the risk of shunt infection so a more close follow-up is recommended in patients with history of CNS infection.

Low-Ranked Risk Factors

Co-infection: Blood bone infection such as gastrointestinal infections (peritonitis) or dental abscess may increase risk of late shunt infections, however, it is not considered as a prevalent risk factor in general practice.³²⁻³⁴ In our series, this factor was not statistically significant ($P > 0.05$) and had low ML-based score which resulted in a low total score (0.31).

Brain tumor: Any other brain surgery including brain tumor resection could potentially increase risk of CNS infection by exposing CSF to external microorganisms. On the other hand, risk of shunt malfunction and subsequent shunt revision operation may be higher in

these patients, but classically, brain tumor hydrocephalus is not considered as a strong risk factor for shunt infection in literature.^{23,35,36} Here, this feature is not statistically significant and had low values in ML-based score and total score which is in line with most other clinical data.

Trauma: Hydrocephalus usually occurs in severe brain injuries and almost treated with VP shunt if it is symptomatic. This feature was not statistically significant in our series and had a very low total score (0.08) which is confirmed by previous clinical experience.^{23,37,38}

Icterus: Icterus was not an important factor for shunt infection and had the lowest total score (0.00) which marked it as the lowest weighted feature in our series.

In this study, we tried to incorporate domain expert knowledge into ML techniques. Integration of weighted scores of human experts with ML selection process may decrease the probability of clinical crucial risk factors elimination. In our previous study,⁶ we focused on the well-known techniques for prediction of shunt infection in patients with hydrocephalus without considering specialist knowledge. Ignoring the prior knowledge of specialist results in removing some crucial risk factors such as MMC, history of meningitis, but some less clinical important factors as co-infection and brain tumor are selected.

Conclusion

We used a combination of different ML approaches to determine the rank of each risk factor in shunt infection, then in an attempt to improve our results with current clinical knowledge, we combined ML-based scores with given specialists score which result in final total score. Our results are in line with previous classic medical studies. So, this “machine learning based - clinical adjusted” method may be used as a complementary tool to help neurosurgeons in better patient selection and more accurate follow-up of children with higher risk of shunt infection.

Ethical Statement

Non applicable.

Conflict of Interest Disclosures

None declared.

Funding

None.

References

1. Cinalli G, Maixner WJ, Sainte-Rose C. Pediatric Hydrocephalus. Springer Science & Business Media; 2012.
2. Gutierrez-Murgas Y, Snowden JN. Ventricular shunt infections: immunopathogenesis and clinical management. *J Neuroimmunol.* 2014;276(1-2):1-8. doi: 10.1016/j.jneuroim.2014.08.006.
3. Kestle JR, Holubkov R, Douglas Cochrane D, Kulkarni AV,

- Limbrick DD Jr, Luerssen TG, et al. A new Hydrocephalus Clinical Research Network protocol to reduce cerebrospinal fluid shunt infection. *J Neurosurg Pediatr.* 2016;17(4):391-6. doi: 10.3171/2015.8.peds15253.
4. Lee JK, Seok JY, Lee JH, Choi EH, Phi JH, Kim SK, et al. Incidence and risk factors of ventriculoperitoneal shunt infections in children: a study of 333 consecutive shunts in 6 years. *J Korean Med Sci.* 2012;27(12):1563-8. doi: 10.3346/jkms.2012.27.12.1563.
 5. Habibi Z, Ertiaei A, Nikdad MS, Mirmohseni AS, Afarideh M, Heidari V, et al. Predicting ventriculoperitoneal shunt infection in children with hydrocephalus using artificial neural network. *Childs Nerv Syst.* 2016;32(11):2143-51. doi: 10.1007/s00381-016-3248-2.
 6. Sabeti M, Boostani R, Moradi E, Habibi Z, Nejat F. Predicting shunt infection in children with hydrocephalus. *Intell Based Med.* 2021;5:100029. doi: 10.1016/j.ibmed.2021.100029.
 7. Tunthanathip T, Sae-Heng S, Oearsakul T, Sakarunchai I, Kaewborisutsakul A, Taweksomboonyat C. Machine learning applications for the prediction of surgical site infection in neurological operations. *Neurosurg Focus.* 2019;47(2):E7. doi: 10.3171/2019.5.focus19241.
 8. Luz CF, Vollmer M, Decruyenaere J, Nijsten MW, Glasner C, Sinha B. Machine learning in infection management using routine electronic health records: tools, techniques, and reporting of future technologies. *Clin Microbiol Infect.* 2020;26(10):1291-9. doi: 10.1016/j.cmi.2020.02.003.
 9. Muscas G, Matteuzzi T, Becattini E, Orlandini S, Battista F, Laiso A, et al. Development of machine learning models to prognosticate chronic shunt-dependent hydrocephalus after aneurysmal subarachnoid hemorrhage. *Acta Neurochir (Wien).* 2020;162(12):3093-105. doi: 10.1007/s00701-020-04484-6.
 10. Hospital SCs. Seattle Children's Hospital 2021. Available from: <https://www.seattlechildrens.org/conditions/hydrocephalus>.
 11. Remeseiro B, Bolon-Canedo V. A review of feature selection methods in medical applications. *Comput Biol Med.* 2019;112:103375. doi: 10.1016/j.combiomed.2019.103375.
 12. Shilaskar S, Ghatol A. Feature selection for medical diagnosis: evaluation for cardiovascular diseases. *Expert Syst Appl.* 2013;40(10):4146-53. doi: 10.1016/j.eswa.2013.01.032.
 13. Liu Y, Wu JM, Avdeev M, Shi SQ. Multi-layer feature selection incorporating weighted score-based expert knowledge toward modeling materials with targeted properties. *Adv Theory Simul.* 2020;3(2):1900215. doi: 10.1002/adts.201900215.
 14. Awaysheh A, Wilcke J, Elvinger F, Rees L, Fan W, Zimmerman KL. Review of medical decision support and machine-learning methods. *Vet Pathol.* 2019;56(4):512-25. doi: 10.1177/0300985819829524.
 15. Sidey-Gibbons JAM, Sidey-Gibbons CJ. Machine learning in medicine: a practical introduction. *BMC Med Res Methodol.* 2019;19(1):64. doi: 10.1186/s12874-019-0681-4.
 16. Baskin II, Marcou G, Horvath D, Varnek A. Bagging and boosting of classification models. In: Varnek A, ed. *Tutorials in Chemoinformatics.* Wiley; 2017. p. 241-7. doi: 10.1002/9781119161110.ch15.
 17. Witten IH, Frank E, Hall MA, Pal CJ. The WEKA Workbench. Online Appendix for "Data Mining: Practical Machine Learning Tools and Techniques". Morgan Kaufmann; 2016.
 18. Kulkarni AV, Drake JM, Lamberti-Pasculli M. Cerebrospinal fluid shunt infection: a prospective study of risk factors. *J Neurosurg.* 2001;94(2):195-201. doi: 10.3171/jns.2001.94.2.0195.
 19. Moussa WM, Mohamed MA. Efficacy of postoperative antibiotic injection in and around ventriculoperitoneal shunt in reduction of shunt infection: a randomized controlled trial. *Clin Neurol Neurosurg.* 2016;143:144-9. doi: 10.1016/j.clineuro.2016.02.034.
 20. Spader HS, Hertzler DA, Kestle JR, Riva-Cambrin J. Risk factors for infection and the effect of an institutional shunt protocol on the incidence of ventricular access device infections in preterm infants. *J Neurosurg Pediatr.* 2015;15(2):156-60. doi: 10.3171/2014.9.peds14215.
 21. Braga MH, Carvalho GT, Brandão RA, Lima FB, Costa BS. Early shunt complications in 46 children with hydrocephalus. *Arq Neuropsiquiatr.* 2009;67(2a):273-7. doi: 10.1590/s0004-282x2009000200019.
 22. Choux M, Genitori L, Lang D, Lena G. Shunt implantation: reducing the incidence of shunt infection. *J Neurosurg.* 1992;77(6):875-80. doi: 10.3171/jns.1992.77.6.0875.
 23. Winn H. *Youmans Neurological Surgery.* Vol 4. New York: Elsevier; 2011.
 24. Bruinsma N, Stobberingh EE, Herpers MJ, Vles JS, Weber BJ, Gavilanes DA. Subcutaneous ventricular catheter reservoir and ventriculoperitoneal drain-related infections in preterm infants and young children. *Clin Microbiol Infect.* 2000;6(4):202-6. doi: 10.1046/j.1469-0691.2000.00052.x.
 25. Dallacasa P, Dappozzo A, Galassi E, Sandri F, Cocchi G, Masi M. Cerebrospinal fluid shunt infections in infants. *Childs Nerv Syst.* 1995;11(11):643-8. doi: 10.1007/bf00300722.
 26. Simon TD, Whitlock KB, Riva-Cambrin J, Kestle JR, Rosenfeld M, Dean JM, et al. Revision surgeries are associated with significant increased risk of subsequent cerebrospinal fluid shunt infection. *Pediatr Infect Dis J.* 2012;31(6):551-6. doi: 10.1097/INF.0b013e31824da5bd.
 27. Wells DL, Allen JM. Ventriculoperitoneal shunt infections in adult patients. *AACN Adv Crit Care.* 2013;24(1):6-12. doi: 10.1097/NCI.0b013e31827be1d1.
 28. Rogers EA, Kimia A, Madsen JR, Nigrovic LE, Neuman MI. Predictors of ventricular shunt infection among children presenting to a pediatric emergency department. *Pediatr Emerg Care.* 2012;28(5):405-9. doi: 10.1097/PEC.0b013e318252c23c.
 29. Simon TD, Butler J, Whitlock KB, Browd SR, Holubkov R, Kestle JR, et al. Risk factors for first cerebrospinal fluid shunt infection: findings from a multi-center prospective cohort study. *J Pediatr.* 2014;164(6):1462-8.e2. doi: 10.1016/j.jpeds.2014.02.013.
 30. Sacar S, Turgut H, Toprak S, Cirak B, Coskun E, Yilmaz O, et al. A retrospective study of central nervous system shunt infections diagnosed in a university hospital

- during a 4-year period. *BMC Infect Dis.* 2006;6:43. doi: 10.1186/1471-2334-6-43.
31. Vafaei Shahi M, Noorbakhsh S, Ashouri S, Tahernia L, Raghani Derakhshani M. The complication for ventricular shunt based on different etiologies: a prospective study in Tehran, Iran. *Open Neurol J.* 2018;12(1):57-63. doi: 10.2174/1874205x01812010057.
 32. Reddy GK, Bollam P, Caldito G. Ventriculoperitoneal shunt surgery and the risk of shunt infection in patients with hydrocephalus: long-term single institution experience. *World Neurosurg.* 2012;78(1-2):155-63. doi: 10.1016/j.wneu.2011.10.034.
 33. Vinchon M, Dhellemmes P. Cerebrospinal fluid shunt infection: risk factors and long-term follow-up. *Childs Nerv Syst.* 2006;22(7):692-7. doi: 10.1007/s00381-005-0037-8.
 34. Vinchon M, Lemaitre MP, Vallée L, Dhellemmes P. Late shunt infection: incidence, pathogenesis, and therapeutic implications. *Neuropediatrics.* 2002;33(4):169-73. doi: 10.1055/s-2002-34490.
 35. Gassas A, Kennedy J, Green G, Connolly B, Cohen J, Dag-Ellams U, et al. Risk of ventriculoperitoneal shunt infections due to gastrostomy feeding tube insertion in pediatric patients with brain tumors. *Pediatr Neurosurg.* 2006;42(2):95-9. doi: 10.1159/000090462.
 36. Hong B, Polemikos M, Heissler HE, Hartmann C, Nakamura M, Krauss JK. Challenges in cerebrospinal fluid shunting in patients with glioblastoma. *Fluids Barriers CNS.* 2018;15(1):16. doi: 10.1186/s12987-018-0101-x.
 37. Kim HS, Lee SU, Cha JH, Heo W, Song JS, Kim SJ. Clinical analysis of results of shunt operation for hydrocephalus following traumatic brain injury. *Korean J Neurotrauma.* 2015;11(2):58-62. doi: 10.13004/kjnt.2015.11.2.58.
 38. Meng F, Wu H, Yang S. Clinical application of ventriculoperitoneal shunting in treating traumatic brain injury. *Exp Ther Med.* 2019;18(4):2497-502. doi: 10.3892/etm.2019.7860.