

# Effect of cardiac rehabilitation on metabolic syndrome and its components: A systematic review and meta-analysis

Masoumeh Sadeghi, Amin Salehi-Abargouei<sup>1,2</sup>, Zahra Kasaei<sup>3</sup>, Hamidreza Sajjadih-Khajooie<sup>3</sup>, Ramin Heidari<sup>4</sup>, Hamidreza Roohafza<sup>3</sup>

Cardiac Rehabilitation Research Center, Cardiovascular Research Institute, <sup>1</sup>Nutrition and Food Security Research Center, <sup>2</sup>Department of Nutrition, Faculty of Health, Shahid Sadoughi University of Medical Sciences, Yazd, <sup>3</sup>Isfahan Cardiovascular Research Center, <sup>4</sup>Interventional Cardiology Research Center, Cardiovascular Research Institute, Isfahan University of Medical Sciences, Isfahan, Iran

**Background:** Although the effect of cardiac rehabilitation (CR) on cardiovascular disease (CVD) prognosis has been well-documented by several systematic reviews, none have focused on the effect of CR on metabolic syndrome (MetS) and its related components. Therefore, the present systematic review and meta-analysis was conducted to assess the effect of CR on MetS and its components. **Materials and Methods:** PubMed, SCOPUS, Cochrane library, and Google Scholar database were searched up to February 2014 with no date and language restrictions. The random effects model was used to assess the overall effect of CR on MetS prevalence and the change in metabolic or anthropometric measures. **Results:** Fifteen studies with 19,324 subjects were included in the present systematic review and meta-analysis. Our analysis showed that the CR could significantly reduce MetS prevalence [reduction rate: 0.25, 95% confidence interval (CI): 0.21, 0.3, *P* value <0.001; *P* value for heterogeneity <0.001, I-squared: 86.2%]. Additionally, results showed the protective role of CR on all MetS components including high density lipoprotein cholesterol [mean difference (MD): 2.13 mg/dL, 95% CI: 1.17, 3.1], triglyceride (MD: -27.45 mg/dL, 95% CI: -36.92, -17.98), systolic blood pressure (SBP) (MD: -6.20 mmHg, 95% CI: -8.41, -3.99), diastolic blood pressure (DBP) (MD: -2.53 mmHg, 95% CI: -3.64, -1.41), fasting blood sugar (FBS) (MD: -6.42 mg/dL, 95% CI: -6.85, -5.99), and waist circumference (WC) (MD: -2.25 cm, 95% CI: -3.15, -1.35). **Conclusion:** CR has resulted in improvement in MetS and its entire components, and could be considered as a useful tool for MetS patients, especially among those with CVD.

**Key words:** Cardiac rehabilitation (CR), meta-analysis, metabolic factors, syndrome x

**How to cite this article:** Sadeghi M, Salehi-Abargouei A, Kasaei Z, Sajjadih-Khajooie H, Heidari R, Roohafza H. Effect of cardiac rehabilitation on metabolic syndrome and its components: A systematic review and meta-analysis. *J Res Med Sci* 2016;21:18.

## INTRODUCTION

Metabolic syndrome (MetS), also called syndrome X, is a cluster of metabolic factors including hypertension, dyslipidemia, abdominal obesity, and impaired plasma glucose, which are highly related to cardiovascular disease (CVD).<sup>[1]</sup> There are several definitions for MetS but their parameters are generally the same and have some slight differences. Three widely used definitions are those proposed by the World Health Organization (WHO),<sup>[2]</sup> the National Cholesterol Education Program Adult Treatment Panel III (NCEP ATP III),<sup>[3]</sup> and the

International Diabetes Federation (IDF).<sup>[4]</sup> According to Adult Treatment Panel III (ATP III) criteria, one-third of overweight and obese people in the United States have MetS.<sup>[5]</sup> Today, the increase in its prevalence as a result of the increased prevalence of obesity and sedentary lifestyle has been well-documented, especially in older adults.<sup>[6]</sup> Moreover, the prevalence of MetS in cardiac rehabilitation (CR) program is estimated to be 48-58%, which is more than twice the prevalence in the general population<sup>[5,7]</sup> and it is proposed that the MetS among coronary heart disease (CHD) patients is associated with higher rates of morbidity and mortality.<sup>[1,8,9]</sup>

### Access this article online

Quick Response Code:

Website:

www.jmsjournal.net

DOI:

\*\*\*\*

This is an open access article distributed under the terms of the Creative Commons Attribution-NonCommercial-ShareAlike 3.0 License, which allows others to remix, tweak, and build upon the work non-commercially, as long as the author is credited and the new creations are licensed under the identical terms.

**For reprints contact:** reprints@medknow.com

**Address for correspondence:** Dr. Zahra Kasaei, Isfahan Cardiovascular Research Center, Cardiovascular Research Institute, Isfahan University of Medical Sciences, Isfahan, Iran. E-mail: z\_kasaei@yahoo.com

**Received:** 11-07-2015; **Revised:** 22-10-2015; **Accepted:** 02-02-2016

The first-line management in individuals with the MetS is lifestyle modification.<sup>[10]</sup> One of the core components of lifestyle modification is physical activity, which is the most important part of CR program for patients with CVDs too.<sup>[10-13]</sup> CR is a complex interventional therapy, which is defined as “comprehensive long-term services involving medical evaluation, prescribed exercise, cardiac risk-factor modification, health education, counseling, and behavioral interventions” by the U.S. Department of Health and Human Services and the National Heart, Lung, and Blood Institute.<sup>[14,15]</sup> As it is well-documented that exercise training and diet at least partly reverse MetS,<sup>[10]</sup> it would be useful to determine the efficacy of CR on MetS patients too. Although various studies were conducted to test the effect of CR on MetS patients, there are still inconsistent results on the effect of CR on reverse MetS and also its components. For instance, although several studies have failed to find any significant effect of CR on high density lipoprotein cholesterol (HDL-C),<sup>[16-18]</sup> some others have even documented its significant effects on HDL-C.<sup>[19-22]</sup> The same pattern can be observed in other metabolic factors too.<sup>[16-30]</sup> Therefore, the present article aimed to summarize and if possible, perform a meta-analysis on published data about the effect of CR on MetS reduction rate and its components or related metabolic and anthropometric markers.

## MATERIALS AND METHODS

### Search strategy

PubMed, SCOPUS, Cochrane library, and Google Scholar were searched up to February 2014 without any language or date restrictions. The search strategy was developed to maximize sensitivity of article identification and we used both terms selected from medical subject headings (MeSH) and non-MeSH terms including MetS X, MetS, syndrome x, insulin resistance, metabolic diseases in combination with CR, cardiovascular rehabilitation, cardiopulmonary rehabilitation, cardiac exercise, cardiovascular exercise, cardiopulmonary exercise, rehabilitation, and cardiac rehabilitation. Additional eligible studies were sought by a hand search of reference lists from primary articles, which were found to be related to the topic.

### Inclusion criteria

We included (a) interventional studies investigating the effect of CR (a supervised group-based program undertaken in a hospital or community setting such as a sports center.) (b) interventional studies conducted in adults (>18 years) with MetS (according to ATP III definitions or other guidelines); (c) interventional studies where at least one of the following outcome measures were assessed before and after CR: number of MetS patients, fasting blood sugar (FBS), total cholesterol (TC), triglyceride (TG), low density lipoprotein cholesterol (LDL-C), HDL-C, systolic blood pressure (SBP) and diastolic blood pressure (DBP), body mass index (BMI),

and waist circumference (WC). Titles and if needed, abstracts of retrieved articles were separately screened by two authors for their eligibility (ZK and MS) and disagreements were resolved by discussion with a third author (ASA).

### Data extraction

The information including the first author's name, year of publication, country of origin, MetS definition, prenumber and postnumber of MetS patients, and metabolic/ anthropometric factors were extracted. Data were extracted by a single reviewer (ZK) and checked by a second reviewer (ASA). Moreover, we contacted the authors of the included articles for additional unpublished data or clarification of data<sup>[18,21,26]</sup> when necessary to ensure that all related articles were represented in the meta-analysis.

### Statistical analysis

The change in mean (difference in means) cardiometabolic factors including FBS, TC, TG, LDL-C, HDL-C, SBP, DBP, BMI, and WC and their corresponding standard errors (SEs) were calculated based on the reported pre- and post-CR data and used as effect size. To calculate the mean changes and their corresponding standard deviations (SDs) for articles, which did not provide these data, we computed the correlation coefficient using articles that reported changes in the mean and SD of metabolic factors.<sup>[18,21]</sup> Furthermore, the MetS reduction rate was calculated from pre- and post-CR prevalence in each study of MetS as an effect size to be included in the meta-analysis. Summary mean estimates with their corresponding SDs were derived by the method explained by DerSimonian and Laird<sup>[31]</sup> using random effects model, taking between-studies variability into account. Statistical heterogeneity between studies was evaluated with Cochran's Q test and I-squared (I-squared more than 25% was considered as high heterogeneity).<sup>[32]</sup> Additionally, we performed a simple meta-regression analysis to investigate whether the heterogeneity found between studies was related to changes in WC. Subgroup analysis was also incorporated to check for the possible sources of between-studies heterogeneity.<sup>[32]</sup> Sensitivity analysis was also performed to explore the extent to which inferences might depend on a particular study or group of studies. Publication bias was assessed by visual inspection of funnel plots<sup>[33]</sup> and statistical assessment of asymmetry was done with Egger's regression asymmetry test and Begg's adjusted rank correlation test.<sup>[34]</sup> All statistical analyses were carried out by the use of Stata, version 11.2 (StataCorp, College Station, TX, USA). *P* values <0.05 were considered statistically significant.

## RESULTS

Our preliminary online search retrieved 1,200 studies, about 1,175 were excluded after reading titles or abstracts because

they did not met our inclusion criteria [Figure 1]. Finally, 15 articles were eligible to be included in the current systematic review (seven conducted in the US,<sup>[16,18,19,22,24,27,29]</sup> three in Canada,<sup>[23,25,30]</sup> two in Europe,<sup>[20,26]</sup> and three in Asia<sup>[17,21,28]</sup>). In total, these studies included 19,324 MetS patients and the number of participants ranged from 32 to 15,819. The ATP III criteria<sup>[3]</sup> were used in nine studies,<sup>[16,17,20-22,24,25,30]</sup> whereas harmonized criteria<sup>[35]</sup> were used in two studies;<sup>[18,23]</sup> the International Diabetes Federation (IDF) criteria<sup>[4]</sup> were used only in one study<sup>[26]</sup> and three studies did not report their definitions.<sup>[19,28,29]</sup> The duration of studies was from 4 weeks to 59 weeks. Table 1 provides detailed information about included studies.

Results from meta-analysis

Effect of cardiac rehabilitation on metabolic syndrome recovery

Eight studies<sup>[16,18,20,21,23-25,30]</sup> with 2,866 subjects evaluated the effect of the CR on the recovery from MetS by reporting the decrement in MetS prevalence. We found a significant effect of CR on decreasing MetS prevalence in the whole data set [prevalence reduction (95% CI): 0.25 (0.21, 0.3), *P* value <0.001; *P* value for heterogeneity <0.001, I-squared: 86.2%]; subgroup analysis based on duration of CR (duration <10 week as short term and duration >10 weeks as long term) showed that short-term CR administration results in a greater reduction in MetS prevalence than long-term CR [prevalence reduction rate (95% CI): 0.34 (0.26, 0.43), *P* value < 0.001and prevalence reduction rate (95% CI): 0.24 (0.18, 0.29), *P* < 0.001,respectively] [Figure 2]. The study by Brown *et al.*<sup>[24]</sup> did not provide the duration of CR; so we could not classify this study based on duration. There was no evidence of publication bias using Egger's and Begg's asymmetry tests (*P* for bias = 0.602 and 0.938, respectively). Sensitivity

analysis could not show considerable change regarding the effect of CR on MetS prevalence after excluding any of included studies.

Effect of cardiac rehabilitation on metabolic factors

The result of the overall effect and short-term effect versus long-term effect of CR on metabolic factors are summarized in Table 2.

Lipid profile

Ten studies<sup>[16-22,25-27]</sup> with 17,024 subjects evaluated the effect of CR on LDL-C, HDL-C, and TG, and 8 studies<sup>[16-18,20-22,25,26]</sup> with 16,791 subjects evaluated the role of CR on TC. CR resulted in a significant reduction in TC, LDL-C, and TG and a significant increase in the mean HDL-C levels. Subgroup analysis based on the study period showed that administered short-term CR had resulted in a greater reduction in TC and LDL-C, and a greater increase in HDL-C compared to long-term CR [Table 2]. In contrast, long-term CR had resulted in greater reduction in serum TG than short-term CR.

Blood pressure

Eight studies<sup>[16-18,20-22,25,26]</sup> with 16,791 subjectsexamined the effect of CR on SBP and DBP in MetS patients. Our meta-analysis showed that CR resulted in a significant reduction in both the mean SBP and DBP levels. Subgroup analysis based on the study period showed that effect of short-term CR on SBP and DBP had resulted in a greater reduction than long-term CR [Table 2].

Fasting blood sugar

Nine studies<sup>[16-18,20-22,25-27]</sup> with 16,791 subjects evaluated the role of CR on FBS. Overall, a meta-analysis showed the beneficial effect of CR on FBS levels. When the subgroup analysis was performed based on the duration of CR, we

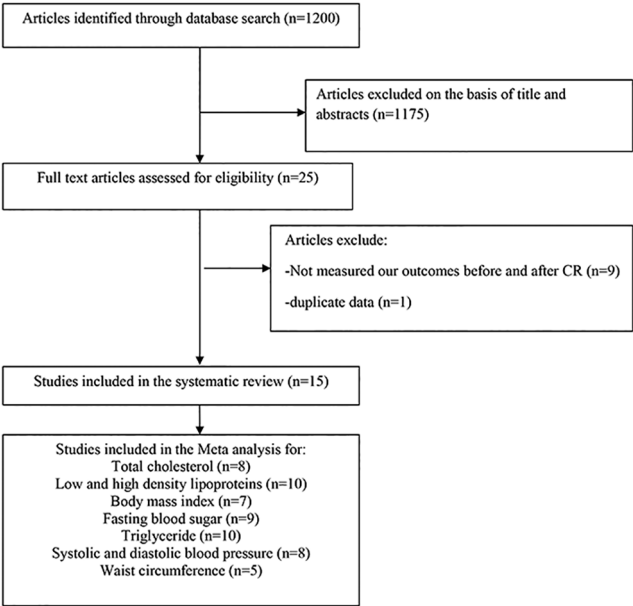


Figure 1: Summary of study selection process

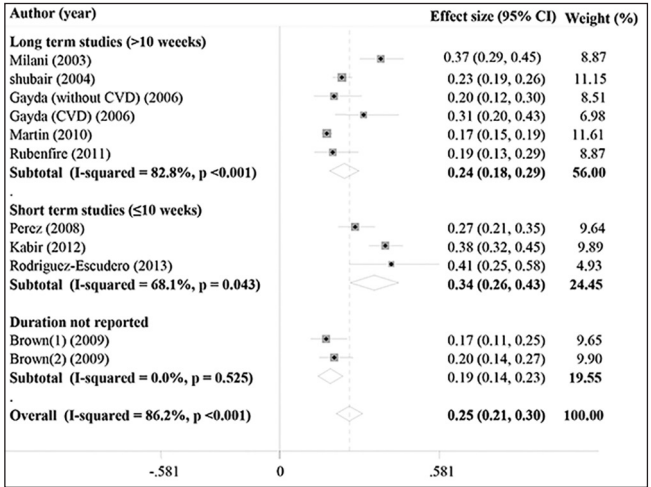


Figure 2: Forest plot of studies that evaluated the effect of CR on the prevalence reduction of MetS and subgroup analysis based on CR duration; long-term CR (>10 weeks), short-term CR (≤10 weeks); squares and diamonds represent effect size; horizontal lines show 95% confidence intervals (CIs)

**Table 1: Characteristics of studies evaluated the effect of CR on metabolic syndrome and/or its components**

Author, country, year	Study population/ gender	Age range	Duration (week)	MetS definition	Cardiac rehabilitation program
Gitt <i>et al.</i> , Germany, 2012 <sup>[26]</sup>	15,819 patients with CHD and MetS/10,694 males	64.6±11.2	4	IDF	Hospital-based CR. Gradual increase in activity levels, continuation of risk factor modifications (eg, lipid lowering), and development of maintenance programs. Intensity and modality: NR
Milani <i>et al.</i> USA, 2003 <sup>[16]</sup>	136 patients with CHD and MetS/93 Male	65.7±10.3	12	ATP III	3 sessions/week for group exercise Classes, exercise on their own 1-3 sessions/week; group and individual diet counselling; educational classes were given with regard to all aspects of CAD risk
Onishi <i>et al.</i> Japan, 2009 <sup>[17]</sup>	32 patients with history of CABG and MetS/29 Males	66±10	25	ATP III	1-2 supervised sessions/week, 60 min aerobic exercise training/session and resistance training gradually added to the exercise program at least 6 weeks after the beginning of participation; encourage to perform 2 home-based exercise training/week, 20 min/session; Intensity: Borg Scale level 11-13; Modalities: A cycle ergometer, treadmill, and walking on an in-room track as aerobic training. Sit-ups, back kicks, and front raises, squats and push-ups as resistance trainings; educational classes regarding CHD risk factors
Hariman <i>et al.</i> USA, 2006 <sup>[19]</sup>	97 patients with cardiac disease and MetS	63.9±8.2	10	NR	Hospital-based CR; 3 sessions /week, 60 min/ session; intensity: achieve target heart rates according to the Karvonen method. Modality: NR
Martin <i>et al.</i> Canada, 2010 <sup>[23]</sup>	1,232 patients with CHD and MetS	NR	12	Harmonized definition	Comprehensive CR, Modality and Intensity: NR
Perez <i>et al.</i> Spain, 2008 <sup>[20]</sup>	171 patients with CHD and MetS	55.9± 8.2	10	ATP III	Hospital-based CR; 3 sessions/week, 60 min/ session; intensity: Achieve 70% of maximum heart rate according to initial exercise test.
Kabir <i>et al.</i> Iran, 2012 <sup>[21]</sup>	234 MetS patients with CHD/115 Males	57.1± 0.6	8	ATP III	3 sessions/week; 60-90 min/session intensity: 60% and 85% of the maximum HR achieved on the exercise test. Psychological, nutritional, and smoking cessation consultations.
Rubenfire <i>et al.</i> USA, 2011 <sup>[18]</sup>	93 patients with MetS	51.3±11.8	11	Harmonized definition	3-6 sessions/week; 20-60 min/session, Intensity: 50-75% of predicted maximal heart rate based on the symptom-limited stress test. Nutritional/ behavioral counseling
Caulin-Glaser <i>et al.</i> USA, 2006 <sup>[22]</sup>	166 patients with MetS and CHD	NR	7-12	ATP III	3 sessions/week; 40 min cardiovascular exercise and 10 min stretching and strength training/ session; Intensity: 50-80% exercise capacity. Modalities: Walking, treadmill, cycling, rowing, stair climbing, elastic bands, cuff/hand weights, dumbbells, etc.
Shubair <i>et al.</i> Canada, 2004 <sup>[30]</sup>	543 patients with MetS	NR	24	ATP III	Supervised hospital-based exercise classes, dietary and psychological counseling, and nursing education and support. Modality and Intensity: NR
Brown <i>et al.</i> USA, 2009 <sup>[24]</sup>	285 patients with CHD and MetS	NR	NR	ATP III	Duration, modality and intensity: NR
Rodriguez <i>et al.</i> USA, 2013 <sup>[29]</sup>	32 patients with MetS	NR	6	NR	1-5 sessions/week; 60 min/session, Intensity: Measured based on symptom-limited stress test and included an individual target heart rate; modalities: treadmills, elliptical machines, recumbent cycles, recumbent steppers, upright cycles, stair climbers, standard weight machines, etc.
Nishihara <i>et al.</i> Japan, 2007 <sup>[28]</sup>	115 MetS patients with acute myocardial infarction	NR	12	NR	Recovery phase CR; intensity and modalities: NR
Happaneimi <i>et al.</i> USA, 2003 <sup>[27]</sup>	136 MetS patients	NR	12	ATP III	Contemporary phase 2 cardiac rehabilitation; intensity and modalities: NR



Table 1: (Continued)

LDL	Measured outcome and result								
	HDL	BMI	FBS	TG	DBP	SBP	WC	Cholesterol	MetS reduction(%)
R, ESNR <sup>[1]</sup>	I, ESNR		R, ESNR	R, ESNR	R, ESNR	R, ESNR		R, ESNR	
NSE	NSE	NSE	NSE	SR	SR	SR	SR	NSE	37
SR	NSE	SR	NSE	NSE	NSE	NSE		SR	
SR SR	SI			SR					17
SR	SI	NS	SR	SR	NS	SR	NSE	SR	27
SR	SI	SR	SR	SR	SR	SR	SR	SR	38
NSR	NSI	SR	SR	SR	SR	SR	SR	NSR	19.4
SR	SI	SR	SR	SR	NSE	SR		SR	
									23
									19
									40
		SR							
SR	SR		SR	SR					

<sup>1</sup>ESNR = Effect size not reported; R = Reduction; I = Increase; SR = Significantly reduces; SI = Significantly increased; NSE = Nonsignificant effect; NR = Not reported; MetS = Metabolic syndrome; CR = Cardiac rehabilitation; FBS = Fasting blood sugar; TC = Total cholesterol; TG = Triglyceride; LDL-C = Low density lipoprotein cholesterol; HDL-C = High density lipoprotein cholesterol; SBP and DBP = Systolic and diastolic blood pressure; BMI = Body mass index; WC = Waist circumference; MetS reduction = Decrease in metabolic syndrome patients after CR

observed that short-term CR was associated with a greater reduction in FBS as compared with long-term CR [Table 2].

Body mass index

Seven studies<sup>[16,18,20-22,25,28]</sup> with 1,055 participants were included in the meta-analysis. We found a significant effect of CR on decreasing BMI. Subgroup analysis based on CR duration showed that effect of CR on BMI was not different in short-term CR as compared with long-term CR [Table 2].

Waist circumference

Five studies<sup>[16-18,20,21]</sup> with 666 subjectsexamined the effect of CR on WC. Meta-analysis showed that CR resulted in a significant reduction in mean WC. When the subgroup analysis was performed based on duration of CR, we observed that short-term CR was associated with a greater reduction in WC as compared with long-term CR [Table 2].

Association between waist circumference and metabolic syndrome components

The result of the meta regression showed that the decrease in WC was significantly associated with decrease in LDL, SBP, DBP, FBS, and TG and a significant increase in HDL but a nonsignificant trend was found for the association of WC with TC [Table 2].

Publication bias and sensitivity analysis for studies, which explored the effect of cardiac rehabilitation on metabolic markers

We did not find any evidence of publication bias for studies assessing the effect of CR on TG, WC, and BMI [Table 2]. With regard to TC, HDL, LDL, SBP, and DBP, we reached a significant publication bias by Egger’s test ( $P = 0.018$ ,  $P < 0.001$ ,  $P = 0.002$ ,  $P = 0.038$ , and  $P = 0.012$ , respectively);

however, this was not verified by Begg’s test ( $P = 0.532$ ,  $P = 0.411$ ,  $P = 0.052$ ,  $P = 0.677$ , and  $P = 0.297$ , respectively). Sensitivity analysis showed that the effect of CR on all metabolic factors (lipid profile, FBS, BP, BMI, and WC) did not substantially modify by removing the result of a certain study.

DISCUSSION

The present systematic review and meta-analysis could provide evidences about the favorable effect of CR with regard to not only MetS but also its entire individual components and related metabolic or anthropometric markers. Based on our results, adherence to CR can result in 25% decrease in the proportion of MetS patients. Moreover, short-term CR ( $\leq 10$  weeks) might result in a greater reduction in MetS prevalence (about 34%), TC, LDL-C, FBS, DBP, SBP, WC, and greater increase in HDL-C as compared with long-term CR. On the other hand, effect of CR ( $> 10$  weeks) on TG was shown to be greater in long-term period than short-term CR. The role of different components of CR from exercise to diet and consultation among MetS patients are investigated separately in various studies but to the best of our knowledge, this is the first meta-analysis that has examined the effect of CR on patients with CVDs and MetS.

CR is one of the most known and well-studied interventions, which has been shown to be associated with decreased morbidity and mortality of CVD,<sup>[36]</sup> On the other hand, MetS among CVD patients is associated with higher risk of mortality and morbidity.<sup>[37]</sup> Exercise and diet are perceived not only as the key components of the treatment and prevention strategies in patients

Table 2: Meta-analysis results for the effect of cardiac rehabilitation (CR) on metabolic factors

Metabolic factors	Number of studies	Participants	Meta analysis			Heterogeneity		Publication bias		Meta regression (WC) <sup>1</sup>	
			Mean Difference	Confidence Interval	<i>P</i> value	I-Square%	Cochrane Q test ( <i>P</i> value)	Egger's test ( <i>P</i> value)	Begg's test ( <i>P</i> value)	β	<i>P</i> value
TC											
Short term <sup>2</sup>	4	16791	−20.63	(−37.20, −4.70)	0.015	98.6	<0.001	0.018	0.532	4.81	0.116
Long term <sup>3</sup>	4		−9.48	(−16.88, −2.11)	0.012	72.3	0.006				
Overall	8		−15.06	(−26.88, −3.24)	0.012	98.1	<0.001				
LDL-C											
Short term	5	17024	−15.96	(−8.03, −3.89)	0.01	97.2	<0.001	0.002	0.052	4.32	0.085
Long term	5		−5.37	(−9.24, −1.51)	0.006	30.9	0.204				
Overall	10		−11.93	(−21.30, −2.56)	0.013	97/4	<0.001				
HDL-C											
Short term	5	17024	2.35	(0.69, 4.01)	0.005	89.7	<0.001	<0.001	0.411	−0.83	0.003
Long term	5		2.12	(1.42, 2.82)	<0.001	19.6	0.280				
Overall	10		2.13	(1.17, 3.10)	0.001	86	<0.001				
BMI											
Short term	3	1055	−0.53	(−1.02, −0.03)	0.037	94.5	<0.001	0.443	0.322	−	−
Long term	4		−0.53	(−0.77, −0.28)	<0.001	79.9	0.001				
Overall	7		−0.52	(−0.74, −0.3)	<0.001	87.5	<0.001				
FBS											
Short term	4	16927	−6.49	(−6.93, −6.06)	<0.001	0%	0.940	0.240	0.655	1.65	0.062
Long term	5		−4.28	(−6.65, −1.90)	<0.001	0%	0.498				
Overall	9		−6.42	(−6.85, −5.99)	<0.001	0%	0.533				
TG											
Short term	5	17024	−25.18	(−37.00, −13.36)	<0.001	94	<0.001	0.852	0.325	9.72	0.033
Long term	5		−31.36	(−47.25, −15.46)	<0.001	21.1	0.275				
Overall	10		−27.45	(−36.92, −17.98)	<0.001	86.4	<0.001				
DBP											
Short term	4	16791	−2.91	(−4.42, −1.40)	<0.001	85	<0.001	0.012	0.297	0.84	0.089
Long term	4		−2.12	(−3.79, −0.46)	<0.003	68.8	0.275				
Overall	8		−2.53	(−3.64, −1.41)	<0.001	82.8	<0.001				
SBP											
Short term	4	16791	−7.12	(−9.77, −4.45)	0.003	82	0.001	0.038	0.677	1.95	0.05
Long term	4		−5.25	(−8.66, −1.84)	<0.001	66.9	0.017				
Overall	8		−6.20	(−8.41, −3.99)	<0.001	81.8	<0.001				
WC											
Short term	2	666	−2.43	(−4.39, −0.47)	0.015	94	<0.001	0.747	0.851	−	−
Long term	3		−1.94	(−2.65, −1.23)	<0.001	44.6	0.144				
Overall	5		−2.25	(−3.15, −1.35)	<0.001	84.9	<0.001				

TC = Total cholesterol; LDL = Low density lipoprotein; HDL = High density lipoprotein; FBS = Fasting blood sugar; TG = Triglyceride; DBP = Diastolic blood pressure; SBP = Systolic blood pressure; WC = Waist circumference; <sup>1</sup>The association between the magnitude of reduction in waist circumference and the between-studies heterogeneity using meta-regression; <sup>2</sup>≤10 weeks; <sup>3</sup>>10 weeks

with MetS or CVD<sup>[10,38,39]</sup> but also as essential parts of CR.<sup>[11]</sup> According to a systematic review done by Pattyn *et al.*, there is a beneficial effect of the dynamic endurance exercise on individual components of MetS, namely, WC, HDL-C, LDL-C, SBP, DBP, and BMI but exercise has no significant effect on TG and FBS.<sup>[38]</sup> Additionally, results from a meta-analysis on the Mediterranean diet among MetS patients showed a beneficial effect of diet on HDL-C, TG, WC, SBP, DBP, and glucose.<sup>[40]</sup> Moreover the result of a recent meta-analysis performed by Yamaoka and Tango revealed the favorable effect of lifestyle modification (diet and exercise/diet consultation) on all components of

MetS except HDL.<sup>[10]</sup> Taken together, each of these studies indicate the beneficial effect of different components of CR on several metabolic factors but not on all factors, which is achievable by the implication of CR as indicated in our meta-analysis.

At present, the prevalence of MetS has dramatically increased parallel to obesity<sup>[6]</sup> and as it is well-known that abdominal obesity is one of the most important factors related to MetS and also the appearance of its individual components because of its major role in glucose and lipid metabolism.<sup>[41,42]</sup> The present meta-analysis also indicates

that a decrease in WC is significantly associated with improvement in most components of MetS including LDL-C, HDL-C, TG, blood pressure (BP), and FBS. In line with our study, a decrease in WC is associated with increase in HDL-C and decrease in DBP in a meta-analysis done by Pattyn *et al.*<sup>[38]</sup> Therefore, our result may show that the effect of CR on WC may be the cause of its favorable effect on other MetS components.

Although the significant effect of CR on MetS and its related markers was shown in short- and long-term studies, we found that short-term CR resulted in greater effects on MetS and all its components except for TG compared with long-term CR. However, the included studies did not mention the prevalence of adherence to CR; the result may be related to a decrease in adherence to CR in long-term interventions<sup>[43]</sup> and as Dimatteo *et al.* mentioned in their meta-analysis, poor adherence to treatment may cause an impact on clinical outcome.<sup>[44]</sup>

Certain limitations of this study should be considered while interpreting our results. First, MetS has several definitions and due to the small number of study groups and inadequate data, a subgroup analysis based on definition was not possible. However, this may be acceptable because the parameters of its different definitions are generally the same. Second, none of our included studies had control MetS subjects for whom the CR was not implemented. Finally, some subgroup analysis such as sex-based differences due to inadequate data could not be performed.

## CONCLUSION

In conclusion, CR can be considered as a treatment tool in MetS patients, especially for those with CVDs. Although short-term CR is associated with greater improvement in most MetS components and MetS prevalence as compared to long-term CR, effect of long-term CR remains significant for MetS reduction rate and all its related metabolic or anthropometric factors. Regarding the favorable effect of CR on cardiometabolic components in MetS patients, further studies are required to investigate whether CR can affect the long-term prognosis of this group of patients.

**Financial support and sponsorship**  
Nil.

## Conflicts of interest

There are no conflicts of interest.

## AUTHOR'S CONTRIBUTION

MS contributed in the conception and design of the work, drafting and revising the draft, conducting the study,

approving the final version of the manuscript, and agreed with all aspects of the work.

AS-A contributed in the conception of the work, revising the draft, analyzing and interpreting of data, approving the final version of the manuscript, and agreed with all aspects of the work.

ZK contributed in the conception of the work, drafting and revising the draft, data acquisition, approving the final version of the manuscript, and agreed with all aspects of the work.

HS-K contributed in the conception of the work, data acquisition, approving the final version of the manuscript, and agreed with all aspects of the work.

RH contributed in the conception of the work, conducting the study, approving the final version of the manuscript, and agreed with all aspects of the work.

HR contributed in the conception and design of the work, conducting the study, drafting the draft, approving the final version of the manuscript, and agreed with all aspects of the work.

## REFERENCES

1. Eckel RH, Grundy SM, Zimmet PZ. The metabolic syndrome. *Lancet* 2005;365:1415-28.
2. Consultation W. Definition, Diagnosis and Classification of Diabetes Mellitus and its Complications. Geneva, Switzerland: World Health Organization; 1999. p. 1-59.
3. Expert Panel on Detection, Evaluation, and Treatment of High Blood Cholesterol in Adults. Executive summary of the third report of The National Cholesterol Education Program (NCEP) Expert panel on detection, evaluation, and treatment of high blood cholesterol in adults (Adult Treatment Panel III). *JAMA* 2001;285:2486-97.
4. Alberti G, Zimmet P, Shaw J, Grundy S. International Diabetes Federation 2006: The IDF consensus worldwide definition of the metabolic syndrome. Available from [http://www.idf.org/webdata/docs/IDF\\_Meta\\_def\\_final.pdf](http://www.idf.org/webdata/docs/IDF_Meta_def_final.pdf). [Last accessed on 2015 Aug 25].
5. Ford ES, Giles WH, Dietz WH. Prevalence of the metabolic syndrome among US adults: Findings from the third National Health and Nutrition Examination Survey. *JAMA* 2002;287:356-9.
6. Zimmet P, Alberti K, Shaw J. Global and societal implications of the diabetes epidemic. *Nature* 2001;414:782-7.
7. Savage PD, Banzer JA, Balady GJ, Ades PA. Prevalence of metabolic syndrome in cardiac rehabilitation/secondary prevention programs. *Am Heart J* 2005;149:627-31.
8. Lakka HM, Laaksonen DE, Lakka TA, Niskanen LK, Kumpusalo E, Tuomilehto J, *et al.* The metabolic syndrome and total and cardiovascular disease mortality in middle-aged men. *JAMA* 2002;288:2709-16.
9. Cameron AJ, Shaw JE, Zimmet PZ. The metabolic syndrome: Prevalence in worldwide populations. *Endocrinol Metab Clin North Am* 2004;33:351-75, table of contents.

10. Yamaoka K, Tango T. Effects of lifestyle modification on metabolic syndrome: A systematic review and meta-analysis. *BMC Med* 2012;10:138.
11. Balady GJ, Williams MA, Ades PA, Bittner V, Comoss P, Foody JM, *et al.*; American Heart Association Exercise, Cardiac Rehabilitation, and Prevention Committee, the Council on Clinical Cardiology; American Heart Association Council on Cardiovascular Nursing; American Heart Association Council on Epidemiology and Prevention; American Heart Association Council on Nutrition, Physical Activity, and Metabolism; American Association of Cardiovascular and Pulmonary Rehabilitation. Core Components of Cardiac Rehabilitation/Secondary Prevention Programs: 2007 Update: A Scientific Statement From the American Heart Association Exercise, Cardiac Rehabilitation, and Prevention Committee, the Council on Clinical Cardiology; the Councils on Cardiovascular Nursing, Epidemiology and Prevention, and Nutrition, Physical Activity, and Metabolism; and the American Association of Cardiovascular and Pulmonary Rehabilitation. *Circulation* 2007;115:2675-82.
12. Basati F, Sadeghi M, Kargarfard M, Yazdekhesti S, Golabchi A. Effects of a cardiac rehabilitation program on systolic function and left ventricular mass in patients after myocardial infarction and revascularization. *J Res Med Sci* 2012;17:S28-32.
13. Golabchi A, Basati F, Kargarfard M, Sadeghi M. Can cardiac rehabilitation programs improve functional capacity and left ventricular diastolic function in patients with mechanical reperfusion after ST elevation myocardial infarction? A double-blind clinical trial. *ARYA Atheroscler* 2012;8:125-9.
14. Wenger NK, Froelicher ES, Smith L, Ades PA, Berra K, Blumenthal JA, *et al.* Cardiac Rehabilitation. Clinical Practice Guideline No. 17. Rockville, MD: US Department of Health and Human Services, Public Health Service, Agency for Health Care Policy and Research, and the National Heart, Lung, and Blood Institute AHCPR Publication; 1995.
15. Mostafavi F, Ghofranipour F, Feizi A, Pirzadeh A. Improving physical activity and metabolic syndrome indicators in women: A transtheoretical model-based intervention. *Int J Prev Med* 2015;6:28.
16. Milani RV, Lavie CJ. Prevalence and profile of metabolic syndrome in patients following acute coronary events and effects of therapeutic lifestyle change with cardiac rehabilitation. *Am J Cardiol* 2003;92:50-4.
17. Onishi T, Shimada K, Sunayama S, Ohmura H, Sumide T, Masaki Y, *et al.* Effects of cardiac rehabilitation in patients with metabolic syndrome after coronary artery bypass grafting. *J Cardiol* 2009;53:381-7.
18. Rubenfire M, Mollo L, Krishnan S, Finkel S, Weintraub M, Grack T, *et al.* The metabolic fitness program: Lifestyle modification for the metabolic syndrome using the resources of cardiac rehabilitation. *J Cardiopulm Rehabil Prev* 2011;31:282-9.
19. Hariman LM, Stachowiak A, Zajeski S, Hariman RJ. PR\_026: Does Cardiac Rehabilitation Improve the Cardiac Profile of Patients With Metabolic Syndrome? *Arch Phys Med Rehabil* 2006;87:e9.
20. Pérez IP, Zapata MA, Cervantes CE, Jarabo RM, Grande C, Plaza R, *et al.* Cardiac rehabilitation programs improve metabolic parameters in patients with the metabolic syndrome and coronary heart disease. *J Clin Hypertens (Greenwich)* 2010;12:374-9.
21. Kabir A, Sarrafzadegan N, Amini A, Aryan RS, Kerahroodi FH, Rabiei K, *et al.* Impact of cardiac rehabilitation on metabolic syndrome in Iranian patients with coronary heart disease: The role of obesity. *Rehabil Nurs* 2012;37:66-73.
22. Caulin-Glaser T, Falko JM. Effects of cardiac rehabilitation on lipoprotein abnormalities in patients with Type 2 diabetes mellitus and metabolic syndrome. *Future Lipidol* 2006;1:65-73.
23. Martin BJ, Arena R, Hauer T, Austford LD, Aggarwal S, Stone JA. The prognostic importance of metabolic syndrome in a large cardiac rehabilitation cohort. *Circulation* 2011;124:A13818.
24. Brown TM, Sanderson BK, Bittner V. Drugs are not enough: The metabolic syndrome — A call for intensive therapeutic lifestyle change. *J Cardiometab Syndr* 2009;4:20-5.
25. Gayda M, Brun C, Juneau M, Levesque S, Nigam A. Long-term cardiac rehabilitation and exercise training programs improve metabolic parameters in metabolic syndrome patients with and without coronary heart disease. *Nutr Metab Cardiovasc Dis* 2008;18:142-51.
26. Gitt A, Jannowitz C, Karoff M, Karmann B, Horack M, Völler H. Treatment patterns and risk factor control in patients with and without metabolic syndrome in cardiac rehabilitation. *Vasc Health Risk Manag* 2012;8:265-74.
27. Haapaniemi SS, Bonzheim KA, Franklin BA, Salmon RD, Gordon NF. Clinical effectiveness of a contemporary cardiac rehabilitation program in patients with the metabolic syndrome. *Med Sci Sport Exer* 2003;35(Suppl 1):S233.
28. Nishihira M, Higo T, Noguchi T, Kawakami R, Aihara N, Ohara T, *et al.* PJ-117 is there any difference in the effects of cardiac rehabilitation between post-myocardial infarction patients with and without metabolic syndrome? (Exercise test/Cardiac rehabilitation-6, The 71<sup>st</sup> Annual Scientific Meeting of the Japanese Circulation Society. *Circ J* 2007;71:500-1.
29. Rodriguez-Escudero JP, Somers VK, Heath AL, Thomas RJ, Squires RW, Sochor O, *et al.* Effect of a lifestyle therapy program using cardiac rehabilitation resources on metabolic syndrome components. *J Cardiopulm Rehabil Prev* 2013;33:360-70.
30. Shubair MM, Kodis J, McKelvie RS, Arthur HM, Sharma AM. Metabolic profile and exercise capacity outcomes: Their relationship to overweight and obesity in a Canadian cardiac rehabilitation setting. *J Cardiopulm Rehabil* 2004;24:405-13.
31. DerSimonian R, Laird N. Meta-analysis in clinical trials. *Control Clin Trials* 1986;7:177-88.
32. Higgins J, Thompson SG. Quantifying heterogeneity in a meta-analysis. *Stat Med* 2002;21:1539-58.
33. Egger M, Davey Smith G, Schneider M, Minder C. Bias in meta-analysis detected by a simple, graphical test. *BMJ* 1997;315:629-34.
34. Sterne JA, Egger M, Smith GD. Systematic reviews in health care: Investigating and dealing with publication and other biases in meta-analysis. *BMJ* 2001;323:101-5.
35. Alberti KG, Eckel RH, Grundy SM, Zimmet PZ, Cleeman JI, Donato KA, *et al.*; International Diabetes Federation Task Force on Epidemiology and Prevention; National Heart, Lung, and Blood Institute; American Heart Association; World Heart Federation; International Atherosclerosis Society; International Association for the Study of Obesity. Harmonizing the metabolic syndrome: A joint interim statement of the international diabetes federation task force on epidemiology and prevention; National Heart, Lung, and Blood Institute; American Heart Association; World Heart Federation; International Atherosclerosis Society; and International Association for the Study of Obesity. *Circulation* 2009;120:1640-5.
36. Taylor RS, Brown A, Ebrahim S, Jolliffe J, Noorani H, Rees K, *et al.* Exercise-based rehabilitation for patients with coronary heart disease: Systematic review and meta-analysis of randomized controlled trials. *Am J Med* 2004;116:682-92.
37. Gami AS, Witt BJ, Howard DE, Erwin PJ, Gami LA, Somers VK, *et al.* Metabolic Syndrome and risk of incident cardiovascular events and death: A systematic review and meta-analysis of longitudinal studies. *J Am Coll Cardiol* 2007;49:403-14.



38. Pattyn N, Cornelissen VA, Eshghi SR, Vanhees L. The effect of exercise on the cardiovascular risk factors constituting the metabolic syndrome: A meta-analysis of controlled trials. *Sports Med* 2013;43:121-33.
39. Rees K, Dyakova M, Ward K, Thorogood M, Brunner E. Dietary advice for reducing cardiovascular risk. *Cochrane Database Syst Rev* 2013;3:CD002128.
40. Kastorini CM, Milionis HJ, Esposito K, Giugliano D, Goudevenos JA, Panagiotakos DB. The effect of Mediterranean diet on metabolic syndrome and its components: A meta-analysis of 50 studies and 534,906 individuals. *J Am Coll Cardiol* 2011; 57:1299-313.
41. Hajer GR, van Haeften TW, Visseren FL. Adipose tissue dysfunction in obesity, diabetes, and vascular diseases. *Eur Heart J* 2008;29:2959-71.
42. Sadeghi M, Ghashghaei FE, Rabiei K, Golabchi A, Noori F, Baboli MT, *et al.* Does significant weight reduction in men with coronary artery disease manage risk factors after cardiac rehabilitation program? *J Res Med Sci* 2013;18:956-60.
43. Sluijs E, Knibbe J. Patient compliance with exercise: Different theoretical approaches to short-term and long-term compliance. *Patient Educ Couns* 1991;17:191-204.
44. Dimatteo MR, Giordani PJ, Lepper HS, Croghan TW. Patient adherence and medical treatment outcomes: A meta-analysis. *Med Care* 2002;40:794-811.