

# The Potential Genotoxic Effects of Antineoplastic Drugs in Occupationally Exposed Nurses

HAIDY M. FAKHER<sup>1</sup>, ESLAM S. METWALLY<sup>2</sup>, RABAB SH. EL-SHAFFEY<sup>1</sup>

<sup>1</sup>Lecturer, Forensic Medicine & Clinical Toxicology Department; Faculty of Medicine, Benha University, Egypt

<sup>2</sup>Associate Professor, Forensic Medicine & Clinical Toxicology Department; Faculty of Medicine, Benha University, Egypt

## Abstract

**Background:** Antineoplastic drugs are commonly used globally. They directly interact with the tumor cell deoxyribonucleic acid and inhibit their growth. These actions are non-selective affecting both tumor cells and healthy cells producing toxic effects. The present study was designed to evaluate oxidative stress and genotoxic effects of antineoplastic drugs in occupationally exposed nurses under routine working conditions.

**Methods:** The studied groups included 28 nurses working in Hematology and Oncology unit, Benha University Hospitals and 20 non exposed subjects that work in academic jobs in Benha Faculty of Medicine, matched in age, gender & socioeconomic status. Malondialdehyde (MDA) & reduced glutathione (GSH) were measured for all participants as markers of oxidative stress. Extent of DNA damage in leucocytes was also evaluated by comet assay as a biomarker of genotoxicity.

**Results:** There were a significant increase in MDA & reduction in GSH in occupationally exposed subjects than control. Also, extent of DNA damage in the lymphocytes of occupationally exposed participants has a high significance than the controls. The work duration and age had a significant impact on degree of DNA damage.

**Conclusion:** occupationally exposed nurses to antineoplastic agents are at greater risk of oxidative stress with consequent DNA damage and potential genotoxic damage.

**Keywords:** Antineoplastic, Oxidative stress, Comet assay, DNA damage,.

How to cite this article: Fakher HM, Metwally ES, EL-Shafey RSH. The Potential Genotoxic Effects of Antineoplastic Drugs in Occupationally Exposed Nurses. *Asia Pac J Med Toxicol* 2020; 9(2):60-66.

## INTRODUCTION

Antineoplastic drugs are highly cytotoxic agents used in chemotherapy but while their usefulness is undeniable, they have been identified as potentially dangerous to occupational health care professionals (1).

The International Agency for Research on Cancer (IARC) has evaluated several antineoplastic drugs that inhibit tumor growth by disrupting cell division and killing growing cells, some of which were included as human carcinogens in Group1 (2). There are more than 10 million cancer cases around the globe. WHO estimates that the disease will reach more than 13 million by 2030. One of the cancer treatment routes is the use of cytotoxic compounds (3).

Exposure to antineoplastic drugs may occur during production, transportation and delivery and, of course, when used in health care facilities, either in hospitals or in the home, or even when disposed as waste materials. Different routes of exposure to pharmacists, pharmacy technicians and nurses who prepare or administer antineoplastic drugs as through inhalation, dermal absorption or less probably by ingestion (hand-mouth exposure route) (4, 5).

Occupational exposures to chemicals are well recognized and regulated. However, families of workers may suffer second-hand exposure from contaminated clothes, placing them at greater risk than the general population. Pregnant women and children are especially sensitive subgroups in this scenario (6).

Anticancer drugs can generate reactive oxygen species (ROS) which leads to mutations and DNA damage. Overproduction of ROS can affect lipids, protein, and DNA of the cell and lead to destruction of cell structure and function (7).

Several cytogenetic methods such as the analysis of chromosomal aberrations, sister chromatid exchanges, and micronuclei in peripheral blood lymphocytes had been used frequently to assess the potential genotoxic effect of anticancer agents in occupationally exposed workers (8).

The alkaline single cell gel electrophoresis technique or COMET assay is a relatively new molecular assay which measures strand breaks incomplete excision repair sites, alkali labile sites and cross-linking, in individual cells (9).

The rationale of the present study was to assess possible genotoxicity of occupational exposure to antineoplastic drugs

\*Correspondence to: Dr. Haidy M. Fakher, Lecturer, <sup>1</sup>Forensic Medicine & Clinical Toxicology Department, Faculty of Medicine, Benha University, Egypt. Email: aafakher@gmail.com, Tell : 00201027759943

and its correlation with oxidative stress in occupationally exposed nurses.

## METHODS

### Study setting and subjects

This was a prospective comparative cross-sectional study conducted in Hematology and Oncology Unit, Internal Medicine Department, Faculty of Medicine, Benha University Hospitals, Egypt after obtaining the approval from the Research Ethics Committee in Benha Faculty of Medicine with number (RC1-1-2020). Data was collected over a period of 2 months (from 1<sup>st</sup> March 2020 till 30<sup>th</sup> April 2020). An informed written consent (in Arabic language) was obtained from the participants. It included their personal data and details about the study as title, objectives, methodology, expected benefits and risks, and confidentiality of data.

### Data Collection

Convenient sampling was conducted on twenty eight nurses occupationally exposed at Hematology & Oncology Unit. **Inclusion criteria:** they were working at oncology unit for 2 to 7 years, non-alcoholic, non-smokers, had not been subjected to diagnostic X-ray examinations during the year before the beginning of this study. They were not taking oral contraceptive pills during the study period. While, twenty female employees as control group were selected from those working in academic institutions (Benha faculty of medicine). They were not exposed to antineoplastic drugs. They were matched with the study group for age & other inclusion criteria.

The checklist was performed to determine the personal data, occupational and medical history of the participants under this study including age, type and place of work, duration of work, personal protective equipment usage such as masks, gloves and lab-coat, history of chronic diseases and exposure to chemotherapy or radiotherapy and medicine usage.

### Laboratory investigations

Peripheral blood samples from exposed and control participants were collected in the morning via venipuncture; the sample was divided into two parts: one kept in a heparinized tube and immediately sent to the laboratory where the comet assay was conducted, at room temperature and protected from light., and the other into a plain tube & left to coagulate at room temperature and centrifuged for 15 minutes at 986 g. The clear non-hemolyzed supernatant serum was rapidly collected, and stored at (-80°C) until assessment of oxidative stress parameters. **Malondialdehyde (MDA)** which is a lipid peroxidation marker in lymphocytes was used to determine the thiobarbituric acid reactive substances (TBARS) amount formed during lipid hydroperoxide decomposition by following absorption in a Beckman DU-7 spectrophotometer at 532 nm (10). **Reduced glutathione (GSH)** was detected by measuring in quartz cuvettes by a fluorimeter set at 350 nm excitation and 420 nm emission wavelengths according to the spectrofluorometric method (11). **The comet assay** was done as frosted microscopic slides were cleaned with ethanol and dipped into 1% normal melting point agarose (NMA). Twenty µL of blood cell suspensions is combined with 0.7% low melt

agarose(LMA) 80 µL. Vortex and 30 µL of mixed agarose/cell suspension were mixed and put on the microscopic slides. The slides were eventually covered with the cover slip, left on an ice-cooled metal surface for 10 minutes and then deposited 100 µL of LMA on the previous layer of LMA. After 5 minutes, slides were dipped for an hour in an alkaline lysis solution, then removed and gently washed with deionized water. Slides were placed horizontally in an electrophoresis tank filled with an electrolysis buffer (previously set at 4 ° C) and kept in the refrigerator for 30 minutes at 4 ° C. Electrophoresis parameters were done for constant conditions of 0.8V/ and CM300 mA. Slides were set for 5 minutes in neutralization buffer After 30 minutes of electrophoresis, and then washed with deionized water. Slides were stained with Ethidium bromide solution for 5 minutes (12, 13). For Comet capture and analysis, at 400 magnification, a total of 50 randomly collected comets from each slide were analyzed using an epifluorescence microscope (Zeiss, Germany) linked to an image processing device via a black and white camera. (Comet Assay II; Perceptive Instruments Ltd, UK). A computerized image analysis system was used to acquire images, calculate the integrated intensity profile for each cell, estimate the components of the comet cells and assess the range of derived parameters. The following comet parameters were evaluated for the quantification of DNA damage: tail length, percentage of DNA in tail and tail moment. Tail length (i.e. DNA migration length) is directly related to the size of the DNA fragment and shown in micrometers. It was measured from cell core. Calculated as (tail length percentage of DNA in tail)/1.

### Statistical analysis

Using SPSS version 20 software (SpssInc, Chicago, ILL Company) the data collected were tabulated and analyzed. Categorical data were presented as numbers and percentages, and they were analyzed using Chi square (I<sup>2</sup>). Quantitative data for normality were tested using the Shapiro-Wilks method, assuming normality at P>0.05. Normally distributed variables were expressed as mean ± standard deviation and analyzed by student "t" for 2 independent groups, while non-parametric data were presented as median and inter-quartile range (IQR), and analyzed by Mann Whitney U test. Non parametric correlations were assessed by Spearman's correlation coefficient (rho). P ≤0.05 was considered significant.

## RESULTS

The main characteristics of the study and control groups are presented in Table 1. All subjects were nonsmokers, with no history of cancer or radiation exposure. The nurses were working in well ventilated rooms with fans according to the information obtained from the questionnaire. There was no statistical significant difference between study and control groups regarding age and residence. All the subjects exposed had been in touch with antineoplastic drugs 5.0±2.0 years. During preparation and administration of antineoplastic drugs, 50% of studied nurses wore gloves and face masks. Regarding risky behavior (eat and drink during work), 50% of studied nurses were accustomed to eat and drink during work.

**Table 1. Comparison between the study and control groups regarding demographic data.**

Variable	Study group (n=28)		Control group (n=20)		P
	Mean±SD	Range	Mean±SD	Range	
Age (ys)	39.8±9.9	25-53	38.7±9.8	25-52	0.71
Residence	No.	%	No.	%	P
	Urban	12 42.9	10 50.0		
	Rural	16 57.1	10 50.0		

Student "t" test was used

**Table 2. Comparison between the study and control groups regarding Tail length (µm), Tail moment, MDA, Glutathione reductase.**

Variable	Study group (n=28)			Control group (n=20)			P
	Mean	± SD	Range	Mean	± SD	Range	
Tail length (µm)	8.69	1.84	5.14-11.95	2.06	0.65	0.91-3.68	<0.001
Tail moment	1.62	0.49	0.81-2.2	0.38	0.20	0.1-0.66	<0.001*
MDA	12.56	0.65	11.57-13.57	10.08	0.43	9.56-10.85	<0.001*
Glutathione reductase	5.95	0.34	5-6.53	7.19	0.29	6.85-7.65	<0.001

\*\*ZMWU= Z value of Mann Whitney U test was used

Compared with occupationally exposed subjects, the mean values of tail length and moment were significantly higher than the controls. Regarding the oxidative stress assessment, there was a highly significant increase in mean values of MDA. While, there was a highly significant decrease in mean values of Glutathione reductase in the study group compared with control group (Table 2). According to age of the control group, there was non-significant correlation between it and studied parameters (Table 3).

The study illustrated the influence of the duration of occupational exposure to antineoplastic drugs among the exposed nurses on the level of chromosome damage, as there was a significant positive correlation with DNA aberrations which include tail length and tail moment. Also, there was a significant positive correlation with MDA. Likewise, the duration of exposure in work places negatively correlated with glutathione reductase level (Figure 1).

Table (4) revealed that there was a statistical high significant increase of the level of chromosome damage among the occupationally exposed nurses with risky behavior. Also, there was high significant increase of MDA level. Moreover, there was statistical significant decrease regarding glutathione reductase level.

Since age and work duration is highly correlated, analysis of correlation indicated the influence of age on the level of chromosome damage among exposed nurses which revealed a statistical high significant increase in tail length and tail moment.

Moreover, there was a high significant increase of MDA level and statistical significant decrease regarding glutathione reductase level (Figure 2, 3).

Examination of peripheral blood lymphocytes by comet assay revealed normal intact nuclei in control group while there was degree of damage depended on duration of work of exposed nurses (Figure 4).

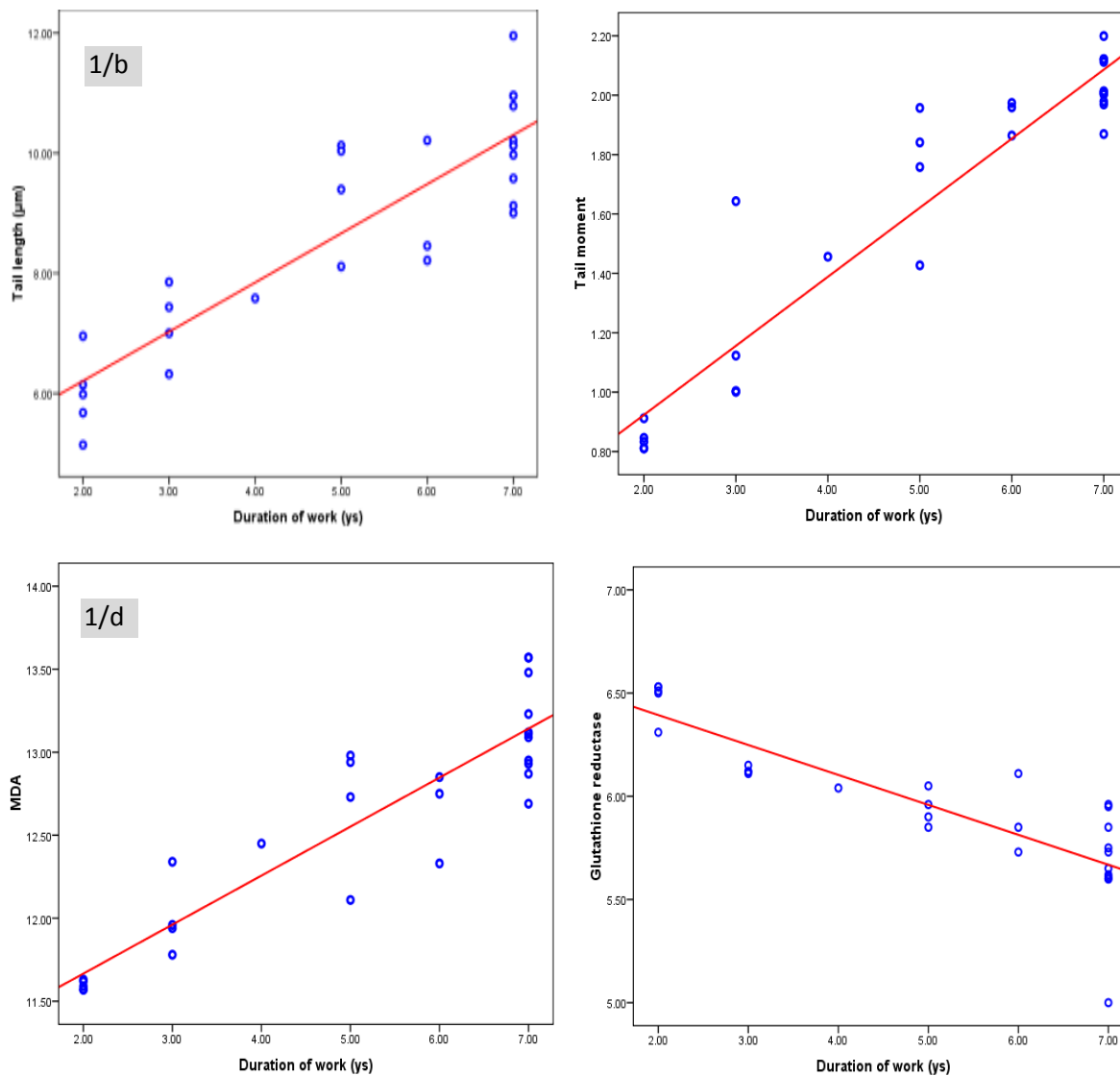
### DISCUSSION

Antineoplastic drugs consist of a clustered group of chemicals popularly used for cancer treatment and other non-neoplastic diseases. These drugs have proven to be carcinogenic, mutagenic, and teratogenic (14, 15). The risks of side effects from antineoplastic drugs in treating patients with cancer are often outweighed by the benefits of the drugs and are often avoided, reduced or decreased by different treatment steps. Nevertheless, these medications are exposed to nurses and pharmacists in a wide-spectrum subtherapeutic concentration with long cumulative duration, of uncertain biological consequences (16).

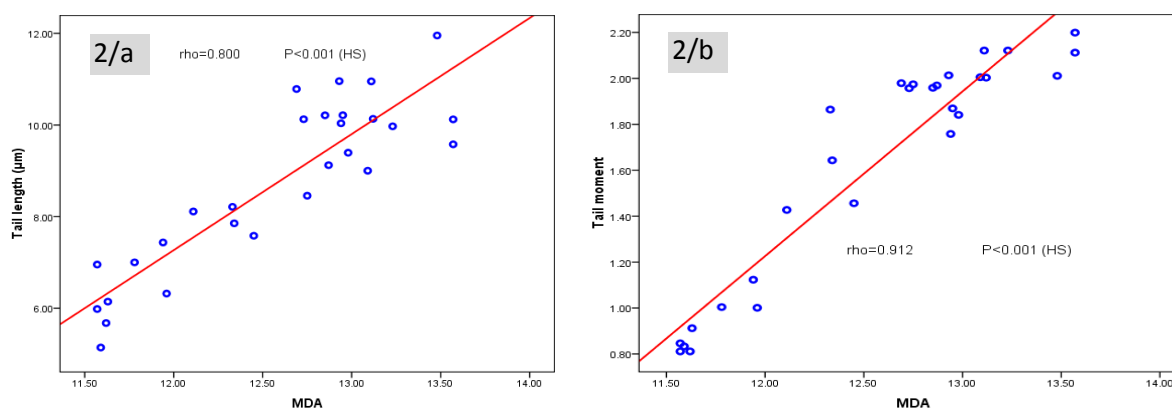
**Table 3. Relation between age of control group and Tail length (µm), Tail moment, MDA, Glutathione reductase.**

With	Age of control group (N=20)	
	rho	P
Tail length (µm)	0.062	0.79
Tail moment	0.096	0.68
MDA	0.244	0.30
Glutathione reductase	-0.081	0.91

rho: Spearman's correlation coefficient



**Fig. 1.** Scatter graph showing significant positive correlation between duration of work and tail length, tail moment, MDA and negative correlation with glutathione reductase in the study group nurses.

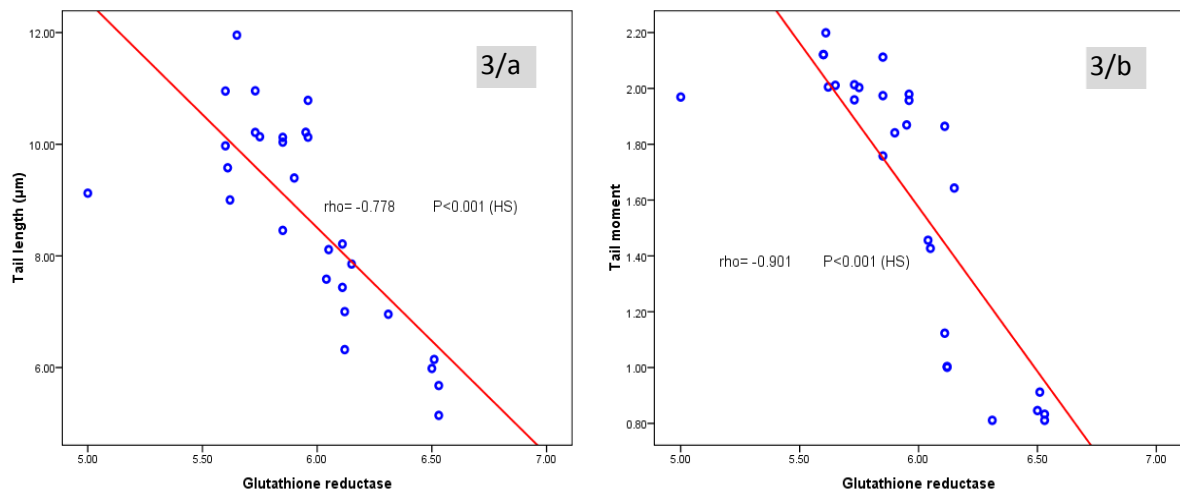


**Fig. 2.** Scatter graph showing correlation between MDA level and tail length and tail moment in the study group nurses.

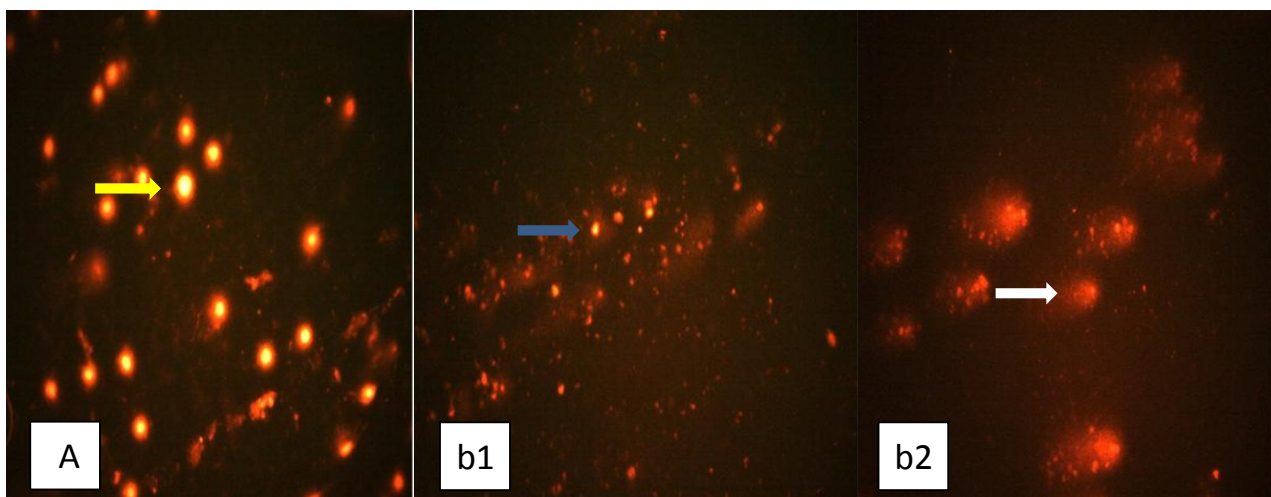
**Table 4. Relation between the studied markers according to risky behavior (eat and drink during work) of the study group nurses.**

Variable	Risky behavior						P
	No (n=14)			Yes (n=14)			
	Mean	± SD	Range	Mean	± SD	Range	
Tail length (µm)	7.30	1.49	5.14-10.78	10.07	0.86	8.46-11.95	<0.001
Tail moment	1.26	0.45	0.81-1.98	1.99	0.11	1.76-2.2	<0.001*
MDA	12.03	0.44	11.57-12.87	13.09	0.27	12.73-13.57	<0.001*
Glutathione reductase	6.14	0.38	5-6.53	5.76	0.13	5.6-5.96	0.002

\* ZMWU= Z value of Mann Whitney U test was used



**Fig. 3.** Scatter graph showing correlation between glutathione reductase level and tail length and tail moment in the study group nurses.



**Fig. 4.** (A) Photomicrograph of peripheral blood lymphocytes of the control group with intact nuclei (yellow arrow), (b1) photomicrograph of peripheral blood lymphocytes of occupationally exposed nurses [2 years work duration] show low degree of damage (blue arrow), (b2) photomicrograph of peripheral blood lymphocytes of occupationally exposed nurses [7 years work duration] show high degree of damage (white arrow) (stained with 20µg/ml ethidium bromide with 400X).



As regard oxidative stress parameters, the current study revealed a significant increase in MDA, the chief marker of lipid peroxidation. While, there was a significant reduction in glutathione reductase (GSH), as a marker of antioxidants, in occupationally exposed nurses as compared to non-exposed control group.

These results were in line with the study of *Eghbala et al. (2018)* (17) who found significant formation of MDA in isolated lymphocytes from occupationally exposed nurses to antineoplastic drugs as compared lymphocytes isolated from healthy unexposed nurses. Also, they found a significant decrease in reduced glutathione (GSH) level followed by a large increase in the levels of oxidized glutathione in the isolated lymphocytes of nurses who are occupationally exposed to anticancer drugs compared to those of healthy non-exposed workers in similar circumstances.

Studies of neoplastic disease illustrated an increase in reactive oxygen species (ROS) and decrease in plasma levels of vitamins C and E as well as glutathione peroxidase in treatment with anti-neoplastic drugs (18). Also, the current study agreed with many studies that evaluated oxidative stress induced by anti-neoplastics both in vitro and in vivo (19, 20, 21).

Anti-neoplastic drugs can generate reactive oxygen species (ROS) via the xanthine-xanthine oxidase system, mitochondria, and NADPH oxidase in cells (22). Excess generated ROS will bind to membrane lipids, inducing lipid peroxidation. Also, increased ROS formation may directly oxidize the prosthetic protein group or reacts with the peptide chain, leading to functional changes in cellular organelles such as mitochondria and lysosomes (23).

The present study showed correlation between chromosome damage and oxidative stress among the occupationally exposed nurses with risky behavior as eat and drink during work and wear protective measures as gloves and face masks, these results were in accordance with *El-Ebiary et al. (2013)* and *Aristizabal-Pachon & Castillo (2020)* (24, 8) who established in different practitioners that protective measures applied to the handling of antineoplastics can substantially reduce the genotoxic effect of these agents.

A rapid, inexpensive, simple, and sensitive technique is used to detect early DNA damage that occurs at the single cell level, this is called comet assay test. Using these test different forms of DNA damage can be found (25, 26). In the current study; participants were investigated for genotoxicity using comet assay. The mean comet tail length & moment were significantly higher in antineoplastic occupationally exposed nurses than the level of the control group.

These results agreed with the study of *Yoshida et al. (2006)* (27) who reported lymphocyte DNA damage (increased tail length) measured by comet assay in nurses occupationally exposed to chemotherapeutics. Several studies that had assessed the genotoxic potential of individuals handling anti-neoplastic agents using comet assay had found DNA damage to be significantly higher than the controls (28, 29, 30). Contrary to these findings, researchers examining DNA damage in health care staff who handle anti-neoplastic drugs found no statistically

significant increase in DNA damage in nurses with regard to controls detected by comet assay (31).

The present study revealed a significant increase in MDA, comet tail length & moment, and reduction in GSH in correlation with increased age & duration of work and exposure among occupationally exposed nurses. In line with these results, other studies on genotoxic effect of exposure to anti-neoplastic drugs had concluded a similar increase in DNA damage with the years of exposure (29). Also, a study done by Hessel et al. (2001) and Kopjar et al. (2009) (32, 33) had demonstrated increase of micronuclei frequency in peripheral blood of exposed workers tended to rise with age. Cytogenetically, aging is linked with a range of gross cellular changes, which include changed size and morphology, genomic instability, and expression and proliferation changes (34).

This genotoxic effect is mediated by initiation of the phenotype of genomic instability, which allows the initiated cell to transform into a cancer cell by promoting higher proliferative capacity. It is well recognized that cancer results from an accumulation of several genetic changes that can be controlled by chromosomal changes that can be cytogenetically discovered (35).

#### LIMITATIONS

The current study is limited by its small sample size and the use of a convenience sample. A larger, representative sample size would offer some generalizability. Because of the limited sample, these findings can only be attributed to the participants who were willing to participate in a study of this type.

#### CONCLUSION

The current study indicated that occupational exposure to antineoplastic drugs led to oxidative stress & genotoxic DNA damage in nurses working in hematology and oncology unit, internal medicine department, Benha University Hospital, in comparison to non-exposed participants.

#### RECOMMENDATIONS

1. Determination of biomarkers of oxidative stress and DNA damage should be used as early detectors of genotoxic effects of antineoplastic drugs in order to prevent health hazards in occupationally exposed nurses.
2. Further researches should be done to explain the exact molecular mechanism of chemotherapeutics that might be used as a cornerstone for determination of exposure limits and work environment standards.
3. Frequent change of position of work of subjects handling these chemotherapeutics.

#### ACKNOWLEDGEMENT

Our great thanks to all staff members worked at Hematology & Oncology Unit, Internal Medicine Department, Faculty of Medicine, Benha University Hospitals.

**Conflict of interest:** None to be declared.

**Funding:** None.

## REFERENCES

- Gajski G, Ladeira C, Gerić M, et al. Genotoxicity assessment of a selected cytostatic drug mixture in human lymphocytes: a study based on concentrations relevant for occupational exposure. *Environ Res* 2018; 161:26-34.
- IARC (International Agency for Research on Cancer). A review of human carcinogens-Part A: pharmaceuticals. IARC Monographs on the Evaluation of Carcinogenic Risks to Humans. 2011 Vol. 100. IARC press, Lyon, France, pp.1-486.
- Zinatizadeh MR, Zare Mirakabadi A, Kheirandish Zarandi P, Mirzaei HR, Parnak F, Javadi Sh. The Effects of ICD-85 in vivo and in vitro in Treatment of Cancer: An Overview. *Asia Pac J Med Toxicol* 2019; 8(4):130-135.
- Kopjar N, Milas I, Garaj-Vrhovac V, Gamulin M. Alkaline comet assay study with breast cancer patients: evaluation of baseline and chemotherapy-induced DNA damage in non-target cells. *Clin Exp Med* 2006; 6: 177-190.
- Mahboob M, Rekhadevi P, Balasubramanyam A, et al. Monitoring of oxidative stress in nurses occupationally exposed to antineoplastic drugs. *Toxicol Int* 2012; 19: 20.
- Afshari R and Bellinger D. Chemical Risk without Concurrent External Exposure. *Asia Pac J Med Toxicol* 2019; 8(2): 30-33.
- Manda G, Nechifor MT, Neagu T-M. Reactive oxygen species, cancer, and anti-cancer therapies. *Curr Chem Biol* 2009; 3(1):22-46.
- Kopjar N, VericaGaraj-Vrhovaca, Kasubaa V, et al. Assessment of genotoxic risks in Croatian healthcare workers occupationally exposed to cytotoxicdrugs: Amulti-biomarker approach. *Int J Hyg Environ Health* 2009; 212: 414-431
- Aristizabal-Pachon AF and Castillo WO. Genotoxic evaluation of occupational exposure to antineoplastic drugs. *Toxicol Res* 2019; 36: 29-36
- Salimi A, Vaghar-Moussavi M, Seydi E, Pourahmad J. Toxicity of methyl tertiary-butyl ether on human blood lymphocytes. *Environ Sci Pollut Res* 2016; 23: 8556-8564.
- Hosseini MJ, Naserzadeh P, Salimi A, Pourahmad J. Toxicity of cigarette smoke on isolated lung, heart, and brain mitochondria: induction of oxidative stress and cytochrome c release. *Toxicol Environ Chem* 2013; 95:1624-1637
- Shaker DA and Rashed L.Oxidative stress and genotoxicity among workers exposed to copper in a factory for non-ferrous industry in Egypt. *Egypt J Occup Med* 2019; 43 (1): 1-15.
- Collins AR, Dusinská M, Horváthová E, et al. Inter-individual differences in repair of DNA base oxidation, measured in vitro with the comet assay. *Mutagenesis* 2001; 16(4): 297-301.
- Gulten T, Evke E, Ercan I, et al. Lack of genotoxicity in medical oncology nurses handling antineoplastic drugs: Effect of work environment and protective equipment. *Work* 2011; 39: 485-489.
- Buschini A, Villarini M, Feretti D, et al. Multicentre study for the evaluation of mutagenic/carcinogenic risk in nurses Downloaded by exposed to antineoplastic drugs: Assessment of DNA damage. *Occup Environ Med* 2013; 101475.
- Yu E. Occupational Exposure in Health Care Personnel to Antineoplastic Drugs and Initiation of Safe Handling in Hong Kong. *J Infus Nurs* 2020; 43 (3): 121-133
- Eghbala MA, Yusefia E, Tavakoli-Ardakanib M, et al. Exposure to Antineoplastic Agents Induces Cytotoxicity in Nurse Lymphocytes: Role of Mitochondrial Damage and Oxidative Stress. *Iran J pharmaceut res* 2018; 17: 43-52.
- Andreadou I, Sigala F, Iliodromitis EK, et al. Acute doxorubicin cardiotoxicity is successfully treated with the phytochemical oleuropein through suppression of oxidative and nitrosative stress. *J molecu cell cardio* 2007; 42: 549-58.
- Wagner BA, Evig CB, Reszka KJ, et al. Doxorubicin increases intracellular hydrogen peroxide in PC3 prostate cancer cells. *Arch Biochem Biophys* 2005; 440: 181-190.
- Alexandre J, Nicco C, Chéreau C, et al. Improvement of the therapeutic index of anticancer drugs by the superoxide dismutase mimic mangafodipir. *J Natl Cancer Inst* 2006; 98: 236-244.
- Hawai Y, Nakao T, Kunimura N, et al. Relationship of intracellular calcium and oxygen radicals to cisplatin-related renal cell injury. *J Pharmacol Sci* 2006; 100: 65-72.
- Yao X, Panichpisal K, Kurtzman N, Nugent K. Cisplatin nephrotoxicity: a review. *Am J Med Sci* 2007; 334:115-124.
- Kang KA and Hyun JW. Oxidative stress, Nrf 2, and epigenetic modification contribute to anticancer drug resistance. *Toxicol Res* 2017; 33: 1.
- El-Ebiary AA, Abuelfadl AA, Sarhan NI. Evaluation of genotoxicity induced by exposure to antineoplastic drugs in lymphocytes of oncology nurses and pharmacists. *J App Toxicol* 2013; 33:196-201
- Osborne AJ, Elledge SJ, Zou L. Checking on the fork. The DNA-replication stress-response pathway. *Trends Cell Biol* 2002; 12 (11): 509-516.
- Collins AR. The comet assay for DNA damage and repair: principles, applications and limitations. *Mol Biotechnol* 2004; 26 (3): 249-261
- Yoshida J, Kimiko H, Tomioka -Kumagai S. Genotoxic Risks to Nurses from Contamination of the Work Environment with Antineoplastic Drugs in Japan. *J Occup Health* 2006; 48(6): 517-522
- Maluf SW, Erdtmann B. Follow up study of the genetic damage in lymphocytes of pharmacists and nurses handling antineoplastic drugs evaluated by cytokinesis-block micronuclei analysis and single cell gel electrophoresis assay. *Mutat Res* 2000; 471: 21-27.
- Deng H, Zhang M, He J, et al. Investigating genetic damage in workers occupationally exposed to methotrexate using three genetic end-points. *Mutagenesis* 2005; 20: 351-357.
- Laffon B, Teixeira JP, Silva S, et al. Genotoxic effects in a population of nurses handling antineoplastic drugs, and relationship with genetic polymorphisms in DNA repair enzymes, *Am J Ind Med* 2005; 48 : 128-136.
- Ursini CL, Cavallo D, Colombi A, et al. Evaluation of early DNA damage in health care workers handling antineoplastic drugs. *Int Arch Occup Environ Health* 2006; 80: 134-240.
- Hessel H, Radon K, Pethran A, et al. The genotoxic risk of hospital, pharmacy and medical personnel occupationally exposed to cytostatic drugs—Evaluation by the micronucleus assay. *Mutat Res* 2001; 497: 101-109.
- Kopjar N, Garaj-Vrhovac V, Kasuba V, et al. Assessment of genotoxic risks in Croatian health care workers occupationally exposed to cytotoxic drugs: a multibiomarker approach. *Int J Hyg Environ Health* 2009; 212: 414-431.
- Zietkiewicz E, Wojda A, Witt M. Cytogenetic perspective of ageing and longevity in men and women. *J Appl Genet* 2009; 50: 261-273.
- Norppa H, Bonassi S, Hansteen IL, et al. Chromosomal aberrations and SCEs as biomarkers of cancer risk. *Mutat Res* 2006; 600 (1-2): 37-45.