

## ***An Experimental Investigation on the Effect of Vertical Distance and Inclination Angle of S-Shaped Channel on Two-Phase Flow Patterns***

M.R. Ansari, M. Azadi and R. Gheisari

### **ABSTRACT**

An experimental investigation is conducted to study the effect of vertical distance and inclination angle of a S-shaped channel on two-phase flow patterns. Five flow patterns of vortex plug, vortex slug, vortex wavy-annular, churn and mist packet annular were observed. Flow pattern maps were obtained for each case and then compared based on the different vertical distance and inclination angle to perform a parametric study. Increasing mid-section length and inclination angle cause the transition to vortex plug flow pattern to occur at higher liquid velocities as well as a greater area of churn flow pattern at the expense of smaller vortex slug flow pattern area. However, increasing mid-section length and decreasing inclination angle, ends in smaller area of mist packet annular area. It is revealed that for higher mid-section lengths, effect of increasing inclination on shifting transition lines between flow patterns is more determining.

**KEYWORDS :** Two-phse flow, Flow pattern, Flow pattern map, S-shaped channel, Transition line

---

/ / :

// :

mra\_1330@modares.ac.ir

i

msn.azadi@gmail.com

ii

gheisari.reza@gmail.com

iii

s

s

s

[ ]

[ ]

( / ° )

( )

[ ]

|

( )

cm

[ ]

m

( )





x

/

x,y,z

T

[ ]

( )

$$J = \frac{Q}{A}$$

A

Q

( )

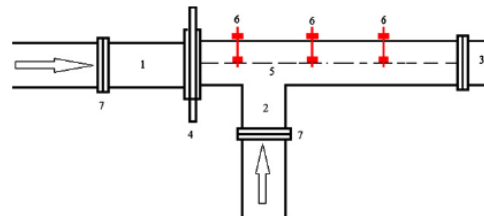
$l \text{ m}^3 / \text{hr}$

$l \text{ m}^3 / \text{hr}$

( )

[ ] ANSI/ASME

$\pm \% \pm / \%$



:  
: ( )

: ( )





S

:( )

S

S

$$(1 < j_f < 1) / \quad m^3/hr$$

$$m^3/hr$$

$$(1 < j_g < 1)$$

$$^{\circ} C$$

$$[ ]$$

$$/ \quad / \quad /$$

Archive of SID



S

:( )

S

S

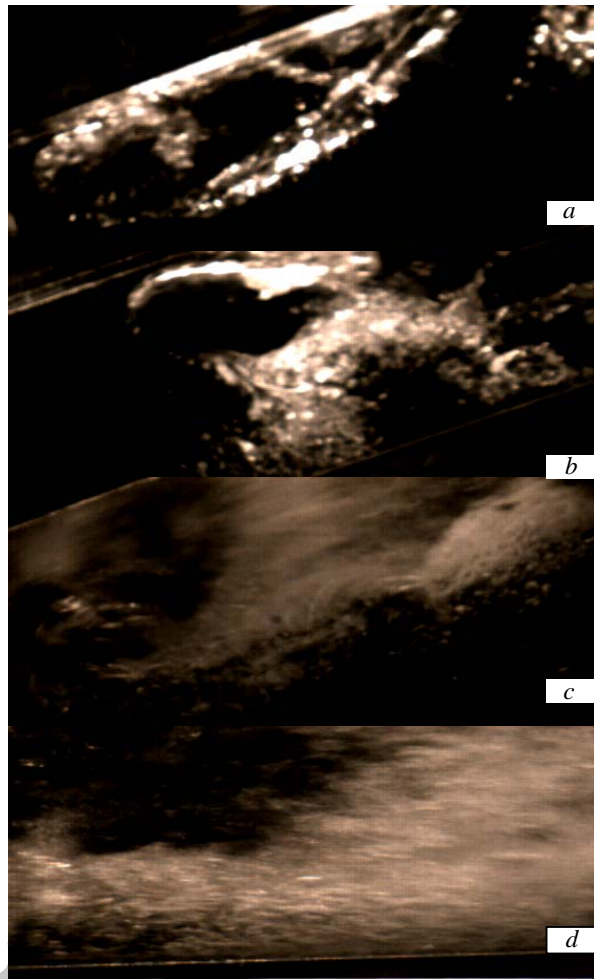
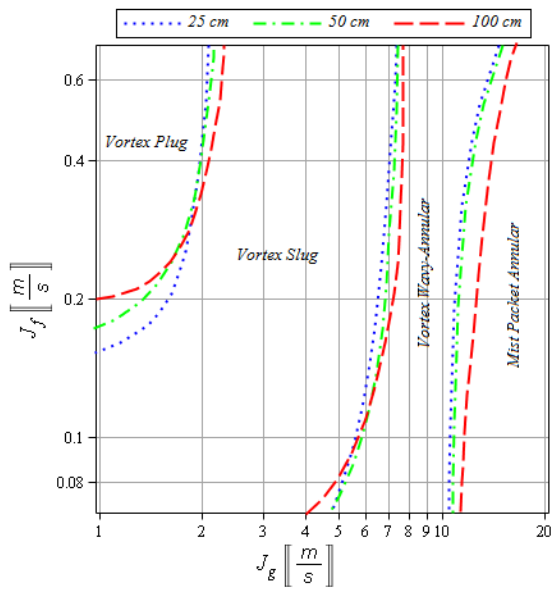
S

[ ]

( )

S

( )



Archive

(b) (a) (c)  
(d) (c)

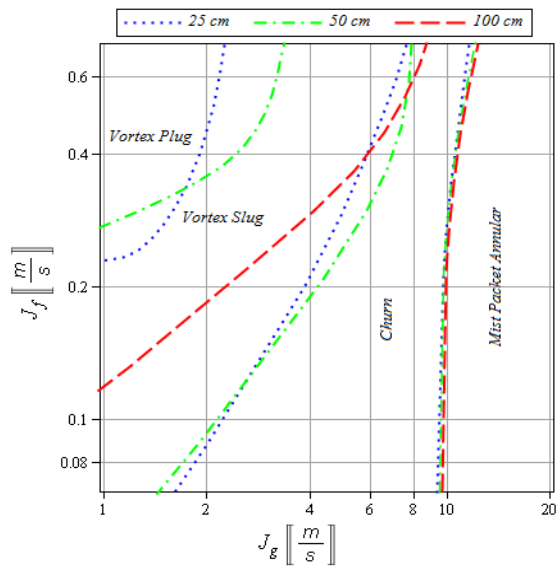
۴-۱-۲- شیب ۴۵°

۴-۱-۱- شیب ۲۲/۵°

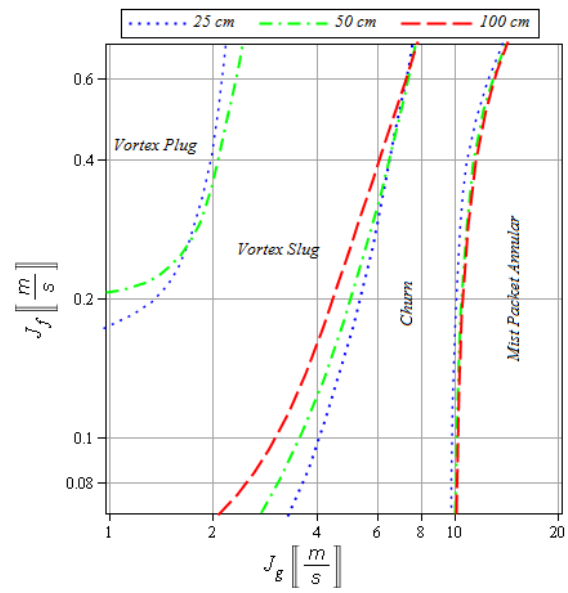
( )

( ) / °





90°

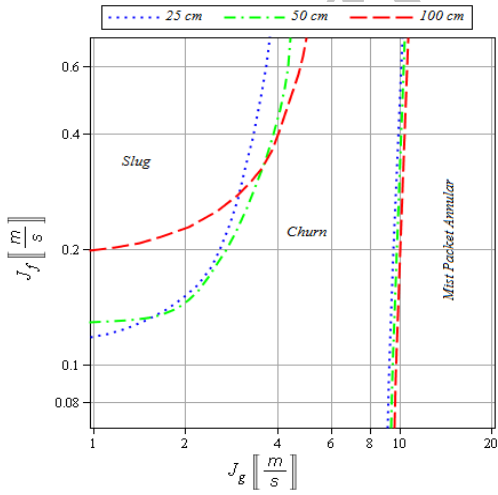


67.5°

cm

cm

۹۰° - ۴-۱-۴



67.5°

۶۷/۵° - ۳-۱-۴

cm

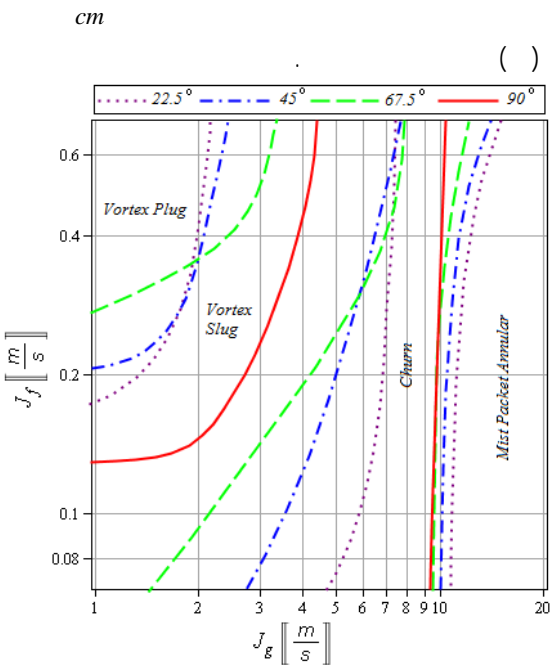
cm

S

l°

۵۰ cm طول - ۲-۲-۴

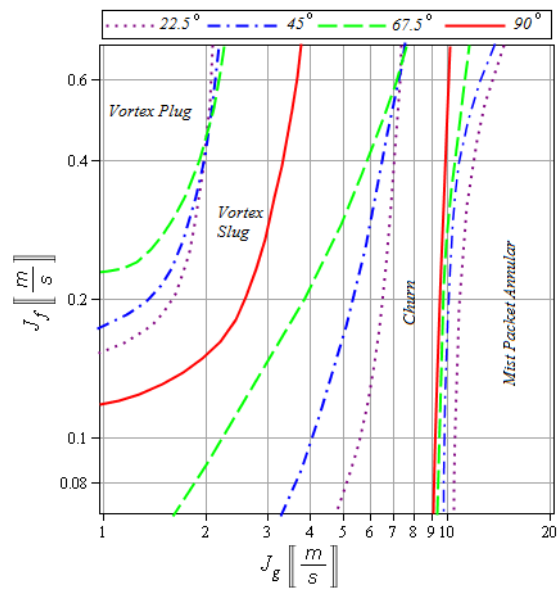
۲۵ cm طول - ۱-۲-۴



cm

cm

( )



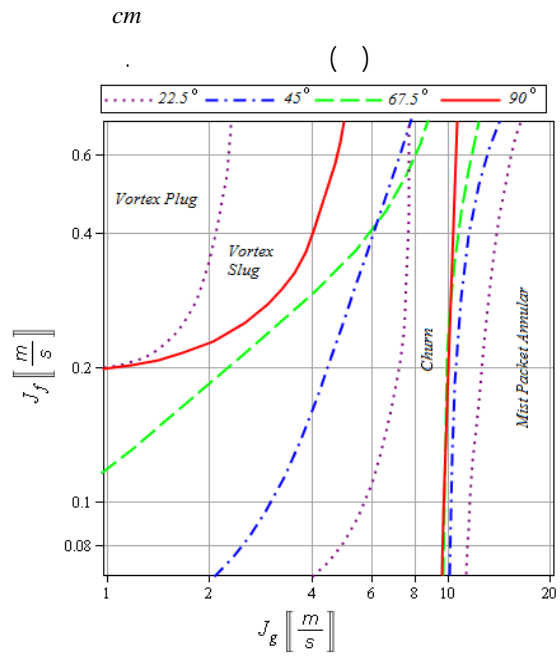
cm

( )



/ / / /





Archive of

M. Tshuva, D.Barnea, Y. Taitel, "Two-phase flow in inclined parallel pipes", Int. J. Multiphase Flow 25, 1491- 1503, 1999. [ ]  
 G. Oddie, H. Shi, L.J. Durlofsky, K. Aziz, B. Pfeffer, J.A. Holmes, "Experimental study of two and three phase flows in large diameter inclined pipes", Int. J. Multiphase Flow (29) 527-558, 2003. [ ]

D. Barnea, O. Shoham, Y. Taitel, & A.E. Dukler, "Flow pattern transition for gas liquid flow in horizontal and inclined pipes", Int. J. Multiphase Flow 6, 217-225, 1980. [ ]  
 Y. Taitel, A.E. Dukler, "A Model for Predicting Flow Regime Transitions in Horizontal and Near Horizontal Gas-liquid Flow", AIChE Journal, Vol. 22, No. 1 47-55, 1976. [ ]

Incropera, F., Dewitt, P.D., 1996. Introduction to Heat Transfer, third ed. John Wiley & Sons Inc. [ ]

J.W. Coleman, S. Garimella, "Two-phase flow regimes in round, square and rectangular tubes during condensation of refrigerant R134a", International Journal of Refrigeration, (26) 117-128, 2003. [ ]

J.Weisman, D. Duncan, J.Gibson, & T. Crawford, "Effects of fluid properties and pipe diameter on two phase flow patterns in horizontal lines", Int. J. Multiphase Flow 5, 437-462, 1979. [ ]

B.D. Woods, E.T. Hurlburt, T. J. Hanratty, "Mechanism of slug formation in downwardly inclined pipes", International Journal of Multiphase Flow, (26) 977-998, 2000. [ ]

ANSI/ASME, 1986, Measurement uncertainty, PTC 19, 1-1985, Part I. [ ]

$A$   $m^2$

$J$   $m/s$

$f$

$g$

Archive of SID

