

Detect of Accident Causes in Construction Workplace

E. Shakeri; M. Darabi; M. Torabi Z.

ABSTRACT

Despite today's huge improvements in construction engineering and management methods, construction projects are considered as the riskiest workplaces. The work cure at this projects sites more than others are at risk. Hence, special attention to safety in these workplaces is needed to reduce the rate of accidents.

However, the project stakeholders' commitments to safety requirements are not evident at the regular arrangements. The aim of this study is to analyze the most common type of accidents and their consequences identified based on statistical and surveys in Iran construction projects and especially in Isfahan. Results shows that in building workplaces, human and organizational factors are the main sources of accidents. It also shows that project parties including owner, consultant and contractor are not familiar with safety rules and regulations and the lack of dedication, conviction and adequate supervision make this conditions worst.

KEYWORDS : Safety, Accident, Effect Factors, Accident cause

c.moslemdarabi@aut.ac.ir
mahditorabi@aut.ac.ir

eshakeri@aut.ac.ir

ii

iii

[] / /

[]

%

[]

()

[]

[]

[]

[]

()

					-	
					-	
	-				-	
	-					
	-					
	-				-	
	-				-	
	-				-	

[]

[]

o / / / /

» « »
.[] «

()
.[]"

OHSAS

ISO/IEC Guide2
18001

ISO/IEC

.[]" "

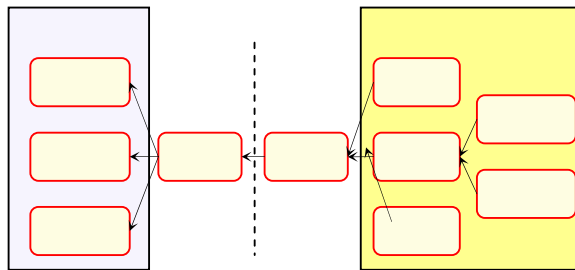
.[]

Archive of SID

) () ()
()

۳-۴-۲- پیامدهای مالی حوادث

() []



() :

۱-۴-۲- پیامدهای انسانی حوادث

()

[]

[]

[]

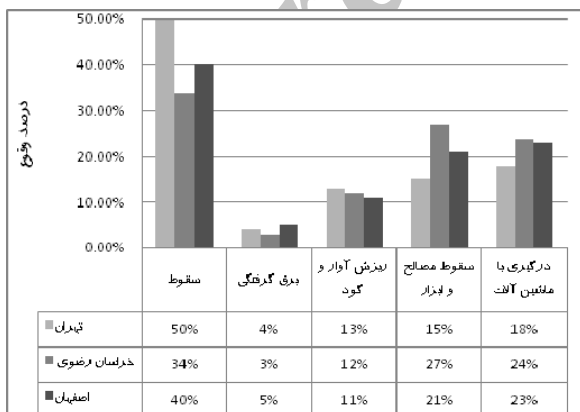
()

)

(

[]

۲-۴-۲- پیامدهای محیطی حوادث



() :

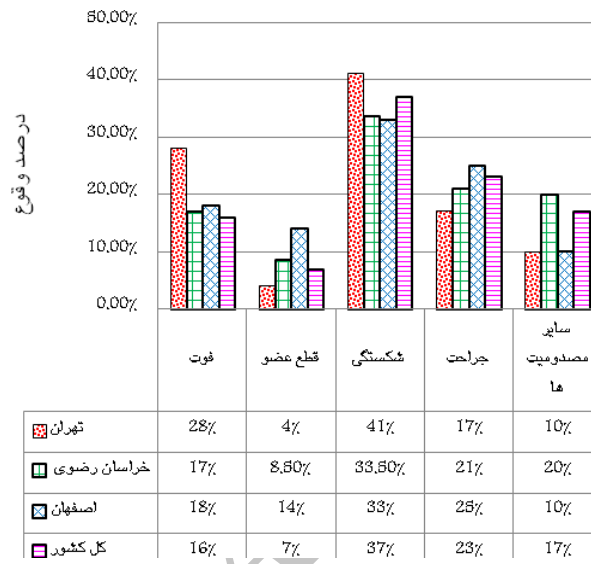
()

[]



()
()

%



() :

%

%

۱-۳-۳ بررسی شغل مصدومین

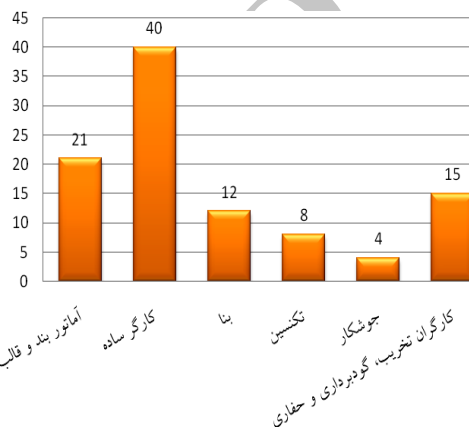


()

()

۳-۳-۳ بررسی محدوده سنی مصدومین

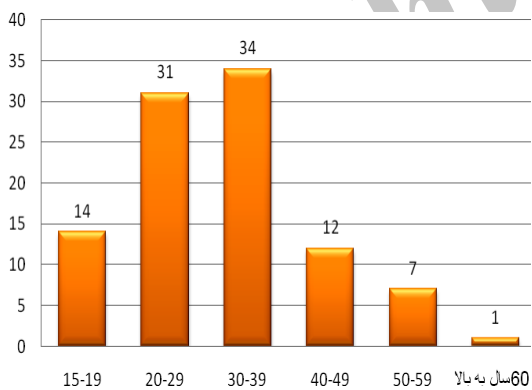
()



()

۲-۳-۳ بررسی حوادث از نظر مرحله انجام کار

()



()

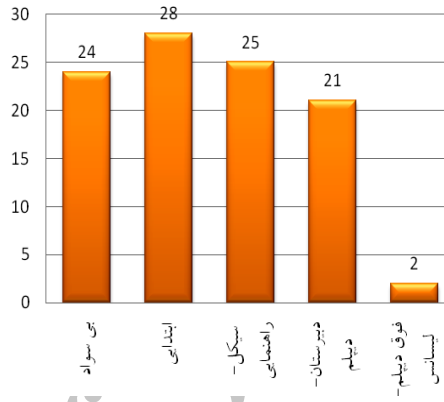
۴-۳-۳ بررسی سطح تحصیلات مصدومین

()

%



/ / / /



()

()

۳-۴-۱- شناسایی عوامل خطر آفرین

Archive of SID

()

()

()

شناسایی عوامل خطر آفرین									
عنوان		تعداد		درصد		رتبه		نکته	

()

۳-۴-۲- طبقه‌بندی عوامل خطر آفرین

()

()

:()

				✓	
					✓
					✓
			✓		
				✓	
				✓	✓
				✓	✓
					✓
					✓
					✓
					✓
				✓	✓
				✓	✓
					✓
			✓	✓	✓
				✓	✓
				✓	✓
					✓

:()

= _____

:(() ())

% / % /

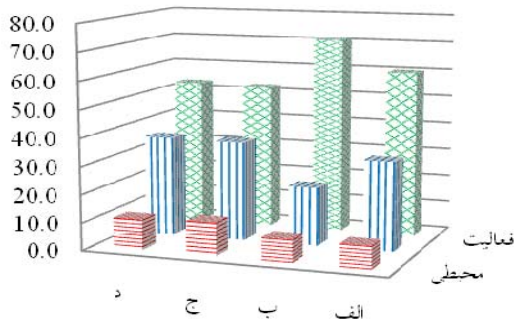
= _____ = %

% %

)

:(

= _____



شکل (۸): مقایسه میزان اثر منشأ عوامل خطر آفرین در بروز

	الف	ب	ج	د
محیطی	60.0	52.4	53.0	11.0
انسان	32.0	21.0	36.0	11.9
فعالیت	8.0	8.0	11.0	11.0

% %

:()

= _____

:

= _____ = %

% ,

% ,

(())

:

$$= \frac{\sum (\quad \times \quad)}{\sum (\quad \times \quad)}$$

:

= _____ = %

% %



/ / / /

.www.moshaveriso.blogspot.com ()	[]	«	»	[]
»	[]	«	»	[]
«	[]			[]
(NIOSH)	[]			[]
Haslam, R.A. Hide. S.A , “contributing factors in construction accidents” , Ap Ergonomics , no 36,2005.	[]		ISO8402:1992	[]
Safety and Health in Construction, code of. practice, ILO, 1992.	[]		ISO/IEC Guide2	[]
O. Salem et al A behavior - based Safety approach for Construction projects. Proceedings IGLC – 15, 2007.	[]	«	»	[]
		«	»	[]

¹ Ellen bog
² NIOSH
³ OSHA
⁴ ILO