
Archive of SID

(/ / : / / :)

*

()

%

SEM

SEM

%

%

SEM

:

...

Guo et Kanny & Mohan, 2010)

(al., 2007

)

(

)

(

(CNTs)

)

(

(Jiang et al., 2003)

)

(

Rowell et al., 1998 Rana et al., 1998)

)

(Clemons et al., 2010)

(Clemens, 1995

(Salvetat et al., 1999)

(

(Maldas & Kokta, 1994 Toriz et al., 2002)

(Farsi, 2010)

Younesi et al.

Noguchi et al. (2004) Loos et al. (2008) (2012)

Li et al. (2007)

Manchado et al. (2005) .

(Henriksson et al., 2008)

Shi et al. (2008)

¹ Carbon nanotubes

Faruk & Matuana (2008)

()

/ ± / mm

/ ± / mm

LH0050

/ g/cm³

D

/

) ASTM

/ g/10 min (

(MAPE)

Tavasoli Farsheh et al. (2011)

KJS 111

¹ Single wall nanotube

² Multi wall nanotube

³ Low Density Polyethylene

⁴ Melt Flow Index

...

/ /
/ g/10 min

(Kim et al., 2010)

HAKKE

rpm

nm

%

* * mm

MAPE	LDPE
()	()
()	()

Archive of SID

/

()

ASTM D

/ * /

± C °

SPSS

$$WA(t) = \frac{W_t - W_o}{W_o} \times 100 \quad ($$

$$\begin{aligned} & ;(\%) \quad t & = WA(t) \\ & & = W_t \\ & (gr) & = W_o \end{aligned}$$

$$TS(t) = \frac{T_t - T_o}{T_o} \times 100 \quad ($$

$$\begin{aligned} & ;(\%) \quad t & = TS(t) \\ & ; (mm) \quad t & = T_t \\ & (mm) & = T_o \end{aligned}$$

SEM

cm

D

mm/min

ASTM

* * mm

Instron- 1186

X

ASTM

D

IZOD

* * mm

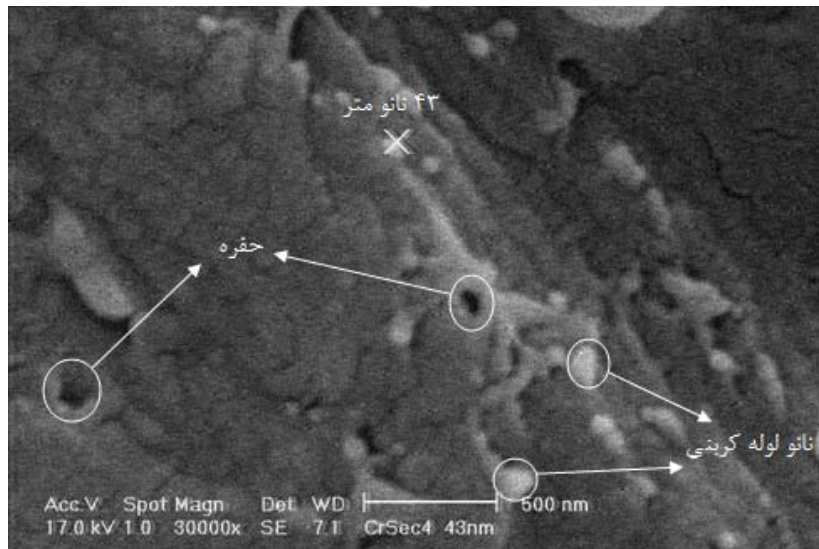
SEM

X () MAPE

XL 30-Philips

² Statistical Package for Social Science

¹ Scanning Electron Microscope (SEM)



(×)



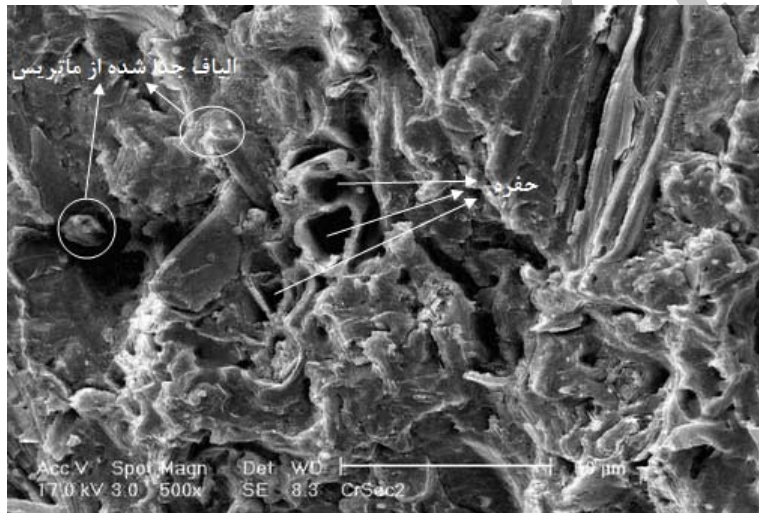
(×)

X

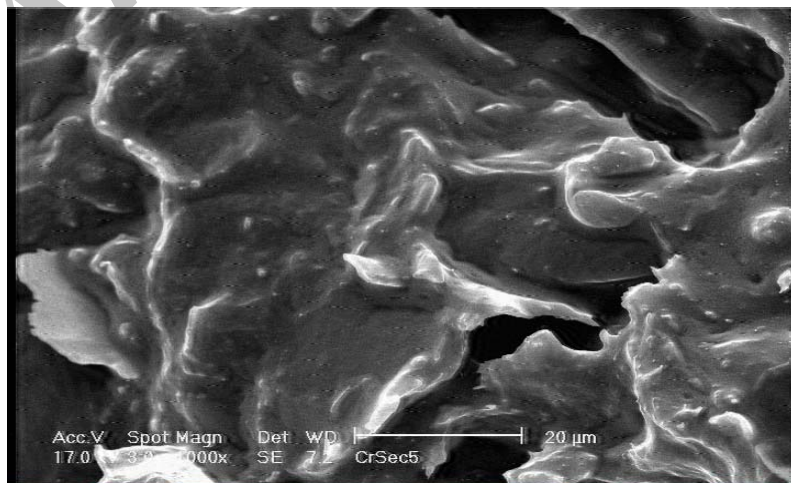
X

X

MAPE

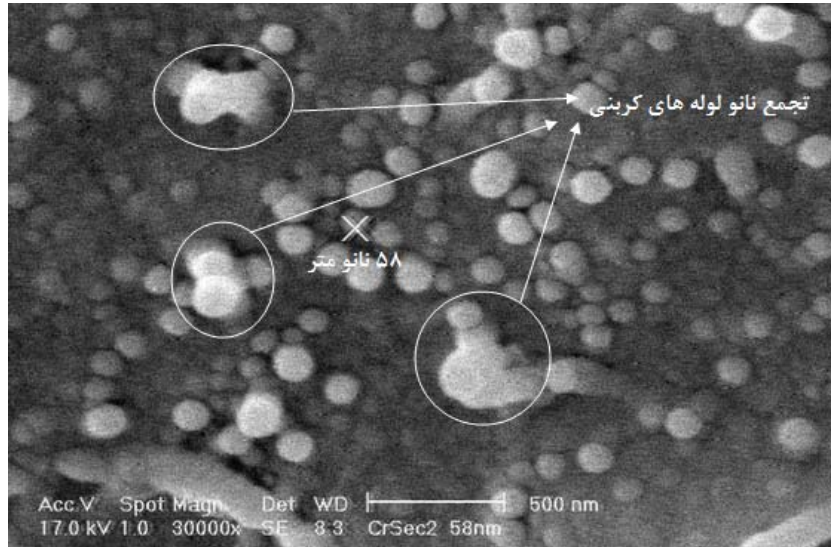


(×)



(×)

SEM



(×)

SEM

Archive of SID

()	()	()	()	()
/	/	/	/	/
/	/	/	/	/
/	/	/	/	/
/	/	/	/	/
/	/	/	/	/
/	/	/	/	/
/	/	/	/	/

F	F	F	F	F	
/ **	**	/ **	/ **	/ **	(A)
/ **	**	/ **	/ **	/ **	(B)
/ ns	/ **	/ **	/ **	/ **	(AB)

ns

**

				(%)
/ c	/ bc	/ b	/ a	(%)
/ b	/ ab	/ ab	/ a	(%)
/ a	/ ab	/ ab	/ b	()
/ a	/ a	/ ab	/ b	()
/ a	/ a	/ ab	/ b	()

Espert et al.

b c

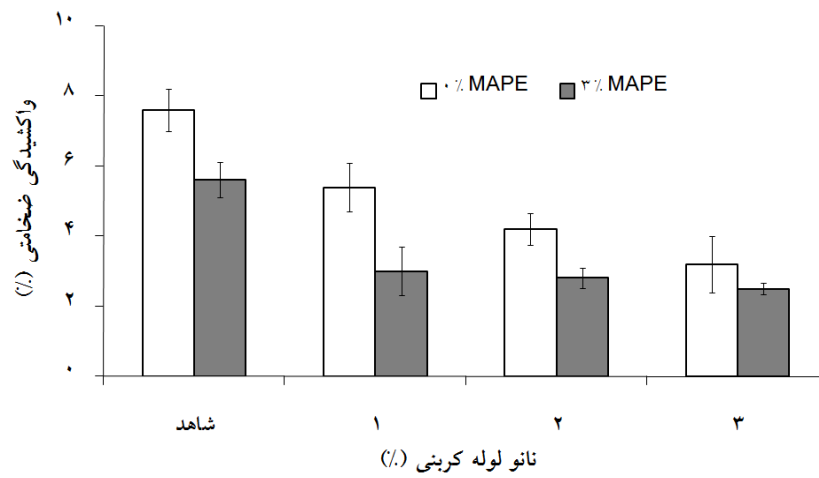
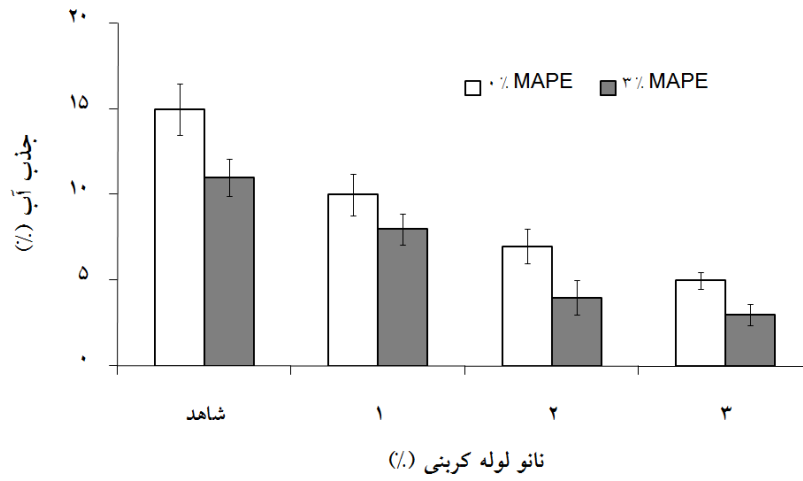
(2004)

%

MAPE

MAPE

(Filex et al., 1991)



(Kazemi Najafi, et al., 2010)

(L/D)
()

MAPE

()

SEM

(Tavasoli Farsheh et al., 2011)

a

/

/ /

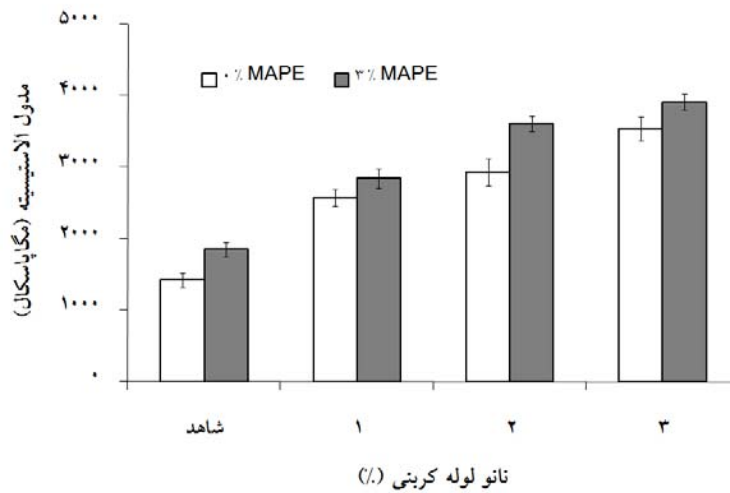
%

ab

MAPE

(Hull, & Clyne, 1996)

MAPE



Salvetat et al. (1999)

(TPa)

a

%

MAPE

Li et al. Shi et al. (2008)

(2007)

()

Prashantha et al. (2008)

Sanadi)

(et al., 1996

MAPE

()

Archive of SID

Chowdhury & wolcott (2007)

(Prashantha et al., 2008)

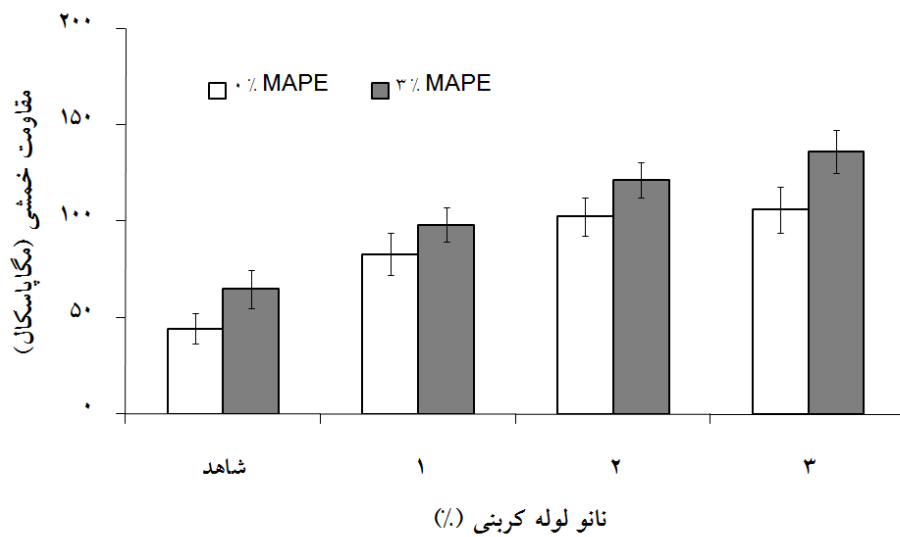
SEM

MAPE

/ /

% MAPE %

MAPE



Archive of

%

MAPE

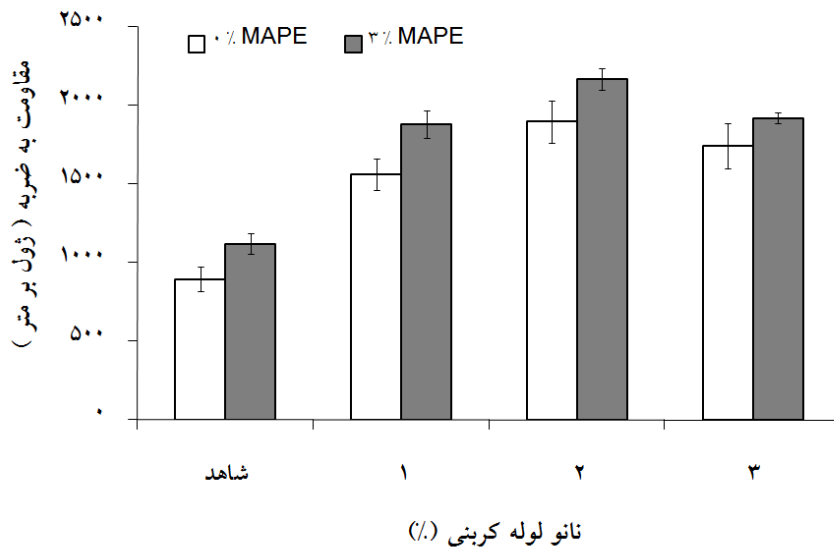
(Makar et al., 2005)

SEM

a

% MAPE %

MAPE



Archiv

SEM

SEM

SEM

%

%

%

%

Archive of SID

References

- Chowdhury, M. and Wolcott, M. 2007. Compatibilizer Selection to Improve Mechanical and Moisture Properties of Extruded Wood-HDPE Composites. *Forest Products Journal*. Vol. 57(9). 8pp.
- Clemens, C. 1995. Exploratory Microscopic Investigation of Impacted Paper Fiber Reinforced Polypropylene Composite. *Wood fiber-Plastic Composites: Virgin and Recycled Wood Fiber and Polymers for Composites*, Madison, WI: 173–179. USA.
- Clemons, C.M., Sabo, R.C., Kaland, M.L., and Hirth, K.C. 2010. Effects of silane on the properties of wood-plastic composites with polyethylene-polypropylene blends as matrices. *Journal of Applied Polymer Science*. Vol. 119(3). 11pp.
- Espert, A., Vilaplana, F. and Karlsson. S. 2004. Compression of water absorption in natural cellulosic fibers from wood and one-year crops in polypropylene composites and its influence on their mechanical properties. *Journal of composites Part A*. Vol. 35(11). 10pp.
- Farsi, M. 2010. Wood–plastic composites: influence of wood flour chemical modification on the mechanical performance. *Journal of Reinforced Plastics and Composites*. Vol. 29(24). 6pp.
- Faruk, O. and Matuana, L.M. 2008. Reinforcement of Rigid PVC/Wood-Flour Composites with Multi-Walled Carbon Nanotubes. *Journal of Vinyl & Additive Technology*. Vol. 14(2). 5pp.
- Felix, J.M. and Gatenholm. P. 1991. The nature of adhesion in composites of modified cellulose fibers and polypropylene. *Journal of Applied Polymer Science*. Vol. 42(30). 11pp.
- Guo, G., Park, C.B., Lee, Y.H., Kim, Y.S. and Sain, M. 2007. Flame Retarding Effects of Nanoclay on Wood–Fiber Composites. *Polymer Engineering and Science*. Vol. 47(3). 6pp.
- Henriksson, M., Berglund, L., Isaksson, P., Lindstrom, T. and Nishino. T. 2008. Cellulose Nanopaper Structure of High Toughness. *Biomacromolecules*. Vol. 9(6). 7pp.
- Hull, D. & T.W. Clyne, 1996. *An Introduction to Composite Materials*. 2th Ed., Cambridge University Press, Cambridge, 344pp.
- Jiang, H., Kamdem, D.P., Bezubic, B. and Ruede. P. 2003. Mechanical Properties of Poly(vinyl chloride)/Wood Flour/Glass Fiber Hybrid Composites. *Journal of Vinyl & Additive Technology*. Vol. 9(3). Pp.
- Kazemi Najafi, S., Younesi Kordkheili, H. and Nasiri Avanaki. R. 2010. Effect of sea water on compatibilizer performance in water absorption behavior of wood-polypropylene composites. *Journal of Forest and Wood Products*. Vol. 62(3). 11pp.
- Kim, H.C., Kim, S.K., Kim, J.T., Rhee, Y.Y. and Kathi. J. 2010. The Effect of Different Treatment Methods of Multiwalled Carbon Nanotubes on Thermal and Flexural Properties of Their Epoxy Nanocomposites. *Journal of Polymer Science: Part B: Polymer Physics*. Vol. 48(11). 10pp.
- Li, G.Y., Wang, P.M., Zhao, X. 2007. Pressure-sensitive properties and microstructure of carbon nanotube reinforced cement composites. *Cement & Concrete Composites*. Vol. 29(5). 6pp.
- Loos, M.R., Coelho, L.A.F., Pezzin, S.H, and Amico. S.C. 2008. Effect of Carbon Nanotubes Addition on the Mechanical and Thermal Properties of Epoxy Matrices. *Materials Research*. Vol. 11(3). 6pp.
- Makar, J., Margeson, J. and Luh. J. 2005. Carbon nanotube/cement composites – early results and potential applications. *3rd International Conference on Construction Materials: Performance, Innovations and Structural Implications*, Vancouver: 1-10. Canada.
- Maldas, D. and Kokta. B.V. 1994. Use of Lignin as a Bonding Agent for Wood Fiber-Filled Polystyrene Composites. *Drevarsky Vyzkum*. Vol. 39(3). 17pp.
- Manchado, M.A., Valentini, I., Biagiotti, J. and Kenny. J.M. 2005. Thermal and mechanical properties of single-walled carbon nanotubes–polypropylene composites prepared by melt processing. *Carbon*. Vol. 43(7). 7pp.
- Mohan, T.P. and Kanny. K. 2010. Water barrier properties of nanoclay filled sisal fibre reinforced epoxy composites. *Composites Part A*. Vol. 42(4). 9pp
- Noguchi, T., Magario, A., Fukuzawa, S., Shimuzu, S., Beppu, J. and Seki. M. 2004. Carbon nanotube/aluminium composites with uniform dispersion. *Material Transact*. Vol. 45(2). 3pp.

-
- Prashantha, K., Soulestin, J., Lacrampe, M.F., Claes, M., Dupin, G. and Krawczak, P. 2008. Multi-walled carbon nanotube filled polypropylene nanocomposites based on masterbatch route: Improvement of dispersion and mechanical properties through PP-g-MA addition. *Polymer Letters*. Vol. 2(10). 11pp.
 - Rana, A.K., Mandal, B.C., Jacobson, M.R., Rowell, R.M. and Banerjee, A.N. 1998. Short Jute fiber-Reinforced Polypropylene Composite: Effect of Compatibilizer. *Journal of Applied Polymer Science*. Vol. 69(2). 10pp.
 - Rowell, R.M., Caulfield, D.F., Chen, G.W., Ellis, D., Jacobson, R.E., Lange, S.E. and Schumann, R. 1998. Recent Advances in Agro-fiber/Thermo Plastic Composites. *International Symposium on Natural Polymers and Composites, Atibaia, SP: 11–98. Brazil.*
 - Salvetat, J.P., Bonard, J.M., Thomson, N.H., Kulik, A.J., Forro, L., Benoit, W. and Zuppiroli, L. 1999. Mechanical properties of carbon nanotubes. *Applied Physics Material*. Vol. 69(3). 5pp.
 - Sanadi, R.A., Caulfield, D.F., Jacobson, R.E. 1996. Agro-Fiber–Thermoplastic Composites. In: R.M. Rowell, R.A. Young, J.R., *Paper and Composites from Agro-Based Resources*. CRC Press, New York, USA, 464pp.
 - Shi, J., Zhang, J., Pittman Jr, C.U., Toghiani, H. and Xue, Y. 2008. Preliminary study of the stiffness enhancement of wood–plastic composites using carbon nanofibers. *Holz Roh Werkst*. Vol 66(5). 10pp.
 - Tavasoli Farsheh, A., Talaeipour, M., Hemmasi, A.H., Khademieslam, H. and Ghasemi, I. 2011. Investigation on the mechanical and Morphological properties of foamed nanocomposites based on wood flour/ PVC/ Multi-walled carbon nanotubes. *Bioresources*. Vol. 6(1). 12pp.
 - Toriz, G., Denes, F. and Young, R.A. 2002. Lignin-Polypropylene Composites. Part 1 : Composites From Unmodified Lignin and Polypropylene. *Polymer composites*. Vol. 23(5). 8pp.
 - Younesi Kordkheili, H., Hiziroglu, S. and Farsi, M. 2012. Some of the physical and mechanical properties of cement composites manufactured from carbon nanotubes and bagasse fiber. *Materials and Design*. Vol. 33 (1). 4pp.

Archive of SID

Effect of Single Wall Carbon Nanotubes on Physical and Mechanical Properties of Wood Fiber- LDPE Composites

M. Farsi*¹ and H. Younesi Kordkheili²

¹Assistant Prof., Faculty of Wood and Paper Science and Technology, Sari Branch, Islamic Azad University, I.R. Iran

² Ph.D. Student of Wood and Paper Science and Technology, Tarbiat Modares University, Noor, I.R. Iran

(Received: 26 February 2011, Accepted: 31 December 2011)

Abstract

The aim of this research is investigation on influence of single wall carbon nanotubes (SWCNTs) on the physical and mechanical properties of wood fiber- LDPE composites. SWCNTs with 1, 2 and 3 wt% were dispersed in acetone and then in absent and present MAPE (0 and 3% wt) were mixed with wood fiber and HDPE by Haake internal mixer and then the wood plastic composites were manufactured by hot press method. The results show that SWCNTs and MAPE improve physical and mechanical properties of the composites. In absent and present MAPE, the composites with 3% SWCNTs exhibited the lowest water absorption and thickness swelling content and the highest flexural modulus and strength, respectively. SEM micrograph showed that, with adding compatibilizer dispersion of fibers and carbon nanotube are improved. The composites with 3% MAPE and 2% SWCNTs exhibited the highest impact strength. Based on SEM micrograph, with increasing carbon nanoyube up to 3%, these nanoparticles are agglomerated in the matrix and provide points of stress concentrations and crack propagation.

Keywords: single wall carbon nanotube, wood fiber- LDPE composite, physical properties, mechanical properties, SEM micrograph