
(// : // :)

A. sieberi Besser

A. sieberi

/

A. sieberi :

Archive of SID

...

() *A. sieberi*

()

A. aucheri *A. sieberi*

)

()

A. sieberi

(

()

A. sieberi

A. sieberi

()
()
()

A. sieberi

()

(TARI)

A. sieberi Besser

()

()

()

Olsvig – Whittaker
McAuliffe
Wondzell
El – Ghareeb
Hassan
Jensen
El – Demerdash

EDTA

A. sieberi

Minitab

()

Complete

Minitab

A. sieberi

A. sieberi

A. sieberi

()

()

pH

/

/

/

()

/

/

/

()

...

/

()

/

/

()

/

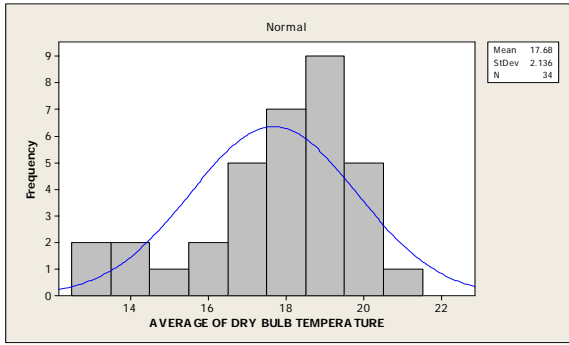
()

()

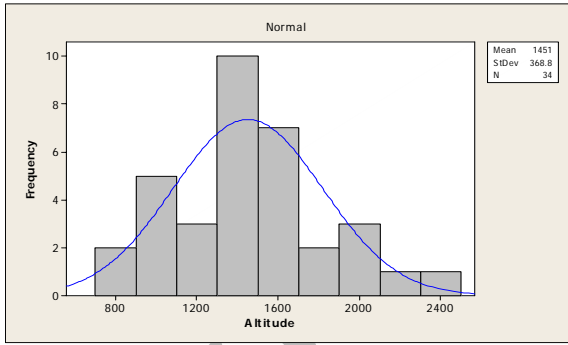
()

A. sieberi

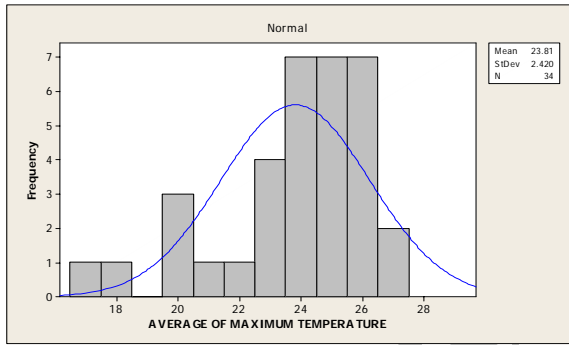
		()			



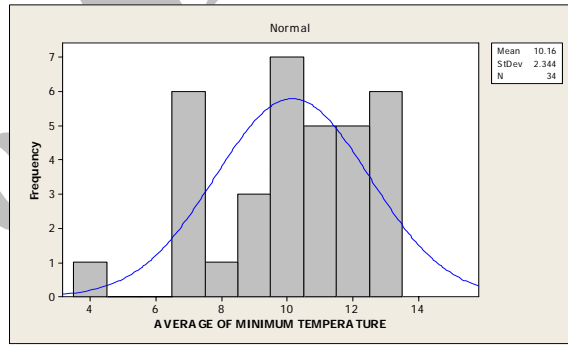
A. sieberi



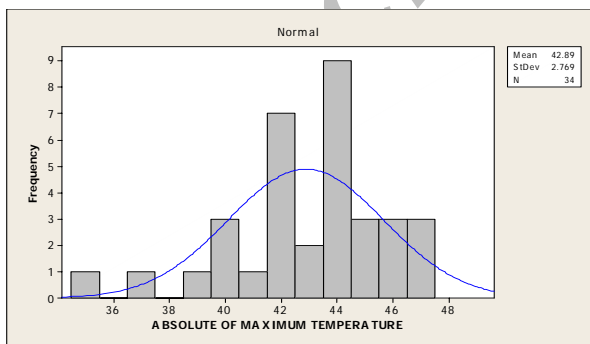
A. sieberi



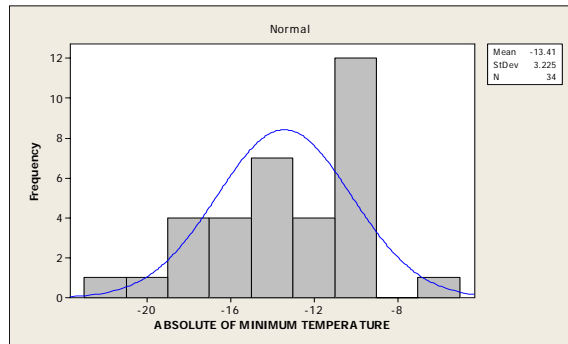
A. sieberi



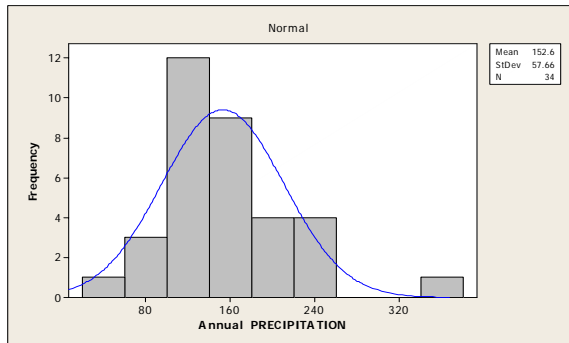
A. sieberi



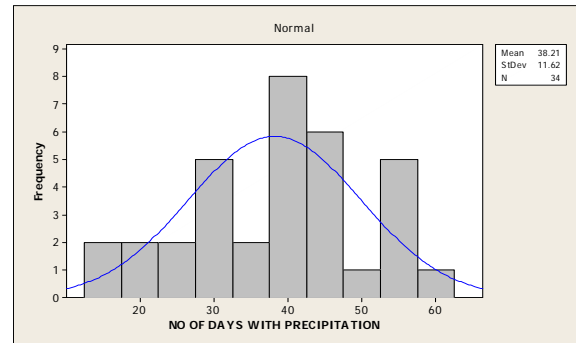
A. sieberi



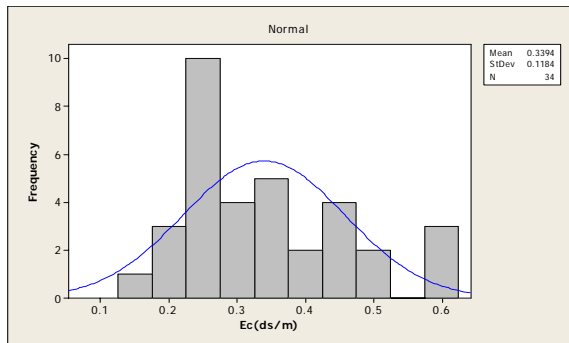
A. sieberi



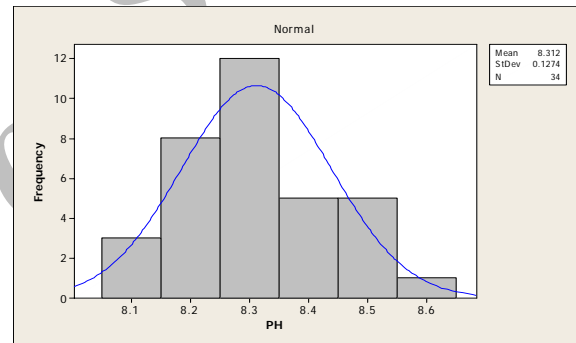
A. sieberi



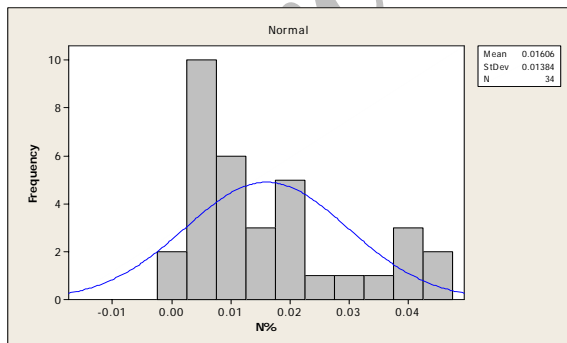
A. sieberi



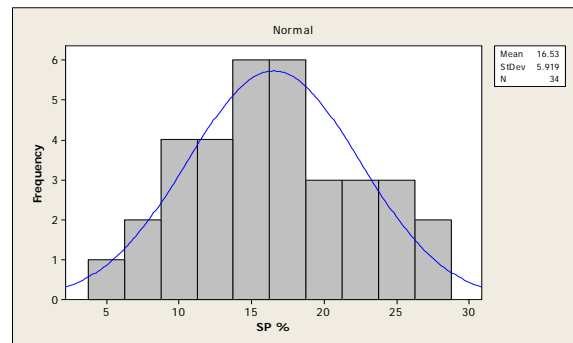
A. sieberi



A. sieberi

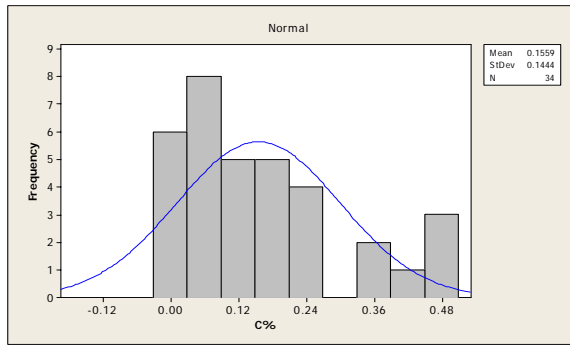


A. sieberi

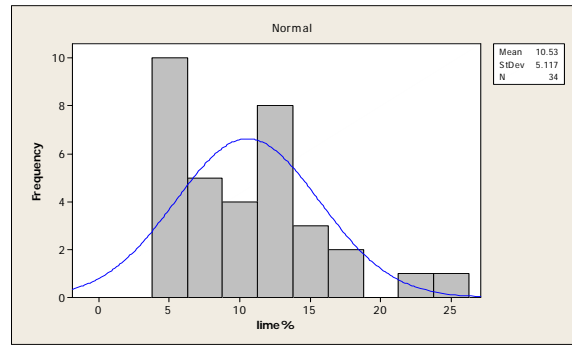


A. sieberi

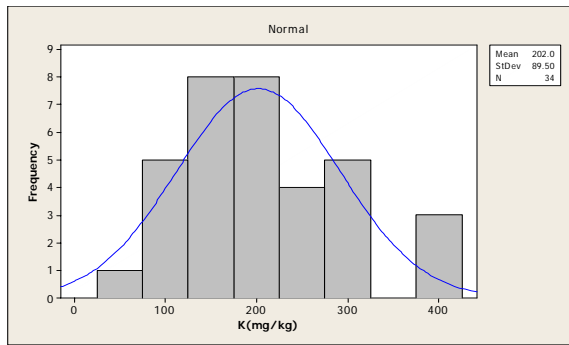
Archive of SID



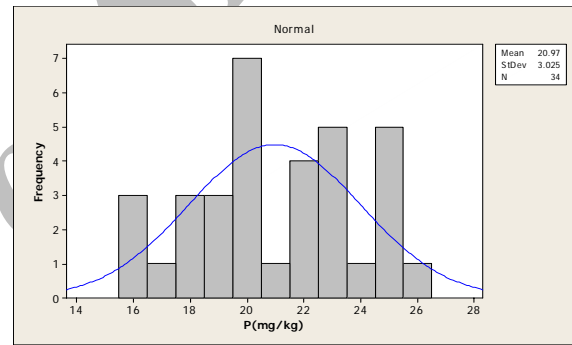
A. sieberi



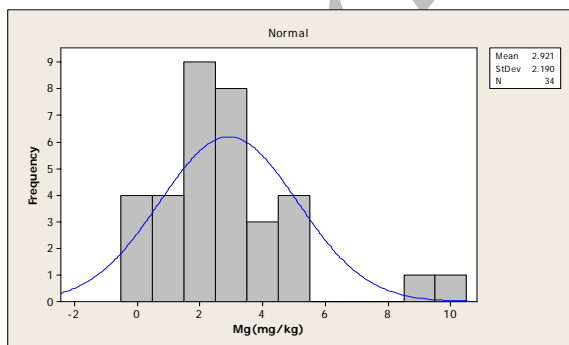
A. sieberi



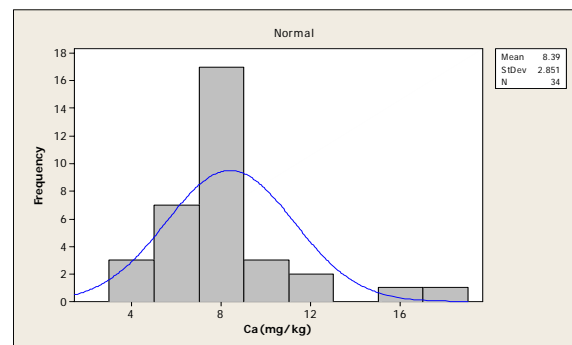
A. sieberi



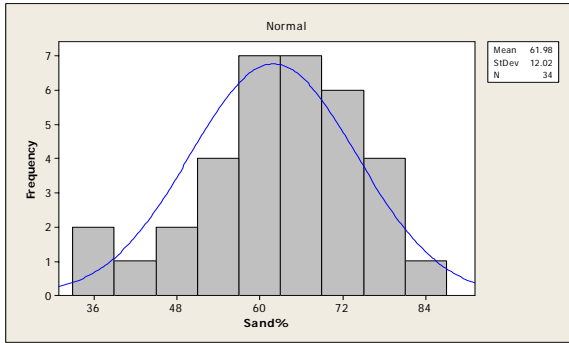
A. sieberi



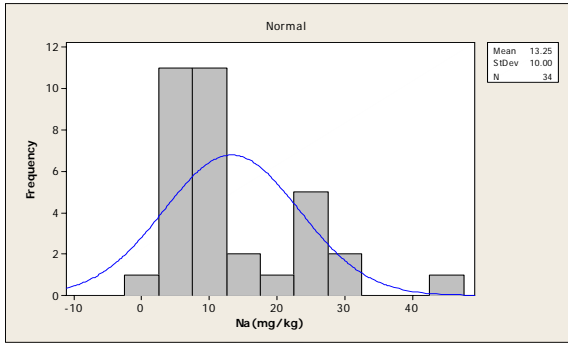
A. sieberi



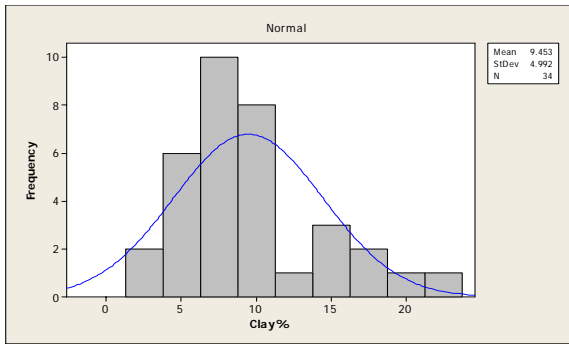
A. sieberi



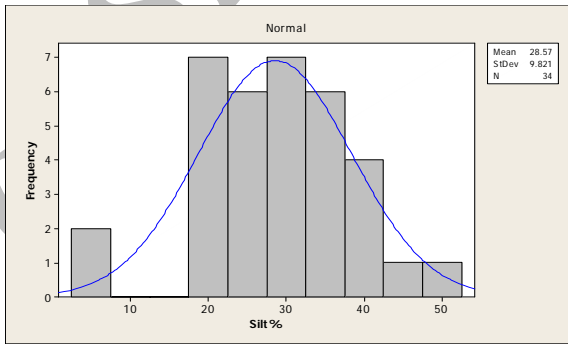
A. sieberi



A. sieberi



A. sieberi



A. sieberi

()

A. sieberi

/ / /
/ /

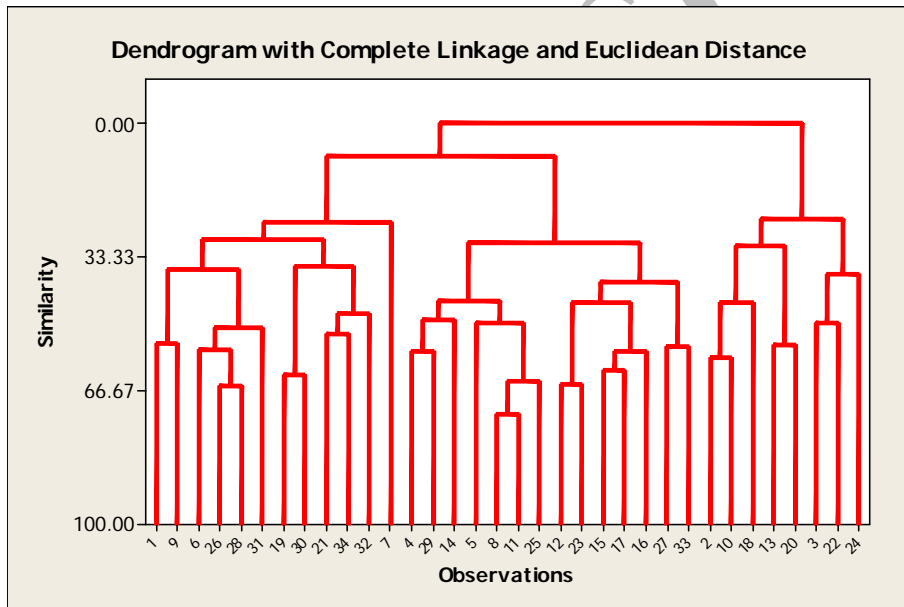
/ /

A. sieberi

/

A. sieberi

(cm)	(cm)	(cm)	(cm)	
/				
/				
/				
/				
/				
/				



Complete

A. sieberi

A. sieberi

/

A. sieberi

A. sieberi

	F			
***	/	/		(°C)
***	/	/		(°C)
***	/	/		(°C)
***	/	/		(°C)
***	/	/		(°C)
***	/	/		(°C)
*	/			(mm)
**	/			(m)
*	/			
ns	/	/		

A. sieberi

	F				
ns	/	/			(ds/m)
		/			
**	/	/			(%)
		/			
*	/	/			(%)
		/			
ns	/	/			(%)
		/			
**	/	/			(%)
		/			
ns	/	/			(%)
		/			
ns	/	/			(%)
		/			
ns	/	/			(%)
		/			
ns	/	/			(%)
		/			
*	/	/			(mg/kg)
		/			

A. sieberi

	F				
ns	/				(mg/kg)
ns	/	/			(mg/kg)
ns	/	/			(mg/kg)
*	/	/			(mg/kg)
***	/				(cm)
***	/				(cm)
***	/	/			(cm)
ns	/	/			(cm)

% /

= *** %

= ** %

= *

= ns

A. sieberi

A. sieberi

...

A. sieberi

()
/ /) *A. sieberi*
(/ / *A. sieberi*
A. sieberi
()
) (*A. sieberi* *A. sieberi*
() *A. aucheri* *A. sieberi*
A. sieberi

A. sieberi

A. sieberi

(:) (A) : ()

()

- 6- El – Demerdash, M. A., Hegazy, A. Kzilay, A. M. 1995. Vegetation – soil relationships in Tihameh coastal plains of Jazan region, Saudi Arabia. *Journal of Arid Environments* 30: 161-174.
- 7- El – Ghareeb, R. & Hassan, I. A. 1989. A phytosociological study on the inland desert plateau of the western Mediterranean desert of Egypt at El – Hammam. *Journal of Arid Environments* 17: 13-21.
- 8- Jensen, E. 1990. Interpretation of environmental gradients which influences sagebrush community distribution in Northeastern Nevada. *Journal of Range Management* 43(2): 161-167.
- 9- Karimpour Reyhan, M. & Amiraslani, F. 2006. Studying the relationship between vegetation and physico – chemical properties of soil, case study: Tabas region, Iran. *Pakistan Journal of Nutrition* 5(2): 169-171.
- 10- Liu, H. Y., Xu, L. H., Chen, C. D., Cui, H. T., & Xu, X. Y. 2002. Vegetation patterns and nature reserve construction in an extremely – arid desert in Anxi, NW China’s Gansu province. *Journal of Environmental Science (China)* 14(3): 380-387.
- 11- Ludwig, J. A., Whitford, W. G. & Comelius, J. M. 1989. Effects of water, nitrogen and sulfur amendments on cover, density and size of Chihuahuan desert ephemerals. *Journal of Arid Environments* 16: 35-42.
- 12- McAuliffe, J. R. 1994. Landscape evolution, soil formation, and ecological patterns and processes in Sonoran desert Bajadas. *Ecological Monographs* 64: 111-148.
- 13- Olsvig – Whittaker, L., Shachak, M. & Yair, A. 1983. Vegetation patterns related to environmental factors in a Negev desert watershed. *Vegetatio* 54: 153-165.

- ...
-
- 14- Podlech, D. 1986. A. . In: Rechinger, K. H. (ed.), Flora Iranica, vol. 158: Compositae VI-Anthemideae. Akademische Druck-u. Verlagsanstalt, Graz, pp. 159-223.
- 15- Shmida, A. 1985. Biogeography of the desert flora. In: Ecosystems of the world: Hot deserts and arid shrublands, vol. 12A. Elsevier, Amsterdam, pp. 23-77.
- 16- Wondzell, S. M., Cunningham, G. L. & Bachelet, D. 1996. Relationships between landforms, geomorphic process, and plant communities on a watershed in the Northern Chihuahuan desert. *Landscape Ecology* 11(6): 351-362.

Archive of SID

Investigation of ecological range and its effects on vegetative characteristics of *A. sieberi* populations in Iran

H. Azarnivand^{*1}, M. Rabie², A. Jalili³, H. Arzani⁴ and Y. Asri⁵

¹ Associate Prof., Faculty of Natural Resources, University of Tehran, Karaj, I.R.Iran

² Ph. D. of Range Management, University of Tehran, Karaj, I.R.Iran

³ Professor, Research Institute of Forests and Rangelands, Tehran, I.R.Iran

⁴ Professor, Faculty of Natural Resources, University of Tehran, Karaj, I.R.Iran

⁵ Assistant Prof., Research Institute of Forests and Rangelands, Tehran I.R.Iran

(Received: 09 June 2008, Accepted: 19 November 2008)

Abstract

With respect to wide distribution of *A. sieberi* Besser in Iran, various studies have been done on its habitats and different ecological properties have been referred as effective factors in establishment of this species. In this research, we tried to study the ecological range of *A. sieberi* and its relationship with vegetative characteristics. Therefore, climate properties including annual precipitation, number of days with precipitation, annual, minimum and maximum temperature, absolute minimum and maximum temperature; topographic property including altitude; edaphic properties including pH, EC, SP, texture, lime, gypsum, C, Na, K, Ca, Mg, N and P; and vegetative characteristics including large and small diameter of canopy, height of plant and diameter of most thickness branch were measured in 34 populations. For determination of ecological range, normal curve with histogram of frequency have been drawn for total properties. All populations divided in 3 groups by cluster analysis. Measured properties compared by analysis of variance between 3 groups. The significant properties were: average of annual, minimum and maximum temperature, absolute minimum and maximum temperature, large and small diameter of canopy and height of plant in 0.1 % probability level, altitude and C in 1 % probability level, while annual precipitation, number of days with precipitation, N, P and Na in 5 % probability level.

Keywords: *A. sieberi*, Ecological range, Vegetative characteristics, Ecological characteristics, Frequency histogram, Cluster analysis, Analysis of variance, Iran

*Corresponding author: Tel: +98 261 2249313 , Fax: +98 261 2249313 , E-mail: hazarnivand@chamran.ut.ac.ir