
Azhdari et)

(al., 2008

Fazilati &)

(Hosseini Araghi, 1965

(Arzani, 2004)

(Amiri, 2007)

Moghadam,)

(2007)

(1998)

GIS

(2007)

(2005)

(2007)

(1976)

(1986)

(1991)

(1960)

(1974)

()

)

/

.(

EPM

.()

(

)

EPM

(2006)

Arc GIS

.(

)

(2006)

.()

.()

(2006)

*	()		
			S ₂ S ₁
			S ₂ S ₁
			S ₁
			S ₂
			S ₂
			S ₃
			S ₃
			S ₂
			S ₂
			S ₃
*			S ₃

				<i>Ag in-As co</i>
				<i>Ag in-As co</i>
				<i>Ag in-As co</i>
				<i>Ag in-As co</i>
				<i>Ag in-As ve-Br to</i>
				<i>Ag in-Fe ov</i>
				<i>Ag in-Fe ov-Di ca</i>
				<i>Ag in-Th ko</i>
				<i>Ag in-Th ko</i>
				<i>As go-Ag in</i>
				<i>As go-Ag in</i>
				<i>As go-Ag in</i>
				<i>As go-On co-Ag in</i>
				<i>As ve- Ag in</i>
				<i>As ve- Ag in</i>

*

					<i>As ve- Ag in</i>
					<i>As ve- Ag in</i>
					<i>As ve- Ag in</i>
					<i>As ve- Ag in</i>
					<i>As ve- Ag in</i>
					<i>As co-Ag tr</i>
					<i>As co-Ag tr</i>
					<i>As co-Ag tr-Di ca</i>
					<i>As ve-Ci ar</i>
					<i>As co-Ci ar</i>
					<i>As ur-Di ca</i>
					<i>As ur-Di ca</i>
					<i>As co-Ec ro</i>
					<i>As ve-On co</i>
					<i>As ve-On co</i>
					<i>As ve-On co-Ac ta</i>
					<i>As co-On co-Ci ar</i>
					<i>As co-Th ko</i>
					<i>Di ca- Ag in</i>
					<i>Di ca- As ve</i>
					<i>Di ca- As ve</i>
					<i>Di ca- On co</i>
					<i>Di ca- On co</i>
					<i>Di ca- On co</i>
					<i>Di ca-Rh ri</i>
					<i>On co- Ag in</i>
					<i>On co- As ve</i>
					<i>On co- Di ca</i>
					<i>On co- Di ca</i>
					<i>Pr ul- Ag in</i>
					<i>Pr ul-Th ko</i>
					<i>Ag in-Pr ul</i>

(1989)

()

%

Archive of SID

(2007)

(2004)

(2006)

(2007)

(1960)

(2001)

»

(1986)

«

%

(1994)

%

%

%

)

)

(

(

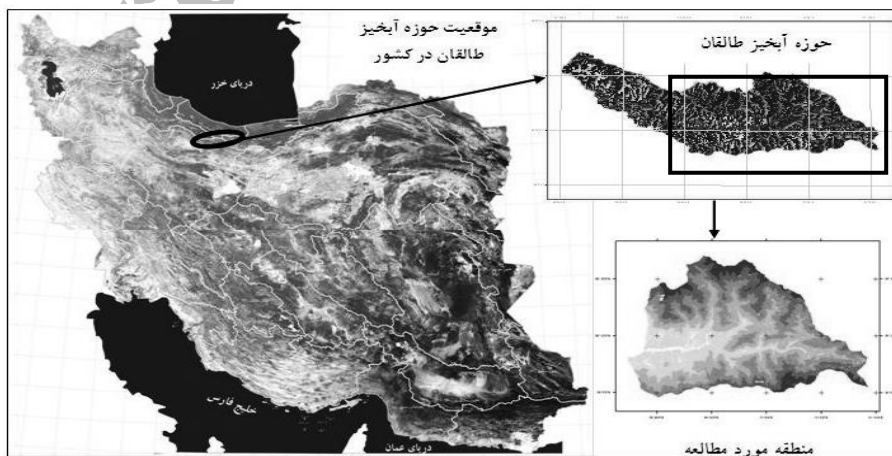
(1991)

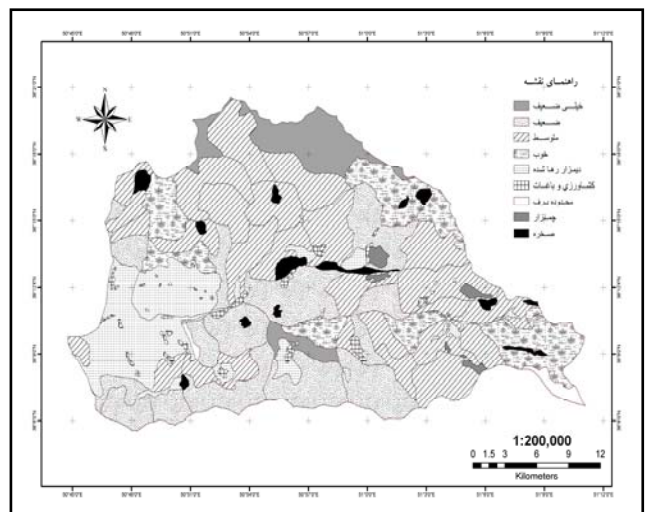
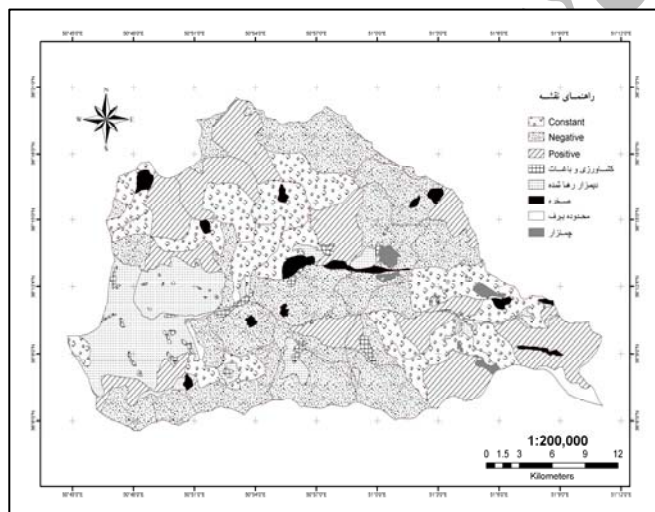
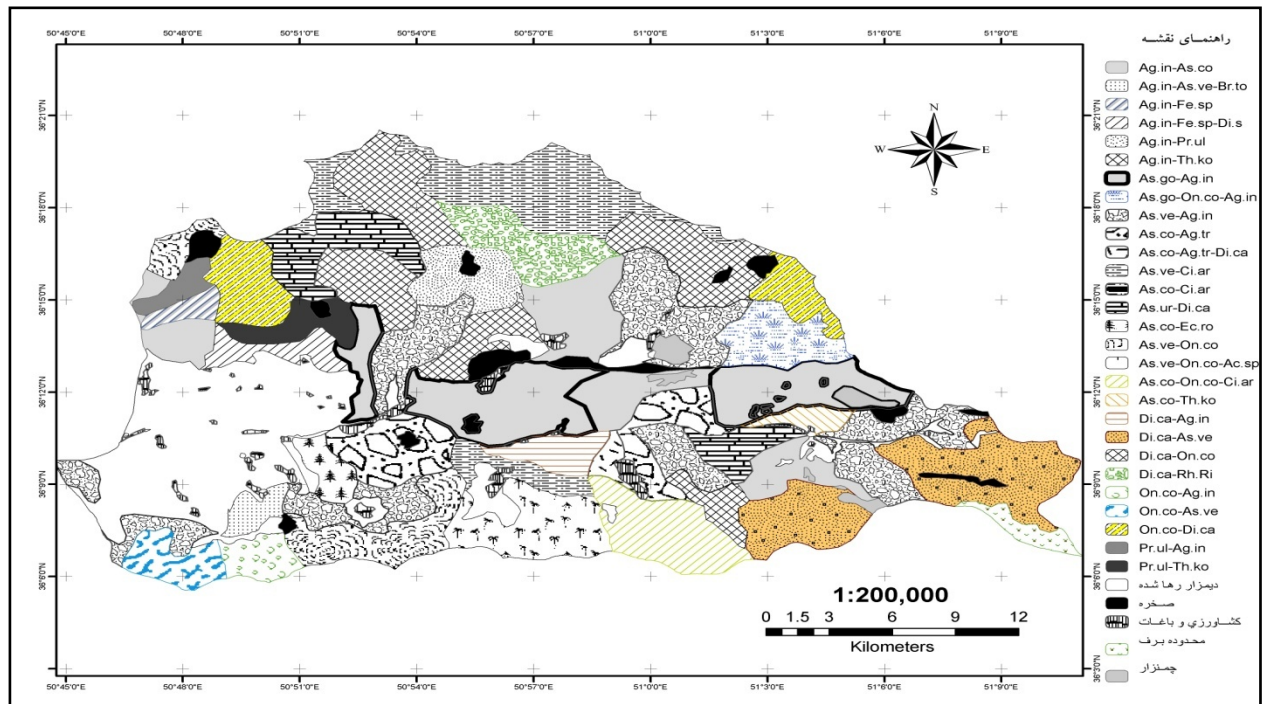
%

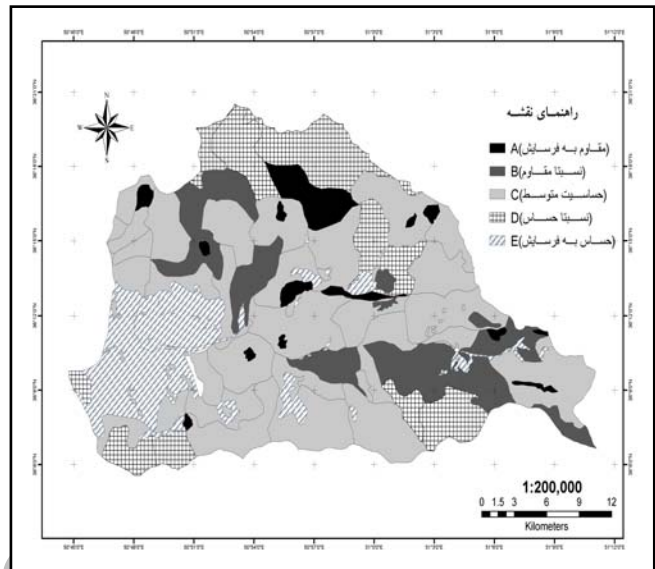
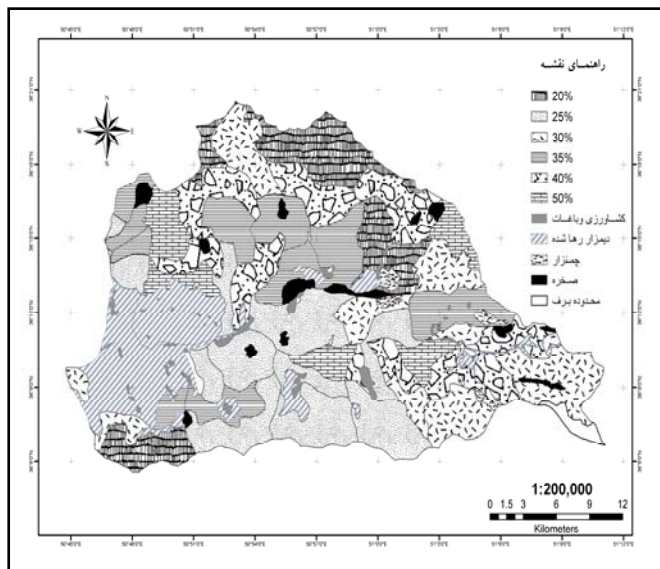
%

(2003)

(2007)







- 1- Alizadeh, E., 2006. Classification of range sustainability by GIS (Case study: Semirom, Esfahan). Ms.c Thesis for natural resources Faculty. Tehran University. Iran.
- 2- Amiri, F. 2007, Multi purpose model for range by using GIS (Study case: Ghara aghagh Semirom catchment). Ph.D thesis for Azad University. Science and research unit. Tehran.Iran.
- 3- Arzani, H. 1994. Some aspects of estimating short and long term rangeland carrying capacity in the Western Division of New South Wales.P.H.D.Thesis. University of New South Wales. Australia.
- 4- Arzani, H. 1997. Handbook for assessment and classification of range condition (reduced 4 factor methods). Research institute of forests and rangelands. Iran.
- 5- Arzani, H. 2004. Booklet of assessment and analyzing course of natural resources Faculty. University of Tehran.
- 6- Arzani, H. 2006. Booklet of animal and rangeland relation course of natural resources Faculty. University of Tehran.
- 7- Arzani, H., Sh. Yousefi., M. Jaafari & M. Farahpour. 2005. Determining sustainability model in rangeland for sheep grazing by GIS (given study: Taleghan region). Mohit shenasi journal. 37 issue: 59-68.
- 8- Azhdari, GH. H. Arzani., A. Tavili & G. Fegghi. 2008. Determining criteria of allowable use for classification of natural vegetation in Taleghan Catchment. Ms.c Thesis for natural resources Faculty. Tehran University. Iran.

-
- 9- Biniiaz, M., 2007, Determining criteria range sustainability for cattle grazing and compare it with sheep (Study case: Sorkh abad Mazandaran province). Ms.c Thesis for natural resources Faculty. University of Tehran. Iran.
 - 10- Fazilati, A. & H. Hosseini Araghi., 1965. Country Rangelands and management, adjustment and reclamation methods of it. Range engineering office press.
 - 11- Klipple, G.E., & D.F. Costello. 1960. Vegetation and cattle response to different intensities of grazing on shortgrass ranges of the Central Great Plains. U.S. Dep. Agric. Tech. Bull. 1216.
 - 12- Moghadam, M. R., 1998. Range and Range management. University of Tehran Press.
 - 13- Pieper, R.D., E.E. Parker, G.B. Donart, & J.D. Wright. 1991. Cattle and Vegetational response to four-pasture and continuous grazing system. N. Mex. Agric. Exp. Sta. Bull. 576.
 - 14- Reece, P.E., J.D., Alexander. & J.R., Johnson. 2001. Drought Management on Range and Pastureland. A handbook for Nebraska and South Dakota. Director of Cooperative Extension, University of Nebraska. Institute of Agriculture and Natural Resources.
 - 15- Ruyle, George B. 2003. Rangeland livestock production: developing the concept of sustainability on the Santa Rita Experimental Range. pp 34-47. In Mitchel P. McClaran, Peter F. Ffolliott, and Carleton B. Edminster (coordinators). Santa Rita Experimental Range: 100 years (1903 to 2003) of accomplishments and contributions. USDA Forest Service Rocky Mountain Research Station Proceedings RMRS-P-30. Ogden, Utah.
 - 16- Sims, P.L., B.E. Dahl, & A.H. Denham. 1976. Vegetation and livestock response at three grazing intensities on sandhill rangeland in eastern Colorado. Colo. State Univ. Exp. Sta. Tech. Bull. 130.
 - 17- Smith, L., G. Ruyle., J. Maynard., S. Barker & et al., 2007. Principles of Obtaining and Interpreting Utilization Data on Rangelands. The University of Arizona Cooperative Extension.
 - 18- Smoliak, S. 1974. Range vegetation and sheep production at three stocking rates on *Stipa Bouteloua* prairie. J. Range Manage. 27: 23-26.
 - 19- Society for Range Management. 1989. A glossary of terms used in range management. 3d ed. Society for Range Management, Denver, CO.
 - 20- Willms, W.D., S. Smoliak, & G.B. Schaalje. 1986. Cattle weight gains in relation to stocking rate on rough fescue grassland. J. Range Management. 39:182-187.
 - 21- Wissler, C., & D.Ph., Guertin. 1991. A spatial modelling approach to predicting forage production and utilization in semi-desert grassland. In: Resource technology, 90 pp. 617-627.
 - 22- Yousefi, Sh., 2004. Classification of range sustainability in Taleghan by GIS. Ms.c Thesis for natural resources Faculty. University of Tehran. Iran.

Determining Criteria of Utilization Level in Different Types of Taleghan Rangelands

Gh. Azhdari^{*1}, H. Arzani², A. Tavili³ and J. Fegghi³

¹ M.Sc. Graduate, Faculty of Natural Resources, University of Tehran, Karaj, I.R. Iran

² Professor, Faculty of Natural Resources, University of Tehran, Karaj, I.R. Iran

³ Assistant Prof., Faculty of Natural Resources, University of Tehran, Karaj, I.R. Iran

(Received: 01 June 2009, Accepted: 22 September 2009)

Abstract

The proper and suitable utilization of rangelands will cause their sustainable utilization and decrease range degradation. It also promotes range condition and plant composition. So the objective of present research was identification of criteria to help range managers to choose proper utilization level. To do this, Taleghan catchment was selected. Criteria of soil sensitivity to erosion, range condition and trend were considered. Vegetation types were considered as management unit and in each vegetation types, sensitivity of soil to erosion, range condition and trend were evaluated. Based on the mentioned factors the proper utilization factor was determined. According to the results, proper utilization factor in Taleghan rangelands varies between 20-50% depending on the criteria condition in each vegetation type. Consequently, map of allowable use in the study region was prepared. Generally, in Taleghan rangelands allowable use depends on criteria and differs among vegetation types.

Keywords: Allowable use, Taleghan, Range condition, Range condition trend, Soil sensitivity to erosion.

*Corresponding author: Tel: +98 711 8229916 , Fax: +98 711 8229916 , E-mail: ghazhdari@gmail.com