

/// :

/// :

\*

...

(Sp, St, Sh, Sl, Sr, Sm, Se)

(Gcm, Gms, Gt)

(Sr(Fl), Sr/Fl, Fl(SR))

(Fl)

:

:

\*

(Ingersoll

(Stocklin et al.

et al. 1984)

1964, Kushan 1978)

(Folk

( )

1980)

( )

(Dickson 1966)

( )

(Huckriede et al. 1962)

( )

( )

.(

(Kwon et al.

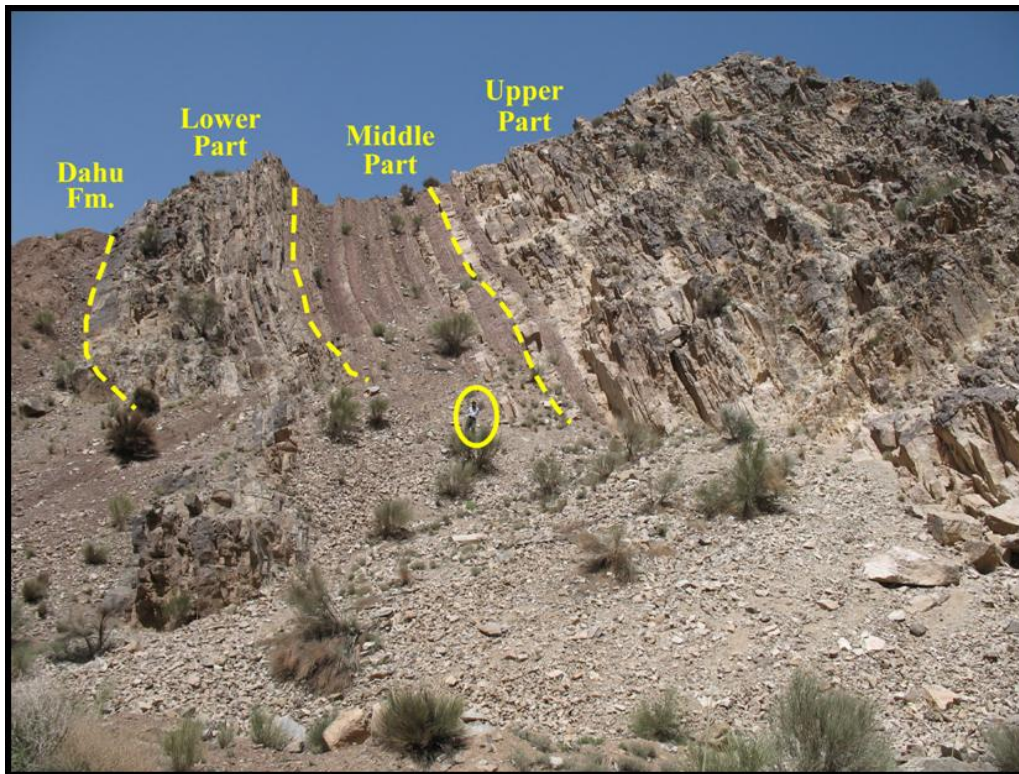
2006)

(Miall 1996, 2000)

.( )

:( )

Archive of SID



( ) :

(Gcm)

(Kostic et al. 2005)

Gcm

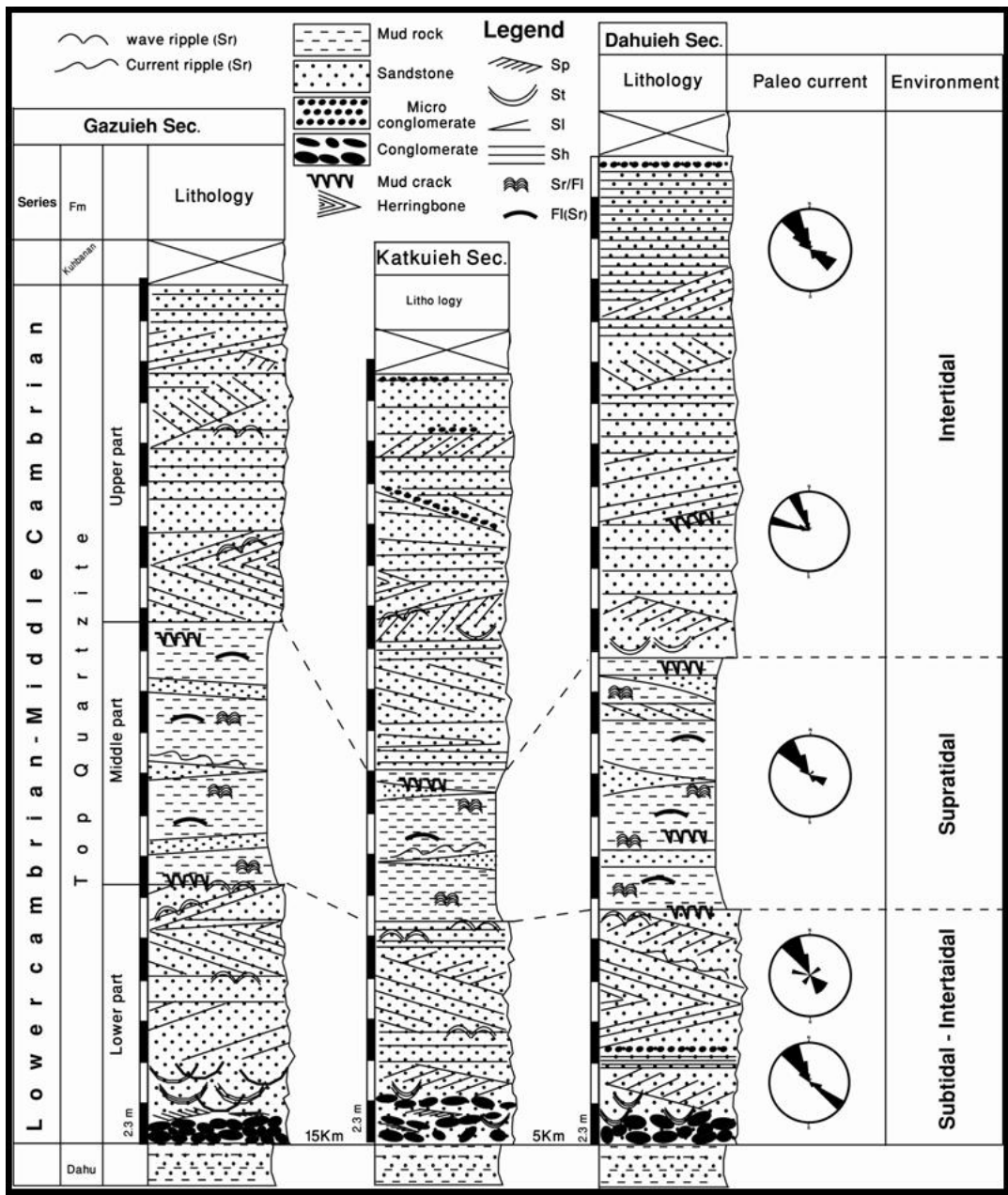
( A )

Gms

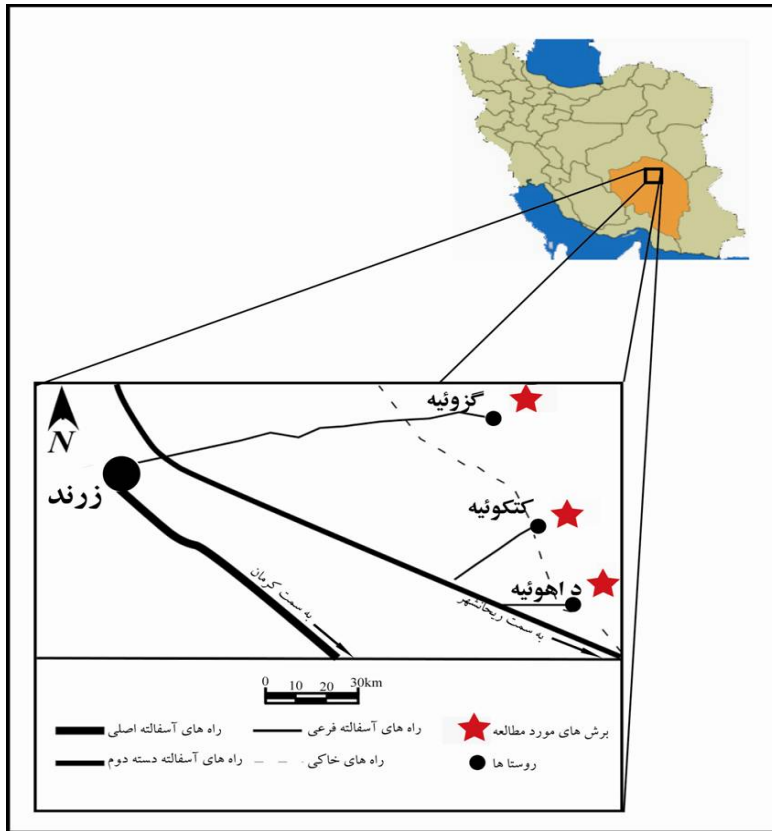
(Petit et al.

.2005; Ito et al. 2006)

( )



( )



(Gt)

(Gms)

Gcm

c )

( B )

Gms

(Miall 2000; Raj 2007)

A,C ) Sp (Miall 2000)

St

(Lee and Chough 2006)

(Sh)

(Sp)

)

( )

( B,F

( )

( B,D )

Sh

( D )

(Tucker

)

/

.2001)

(

Sh

(Harms et al. 1982)

(Miall 2000; Lee and

Chough 2006)

(Therrien 2006)

Sp

( E )

(SI)

( B,F )

(Strand 2005)

Sh,

Sr

Sr Sp

(St)

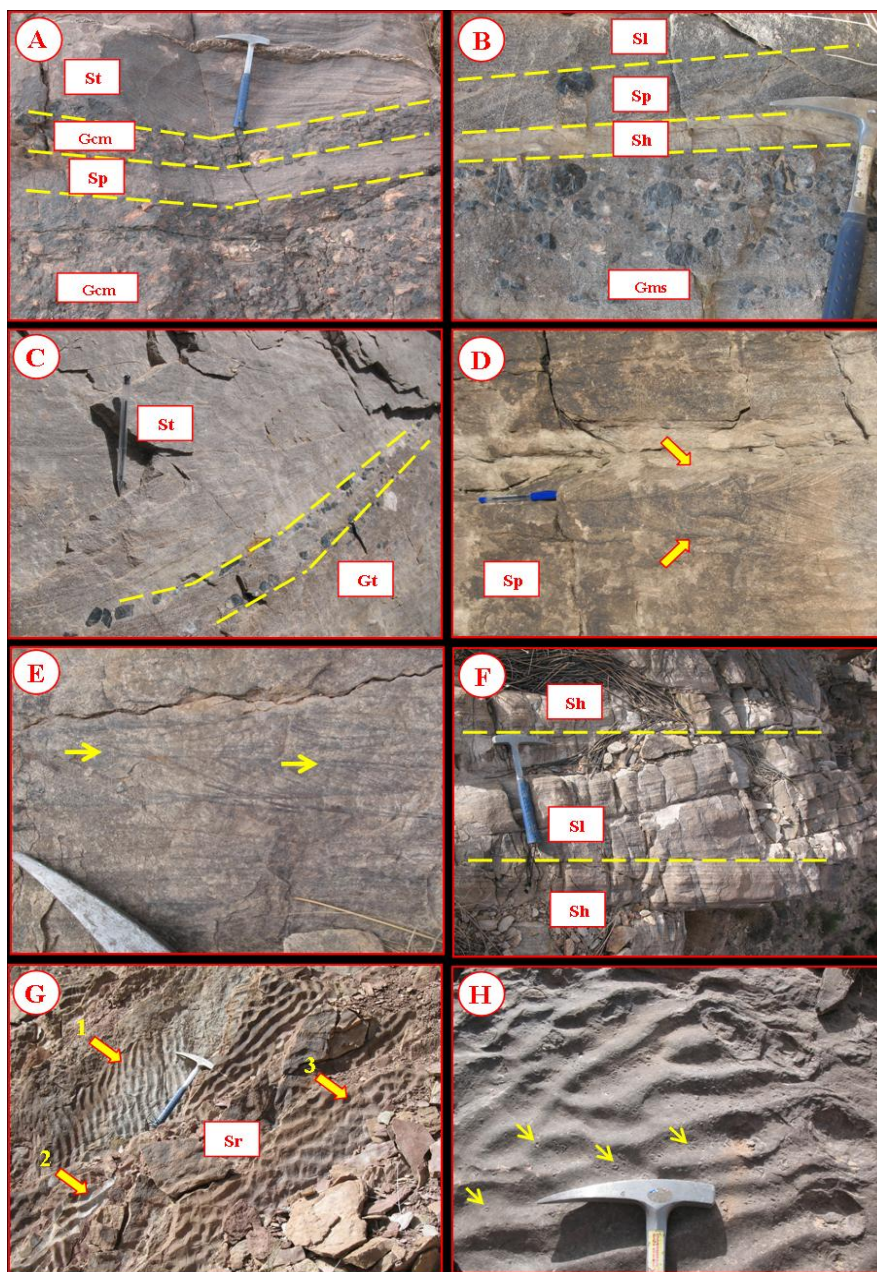
(Kostic et al. 2005)

(Khalifa et al. 2006)

:

	Gcm			
	Gms			
	Gt		( )	
	Sp	( )		
	St		( )	
	Sh		( )	
	Sl	( )	( )	
	Sr			
	Sm			
	Se			
	Sr(Fl)			
	Sr/Fl			
	Fl(Sr)			
	Fl			





(Gcm) A .  
 (Gms) B St Sp  
 (Gt) C .Sl Sp, Sh  
 D .(St)  
 Sr F .  
 ( ) H G . : 3 :2 :1



(Sr)

Sr

( G,H )

( ) Fl

( A ) ( H )

(Fl) ( B )

Sr, Sh, Sp (Harms et al. 1982)

( E )

(Lewis and McConchie 1994)

Fl

(Sm)

Sm

( C )

(Miall

.1996; Tucker 2001)

.(Harms et al. 1982; Miall 2000)

(Se)

Sp,

( D ) Sl, Sh

( )

( A )

( F )

(Tucker Sr/Fl)

.2001; Strand 2005)

( G )

Fl(Sr)

( )

)

(

Sr/Fl

)

( )

( H )

(

(Tianrui

(Tucker 2001; Strand 2005;

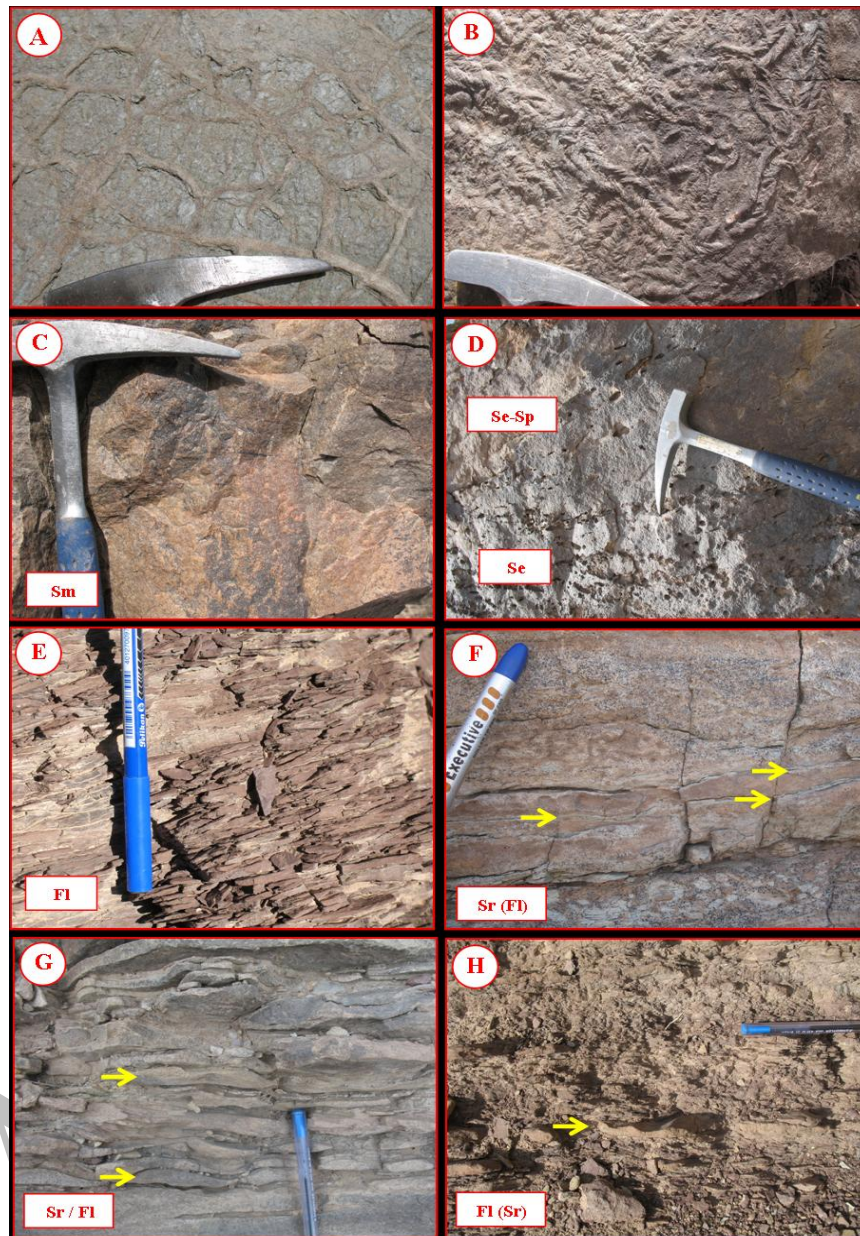
1991)

.Chakraborty and Sensarma 2008)

( )

)

(



B. A. :  
 (Se) C.(Sm)

D. Sp E.

H. G.  
 ( )

( B )

( )

)

(

.( C )

( E )

)

.(Chakraborty and Sensarma 2008

)

(

)

(

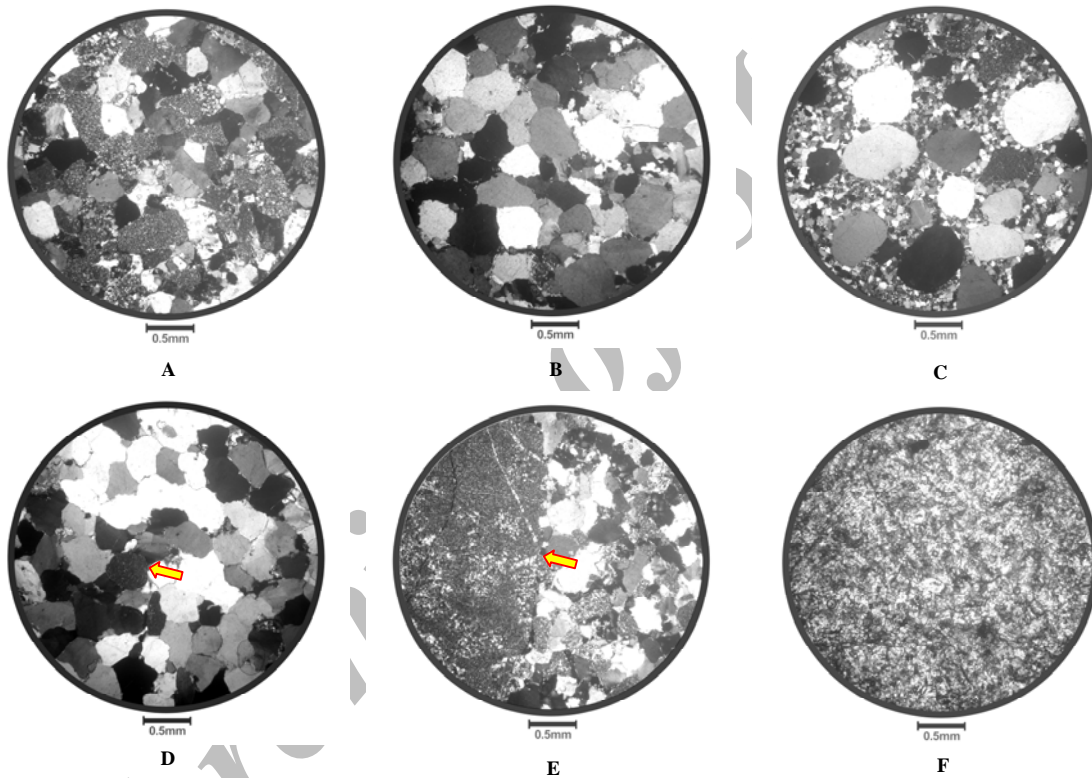
( F )

( )

( D )

Archive of SID

(Klein, 1971)



**A.** **B.** **C.**  
**D.** **E.** **F.**  
**A. (XPL)** **B.** **C.** **D.** **E.** **F.**  
**E.** **F.**  
**F.**

(Kumar et al. 2007)

Sp,

SB

St, Sh, Sr, Sl, Sm

Gcm

(Miall 2000)

LA

)

(

( )

Klein 1971; Reading and )

( )

Collinson 1996; Einsele 2000; Khalifa et al. 2006; Chakraborty and Sensarma 2008; Folkestand and ( ) .Satur 2008)

(Reading and Collinson 1996; Strand, 2005)

(Gade et al. 2008)

(Dalrymple 1992; Chakraborty and Sensarma

.2008)

(Miall 1996; Lowey

.2007)

CH

(Folkestand and Satur 2008)

SB GB

GB

Gcm, Gms, Gt

( )

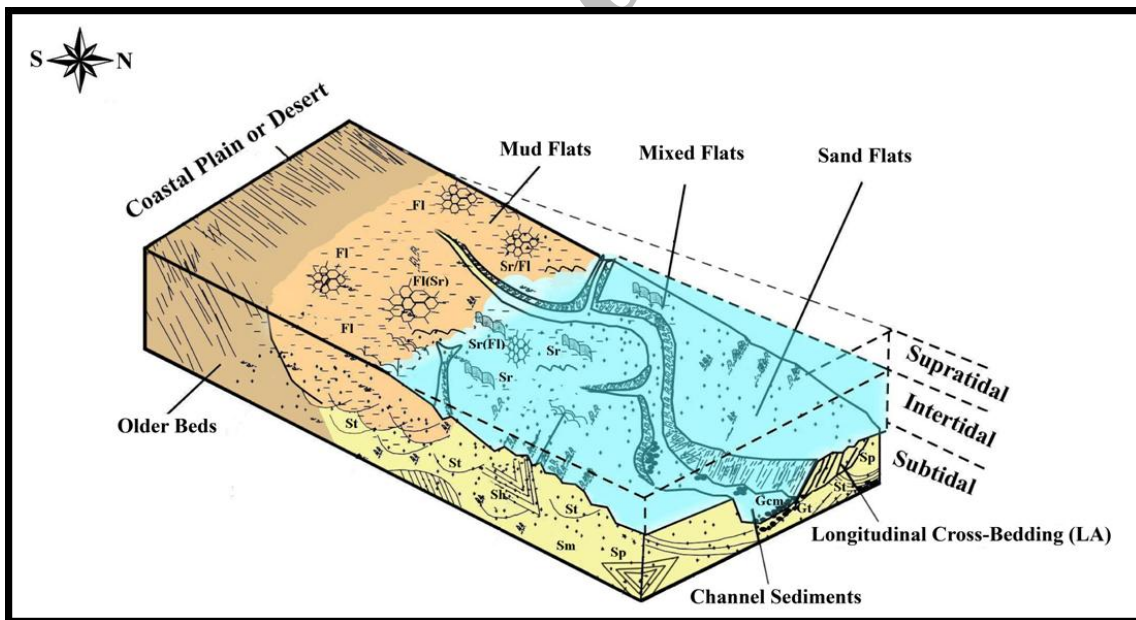
( )

.(Strand 2005)

(Klein 1971; Reading

and Collinson 1996; Tucker 2001; Khalifa et al.  
.2006)

.(Khalifa et al. 2006 )



(Passive margin)

( )



Fl FF

( ) CR

Sr, Sp, Sh

Sr Sp, Sh

Fl

( )  
( ) ( )

Einsele 2000; Khalifa et al. )

(2006, Chakraborty and Sensarma 2008

Gcm, Gms, Gt, Sp, St,

Sh, Sl, Sr, Sm, Se, Fl, Sr(Fl), Sr/Fl, Fl(Sr)

(CR )

(Kuecher et al. 1990)

.(Khalifa et al. 2006)

succession, central India: Precambrian Research, v.162, p. 284–301.

Dalrymple, R.W., 1992, Tidal depositional systems. In: Walker, R.G., James, N.P. (Eds.), Facies Models, Response to Sea Level Change: Geological Association of Canada, Toronto, p.195–218.

Dickson, J.A.D., 1966, Carbonate identification and genesis as revealed by staining: Journal of Sedimentary Petrology, v. 36, p.441-505.

Einsele, G., 2000, Sedimentary Basin Evolution, Facies and Sediment Budget: (2nd edition), Springer-Verlag, 792p.

Folk, R.L., 1980, Petrology of Sedimentary Rocks: Hemphill Publishing Co., Austin, Texas, 182p.

Folkestad, A., and N. Satur, 2008, Regressive and transgressive cycles in a rift-basin: Depositional model and sedimentary partitioning of the Middle Jurassic Hugin Formation, Southern Viking Graben, North Sea: Sedimentary Geology xxx, p.1-19.

Harms, J.C., J.B. Southard, and R.G. Walker, 1982, Structures and Sequence in Clastic Rock: SEPM (Society of Economic Paleontologists and Mineralogists), Short Course, Chapter 1, 55p.

Kuecher, G.J., B.G. Woodland, and F.M. Broadhurst, 1990, Evidence of deposition from individual tides and of tidal cycles from the Francis creek Shale (host rock to the Mazon Creek biota), Westphalin (Pennsylvanian), north-eastern Illinois: Sedimentary Geology, v.68, p. 211–221.

Gade, M., W. Alpers, C. Melsheimer, and G. Tanck, 2008, Classification of sediments on exposed tidal flats in the German Bight using multi-frequency radar data: Remote Sensing of Environment, v.112, p.1603–1613.

Huckriede, R., M. Kursten, and H. Venzlaff, 1962, Zur Geologie, Des Gebietes Zwischen Kerman and Saghad (Iran): Beih. Geo. Jarb, Report.51: 197p.

Ingersoll, R.V., T.F. Bullard, R.L. Ford, J.P. Grimm, J.D. Pickle, and S.W. Sares, 1984, The effect of grain size on detrital modes: A test of the Gazzi-Dickinson point – counting method: Journal of Sedimentary Petrology, v.54, p.0103-0116.

Ito, M., M. Matsukawa, T. Saito, and D.J. Nichols, 2006, Facies architecture and

CH, GB,

SB, LA

FF

CR

( )

( )

Chakraborty, T., and S. Sensarma, 2008, Shallow marine and coastal eolian quartz arenites in the Neoproterozoic Karutola Formation, Dongargarh Volcano-sedimentary

- mud/sand-rich turbidite system: *Sedimentary Geology*, v.198, p.273–291.
- Miall, A.D., 1996, *The Geology of Fluvial Deposits: Sedimentary Facies, Basin Analysis and Petroleum Geology*: Springer-Verlag, New York, 582p.
- Miall, A.D., 2000, *Principle of Sedimentary Basin Analysis*: Springer- Verlag, New York, 668p.
- Petit, F., F. Gol, G. Houbrechts, and A.A. Assani, 2005, Critical specific stream power in gravel-bed rivers: *Geomorphology*, v.69, p.92-101.
- Raj, R., 2007, Late Pleistocene fluvial sedimentary facies, the Dhadhar River basin, Western India, *Quaternary International*, v.159, p.93-101.
- Reading, H.G., and J.D. Collinson, 1996, Clastic coastal, In Reading, H.G., (Ed.), *Sedimentary Environment and Facies*: Black well Scientific Publication, Ltd Oxford, p.154-231.
- Strand, K., 2005, Sequence stratigraphy of the siliclastic east Puolanka Group the Palaeoproterozoic Kainuu Belt, Finland: *Sedimentary Geology*, v.176, p.149-166.
- Stocklin, J., A. Ruttner, and M.H. Nabavi, 1964, New data on the lower Paleozoic and Pre-Cambrian of north Iran: *G. S. Iran, Report 1*, 29p.
- Tianrui, S., 1991, Textural maturity of arenaceous rocks derived by microscopic grain size analysis in thin section, In: Syvitski, P.M. (Ed.), *Principles, Methods and Application of Particle Size Analysis*: Cambridge University Press, Cambridge, UK, p.163-173.
- Tucker, M.E., 2001, *Sedimentary Petrology*: Third Edition, Blackwell, Oxford, 260p.
- Therrien, F., 2006, Depositional environments and alluvial system changes in the dinosaur-bearing Sânpetru Formation (Late Cretaceous, Romania): Post-orogenic sedimentation in an active extensional basin: *Sedimentary Geology*, v.192, p.183–205.
- paleohydrology of a synrift succession in the Early Cretaceous Choyr Basin, Southern Mongolia: *Cretaceous Research*, v.27, p.226-240.
- Khalifa, M.A., H.E. Soliman, and H.A. Wanas, 2006, The Cambrian Araba Formation in northeastern Egept: facies and depositional environments: *Journal of Asian Sciences*, v.27, p.873-884.
- Klein, G., 1971, A sedimentary model for determining paleo tidal range: *Geol. Soc. Am. Bull.*, v.82, p.2585-2592.
- Kostic, B., A. Bech, and T. Aigner, 2005, 3-D sedimentary architecture of a Quaternary gravel delta (SW-Germany): Implication for hydrostratigraphy: *Sedimentary Geology*, v.181, p.143-171.
- Kumar, R., N. Suresh, J. Satish, J. Sangode, and V. Kumaravel, 2007, Evolution of the Quaternary alluvial fan system in the Himalayan foreland basin, Implications for tectonic and climatic decoupling: *Quaternary International*, v.159, p.6-20.
- Kushan, B., 1978, Stratigraphy and trilobite fauna of the Mila Formation (Middle Cambrian-Tremadocian) of the Alborz Range, north Iran: *Geological and Mineral Survey of Iran, Report 49*, 70p.
- Kwon, Y.K., S.K. Chough, D.K. Choi, and D.J. Lee, 2006, Sequence stratigraphy of the Taebaek Group (Cambrian-Ordovician), Mideast Korea: *Sedimentary Geology*, v.192, p.19-55.
- Lee, H.S., and S.K. Chough, 2006, Lithostratigraphy and depositional environments of the Pyeongan Super group (Carboniferous-Permian) in the Taebaek area mid-east Korea: *Journal of Asian Earth Sciences*, v.26, p.339-352.
- Lewis, D.W., and D. McConchie, 1994, *Analytical Sedimentology*: Chapman and Hall, London, 197p.
- Lowey, G.W., 2007, Lithofacies analysis of the Dezadeash Formation (Jura–Cretaceous), Yukon, Canada: The depositional architecture of a