

/// : - - -
/// :

*

Archive of SID

Email: Kamalimr@ripi.ir

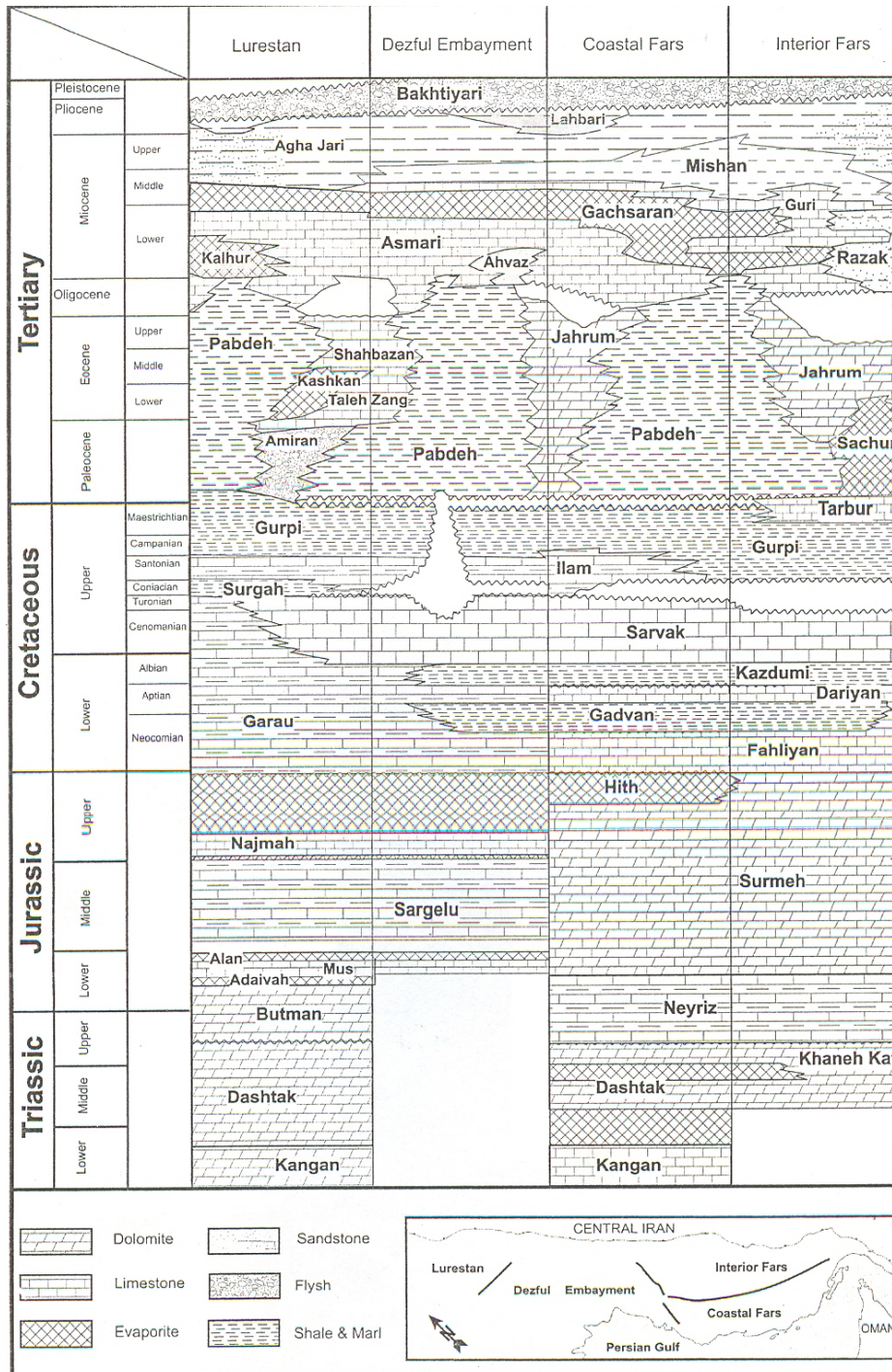
* نویسنده مسئول :

(Burwood and Bordenave 1990 Stonely 1990)

Archive of SID

()

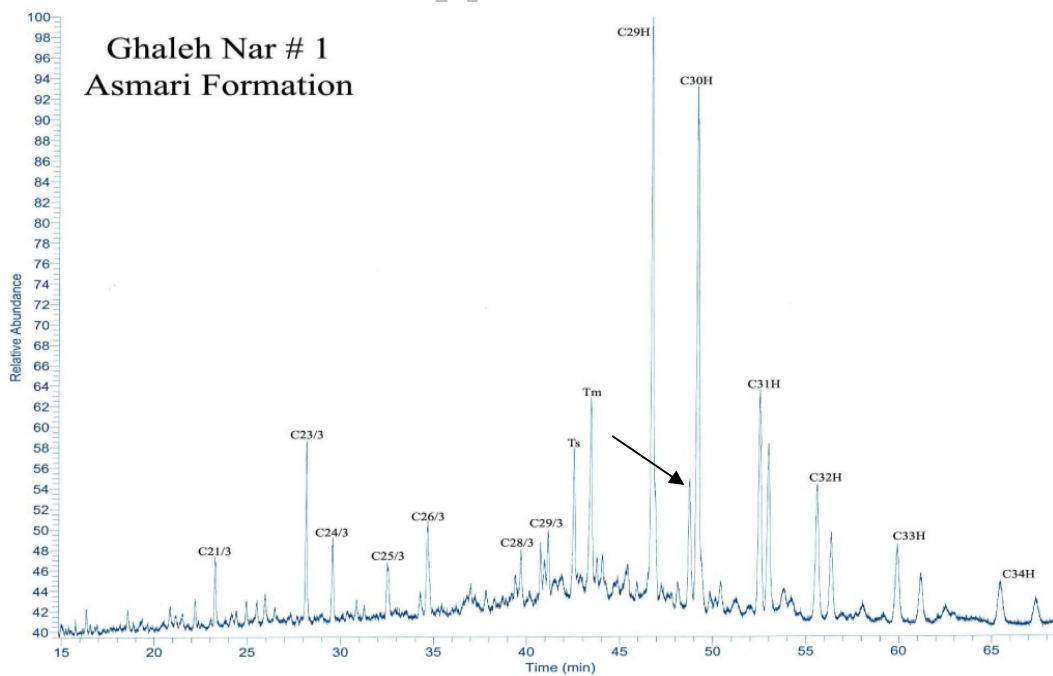
GCMS



Bordenave & Burwood (1990)

GCMS

()



()

GCMS :

()
()

0.98 C29/C30

Okui and Yokoyama)

.(2002

Pr/Ph

0.72

Archive of SID

()

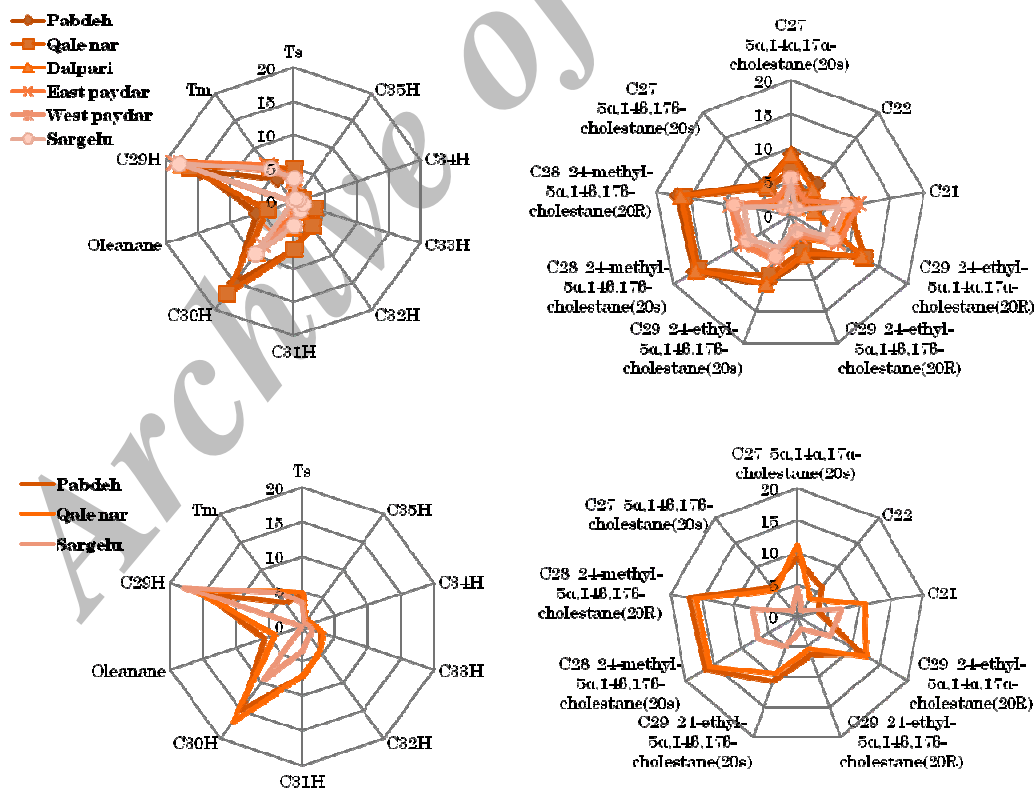
()

()

...

API

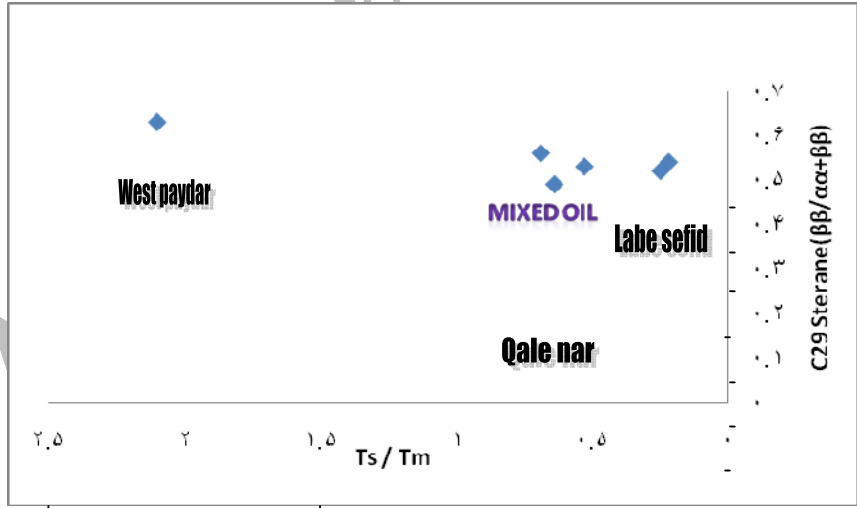
Physical & Geochemical Properties	West paydar	Qalenar	Labe sefid
API Gravity (degree)	21.75	28.22	34.36
Specific Gravity (g/ml)	0.92	0.88	0.9
Sulphur content (%)	3.48	1.65	0.68
Wax content (%)	4.19	6.95	7.2
Saturates	43.47	49.86	64.8
Aromatics	40.47	37	26
Resin	11.039	8.13	7.32
Asphaltene	4.39	4.12	1.8
Ni/V	0.23	0.53	0.81
Pr/Ph	0.56	0.72	0.96
CPI	0.95	0.96	1.21
20s/20s+20r	0.61	0.53	0.5
Iso/Iso+Normal	0.93	1.2	1.25
Ts/Ts+Tm	0.17	0.41	0.69
Carbon Isotope Ratio	-27.66	-25.42	-24.5

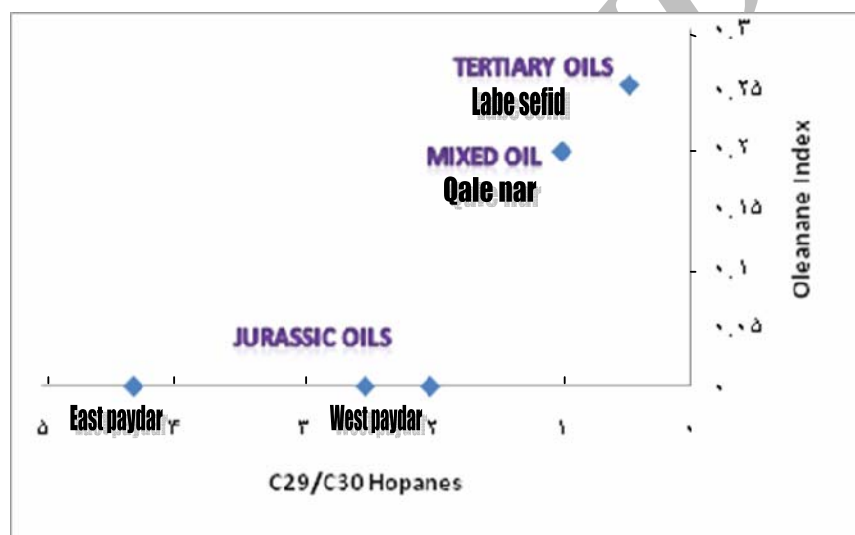


)

(

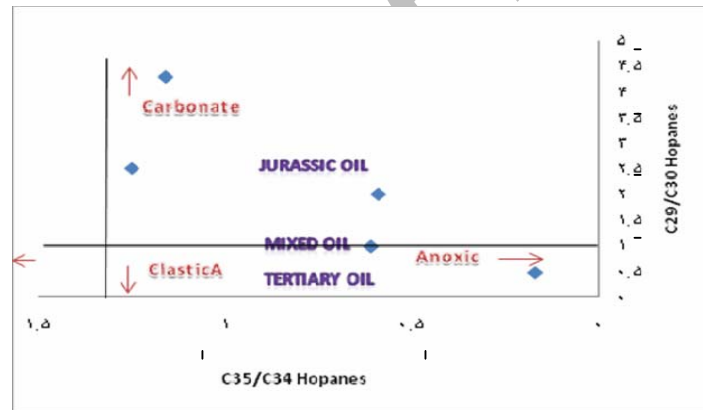
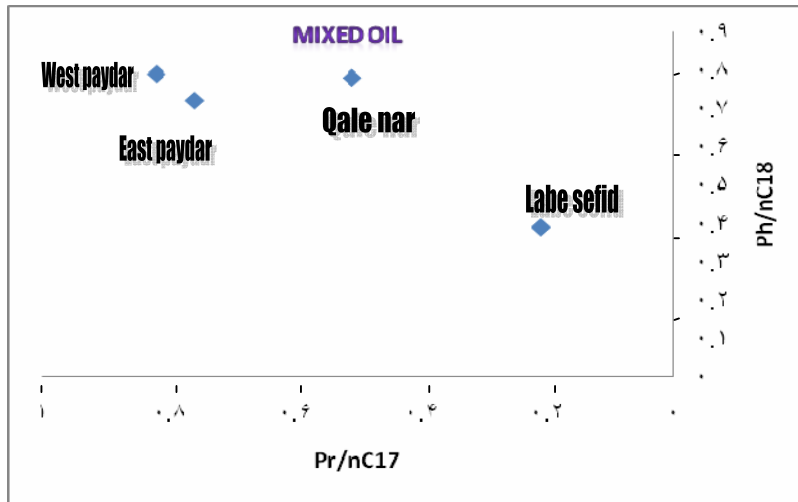
of SID





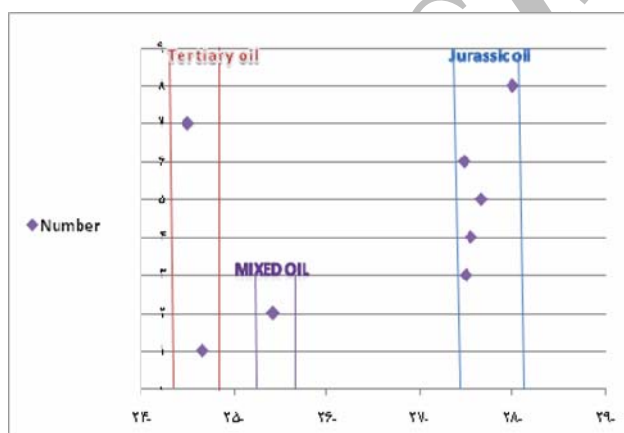
Arch

—
C30 C29



()

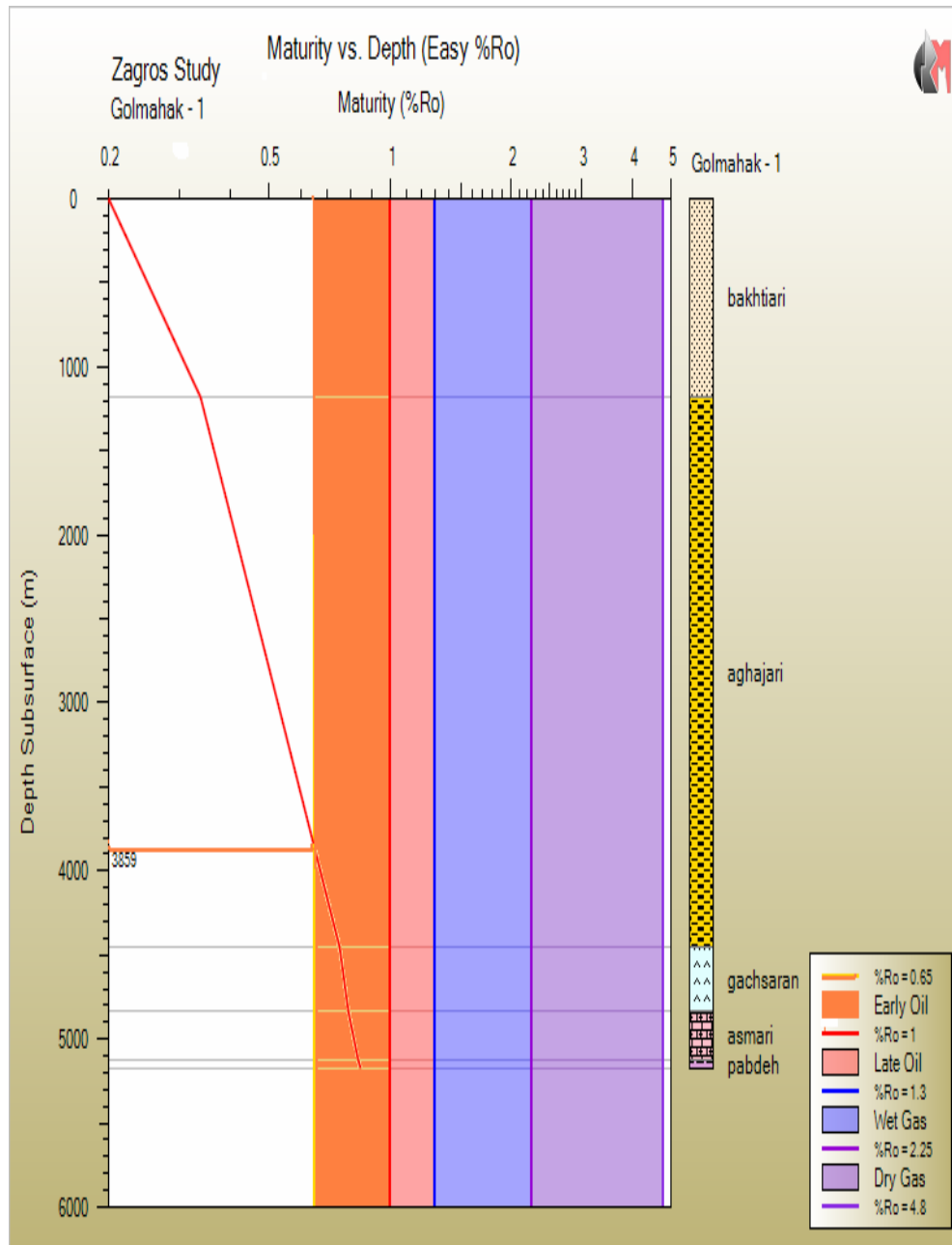
Oil samples	Number	Carbon Isotopes
Labe sefid	1	-24.66
Qale nar	2	-25.42
Dalpari	3	-27.5
Cheshme khosh	4	-27.55
West paydar	5	-27.66
East paydar	6	-27.48
Pabdeh	7	-24.5
Sargelu	8	-28



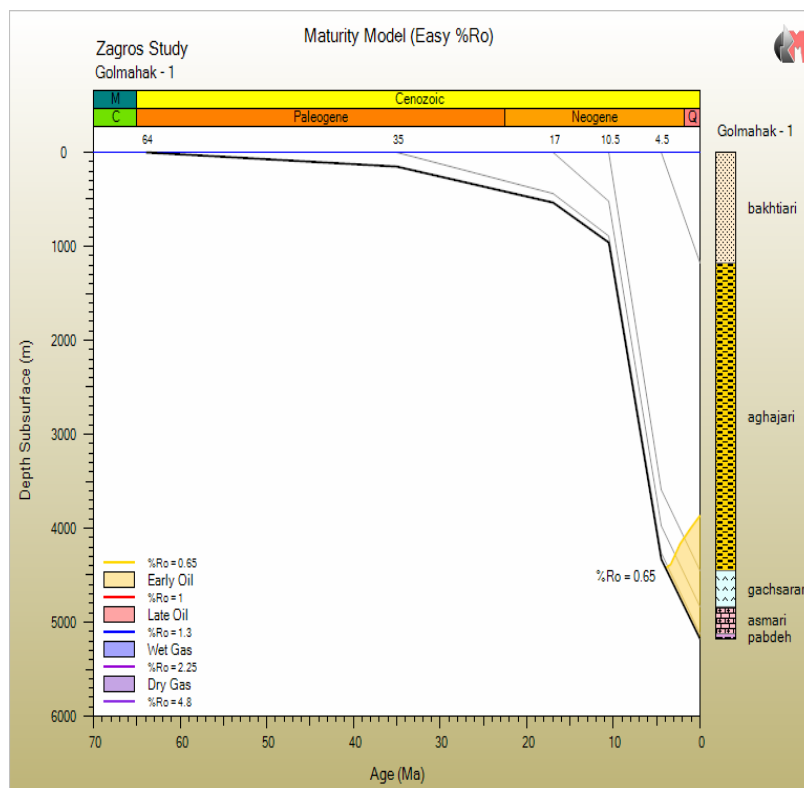
Pars Basin Modeler (PBM)

.()

-



:



-Yokoyama & Okui . 2002, Report on geochemical analysis for oils in the Dezful embayment area , S W Iran. Japan National Oil Corporation, p. 8- 17.

منابع

-Burwood, R. and M.L. Bordenove, 1990, source rock Distribution and maturation in the Zagros organic belt : province of Asmari and Bangestan reservoir oil accumulation: Bull. A. A. P. G. p. 369- 386.

-Stoneley, R. , 1990, A review of petroleum source rocks in parts of Middel East.