

-() -
// : // :

*
Archive of SID

Email: shahnooshi@yahoo.com

: *

The Class Distribution and Structure of Isfahan City and Its Effects

M. Shahnooshi, *Assistant Professor Department of Social Sciences Islamic Azad University Dehaghan*

N. Rezaee, *M.A., Student*

Abstract

For studying of the distribution of social class structure of Isfahan and its social effects, this research has been done.

The determined household sample is 432 based on the latest Isfahan census.

The tools of gathering data is a questionnaire with closed and semi closed questions.

The results indicated that the districts of Isfahan have different class structure, and the marriage relations are affected by socio- economic status of house holds.

Other hypothesis indicated there is no meaningful relation between socio-economic and geographic structure in the Isfahan districts.

Key words: Class distribution, social relation, social status, class, social structure, marriage

Archive of SID

:)

(

»

«

()

Archive of SID

Archive of SID

«

»

«

»

«

»

Archive of SID

« » « »

»

«

« »

Archive of SID

()

	()
	()
	()

Archive of SID

()

$$n = \frac{\frac{t^2 pq}{d^2}}{1 + \frac{1}{N} \left(\frac{t^2 pq}{d^2} - 1 \right)} = \frac{\frac{(1/9)^2 (0/25)}{0/0025}}{1 + \frac{1}{374252} \left(\frac{(1/9)^2 (0/25)}{0/0025} - 1 \right)} = 384$$

/ /

p,q

()

()							
			غرب	جنوب	شرق	شمال	

(Eta)

»

«

()

/						
/						
/						
/						
/						
/						
/						
/						
/						
/						
/						
/						
/						
/						

Sig= /...

$$X^2 = 85/385 \quad d.f= 3 \cdot \quad (/)$$

(/)

Eta

/

X^2

/	()	
/	()	

()

-

»

«.

()

()

()

:

)

()

(

()

()

()

()

()

()

/		/

Archive of SID

«

»

X^2
%

()

	<						
							<

r= 0/617

sig= 0/000

/

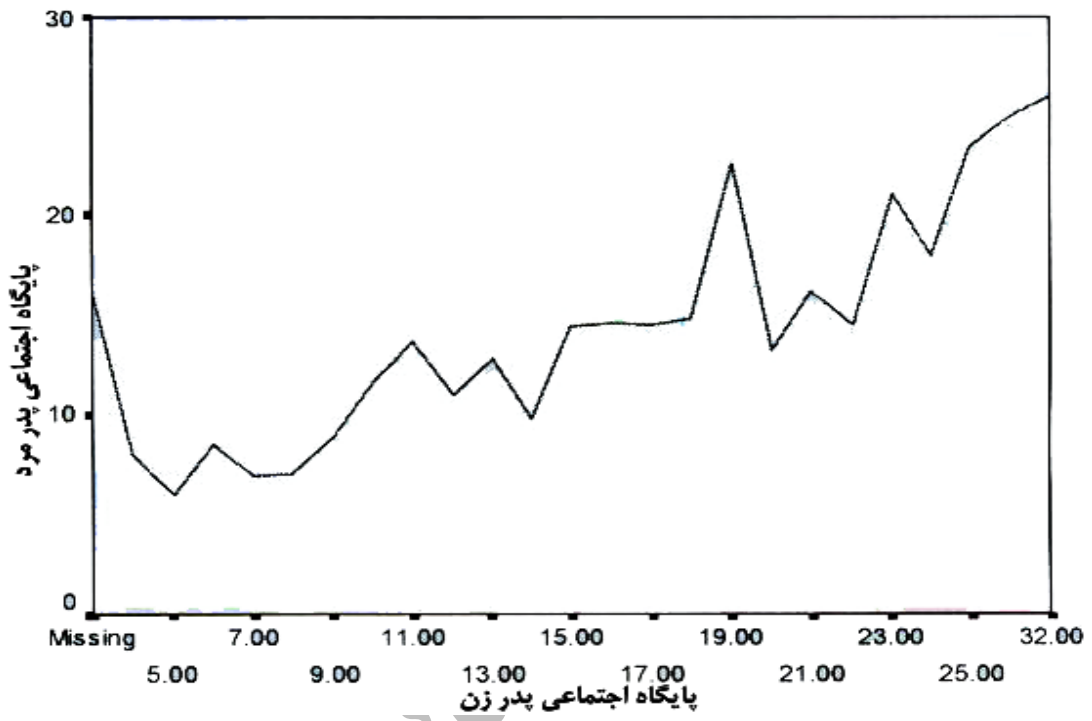
/

Sig= ./...

$X^2 = 133/781$

X^2

d.f= 25



Archiv

()

()

()

()

()

()

()

()

()

()

()

Archive of SID

()

()

()

()

() -

()

()

()

()

-

()

()

()

()

() -

()

()

()

()

()

()

()

()

()

()

Archive of SID

» ()

«

» ()

// «

()

40- Mills, c.w (1959),((the power elite)),oxford university press, New York.

()

41- W.wood Allen (1981) Rutledge and Paul kegon, ((Karl Marx)), London,

()

42- Payne Geoff (1987) social Mobility and change in modern society, London, Macmillan, first published.

(

Archive of SID