

()

تعیین اندازه بهینه مزارع سیب زمینی در استان همدان (مطالعه موردی در شهرستان بهار)

سید محسن سیدان

عضو هیئت علمی مرکز تحقیقات کشاورزی و منابع طبیعی همدان

(تاریخ دریافت: ۸۳/۱/۱۸ - تاریخ تصویب: ۸۷/۱۰/۲۵)

چکیده

(1964) Sen

(Bakhshoode &

Akbari, 1986; Torkamani & Hardaker, 1996)

Rao (1965) Mazumdar

(1966)

Rudra & (1967) Rao

(1973) Bandopadhyaya

(1981) Deolalikar

(Bakhshoode & Akbari, 1986;

.Soltani et al., 1992)

Rao & Chotigeat .

(1981)

(1993) Reddy

$$Tc = a_0 + a_1 Q + a_2 Q^2 + a_3 Q^3$$

Q TC

$$LAC = a_1 + a_2 Q + a_3 Q^2$$

Q LAC

(1992) Soltani et al .

$$\frac{\partial LAC}{\partial Q} = a_2 + 2a_3 Q = 0 \Rightarrow Q = \frac{-a_2}{2a_3}$$

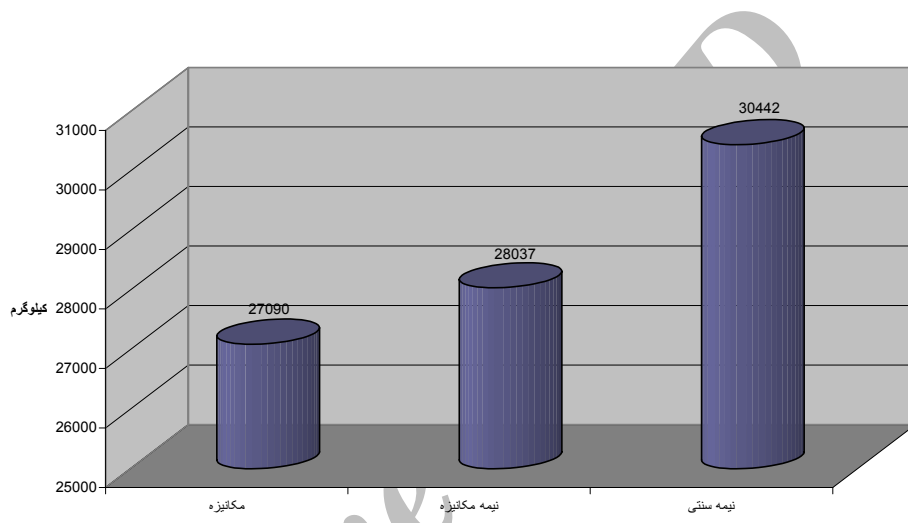
$$\frac{\partial^2 LAC}{\partial Q^2} = 2a_3 > 0$$

$$\frac{-a_2}{2a_3} \quad Q$$

(Bakhshoode & Akbari, 1986)

... :

/ (A₁)
 A₃ A₂ A₁ / /
 (A₂)
 A₂ A₁ (A₃)



| | | | |
|-----|---|---|---|
| () | / | / | / |
| () | / | | / |
| () | | | / |
| () | | | / |
| () | / | / | / |
| () | / | / | / |
| () | | | / |

| | | | |
|-----|---|---|---|
| () | / | / | / |
| () | / | | / |
| () | | | / |
| () | / | / | / |
| () | / | / | / |
| () | | | / |

| | | | |
|-----|---|---|---|
| () | / | / | / |
| () | / | | / |
| () | | | / |
| () | / | / | / |
| () | | | / |
| () | | | / |
| () | | | / |

$$LAC = \frac{dLAC}{dQ} = -\frac{1}{Q} + \frac{1}{Q^2}$$

$$C = \frac{1}{Q} - \frac{1}{Q^2} + \frac{1}{Q^3}$$

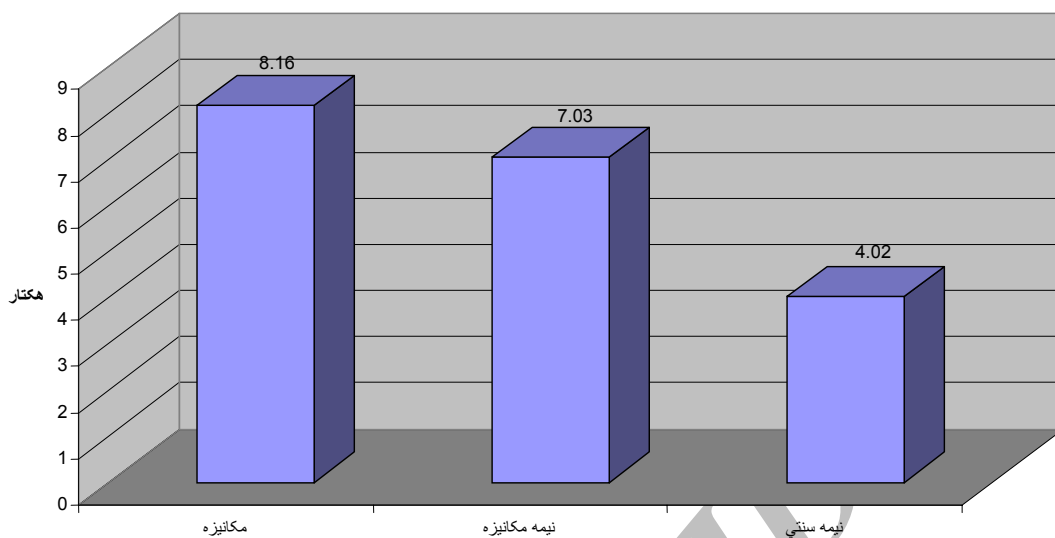
$$C = \frac{1}{Q} - \frac{1}{Q^2} + \frac{1}{Q^3}$$

$$LAC = \frac{1}{Q} - \frac{1}{Q^2} + \frac{1}{Q^3}$$

$$\frac{dLAC}{dQ} = -\frac{1}{Q} + \frac{1}{Q^2}$$

$$LAC = \frac{1}{Q} - \frac{1}{Q^2} + \frac{1}{Q^3}$$

$$C = \frac{1}{Q} - \frac{1}{Q^2} + \frac{1}{Q^3}$$



/ (A₃)

/ A₁

/ A₂

(A₁)

(A₂)

(1993) Reddy

()

REFERENCES

1. Bakhshoodeh, M. & Akbari, A. (1986). *The principles of agricultural production economy*. Shahid Bahonar, University of Kerman Publications.
2. Deolalikar, A. B. (1981). The inverse relationship between productivity and farm size: A test using regional data from India. *American Journal of Agricultural Economics*, 63, 275-278.
3. Mazumdar, D. (1965). Size of farm and productivity: A problem of Indian peasant agriculture. *American Journal of Agricultural Economics*, 32, 161-173.

4. Rao, C. H. H. (1966). Alternative explanations of the inverse relation between farm size and productivity in India. *Economic Review*, 20, 1-12.
5. Rao, A. P. (1967). Size of holding and productivity. *Economics and Politics Weekly*, 21, 724-732.
6. Rao, V. & Chotigeat, T. (1981). The inverse relationship between size of land holding and agricultural productivity. *American Journal of Agricultural Economics*, 63, 571-574.
7. Reddy, V. R. (1993). New technology in agriculture and changing size productivity relationship: A case study of Andhra Pradesh. *Indian Journal of Agricultural Economics*, 48, 360-370.
8. Rudra, A. & Bandopadhyaya, B. (1973). Marginalist explanation for more intense labour input smaller firms. *Economics and Politics Weekly*, 38, 989-994.
9. Sen, A. K. (1964). Size of holding and productivity. *Economics and Political Weekly*, 17, 323-326.
10. Sen, A. K. (1966). Peasants and dualism with or without surplus labor. *Journal of Political Economics*, 74, 425-450.
11. Soltani, Gh. R. & et al. (1992). *Farm management*. Shiraz university Press. Shiraz Iran. 2nd ed.
12. Torkamani, J. & Hardaker, J. B. (1996). A study of Iranian farmers in Ramjerd district: An application of stochastic programming. *American Journal of Agricultural Economics*, 95, 345-350.

Archive of SID