

() , ()

*

(// : // :)

IRS-1D,1C

PCI-GEOMATICA

LAI

ORBITRON

//

GPS

LAI

LAI

LAI

SAVI LAI

:

()

LAI

(Drost, et

.al., 1997)

()

$$SAVI = \frac{(B3 - B2)}{(B3 + B2)(1 + L)} \quad ()$$

L

(

(Zobeiry, & Majd, 2004)

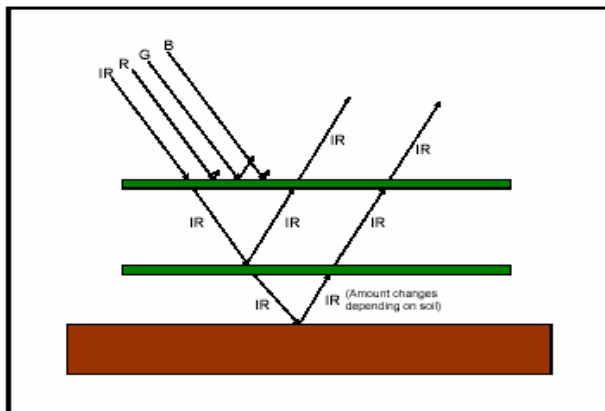
/

()

(Mobasher, 2002)

(Olofsson, & Stenstrom, 2000)

(Malmiran, 2004)



/ /)
/ /)

(Alavipanah, 2003)

() Raoofi, et al.

RS

SPOT, TM

Pan, Liss-

(Zobeiry, & Majd;

IRS- 1D- 1C III

.2004)

(Alavipanah, 2003)

GPS

() Rezvanfar & Zaereh

LAI .

LAI

() Sarmadian et al.

()

LAI

GPS RS

(Mobasher, 2002)

$$LAI = - \frac{\left(LN \left(\frac{0.65 - SAVI}{0.59} \right) \right)}{0.91} \quad ()$$

() Drost et al.

LAI

LAI

()

() Olofsson & Stenstrom

²SAVI .

Land Sat +ETM

LAI

(Mobasher, 2002)

()

SAVI

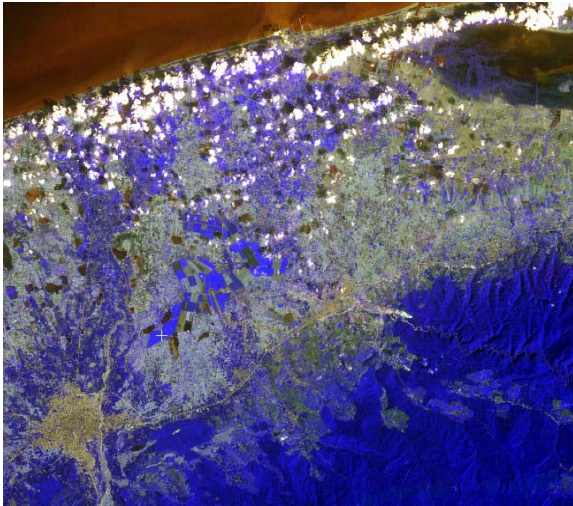
() Minghas & Ley

Liss-III, Pan
Pix Focus PCI-GEOMATLCA

IRS

NDVI

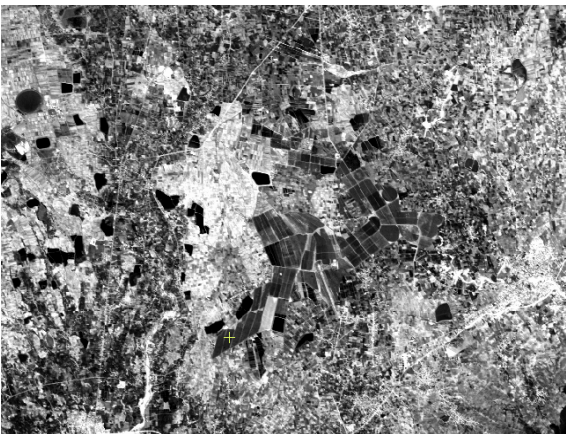
Pan Liss-III



Liss-III

LAI NDVI

LAI



Pan

ORBITRON

//

GPS

Liss-III

/

Pan

/

Gcp

Xspace

Work

/

Liss -III

Pan

PCI

Georeferenced

()

IRS

UTM

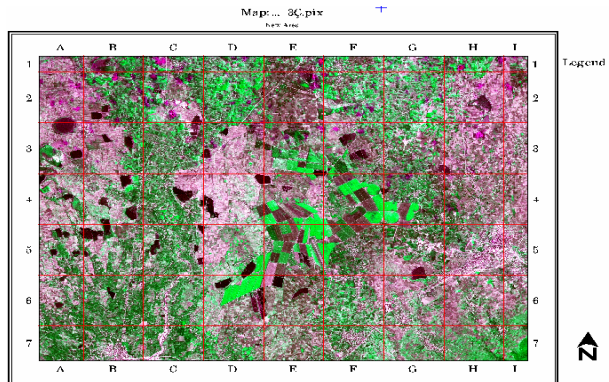
GeomaticaFocu

Green2

GeomaticaFocu

,Blue3, Red1

()



()

SAVI, LAI

()

	GBR ¹	SAVI ()	LAI ()
/	/	/	/
/	/	/	/
/	/	/	/
/	/	/	/
/	/	/	/
/	/	/	/
/	/	/	/
/	/	/	/
/	/	/	/

1. GBR (Green, Blue, Red)

()

(Zobeiry & Majd, 2004)

()

, - () -

/ / () -

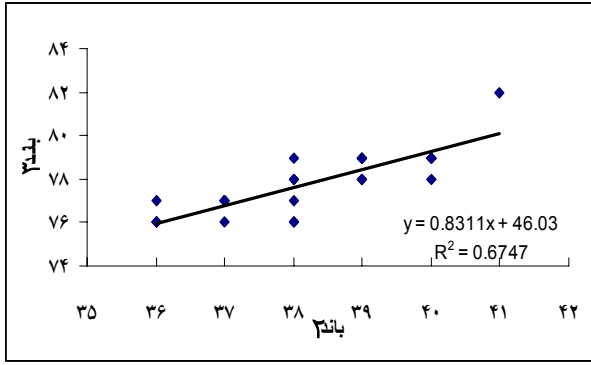
*
*
*
*
*
*

Archive of SID

LAI SAVI

()

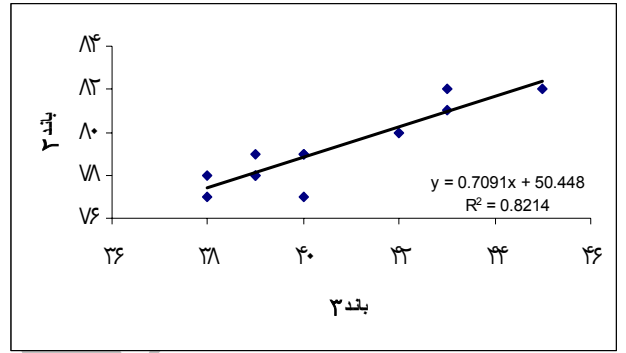
()



(Alavipanah, 2003)

()

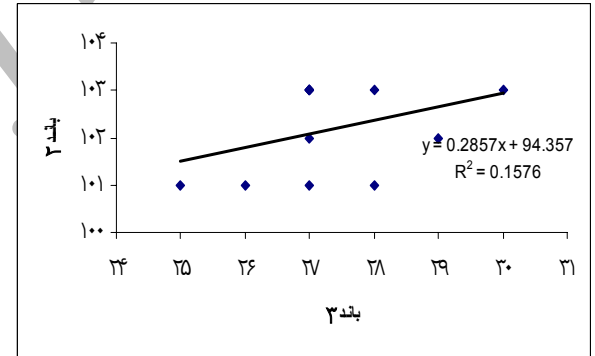
LAI



LAI SAVI

() ()

LAI



LAI

()

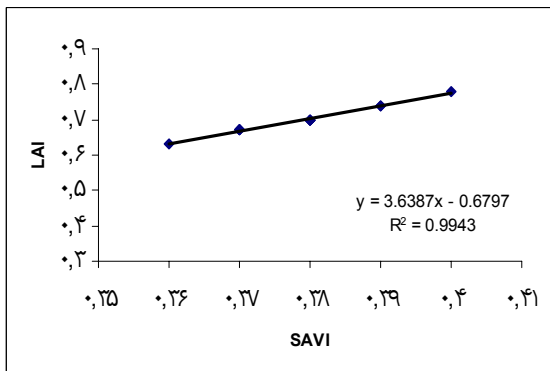
Drost et al.

()

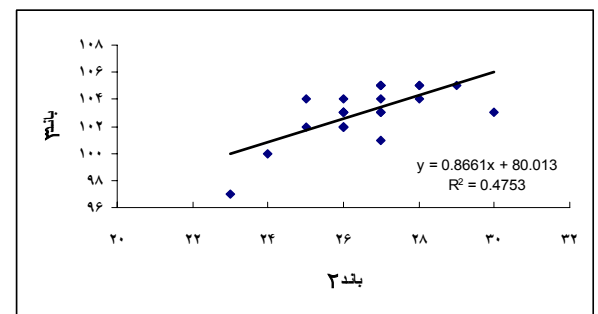
LAI

() ()

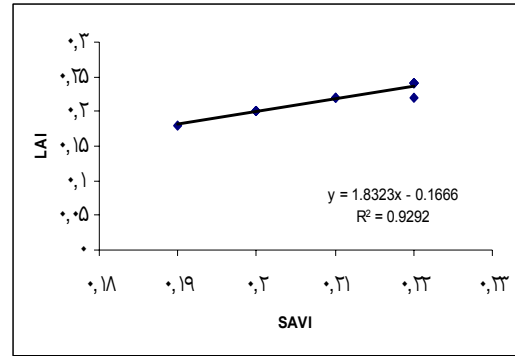
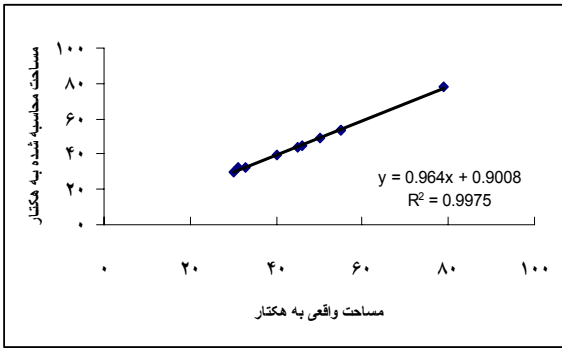
()



LAI SAVI



()



LAI SAVI

LAI

LAI

()

(LAI= ,)

(LAI= ,)

LAI

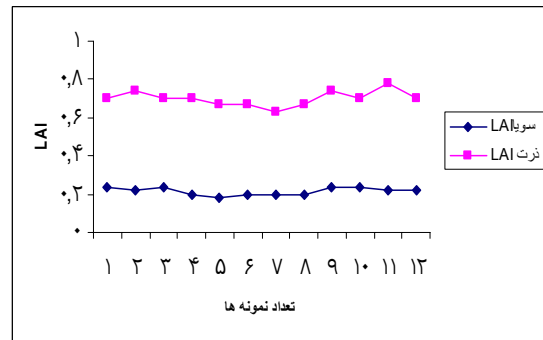
/

SAVI

LAI

()

/



LAI

REFERENCES

Alavipanah, S.K. (2003). *Application of Remote Sensing in the Earth Sciences (soil)*. Tehran Univ. Press,

478p.

Drost, D., P. Hendley, & S. Ustin. (1997). *Corn and*

- Soybean yield indicators using remotely sensed vegetation Index*. University of California. 7pp.
- Farhatjah, B. (2002). *remote sensing and geographical information systems*. National Geographical organization Publication. First Edition. 280pp. (Translated in Persian).
- Fatemi, S.B. & Y. Rezaei. (2005). *Principles of Remote Sensing*. Azadh Publication. First Edition. 266pp. (Translated in Persian).
- Malmiran, H. (2004). *The Matic Mapping from Satellite Imagery a Guide Book*. National Geographical organization Publication. First Edition. 256pp. (Translated in Persian).
- Mobasher, M. (2002). *Remote sensing of application*. Khaje Nasir University. 128p. (Translated in Persian).
- Minghas, Z. H. & P. Ley. (1997). *Corn and Soybean yield indicators using remotely sensed vegetation indict*. University of California, Davis, 95, 16
- Olofsson, L. & R. Stenstrom. (2000). *Estimation of leaf area index in Southern Sweden with optical modeling and a land sat 7 ETM + scene*. Department of Physical Geography, Lund University, Sweden.
- Rezvanfar, A. & H. Zaereh. (2005). Role of different communication channels and information sources in different stages of innovation-decision process over the adoption of GPS Technology: An effectiveness model. *Iranian Journal of Agricultural Sciences*. 37-2(1), p.49.
- Raofi, M. H., GH. Refahi, N. Jalali, & F. Sarmadian. (2003). A Study of the efficiency of digital processing methods of satellite images to map and locate soil erosion. *Iranian Journal of Agricultural Sciences*. 35(4), P 807.
- Sarmadian, F., K. Moravvej, SH. Mahmoodi., & S. M. R. Ebrahimi-Khomami. (2003). An investigation of land suitability evaluation for irrigated crop, using remote sensing and geographical information system techniques in parts of Varamin plain. *Iranian Journal of Agricultural Sciences*. 34 (4), p 898.
- Zobeiry, M. & A. R. Majd. (2004). *An introduction to remote sensing technology and its application in natural resources*. Tehran Univ. Press, 317pp.

Archive of SID