

() , ()

-

(// : // :)

()

+ ()
 T3 T1: ()
 T5 + T4 T2 +()

:

T2 %

) T2
) T1 () T5 () T4 () T3 (

()

:

.(Diekmn *et al.*, 1994)

.(Eskandari, 1997)

()

)

.(Arshad *et al.*, 1999)

(

()

()

.1968)

(Unger, 1978)

(Lopez *et al.*, 1996)

)

)

()

(

(

/

/

)

(

(Dalal *et al.*, 1998)

(Anon., 1992)

%

(Mejahed & Sander, 1998)

(Bregle, 1982)

(1999) Halvorson *et al.*

(Izaurrealde *et al.*, 1995)

)

(

)

(

(

)

)

(

)

)

(

(

(Anon., 1990)

...

(T3) (2004) Hemmat & Eskandari

(T4)

(T2) (T1) (T4) (T3)

(1999) Rahimzadeh *et al.*

()

() () (2006) Hemmat & Eskandari

()

() () () ()

() () () ()

() () () ()

() (1993) Pikul *et al.*

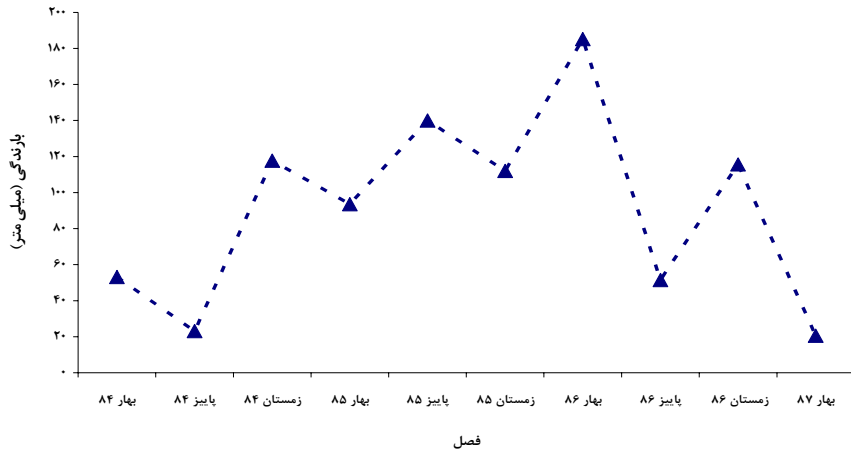
()

() (T1)

() (T2)

| | | | | |
|-----|---|---|-------|---------|
| () | | | | |
| / | / | / | / | % / %) |
| | | | (% / | () |

()



+

T1:
T2

(power harrow)

T3

×

)

/

(

T4

+

T5

(

(...

)

×

)

(

()

()

()

| Clay | Silt | Sand | ppm | ppm | EC*10 ³ dS/cm | s.p |
|------|------|------|-----|-----|-----------------------------|-----|
| / | / | SCL | / | / | / | / |

)

:

| | | | |
|-------|-------|-----|----|
| () | () | () | |
| (%) | (%) | () | |
| | | | // |
| | | | // |
| | | | // |

| |
|-----|
| () |
|-----|

| | | |
|-----|----------|-----|
| () | HRB 252D | () |
| () | | () |

/) (/

$$BD = W_s / V$$

(g/cm³) = BD
 (g) = W_s
 (cm³) = V

()

+) T4

(

T3 T2

()

+

+

()

| | | |
|-----|-----|-----|
| () | () | () |
|-----|-----|-----|

| | | | | | |
|------|------|------|------|------|------|
| / ns | / ns | / ns | / ns | / ns | / ns |
| / ** | / ** | / ** | / ns | / * | / * |
| / | / | / | / | / | / |

.% %

*** * ns

%

()

T2

()

T5

(

/)

(

/)

+

| | |
|------|--|
| / ** | |
| / ** | |
| / ns | |
| / | |

.% %

*** * ns

/ : (%CV)

()

(g/cm3)

| | |
|-----|--|
| / * | |
| / * | |
| / | |

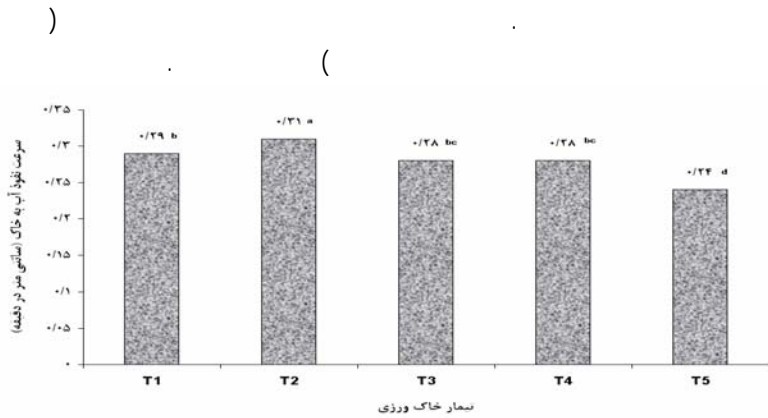
.% %

*** * ns

| | | |
|-----|-----|----|
| / b | / b | T1 |
| / a | / a | T2 |
| / a | / a | T3 |
| / b | / b | T4 |
| / b | / b | T5 |

%

()



()

(+)

(kg/ha)

| | | | | | | | |
|------|-------|------|------|----|------|----|-----|
| ** | ** ** | ns | / ** | ** | ** | ** | |
| / | / | / | / | | | | |
| / ns | / ns | / ns | / ns | ns | ns | ns | |
| / ns | / ns | / ns | / * | ns | ns | ns | * |
| / | / | | / | | | | |
| | / | | / | | / | / | CV% |
| | | .% % | | | ** * | ns | |

() T5 () T4 ()
 () T3
 () (T1)) T2
 (Anon.,) T4 () T3 ()
 1990; Hemmat & Eskandari, 2004; Halvorson *et al.*,1999; Lopez *et al.*, 1996) T5 ()
 () T1
 / / /
 () T2
 ()

| (cm) | (cm) | (kg/ha) | (+) (kg/ha) | | | |
|------|------|---------|---------------|---|---|------|
| / | / | | | / | / | / T1 |
| / | / | | | / | / | / T2 |
| / | / | | | | / | / T3 |
| / | / | | | | / | / T4 |
| / | / | | | / | / | / T5 |

() ()

)

(

()

(+)

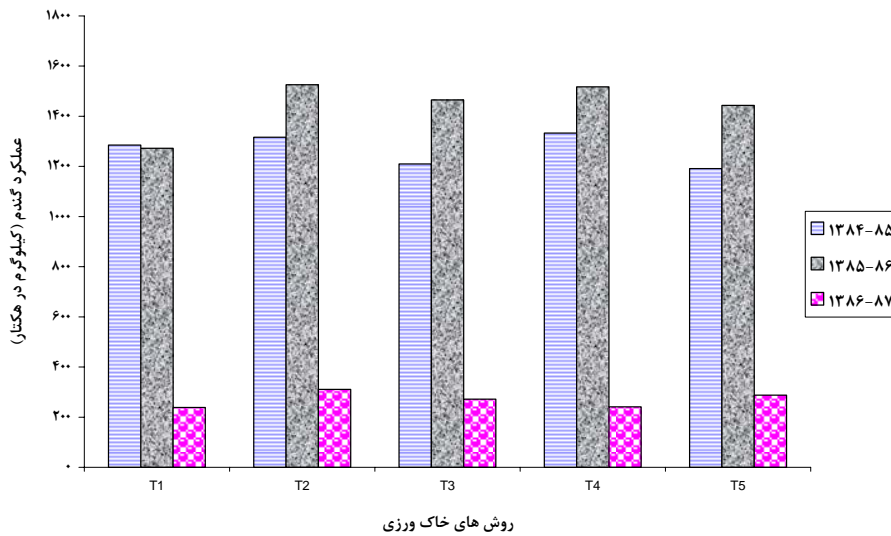
(+)

(+)

| | | | | | |
|------|------|------|------|------|----|
| ns | ns | / ns | / ns | / * | ** |
| / ns | / ns | / ns | / ns | / ns | ns |
| | | / | / | / | / |

% %

** * ns



REFERENCES

Anonymous. (1990). *Farm resource management program*. Annual report for 1990. ICARDA. Aleppo. Syria.
 Anonymous. (1992). *Farm resource management*

program. Annual report for 1992. ICARDA. Aleppo. Syria.
 Arshad, M.A., Franzluebbbers, A. J., & Gill, K.S. (1999). Improving barley yield on an acidic

- Boralf with crop rotation, and zero tillage. *Soil & Tillage Research*, 50, 47-53.
- Brengle, K.C. (1982). *Principles and practices of dryland farming*. Colorado Associated University Press. Boulder. Colorado 309.
- Dalal, R. C., Strong, W. M., Weston & E.J., Cooper . (1998). Sustaining productivity of a Vertisol at Warra, Queensland, with fertilizers, no-tillage, or legumes. Wheat yields, nitrogen benefits and water-use efficiency of chickpea-wheat rotation. *Australian Journal of Experimental Agriculture*. 38(5)489-501, 33.
- Diekmann, J., Bansal, R. K. & Moonroe, G.E. (1994). *Developing and delivering mechanization for cool season food legume*. Kulwer Academic Publisher. Netherlands.
- Eskandari, I. (1997). *Determination of tractor drawbar power in different depths in dryland conditions*. Research Report. Dryland Agricultural Research Institute. (in Farsi)
- Halvorson, A. D., Blak, A. L., Krupinsky, J. M, & Merrill, S. D. (1999). Dryland winter wheat response to tillage and nitrogen within an annual cropping system. *Agronomy Journal*, 91, 702-707.
- Hemmat, A. & Eskandari, I. (2004). Tillage system effects upon productivity winter wheat-chickpea rotation in the northwest region of Iran. *Soil & Tillage Research*, 78(11), 69-81.
- Hemmat, A. & Eskandari, I. (2006). Dryland winter wheat response to conservation tillage in a continuous cropping system in northwestern Iran. *Soil & Tillage Research*, 86, 99-109.
- Hillel, D. (1982). *Introduction to soil physics*. Academic Press, New York.
- Izaurrealde, R.C., Choudhary, M., Juma, G.N. McGill, W. B. & Haherlein, L. (1995). Crop and nitrogen yield in legume-based rotations practiced with zero tillage and low input methods. *Agronomy Journal*, 87 (5), 968-964.
- Lopez-Bellido, L., M, Fuentes., Castillo, J.E. & E.J.Fernandez. (1996). Long-term tillage, crop rotation, and nitrogen fertilizer effects on wheat yield under rained Mediterranean condition. *Agronomy Journal*, 88 (5), 783-791.
- Mejahed, E.I & Sander, K. D. H. (1998). Rotation, tillage and fertilizer effects on wheat-based rainfed crop rotation in semiarid Morocco. Proceeding of 3rd European Conference on Grain Legumes. Opportunities for high quality, healthy and added-value crops to meet European demands. Valladolid, Spain, 442-454.
- Pikul, Jr., J. L., Ramig, R. E., & Wilkins, D. E. (1993). Soil properties and crop yield among four tillage systems in a wheat- pea rotation. *Soil & Tillage Research*, 26, 151-162.
- Rhimzadeh, R., Heidari, A., Loveimi. N., & Naraki. F. (2009). *Study on the effects of different tillage method on physical properties of soil and wheat yield in legume- wheat rotation in dryland area*. Research Report. Dryland Agricultural Research Institute. (in Farsi)
- Triplett, Jr.G.B., Vandoren Jr D.M. & Schmidt, B.L. (1968). Effect of corn straw mulch on no tillage corn yield and water infiltration. *Agronomy Journal*, 60, 236-239.
- Unger, P. W. 1978. Straw mulch rate effect on soil water storage and sorghum yield. *Soil Science Society of American Journal*, 42, 486 - 491.
- Unger, P.W., & Mccalla, T.M. (1980). Conservation tillage systems. *Advances in Agronomy*, 33, 1-58.