

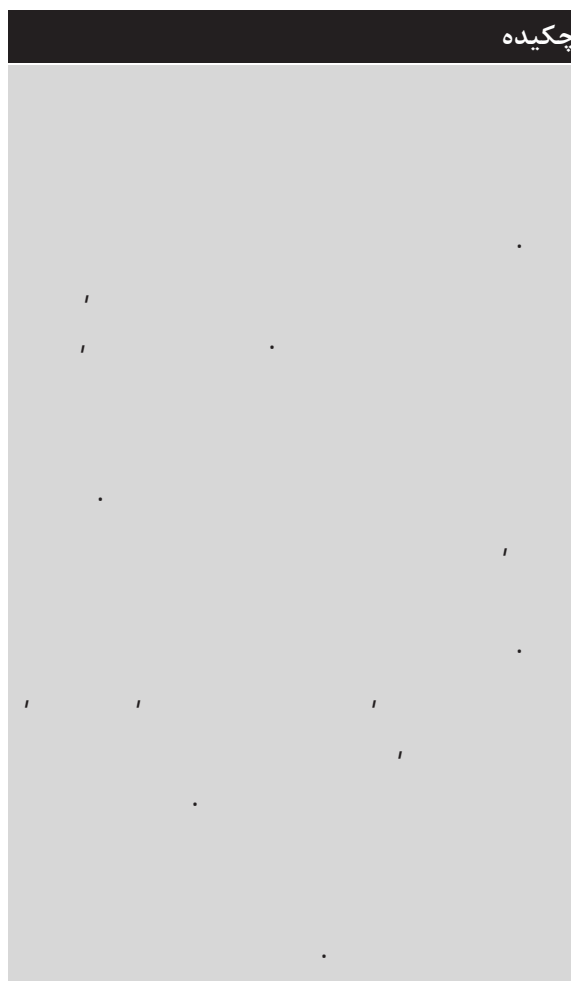


پژوهش نفت

سال بیستم
شماره ۶۱
صفحه ۴۸-۵۷، ۱۳۸۹

Ali.a.kak@gmail.com

چکیده



1. Cutting
2. Well Logs

« ».[]

« »

.()

:

.()

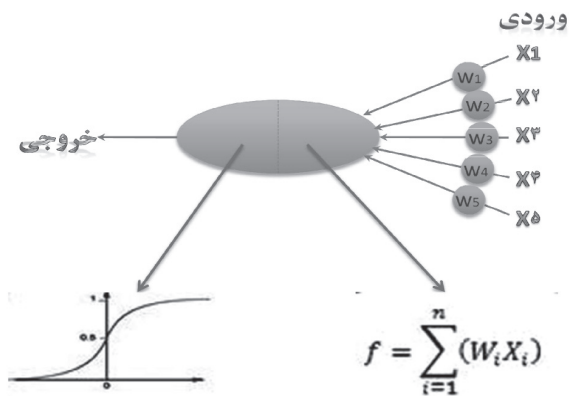
[]

[]

« »

« »

[-]



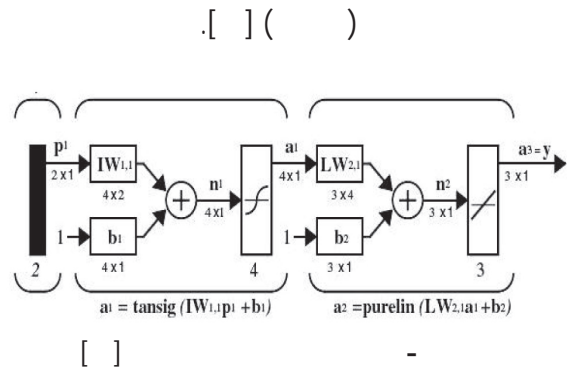
()

[]

[]

.()

1. Back-Propagation Neural Networks(BPNN)
2. Pattern Recognition
- 3 -Training
- 4 -Generalization
- 5 -Verification



- | | |
|-----------------------------------|-----------------------------|
| 1. Target Vectors | 6. Short Laterolog(LLS) |
| 2. Error Correcting Learning Rule | 7. Photoelectric Effect(PE) |
| 3. Gamma Ray(GR) | 8. Formation Density |
| 4. Neutron Porosity(NPHI) | 9. Delta-T(DT) |
| 5. Deep Laterolog(LLD) | |

(MATLAB.)

()

[] ()

(-)

)

(

()

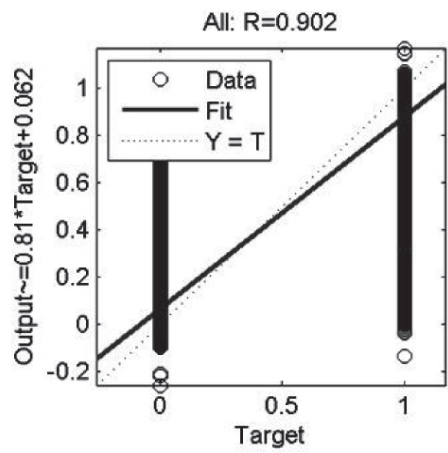
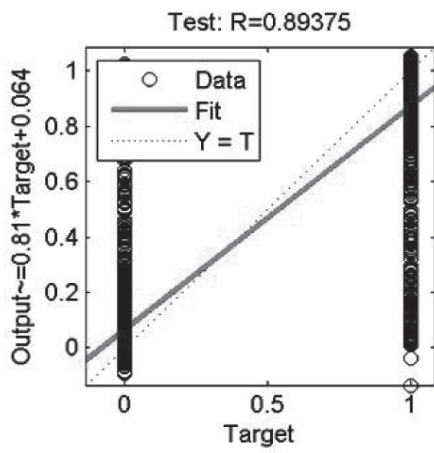
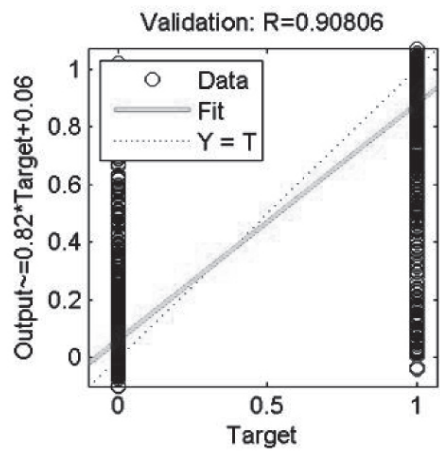
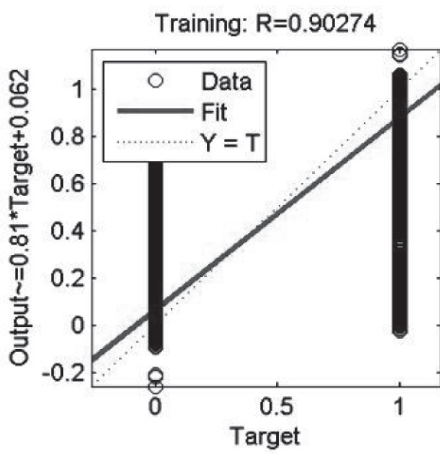
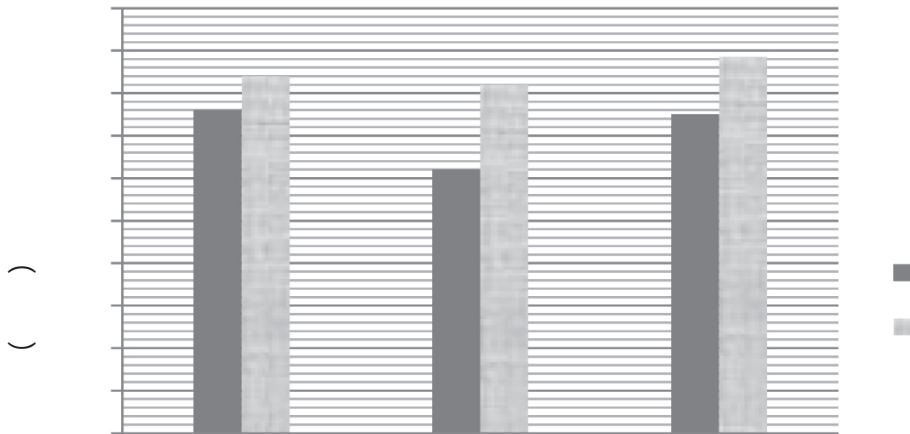
()

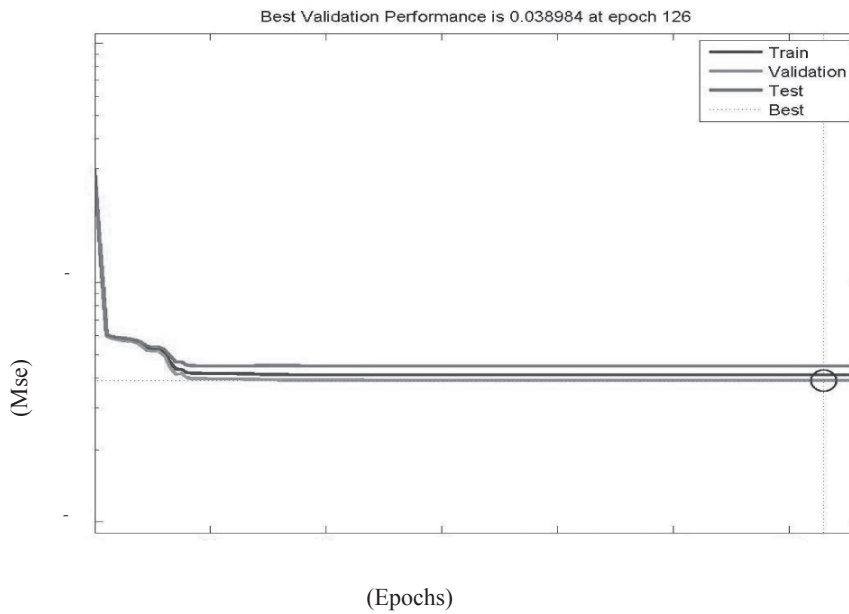
	Msereg				
	Msereg				()
	Mse				
	Mse				()
	Mse				
	Mse				()
	Msereg				
	Mse				()
/	Msereg				
	Mse				()
/	Mse				
/	Mse				()

[] ()

()

()





:GR

:NPHI

:LLD

:LLS

:PEF

()

:RHOZ

:DT

- [1] Satter A. & Thakur G.C., *Integrated petroleum reservoir management*, PennWell Publishing Company, 1994.
- [2] Bhatt A., *Reservoir properties from well logs using neural networks*, Norwegian University of Science and Technology, chap. 6, 2002.
- [3] White A.C., Molnar D., Aminian K., Mohaghegh S., Ameri S. & Esposito P., "The application of ANN for zone identification in a complex reservoir", SPE Paper 30977, SPE Eastern Regional Conference & Exhibition, Morgantown, West Virginia, USA, 1995.
- [4] Farmer R.G. & Adams S.J., "Facies recognition using neural networks", New Zealand Petroleum Conference Proceeding, 1998.
- [5] Schoenicke O., Alawi S.M., Bemani A.S., Kalam M.Z. & Varlet X.L., "Preliminary studies on using artificial neural networks to predict sedimentary facies of the Permo-Carboniferous Glacigenic Al Khlata formation", Oman, SPE Paper 53260, SPE Middle East Oil Show, Bahrain, 1999.
- [6] Bhatt A. & Helle H.B., "Determination of facies from well logs using modular neural networks", Petroleum Geosciences, Vol. 8, pp. 217-228, 2002.
- [7] Lianshuang Q. & Timothy R.C., "Neural network prediction of carbonate lithofacies from well logs, Big Bow and Sand Arroyo Creek fields, Southwest Kansas", Computer & Geosciences, Vol. 32, pp. 947-964, 2005.
- [8] Dubois M.K., Bohling G.C. & Chakrabarti S., "Comparison of four approaches to a rock facies classification problem", Computer & Geosciences, Vol. 33, pp. 599-617, 2006.
- [9] Maiti S., Tiwari R.K. & Kumpel H., "Neural network modeling and classification of lithofacies using well log data: a case study KTB borehole site", Geophysics J. Int., Vol. 169, pp. 733-746, 2007.
- [10] () []
- [11] White A.C., Molnar D., Aminian K., Mohaghegh S., Ameri S. & Esposito P., "The application of ANN for zone identification in a complex reservoir", SPE Paper 30977, SPE Eastern Regional Conference & Exhibition, Morgantown, West Virginia, USA, 1995.
- [12] Demuth H., Beal M. & Hagan M., *Neural network toolbox 6 (Users Guide)*, The MathWorksTM, 1992-2009.
- [13] Malki H.A. & Anwar M.S., "Determination of lithofacies from well logs using unsupervised neural network model", The Technology Interface, The Electronic Journal for Engineering Technology, Vol. 5, No. 1, pp. 947-964, 2003.
- []