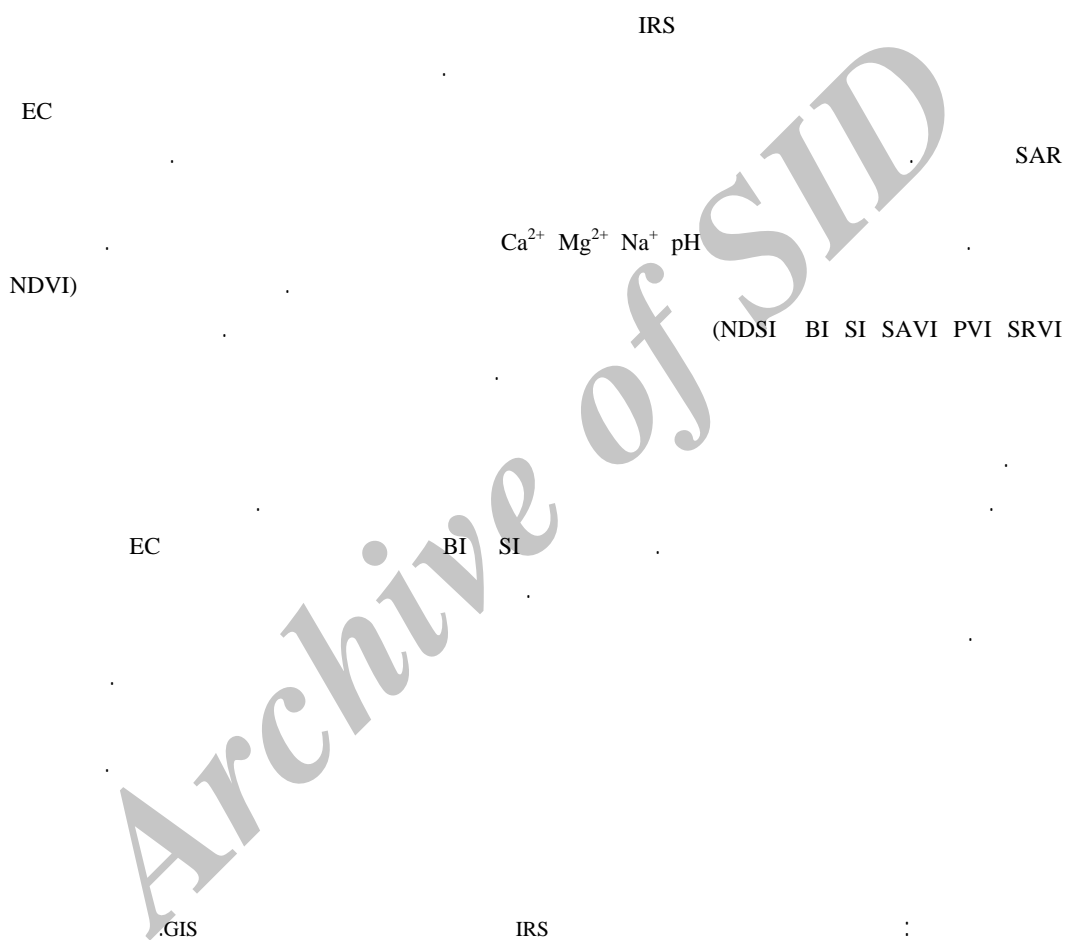


LISS_III

*



(Mougenot et al., 1993)

, ()

/ /

()

()

(Farifteh et al., 2005)

(NaCl)

() Metternicht .

()

/

NDVI

(Hunt and Salisbury,

.1972)

() Moreau

(Wang et al., 2002)

)

() Wang et al. (AL-khaier, 2005)

() Ghassemi et al. .

NIR

(Seal)

VIS

SRVI

() Metternicht

() Masoud and kike

(nm)

PCA1 OIF

PCA1

IRS () Khan et al.

LISS-II

()

SI

(BI)

NDSI

)
(

Weak Aridic

(Thermic)

NDVI NDSI

LISS_III

() Dwivedi et al.

PCA

PC2 PC1 .

PC4

PC3

PC1

PC3

PC4

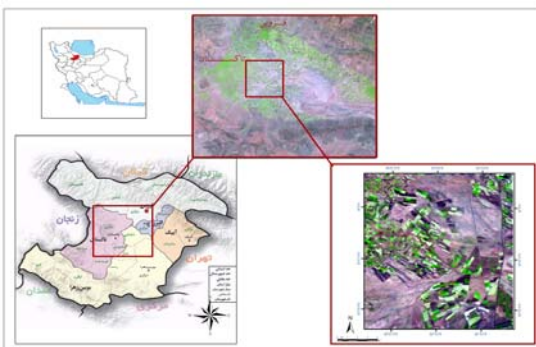
Khan et al.,)
)

(2001

(:

Metternicht .

() and Zinck



%

GIS

(Stratified random sampling)

(DEM)

DEM () Liu et al. .

()

B3 B2

(

LISS_III

x

/ x /

F3 F10 F9 ()

S2 S1

(S3 S4,S5)

F8 F6 F5 F4

F1

Ca²⁺ Mg²⁺ Na⁺ pH

F12 F11 F2

dS/m >

>

SAR

()

()

(Mask)

(Fatahi, 2006)

()

()

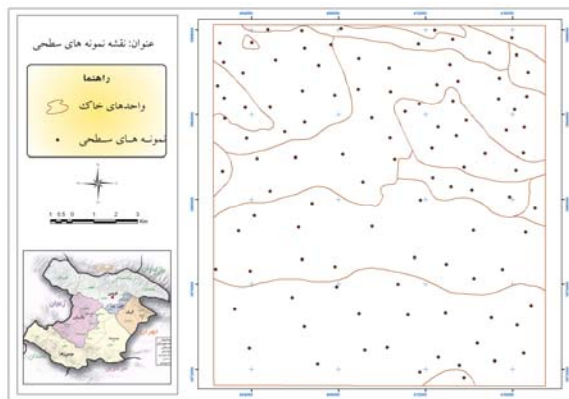
()

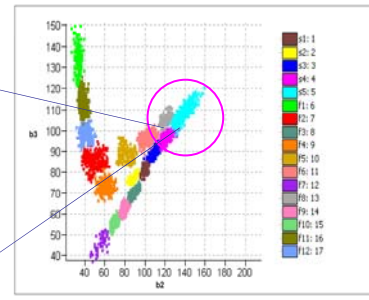
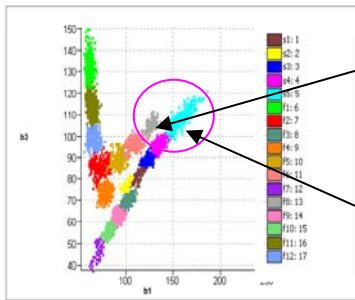
)

(

F7

Archive of SID

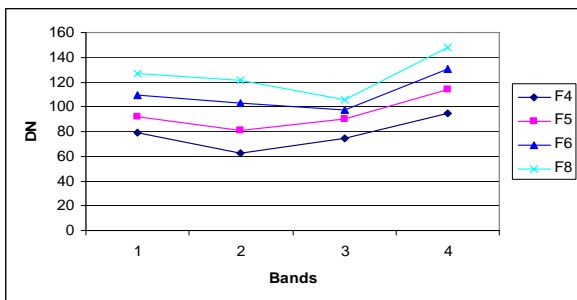




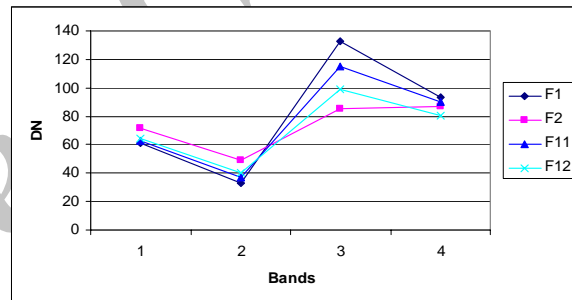
ج
B3 B1
(S2 S1)

الف
B3 B2
()

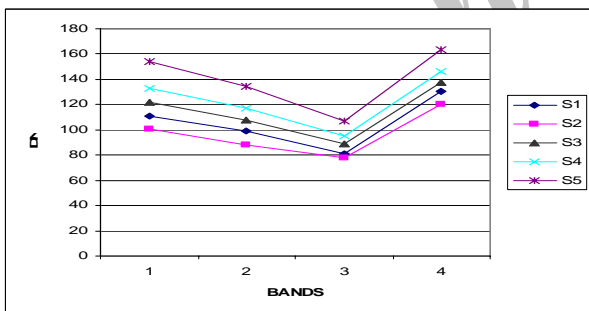
(S5 S4 S3)



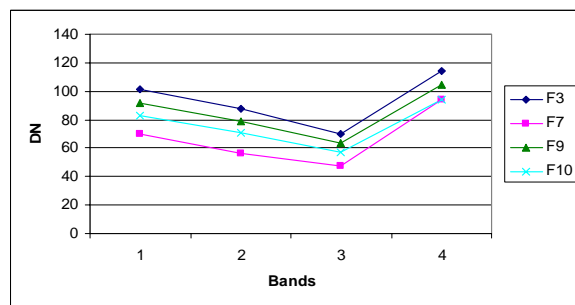
(ب)



(الف)



()



()

()

()

()

()

(Optimum Index Factor)

DEM

DEM

(Liu et al., 2005)

()

Minimum distance to)

Parallelepiped or Box)

(Maximum likelihood)

(mean

(classifier

SI SAVI PVI SRVI NDVI

()

BI NDSI

Eliminate (Majority)

Box Classifier

()

DEM

(NDSI BI SI SAVI PVI SRVI NDVI)

EC_e

SI ₁	$\sqrt{G \times R}$.695**
SI ₂	$\sqrt{G^2 + R^2 + NIR^2}$.694**
SI ₃	$\sqrt{G^2 + R^2}$.690**
BI	$\sqrt{R^2 + NIR^2}$.614**
NDVI	$\frac{NIR - R}{NIR + R}$	-.357**
SAVI	$\frac{NIR - R}{NIR + R + L} (L+1)$ (a=0.9,	-.310**
PVI	$\frac{NIR - aR - b}{\sqrt{1+a^2}}$ b=0.1)	-.287**
NDSI	$\frac{R - NIR}{R + NIR}$.222*
SRVI	$\frac{NIR}{R}$	-.358**

()

soil4

S5 ()

(%) S4 ()

%

f3 S4

/ / S2 S1 S0

% ()

f3 ()

() (Cross)

LISS

(Box Classifier)

Undefined % /

DEM

(Kappa coefficient)

(Overall accuracy)

Producer) / (User accuracy)

/ (accuracy)

DEM ()

(PCA)

. EC

LISS

	EC	s0%	s1%	s2%	s3%	s4%	s5%	EC
soil1	s3							s3
soil2	s4				/	/		s3
	s3							
soil3	s4				/	/		s4
	s3							
soil4	s5					/	/	s4
	s4							
soil5	s5							s5
f1	s0							s0
f2	s1							s0
	s0							
f3	s2		/	/				s2,s1
	s1							
	s0							
f4	s2		/	/				s2
	s1							
f5	s0	/	/	/				s0,s1
	s1							
	s2							
f6	s2	/	/	/				s1,s0
	s1							
	s0							
f7	s0							s0
f8	s2							s1
	s1							
f9	s1	/	/					s0
	s0							
f10	s0	/	/					s0,s1
	s1							
f11	s0							s0
f12	s1							s0
	s0							

EC

(PCA)

EC			
/	/	/	/
/	/	/	/
/	/	/	/
/	/	/	/
/	/	/	/
/	/	/	/
/	/	/	/
/	/	/	/

S1

()

S5

S0

S2 S0

()

S5

S5

LISS

() McGowen and Mallyon

S5

S4

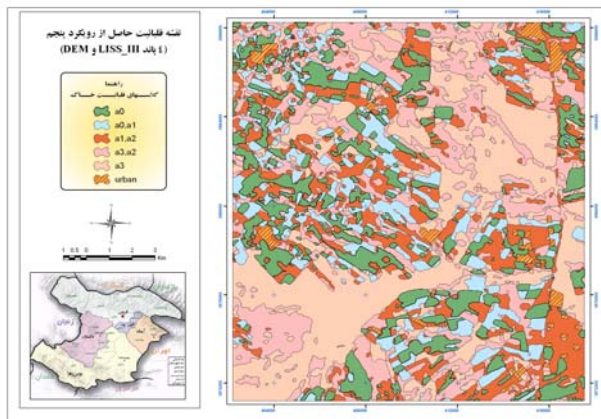
(%)

S3 S4

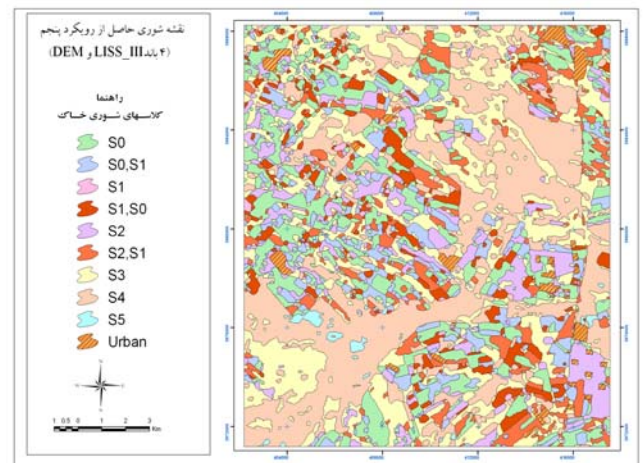
S1

LISS_III

	s0	s1	s2	s3	s4	s5		
s0							/	/
s1							/	/
s2							/	/
s3							/	/
s4							/	/
s5							/	/
	/	/	/	/	/	/		
	/	/	/	/	/	/		



LISS



LISS_III

/ / /

a2 /

a1 a3

a2

a3

()

...

LISS . a1

a0 . S3 S4 S5

. SAR LISS

	EC	a0%	a1%	a2%	a3%	SAR
s1	a3 18 a2 18					a2,a3
s2	a3 a2			/	/	a3,a2
s3	a2 a3			/	/	a3
s4	a3					a3
s5	a3					a3
f1	a0					a0
f2	a0					a0
f3	a1 a0 a2	/	/	/		a1,a2
f4	a0 a1 a2	/	/			a1,a2
f5	a2 a1 a0	/	/	/		a0,a1
f6	a0 a1	/	/			a0,a1
f7	a0					a0
f8	a1 a0					a0,a1
f9	a0 a1	/	/			a0
f10	a1 a0	/	/			a0
f11	a0					a0
f12	a0					a0

Archive of SID

	a0	a1	a2	a3
a0				/ /
a1				/ /
a2				/ /
a3				/ /
	/	/	/	/
	/	/	/	/

() Farifteh et al.

DEM

)

S5 ()
()

S1

(Alavipanah and Pouafar, 1998)

Masoud and kike

- () Matinfar () Liu et al. ()

Dwivedi et al. () Masoud and kike

BI SI ()

EC

SRVI PVI NDVI SAVI

EC

Rao et al., ; Moreau, 1996)

(1995

EC

BI SI NDSI

()

.(Metternicht and Zinck, 1997)

BI: Brightness Index

DEM: Digital Elevation Model

EC: Electrical Conductivity

GIS: Geographic Information System

NDSI: Normalized Differential Salinity Index

NDVI: Normalize Differential Vegetation Index

OIF: Optimum Index Factor

PCA: Principal Component Analysis

PVI: Perpendicular Vegetation Index

SAR: Sodium Absorption Ratio

SAVI: Soil Adjusted Vegetation Index

SI: Salinity Index

SRVI: Simple Ratio Vegetation Index

() Matinfar () Masoud and kike

()

REFERENCES

- Alavipanah, S.K. and Pouafar, A. (1998). Potentials and constraints of soil salinity studies in two different conditions of Iran using Landsat TM data. In: *International Congress Washington, D.C. USA*.
- AL-khaier, F. (2003). Soil Salinity Detection Using Satellite Remote Sensing. MS dissertation, ITC.
- Dwivedi, R. S. and Sreenivas, K. (1998). Image transforms as a tool for the study of soil salinity and alkalinity dynamics. *International Journal of Remote Sensing*, 19, 605–619.
- Dwivedi, R. S. (1996). Monitoring of salt-affected soils of the Indo-Gangetic alluvial plains using principal component analysis. *International Journal of*

Remote Sensing, 17, 1907– 1914.

- Farifteh, J., Farshad, A. and George, R.J. (2005). Assessing salt-affected soils using remote sensing, solute modeling and geophysics. *Geoderma*, 130, 191-206.
- Fatahi, M. (2006). Comparison of four methods for mapping landuse/landcover of Qom area, Agricultural research center of Iran. (In Farsi)
- Ghassemi, F., Jakeman, A. J., and Nix, H. A. (1995). *Salinisation of land and water resources: human causes, extent, management and case studies Canberra*. PhD dissertation, The Australian National University.

- Hunt, G., Salisbury, J., and Lenhoff, C. (1972). Visible and near infrared spectra of minerals and rocks: V. Halides, phosphates, arsenates, vanadates and borates. *Journal of Modern Geology*, 3, 121– 132.
- Khan, M. N., Rastoskuev, V.V., Shalina, E.V. and Sato, Y. (2001). Mapping salt affected soils using remote sensing Indicators- a simple approach with the use of GIS IDRISI. In: Proceedings of *The twenty second Asian Conference on remote sensing*.
- Liu, X., Peterson, J., Zhang, Z. and Chandra S. (2005). Improving soil salinity prediction with high resolution DEM derived from LIDAR data. In: Proceedings of *The ninth International symposium on physical measurements and Signature in Remote sensing*, China.
- Margate, D. E., and Shrestha, D.P. (2001). The use of hyperspectral data in identifying “desert-like” soil surface features in Tabernas area, southeast Spain. *The twenty second Asian conference on remote sensing*.
- Masoud, A.A., and kike, K. (2006). Arid land salinization detected by remotely-sensed landcover changes, A case study in the Siwa region, NW Egypt. *Journal of Arid Environments*, 66, 151-167.
- Matinfar, H. R. (2006). Evaluation of ASTER, LISS_III, ETM, TM, and MSS data for characterizing and mapping soil base upon filed observation and Geographic information system(GIS). PhD dissertation, university of Tehran. (In Farsi)
- McGowen, I., and Mallyon, S. (1996). Detection of Dryland salinity using single and multi-temporal Landsat imagery. In: Proceedings of *the 8th Australasian Remote Sensing Conference*, Canberra (pp. 26–34).
- Moreau, S. S. (1996). Application of remote sensing and GIS to the mapping of saline\sodic soils and evaluation of sodification risks in the Province of Villarroel, Central Altiplano, Bolivia. In: Proceedings of *the 4th International Symposium on High Mountain Remote Sensing Cartography*.
- Metternicht, G. (1999). Current status and future prospectives of radar remote sensing for cartographic applications. *Journal of Cartography*, 28, 1– 16.
- Metternicht, G. and Zinck, J. A. (1997). Spatial discrimination of salt and sodium affected soil surfaces. *International Journal of remote sensing*, 18, 2571-2586.
- Metternicht, G. I. and Zinck, J. A. (1996). Modelling salinity – alkalinity classes for mapping salt-affected topsoils in the semi-arid valleys of Cochabamba (Bolivia). *ITC Journal*, 2, 125– 135.
- Mougenot, B., Pouget, M., and Epema, G. (1993). Remote sensing of salt affected soils. *Remote Sensing Reviews*, 7, 241–259.
- Rao, B., Sankar, T., Dwivedi, R., Thammappa, S., Venkataratnam, L., Sharma, R., and Das, S. (1995). Spectral behaviour of salt-affected soils. *International Journal of Remote Sensing*, 16, 2125– 2136.
- Wang, D., Wilson, C. and Shannon, C. (2002). Interpretation of salinity and irrigation effects on soybean canopy reflectance in visible and near-infrared spectrum domain. *International Journal of remote sensing*, 23(5), 485-492.