

() , ()

:)

(

*

(Geometric standard deviation of soil particles : σ_g)

Geometric)

LISS-III

IRS-P₆

)

σ_g

(

(mean particle diameter or GMPD : d_g)

σ_g

(

) $\sigma_g \geq$

$\sigma_g < d_g$

(

) $\sigma_g <$

:

σ_g

(σ_g)

Bahrami et al., 2005; Ghorbani)

(d_g)

(and Bahrami, 2005

()

Bybordi,)

(Means and Parcher, 1964)

(2001

(σ_g)

(Shirazi and Boersma, 1984)

(Malakouti, 2006)

(Folk, 1966)

Alavipanah, 2004; Nanni and Dematte,

(2006)

bahramih@modares.ac.ir :

*

www.SID.ir

(Demattê et al., 2004)

/ / :

(Galvão et al., 1997; Stoner and Baumgardner, 1981)

(Coefficient of determination(R²))

(Okin and Painter, 2003) /

(Visible)

/ - / (Near Infrared)

/ - / (Shortwave Infrared)

- (Thermal Infrared)

:

-) (Ultra Violet)

() (

(Islam et al., 2003; Viscarra Rossel et al., 2006)

(Swain and Davis,1978; Glavao and Vitorello,1998)

)

(σ_g)

Ge et al.,)

(P₆-LISS III

(2006

(Baumgardner et al., 1985)

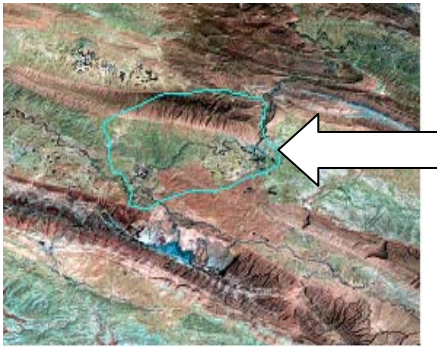
(Hoffer and Johannsen, 1969)

Airborne) -

()

" (Visible Infrared Imaging Spectrometer(AVIRS)

(Mojave desert)



(Alijani, 1995)

(Geravand, 2003)

(Valipour, 2004)

/

Soil studies of Karkheh,)

Soil studies of)

(1995)

(Karkheh, 1995

()

Astragalus Amygdalus(As-A)

(Darvishzadeh, 1992)

(Alluvial - Colluvial fans)

Piedmont alluvial)

(Plateaux)

(River alluvial plains)

(plains)

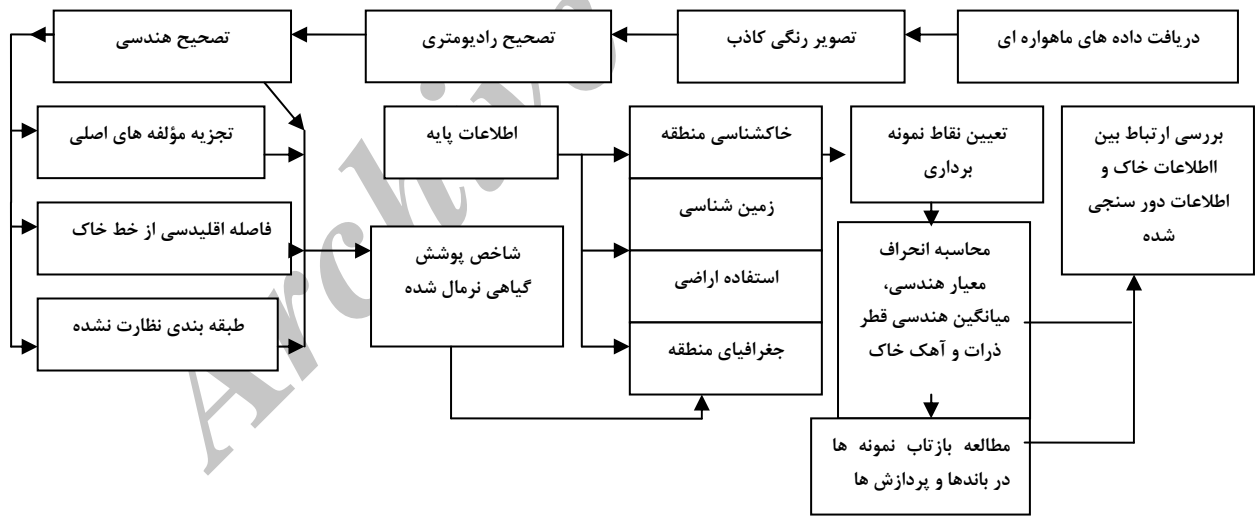
()

()

(Upper terrace)

(Lowlands)

(Lower terrace)



ILWIS 3.3

LISS-III

P6

Coordinate)

(Indian Remote)

(Universal)

(system)

Sensing Satellite(IRS)

Transverse Mercator (UTM)

(

(Haze correction)

(Geometric correction)

(Ground Control Point(GCP))

/

() .(Mather, 1987; Jensen, 1996; Jensen, 2000)

Map to))

((image

.(Image to image))

: ()

Normalized Difference Vegetation)

() (Richards, 1993; Lillesand and Kiefer, 1994)

Principal Component)

(Index (NDVI)

Unsupervised)

(Analysis(PCA)

Soil Line)

(Classification

(Euclidean Distance (SLED)

Richardson)

.(and Wiegand, 1977; Fox et al., 2003

Baret et al., 1993; Fox and) ()

() : (Sabbagh, 2002

$$D = ((nir - A)^2 + (r - B)^2)^{0.5} \quad ()$$

D

r

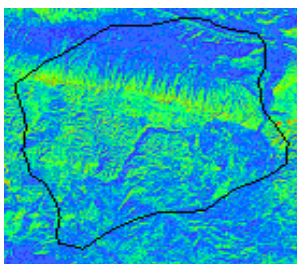
nir

B

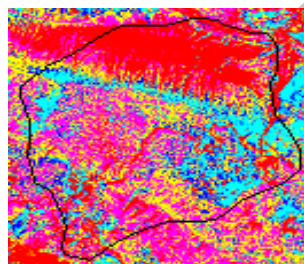
A

(False Color Composite(FCC))

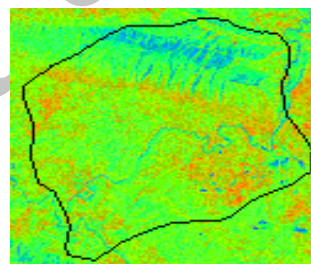
(PCA₁)



د



ج



ب



الف

()
Huette, 1988; Rondeaux) ()

() . (et al., 1996

(FCC)

(OIF)

()

:(Bannari et al., 1995)

$$NDVI = (NIR - R) / (NIR + R) \quad ()$$

NIR

R

: (shade effect)

(spectral rationing)

(Gupta, 1991)

(Filling)

ILWIS

(PCA)

(Aitchison, 1986)

(clustering)

Stratified)

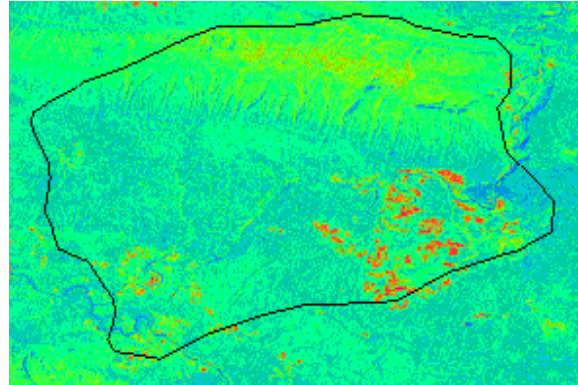
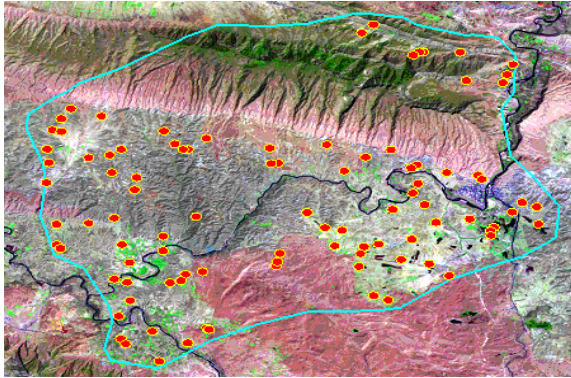
Khajehdin, 2001; Naiej) (Randomized Sampling(SRS)

(Noori, 2002

(Lillesand and Kiefer, 1994)

ILWIS (

()



ب

الف

(NDVI)

(σg)

()

(dg)

$$a = 0.01 \sum_{i=1}^n f_i \ln M_i$$

()

Global)

$$b^2 = 0.01 \sum_{i=1}^n f_i \ln^2 M_i - a^2$$

(Positioning System(GPS)

σg

dg

fi

Mi ()

Mi

σg

(Soil Survey Staff, 1996)

σg ≥

σg <

(Shirazi & Boersma soil texture triangle)

Shirazi and)

(Scatter plot)

SPSS

(Boersma, 1984

(σg)

www.SID.ir

()

()

NIR

(Correlation matrix)

/ / PC1 / /)

(

NIR

(dg)

()

/ / PC1 / /

(dg)

NIR

(SLED)

(PC1)

() $\sigma_g <$

SLED PC₁

	green	red	NIR	SWIR	PCA ₁	SLED
dg	/ **	/ **	/ **	/ **	/ **	/ **
CaCO ₃	/ **	/ **	/ **	/ **	/ **	/ **

() $\sigma_g \geq$

SLED PC₁

	green	red	NIR	SWIR	PCA ₁	SLED
dg	0.468**	-0.377**	0.363**	0.342**	0.416**	-0.058
CaCO ₃	-0.301*	-0.313*	-0.453**	-0.327*	-0.357**	-0.021

()

SLED PC₁

	green	red	NIR	SWIR	PCA ₁	SLED
dg	0.712**	0.688**	0.604**	0.589**	0.642**	-0.082
CaCO ₃	-0.608**	-0.611**	-0.621**	-0.590**	-0.610**	-0.038

(green): باند سبز، red: باند قرمز، NIR: باند مادون قرمز نزدیک، SWIR: باند مادون قرمز میانی، PC₁: لایه اول تجزیه مؤلفه های اصلی، SLED: فاصله اقلیدسی از خط خاک،

CaCO₃: آهک و dg: میانگین هندسی قطر ذرات خاک منطقه می باشد. *: معنی دار در سطح آماری 1٪، **: معنی دار در سطح آماری 5٪)

σ_g

: (σ_g)

(

)

(curve estimation)

σ_g

(Bates and Watts, 1988) SPSS

(

)

()

()

() (Cubic (nonlinear))

σ_g

(trend line)

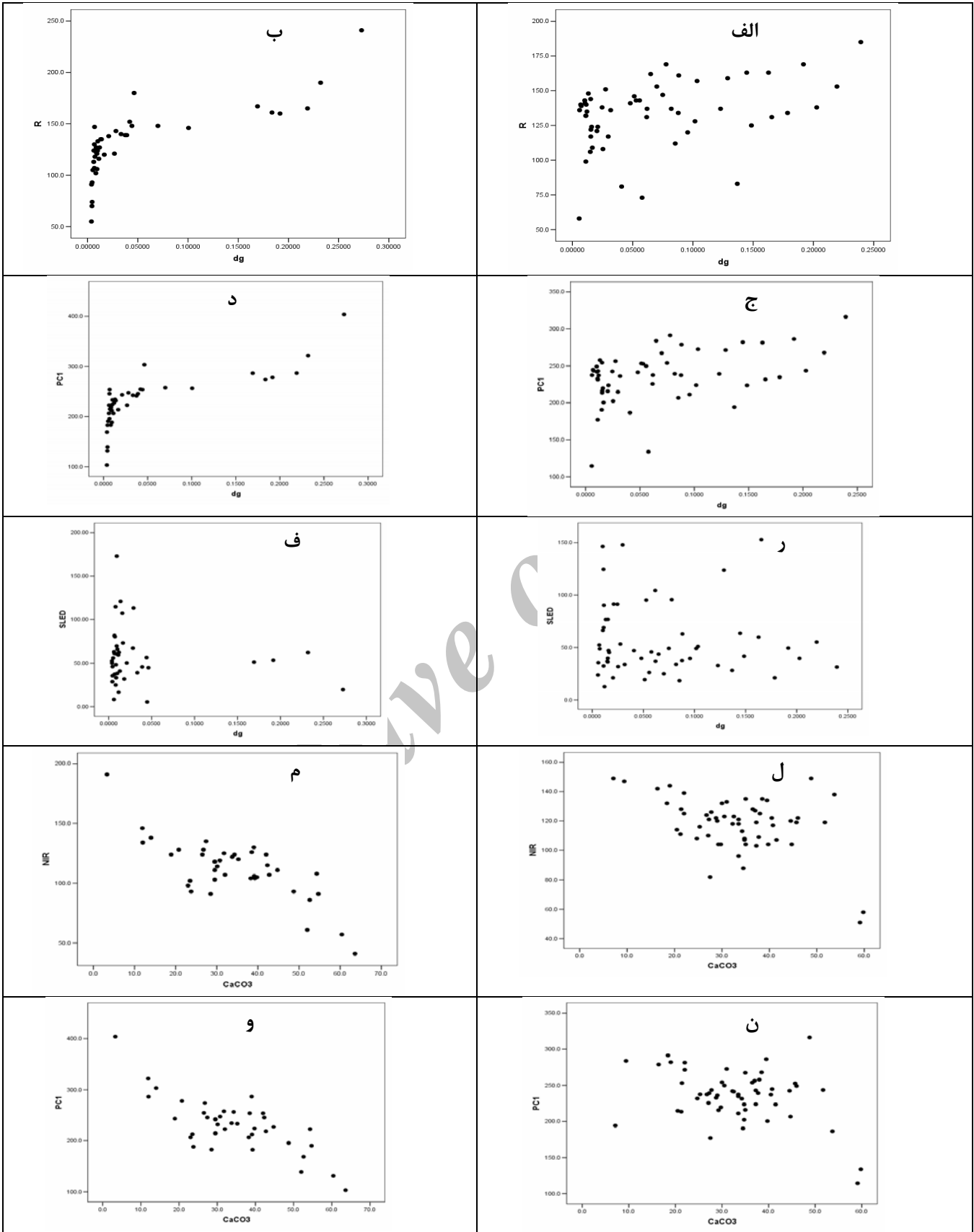
()

(

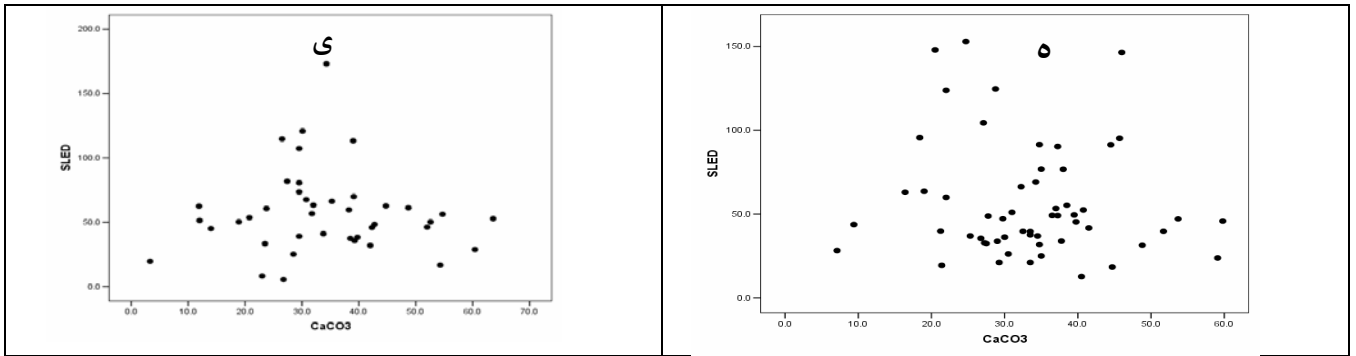
)

()

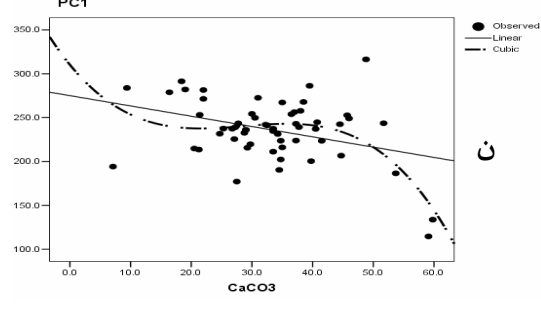
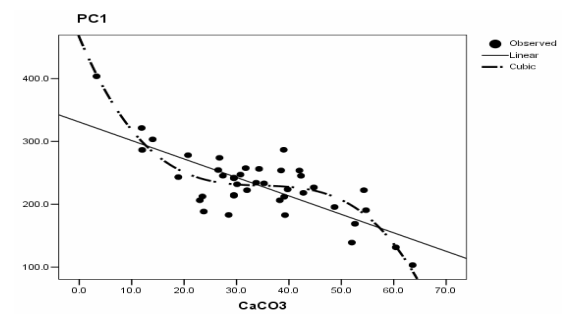
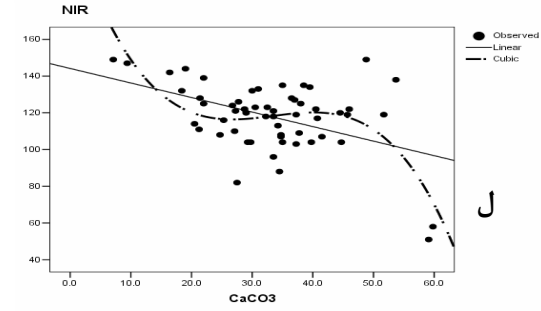
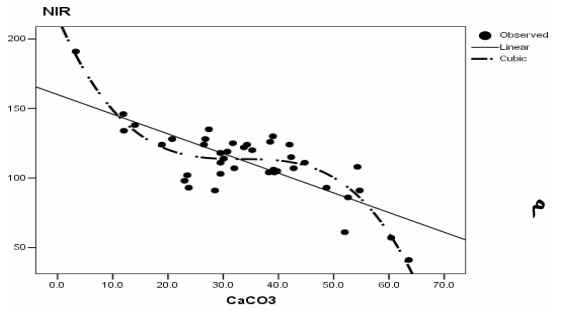
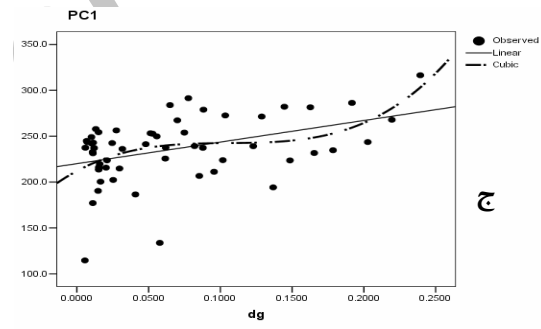
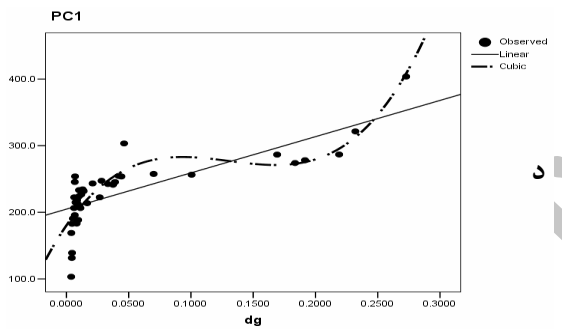
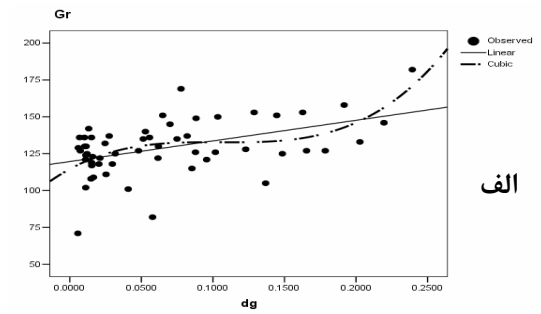
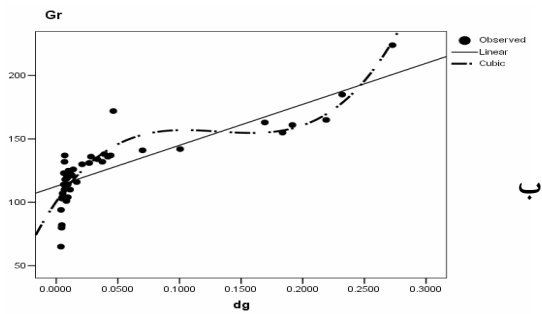
... :
 () . ()



() $\sigma_g <$:
 dg: " " " PCA dg: " " " PCA
 dg: " " " : dg: " " " $\sigma_g \geq$
 : " " " NIR : " " " SLED



ادامه شکل ۵- "ه" - "ی": آهک با لایه SLED.



شکل ۶- انطباق خط تمایل (trend line) با نمودار پراکندگی. ستون سمت چپ: خاک های گروه اول $\sigma_g < 10$ (خاک همگون)، ستون سمت راست: خاک های گروه دوم $\sigma_g \geq 10$ (خاک نا همگون). الف- ب: dg با باند سبز، ج- د: dg با PC_1 ، ل- م: آهک با باند NIR، ن- و: آهک با PC_1 .

جدول ۴- ضرایب تبیین (R^2) روابط میانگین هندسی قطر ذرات و آهک با باندهای اصلی و PC_1 در نمونه های گروه اول $\sigma_g < 10$ (خاک همگون)

	green		red		NIR		SWIR		PCA ₁	
رابطه	درجه سوم	خطی	درجه سوم	خطی	درجه سوم	خطی	درجه سوم	خطی	درجه سوم	خطی
dg	۰/۷۹۳	۰/۶۶۶	۰/۷۵۳	۰/۵۸۱	۰/۶۰۷	۰/۴۲۸	۰/۵۹۴	۰/۴۴۷	۰/۷۳۸	۰/۵۷۶
CaCO ₃	۰/۷۰۷	۰/۵۳۳	۰/۷۲۹	۰/۵۷۰	۰/۷۶۶	۰/۵۷۶	۰/۷۱۰	۰/۵۰۲	۰/۷۴۲	۰/۵۶۹

جدول ۵- ضرایب تبیین (R^2) روابط میانگین هندسی قطر ذرات و آهک با باندهای اصلی و PC_1 در نمونه های گروه دوم $\sigma_g \geq 10$ (خاک ناهمگون)

	green		red		NIR		SWIR		PCA ₁	
رابطه	درجه سوم	خطی	درجه سوم	خطی	درجه سوم	خطی	درجه سوم	خطی	درجه سوم	خطی
dg	۰/۲۶۳	۰/۲۱۹	۰/۱۷۰	۰/۱۴۲	۰/۱۴۸	۰/۱۳۱	۰/۱۲۵	۰/۱۱۷	۰/۲۰۲	۰/۱۷۳
CaCO ₃	۰/۲۱۴	۰/۰۹۱	۰/۲۶۲	۰/۰۹۸	۰/۴۰۶	۰/۲۰۵	۰/۳۵۸	۰/۱۰۷	۰/۲۸۷	۰/۱۲۸

σ_g

(Pearson's two tailed)

$\sigma_g <$

((bivariate) correlation

()

(CaCO₃) (dg)

(σ_g)

$\sigma_g \geq$

(σ_g)

%

σ_g

%

%

(NIR)

σ_g

REFERENCES

- Aitchison, J. (1986). *The Statistical Analysis of Compositional Data*. Chapman and Hall, New York, USA.
- Alavipanah, S. K. (2004). *Application of remote sensing in the earth sciences (soil)*, University of Tehran press, pp. 28-33. (In Farsi)
- Alijani, B. (1995). *Climatology of Iran (geography)*. Payam e noor publication, Tehran, Iran. pp. 95. (In Farsi)
- Bahrami, H. A., Pornalkh, T. and Thmasebipoor, N. (2005). Study of soil erodibility in different land uses from Chamanjir watershed. *Proceedings of the Third National Conference of Erosion & Sediment*, Tehran, pp. 505-510 (In Farsi).
- Bannari, A., Morin, D., Bonn, F. and Huete, A. R. (1995). A review of vegetation indices. *Remote Sensing Reviews*, 13, 95-120.
- Baret, F., Jacquemond, S. and Hanocoq, J. F. (1993). The soil line concept in remote sensing. *Remote Sensing of Environment*, 7, 1-18.
- Bates, D. M. and Watts, D. G. (1988). *Nonlinear regression analysis and its applications*. Wiley, New York, USA.
- Baumgardner, M. F., Silva, L. F., Biehl, L. L. and Stoner, E. R. (1985). Reflectance properties of soil. *Advanced Agronomy*, 38, 1-44.
- Bybordi, M. (2001). *Soil physics*, Tehran university publications. No, 1672, sixth edition. pp. 567-574. (In Farsi)
- Darvishzadeh, A. (1992). *Geology of Iran*. Danesh e emruz publication, Tehran, Iran, p. 901. (In Farsi)
- Demattê, J. A. M., Campos, R. C., Alves, M. C., Fiorio, P. R. and Nanni, M. R. (2004). Visible-NIR reflectance: a new approach on soil evaluation. *Geoderma*, 121, 95-112.
- Folk, R. L. (1966). A review of grain size parameters. *Sedimentology*, 6, 73-93.
- Fox, G. A. and Sabbagh, G. J. (2002). Estimation of soil organic matter from red and near-infrared remotely sensed data using a soil line Euclidean distance technique. *Soil Sci. Soc. Am. J.* 66:1922-1928.
- Fox, G. A., Sabbagh, G. J. and Searcy, S. W. (2003). Radiometric normalization of multi-temporal images using the soil line transformation technique. *Trans. ASAE* 46:851-859.
- Galvão, L. S., Vitorello, I. and Fromaggio, A. R. (1997). Relationships of spectral reflectance and color among surface and subsurface horizons of tropical soil profiles. *Remote Sens. Environ.*, 61, 24-33.
- Ge, Y., Thomasson, J. A. and Sui, R. (2006). Remote sensing of soil properties in precision agriculture: A Review. *An ASABE Meeting Presentation*. Portland Convention Center, Portland, Oregon 9 - 12 July 2006 Paper Number: 061176.
- Geravand, F. (2003). *Role of agriculture in rural extension of Pol-e-Dokhtar*. Thesis of MSc., Geography Dept., Tehran university, Tehran, Iran. (In Farsi)
- Ghorbani, H. and Bahrami, H. A. (2005). Assessment of soil erodibility by weight method in USLE and RUSLE using GIS in northeast Lorestan province. *Proceedings of the Third National Conference of Erosion & Sediment*, Tehran, pp. 658-660 (In Farsi).
- Glavao, L. S. and Vitorello, I. (1998). Variability of laboratory measured soil lines of soil from southeastern Brazil. *Remote Sensing of Environment*, 6, 166-181.
- Gupta, R. D. (1991). *Remote sensing geology*. Springer verlag pub. p. 365.
- Hoffer, R. M. and Johannsen, C. J. (1969). Ecological potentials in spectral signatures analysis. In: Johnson, P.L. (ed.) *Remote Sensing in Ecology Athens (USA): University of Georgia press*.
- Huete, A. R. (1988). A soil adjusted vegetation index (SAVI). *Remote Sensing of Environment*, 25, 295-309.
- ILWIS, (2005). ILWIS software version 3.3 Academic, ITC (RSG/GSD), the Netherlands.
- Islam, K., Singh, B. and McBratney, A. B. (2003). Simultaneous estimation of various soil properties by ultra-violet, visible and near-infrared reflectance spectroscopy. *Australian Journal of Soil Research*, 41, 1101-1114.
- Jensen, J. R. (1996). 2nd ed. *Introductory image processing: A remote sensing perspective*. Prentice Hall, Upper Saddle River, NJ.
- Jensen, J. R. (2000). *Remote sensing of the environment; an earth resources perspective* Upper Saddle River, N. Y.: Prentice - Hall, Inc, pp. 544.
- Khajehdin, S. J. (2001). Data collecting methods for satellite data interpretation. Papers collection of first congress of desertification and its cure, Forest and Pastures Research Institute, pp. 337-338. (In Farsi)
- Lillesand Thomas, M. and Kiefer Plaph, W. (1994). *Remote sensing and image interpretation* John Wiley & Sons, Inc. pp. 87-95.
- Malakouti, M. J. (2006). A Look at the fertility status

- of Iranian soils (evaluation and utilization). Sana Publications, pp. 183-184. (In Farsi)
- Mather, Paul M. (1987). *Computer processing of remotely-sensed images*, England, John Willely & Sons, 1993.
- Means, R. E. and Parcher, J. V. Constable. (1964). *Physical properties of soils*. pp. 464.
- Naiej Noori, R. (2002). *Feasibility study of analysis of saline and chalky lands in Kashan plain using TM data*. A thesis of MSc., natural resources college, Polytechnical University of Isfahan. (In Farsi)
- Nanni, M. R. and Dematte, J. L. M. (2006). Spectral reflectance methodology in comparison with traditional soil analysis. *Soil Science Society of America Journal*, 70, 393-407.
- Okin, G. S. and Painter, T. H. (2003). Effect of grain size on remotely sensed spectral reflectance of sandy desert surfaces. *Remote Sensing of Environment*, 89(2004), 272-280.
- Richards, J. A. (1993). *Remote sensing digital image analysis: an introduction*. 2nd edition, Springer-Verlag, Heilderberg, pp. 340.
- Richardson, A. J. and Wiegand, C. L. (1977). Distinguishing vegetation from soil background information. *Photogram. Eng. Remote Sens.* 43: 1541-1552.
- Rondeaux, G., Steven, M. and Baret, F. (1996). Optimization of soil-adjusted vegetation indices, *Remote Sensing of Environment*, 55: 95-107.
- Shirazi, M. A. and Boersma, L. (1984). A unifying quantitative analysis of soil texture. *Soil Sci. Soc. Am.J.,(SSSAJ)*. 48: 142-147.
- SPSS, (2004). Statistical package for the social sciences version 13.0, SPSS software Inc., (Apache Software Foundation).
- Soil studies of the Karkheh basin (the diagnostic and supplementary studies on Karkheh basin), (1995). The construction Jihad office of Lorestan province, Khoram Abad, Iran. (In Farsi)
- Soil Survey Staff, (1996). *Soil survey laboratory methods manual*. Soil Survey Investigations Report No. 42, version 3.0, USDANRCS National Soil Survey Center, Washington, D.C.
- Stoner, E. R. and Baumgardner, M. F. (1981). Characteristic variations in reflectance of surface soils. *Soil Sci. Soc. Am. J.* 45, 1161-1165.
- Swain, P. H. and Davis, S. M. (1978). *Remote sensing: the quantitative approach*, Mc Graw Hill, New York.
- Valipour, P. (2004). *Geomorphology of Malavi-Pol e Dokhtar district intending civil planning*. A thesis of geography MSc., Geography Dept., Geoscience college, Shahid Beheshti University(SBU), Tehran, Iran. (In Farsi)
- Viscarra Rossel, R. A., Walwoort, D. J. J., Mc Bratney, A. B., Janik, L. K. and Skjemstad, J. O. (2006 b). Visible, near infrared, mid-infrared or combined diffuse reflectance spectroscopy for simultaneous assessment of various soil properties. *Geoderma*, 131, 59-75.