

*

(// : // :)

Archive of SID

Eslami and,

.(Steppuhn, 1981) .

(1994) Firoozbakht

(Potter and, Colman,

.2003)

(Kustas et

.al, 1994)

(1999) Ghaiur et al. .

Dini et al.

(2005)

, ()

(2006) Sharifi et al. .

(2011) Mizukami et al. .

(2009) Fathzadeh et al..

(1981) Martinec and Rango

(1991) Elder et al.

Rango and .

(1995) Martinec

Kazama et al. (2003) Mote et al.

(2005) Dressler .

(2008)

()
()

(%) (m) (m) (m) (km) (km²)

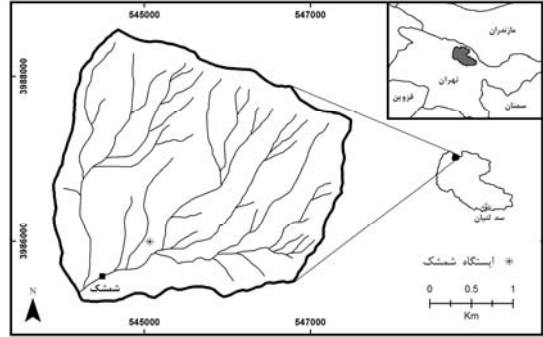
/ /

(2007) Ghanbarpour et al. .

$$a = 1.04 \frac{\rho_s}{\rho_w} - 0.07 \quad (\quad) \quad ()$$

$$a = 1.96 \frac{\rho_s}{\rho_w} - 0.239 \quad (\quad) \quad ()$$

$$\rho_w \quad \rho_s \quad a \quad ()$$



() ()

() ()

$$(\quad) \quad ()$$

$$M = aT_d \quad ()$$

a : M :

T_d

T_d

$$T_d = T_a - T_b \quad ()$$

T_a :

() T_b :

$$T_d \quad T_a < T_b$$

l ()

l ()

\pm

(National Engineering Handbook (NEH), 2004)

(// //)

(1980) Kuusisto

()

(Rosenthal and Dozier, 1996)

(Painter et al., 2003)

$$M = a \sum T = H_w + P_s$$

$$H_w = a \sum T - P_s$$

()

Grid

Envi

()

ArcGIS

M

H_w

P_s ()

a

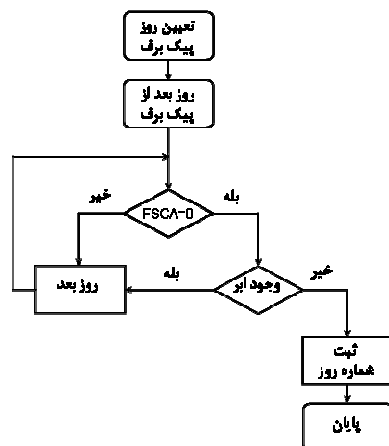
∑T

()

Archive of SID

()

()



()

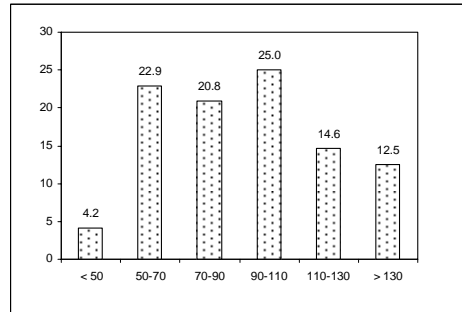
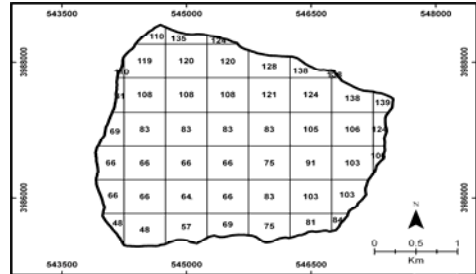
()

(Stevenson, 2006)

$$MAPE = \frac{\sum(|E - A| / A) \times 100}{n} \quad ()$$

E : $MAPE$
 n : A

()

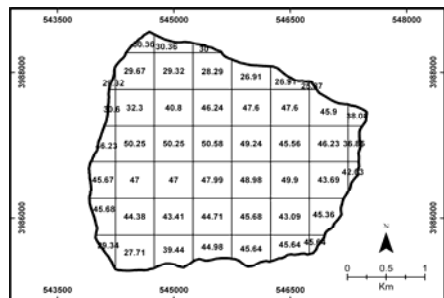


(cm)	(cm)	Y (UTM)	X (UTM)
/	/		
/	/		
/	/		
/	/		
/	/		
/	/		
/	/		
/	/		
/	/		
/	/		

a	ρ_w	ρ_s
/	/	/
/	/	/
/	/	/

()

()



(1981) Martinec et al.

()

()

()

()

(1998) Cline et al.

)

(

REFERENCES

- Cline D. W., Bales R. C., and Dozier J., (1998). Estimating the Spatial Distribution of Snow in Mountain Basins Using Remote Sensing and Energy Balance Modeling. *Water Resources Research*, 34 (5), 1275-1285.
- Dini, Gh., Ziaeeian Firoozabadi, P., and Farajzadeh Asl, M., (2005). Study of SCA changes in central Alborz mountains using MODIS and AVHRR, In: Proceeding of geomatics symposium, N.C.C of Iran, (In Farsi).
- Dressler K. A., (2005). *Estimating the Spatial Distribution of Snow Water equivalent and Snowmelt Runoff Modelling in Headwater Basins of the Semi-Arid Southwest*, Ph.D Dissertation, University of Arizona.
- Elder K., Dozier J., and Michaelsen J., (1991). Snow Accumulation and Distribution in an Alpine Watershed. *Water Resources Research*, 27 (7), 1541-1552.
- Eslami, M., and Firoozbakht, A. (1994) Spatial distribution of snowfall in Karoon and Dez basins. In: Proceeding of *The first symposium on snow and ice hydrology, euromia*, Iran, (In Farsi).
- Fathzadeh, Ali, M., Mahdavi, R. Bales, A. A. Abkar, H. and, Askari Sh., (2009). A comparison of degree-day and radiation base of Snowmelt Runoff Model (SRM), *journal of natural resources, (range and watershed management issue)* 62 (1), (In Farsi).
- Ghaiur, Hassanali, and Rahimi, D. (1999). Snow analysis in respect to hydrometeorology and its effects on river discharge for Sarab e babaheidar, In Proceeding of: *second local conference on climate change*, Iran meteorology organization, (In Farsi).
- Ghanbarpour M. R., Saghafian B., Saravi M. M., and, Abbaspour K. C. (2007). Evaluation of Spatial and Temporal Variability of Snow Cover in a Large Mountainous Basin in Iran, *Nordic Hydrology*, 38(1), 45-58.
- Kazama S., Izumi H., Sarukkalige P. R., Nasu T., and, Sawamoto M. (2008). Estimating Snow Distribution over a Large Area and Its Application for Water Resources, *Hydrological Processes*, 22, 2315-2324.
- Kustas W. P., Rango A., and, Uijlenhoet J. (1994). A Simple Energy Budget Algorithm for the Snowmelt Runoff Model, *Water Resources Research*, 30 (5), 1515-1527.
- Kuusisto E. (1980). On the Values and Variability of Degree-Day Melting Factor in Finland. *Nordic Hydrology*, 11, 235-242.
- Martinec J., and, Rango A. (1981). Areal Distribution of Snow Water Equivalent Evaluated by Snow Cover Monitoring. *Water Resources Research*, 17(5), 1480-1488.
- M. Naoki, S. Perica, and, Hatch., D. (2011). Regional approach for mapping climatological snow water equivalent over the mountainous regions of the western United States, *Journal of Hydrology*, In Press, Accepted Manuscript, Available online 26 January 2011.
- Mote T. L., Grundstein A. J., Leathe D. J., and, Robinson D. R. (2003). A Comparison of Modeled, Remotely Sensed, and Measured Snow Water Equivalent in the Northern Great Plains, *Water Resources Research*, 39 (8), 1-12.
- Natural Resources Conservation Service, (2004). *National engineering handbook (NEH)*, U.S. Department of Agriculture (USDA) Pub.
- Painter T. H., Dozier J., Roberts D. A., Davis R. E., and, Green R. O. (2003). Retrieval of Subpixel Snow Covered Area and Grain Size from Imaging Spectrometer Data. *Remote Sensing of*

- ... :
- Environment*, 85, 64-77.
- Potter T. D., and, Colman B. R. (2003). Handbook of Weather, Climate and Water: Dynamics, Climate, Physical Meteorology, Weather Systems, and Measurements, Wiley-Interscience, 1974 pages.
- Rango A., and, Martinec, J. (1995). Revisiting the Degree-Day Method for Snowmelt Computations, *Water Resources Bulletin*, 31 (4), 657- 669.
- Rosenthal W., and, Dozier J. (1996). Automated Mapping of Montane Snow Cover at Subpixel Resolution from the Landsat Thematic Mapper, *Water Resources Research*, 32, (1), 115-130.
- Sharifi, M.R., A. Akhundali, and, J. Porhemmat, (2006), Snow water equivalent variations with elevation in microscales catchments (case study: Samsami catchment of Karoon basin). In: *proceeding of 7th international seminar of river engineering*, Chamran University, Ahwaz, Iran, (In Farsi).
- Steppuhn H. (1981). Snow and Agriculture, In Handbook of Snow: Principles, Processes, Management and Use, The Blackburn Press, 776 pages.
- Stevenson W. J. (2006). *Operations Management*, 9th edition, Mc Graw-hill, 903 pages.

Archive of SID